

FINAL PLAT OF the PORTAL, pine creek canyon, UNIT IV (LOTS 74 THRU 165, TRACTS I, K, AND L)

A SUBDIVISION OF A PORTION OF THE W 1/2 OF SECTION 25, AND THE E 1/2 OF SECTION 26, TOWNSHIP 12 NORTH, RANGE 8 EAST, GILA AND SALT RIVER MERIDIAN, GILA COUNTY, ARIZONA

FD. BLM. B.C. N 1/4 SEC 25 (1971)

#177 CALC PT #107 FD ALUM CAP 2.55' SW

SET 1/2" REBAR BDRY FD 1/2" REBAR 6.75' SE C.O.E.-N 1/4

TONTO NATIONAL FOREST

WILLIAMSON WATER WORKS (DOC 94656, PAGE 573) NOT PART OF THIS SUBDIVISION 596.46'

TRACT "L" COMMERCIAL (FUTURE DEVELOPMENT)

TRACT "C"

PORTAL PINE CREEK CANYON UNIT IV (LOTS 1 THRU 73, TRACTS A THRU J) (FOR MAP 650)

TRACT "C" NATURE AND CULTURAL PRESERVE

TRACT "D" RESORT - TR (FUTURE)

TRACT "G" WELLSITE

TRACT "D" (FUTURE)

○ CURVE DATA

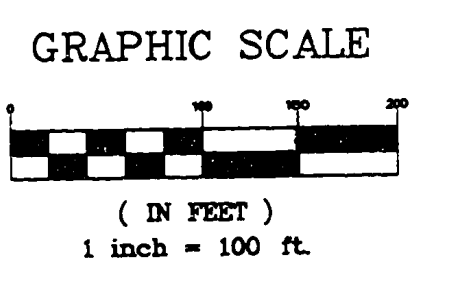
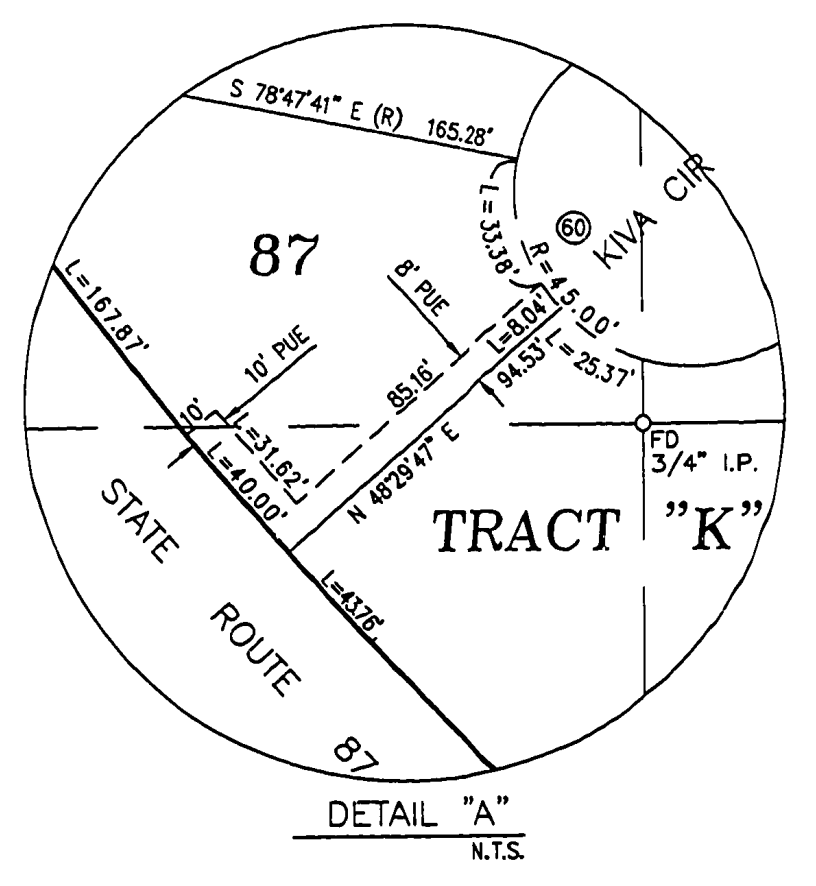
CURVE	RADIUS	LENGTH	TANGENT	DELTA
1	125.00	173.89	104.34	79°21'13"
2	250.00	237.01	128.25	54°19'05"
3	150.00	161.71	89.72	61°46'11"
4	150.00	135.59	72.82	51°47'33"
5	600.00	708.89	402.38	67°41'40"
6	100.00	62.11	32.29	35°35'02"
7	100.00	42.13	20.34	22°29'57"
8	100.00	43.75	22.23	25°04'10"
9	100.00	106.26	58.78	60°53'36"
10	100.00	40.24	20.39	23°33'27"
11	100.00	61.66	31.85	35°19'42"
12	250.00	25.66	12.85	09°53'10"
13	25.00	49.95	38.85	114°28'57"
14	45.00	179.83	98.67	228°57'54"
15	25.00	49.95	38.85	114°28'57"
28	45.00	71.86	46.19	91°29'38"
29	25.00	18.24	9.35	41°47'51"
30	25.00	35.01	21.57	80°14'50"
31	270.00	19.65	14.87	08°18'18"
32	25.00	39.27	25.00	90°00'00"
33	25.00	19.38	10.21	44°24'55"
34	45.00	211.14	45.93	268°49'50"
35	25.00	19.38	10.21	44°24'55"
36	25.00	39.27	25.00	90°00'00"
37	170.00	18.89	9.45	06°21'54"
38	25.00	32.79	18.23	75°38'54"
39	25.00	19.38	10.21	44°24'55"
40	45.00	211.14	45.93	268°49'50"
41	25.00	19.38	10.21	44°24'55"
42	25.00	32.79	18.23	75°38'54"
43	25.00	19.38	10.21	44°24'55"
44	25.00	24.34	13.23	55°46'50"
45	45.00	210.49	46.80	268°00'10"
46	25.00	17.50	8.72	40°05'59"
47	25.00	32.79	18.23	75°38'54"
48	25.00	39.27	25.00	90°00'00"
49	25.00	19.38	10.21	44°24'55"
50	45.00	211.14	45.93	268°49'50"
51	25.00	19.38	10.21	44°24'55"
52	25.00	39.27	25.00	90°00'00"
53	25.00	39.27	25.00	90°00'00"
54	25.00	19.38	10.21	44°24'55"
55	45.00	211.14	45.93	268°49'50"
56	25.00	19.38	10.21	44°24'55"
57	25.00	39.27	25.00	90°00'00"
58	25.00	37.33	23.13	85°33'14"
59	25.00	19.38	10.21	44°24'55"
60	45.00	211.14	45.93	268°49'50"
61	25.00	19.38	10.21	44°24'55"
62	25.00	37.33	23.13	85°33'14"
63	25.00	19.38	10.21	44°24'55"
64	25.00	19.38	10.21	44°24'55"
65	45.00	211.14	45.93	268°49'50"
66	25.00	19.38	10.21	44°24'55"
67	25.00	37.33	23.13	85°33'14"
68	25.00	19.38	10.21	44°24'55"
69	25.00	19.38	10.21	44°24'55"
70	45.00	211.14	45.93	268°49'50"
71	25.00	19.38	10.21	44°24'55"
72	25.00	39.27	25.00	90°00'00"
73	25.00	19.38	10.21	44°24'55"
74	25.00	14.88	7.67	34°07'40"
75	45.00	208.88	47.25	267°17'07"
76	25.00	23.16	12.48	53°04'26"
77	25.00	39.27	25.00	90°00'00"
78	25.00	39.27	25.00	90°00'00"
79	25.00	19.38	10.21	44°24'55"
80	45.00	211.14	45.93	268°49'50"
81	25.00	19.38	10.21	44°24'55"
82	25.00	39.27	25.00	90°00'00"
83	25.00	19.38	10.21	44°24'55"
84	25.00	19.38	10.21	44°24'55"
85	45.00	211.14	45.93	268°49'50"
86	25.00	19.38	10.21	44°24'55"
87	25.00	19.38	10.21	44°24'55"
88	25.00	42.41	28.35	97°11'16"
89	25.00	19.38	10.21	44°24'55"
90	45.00	211.14	45.93	268°49'50"
91	25.00	19.38	10.21	44°24'55"
92	25.00	40.65	26.42	83°09'22"
93	25.00	41.53	27.36	85°10'08"
94	45.00	211.14	45.93	268°49'50"
95	45.00	211.14	45.93	268°49'50"
96	25.00	19.38	10.21	44°24'55"
97	25.00	41.54	27.38	85°12'09"

LINE DATA

LINE	DIRECTION	DISTANCE
L1	S 54°24'58" W	74.01'
L2	N 24°38'15" E	82.78'
L3	N 50°22'25" E	41.77'
L4	N 00°05'53" E	51.74'
L5	S 21°07'27" E	91.87'
L6	S 44°02'59" E	68.89'
L7	N 40°57'16" W	36.56'
L8	S 00°25'53" W	6.74'
L9	N 00°05'53" E	6.74'
L10	N 00°25'52" W	8.41'
L11	N 00°20'15" W	18.00'
L12	N 88°08'16" W	11.00'
L13	N 00°20'15" W	33.29'
L14	N 37°03'55" E	30.77'
L15	N 08°28'20" W	56.50'
L16	N 01°34'16" E	59.57'

LEGEND

- (R) RADIAL BEARING
- A.O.D.T. RIGHT OF WAY MARKER
- FOUND MONUMENT (AS NOTED)
- CURVE NUMBER (SEE CURVE DATA TABLE)
- LS LINE NUMBER (SEE LINE DATA TABLE)
- EASEMENT LINE



NO.	REVISIONS	DATE	BY	CHK.

SIERRA
Engineering

431 S. BEELINE HIGHWAY, SUITE A • PAYSON, ARIZONA 85541 • (602)474-4636

the PORTAL, pine creek canyon, UNIT IV

PINE, ARIZONA

JOB NO.	9363
DESIGNED BY:	GAD
DRAWN BY:	KRS
CHECKED BY:	GAD
APPROVED BY:	
DATE:	12-1-95

FINAL PLAT
LOTS 74 THRU 165, TRACTS I, K AND L

SCALE:	1" = 100'
DRAWING NO.	FP02
SHEET NO.	2
OF	2