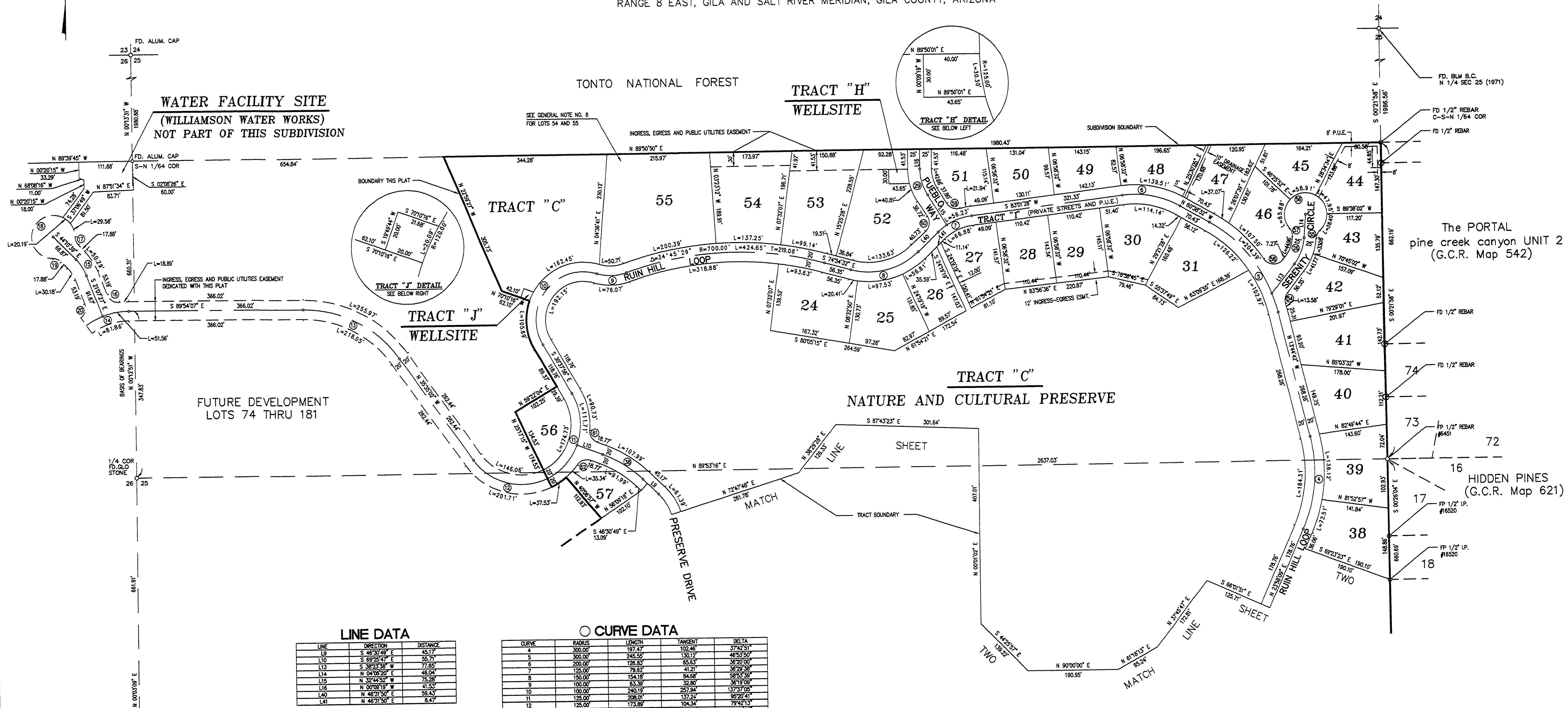
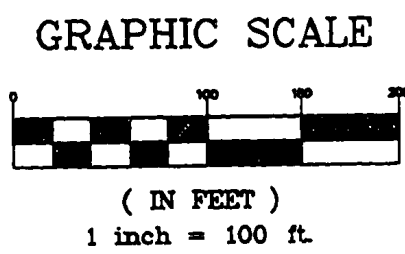


FINAL PLAT OF the PORTAL, pine creek canyon, UNIT IV (LOTS 1 THRU 73, TRACTS A THRU J)

A SUBDIVISION OF A PORTION OF THE W 1/2 OF SECTION 25, TOWNSHIP 12 NORTH,
RANGE 8 EAST, GILA AND SALT RIVER MERIDIAN, GILA COUNTY, ARIZONA



LINE DATA

LINE	DIRECTION	DISTANCE
L1	S 46°30'49" E	45.17
L10	S 69°25'47" E	55.71
L13	S 38°23'38" W	77.85
L14	N 04°19'20" E	48.04
L15	N 32°44'52" W	75.28
L16	N 00°09'19" W	41.53
L40	N 46°31'50" E	58.43
L41	N 46°31'50" E	8.47

CURVE DATA

CURVE	RADIUS	LENGTH	TANGENT	DELTA
4	300.00	197.47	102.46	37°42'51"
5	300.00	245.55	130.17	46°53'50"
6	200.00	126.85	65.83	36°20'00"
7	125.00	79.82	41.21	36°29'38"
8	150.00	154.18	84.68	58°53'39"
9	100.00	63.39	32.80	36°19'09"
10	100.00	240.19	257.94	173°17'06"
11	125.00	208.01	137.24	95°20'41"
12	125.00	173.88	104.34	79°42'13"
13	250.00	237.01	128.26	54°19'05"
14	150.00	84.46	48.85	35°04'46"
15	100.00	40.24	20.39	23°03'12"
16	25.00	32.79	19.23	75°08'34"
17	25.00	19.38	10.21	44°24'55"
18	45.00	211.14	45.83	268°49'50"
19	25.00	19.38	10.21	44°24'55"
20	25.00	32.79	19.23	75°08'34"
26	100.00	59.84	30.85	34°17'19"
29	100.00	54.85	29.23	32°26'53"
38	250.00	96.85	50.67	22°54'57"
54	25.00	23.81	12.90	54°34'11"
55	25.00	19.38	10.21	44°24'55"
56	45.00	211.14	45.83	268°49'50"
57	25.00	19.38	10.21	44°24'55"
58	25.00	46.67	33.69	106°50'57"
59	25.00	31.81	18.46	72°55'24"
60	25.00	34.59	20.71	78°14'42"
61	25.00	32.57	19.08	74°39'02"
62	25.00	32.57	19.08	74°39'02"

NO.	REVISIONS	DATE	BY	CHK.



the PORTAL, pine creek canyon, UNIT IV
PINE, ARIZONA

JOB NO. 9363
 DESIGNED BY: GAD
 DRAWN BY: MWB
 CHECKED BY: GAD
 APPROVED BY:
 DATE: 9/08/94

FINAL PLAT

SCALE:
HORIZ: 1"=100'

SHEET NO.	OF
3	3

