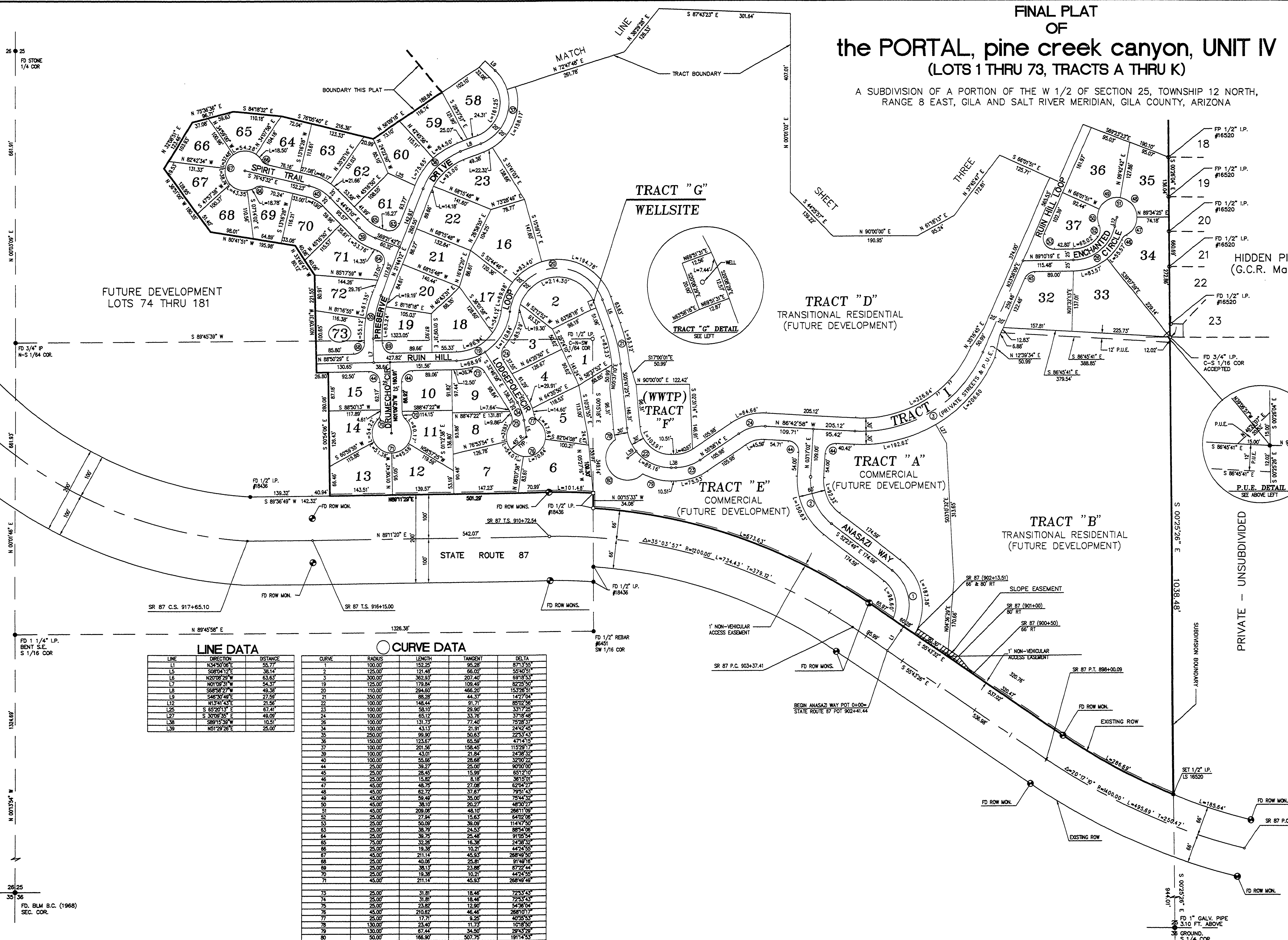
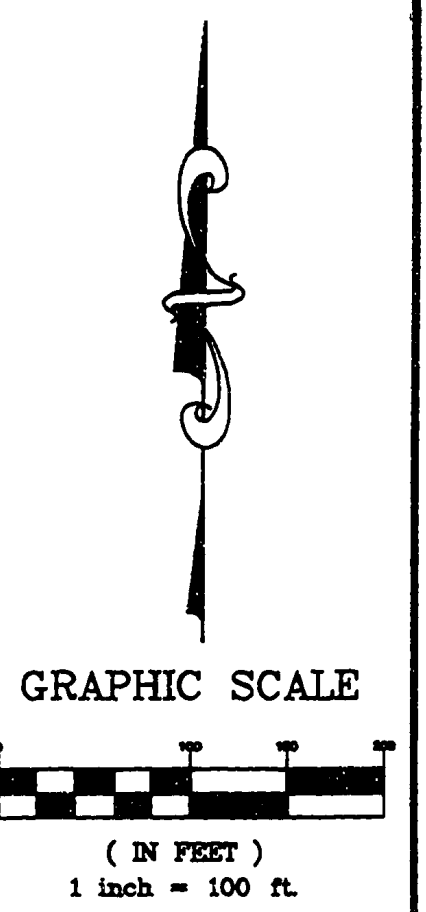


FINAL PLAT OF the PORTAL, pine creek canyon, UNIT IV (LOTS 1 THRU 73, TRACTS A THRU K)

A SUBDIVISION OF A PORTION OF THE W 1/2 OF SECTION 25, TOWNSHIP 12 NORTH, RANGE 8 EAST, GILA AND SALT RIVER MERIDIAN, GILA COUNTY, ARIZONA



FUTURE DEVELOPMENT LOTS 74 THRU 181

TRACT "G" WELLSITE

TRACT "D" TRANSITIONAL RESIDENTIAL (FUTURE DEVELOPMENT)

TRACT "F" (WWTP)

TRACT "E" COMMERCIAL (FUTURE DEVELOPMENT)

TRACT "A" COMMERCIAL (FUTURE DEVELOPMENT)

TRACT "B" TRANSITIONAL RESIDENTIAL (FUTURE DEVELOPMENT)

HIDDEN PINES (G.C.R. Map 621)

PRIVATE - UNSUBDIVIDED

LINE DATA

LINE	DIRECTION	DISTANCE
L1	N34°50'06"E	55.77
L5	S08°04'12"E	38.14
L6	N20°08'29"W	63.63
L7	N01°09'51"W	54.37
L8	S88°58'27"W	49.38
L9	S46°30'49"E	27.59
L12	N13°41'43"E	21.56
L26	S 65°20'13" E	67.41
L27	S 30°06'35" E	66.09
L38	S89°15'39" W	10.51
L39	N51°29'28"E	26.07

CURVE DATA

CURVE	RADIUS	LENGTH	TANGENT	DELTA
1	100.00	152.25	95.28	87°13'55"
2	125.00	121.48	66.02	55°40'51"
3	300.00	362.93	207.40	69°18'53"
19	125.00	179.84	109.49	82°25'43"
20	110.00	284.60	466.20	153°29'51"
21	350.00	88.28	44.37	14°27'04"
22	100.00	148.44	91.71	85°02'56"
23	100.00	58.10	29.30	33°17'25"
24	100.00	65.12	33.76	37°18'48"
26	100.00	131.73	77.40	75°28'57"
34	100.00	43.13	21.91	24°42'45"
35	250.00	99.90	50.83	22°53'43"
36	150.00	123.67	65.59	47°14'15"
37	100.00	201.56	158.45	115°29'17"
39	100.00	43.01	21.84	24°38'32"
40	100.00	55.66	28.66	32°00'22"
44	25.00	39.27	25.00	90°00'00"
45	25.00	28.45	15.99	65°12'10"
46	25.00	15.82	8.18	36°15'01"
47	45.00	48.75	27.08	62°04'27"
48	45.00	62.72	37.87	79°51'43"
49	45.00	59.49	35.00	75°44'32"
50	45.00	38.10	20.27	48°30'27"
51	45.00	298.06	48.10	288°11'09"
52	25.00	27.94	15.63	64°02'08"
53	25.00	50.09	39.09	114°47'50"
63	25.00	36.79	24.53	88°54'06"
64	25.00	39.79	26.44	91°25'54"
65	75.00	32.26	16.38	24°36'32"
66	25.00	19.38	10.21	44°24'55"
67	45.00	211.14	45.93	268°49'50"
68	45.00	40.08	26.81	91°46'18"
69	25.00	36.13	23.88	87°22'44"
70	25.00	19.38	10.21	44°24'55"
71	45.00	211.14	45.93	268°49'49"
73	25.00	31.81	18.48	72°53'43"
74	25.00	31.81	18.48	72°53'43"
75	25.00	25.82	12.90	42°36'04"
76	45.00	210.67	46.44	288°01'17"
77	25.00	17.71	9.20	40°35'53"
78	130.00	23.40	11.73	10°18'50"
79	130.00	67.44	34.50	29°43'29"
80	50.00	168.90	507.75	191°14'53"

NO.	REVISIONS	DATE	BY	CHK.



the PORTAL, pine creek canyon, UNIT IV PINE, ARIZONA

JOB NO. 9363
 DESIGNED BY: GAD
 DRAWN BY: MWB
 CHECKED BY: GAD
 APPROVED BY:
 DATE: 9/08/94

FINAL PLAT

SCALE: HORIZ: 1"=100'

SHEET NO. 2	OF 3
-------------	------