





WHEN ORDERING THIS BOOK IT WILL ONLY BE NECESSARY TO GIVE THE NUMBER

No. 2200

P. F. PETTIBONE & CO.  
STATIONERS, PRINTERS,  
BLANK BOOK MAKERS



& LITHOGRAPHERS.  
TWO STORES, 178 MONROE STREET  
GENERAL OFFICES & FACTORY, 44-50 S. DESPLAINES ST.  
CHICAGO.

3x7 6-13-07

*pld  
1.65*

*Make for Campbell Street only*

*copy of Guide*

*J. Miller  
Aug 15 1911*



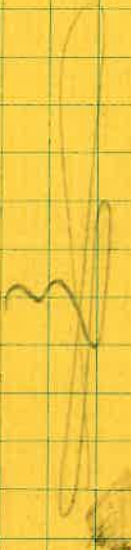
THE UNIVERSAL



FIGURING BOOK



0400 in construction of trap and  
 Diverging of Gable - by point in  
 center of broad sheet, where extended South boundary  
 of lot 33 in Block 73 in Gable Terrace  
 intersects with center line of Broad Street



Under of this block



Meander line from 0+00 to North. - to Establish N.W. City limit corner. Book 11 - 26 -

point	Course	Dist	+ N	- S	Total N	+ E	- W	Total E	Remarks
0+00	00	00	00	00	00	00	00	00	Book 11 - page 8
Mon. N <sup>o</sup> 4	N 21° 42' W	79.20	73.59 ✓		73.59 ✓	29.28 ✓		29.28 ✓	B. 11 - page 8
Mon N <sup>o</sup> 3 A	N 39° 07' W	258.2	200.33 ✓		273.92 ✓	162.90 ✓		192.18 ✓	B. 11 - page 7 & 9
Mon N <sup>o</sup> 3	N 39° 07' W	299.6	232.45 ✓		506.37 ✓	189.02 ✓		381.20 ✓	B. 11 - p. 7 & 9
Mon. N <sup>o</sup> 2	N 39° 07' W	342.1	265.42 ✓		771.79 ✓	215.83 ✓		597.03 ✓	B. 11 - p. 7 & 10
Mon. N <sup>o</sup> 1 B	N 81° 07' W	362.6	55.99 ✓		827.78 ✓	358.25 ✓		955.28 ✓	B. 11 - p. 9 & 10
Mon N <sup>o</sup> 1 A	N 25° 29' W	623.90	563.20 ✓		1390.98 ✓	268.43 ✓		1323.71 ✓	B. 11 - p. 11
Fire Hydrant	N 80° 13' W	444.2	70.22 ✓		1461.20 ✓	436.58 ✓		1660.29 ✓	B. 11 - p. 16
Stake, 1 1/2" dia	S 84° 20' 30" W	470.60		46.89 ✓	1414.31 ✓	473.28 ✓		2133.57 ✓	B. 11 - p. 17
Fire Hydrant	S 81° 24' W	348.80		52.07 ✓	1362.24 ✓	344.29 ✓		2477.86 ✓	B. 11 - p. 17
2x2 stake	N 83° 12' W	298.30	34.73 ✓		1396.97 ✓	291.24 ✓		1769.10 ✓	B. 11 - p. 18
Spike	N 85° 32' W	343.00	26.71 ✓		1423.68 ✓	341.98 ✓		3111.08 ✓	B. 11 - p. 18
					1337.97 ✓			3430.55 ✓	
					S. 85.71			W 374.47	N.W. corner.

This book N. 11. orig. is numbered 885-10.

O.K. M.

N. 21° 42' W - 79.20

N. 39° 07' W - 258.2

N. 39.07 - 299.6



N. 21° 42' W - 79.20  
 9.9680777 9.5679044  
 1.8987252 1.8987252  
 1.8668029 1.4666296  
 73.59 29.28

N. 39° 07' W - 258.2  
 9.8897850 9.7999616  
 2.4119542 2.4119562  
 2.3017412 2.2119178  
 200.33 162.90

N. 39.07 - 279.6  
 9.8897850 9.7999616  
 2.4765418 2.4765418  
 2.3663268 2.2765034  
 232.45 189.02

N. 39° 07' W - 342.1  
 9.8897850 - 9.7999616  
 2.5341531 2.5341531  
 2.4239381 2.3341147  
 265.42 215.83

N. 81° 07' W 362.6  
 9.1887120 9.9947591  
 2.5594278 2.5594278  
 1.7481398 2.5541869  
 55.99 358.25

N. 25° 29' W - 623.90  
 9.9555485 9.6337194  
 2.7251150 2.7951150  
 2.7506635 2.4288344  
 563.20 268.43

N 80° 51' 30" W 444.2  
 9.2010586 9.9944480  
 2.6456187 2.6456187  
 1.8466773 2.6400672  
 70.26 436.58

S. 84° 40' 30" - 475.60  
 8.9938597 9.9978787  
 2.6772418 2.6772418  
 1.6711015 2.6751205  
 46.89 473.28

S. 81° 24' W - 348.80  
 9.1747439 9.9950893  
 2.5418288 2.5418288  
 1.7165727 2.5369181  
 52.07 344.29

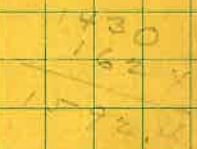
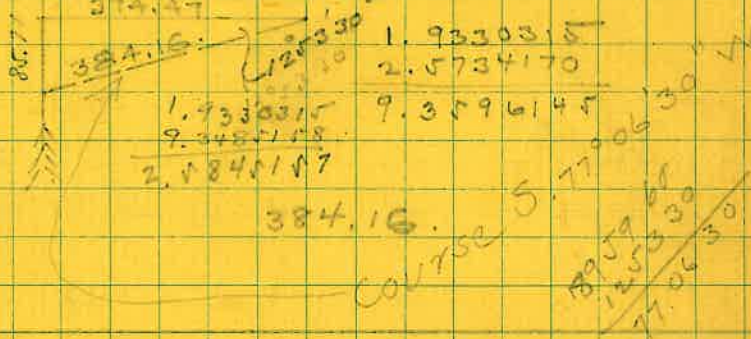
N. 83° 12' W 293.30  
 9.0733663 9.9969242  
 2.4673121 2.4673121  
 1.5406784 2.4642463  
 34.73 291.24

N. 85° 32' W - 343.00  
 8.8914269 9.9986790  
 2.5352941 2.5352941  
 1.4267150 2.5339931  
 26.71 341.98

S. 81° 24' W - 348.80  
 9.1747439 9.9950893  
 2.5418288 2.5418288  
 1.7165727 2.5369181  
 52.07 344.29  
 384.16  
 1.9330315  
 2.5734170  
 9.3596145  
 2.5845157

0400  
 1/2 W by N 24° 00' W 2640.00 + 2411.76  
 1/2 W by S. 66° W 2640.00  
 N. W  
 1073.79 2411.76  
 1337.97 3485.55  
 3.1264237 3.5422055  
 3.1264529  
 3.5422713  
 9.5841816 = 21°

9.9607302 9.6093133  
 3.4216039 3.4216039  
 3.3823341 3.0309172  
 3233  
 2411.76 1073.79  
 9.6093133 9.9607302  
 3.4216039 3.4216039  
 3.0309172 3.3823341  
 1073.79 2411.76  
 21° - 90° = 1337.97 : X  
 3.1264529  
 9.5543292  
 3.5721237 6733.57



50



check this page. Location of Points. North Side.

Points	Course	Dist	+N	-S	Total N	+E	-W	Total +E	Remarks
Mon. N <sup>o</sup> 4.					73.59			- 29.28	page 1.
SE corner <sup>2</sup>									
Minor Vaion Hall	S. 26° 46' W								B. 11 - page 8.
- Lot 5. 3 E & 3 N 31.88. -									
Mon N <sup>o</sup> 3 A					273.92			- 192.18	page 5.
NE cor. 2 St. Br.	S. 16° 49' E	64.00		61.26	212.66	1852		- 210.70	Book 8 - p. 9
Inner corner	S. 3° 06' E	69.93		69.83	204.09	378		- 195.96	" 8 - . 9
SW cor Br. and Kane	S. 15° 48' W	39.83		38.32	235.60		1084	- 181.34	" 8 - . 9
NW cor Br. and Kane	S. 60° 45' W	44.80		21.88	252.04		3909	- 153.09	" 8 - . 9
Mon N <sup>o</sup> 3					506.37			- 381.20	page 1.
SW cor Br. & Euclid	S. 34° 48' W	31.18		25.60	480.77		1780	- 363.40	B. 8 - p. 10
NW " " & "	S. 63° 13' W	29.70		1338	466.99		2651	- 354.69	B. 8 - page 10
Mon N <sup>o</sup> 2					771.79			- 597.03	page 5
NE cor. Lot 7, Bl. 90	S. 28° 01' E	84.00		74.16	697.63	3946		- 557.57	Book 8 - p. 10
N. cor. Lot 8, Bl. 90	N. 80° 11' W	93.08	7.65		779.44		9277	- 689.80	Book 8 - p. 10
Mon N <sup>o</sup> 2.					+ 771.79			- 597.03	
Angle pt.	N. 77° 12' W	400.00	212.76		+ 984.55		- 338.72	- 935.75	



S. 16° 49' E - 64.00  
 9.9810187    9.4613638  
 1.8061800    1.8061800  
 1.7871987    1.2671438  
 61.26        18.52

S. 3° 06' E    69.93  
 9.9993640    8.7330272  
 1.8446635    1.8446635  
 1.8440275    0.5776907  
 69.83        31.78

S 15° 28' W    39.83  
 9.9832735    9.4350161  
 1.6002103    1.6002103  
 1.5834838    1.0352264  
 38.32        10.84

S. 60° 45' W    44.80  
 9.6889723    9.9407634  
 1.6512780    1.6512780  
 1.3402503    1.5920414  
 21.88        39.09

S. 34° 48' W    31.18  
 9.9144221    9.7564182  
 1.4938761    1.4938761  
 1.4082982    1.2502943  
 25.60        17.80

S. 63° 13' W    29.70  
 9.6538084    9.9507138  
 1.4727568    1.4727568  
 1.1265652    1.4234706  
 13.38        26.57

S 28° 01' E    84.00  
 9.9458677    9.6718468  
 1.9242793    1.9242793  
 1.8701470    1.5961261  
 74.16        39.46

S. 85° 17' W - 93.08  
 8.9150219    9.9995268  
 1.9688568    1.9688568  
 0.9838787    1.9673836  
 7.65        92.77

N 77° 52' W 400.  
 9.7258229    9.9277873  
 2.6020600    2.6020600  
 2.3278829    2.5298473  
 212.76        338.72



Location of Points on North Side. Globe Street Survey - (15)  
 Book 8 - pages 55-62 -

Point	Course	Dist	+N	-S	Total + N.	+ E	-W	Total E	Remarks
Non N <sup>o</sup> 1A					1390.98			-1223.71	
pt. in RR cut	N. 16° 01' E.	283.15	272.15		1663.13	78.13		-1145.68	B. 11 - p. 12
Nail in post	N 14° 16' W	556.20		539.04	2202.17		137.07	-1282.65	B. 11 - p. 14
Spike N <sup>o</sup> 1	N. 25° 30' W	385.70		385.17	2587.34		20.13	-1302.78	B. 11 - p. 14 B. 8 - p. 57
Spike N <sup>o</sup> 2	N 80° 45' E	176.5	28.57		2615.71	174.21		-1128.57	B. 8 - p. 57
Spike N <sup>o</sup> 3	S. 49° 36' E	561.50		36.62	2579.09	43.03		-1085.54	B. 8 - p. 58
Spike N <sup>o</sup> 4	S 26° 39' E	221.6		201.64	2377.45	101.19		-984.35	B. 8 - p. 59
Spike N <sup>o</sup> 5	S 51° 26' E	274.4		171.07	2206.38	214.55		-769.80	B. 8 - p. 60
Spike N <sup>o</sup> 6	S. 74° 54' E	137.70		35.87	2170.51	132.94		-636.86	B. 8 - p. 61 & 62 -

Spike N<sup>o</sup> 1  
 SE cor lot 23 N 45° 35' E 46.00 32.20  
 2587.34  
 2619.54 32.90  
 -1302.78  
 -1269.88  
 See above  
 Book Page 57. (Maintain this corner)

2. 2270.121  
 2. 6255.993  
 9. 6003.238  
 21. 4320.906  
 2. 2270.121  
 9. 6003.238  
 7953.395

N 80° 45' E 179.60  
 N 14° 16' W 556.20  
 N 25° 30' W 385.70



N 80° 45' E 4939 13024 17960 S 49° 36' E 2257 S 26° 39' E 2447 S 51° 26' E 2328 S 74° 54' E	179.60 150.13 44.47	N 16° 01' E 283.15 9.9828054 9.4407784 2.4520166 2.4520166 2.4348220 1.8927950 272.15 78.13	N 14° 16' W 556.20 9.9863952 9.3917028 2.7452310 2.7452310 2.7316262 2.1369338 539.04 137.07	N. 25° 9' 30" 385.70 9.9994077 8.7175932 2.5862496 2.5862496 2.1856173 1.3038428 385.17 20.13
S 51° 26' E 2328 S 74° 54' E	N. 80° 45' E 176.5 9.2061309 9.9943156 2.2467447 2.2467447 1.4128756 2.2410603 28.37 174.21	S. 49° 36' E 56.50 9.8116554 9.8816918 1.7520484 1.7520484 1.5637038 1.6337402 36.52 43.03	S. 26° 39' E 225.6 9.9512224 9.6518004 2.3533391 2.3533391 2.3045615 2.0051395 201.64 101.19	
S 51° 26' E 2328 S 74° 54' E	S. 51° 26' E 274.4 9.7947841 9.8931419 2.4383841 2.4383841 2.2381682 2.3315260 171.07 214.55	S. 74° 54' E 137.70 9.4158152 9.9847400 2.1389339 2.1389339 1.5547491 2.1236739 35.87 132.94	358.96 1190.30 1112.17 4535.51 1258.76 1112.17 1190.30 423.34 W 168.66 168.66 420.34 455.71 21° 43' 20"	

Point	Course	Dist	+N	-S	Total N	+E	-W	Total E
Mon N-1. A					+1390.98			-1223.71
N.W. cor Globe Townsite	S. 57° 14' W	370.80		-200.68	+1190.30	311.80		-1536.51
Mon. N-1. A.					+1390.98			-1223.71
Tram bar in A.E.R.R. abandoned track	S. 73° 59' E	116.05		-32.02	1358.96	111.54		-1112.17
Pipe & caps. =	S. 24° 02' E	329.80		-301.21	1089.77	134.32		-1089.39
	S. 57° 14' W	370.80	Lat			S. 73° 59' E	116.05	Lat
	9.9247349	✓	9.5333731	✓	9.9828054		9.4407784	
	2.5691397	✓	2.5691397	✓	2.0646451		2.0646451	✓
	2.4938746		2.3025128		2.0474565		1.5059235	32.020
	311.80	✓	200.68	✓	1115.4	S. 24° 02' E	329.80	Lat
					9.6098803	Adj.	9.9606196	301.21
			134.32	✓	2.5182567		2.5182567	✓
				✓	2.1281310		2.4788683	



# North City Summit Calculations

175  
178  
97

Point	Course	Dist.	+ N	- S	Total N	+ E	- W	Total E	
Spike					1423.68			-3111.08	Page 5
NW Cor	S 77° 06' 30" W	384.16		- 85.71	1337.97		- 374.48	-3485.56	Page 11 - page 18 (top of page)
<b>North City Line</b>									
pt N=1	N 66° 00' E	379.50	154.36		1492.33	346.69		-3138.87	pt on N line -
pt on hill -	N 17° 47' 30" W	381.50	363.25		1855.58	116.57	116.57	-3255.44	NW 1/4 SW 1/4 NE 1/4 Sec 26. OD. Emery NW 1/4 SW 1/4 NE 1/4 sec 26 - Van Vaganan
	S 3° 16' 30" W	2.0422625		- 109.85	1745.73		- 6.29	-3261.73	
	S 20° 02' 30" W	2.0011283		- 94.19	1761.39		- 34.36	-3289.80	
pt 4	N 66° 00' E	1203.59	489.55		1981.88	1099.55		-2039.32	Last pt. set on City line from which
pt.	S 9° 50' 30" E	167.45		- 64.98	1816.90	28.62		-2010.70	
1/4 1/4 cor.	S 31° 04' E	68.97		58.97	1757.93	35.76		-1974.94	(see page) NE 1/4 SW 1/4 NE 1/4 sec 26
1/4 1/4 cor.	S 36° 11' E	89.27		72.05	1744.80	52.70		-1958.00	OD.
pt. -	See above				1816.90			-2010.70	
pt	S 22° 51' W	141.26		130.17	1686.73		54.85	-2065.55	
stake 2"x2" at Blake	S 14° 00' W	280.49		272.16	1414.57		67.86	-2133.23	See page 5

correct *J.M.*

$$\begin{array}{r} -10^\circ \\ 112 \\ \hline -12 \\ 102.5 \\ \hline +6^\circ 30' \\ 386.7 \\ \hline 16.30 \\ 142.9 \\ \hline +6.30 \\ 127. \\ \hline +6.30 \\ 348.7 \\ \hline +330' \\ 473.8 \\ \hline +10.30 \\ 170.3 \\ \hline +16^\circ \\ 146.95 \\ \hline -1730' \\ 294.1 \end{array}$$



-6	-10	-12	+6°30'	16.30	+6.30	+6.30	+330'	+10.30	+16°	-1730'
383.6	112.	103.5	386.7	142.9	127.	348.7	473.8	170.3	146.95	294.1
9.9976143	9.9933515	9.9904044	9.9971993	9.9817370	9.9971993	9.9971993	9.9991894	9.9926661	9.9928416	9.9794195
2.5838786	2.0492180	2.0107239	2.5873742	2.1550322	2.1038037	2.5424519	2.6755951	2.2312146	2.1671696	2.4684950
2.0814929	2.0425695	2.0011283	2.0845735	2.1367692	2.1010630	2.5396512	2.6747843	2.2238807	2.1500112	2.4479145
381.50	110.03	100.26	384.21	137.51	126.40	346.46	472.92	167.45	141.26	280.49

+15°	+14°
71.40	52.50
9.9849438	9.9869041
1.8536982	1.9637878
1.8396420	1.9506919
68.97	89.27

III

S. 77°06'30" - 384.16	N. 66°00' E 379.50	N. 17°47'30" E 381.50	S. 35°16'30" W - 110.00
9.3485158	9.6093133	9.9787162	9.9992901
2.5845121	2.5792118	2.5814929	2.0425117
1.9330279	2.1885251	2.1602091	2.0408012
85.71	154.36	363.25	109.85
		116.57	6.29
S. 20°02'30" W 100.26	N. 66° E 1203.59	S. 9°50'30" E 167.45	S. 63°55'30" E 68.97
9.9728707	9.6093133	9.9935614	9.6430056
2.0011283	3.0804822	2.2238852	1.8386602
1.9739990	2.6897955	2.2174466	1.4816658
94.19	489.55	164.98	30.32
		28.52	61.95
S. 68°52'30" E 89.27	S. 22°51' W 141.26	S. 14°00' 280.49	
9.9567894	9.9645069	9.9869041	
1.9507055	2.1500192	2.4479174	
1.9074949	2.1145261	2.4348215	
80.82	130.17	272.16	
		54.85	
			1.8315926
			67.86



# West City Summit line Calculation

(13)

Station	Course	Dist	+N	-S	Total N	+E	-W	Total E	Remarks
N.W. corner	City Summit				1337.97			-3485.56	Page 11 -
Blake St.	S. 24° 00' E	356.8		✓ 326.0	1012.00	✓ 145.1		-3340.5	Pt. near Blake Street - Book 11 - p. 27
Top of Hill.	"	714.6	✓	652.8	359.2	✓ 290.7		-3049.8	top of Hill. (stone) 11 - 27
Top of Hill. mark	"	814.7	✓	744.3	-385.1	✓ 331.4		-2718.4	the 1071.4 pt
Top of high ridge	"	527.3	✓	481.7	-866.8	✓ 214.5		-2503.9	
Top of secondary ridge	"	1372.4	✓	1253.7	-2120.5	✓ 558.2		-1945.7	
3900 ft. pt.	"	114.2	✓	104.3	-2224.8	✓ 46.4		-1899.3	B. 11 - page 34
pt near Contact	"	486.70	✓	444.6	-2669.4	✓ 198.0		-1701.3	
SW. cor.	"	893.3	✓	816.0	-3485.4	✓ 363.3		-1338.0	
One mile	"	5280.00		4823.4	-3485.4	2147.6		-1338.0	
1071.4	N. 24° 00' W				+ 359.20			-3049.80	
1033.8	N. 24° 00' W	37.6	34.34		+ 393.54		-15.29	-3065.09	
N.W. cor. W. & T. 3.	N. 76° 08' W	234.6	56.23		+ 449.77		-227.79	-3292.88	B. 11 - page 28
1033.8					+ 393.54			-3065.09	
stone	N. 77° 18' W	213.40	47.22		+ 440.76		-208.12	-3273.21	B. 11 - page 28

Continued on page 39

356.8                      714.6                      814.7                      527.3

5280.00                      4823.4                      2147.6                      1338.0



356.8		714.6		814.7		527.3	
9.9607302	9.6093133	9.9607302	9.6093133	9.9607302	9.6093133	9.9607302	9.6093133
✓ 2.5524248	2.5524248 ✓	✓ 2.8540630	2.8540630 ✓	✓ 2.9109977	2.9109977 ✓	✓ 2.7220578	2.7220578 ✓
2.5131550	2.1617381	2.8147932	2.4633763 ✓	2.8717279	2.5203110 ✓	2.6827880 ✓	2.3373711 ✓
326.0	145.1	652.8	290.7	744.3	331.4	481.7	214.5

1372.4		114.2		486.7		893.3	
9.9607302	9.6093133	9.9607302	9.6093133	9.9607302	9.6093133	9.9607302	9.6093133
✓ 3.1374807	3.1374807 ✓	✓ 2.0576661	2.0576661 ✓	✓ 2.6872613	2.6872613 ✓	✓ 2.9509973	2.9509973 ✓
3.0982109	2.7467940 ✓	2.0183963	1.6669794 ✓	2.6479911	2.2965746 ✓	2.9117275	2.5603106 ✓
1253.9	558.2	104.3	46.4	444.6	198.0	<del>648.2</del>	363.30
						816.0	

5280.		3376.8				
9.9607302	9.6093133	714.6		N 24 W		N 24 W
✓ 3.7226339	3.7226339 ✓	1071.4		52.08		53.13
3.6833641	3.3379472	37.6		N 76 08 W		N 77.13 W
4823.4	2147.6	1033.8				

167.9	N.24° W - 37.60		N 76° 08' W - 234.6		N.77° 13' W 213.40
9.9607302	9.6093133	9.3796015	9.9871549	9.3449124	9.9890998
1.5751878	1.5751878	2.3703280	2.3703280	2.3291944	2.3291944
1.1319180	0.1845011	1.7499295	2.3574829	1.6741068	2.3182942
34.34	15.29	56.23	227.76	47.22	208.12

356.8  
714.7  
1071.5

141



Cemetery corners, located from Pt A.

(107)

Course	Dist	+ N.	- S	Total N.	+ E	- W	Total East	Remarks
Point A.				-2120.5			-1945.7	= Dist. 3785.8 - Book 11 p. 29
A <sup>1</sup>	S. 49° 50' W	320.5		-206.73	-2327.23		-244.92	-2190.62
A <sup>2</sup>	N. 27° W	171.2	152.54		-1967.96		-77.72	-2023.42
A <sup>3</sup>	N. 39° 30' E	159.8	123.30		-1997.20	101.64		-1844.06
A <sup>4</sup>	—	—						
A <sup>5</sup>	N. 71° 55' E	298.3	92.59		-2027.91	283.56		-1662.14
A <sup>6</sup>	N. 85° 30' E	69.7	5.47		-2115.03	69.49		-1876.21
A <sup>7</sup>	S. 89° 40' E	134.2		-0.78	-2121.28	134.20		-1811.50
A <sup>8</sup>	S. 88° 10' E	199.0		-6.36	-2126.86	198.90		-1746.80
A <sup>9</sup>	S. 1° 21' W	300.6		+300.51	-2421.01		-7.43	-1953.13
A <sup>10</sup>	S. 11° 13' W	99.9		-97.99	-2220.40		-19.43	-1965.13
B	N. 19° 43' E	476.6	429.83		-1690.67	154.04		-1791.66 ✓

803.73 612.37 / 94.98 349.50

S 49° 50' W 320.5

N. 27° W 171.2

N. 39° 30' E 159.8



549°50' W 320.5  
 9.8095686  
 2.5058280  
 2.3153966  
 206.73

N. 27° W 171.2  
 9.9498809  
 2.2335038  
 2.1833847  
 152.54

N. 39°30' E 159.8  
 9.8874061  
 2.2035768  
 2.0909829  
 123.30

N 71°55' E 298.3  
 9.4919216  
 2.4746533  
 1.9665749  
 92.59

N 85°30' E 69.7  
 8.8946433  
 1.8432328  
 0.7378761  
 5.47

5.89°40' E 134.2  
 9.9999927  
 2.1277525  
 -1.8925062  
 0.78

S. 88°10' E 199.0  
 8.5050447  
 2.2988531  
 0.8038918  
 6.35

S. 12° W 300.6  
 9.9998672  
 2.4779890  
 2.4778562  
 300.51

S. 11°13' W 99.9  
 9.9916241  
 1.9995655  
 1.9911896  
 97.99

N. 19°43' E 456.6  
 9.9737615  
 2.6595359  
 2.6332974  
 429.83

0.5



# Cemetery Corners located from B

Points	Course	Dist	+ N	- S	Total N	+ E	- W	Total E	Remarks
B					-1690.67			-1791.66	from page 15 -
B <sup>1</sup>	S.35°02'E	64.7		-52.97	-1743.64	37.14		-1754.52	
B <sup>2</sup>	S.0°22'E	191.8		-191.80	-1882.47	1.28		-1790.38	Book 11 - p. 31
B <sup>3</sup>	S.46°57'W	242.4		-165.47	-1856.14		177.14	-1968.80	
B <sup>4</sup>	S.53°12'W	268.3		-160.72	-1851.39		214.84	-2006.50	
B <sup>5</sup>	S.71.24'W	87.90		-28.04	-1718.71		83.31	-1874.97	
B <sup>6</sup>	S.83°28'W	150.0		-17.07	-1707.74		149.03	-1940.69	
"C"	S.80°41'E	188.7		-30.55	1721.22	186.20		-1605.46 ✓	
"D"	N.45°54'E	390.5	271.75		-1418.92	280.43		-1511.23	

# Cemetery Corners located from D

D					-1418.92			-1511.23	See above
D <sup>1</sup>	N62°48'E	174.50	79.76		-1339.16	155.20		-1356.03	
D <sup>2</sup>	S25°34'E	92.1		83.44	-1502.36	39.92		-1471.31	
D <sup>3</sup>	S20°36'E	83.2		77.88	-1496.80	29.27		-1481.96	Book 11 - page 32
D <sup>4</sup>	S80°40'W	81.60		13.23	-1432.15		80.52	-1591.75	
D <sup>5</sup>	N0°46'E	327.2	327.17		-1091.75	4.38		-1506.85	
D <sup>6</sup>	N18°48'E	154.0	145.78		-1273.14	49.63		-1461.60	
D <sup>7</sup>	N25°27'E	323.6	292.20		-1126.72	139.07		-1372.16	

S.35°02'E 64.7
S.0°22'E 191.8
S.46°57'W 242.4

9.9121875
9.7589519
9.9999911
7.8061458
9.8341894
9.8637737

2.3845326 ✓
2.3845326 ✓



S. 35° 02' E 64.7  
 9.9131875 9.7589519  
 1.8109043 ✓ 1.8109043 ✓  
 1.7240918 1.5698562  
 52.97 37.14

S. 0° 22' E 191.8  
 9.9999911 7.8061458 ✓  
 2.2828486 ✓ 2.2828486 ✓  
 2.2828397 0.0889944  
 191.80 1.28

S. 46° 57' W 242.4  
 9.8341894 9.8637737  
 2.3845326 ✓ 2.3845326 ✓  
 2.2187220 2.2483063  
 165.47 177.14

S. 53° 12' W 268.3  
 9.7774439 9.9034868  
 2.4286207 ✓ 2.4286207 ✓  
 2.2060646 2.3321075  
 160.72 214.84

S. 71° 24' W 87.90  
 9.5037353 9.9767022  
 1.9439889 ✓ 1.9439889 ✓  
 1.4477242 1.9206911  
 28.04 83.31

S. 93° 28' W 150.0  
 9.0560706 9.9971704  
 2.1760913 ✓ 2.1760913 ✓  
 1.2321619 2.1732617  
 17.07 149.03

Se S. 59° 53' E 188.7  
 9.7004981 9.9370189  
 2.2757719 ✓ 2.2757719 ✓  
 1.9762700 2.2127908  
 94.69 163.23

N 45° 54' E 390.5  
 9.8425548 9.8562008  
 2.5916210 ✓ 2.5916210 ✓  
 2.4341759 2.4478218  
 271.75 280.43

S 80° 41' E 188.7  
 9.2092224 9.9942330  
 2.2757719 2.2757719  
 1.4849943 2.2700049  
 30.54 186.30

N. 62° 48' E 174.5  
 9.6600093 9.9491051  
 2.2417954 ✓ 2.2417954 ✓  
 1.9018047 2.1909005  
 79.76 155.20

S. 25° 34' E 92.5  
 9.9552469 9.6250422  
 1.9661417 ✓ 1.9661417 ✓  
 1.9213886 1.6011839  
 83.44 39.92

S. 20° 36' E 83.2  
 9.9713085 9.5463472 ✓  
 1.9201233 ✓ 1.9201233 ✓  
 1.8914268 1.4664705  
 77.88 29.74

S. 80° 40' W 81.6  
 9.2099917 9.9942122  
 1.9116902 ✓ 1.9116902 ✓  
 1.1216819 1.90119024  
 13.23 80.52

N. 0° 46' E 327.2  
 9.9999611 8.1264710  
 2.5148133 ✓ 2.5148133 ✓  
 2.5147744 0.6412843  
 327.17 4.38

N 18° 48' E 154.0  
 9.9761891 9.5082141 ✓  
 2.1875207 ✓ 2.1875207 ✓  
 2.1637098 1.8957348  
 145.78 49.63

N. 25° 27' E 323.6  
 9.9556688 9.6331889  
 2.5100085 ✓ 2.5100085 ✓  
 2.4656773 2.1431974  
 292.20 139.07

C =  
 S 80° 41' E 188.7  
 9.2092224 9.9942330  
 2.2757719 2.2757719  
 1.4849943 2.2700049  
 30.55 186.20



Cemetery Corner located from pt. G.

pt	Course	Dist	+N	-S	Total N	+E	-W	Total W	Remarks
C					-172.22			-1605.46	See page 17
C <sup>1</sup>	N45°19'E	156.4	110.08		-1611.14	111.20		-1494.26	
C <sup>2</sup>	N63°41'E	197.0	87.40		-1633.82	176.58		-1428.88	
C <sup>3</sup>	S47°07'E	168.3		114.53	-1835.75	123.32		-1482.14	Book 11 - page 33
C <sup>4</sup>	S36°41'E	103.6		83.08	-1804.30	61.88		-1543.58	
C <sup>5</sup>	S18°38'E	146.1		138.44	-1859.66	46.68		-1558.70	
C <sup>6</sup>	S2°49'W	69.1		69.01	-1790.23		3.39	-1608.85	
C <sup>7</sup>	S8°31'E	170.0		173.07	-1894.29	25.92		-1579.54	
C <sup>8</sup>	S17°41'W	154.0		146.72	-1867.94		46.80	-1652.26	

N. 45° 19' E 156.4		N. 63° 41' E 197.		S. 47° 07' E 168.3	
98470714 ✓	98518721 ✓	96467290 ✓	99524813 ✓	92328331 ✓	98649504 ✓
21942367 ✓	21942367 ✓	22944662 ✓	22944662 ✓	22260841 ✓	22260848 ✓
20413081 ✓	20461088 ✓	19411952 ✓	22469175 ✓	20589172 ✓	20910352 ✓
11008 ✓	11120 ✓	87.40 ✓	176.58 ✓	114.53 ✓	123.32 ✓
S. 36° 41' E 103.6		S. 18° 38' E 146.1		S. 2° 49' W 69.1	
99041470 ✓	97762593 ✓	99766171 ✓	95044853 ✓	99994750 ✓	86914379 ✓
20153598 ✓	20153598 ✓	21646502 ✓	21646502 ✓	18394780 ✓	18394780 ✓
19195068 ✓	17916191 ✓	21412673 ✓	16691355 ✓	18389530 ✓	05309159 ✓
83.08 ✓	161.88 ✓	138.44 ✓	46.68 ✓	69.01 ✓	3.39 ✓
S. 8° 31' E 170.0		S. 17° 41' W 154.			
99951844 ✓	91705465 ✓	99789789 ✓	94825248 ✓		
22430380 ✓	22430380 ✓	321875207 ✓	21875207 ✓		
22382224 ✓	14135845 ✓	21664996 ✓	116700455 ✓		
173.07 ✓	25.92 ✓	146.72 ✓	46.80 ✓		

Location of NW cor. South Globe Town - SE cor. Sec 16 and etc.



# Location of NW cor. South Globe town - SE cor Sec 16 and etc.

Point	Course	Dist	+N	-S	Total N	+E	-W	Total W	Remarks
" A"					-2120.50			-1945.70	See page 15.
3900 + 100 Pt.	S 24° E	114.20		-104.33	-2224.83	+46.45		-1899.25	South Globe Town site stone (NW corner)
N.W. cor.	N 89.51° E	572.4	1.50		-2223.33	572.4		-1326.85	
	N -	1.6	1.60		-2221.73			-1326.85	
Sec. cor.	N 89.51° E	1230.2	3.22		-2221.61	1230.2		-669.05	SE cor of Sec. 16 -
	N -	1.4	1.40		-2220.21			-669.05	
N.E. cor.	N 89.51° E	1705.6	4.46		-2220.37	1705.6		-193.65	at Globe Town site line stake
	N -	0.6	0.60		-2219.77			-193.65	

N 89.51° E 572.4  
 7.4179681 9.9999985  
 2.7576996 ✓ 2.7576996 ✓  
 0.1756677 2.7576981  
 1.50 ✓ 1.572.40

N 89.51° E 1230.2  
 7.4179681 9.9999985  
 3.0899757 ✓ 3.0899757 ✓  
 0.5079438 3.0899742  
 3.22 1230.2 ✓

N 89.51° E 1705.6  
 7.4179681 9.9999985  
 3.2318772 ✓ 3.2318772 ✓  
 0.6498453 3.2318757  
 4.46 1705.6 ✓

S 24° E 114.20  
 9.9607302 9.6093133  
 2.0576661 2.0576661  
 2,0183963 1.6669794  
 104.33 46.45

2.4183963  
 1.6669794

2772

N  
O  
H



Ariz. Eastern abandoned Steam Trestles in North Globe. —

pt.	Course	Dist	+N	-S	Total N	+E	-W	Total E	Remarks
<u>Trestle at Manuel's Hotel</u>									
Mail in post					+2202.17			-1282.65	Page 9 -
N. end	N 13°00'30" E	39.40	38.4		2240.6	8.9		-1273.8	B. 10 p. 73.
S. end	S 19°17'30" E	142.35		134.40	2067.77	47.2		-1235.5	
<u>High Trestle over Pinal Creek</u>									
Spike in RR. cut					+1663.13			-1145.68	page 9 - Book 10 - p. 74
pt.	N 9°04' E	256.25	253.1		+1916.2	40.4		-1105.3	Spike in old Embankment
	N 16°26' E	4.00	3.8		+1920.0	1.1		-1104.2	South end of Trestle.
	N 16°26' E	191.00	187.1		+2107.1	55.2		-1049.0	North end " "
<u>Trestle near Green Saloon.</u>									
Spike in RR. cut					+1663.13			-1145.68	page 9 -
N. end.	S 1°09' W	65.90		65.9	+1597.2		1.3	-1147.0	Book 10 - page 74.
Course to S. end	S 5°45' E	-		199.6	+1463.5	13.1		-1132.6	for direction only —
					2319.84			-1384.11	Man. No 2 - (Bessemer)
	S 48°21' E	120.30		80.28	2239.56	90.26		-1274.85	

Pendleton's Points in North Globe. —



# Pendleton's Points in North Globe. —

		+ N	- S		+ E	- W	
N <sup>o</sup> 1				396.19			- 1018.77 <small>See page 29</small> Road street
N <sup>o</sup> 2	N 20° 30' W	986.10	923.65	2319.84		345.34	- 1364.11 Maurel's Hotel
N <sup>o</sup> 3	N 12° 32' E	309.60	302.22	2622.06	67.19		- 1296.92 Mountain View
N <sup>o</sup> 4	N 17° 32' E	283.90	270.71	2892.77	85.53		- 1211.39 Warehouse
			1496.58				
			2892.97				
			1386.39				

<p>N 20° 30' W 986.10</p> <p>9.9715876    9.5443253</p> <p>2.9939210    2.9939210</p> <p>2.9655086    2.5382463</p> <p style="padding-left: 20px;">923.65    345.34</p>	<p>N. 12° 32' E 309.60</p> <p>9.9895254    9.3364749</p> <p>2.4908010    2.4908010</p> <p>2.4803264    1.8272759</p> <p style="padding-left: 20px;">302.22    67.19</p>	<p>N. 17° 32' E 283.90</p> <p>9.9793398    9.4789423</p> <p>2.4531654    2.4531654</p> <p>2.4325052    1.9321077</p> <p style="padding-left: 20px;">270.71    85.53</p>
---	---	---

<p>S 48° 21' E 120.80</p> <p>9.8225463    9.8734476</p> <p>2.0820649    2.0820649</p> <p>1.9046132    1.9555145</p> <p style="padding-left: 20px;">80.28    90.26</p>	
---	--

11



Globe townsite corners.

Point	Course	Dist	+ N	- S	Total North	+ E	- W	Total E	Remarks
N.W. cor.					+ 1190.30			- 1535.51	
N.E. cor.	N 68° 16' E	2631.00	974.22		2164.52	2443.98		+ 908.47	N.W. cor. NE 1/4 NE 1/4

see page 36

33.40  
3.70  
40.

N 0° 21' 20" E 131360  
9.9999916 7.792 7820  
3 1184631 3118 4631

N 89° 40' 50" E 13000  
77462705 9.9999933  
31139434 31139434  
21129367



$N 0^{\circ} 21' 20'' E$  131360  
 $9.9999916$  7.792 7820  
 $3.1184631$  3.118 4631  
 $3.1184547$  0.911 2451

1313.6                      8.15

~~$N 89^{\circ} 40' 50'' E$  1300.0  
 $7.7462705$  9.9999933  
 $3.1139434$  3.1139434  
 $0.8602139$  3.1139367~~

724                      1303.0

$N 68^{\circ} 16' E$  2631.00  
 $9.5685387$  9.9679771  
 $3.4201208$  3.4201208  
 $2.9886595$  3.3880979  
    0.834  
    1.45  
    2443.98



# Location of Point near Haskins Rd. -

27

Pt.	Course	Dist	+N	-S	Total N	+E	-W	Total E
Mon N-2					771.79			-597.03
Pt N-1	N 75° 50' W	214.10	52.39		824.18			207.59 - 804.63
" 2	N 8° 28' 30" W	220.03	217.63		1041.81			32.43 - 837.05
" 3	N 5° 58' E	138.50	137.76		1179.57	14.40		-822.65
" 3A	N 4° 25' 30" W	162.05	161.56		1341.13			12.55 - 835.20
" 3B	N 20° 34' E	161.70	151.40		1492.53	56.81		-778.39

from Page 5. -

## Connection with Haskins Rd. -

Sp N-2					1041.81			-837.05	See above.
Sp N-4	N 23° 25' E	76.50	70.20		1112.01	30.40		-806.65	
Sp N-5	N 46° 05' E	212.05	147.39		1259.40	153.07		-653.58	
Sp N-6	N 72° 21' E	261.25	78.92		1338.32	249.04		-404.54	

## - Haskins Rd -

Sp N-1					824.18			-804.63	
Sp.	N 13° 48' E	131	127.22		951.40	31.25		-773.30	spike in center of Haskins Rd near Pined Creek.
Sp.	N 10° 27' E	249.50	245.36		1196.76	45.25		-728.13	spike in center of Rd, where road commences to curve to Right.
Sp. N-5	N 50° 06' E	97.40	62.48		1259.24	74.72		-653.41	

Mon N-2					771.79			-597.03
(Mon-2)	N 57° 51' W	400.00						

N 75° 50' W 214.10
N 8° 28' 30" W 220.03
N 5° 58' E 138.50

9.9887109
9.9865872
9.9952315
9.1684322
9.9976408
9.0168239



N 75° 50' W 214.10  
 9.3887109 9.9865872  
 2.3306167 2.3306167  
 1.7193276 2.3172039  
 52.39 207.59

N 42° 35' W 162.05  
 9.9986937 8.8889883  
 2.2096490 2.2096490  
 2.2083427 1.0986373  
 161.56 12.55

N 23° 25' E 76.50  
 9.9626719 9.5992441  
 1.8836614 1.8836614  
 1.8463333 1.4829055  
 70.20 30.40

N. 13° 48' E 131.00  
 9.9872793 9.3775493  
 2.1172713 2.1172713  
 2.1045506 1.4948206  
 127.22 31.25

N 8° 28' 30" W 220.03  
 9.9952315 9.1684322  
 2.3424819 2.3424819  
 2.3377134 1.5109141  
 217.63 32.43 x

N 20° 34' E 161.70  
 9.9713984 9.5456745  
 2.2087100 2.2087100  
 2.1801084 1.7543845  
 151.40 56.81

N. 46° 05' E 212.05  
 9.8411162 9.8575432  
 2.3273589 2.3273589  
 2.1684751 2.1849021  
 147.39 153.07

N. 10° 27' E 249.50  
 9.9927362 9.2585832  
 2.3970705 2.3970705  
 2.3898067 1.6556537  
 245.36 45.25

N 5° 58' E 138.50  
 9.9976408 9.0168239  
 2.1414498 2.1414498  
 2.1390906 1.1582737  
 137.76 14.40

N. 72° 25' E 261.25  
 9.4801401 9.9792198  
 2.4170563 2.4170563  
 1.8971964 2.3962761  
 78.92 249.04

N 50° 06' E 97.40  
 9.8071626 9.8848889  
 1.9885590 1.9885590  
 1.7957216 1.8734479  
 62.48 74.72  
 179.60  
 161.16  
 18.44

N 89° 07' W  
 1844  
 N 75° 51' W



Print course Dist. + M - S total N + E - W total E

				771.79		597.03
Man 2						
Pt N <sup>o</sup> 1	N 45° 47' E	164.0	114.37	7886.18	117.54	-4194.9
Pt N <sup>o</sup> 2	N 6° 13' E	158.70	157.90	1444.06	17.18	-402.31
Pt N <sup>o</sup> 3	N 23° 17' W	193.40	177.65	+1271.71	77.44	-479.75
Pt N <sup>o</sup> 4	N 58° 28' E	90.70	47.43	1269.14	77.30	-402.45

Proposed New Haskins Rd. E. of Webster House. 195-60-0

Man N <sup>o</sup> 2				771.79		- 597.03
Pt N <sup>o</sup> 1	N 25° 47' E	134.34	120.97	892.76	58.43	- 538.60 spike in stump.
N <sup>o</sup> 2	N 13° 47' W	158.70	154.13	1046.89	- 37.81	- 176.41
N <sup>o</sup> 3	N 43° 17' W	193.40	140.79	1187.68	- 132.60	- 709.01
N <sup>o</sup> 4	N 38° 28' E	90.70	71.02	1258.70	56.42	- 652.59 ✓ spike N <sup>o</sup> 5 page 20.

Proposed New Haskins Rd. West of Webster House.

Pt N <sup>o</sup> 1				892.76		- 538.60 spike in stump. (see above)
N <sup>o</sup> 2	N 6° 13' W	148.40	62.21	954.97	134.73	- 673.33
N <sup>o</sup> 3	N 87° 16' W	42.55	2.03	917.00	42.50	- 715.83
N <sup>o</sup> 4	N 73° 01' W	101.00	29.50	986.50	96.60	- 812.43
Sp. N <sup>o</sup> 2	N 23° 23' W	60.2	55.25	1041.75	23.89	- 836.32 ✓ 2 (see page 20)

N 45° 47' E 134.34      N 6° 13' E 158.70  
 98434655      98553421      99994386      90345825  
 21282053      21282053      20005719      20005719



N 45° 47' E 134.34  
 9.8434655  
 2.1282053  
 1.9716708

9.8553421  
 2.1282053  
 1.9835174

N 6° 13' E 158.70  
 9.9994386  
 2.2005769  
 2.1980155  
 157.90

9.0345825  
 2.2005769  
 1.2351594  
 171.8

N 23° 17' W 175.70  
 9.9631082  
 2.2864565  
 2.2495647  
 177.65

9.5969030  
 2.2864565  
 1.8833595  
 77.44

N 58° 28' E 90.70  
 9.7184971  
 1.9576073  
 1.6761044  
 47.43

9.9306109  
 1.9576073  
 1.8882182  
 77.30

N 7° 50' W  
 101.37  
 N 25° 47' E 134.34  
 39.34  
 N 13° 47' W 158.70  
 29.30  
 N 43° 17' W 193.40  
 81.45  
 N 38° 28' E 90.70 Sp. N° 5

N. 25° 47' E  
 91.  
 N 65° 13' W 148.40  
 22.03  
 N 87° 16' W 42.00  
 14.15  
 N 73° 01' W 101.00  
 49.38  
 N 23° 23' W 60.2 E Sp. N° 2

N. 25° 47' E 134.34  
 9.9544574  
 2.1282053  
 2.0826627  
 120.97

9.6384585  
 2.1282053  
 1.7666638  
 58.43

N 13° 47' W 158.70  
 9.9873103  
 2.2005769  
 2.1878872  
 154.134

9.3770347  
 2.2005769  
 1.5776116  
 37.81

N. 43° 17' W 193.40  
 9.8621148  
 2.2864565  
 2.1480713  
 140.79

9.8360750  
 2.2864565  
 2.1225315  
 132.60

N. 38° 28' E 90.70  
 9.7938317  
 1.9576073  
 1.8513525  
 71.02  
 56.42

N 65° 13' W 148.40  
 9.6224088  
 2.1714339  
 1.7938427  
 62.21

9.9580378  
 2.1714339  
 2.1294717  
 134.73

N. 87° 16' W 42.00  
 8.6784052  
 1.6288926  
 0.3072978  
 2.03

9.9995056  
 1.6288926  
 1.6283982  
 42.50

N. 73° 01' W 101.00  
 9.4655219  
 2.0043214  
 1.4698433  
 29.50

9.9806049  
 2.0043214  
 1.9849563  
 96.60

N 23° 23' W 49.38 60.20  
 9.9627812  
 1.7795965  
 1.7420777  
 55.25

9.5986602  
 1.7795965  
 1.3782567  
 23.89

N  
8



Location of New Broad St. as by Ordinance No. 92 (East side)

Dist Course Dist +N - S Total N + E - W Total E (Remarks)

Dist	Course	Dist	+N	-S	Total N + E	-W	Total E	Remarks
Man No. 2					771.79		-5970.3	
1	N 53° 12' W	251.27	150.70		922.49	40	201.44 - 798.47	Smith's Survey
2	N 88° 27' W	119.86	3.24		925.73	40	1198.2 - 918.28	
3	S 51° 55' 30" W	62.91		38.79	886.94	40	49.52 - 967.80	
4	N 30° 52' W	18.80	16.13		903.07	40	9.64 - 977.44	
5	N 26° 56' 30" W	53.55	47.73		950.80	40	24.26 - 1001.70	
6	N 21° 26' W	65.15	60.64		1011.44	50	23.80 - 1025.50	
7	N 16° 59' W	36.65	35.05		1046.49	50	10.70 - 1036.20	
8	N 14° 26' W	55.00	53.26		1099.75	50	13.71 - 1049.91	
9	N 14° 37' 30" W	63.43	61.37		1161.12	50	16.0 - 1065.91	
10	N 8° 27' W	206.30	204.06		1365.18	50	30.31 - 1096.21	
stake	N 68° 16' E	83.16	30.79		1395.97	77.24	1018.97	Line toward street
No. 3	S 51° 55' 30" N	62.91			886.76	40	967.57	
4	S 51° 55' 30" W	60.48		37.30	849.36	40	47.60 - 1015.17	919.97
5	N 30° 52' W	26.39	22.57		872.03	40	13.49 - 1028.66	
6	N 26° 49' W	63.43	56.68		928.71	40	28.46 - 1057.12	
7	N 21° 26' W	65.15	60.64		989.35	40	23.80 - 1080.92	
8	N 17° 09' 30" W	44.02	42.06		1031.41	50	12.98 - 1093.90	
9	N 14° 26' W	55.0	53.26		1084.67	50	13.80 - 1107.70	
10	N 14° 37' 30" W	63.25	61.20		1145.87	50	15.97 - 1123.67	
11	N 8° 27' W	198.33	196.18		1342.05	50	29.14 - 1152.81	
	B 68° 16' E	144.80	53.54		1395.59	134.54	1018.77	

Find an error in course

41.60  
64.16  
1.9  
144.80



N 53° 12' W 251.27  
 9.777 4439      99034868  
2.4006588      24006588  
 2.1781027      2.3041456  
 150.70      201.44

N 88.27 W 119.86  
 8.4321561      99998411  
2.0786743      20786743  
 0.5108304      2.0785154  
 3.24      119.81

S 51° 55' 30" W 62.91  
 97900686      98960874  
1.7987197      1.7987197  
 1.5887883      1.6948071  
 38.79 ✓      49.52 ✓

N 30° 52' W 1880  
 99336713      97101529  
12741578      12741578  
 1.2078291      0.9843107  
 16.13      964

N 26° 56' 30" W 53.55  
 99501057      96561779  
1.7287595      1.7287595  
 1.6788652      1.3849374  
 47.73      24.24

N 21° 26' W 65.15  
 99688766      95627904  
18139144      18139144  
 1.7827910      1.3767048  
 60.64      23.80

Location of Old Paroad Street - N. of Man. No. 2 -

Pt	Course	Dist	+ N	- S	Total N	+ E	- W	Total E	Remarks
Mano-2..					771.79			- 597.03	
Pt. 1	N. 57° 52' W	400	212.76		984.55		- 338.72	- 935.75	
Stone	N. 11° 24' 10" W	419.92			1396.19 ✓			- 1018.77	Old Paroad ✓

N. 57° 52' W 400  
 9.7218229      9.9277873  
2.6020600      2.6020600  
 2.3278829      2.1298473  
 212.76      338.72

99100720      97101529  
 1.7987197      1.7987197  
 1.5887883      1.6948071  
 38.79 ✓      49.52 ✓



West Side of Scott St as by Wayne

Point	Course	Dist	+ N	- S	+ E	- W	Total E	Total W	Notes
Mon 2.					771.79			-597.03	
1	N 84° 10' W	93.31	9.48		781.27		192.82	689.85	Lo-corner
2	N 78° 25' W	113.50	22.70		803.97		111.00	800.85	Bankers N.E. Cor.
3	N 78° 25' W	40.00	8.03		812.00		39.18	840.03	N Cor Bankers Ave and Scott
4	N 78° 25' W	51.50	10.34		822.34		50.45	890.48	Cor Silver and Scott
5	N 78° 25' W	61.75	12.39		834.73		60.49	950.97	N Cor Silver and Scott
6	N 49° 32' W	118.00	76.58		911.31		89.77	1040.64	Tr first bend
7	N 37° 38' W	143.50	113.64		1024.95		87.62	1128.26	Tr 2 <sup>nd</sup> bend
8	N 16° 23' W	311.00	299.37		1323.32		87.72	1215.98	Jo a pt on T's to line
9	N 68° 16' E	211.30	78.24		1401.56	1962.8		-1019.90	Jo Stone
			1043.86		1395.97			1018.97	5

Correct to S 5.59 Correct to E 0.93

N 84° 10' W 93.31	N 78° 25' W 113.50	N 78° 25' W 40.00
9.0090436	9.9977453	9.3027485
1.9699282	1.9699282	2.0549959
0.9769718	1.9676735	1.3577444
9.48	92.82	22.70
N 78° 25' W 51.50	N 78° 25' W 61.75	
9.3027485	9.9910637	9.9910637
1.9118572	1.7118072	1.7906370
1.0145557	1.7028709	1.0933855
10.34	50.45	12.39
N 37° 38' W 143.50	N 16° 23' E 311.00	
9.9920893	9.9819979	9.4503452
2.1568519	2.4927604	2.4927604
2.0555412	1.9426130	2.4747583
113.64	82.62	2.98.37

Stamp N 68° 16' E 100.55 3723 +1358.96 59.4 -1112.17 from loc in A E abandoned track  
 1396.19 93.40 -1018.77 in old road st

698 509.



Center line of Scott Street as by Dutton & Wayne

pt	Course	Dist	+N	-S	Total N	+E	-W	Total E	
					771.79			-597.03	
Man N <sup>o</sup> -2					771.79			-597.03	
Point	N 57° 52' W	14.31	6.95		778.74		-12.12	-609.15	
along Bankers Garden	N 78° 59' W	212.56	40.62		819.36		208.65	-817.80	Intersection pt. centerline of Bankers ave.
	N 78° 59' W	76.48	14.61		833.97		75.07	-892.87	Intersection point with Silver St.
8	N 78° 59' W	53.97	10.31		844.28		52.97	-945.84	angle pt.
9	N 49° 57' W	112.46	72.36		916.64		89.09	-1034.93	
10	N 37° 54' W	138.60	109.37		1026.01		85.14	-1120.07	
	N 16° 06' 30" E	307.83	295.75		1321.76		85.41	-1205.48	
	N 68° 16' E	201.00	74.43		1396.19	186.71		1018.77	to Stone center Road.

N 57° 52' W 14.31		N 78° 59' W 212.56		N 78° 59' W 76.48	
9.7258229	9.9277873	9.2812483	9.9919220	9.2812483	9.9919220
1.1156396 ✓	1.1556396 ✓	2.3274815 ✓	2.3274815 ✓	1.8835479 ✓	1.8835479 ✓
0.8414625	1.0834269	1.6087298	2.3194035	1.1647962	1.8754699
6.95	12.12	40.62	208.65	14.61	75.07
N 78° 59' W 53.97		N 49° 57' W 112.46	208.65	N 37° 54' W 138.60	N 16° 06' 30" E 307.60
9.2812483	9.9919220	9.8085188	9.8839357	9.8971233	9.7883701
1.7321524 ✓	1.7321524 ✓	2.0509981 ✓	2.0509981 ✓	2.1417632	2.1417632
1.6134007	1.7240744	1.8595169	1.9349338	2.0388865	1.9301333
10.31	52.97	72.36	86.09	109.37	85.14
9.5685387	9.9679771	9.5685387	9.9679771	9.9679771	9.9679771
2.2926990	2.2926990	2.3031961	2.3031961	2.3031961	2.3031961
1.8612377	2.2606761	1.8717348	1.8717348	2.2711732	2.2711732
72.65	182.25	74.43	74.43	186.71	186.71



Random line along N.W. Globe Township line

Point	Course	Dist	N	S	Total N	Total S	Remarks
1/3 corner					1190.30	-1535.51	N.W. cor. Globe Township
154.20	S. 20° 42' E	154.20	144.23	1046.67	54.52	-1480.99	Book 11 page 41
				1190.30		1535.51	
212.91	"	212.91	199.15	991.15	75.28	-1460.23	" "
				1190.30		1535.51	
Sp. N-1	"	401.30	375.37	814.93	14.90	-1393.61	" "
				1190.30		1535.51	
746.30	"	746.30	698.07	492.23	263.89	-1271.62	
				1190.30		1535.51	
Sp. N-2	"	868.30	812.19	378.11	307.03	-1228.48	
				1190.30		1535.51	
Sp. N-3	"	927.70	867.76	322.54	328.04	-1207.47	
Sp. N-2				814.93		-1393.61	
Stone	S. 69° 21' W	135.25	47.60	767.33		12638-1519.99	Stone at Blank and Beckman
				814.93		-1393.61	
Sp. N-1				814.93		-1393.61	
Stone	N. 55° 17' W	141.98	808.43	895.77		116.72-1510.33	Stone at Blank and Maxwell Sts
	S. 84° 18' W	58.20	4.58	891.19		57.91-1568.24	"
746.30	S. 32° 39' W			492.23		1271.62	
Stone	S. 74° 04' W	100.74	84.81	407.42		54.36-1325.98	
				492.23		-1271.62	
Stone	N. 51° 33' W	248.23	154.33	646.56		194.42-1466.04	Stone at Silver and Blank
Stone	S. 68° 32' W	170.55	62.41	584.15		158.72-1624.76	Stone at Silver and Gray
Sp. N-3				322.54		-1207.47	
Stone	N. 83° 47' E	11.03	1.19	323.73	11.0	-1196.47	



154.20  
 9.9709939 9.5485256  
 2.1880844 2.1880844  
2.1590793  
 144.23

746.30  
 9.9709939 9.5485256  
 2.8729134 2.8729134  
2.8439073 2.4214390  
 698.07 243.89

S. 69 21 1/2 W 135.05  
 9.5471866 9.9711846  
 2.1304946 2.1304946  
1.6776912 2.1616792  
 476.08 126.38

S. 74 04 1/2 E 100.74  
~~9.4383506 9.9830042~~  
~~2.0032019 2.0032019~~  
~~1.4415525 1.9862067~~  
 27.64 96.97

N 83 47 1/2 E 11.03  
 9.0340022 9.9974455  
1.0425755 1.0425755  
 0.0765777 1.0400210  
 1.19 11.0

212.91  
 9.9709939 9.5485256  
 2.3281961 2.3281961  
2.2991900 1.8767217  
 199.15 75.28

868.30  
 9.9709939 9.5485256  
 2.9386698 2.9386698  
2.9096637 2.4871954  
 831.11 307.05  
 812.19

N. 55 17 1/2 W 141.98  
 9.7554168 9.9149042  
 2.1522272 2.1522272  
1.9076440 2.8671314  
 80.84 116.72

N. 51 33 1/2 W 248.23  
 9.7935931 9.8938957  
 2.3948543 2.3948543  
2.1884474 2.2887500  
 154.33 194.42

S 82 39 1/2 W 100.94  
 9.9252623 9.7320946  
 2.0032019 2.0032019  
1.9284642 1.7352965  
 84.81 54.36

401.30  
 9.9709939 9.5485256  
 2.6034692 2.6034692  
2.5744631 2.1519948  
 375.37 141.90

927.70  
 9.9709939 9.5485256  
 2.9674076 2.9674076  
2.9384015 2.5159332  
 867.76 328.04

S. 84 18 1/2 W 58.20  
 8.9964023 9.9978536  
 1.7649230 1.7649230  
0.6613253 1.7627766  
 4.58 57.91

S. 68 32 W 170.55  
 9.5634335 9.9687773  
 2.2318517 2.2318517  
1.7952852 2.2066290  
 62.41 158.72

1080  
 1080  
 1080  
 1080  
 1080



Location of S.E. cor. of West Globe T.S.

33

Pt.	Course	Dist	+N	-S	Total N.	+E	-W	Total E	Remarks
Stone					+ 584.15			-1624.76	Distance Stone <del>to</del> <sup>to</sup> <del>corner</del> <sup>corner</sup> and <del>from</del> <sup>from</sup> <del>the</del> <sup>the</sup> <del>top</del> <sup>top</sup> of Hill
Stone	S 68° 32' W	248.70		- 91.01	493.14		-231.45	-1856.21	Distance and Manual.
Pt.	S 68° 32' W	64.40		- 23.57	469.57		-59.93	-1916.14	Pt. Top of Hill from which
Stone	S 54° 40' W	65.00		- 37.59	431.98		-53.03	-1969.17	marked E.H. N° 4883.
Stake	East	1.50		- 0.0	431.98		+ 1.50	-1967.67	marked 1330.60 and S.E. cor.

S 68° 32' W	248.70	S 68° 32' W	64.40	S 54° 40' W	65.00
9.5634335	9.9687773	9.5634335	9.9687773	9.7621775	9.9115840
2.3956758	2.3956758	1.8088859	1.8088859	1.8129134	1.8129134
1.9597093	2.3644531	1.3723194	1.7776632	1.5750909	1.7244974
91.01	231.45	23.57	59.93	37.59	53.03

W. line of Globe Township - (Random line)

N.W. T.S. Cor.	Course	Dist	+N	-S	Total N.	+E	-W	Total E	Remarks
					+ 1190.30			-1535.51	
927.70	S 20° 42' E	927.70	✓	- 867.81	+ 322.49	✓	327.92	-1207.59	
1080.54	S 24° 54' E	152.84		-138.63	+ 183.86	✓	64.35	-1143.24	
1913.45	S 22° 30' E	832.91	✓	-769.51	-585.65	✓	318.74	-824.50	
2160.45	S 19° 06' 30" E	247.00	✓	-233.39	-819.04	✓	80.86	-743.64	
2539.06	S 22° 19' 30" E	378.61	✓	-350.23	-1169.27	✓	143.82	-599.82	
3666.52	S 21° 04' E	1127.46		-1052.15	-2221.42		405.27	-194.55	
4321.11	S 20° 01' E	654.59	✓	-615.04	-2836.46		224.06	+ 29.51	Diff. Lat. -2835.63 Dep. + 27.11

3666.52					-2221.42			-194.55	
Corner Stone	697.15	S 21° 30' E		-644.17	-2865.59	+253.21		+ 58.66	Stone for City limit corner near Mexican Rd.

Globe Town Site Corners

N.W. Cor.	+N	-S	Total N.	+E	-W	Total E
-----------	----	----	----------	----	----	---------



# Globe Town Site Corners

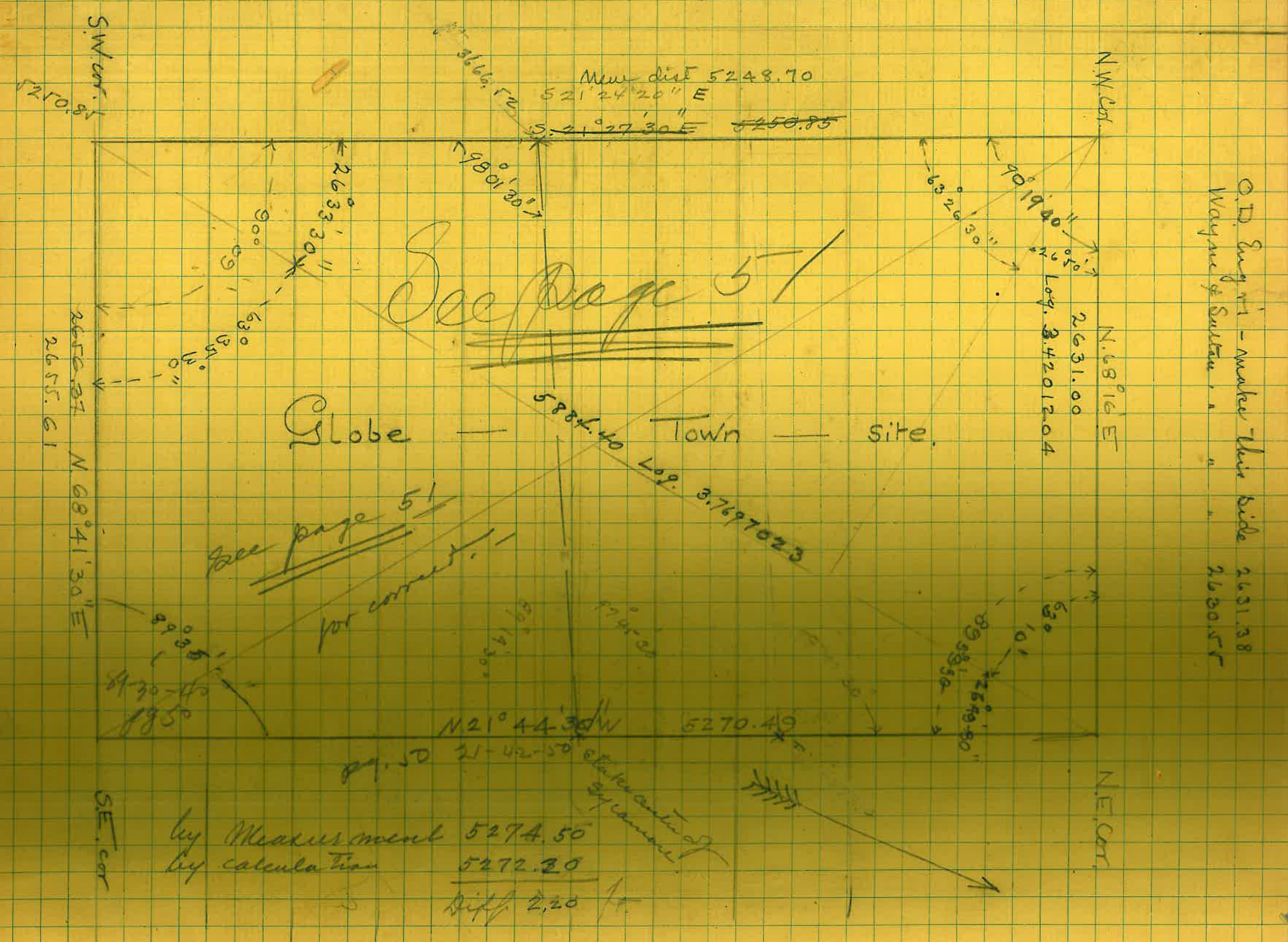
	+ N	- S	Total N	+ E	- W	Total E	
N.W. cor			+1190.30			-1535.51	✓
S.W. cor	S. 21° 27' 30" E 5250.85	4886.85	-3696.55	1920.90		+385.39	✓
S.E. cor	N. 68° 41' 30" E 2656.37	965.25	-2731.30	2474.77		+2860.16	✓
N.E. cor	N. 21° 44' W 5270.49	4395.86	+2164.56		1951.60	+908.56	✓
N.W. cor	S. 68° 16' W 2631.00	974.22	+1190.34		2444.00	-1535.44	✓

See page 51

S. 20° 42' E 927.70	S. 24° 54' E 1528.4	S. 22° 30' E 832.91	S. 19° 06' 30" E 247.00
9.9710178	9.9576284	9.9656153	9.5828397
2.9674076	2.1822370	2.9205981	2.3926970
2.9384254	2.1408654	2.8862134	2.3680835
867.81	138.63	769.51	233.39
327.92	64.35	318.74	80.86
S. 22° 19' 30" E 378.61	S. 21° 04' E 1127.46	S. 20° 01' E 654.59	
9.9661624	9.9699574	9.9729398	9.5343986
2.5781921	3.0521011	2.8159694	2.8159694
2.5443545	3.0220785	2.7889092	2.3503680
350.23	1052.15	615.04	224.06
143.82	405.27		
S. 21° 27' 30" E 5250.85	N. 68° 41' 30" E 2656.37	N. 21° 44' W 5270.49	
9.9688022	9.5603691	9.9679771	9.5685387
3.7202296	3.4242886	3.7218510	3.7218510
3.6890318	2.9846577	3.6898281	3.2903897
4886.85	965.25	4895.85	1951.60
1920.90	2474.77		
S. 68° 16' W 2631.00			
9.5685387	9.9679771		
3.4201208	3.4201208		
2.9886595	3.3880979		
974.22	2444.00		

(50)





See page 51

Globe ——— Town ——— Site

See page 51  
for correct

by Measurement 5274.50  
by calculation 5272.30  
Diff. 2.20 ft

O.D. Burgin - makes their bid 2631.38  
Wayne & Sustain " " 2630.55

9  
2  
6  
901  
263  
1165  
3.7  
9.6  
3.3  
9.9



$90^{\circ} 08' 60''$   
 $26^{\circ} 33' 30''$   
 $63^{\circ} 35' 30''$   
 $90^{\circ} 16' 30''$   
 $26^{\circ} 33' 30''$   
 $116^{\circ} 50' 00''$   
 $3.7202296$   
 $9.6504131$   
 $3.3706427$   
 $9.9505223$   
 $3.4201204$

$179^{\circ} 60' 00''$   
 $118^{\circ} 50'$   
 $63^{\circ} 10'$   
 $26^{\circ} 33' 30''$   
 $63^{\circ} 10' : 26^{\circ} 33' 30'' = 5250.85' : X = 26574.84$   
 $= 2631.00$   
 $89^{\circ} 60'$   
 $62^{\circ} 10'$   
 $27^{\circ} 50'$   
 $2631.00 = \text{length of N. line}$

$89^{\circ} 59' 60''$   
 $26^{\circ} 33' 30''$   
 $63^{\circ} 26' 30''$   
 $89^{\circ} 59' 60''$   
 $63^{\circ} 26' 30''$   
 $26.150$

$90^{\circ} 16' 30''$   
 $90.$   
 $90.00$   
 $270^{\circ} 25' 30''$   
 $359^{\circ} 59' 60''$   
 $89^{\circ} 34' 30''$   
 $63^{\circ} 10' = 90^{\circ} 16' 30'' = 5250.85' : X$   
 $3.7202296$   
 $9.9999950$   
 $3.7202246$   
 $9.9505223$   
 $3.7897023$

$90^{\circ} : 63^{\circ} 26' 30'' = 5250.85' : X$   
 $3.7202296$   
 $9.9515704$   
 $3.6718000$   
 $469678$   
 $118762$   
 $588440$   
 $90^{\circ} : 26^{\circ} 50' = 3.4201204 : X$   
 $9.6545584$   
 $3.0746788$   
 $118762$

$89^{\circ} 34' 30'' : 63^{\circ} 35' 30'' = 5884.40 : X$   
 $89^{\circ} 34' 30'' : 26^{\circ} 50' = 5884.40 : X$

$3.7697023$   
 $9.9121369$   
 $3.7218392$   
 $9.9999881$   
 $3.7218511$   
 $5270.49$   
 $3.7697023$   
 $9.6545584$   
 $3.4242607$   
 $9.9999881$   
 $3.4242726$   
 $608$   
 $118$   
 $2656.37$



City Summit lines, Continued from Page 13.

13

Pt.	Course	Dist	+ N	- S	Total N	+ E	- W	Total E	Remarks.
One mile					-3485.40			-1338.00	Corner One mile S <sup>1</sup> from N.W. cor.
Stone	N. 66° 00' E	1530.00	622.31		-2863.09	1397.75		+ 59.75	
#	S. 21° 27' 30" E	892.18		830.34	-3693.43	326.38		+ 386.13	S.W. cor Globe Township
SW. cor	S. 21° 27' 30" E	1480.00		1377.41	-5070.84	541.42		+ 927.55	S.W. cor City Summit.
W. cor	N. 68° 32' 30" E	1208.44	442.08		-4628.76	1124.67		+ 2052.22	Angle Pt (see page 4 (Edwards))
S.E. cor.	N. 45° 33' 30" E	3999.00	2800.05		-1828.71	2855.15		+ 4907.37	Wk 11 - page 19

7398  
290

$\frac{N. 66^\circ E}{9.6093133} \quad \frac{1528.60}{9.9607802} \quad \frac{S. 21^\circ 27' 30" E 892.18}{9.9688022} \quad \frac{S. 21^\circ 27' 30" E 1480.00}{9.5632728} \quad \frac{N. 68^\circ 32' 30" E 1208.44}{9.5632728} \quad \frac{N. 45^\circ 33' 30" E 3999.00}{9.9688022}$



7398  
290

N 66° E 1528.60	
9.6093133	9.9607302
3.1822989	3.1842939
<u>2.7936072</u>	<u>3.1450241</u>
621.73	1396.45
N 45° 33' 30" E 1425.00	

9.8452114	9.8536761
3.1538149	3.1538149
<u>2.9990203</u>	<u>3.0074970</u>
997.76	1017.40

N 66° E 1530.00	
9.6093133	9.9607302
3.1846914	3.1846914
<u>2.7940047</u>	<u>3.1444216</u>
622.31	1397.75

S 21° 27' 30" E 892.18	
9.9688022	9.5632728
2.9504525	2.9504525
<u>2.9192547</u>	<u>2.5137253</u>
830.34	626.38

692.15	
9.9688022	9.5632728
2.8402092	2.8402092
<u>2.8090024</u>	<u>2.8034780</u>
644.17	253.21

S 21° 27' 30" E 1480.22	
9.9688022	9.5632728
3.1762617	3.1702617
<u>3.1390639</u>	<u>2.7335346</u>
1377.4	521.42

N 68° 32' 30" E 1208.44	
9.9688022	9.9688022
3.0822252	3.0822252
<u>2.6454980</u>	<u>3.0510274</u>
442.08	1124.67

9.8452114	9.8536761
3.6019514	3.6019514
<u>3.4471628</u>	<u>3.4556275</u>
2800.05	2855.15

OK. P/B

140

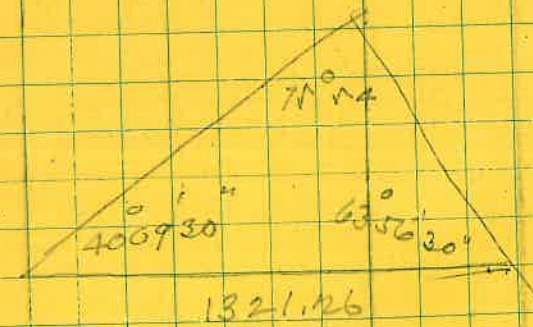


Point along S. line Globe Taconite. & S.E. corner.

pts	Dist	Course	+ N	- S	Total N	+ E	- W	Total W	Remarks
01									
Corner					-4628.76			-2052.22	
pt.	975.39	N 45° 33' 30" E	682.95		-3945.81	696.39		+2748.61	Page 39 - Book 11 - page 71
S.E. cor.	1223.82	N 5° 24' E	1218.41		-2727.40	115.72		+2863.78	
					2731.30			-2860.16	

75.5' : 60° 53' 30" = 1321.26 : X





6356.30  
 4009.30  
 -----  
 104.06  
 179.60  
 -----  
 75.54

$71^{\circ} 14' : 6356.30'' = 1321.26 : X$

3.1209883  
 9.9134443  
 -----  
 3.0744326  
 9.9867144  
 -----  
 3.0877182 -  
 1223.82

$N 4^{\circ} 33' 30'' E 975.39$   
 $N, 5^{\circ} 24' E 1223.82$   
 9.8452114    9.8536761    9.9980683    8.9736280  
 -----  
 2.9891783    2.9891783    3.0877182    3.0877182  
 -----  
 2.8343897    2.8428544    3.0817865    2.0613462  
 -----  
 682.70    696.39    1218.41    115.17

112



Location of Slaughter House in reference to City Limits Oct. 1911

13

pts	Course	Dist	+ N	- S	Total N	+ E	- W	Total E	Remarks
City Limits									
S.W. cor.					-5070.84			+927.55	} See page 39
angle point					-4628.76			+2052.22	
Spike in ?									
R.R. track					-3631.00			+3069.62	
1 <sup>st</sup>	S. 54° 50' 30" E	1560.0		898.30	-4529.30	1275.40		+4345.02	
2 <sup>nd</sup>	S. 48° 27' 30" E	770.0		510.64	-5039.94	576.32		+4921.34	
* 3 <sup>rd</sup>	S. 48° 29' 30" E	570.0		377.75	-5417.69	424.85		+5348.19	
4 <sup>th</sup>	S. 48° 15' 30" E	1584.0		109.520	-6512.89	1144.40		+6492.59	
5 <sup>th</sup>	S. 56° 42' E	3150.0		172.945	-8242.34	2632.80		+9125.39	
6 <sup>th</sup>	S. 69° 50' E	560.0		193.06	-8435.40	520.67		+9651.06	
7 <sup>th</sup>	N. 86° 45' E	1040.0	58.96		-8376.44	1038.30		+10689.36	
8 <sup>th</sup>	N. 47° 29' E	962.37	654.49		-7721.95	-705.55		+11394.91	West gavel of Slaughter House
					GA			GA	
3 <sup>rd</sup> *					-5417.69			+5348.19	
Sl. House	S. 5° 14' 30" E	5600.75		1077.30	-10995.02	511.66		+5859.85	

2461

S. 54° 50' 30" E 1560.0      S. 48° 27' 30" E 770      S. 48° 29' 30" E 570



S. 54°50'30" E 1580

9.7603003	9.9125217
3.1931246	3.1931246 ✓
2.9534249 ✓	3.1056463 ✓
898.30	1275.40

S. 48°27'30" E 770

9.8216213	9.8741765
2.8864907 ✓	2.8864907 ✓
2.7081120 ✓	2.7606672 ✓
510.64 ✓	576.32 ✓

S. 48°29'30" E 570

9.8218360	9.8744003
2.7558749	2.7558749 ✓
2.5772109	2.6302752 ✓
377.75 ✓	426.85 ✓

S 46° 15' 30" E 1584.0

9.8397344	9.8588165 ✓
3.1997552 ✓	3.1997552 ✓
3.0394896 ✓	3.0585717 ✓
1095.20	1144.40

S. 56°42' E 3150.0

9.7395904	9.9221062
3.4983106 ✓	3.4983106 ✓
3.2379010 ✓	3.4204168 ✓
1729.45	2632.80

S. 69° 50' E 560

9.5375070	9.9725239 ✓
2.7481880	2.7481880 ✓
2.2856950	2.7207119
193.06	525.67

N. 86° 45' E 1040.0

8.7535278	9.9993009 ✓
3.0170333 ✓	3.0170333 ✓
1.7705611	3.0163342
58.96	1038.30

N. 47° 09' E 962.37

9.8325609	9.8651849 ✓
2.9833421 ✓	2.9833421 ✓
2.8109030	2.8485270
654.49	905.55

S. 5° 14' 30" E 5600.75

9.9981801	8.9607408 ✓
3.7482461 ✓	3.7482461 ✓
3.7464262	2.7089869
5577.33	511.66

O.H. 11/3



# Location of Points along S. Boundary line

Point	Course	Dist	+N	-S	Total N	+E	-W	Total E	Remarks
Corner					-4628.76			+2052.22	Angle pt.
1425.00 Spike	N. 45° 33' 30" E	1425.00	997.76		-3631.00	1017.40		+3069.62	in railroad tracks - on West face Warehouse
E. side Street									abt E side of street
1541.25									
1795.									
2052.40	N. 45° 33' 30" E	627.40	439.29		-3003.60	447.94		+3517.56	spike -
Street fence cor.	N. 53° 01' 30" W	250.90	150.91		-2752.70		200.44	+3317.12	
2052.40					-3003.60			+3517.56	
3499.00	N. 45° 33' 30" E	1446.6			-2178.81	1032.83		+4550.39	
See cor	S. 84° 06' 30" E	84.15		8.64	-2187.45	+83.71		+4634.10	S.E. cor. Sec. 36 -
00+00					-4628.76			+2052.22	angle pt.
(3999.00)	(N. 45° 33' 30" E)	(3999.00)	(2800.05)		(-1828.71)	(2855.15)		(+4907.37)	S.E. cor. City Corporation
3994.36	N. 45° 33' 30" E	3994.36			-1840.09			+4912.04	collection All below
0 1 4									
	N. 45° 33' 30" E	1425.00				N. 45° 33' 30" E 627.40			N. 53° 01' 30" W - 250.90
	9.8452114	9.8536761			9.8452114	9.8536761		9.7792114	9.9024913
	3.1538149	3.1538149			2.7975445	2.7975445		2.3995007	2.3995007
	2.9990263	3.0074910			2.6427559	2.6512206		2.1787121	2.3019920
	997.76	1017.40			439.29	447.94		150.91	200.44
	N. 45° 33' 30" E	1446.6				S. 84° 06' 30" E 84.15			N. 45° 33' 30" E - 3999.00
	9.8452114	9.8536761			9.0113499	9.9976999		9.8452114	9.8536761
	3.1603485	3.1603485			1.9250541	1.9250541		3.6019514	3.6019514
	3.0055599	3.0140246			0.9364040	0.9227549		3.4471628	3.4556275
	1012.90	1032.83			8.64	83.71		2800.05	2855.15

+ N - S                      + E - W



+ N - S + E - W

Pt above

Old corner S. 22° 17' 30" E 12.30

-1828.71 +4907.37  
-11.38 -1840.09 4.67 4912.04

Van Vagnon for City, Minn. mit or 1140. -

6166.90 N 22° 17' 30" W

5705.80

-1828.71 +4907.37  
+3377.09 -2339.15 2568.22

+ 896.57 S. 67° 42' 30" W

340.09 3537.00 -829.57 1738.65  
(432.43) (3444.66) (1054.50) +1513.42 (Leave pt.)

+ (1140.00)

360.00 S 29° 00' 30" W

-313.33 3223.67 -177.27 1561.38

+ 687.70 S. 24° 26' W

626.11 2597.56 -284.46 1276.92

+ 565.90 S 40° 30' W

430.31 2167.25 -367.52 909.40

Should be 2164.56 N. x 908.56 E

9.9662661 9.5790076  
1.0899051 1.0899051  
1.0561712 0.6689127  
11.38 4.67

N. 22° 17' 30" W 6179.00

9.9662661 9.5790076  
3.7900528 3.7900528  
3.7563189 3.3690604  
5705.80 2339.15

S. 67° 42' 30" W 896.57

9.5790076 9.9662661  
2.9525842 2.9525842  
2.5315918 2.9188503  
340.09 829.57

S. 29° 00' 30" W 360.00

9.9396968 9.6923388  
2.5563025 2.5563025  
2.4959993 2.2486413  
313.33 177.27

S. 24° 26' W 687.70

9.9592528 9.6166164  
2.8373990 2.8373990  
2.7966518 2.4540154  
626.11 284.46

S. 40° 30' W 565.90

9.8810455 9.8125444  
2.7527397 2.7527397  
2.6337852 2.5652841  
430.31 367.52

N. 66° E 5280

3.7226339 3.7226339  
9.6093133 9.9607302  
3.3319472 3.6833641  
2147.55 4823.50

NW cor =

+1337.97

-3485.55

NE cor N 66° E 5280. 2147.55

+3483.52 4823.50

+1337.95

See page 5



# Points along E City limit

131

	+ N	- S	+ E	- W	
3999.00			-1828.71		+4907.37
pt. N 22° 17' 30" W	950.79	879.73	-948.98	360.66	+4546.71
stone N 45° 42' 30" E	124.6	87.01	-861.97	89.19	+4635.90
3999.00			-1828.71		+4907.37
1827.00	N 22° 17' 30" W	1827.00	-138.31	693.02	+4214.43
q cor.	N 35° 25' E	733.90	+459.79	425.31	+4639.64
3999.00			-1828.71		+4907.37
4107.47	N 22° 17' 30" W	4107.47	+1971.79	1558.10	+3349.27
2 x 2 stake	S 79° 14' 30" W	217.00	40.51	+1931.28	213.18

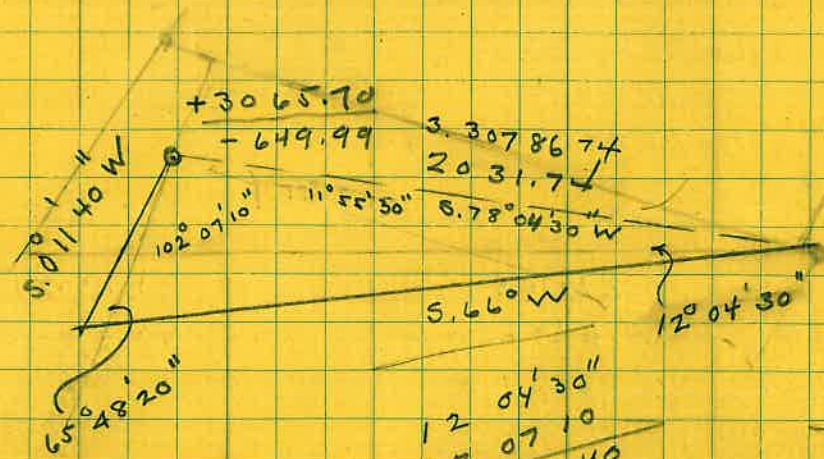
See page 45 -  
 B. 11 - p. 61  
 E cor. Book 11 - p. 61 - (Keggin + Barrett)  
 Book 11 - page 62

N 22° 17' 30" W 950.79		N 45° 42' 30" E 124.60		N 22° 17' 30" W 1827.00	
9.9662661	9.5790076	9.8440490	9.8547882	9.9662661	9.5790076
2.9780846	2.9780846	2.0955180	2.0955180	3.2617385	3.2617385
2.9443507	2.5570922	1.9395670	1.9503062	3.2280046	2.8407461
879.73	360.66	87.01	89.19	1690.40	693.02
N 35° 25' E 733.90		N 22° 17' 30" W 4107.47		S 79° 14' 30" W 217.0	
9.9111359	9.7630671	9.9662661	9.5790076	9.2710674	9.9922986
2.8656369	2.8656369	3.6135744	3.6135744	2.3364597	2.3364597
2.7767128	2.6187040	3.5798405	3.1925820	1.6071271	2.3287583
598.10	425.31	3800.50	1558.10	40.51	213.18

N.E. cor. over City limit = N 34° 85' 52" and E 1337.95



N.E. cor orig City limit. = N. 3485.527 and E 1337.95



3485.52	+ 1337.95
3065.70	- 649.99
<u>419.82</u>	<u>1987.94</u>

+ 3485.52	
+ 1337.95	
2.6230631	
3.2983945	
<u>9.3246686</u>	= 11.5530
2.6230631	
9.3151957	
<u>3.3078674</u>	
85.96	
78	2031.74

S 24° E
90
<u>S 66 W</u>
11 55 30
S 77.55'30 W

S 0° 11' 40 W
102 07 10
<u>101 55 30</u>
199 60

12 04 30
102 07 10
<u>114 11 60</u>
179 59 60
65 48 20

0° 11' 40
11 55 30
90
<u>102 07 10</u>

N 79 04 30 E
89 60
11 55 30
<u>78 04 30</u>

65° 48' 20" : 12° 04' 30" =

3.3078674
9.3205449
<u>2.6284123</u>
9.9600710
<u>2.6683413</u>
465.95

65° 48' 20" 102° 07' 10" =

3.3078674
9.9902110
<u>3.2980784</u>
9.9600710
<u>3.3380074</u>
= 2177.70

21	
+ 3877.09	+ 2568.22
+ 3485.52	+ 1337.95
<u>391.57</u>	<u>1230.27</u>

2.5927983	89 59 60
3.0900110	17 39 10
<u>9.5027873</u>	<u>7220.50</u>

2.5927983	
9.4817976	
<u>3.1110007</u>	1291.2

67



# Points along Broad Street South of Bridge

57

Pt.	Course	Dist.	N.	S.	Total N.	+E.	-W.	Total E.	Remarks
Wagon Pt.					72.59			- 29.28	See Page 5.
0+00	S 21° 42' E	79.20	00	00	00	00	00	00	
Push	S 21° 42' E	454.05		421.87	- 421.87	167.88		+ 167.88	Stake
Wigwag	S 26° 18' 30" E	236.09		211.64	- 633.51	104.63		272.51	"
Cedar	S 21° 47' 30" E	313.81		291.38	- 924.89	116.50		389.01	"
Oak	S 21° 44' 30" E	326.63		303.39	- 1228.28	120.99		510.00	"
Sycamore	S 21° 44' 30" E	324.88		301.77	- 1530.05	120.34		630.34	"
Waterwood	S 21° 44' 30" E	346.50		321.85	- 1851.91	128.35		758.69	"
Angle pt.	S 41° 32' 30" E	300.10		224.62	- 2076.57	199.01		957.70	"
Stump	S 52° 44' 30" E	152.50		923.73	- 3000.30	1214.40		2172.10	to stone at S. terminite line

79.20  
454.05  
533.25

Measurements and angles by J.M.

S 21° 42' E 454.05	S 26° 18' 30" E 236.09	S 21° 47' 30" E 313.81
9.9680777	9.9525125	9.9678005
2.6571037	2.3730774	2.4966668
2.6251814	2.3255899	2.4644673
421.87	211.64	291.38
9.5679044	9.6466013	9.5696463
2.6671037	2.3730774	2.4966668
2.2250081	2.0196787	2.0663131
167.88	104.63	116.50
S 21° 44' 30" E 326.63	S 21° 44' 30" E 324.88	S 21° 44' 30" E 346.50
9.9679519	9.9679519	9.9679519
2.5140561	2.5117230	2.5397032
2.4820080	2.4796749	2.5076551
303.39	301.77	321.85
120.99	120.34	128.35
S 41° 32' 30" - 300.1	S 52° 44' 30" E 152.50	
9.8741765	9.7820494	
2.4772660	3.1834976	
2.3514425	2.9658470	
224.62	923.73	
199.01	1214.40	

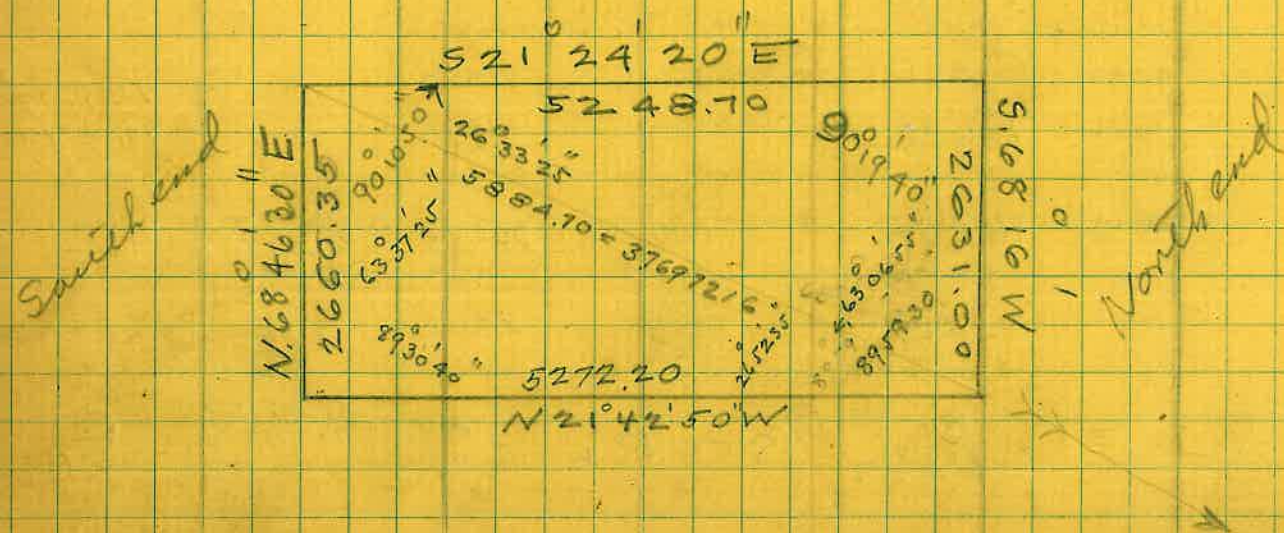
Re Survey of Globe Township based on measurements along Broad Street.



# Re Survey of Globe Township based on measurements along Broad Street. -

		+ N	- S	Total N	+ E	- W	Total E
N.W. cor.				+ 1190.30 ✓			- 1535.51 ✓
N.E. cor.	N 68° 16' E	2631.00	974.22	+ 2164.52	2444.00		+ 908.49
pt. on s. } Township line }				- 3000.30			+ 2172.10 <i>Stone in Broad Street</i>
S.W. cor.	S. 68° 46' 30" W	1922.40	695.97	- 3696.27		1792.00	+ 380.10
S.E. cor.	N 68° 46' 30" E	2650.35	960.58	- 2735.69	2473.30		+ 2853.40

N 68° 16' E	2631.00	S. 68° 46' 30" W.	1922.40	2653.30	
9.5685387	9.9679771	9.5587462	9.9694932	9.5587462	9.9694932
3.4201208	3.4201208	3.2838438	3.2838438	3.4237844	3.4237864
2.9886595	3.3880979	2.8425900	3.2533370	2.9825326	3.3932796
974.22	2444.00	695.97	1792.00	960.58	2473.30



21/12

51



# Street intersections based on Broad Street location.

Pts	Course	Dist	+N	-S	Total N	+E	-W	Total E	Remarks
Merquite					-633.51			272.51	
Hill	N68°00'E	367.30	137.60		-495.91	340.55		613.06	
Cedar Hill					-924.89			389.01	
Oak Hill					-1228.28			510.00	
Sycamore Hill					-1530.05			630.34	
Walden Hill	N67°17'30"E	367.00	141.68		-1851.95	338.55		758.69	



N68.00°E 367.30		N67°15'30"E 367.00		9.9680358	9.5681688
9.5735754	9.9671659	9.5872358	9.9648521	3.3709311	3.3709311
2.5650209	2.5650209	2.5646661	2.5646661	3.3389669	2.9390999
2.1385963	2.5321868	2.1519019	2.5295182	2.18256	869.16
137.60	340.55	141.87	338.47		

## Center of Merquite at E. line

N.E. cor			2164.52		908.49	
Globe T.S.	S21°42'50"E	2349.24	2182.56	-18.04	869.16	1777.65
						center of Merquite

## Street intersection in Globe Township

N	S	E	-W
		+ 2164.52	+ 908.49



Street intersection in Globe Township

	N	S	E	W
NE cor.		+ 2164.52		+ 908.49
North and Hill	S. 68° 16' W 1299.50	- 481.19	1683.33	1207.13 - 298.64

S. 68° 16' W 1299.50	
9,568,5387	9,967,9771
<u>3,113,7763</u>	<u>3,113,7763</u>
2,682,3150	3,081,7534
481.19	1207.13

W



Location of Center of Streets on E line of Globe Township.

Point	Course	Dist	+N	-S	TMN	+E	-W	TM E	
N.E. Cor					2164.52			908.49	See page 41
Ch. 11st	S 21° 42' 50" E	250		-232.3	2141.22	92.6		917.75	
Mesa	"	307.62		-285.79	1878.73	113.81		1022.80	
Mojave	"	595.25		-553.05	1611.51	220.23		1128.72	
Yuma	"	880.43		-917.76	1246.76	365.48		1273.97	
Tonto	"	1165.61		-1082.90	1081.62	431.24		1339.73	
Sa pache	"	1450.79		-1347.65	816.87	536.72		1445.21	
Kline	"	1735.97		-1612.80	551.72	642.27		1550.76	
Push	"	2096.20		-1947.45	217.07	775.54		1684.03	
mesquite	"	2349.26		-2182.60	-18.08	869.18		1777.67	
Cedar	"	2661.74		-2472.90	-308.38	984.75		1893.24	
Oak	"	2989.01		-2776.90	-612.38	1105.85		2014.34	
Sycamore	"	3308.04		-3073.30	-908.78	1223.85		2132.34	
Cottonwood	"	3657.64		-3398.10	-1233.58	1353.20		2261.69	
Maple	"	4125.64		-3878.75	-1714.23	1544.65		2453.14	
Ash	"	4655.44		-4325.10	-2160.58	1722.35		2630.84	
S.E. Cor		5242.40		-4885.1	-2721.54	1448.5		2857.04	See page 51.
					2735.69			2853.40	

3477.64

47040  
47040  
47040

S 21° 42' 50" E

S 21° 44' 30" E 250      9.9680358      9.5681688  
 S 21° 44' 30" E 307.62      9.9680358      9.5681688  
 S 21° 44' 30" E 595.25      9.9680358      9.5681688



S 21° 42' 30" E

S 21° 44' 30" E 2500  
 9.9680358    9.5681688  
 1.3979400 ✓    1.3979400 ✓  
 1.8659758    0.9661088  
 23.23    9.25

S 21° 44' 30" E 307.62  
 9.9680358    9.5681688  
 2.4880146    2.4880146  
 2.4560504    2.0561834  
 285.79    113.81

S 21° 44' 30" E 59525  
 9.9680358    9.5681688  
 2.7746994    2.7746994  
 2.7427352    2.3428682  
 553.01    220.23

S 21° 44' 30" E 88043  
 9.9680358    9.5681688  
 2.9946948    2.9946948  
 2.9627306    2.5628636  
 917.76    365.48

S 21° 44' 30" E 116561 ✓  
 9.9680358    9.5681688  
 3.0665495    3.0665495  
 3.0345853    2.6347183  
 1082.90    431.24

S 21° 44' 30" E 145079 ✓  
 9.9680358    9.5681688  
 3.1615776    3.1615776  
 3.1296134    2.7297464  
 1347.61    536.72

S 21° 44' 30" E 173597 ✓  
 9.9680358    9.5681688  
 3.2395490    3.2395490  
 3.2075848    2.8077178  
 1612.80    642.27

S 21° 44' 30" E 209620 ✓  
 9.9680358    9.5681688  
 3.3214327    3.3214327  
 3.2894685    2.8896015  
 1947.45    775.54

S 21° 44' 30" E 234926 ✓  
 9.9680358    9.5681688  
 3.3709385    3.3709385  
 3.3389743    2.9391073  
 2182.60    869.18

S 21° 44' 30" E 266174  
 9.9680358    9.5681688  
 3.4251591    3.4251591  
 3.3931949    2.9933279  
 2472.90    984.75

S 21° 44' 30" E 2989.01  
 9.9680358    9.5681688  
 3.4755259    3.4755259  
 3.4435617    3.0436947  
 2776.90    1105.85

S 21° 44' 30" E 3308.04  
 9.9680358    9.5681688  
 3.5195655    3.5195655  
 3.4876013    3.0877343  
 3073.30    1223.85

S 21° 44' 30" E 3657.64  
 9.9680358    9.5681688  
 3.5631962    3.5631962  
 3.5312320    3.1313650  
 3398.10    1353.20

S 21° 44' 30" E 4175.04  
 9.9680358    9.5681688  
 3.6206565    3.6206565  
 3.5886923    3.1888253  
 3878.75    1544.65

S 21° 44' 30" E 4655.44 ✓  
 9.9680358    9.5681688  
 3.6679570    3.6679570  
 3.6359928    3.2361258  
 4325.10    1722.35

S 21° 44' 30" E 5272.40 ✓  
 9.9680358    9.5681688



Location of Hill Street in reference with intersection at Cottonwood and Townsite line.

pt	Course	Dist	+ N	- S	Total N	+ E	- W	Total E
SE. cor. T. Site					-2735.69			+2853.40
Hill st. pt.	S. 68° 46' 30" W	286.12		103.58	-2839.27		266.71	+2586.69
Cottonwood Hill					-1710.27			+1097.24
					1129.00			1489.45
	9.5587462		9.9694932		3.0526939	Sum	3.0526939	9.7810844
	2.4565482		2.4565482		3.1730259			3.2716095
	2.0152944		2.4260414		9.8796680			= 1869
	103.58		266.71		6532	37° 09' 42"		
								8 37° 09' 42" E
								1467 17 30 E
								104 27 12
								179 59 60
								75 32 48

S. Line and  
Broad St. Inter.

SE. cor. Globe  
Townsite.

					-3000.30			+2172.10
					-2735.69			+2853.40
					264.61			681.30
	2.4226063		2.4226063		730.91			
	2.8333384		9.5587462		448.78			
	9.5892679		2.8638601		282.13			

Dist. Broad St. intersec. to SE. Townsite corner  
 " Hill St. " " SE. Townsite corner.

S. Line and  
Broad St. Inter.

Hill st pt  
S. Townsite  
Cottonwood Hill

					-3000.30			+2172.10
					-2837.83	41834		+2590.44
					-1710.27			+1097.24
					1127.56			1493.20
	9.5587462		9.9694932		3.0526939			9.7810844
	2.6520335		2.4565482		3.1730259			3.2716095
	2.2107797		2.6215267		9.8796680			= 1871.20
	162.47		418.34					

Hill St. Calculated

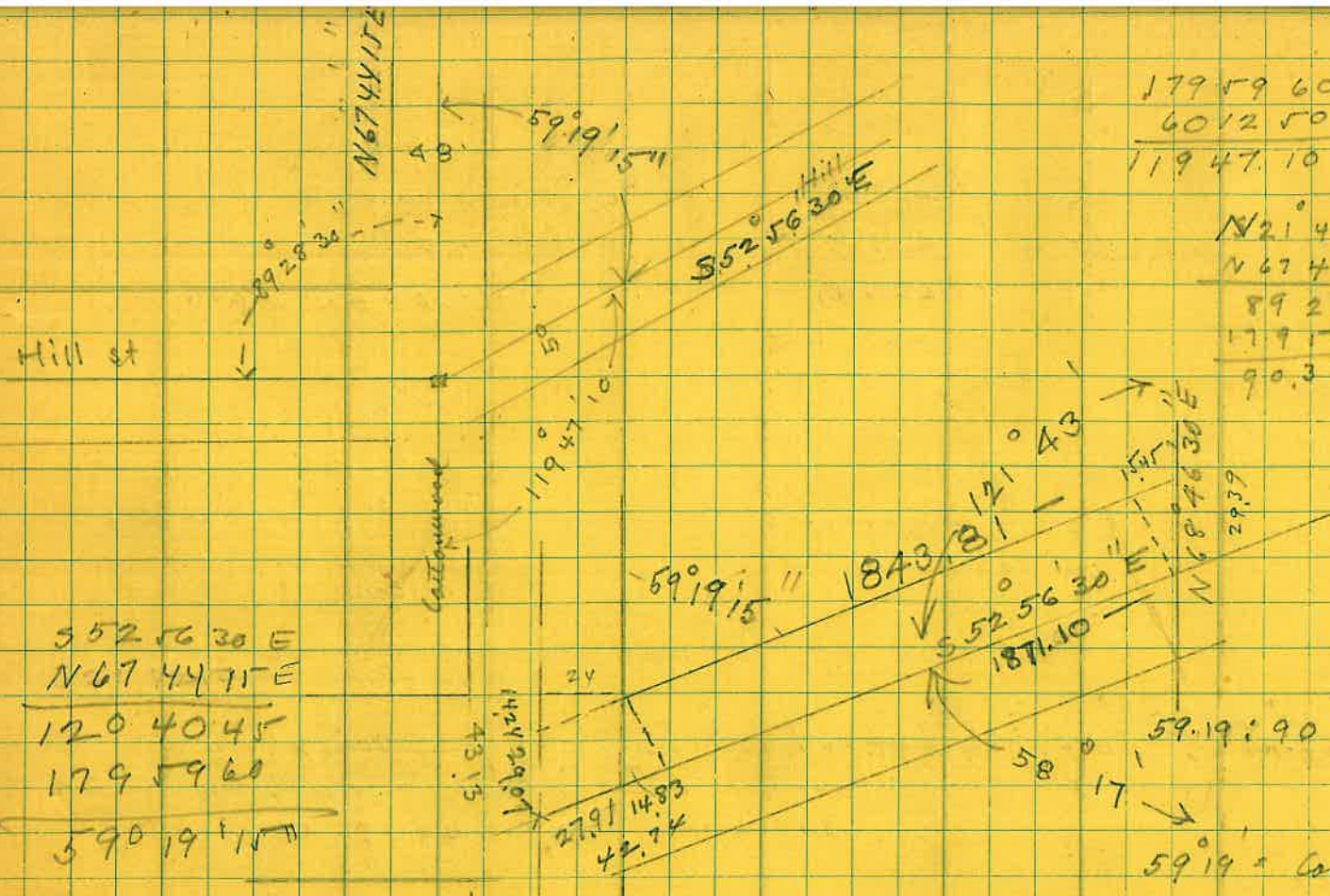
N 67° 44' 15" E

59° 19' 15"

179 59 60  
60 12 50  
119 47 10

N 67° 44' 15" E  
N 52° 29' 40" W  
120 73 55





179 59 60  
 60 12 50  
 119 47.10

N 67° 44' 15" E  
 N 52° 29' 40" W  
 120 83 55  
 179 59 60  
 59 46 05"

N 21° 44' 10" W  
 N 67° 44' 15" E  
 89 28 25  
 179 59 60  
 90 31 25

552 56 30 E  
 N 67 44 15 E  
 120 40 45  
 179 59 60  
 590 19 15 W

9.7800492  
 3.2720906  
 3.0521398  
 1127.55  
 1710.27  
 2837.82 ✓

9.9020151  
 3.2720906  
 3.1741057  
 1493.05  
 1097.24  
 2590.29 ✓

2791  
 1483  
 42.74

2791  
 1483  
 42.74

1.3979400  
 9.9344988  
 1.4634412 29.07

1.3979400  
 9.7078194  
 1.1057594  
 9.9344988  
 1.1712606 14.83

1.3802112  
 9.9344988  
 1.4457124 27.91

1871.10  
 42.74  
 1828.36  
 15.45  
 1843.81

$58^{\circ} 17' = 90 = 25 : X$

$59^{\circ} 19' : 90 = 25 : X$

$59^{\circ} 19' : \text{Cos } 59^{\circ} 19' = 24 : X$

$58^{\circ} 17' = \text{Cos } 58^{\circ} 17' = 25 : X$

1.3979400  
 9.9297551  
 1.4681849 29.39

1.3979400  
 9.7207538  
 1.1186938  
 9.9297551  
 1.1889387

1.3802112  
 9.7078194  
 1.0880306  
 9.9344988  
 1.1535318 14.24



E. side of Hill St. South of Cottonwood.

Location of points along Hill St. South of Cottonwood.

St	Course Dist	+ N	- S	Total N	+ E	- W	Total E	Remarks
				-1710.27			+1097.24	Cottonwood & Hill
N.T.	N 67.44 15 E 29.07	11.06		-1699.26	2690		+1124.14	Pt. where Elm of Hill St. intersects Center line of Cottonwood Street.
	S 52.56 30 E							
	S 52.56 30 E 27.91		1682	-1716.08	22.27		+1146.41	S.E. cor. Hill and Cottonwood streets.
	" N E 514.02		309.76		410.20			Center of Netherland
	" " 601.48		362.53		480.07			" " Maple
	" " 1079.05		650.20		861.02			Deverest
	" " 1160.2		699.15		925.84			Ash -
	" " 1630.45		980.31		1298.15			High

514.02	601.48	1079.05	1630.45
2.7109800	2.7109800	2.7792934	2.7792934
9.7800492	9.9020151	9.7800492	9.9020151
2.4910292	2.6129951	2.5593426	2.6813085
1160.2	1630.45	3.2113125	3.2113125
3.0645238	3.0645238	9.7800492	9.9020151
9.7800492	9.9020151	2.9913617	3.1133276
2.8445730	2.9665389		

N 67.44 15 E 29.07	S 52.56 30 E 27.91	426.00
9.784730	9.9663567	9.7800492
		9.9020151
		2.6569698
		2.6569698



N 67 44 15 E 29.07		S 52 56 30 E 27.91		426.00	
9.5784730	9.7663567	9.7800492	9.9020151	9.7800492	9.9020151
1.4634450	1.4634450	1.4457598	1.4457598	2.6569698	2.6569698
<u>1.0419180</u>	<u>1.4298017</u>	<u>1.2258090</u>	<u>1.3477749</u>	<u>2.4370190</u>	<u>2.5589849</u>
11.01	2690	1682	22.27	273.54	362.23
9.7800492	9.9020151	9.7800492		9.9020151	9.7800492
2.7102020	2.7102020	2.7536443		2.7536443	2.7794450
<u>2.4902512</u>	<u>2.6122171</u>	<u>2.5336935</u>		<u>2.6556594</u>	<u>2.5594942</u>
309.21	409.46	341.74		452.54	362.66

9.7800492	9.9020151	9.7800492	9.9020151	9.7800492	9.9020151
2.8037984	2.8037984	2.7519562	2.7519562	2.7778544	2.7778544
<u>2.5838476</u>	<u>2.7058135</u>	<u>2.5320054</u>	<u>2.6539713</u>	<u>2.5579036</u>	<u>2.6798695</u>
383.57	567.94	340.41	450.79	361.33	478.48

9.7800492	9.9020151
2.8022879	2.8022879
<u>2.5823371</u>	<u>2.7043030</u>
382.24	506.18



Cottonwood Street E. of Hill

Course	Dist	+ N	- S.	Total N	+ E	- W	Total East.	
				-1710.27			+ 1097.24	Cottonwood & Hill -
1. Sutherland	N67°44'15"E	287.31	108.86	1601.41	265.69		1362.93	
2. Doremus	"	174.6	217.72	1492.55	531.77		1629.01	
3. High	"	861.92	326.58	1383.69	797.66		1894.90	
4. East	"	1149.23	435.44	1274.83	1063.55		2160.79	
5. Townline	"	1258.30	476.77	1233.50	1164.50		2261.74	

1/	2/	3/	4/	5/	6/
9.5785193	9.9663480	9.5785193	9.9663480	9.5785193	9.9663480
2.4583507	2.4583507	2.7593732	2.7593732	2.9354670	2.9354670
2.0368700	2.4246987	2.3378925	2.7257212	2.5139863	2.9018150
108.86	265.69	217.72	531.77	326.58	797.66
9.5785193	9.9663480	9.5785193	9.9663480		
3.0604070	3.0604070	3.0997842	3.0997842		
2.6389263	3.0267550	2.6788035	3.0661322		
435.44	1063.55	476.77	1164.50		



# Block 84 - Globe Town Site, -

Point	Course	Dist	Latitude		Total N.	Departure		Total E	Remarks
			+ N	- S		+ E	- W		
Intersec. Broad & Cedar					-924.89	✓		389.01	✓
1) N.E. Block corner	S. 31° 35' 30" W	61.60		52.47	-977.36	✓	32.27	356.74	✓
2) Intersec. Broad & Oak	S. 21° 44' 30" E	326.63	✓	303.39	-1228.28	✓	120.99	510.00	✓
3) S.E. Block corner	N. 75° 17' 30" W	61.30	15.56		-1212.72	✓	59.29	450.71	✓
4) Intersec. Pine & Oak	S. 68° 13' 30" W	300.25	✓	113.38	-1339.66	✓	278.83	231.17	✓
5) S.W. Block corner	N. 24° 46' 30" E	52.90	48.03		-1291.63	✓	22.17	253.34	✓
Intersec. Broad & Cedar					-924.89			389.01	
6) Intersec. Pine & Cedar	S. 67° 43' 30" W	303.50	✓	115.04	-1039.93	✓	280.85	108.16	✓
7) N.W. Block corner	S. 66° 37' 30" E	53.10		20.78	-1060.71	✓	48.86	157.02	✓

Handwritten calculations and summaries:

1) 9.9303392 ✓ 9.7192169 ✓ 2) 9.9679519 ✓ 9.5686972 ✓ 3) 9.4046603 ✓ 9.9855301 ✓  
 1.7895807 ✓ 1.7895807 ✓ 2.5140561 ✓ 2.5140561 ✓ 1.7874605 ✓ 1.7874605 ✓  
 1.7199199 ✓ 1.5087976 ✓ 2.4820080 ✓ 2.0827533 ✓ 1.1921208 ✓ 1.7729906 ✓  
 52.47 ✓ 32.27 ✓ 303.39 ✓ 120.99 ✓ 15.56 ✓ 59.29 ✓

4) 9.5693302 ✓ 9.9678510 ✓ 5) 9.9580669 ✓ 9.6222720 ✓ 6) 9.5786993 ✓ 9.9663179 ✓  
 2.4774830 ✓ 2.4774830 ✓ 1.7234557 ✓ 1.7234557 ✓ 2.4821587 ✓ 2.4821587 ✓  
 2.0468132 ✓ 2.4453340 ✓ 1.6815226 ✓ 1.3457277 ✓ 2.0608580 ✓ 2.4484766 ✓  
 111.38 ✓ 278.83 ✓ 48.03 ✓ 22.17 ✓ 115.04 ✓ 280.85 ✓

7) 9.5926213 ✓ 9.9638919 ✓  
 1.7250945 ✓ 1.7250945 ✓  
 1.3177158 ✓ 1.6889864 ✓  
 20.78 ✓ 48.86 ✓

1 to 3 -  
 -977.36 356.74  
 1212.72 450.71  
 235.36 93.97

3-5.  
 1291.63 253.34  
 1212.72 450.71  
 78.91 197.33

4-6)  
 1339.66 231.17  
 1039.93 108.16  
 299.73 123.01

5-7  
 1291.63 253.34  
 1060.71 157.02  
 230.92 96.32

1 to 7  
 1060.71 157.02  
 977.36 356.74  
 83.35 199.72  
 1 9209056 1.9209056  
 2 3004216 9.5856249  
 9 6204840 2.3352807  
 20403 21641

2.0899404  
 2.4796185  
 9.6105219  
 2.0899404  
 9.5769471  
 2.5129929  
 32583

1.9837165  
 2.3634615  
 9.6202550  
 1.9837165  
 9.5860283  
 2.3976882  
 249.98



Points along proposed retaining wall N of City bridge

	+ N	- S	Total N	+ E	- W	Total	
W. 112			+771.79			-597.03	No these figures are O.K.
cur of wall	S. 64° 42' E 78.70	33.63	738.16	71.15		-525.88	
angl pt	N 42° 28' W 49.91	36.85	775.01		33.72	-559.60	
angl pt	N 60° 27' W 113.70	56.08	831.09	✓	98.91	-658.51	✓
angl pt	N 68° 26' W 59.42	21.84	852.93		55.64	-714.15	
angl pt	N 76° 25' W 178.92	42.02	894.95		173.92	-888.07	
angl pt	N 86° 43' W 85.76	4.91	899.86		85.62	-913.69	curve of O.D. track
Handway	N. 20° 50' W 214.00	200.01	1099.87		7611	-1049.80	Same checks with previous work
thence	N 8° 01' W 553.5	548.09	1647.96		77.20	-1127.00	
thence	N 14° 19' E 72.2	69.96	1717.92	17.80		-1109.15	To connection with Hand of concrete wall under Green Saloon

S. 64° 42' E 78.70		N 42° 28' W 49.91		N. 60° 27' W 113.70	
9.6307917	9.9562081	9.8678623	9.8294075	9.6930080	9.9394821
1.8959747	1.8959747	1.6985355	1.6985355	2.0557605	2.0557605
1.5267664	1.8521828	1.5663978	1.5279430	1.7487685	1.9952426
33.63	71.15	36.85	33.72	56.08	-98.91
N. 68° 26' W 59.42		N. 76° 25' W 178.92		N 86° 43' W 85.76	
9.5653561	9.9684785	9.3708079	9.9876794	8.7579546	9.9992865
1.7739326	1.7769326	2.2526589	2.2526589	1.9332848	1.9332848
1.3392887	1.7454111	1.6234668	2.2403383	0.6912394	1.9325713
21.84	55.64	42.02	173.92	4.91	85.62
N. 20° 50' W 214.00		N. 8° 01' W 553.50		N 14° 19' E 72.2	
9.9706346	9.5510237	9.9957350	9.1444532	9.9862986	9.3931905
2.3304138	2.3304138	2.7431176	2.7431176	1.8585372	1.8585372
2.3010484	1.7814375	2.7388526	1.8875708	1.8448358	1.2517277
200.01	60.46	548.09	77.20	69.96	17.85



To establish E line of Broad Street between Bridge and Banker garden -

Course	Dist	+ N	- S	Total N	+ E	- W	Total E	
Man W24				78.59			- 29.28	
pt.	N24°17'W	78.94	71.76	145.35		32.46	- 61.74	pt on street line. -
pt.	S41°18'30"E	112.95	84.69	60.66	74.43		+ 12.69	only street corner bend in street.
Man Rv				771.79			- 597.03	
Theme	S. 73°04' E	86.50	25.19	746.60	82.75		- 514.28	E. angle pt. of Broad near Steam boundary
Theme	S. 34°14' E	209.00	165.35	581.25	112.51		- 401.77	S to angle pt. E side of Broad
"	" " "	226.50	187.26	393.99	127.42		- 274.35	(S.W. cor lot 28 -

N. 24°17'W	78.94	S. 41°18'30"E	112.95	S. 73°04' E	86.50	S. 34°14' E	200.00
9.9597676	9.641051	9.8757372	9.8196169	9.4642790	9.980765	9.9173760	9.7501723
1.8972974	1.8972971	2.052166	2.052166	1.9370161	1.9370161	2.3010300	2.3010300
1.8570650	1.5114022	1.9278538	1.8717335	1.4012951	1.9177666	2.2184060	2.0512023
71.96	32.46	84.69	74.43	25.19	82.75	165.35	112.51
						S. 34°14' E	226.50
						9.9173760	9.7501723
						2.3550682	2.3550682
						2.2724442	2.1052405
						187.26	127.42

Based on work done by  
 Wayne & Burton  
 see book 5 - page 52 -

36.31	426.5	36.31	- 90.11	1.5600262
	724.94			2.6299190
				8.9301072 = 4° 53' 02"
183	2.6299190			
19	9.9984205			
36.31	7.6314995			
	2.6283395			



Poroad Street Paints near City Bridge

Pts	Course	Dist	+ N	- S	Total N	+ E	- W	Total E	Remark
Mon A.	S26°46'W	74.90		66.87	73.59 6.72		33.73	-29.28 -63.01	corner of Winers Union Hall.
Mon A	N24°16'W	79.10	72.11		73.59 145.70		32.51	-29.28 -61.79	S.W. cor. Le Roy Postoffice.
Mon 3A	S16°49'E	64.40		61.65	273.92 212.27	18.63		-192.18 -173.55	N. cor. 2 <sup>nd</sup> St. near Bone
Mon 3A	S.60°45'E	44.80		21.89	273.92 252.03	39.09		-192.18 -153.09	cor. of 2 <sup>nd</sup> Bldg. N. side Bone at Poroad.
Mon B.	S.34°48'W	31.18		26.13	506.37 480.24		18.16	-381.20 -399.36	S.W. cor. Euclid & Poroad Street.

S.26°46'W - 74.90		N.24°16'W 79.10		S.16°49'E 64.40		S.60°45'E 44.80	
9.9507775	9.6535581	9.9598246	9.6138250	9.9810187	9.4613638	9.6889723	9.9407634
1.8744818	1.8744818	1.8981765	1.8981765	1.8088859	1.8088859	1.6512780	1.6512780
1.8252593	1.5280399	1.8580011	1.5120015	1.7899046	1.2702497	1.3402503	1.5920414
66.87	33.73	72.11	32.51	61.65	18.63	21.89	39.09

S.34°48'W 31.18	
9.9144221	9.7564182
1.5027002	1.5027002
1.4171223	1.2591184
26.13	18.16



NW 1/4 of SE 1/4 Sec. 26

	Course	Dist	+	-	Total N	+	-	Total E	Remarks
Old S.E. cor.					<del>868.49</del>			<del>1970.03</del>	Paddock SW. cor. North Globe Township page 148
S.E. cor.					- 896.90			- 1978.35	
1 Pt in E. side	N 0° 24' 10" E	432.30	432.3		- 464.60	3.04		- 1975.31	
2 Pt N-2	N 70° 10' W	259.9	88.18		- 376.42		244.48	- 2219.79	
3 Pt N-3	N 70° 10' W	228.1	77.39		- 299.03		214.57	- 2434.36	
4 Pt N-4	S. 71° 16' W	125.5		3050	- 329.53		121.74	- 2556.10	
					- 329.53			- 2556.10	
5	S 26° 21' E	260.90		233.8	- 563.33	115.8		- 2440.30	S.E. cor. mining claim.
6	S 26° 21' E	116.8		104.66	- 434.19	51.84		- 2504.26	Petro Ricardo pt. in arroyo
7	S 26° 21' E	104.9		94.00	- 423.53	46.65		- 2509.45	Sanin Jacolatti Pt. in arroyo.
8	S 26° 21' E	227.1		203.50	- 533.03	100.80		- 2455.30	Petro Ricardo on claim line
9	S 26° 21' E	15.0		13.44	- 342.97	6.66		- 2549.44	N.W. cor. Sanin Jacolatti.
10	S 44° 11' E	242.0		173.54	- 503.07	168.67		- 2387.43	Petro Ricardo & Eury Holguin in rear.
11	S 52° 13' E	307.8		188.58	- 518.11	243.27		- 2312.83	Eury Holguin & Brocha in rear.
					- 299.03			- 2434.36	
12	S 32° 20' W	48.0		40.56	- 339.59		25.67	- 2460.03	N.E. cor. Sanin Jacolatti
13	S 2° 40' W	23.4		23.38	- 322.41		1.09	- 2435.45	N.W. cor. Petro Ricardo.
14	S 62° 58' E	98.7		44.86	- 343.89	87.91		- 2346.45	Petro Ricardo & Eury Holguin on street
15	N 78° 40' W	63.5	12.48		- 286.55		62.26	- 2496.62	N.E. cor. Antonio Robla.
16	S 79° 50' W	92.5		16.33	- 315.36		91.05	- 2525.41	S.E. " " "
17	N 60° 17' W	171.6	85.06		- 213.97		149.03	- 2583.39	N.W. " " "
18	N 76° 49' W	179.10	40.89		- 258.14		174.38	- 2608.74	S.W. " " " on S. side street



1/	9.9999893 2.6357852 <u>2.6357852</u> 432.30	1.8469393 2.6357852 <u>0.4827245</u> 3.04	2/	9.5305650 2.4148063 <u>1.9453713</u> 88.18	9.9734435 2.4148063 <u>2.3882498</u> 244.48	3/	9.5305650 2.3581253 <u>1.8886903</u> 17.39	9.9734435 2.3581253 <u>2.3315688</u> 214.57	4/	9.3856969 2.0986437 <u>1.4843406</u> 30.50	9.9867778 2.0986437 <u>2.0854215</u> 121.74
----	--	--	----	---	--	----	---	--	----	---	--

5/	9.9523562 2.4164741 <u>2.3688303</u> 233.80	9.6472395 2.4164741 <u>2.0637136</u> 115.80	6/	9.9523562 2.0674428 <u>2.0197990</u> 104.66	9.6472395 2.0674428 <u>1.7146823</u> 51.84	7/	9.9523562 2.0207755 <u>1.9731317</u> 94.00	9.6472395 2.0207755 <u>1.6680150</u> 46.65	8/	9.9523562 2.3562171 <u>2.3085733</u> 203.50	9.6472395 2.3562171 <u>2.0034566</u> 100.80
----	--	--	----	--	---	----	---	---	----	--	--

9/	9.9523562 1.1760913 <u>1.1284475</u> 13.44	9.6472395 1.1760913 <u>0.8233308</u> 6.66	10/	9.8555878 2.3838154 <u>2.2394032</u> 173.54	9.8432057 2.3838154 <u>2.2270211</u> 168.67	11/	9.7872317 2.4882686 <u>2.2755003</u> 188.58	9.8978103 2.4882686 <u>2.3860789</u> 243.27	12/	9.9268314 1.6812412 <u>1.6080726</u> 40.56	9.7282271 1.6812412 <u>1.4094683</u> 25.67
----	---	--	-----	--	--	-----	--	--	-----	---	---

13/	9.9995295 1.3692159 <u>1.3687454</u> 23.38	8.6676893 1.3692159 <u>0.0369052</u> 1.09	14/	9.6575423 1.9943172 <u>1.6518595</u> 44.86	9.9497521 1.9943172 <u>1.9440693</u> 87.91	15/	9.2933993 1.8027737 <u>1.0961730</u> 12.48	9.9914478 1.8027737 <u>1.7942215</u> 62.26	16/	9.2467746 1.9661417 <u>1.2129163</u> 16.33	9.9931268 1.9661417 <u>1.992685</u> 91.05
-----	---	--	-----	---	---	-----	---	---	-----	---	--

17/	9.6952288 2.2345173 <u>1.9297461</u> 85.06	9.9387635 2.2345173 <u>2.1732808</u> 149.03	18/	9.3580637 2.2530956 <u>1.6111593</u> 40.89	9.9884008 2.2530956 <u>2.2414964</u> 174.38
-----	---	--	-----	---	--



N.W. 1/4 of SE 1/4 Sec. 26 Continued

				Total N		Total E	
				- 299.03		- 2434.36	
19	PL. N=3	N 51° 30' W	172.4	107.32	- 191.71	134.92	- 2569.28 Antonio Roble, SW. cor. (N. side of street)
20		N 56° 10' W	52.	28.95	- 270.08	43.19	- 2477.55 Bend in front line
21		N 20° 0' W	208.2	195.83	- 103.20	71.28	- 2505.64 N.W. cor. Antonio Roble
22		N 40° 50' E	152.4	115.31	- 183.72	99.65	- 2334.71 NE. cor. " "
23		N 47° 35' E	126.7	85.46	- 23.57	93.52	- 2340.84 Bend in E. line Robles lot. & N.W. cor. W.M. Ray's lot.
24		S. 79° 23' E	57.2		10.54	- 309.57	56.22 - 2378.14 Roble & Ray on street
	FA. N=2					- 376.42	- 2219.79
25		S. 88° 55' W	53.7		1.02	- 377.44	53.69 - 2273.48 Holguin & Brocka on street
26		N 58° 10' W	58.6	30.91	- 345.51	49.77	- 2269.56 Ray & J. Alexander, on street
27		N 11° 10' W	152.4	149.52	- 226.90	29.51	- 2249.30 " " " in rear
28		N 6° 10' W	13.0	12.93	- 363.49	1.39	- 2221.18 Alexander & Brocka on street
29		N 7° 12' E	127.5	126.50	- 249.92	15.98	- 2203.81 " " " in rear
30		N 42° 02' E	135.4	100.57	- 275.85	90.66	- 2129.13 Brocka & Alphonso Oliva in rear
31		S 74° 40' E	63.3		16.74	- 393.16	61.05 - 2158.74 Brocka & Oliva on street
32		N 32° 45' E	204.9	172.33	- 204.09	110.85	- 2108.94 N.W. cor. Margarito Martinez
33		N 61° 15' E	265.8	127.84	- 248.58	233.03	- 1986.76 NE " " "

19	20	21	22
9.7941496	9.8935444	9.7456828	9.9194237
2.2365373	2.2365373	1.7160033	1.7160033
		9.9729858	9.5340517
		2.3188977	2.3188977
			9.8788748
			2.1829850
			9.8154854
			2.1829850



19

9.7941496	9.8935444
2.2365373	2.2365373
<u>2.0306869</u>	<u>2.1300817</u>
107.32	134.92

20

9.7456828	9.9194237
1.7160033	1.7160033
<u>1.4616861</u>	<u>1.6314270</u>
28.95	43.19

21

9.9729858	9.5340517
2.3188977	2.3188977
<u>2.2918835</u>	<u>1.8529494</u>
195.83	71.28

22

9.8788748	9.8154854
2.1829850	2.1829850
<u>2.0618598</u>	<u>1.9984704</u>
115.31	99.65

23

9.8289930	9.8682088
2.1027766	2.1027766
<u>1.9317696</u>	<u>1.9709854</u>
85.46	93.52

24

9.2653775	9.9925013
1.7573960	1.7573960
<u>1.0227735</u>	<u>1.7498973</u>
10.54	56.22

25

8.2766136	9.9999224
1.7299743	1.7299743
<u>0.0065879</u>	<u>1.7298967</u>
1.02	53.69

26

9.7221814	9.9292073
1.7678976	1.7678976
<u>1.4900790</u>	<u>1.6970049</u>
30.91	49.77

27

9.9916991	9.2870480
2.1829850	2.1829850
<u>2.1746841</u>	<u>1.4700330</u>
149.52	29.51

28

9.9974797	9.0310890
1.1139434	1.1139434
<u>1.1114231</u>	<u>0.1450324</u>
12.93	1.09

29

9.9965619	9.0980662
2.1055102	2.1055102
<u>2.1020721</u>	<u>1.2035764</u>
126.50	15.98

30

9.8708458	9.8257913
2.1316187	2.1316187
<u>2.0024645</u>	<u>1.9574100</u>
100.57	90.66

31

9.4223176	9.9842589
1.8014037	1.8014037
<u>1.2237213</u>	<u>1.7856626</u>
16.74	61.05

32

9.9248161	9.7331768
2.3115420	2.3115420
<u>2.2363581</u>	<u>2.0447188</u>
172.33	110.85

33

9.6821349	9.9428643
2.4245550	2.4245550
<u>2.1066899</u>	<u>2.3674193</u>
127.84	233.03

77



N.W. 1/4 of SE 1/4 Sec 20 Continued

			+	-	Total N	+	-	Total E	
Pt 90°					- 464.60			- 1975.31	
34	N73°50'W	118.0	32.86		- 431.74		113.33	- 2088.64	Bend in Brockas front line
35	S.72°16'W	22.0		6.70	- 471.30		20.96	- 1996.27	Brockas on N. Globe Town line (approx)
36	S58°50'W	28		14.49	- 479.09		23.96	- 1999.27	D. Bertolio in N. Globe on Town line approx
37	S.19°50'W	194.6		183.07	- 647.67		66.02	- 2041.33	Bertolio & Brockas in rear,
38	N.50°48'W	36.4	23.01		- 441.59		28.21	- 2003.52	Oliva and D. Baina on street
39	N30°40'W	22	18.92		- 445.68		11.22	- 1986.53	S.W. cor. of lot 24 N. Globe (approx)
40	N41°50'W	126.3	125.85		- 338.75		10.64	- 1985.95	N.W. cor of lot 24 " " (approx) N.E. cor Oliva is 17 ft N. of 40
SE corner									
SE corner					- 896.90			- 1978.35	
41 Δ P.T.	N0°24'10"E	1211.70	1211.70		+ 314.80	8.46		- 1969.89	Triangulation pt on E. line
42	N32°28'E	209.93	177.12		+ 491.92	112.69		- 1857.20	Stam Manuel & Deep streets
43	S.4°41'W	167.3		166.74	+ 148.06		13.66	- 1983.55	Stam at Town line N. Globe & center of narrow street in Manuel street
44									
45	S.33°24'W	225.6		188.34	+ 126.46		124.17	- 2094.06	S.E. fence corner of Mex. ground atop of lot
46	N84°26'W	172.0	16.68		+ 331.48		171.19	- 2141.08	point in East front line of same property - This front line continues to N. line & S.W.
SE corner									
SE corner					- 896.90			- 1978.35	
47 N.E.	N0°24'10"E	1327.98	1328.0		+ 431.10	9.27		- 1969.08	
48	S.42°26'E	19.80		14.61	+ 416.49	13.36		- 1949.72	old stam man. stam with x

34	35	36	37
9.4447197	9.9824774	9.4837117	9.9788579
2.0718820	2.0718820	1.3424227	1.3424227
9.7139349	9.9223040	9.9734435	9.5305650
1.4471580	1.4471580	2.2891428	2.2891428



34

9.4447197	9.9824774
<u>2.0718820</u>	<u>2.0718820</u>
1.5166017	2.0543594
32.86	113.33

35

9.4837117	9.9788579
<u>1.3424227</u>	<u>1.3424227</u>
0.8261344	1.3212806
6.70	20.96

36

9.7139349	9.9323040
<u>1.4471580</u>	<u>1.4471580</u>
1.1610929	1.3794620
14.49	23.96

37

9.9734435	9.5305650
<u>2.2891428</u>	<u>2.2891428</u>
2.2625863	1.8197078
183.07	66.02

38

9.8007872	9.8892706
<u>1.5611014</u>	<u>1.5611014</u>
1.3618386	1.4503720
23.01	28.21

39

9.9345738	9.7076064
<u>1.3424227</u>	<u>1.3424227</u>
1.2769965	1.0500291
18.92	11.22

40

9.9984529	8.9256089
<u>2.1014034</u>	<u>2.1014034</u>
2.0998563	1.0270123
125.85	10.64

41

9.9999893	7.8439338
<u>3.0833951</u>	<u>3.0833951</u>
3.0833844	0.9273289
1211.7	8.46

42

9.9261901	9.7298197
<u>2.3220745</u>	<u>2.3220745</u>
2.2482646	2.0518942
177.12	112.69

43

9.9985475	8.9119487
<u>2.2234959</u>	<u>2.2234959</u>
2.2220434	1.1354446
1.66.74	13.66

44

45

9.9216073	9.7407421
<u>2.3533391</u>	<u>2.3533391</u>
2.2749464	2.0940812
188.34	124.17

46

8.9867891	9.9979470
<u>2.2355284</u>	<u>2.2355284</u>
1.2223175	2.2334754
16.68	171.19

47

9.9999893	7.8439338
<u>3.1231981</u>	<u>3.1231981</u>
3.1231874	0.9671319
1328.0	9.27

48

9.8680934	9.8291312
<u>1.2966652</u>	<u>1.2966652</u>
1.1647586	1.1257964
14.61	13.36



March lines - NW 1/4 of SE 1/4 Sec. 26 continued

				Total North		Total East	
NE cor.				+ 431.10		- 1969.08	
49	N. 89° 33' W	232.78	1.83	+ 432.93	232.77	- 2201.85	pt W=1
50	"	590.05	4.63	+ 435.73	590.03	- 2559.11	pt W=2
51	"	1008.13	7.92	+ 439.02	1008.10	- 2977.18	pt W=3
52	"	1306.81	10.26	+ 441.36	1306.80	- 3275.88	NW corner -
pt. W=1				+ 432.93		- 2201.85	
53	S 22° 11' E	53.93	49.94	+ 383.00	20.36	- 2181.49	stake on Shins w. Globe ?
pt. W=2				+ 435.73		- 2559.11	
54	S 21° 45' W	53.68	49.86	+ 385.87	19.89	- 2579.00	to 2" x 2" stake
pt. W=3				+ 439.02		- 2977.18	
55	S. 43° 57' W	110.5	79.55	+ 359.47	76.69	- 3053.87	pt. on City limit line (1071.4 S. of NW cor.)
56	S. 65° 00' E	18.4	7.77	+ 431.25	16.68	- 2960.50	2" x 2" stake
57	S. 19° 05' E	53.04	50.13	+ 388.89	17.34	- 2959.84	2" x 2" stake
58	N. 7° 05' E	294.42	292.17	+ 731.19	36.31	- 2940.87	2" x 2" stake
SE cor				- 896.9		- 1978.35	
59	N. 89° 49' W	797.4	2.55	- 894.35	797.40	- 2772.70	P.L. of Shins 1/4 & S. line U.S. 216 mining claim
pt. W=4 -				- 329.53		- 2556.10	
60	N 26° 21' W	42.41	38.00	- 291.53	18.82	- 2574.92	NE center pt. U.S. 216 m. claim
S.E. corner				- 896.90		- 1978.35	
61	N 19° 36' W	30.28	28.26	- 868.64	10.06	- 1988.41	Pendleton SW. cor of North Globe
62	N 89° 49' W	797.4	2.55	- 894.35	797.4	- 2775.75	City limit line and Shins 1/4
63	N 89.49 W	1310.3	4.19	- 891.71	1310.3	- 3288.65	SW corner

49/ 7.8950854 9.9999866 50/ 7.8950854 9.9999866 51/ 7.8950854 9.9999866  
 2.3669457 2.3669457 2.7708888 2.7708888 3.0035036 3.0035036



49/

7.8950854	9.9999866
2.3669457	2.3669457
0.2620311	2.3669323
1.83	232.77

50/

7.8950854	9.9999866
2.7708888	2.7708888
0.6659742	2.7708754
4.63	590.03

51/

7.8950854	9.9999866
3.0035036	3.0035036
0.8985890	3.0034902
7.92	1008.10

52/

7.8950854	9.9999866
3.1162091	3.1162091
1.0112945	5.1161957
10.26	1306.80

53/

9.9666018	9.5769991
1.7318304	1.7318304
1.6984322	1.3088295
49.94	20.36

54/

9.9679267	9.5688555
1.7298125	1.7298125
1.6977392	1.2986680
49.86	19.89

55/

9.8572998	9.8413785
2.0433623	2.0433625
1.9006621	1.8847410
79.55	76.69

56/

9.6259483	9.9572757
1.2648178	1.2648178
0.8907661	1.2220935
7.77	16.68

57/

9.9754521	9.5144721
1.7246035	1.7246035
1.7000556	1.2390756
50.13	17.34

58/

9.9966727	9.0910082
2.4689673	2.4689673
2.4656400	1.5599755
292.17	36.31

59/

7.5051181	9.9999978
2.9016762	2.9016762
0.4067943	2.9016740
2.55	797.40

60/

9.9523562	9.6472395
1.6274683	1.6274683
1.5798245	1.2747078
38.00	18.82

61/

9.9740774	9.5256298
1.4771213	1.4771213
1.4511987	1.0027511
28.26	10.06

62/

7.5051181	9.9999978	7.5051181	9.9999978
2.9016762	2.9016762	3.1173707	3.1173707
0.4067943	2.9016740	0.6224888	3.1173685
2.55	797.4	4.19	1310.3

45



1826.21 W      57 \* 97  
 9.9523562  
 1.7558749  
 1.7082311  
 + 51.08  
 - 329.53  
 + 51.08  
 - 278.45 ✓

*Carlaeio Roble*

242.66 (1) 2199.16  
 213.97 2583.39  
 28.64 15.77  
 1.1978317  
 1.4569730  
 9.7408887 N28°50'20" E  
 1.978317 221.69  
 9.6833808 32.69  
 1.5144709

tie with N.E corner.

315.06 (4) 2125.41  
 278.45 2181.40  
 36.91 55.99  
 1.5671440 89°19'00"  
 1.7481105 33°23'40"  
 9.8190335 56°00'00"  
 1.5671440  
 9.7406783  
 1.82264657

*Lucini farolati*

423.53 2509.45  
 342.97 2549.44  
 80.56 39.99  
 1.6019514  
 1.9061195  
 9.6958319  
 1.6019514  
 9.6480038  
 1.9539476  
 89.94

339.59 2460.03  
 896.90 1978.35  
 557.31 481.68  
 2.6827586  
 1978.35  
 481.68  
 2.8672489  
 736.63

434  
 322  
 1.1  
 1.8  
 2.05  
 9.78  
 1.83  
 9.71  
 2.11  
 537  
 434  
 98  
 1.6  
 1.9  
 9.6  
 1.6  
 9.6  
 2.0  
 377  
 343  
 377  
 33  
 1.5  
 1.8  
 9.6  
 1.5  
 9.6  
 1.9  
 18



Polvo Verde

434.19	2504.26	322.41	2435.41	343.89	2346.45	503.07	2387.43
322.41	2435.41	343.89	2346.45	503.07	2387.43	533.03	2455.26
111.78	68.81	21.48	89.00	159.18	40.98	29.96	67.87
1.8376516	31.037	1.3520343	1.6125720	1.6125720	1.4765418	1.4765418	29.49
2.0483641		1.9493908	2.2018885	2.2018885	1.8316778	1.8316778	23.49
9.7892875		9.3826443	9.4106835	9.4106835	9.6448640	9.6448640	23.49
1.8376516		1.3320343	1.6125720	1.6125720	1.4765418	1.4765418	23.49
9.7195249		9.3703919	9.3967228	9.3967228	9.6062263	9.6062263	23.49
2.1181267		1.9616624	2.2158492	2.2158492	1.8703155	1.8703155	23.49
533.03	2455.30	71.55	164.58	74.19	87.50	87.50	26.41
434.19	2504.26				114.41	114.41	30.29
98.84	48.96				26.41	26.41	52.21
1.6898414					114.41	114.41	52.21
1.9949327							
9.6949087							
1.6898414	26.12						
9.6472820	110.30						
2.0425594	110.30						
		2.5659658	2.5659658	2.5659658	2.5659658	2.5659658	114.11
		2.7427330	2.7427330	2.7427330	2.7427330	2.7427330	114.11
		9.8232328	9.8232328	9.8232328	9.8232328	9.8232328	114.11
		2.8223792	2.8223792	2.8223792	2.8223792	2.8223792	114.11

Erny de Bolgwin

343.89	2346.45	377.44	2273.48	518.11	2312.83	718.11	2312.83
377.44	2273.48	518.11	2312.83	718.11	2312.83	503.07	2387.43
33.55	72.97	140.67	39.35	15.04	74.60	15.04	74.60
1.5256925		1.5949447	1.1772478	1.8727388	1.1772478	1.1772478	89.41
1.8631443		2.1482015	1.8727388	1.8727388	1.3045090	1.3045090	11.50
9.6625482		9.4467432	9.3045090	9.3045090	1.1772478	1.1772478	11.50
1.5256925		1.5949447	1.1772478	1.1772478	1.3045090	1.3045090	11.50
9.6209008		9.4303762	9.2958609	9.2958609	1.1772478	1.1772478	11.50
1.9047917		2.1645685	1.8813869	1.8813869	1.1772478	1.1772478	11.50

Palanosa C. Brooker

377.44	2273.48	431.74	2088.64	471.30	1996.27	471.30	1996.27
431.74	2088.64	471.30	1996.27	471.30	1996.27	471.30	1996.27
54.30	184.84	39.56	92.37	7.79	3.00	7.79	3.00
1.7347998		1.5970367	0.4771213	0.8915371	0.4771213	0.4771213	41.03
2.2667960		1.9655309	1.5970367	1.5970367	0.4771213	0.4771213	41.03
9.4680038		9.6315058	9.5858338	9.5858338	0.4771213	0.4771213	41.03
1.7347998		1.5970367	0.4771213	0.4771213	0.4771213	0.4771213	41.03
9.4499869		9.5949447	9.5858338	9.5858338	0.4771213	0.4771213	41.03
2.2848129		2.0020961	0.9215873	0.9215873	0.4771213	0.4771213	41.03
479.09	1999.27	647.67	2041.33	2.1124709	2.1124709	2.1124709	20.00
647.67	2041.33	2.1124709	2.1124709	2.1124709	2.1124709	2.1124709	20.00
168.58	42.06	129.56	271.50	2.4337698	2.4337698	2.4337698	20.00
1.6238693		1.6238693	1.6238693	1.6238693	1.6238693	1.6238693	20.00
2.2268040		2.2268040	2.2268040	2.2268040	2.2268040	2.2268040	20.00
9.3970633		2.2268040	2.2268040	2.2268040	2.2268040	2.2268040	20.00







Wm. Bays -

213.57	2340.84	226.90	2249.30	345.51	2249.56
226.90	2249.30	345.51	2269.56	309.57	2378.14
13.33	91.54	118.61	20.26	35.94	108.58
1.1248301	89.60	1.3066394	"	1.5555781	89.60
1.9616109	80.17	2.0742811	"	2.0357498	18.19
9.1632192	43	9.2324083	941.30	9.5198283	71.41
1.1248301	S. 81	1.3066394	"	1.5555781	"
9.1586409	43	9.2261409	"	9.4972374	"
1.9661892	92.50	2.0804985	120.36	2.0583407	114.38

John Alexander -

226.90	2249.30	249.92	2203.81	363.49	2221.18
249.92	2203.81	363.49	2221.18	345.51	2269.56
23.02	45.49	113.57	17.37	17.98	48.38
1.3621053	89.59	1.2397998	89.59	1.2547897	89.60
1.6579159	26.50	2.0552636	84.40	1.6846659	20.31
9.7041894	30	9.1845362	"	"	"
1.3621053	89.59	1.2397998	"	"	"
9.6546833	26.50	9.1794512	"	"	"
1.7074220	30	2.0603486	114.00	"	"
50.98	"	"	"	"	"

M

363.49	2221.18	249.92	2203.81	363.49	2221.18
896.90	1978.35	275.85	2129.13	363.49	2221.18
533.41	242.83	25.93	74.68	29.67	62.44
2.3853023	24.27	1.4138025	89.60	1.7954629	89.60
2.7273827	24.27	1.8732043	19.51	9.6768546	2.25
9.6579156	24.27	9.5405982	10.51	1.4723175	89.60
2.3853023	24.27	1.4138025	89.60	1.7954629	89.60
9.6170796	24.27	9.5405982	10.51	9.6768546	2.25
2.7682227	24.27	1.4138025	89.60	1.4723175	89.60
"	"	9.5158693	79.06	9.6326576	69.13
"	"	1.8979332	"	1.8396599	"

Proctor.

275.85	2129.13	393.16	2158.74	1.4723175	89.60
393.16	2158.74	363.49	2221.18	1.7954629	89.60
117.31	29.67	29.67	62.44	9.6768546	2.25
1.4714384	"	1.4723175	89.60	1.4723175	89.60
2.0693350	"	1.7954629	89.60	1.7954629	89.60
9.4020934	14.0	9.6768546	2.25	9.6768546	2.25
1.4714384	"	1.4723175	89.60	1.4723175	89.60
9.3887109	"	9.6326576	69.13	9.6326576	69.13
2.0827275	120.98	1.8396599	"	1.8396599	"



Alfonso Oliver

275.85  
321.00  
45.15

2129.13  
1985.79  
143.34

5.01630 W  
18.00

339.50  
441.59  
102.09

1985.85  
2003.52  
17.67

1.6544578  
2.1563674  
9.4982994  
1.6544578  
9.4777409  
2.1769169

2003.52  
2158.74  
155.22

1.2472365  
2.0089802  
9.2382533  
1.2472365  
9.2318362  
2.0154003

103.60

441.59  
393.16  
48.43

441.59  
896.90  
455.31

2003.52  
1978.35  
225.17

1.6860103  
2.1909477  
9.4950626  
1.6860103  
9.4747887  
2.2112216

1.4008832  
2.6583453  
8.7425379  
1.4008832  
8.7418719  
2.6590050

1.3051363  
1.8558824  
9.4492537  
1.3051363  
9.4327029  
1.8724334

2129.13  
2108.94  
20.19

441.59  
4.41

2003.52  
1986.39  
89.60  
17.13  
14.26  
95.34

71.76  
15.43

74.55

0.6444386  
9.8967229  
1.2477158

204.09  
248.60  
44.51  
1.6484576  
2.0915966  
9.5568610

2108.94  
1985.46  
123.48  
89.60  
19.49  
10.11

145.34

896.90  
275.85  
C21.05

1978.35  
2129.13  
150.78

321.0  
275.85  
45.15  
1.6449307  
2.1563674  
9.4885633

1985.79  
2129.13  
145.34  
17.17

2.11783437  
2.7931266  
9.3852171

2.1180262  
131.26

9.4688857  
2.1760450

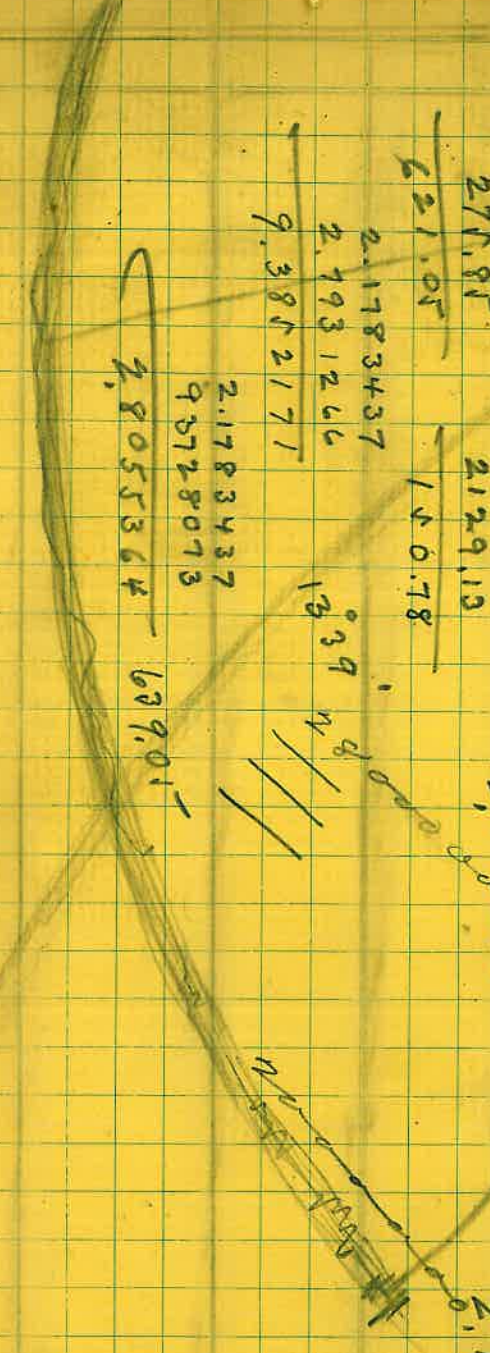
149.98

2.1783437  
2.7931266  
9.3852171

2.1783437  
9.3728073

2.8055364  
609.01

103.60



+10  
443  
33  
1.82  
2.52  
9.35  
1.875  
9.345  
9.53  
126  
104  
24  
1.1  
9.3  
2.0



109.00	- 2203.	433.55	2278.0	432.61	2164.00
+ 433.55	- 2279.	432.01	2164.0	126.46	2094.06
331.55	75.0	-.94	114.0	306.15	69.94
1.8250613		-1.9731279		1.8447256	
2.5205490		2.0569049	0.8	2.4859201	
9.3545123		7.9162230	0.9	9.3588055	12.52
1.8750613		-1.9731279		1.8447256	
9.3437042		7.91600189		9.3477792	
2.5313577		2.0571090		2.4969464	314.0

126.46	2094.06	674.00	1987.46
109.00	2203.00	896.90	1978.35
24.46	108.94	222.90	9.11
1.8884565			
2.0371874			
9.3512691			
1.8884565			
9.3406214			
2.0478351			

*R. Beecher*

481.50	1986.55	0.9595184	2.2030
896.90	1978.35	2.3481101	
		8.6114083	
		0.9595184	
		8.6112815	
		2.3482369	222.96



Globe to Miami Road.

Sta	Course	Dist	+ Lat	-	Total + North	+	W	+ Total E	Remarks.
0	0 0	00	00	00	00	00	00	00	Point under Van Dykes fence.
1	N 45° 34' E	1138.8	797.2		797.2	813.2		813.2	
2	N 59° 35' E	605.3	306.4		1103.6	521.5		1334.7	
3	N 50° 24' E	4559.1	290.6		1394.2	351.3		1686.0	
4	N 72° 47' E	815.6	241.4		1635.6	779.0		2465.0	
5	N 57° 36' E	104.5	56.0		1692.2	88.2		2553.2	
6	N 57° 36' E	2776.0	1487.5		3179.7	2343.9		4897.1	Dist should be 2726. ft.
7	N 44° 57' E	371.1	262.6		3442.3	262.2		5159.3	
8	N 65° 39' E	1099.0	453.1		3895.4	1001.2		6160.5	
9	S. 89° 21' E	1078.0		12.2	3883.2	1078.0		7238.5	
10	N 65° 10' E	406.2	170.6		4053.8	368.6		7607.1	
11	N 65° 10' E	331.2	139.1		4192.9	300.6		7907.7	
12	N 61° 13' E	7345.0	647.9		4840.8	1179.4		9087.1	
13	N 69° 00' E	33.0	11.8		4852.6	30.8		9117.9	
14	N 69° 00' E	1432.0	513.2		5365.8	1336.9		10454.8	
15	N 78° 02' E	220.0	45.6		5411.4	215.2		10670.0	
		122.2							
		5423.0	122.2		5410.8	10670.0		10670.0	

9,845,147.0      9,853,738.1      9,704,394.7      9,935,691.8      9,804,428.4      9,886,780.1  
 3,056,447.5      3,056,447.5      2,781,970.7      2,781,970.7      2,658,869.6      2,658,869.6  
 2,901,204.2



1/	9.8451470 3.0564475 <u>2.9015945</u> 797.15	2/	9.8537381 3.0564475 <u>2.9101856</u> 813.18	3/	9.7043947 2.7819707 <u>2.4863654</u> 306.45	4/	9.9356918 2.7819707 <u>2.7176625</u> 521.51	5/	9.8044284 2.6588696 <u>2.4632980</u> 290.60	6/	9.8867801 2.6588696 <u>2.5456497</u> 351.28
----	--	----	--	----	--	----	--	----	--	----	--

4/	9.4712710 2.9114772 <u>2.3827482</u> 241.4	5/	9.9800908 2.9114772 <u>2.8915680</u> 779.05	6/	9.7290244 2.0191163 <u>1.7481407</u> 55.99	7/	9.9265112 2.0191163 <u>1.9456275</u> 88.23	8/	9.7290244 3.4434195 <u>3.1724439</u> 1487.5	9/	9.9265112 3.4434195 <u>3.3699307</u> 2343.90
----	---	----	--	----	---	----	---	----	--	----	---

7/	9.8498637 2.5694910 <u>2.4193547</u> 262.64	8/	9.8491057 2.5694910 <u>2.4185967</u> 262.18	9/	9.6152234 3.0409977 <u>2.6562211</u> 453.13	10/	9.9595393 3.0409977 <u>3.0005370</u> 1001.20	11/	8.0547814 3.0326188 <u>1.0874002</u> 12.23	12/	9.9999721 3.0326188 <u>3.0325909</u> 1077.95
----	--	----	--	----	--	-----	---	-----	---	-----	---

10/	9.6232287 2.6087399 <u>2.2319686</u> 170.60	11/	9.9578626 2.6087399 <u>2.5666025</u> 368.64	12/	9.6232287 2.5200903 <u>2.1433190</u> 139.10	13/	9.9578626 2.5200903 <u>2.4779529</u> 300.57	14/	9.6825952 3.1289160 <u>2.8115112</u> 647.9	15/	9.9427255 3.1289160 <u>3.0716415</u> 1179.35
-----	--	-----	--	-----	--	-----	--	-----	---	-----	---

13/	9.5543292 7.5185139 <u>1.0728431</u> 11.83	14/	9.9701517 7.5185139 <u>1.4886656</u> 30.81	15/	9.5543292 3.1559430 <u>2.7102722</u> 513.19	16/	9.9701517 3.1559430 <u>3.1260947</u> 1338.9	17/	9.3166885 2.3424227 <u>1.6591112</u> 45.62	18/	9.9904580 2.3424227 <u>2.3328807</u> 215.22
-----	---	-----	---	-----	--	-----	--	-----	---	-----	--



Glade to Miami Rd. Continued

			+	-	Total	+	+	-	Total	
			5423.0	12.2	5410.8	10670.0			10670.0	
		12212.2								
16	N78°02'E	11050.0	229.1		5639.9	1081.0			11751.0	
17	S.87°05'E	566.2		28.8	5611.1	565.5			12316.5	
18	S.51°20'E	338.0		211.2	5399.9	276.3			12592.8	S.50°11'E 24.23 52547'E
- 19	S.50°11'E	140.0		89.6	5310.3	107.5			12700.3	
20	S25°48'E	926.8		834.4	4475.9	403.4			13103.7	
21	S.77°51'E	100.0		21.0	4452.9	97.8			13201.5	S.50°11'E 24.24 57433'E
22	N.78°05'E	1000.0	20.6		4475.5	97.8			13299.3	S0°19'W 26.07 52548'E 52147'E
23	N63.51'E	205.2	90.4		4565.9	184.2			13483.5	S.0°19'W 78.10 577°51'E
24	N.58°01'E	877.0	1464.5		5030.4	743.9			14227.4	N0°19'W 26.07 N26°26'E
25	S.73°33'E	393.0		111.3	4919.1	379.9			14607.3	S.21°47'E 26.07
26	S.81°51'E	311.4		44.1	4875.0	308.3			14915.6	S.21°47'E 26.07
27	N.88°23'E	198.5	51.6		4880.6	198.4			15114.0	S.21°47'E S.50°11'E 24.23
28	N.79°55'E	502.0	87.9		4968.5	494.3			15608.3	5600 2350 3250
29	S.62°37'E	182.0		93.7	4884.8	161.6			15769.9	
30	S.61°06'E	429.0		207.3	4677.5	375.6			16145.5	
31	N88°17'E	124.0	3.7		4681.2	123.9			16269.4	
		1810.3	56.1							

16/

9.316 6885

9.990 4580

17/

8.706 5766

9.999 4370

18/

9.795 7330

9.892 5365

9.528 9167



16)

9.316 6885  
3.043 3623  
2.360 0508  
229.12

9.990 4580  
3.043 3623  
3.033 8203  
1081.0

17)

8.706 5766  
2.752 9699  
1.459 5465  
28.81

9.999 4370  
2.752 9699  
2.752 4069  
565.47

18)

9.795 7330  
2.528 9167  
2.324 6497  
211.18

9.892 5365  
2.528 9167  
2.421 4532  
276.35

19)

9.806 4060  
2.146 1280  
1.952 5340  
89.65

9.885 4162  
2.146 1280  
2.031 5442  
107.53

20)

9.424 6147  
2.966 9860  
2.391 6007  
246.38

9.984 0852  
2.966 9860  
2.951 0712  
893.41

21)

9.323 1928  
2.000 0000  
1.323 1928  
21.05

9.990 1612  
2.000 0000  
1.990 1612  
97.76

22)

9.314 8965  
2.000 0000  
1.314 8965  
20.65

9.990 5382  
2.000 0000  
1.990 5382  
97.84

23)

9.644 1654  
2.312 1774  
1.956 3428  
90.44

9.953 1038  
2.312 1774  
2.265 2812  
184.20

24)

9.724 0075  
2.942 9996  
2.667 0071  
464.52

9.928 4994  
2.942 9996  
2.871 4990  
743.86

25)

9.452 0603  
2.594 3926  
2.046 4529  
111.30

9.981 8490  
2.594 3926  
2.576 2416  
376.92

26)

9.151 5694  
2.493 3186  
1.644 8880  
44.15

9.995 5915  
2.493 3186  
2.488 9101  
308.26

27)

8.450 4402  
2.297 7605  
0.748 2007  
5.60

9.999 8271  
2.297 7605  
2.297 5876  
198.42

28)

9.243 2374  
2.700 7037  
1.943 9411  
87.90

9.993 2396  
2.700 7037  
2.693 9433  
494.25

29)

9.662 7026  
2.260 0714  
1.922 7740  
83.71

9.948 3881  
2.260 0714  
2.208 4595  
161.60

30)

9.684 2010  
2.632 4573  
2.316 6583  
207.33

9.942 2386  
2.632 4573  
2.574 6959  
375.57

31)

8.476 4984  
2.093 4217  
6.569 9201  
3.72

9.999 8050  
2.093 4217  
2.093 2267  
123.94

20

9.954 3963  
2.966 9860  
2.921 3823  
834.42

9.638 7199  
2.966 9860  
2.605 7059  
403.37



		+	-	Total +	+	-	Total +
				4681.2	15749.5		16269.4
		18710.3					
32	N 47° 20' E	511.0	210.8	4892.0	228.7		16498.1
33	N 39° 38' E	747.0	575.3	5467.3	476.5		16974.6
34	N 39° 38' E	500.0	385.1	5852.4	318.9		17293.5
35	N 41° 28' E	376.6	282.2	6134.6	249.4		17542.9
36	N 28° 48' E	195.8	71.6	6306.2	94.3		17637.2
37	N 17° 45' E	408.2	388.8	6695.0	124.4		17761.6
38	N 23° 23' E	491.0	450.7	7145.7	194.9		17956.5
39	N 36° 24' E	192.0	154.5	7300.2	113.9		18070.4
40	N 56° 52' E	100.0	54.7	7354.9	83.7		18154.1
41	N 67° 37' E	100.0	4.2	7359.1	99.9		18254.0
42	S 70° 05' E	291.0		7260.0	273.6	99.1	18527.6
43	S 79° 20' E	495.3		7168.3	486.7	91.7	19014.3
44	S 22° 46' E	127.7		7050.5	49.4	117.8	19063.7
45	S 7° 03' E	125.4		6926.0	15.4	124.5	19079.1
46	S 7° 40' W	97.5		6829.4		96.6	19066.1
47	S 26° 28' W	85.4		6752.9		76.5	19028.0
48	S 58° 16' E	119.0		6690.3	101.2	62.6	19129.2
		9273.2					
		28681.4					

32/

9,831,058.0    9,866,469.9

33/

9,886,571.0    9,804,733.6

34/

9,886,571.0    9,804,733.6



32/

9,831,0580	9,866,4699
<u>2,492,7604</u>	<u>2,492,7604</u>
2,323,8184	2,359,2303
210.77	228.68

33/

9,886,5710	9,804,7336
<u>2,873,3206</u>	<u>2,873,3206</u>
2,759,8916	2,678,0542
575.30	476.50

34/

9,886,5710	9,804,7336
<u>2,698,9700</u>	<u>2,698,9700</u>
2,585,5410	2,503,7036
385.08	318.94

35/

9,874,6795	9,820,9788
<u>2,575,8803</u>	<u>2,575,8803</u>
2,450,5598	2,396,8591
282.20	249.38

36/

9,942,6561	9,682,8250
<u>2,291,8127</u>	<u>2,291,8127</u>
2,234,4688	1,974,6377
171.58	94.33

37/

9,978,8175	9,484,1066
<u>2,610,8730</u>	<u>2,610,8730</u>
2,589,6905	2,094,9796
388.77	124.44

38/

9,962,7812	9,598,6602
<u>2,691,0815</u>	<u>2,691,0815</u>
2,653,8627	2,289,7417
450.68	194.87

39/

9,905,7386	9,773,3614
<u>2,283,3012</u>	<u>2,283,3012</u>
2,189,0398	2,056,6626
154.54	113.94

40/

9,737,6611	9,922,9334
<u>2,000,0000</u>	<u>2,000,0000</u>
1,737,6611	1,922,9334
54.66	83.74

41/

8,618,9369	9,999,6242
<u>2,000,0000</u>	<u>2,000,0000</u>
0,618,9369	1,999,6242
4.16	99.91

42/

9,532,3123	9,973,2152
<u>2,463,8930</u>	<u>2,463,8930</u>
1,996,2053	2,437,1082
99.13	273.60

43/

9,267,3945	9,992,4301
<u>2,694,8683</u>	<u>2,694,8683</u>
1,962,2628	2,687,2984
91.68	486.74

44/

9,964,7726	9,587,6876
<u>2,106,1909</u>	<u>2,106,1909</u>
2,070,9635	1,693,8785
117.75	49.42

45/

9,996,7040	9,088,9700
<u>2,098,2975</u>	<u>2,098,2975</u>
2,095,0015	1,187,2675
124.45	15.39

46/

9,996,1004	9,125,1872
<u>1,989,0046</u>	<u>1,989,0046</u>
1,985,1050	1,114,1918
96.63	13.01

47/

9,951,9171	9,649,0203
<u>1,931,4579</u>	<u>1,931,4579</u>
1,883,3750	1,580,4782
76.45	38.06

48/

9,720,9581	9,929,6770
<u>2,075,5470</u>	<u>2,075,5470</u>
1,795,5051	2,005,2240
62.59	101.21



Stoke Miami Rd continued

		+	-	Total	+	-	Total
				6690.3			19129.2
49	N 78° 33' E	24273.2 1550.0	30.8	6721.1	152.3		19281.5
50	S. 75° 59' E	103.3	25.0	6696.1	100.2		19381.7
51	S. 16° 05' E	93.4	89.7	6606.4	25.9		19407.2
52	S. 7° 11' W	166.2	164.9	6441.5		20.8	19386.4
53	S 54° 55' E	1690.0	269.6	6171.9	383.8		19770.2
54	S 0° 10' W	25260.1 130.0 712.5	712.5	5459.4		2.1	19768.1
118 ft				5399.9			12592.8
W Sec. 22	N. 89° 47' W	512	190	5401.8	512.0		13105.0

Dist. Stoke to Miami  
is 25210.1 ft  
or 4.78 <sup>100</sup>/<sub>100</sub> miles  
practically 4 <sup>3</sup>/<sub>4</sub> miles.

J.M.



49/

9.2977883  
2.1903317  
1.4881200  
30.77

9.9912696  
2.1903317  
2.1816013  
152.26

50/

9.3841815  
2.0141003  
1.3982818  
25.02

9.9868726  
2.0141003  
2.0009729  
10022

51/

9.9826600  
1.9703469  
1.9530069  
89.74

9.4425349  
1.9703469  
1.4128818  
25.88

52/

9.9965778  
2.2206310  
2.2172088  
164.90

9.0970651  
2.2206310  
1.3176961  
20.78

53/

9.7594920  
2.6711728  
2.4306648  
269.57

9.9129215  
2.6711728  
2.1840943  
383.8

54/

9.9999982  
2.8527849  
2.8527831  
712.50

7.4637255  
2.8527849  
0.3165134  
2.07

55/

7.5776684  
2.7092700  
0.2869384  
1.90  
5401.8  
4475.9  
925.9

9.9999969  
2.7092700  
2.7092669  
5120  
13105.3  
13103.7  
1.5

56E

25 210  
21 120  
40900  
36960  
39400

15280  
4.78

9.9999982  
2.8527849  
2.8527831  
712.50



Map L.S. 51 - Old and New Broad Street - South of North Globe Town Site Line. 20

	N	S	Total N	E	W	Total E.	
	00	00	00	00	00	00	Stone (Pondston) Road and N. Town Line
1) S. 11° 36' E 420.00		411.39	411.39	83.22		83.22	angle pt. Pondston.
2) S. 57° 56' E 400.00		212.36	623.61	338.83		422.05	City Monument near Bankers Garden
3) N. 76° 30' 30" W 401.93	95.31		-527.70		574.62	27.43	Point on New Broad St. (along Scot)
4) N. 19° 57' 30" W 303.34	285.14		-242.36		103.54	-76.11	angle point.
5) N. 8° 27' W 202.18	200.12		-42.24		29.73	-105.84	pt. on N. boundary of Globe T.S.
6) N. 68° 16' E 113.98	113.98		00.00	105.84	27.77	000	to place of beginning.

623.19	624.03	528.11	527.66
	623.19	527.66	
	0.84	0.40	
	0.42	0.22	

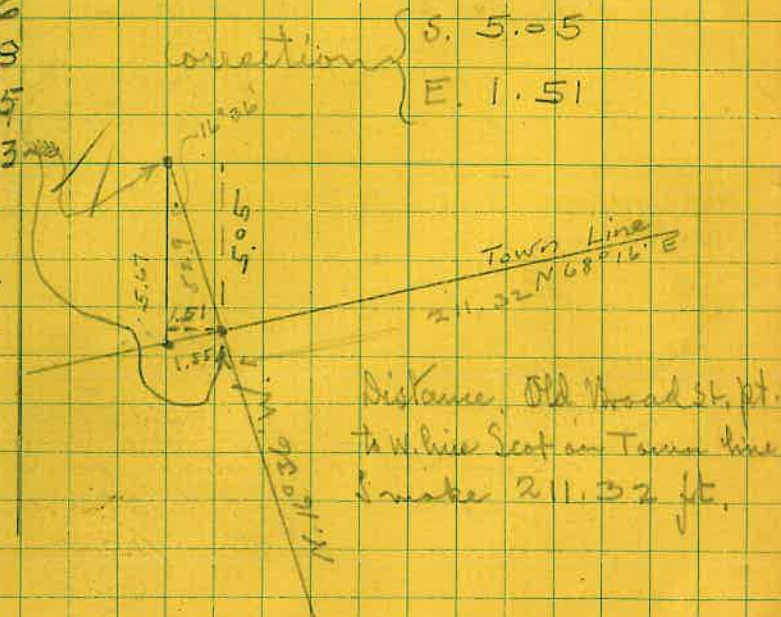
7) S. 16° 46' E 61.6		58.98	-470.37	17.77	83.22	100.99	(1) angle pt. Pondston. to angle pt. W. line Old Broad St.
8) N. 84° 14' W 93.31	9.38		-614.23		92.84	329.21	City monument. Corner of Block at Bankers Garden.

SCOT STREET (From above calculations on Map L.S. 51 and Pondston's Globe T.S. map.)

8)				-614.23	260.65	329.21
0.14	9	N. 78° 31' W 266.7	52.63	-561.60	241.36	68.56
2	10	N. 49° 29' W 118.0	75.95	-485.65	89.44	-20.88
2	11	N. 37° 26' W 143.5	112.88	-372.77	86.97	-107.85
2	12	N. 16° 36' W 310.3	294.57	-78.20	87.23	-196.23
			541.08		88.63	

78.20	1,893,2068	89.60
196.23	2,292,7614	2143.40
	9,600,4414	68,16.00

1,893,2068	9,668,4331
2,324,7737	211.24

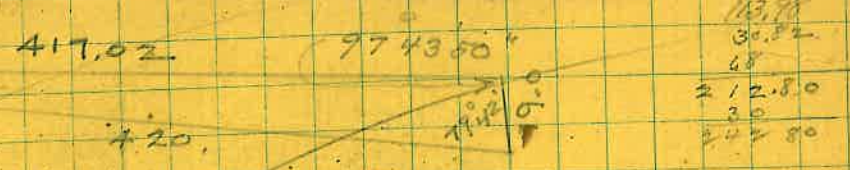


9.99	2952	9.297	1641	417.02	7743.50	113.98
2.623	2493	2.623	2493	+20	19.0	30.32
						68
						212.80
						30
						242.80



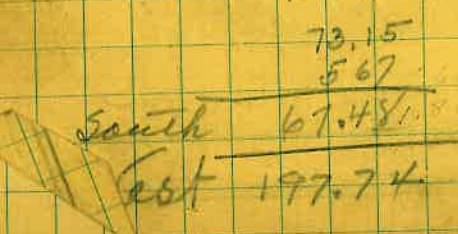
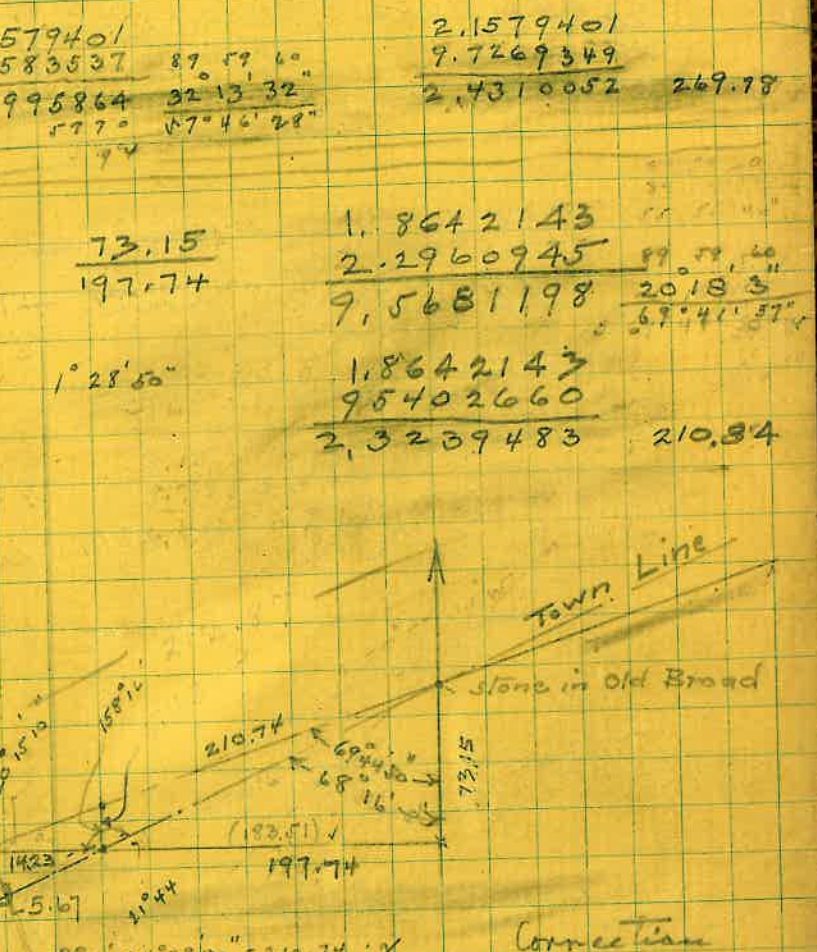
1) 7.9912952 9.2971641  
 2.6232493 2.6232493  
 2.6145445 1.9204134  
 2) 9.7250174 9.9281043  
 2.6020600 2.6020600  
 2.3270774 2.5301640  
 212.36 338.97  
 3) 9.3731540 9.9875416  
 2.6084511 2.6084511  
 1.9816051 2.5959927  
 91.85 374.41  
 4) 9.9731236 9.5330090  
 2.4819297 2.4819297  
 2.4550533 2.0149387  
 285.14 103.50  
 5) 9.9952597 9.1671586  
 2.3057382 2.3057382  
 2.3009979 1.4728968  
 199.99 29.71  
 6) 9.5685387 9.9679771  
 2.0568287 2.0568287  
 1.6253674 2.0248058  
 42.21 105.88  
 7) 9.9811331 9.4601079  
 1.7895807 1.7895807  
 1.7707138 1.2496886  
 58.98 17.77  
 8) 9.0020687 9.9977966  
 1.9699282 1.9699282  
 0.9719969 1.9677248  
 9.38 92.84

439 : 401 = T. 5029 : X  
 0.0784966  
 2.6031444  
 2.6816410  
 2.6424645  
 0.0391765  
 5008.60  
 4734.50  
 2.34.10  
 47.43.50  
 79.42  
 100.00.00  
 N 11° 26' W  
 234.10  
 N 14° 00' 10" W



97° 43' 50" : 77° 42' = 420 : X  
 2.6232493  
 9.9929444  
 2.6161937  
 9.9960349  
 2.6201588 = 417.02  
 298.4  
 240  
 322.4  
 S. 614.23 E. 329.21  
 S. 470.37 E. 100.99  
 S. 143.86 E. 228.22  
 2.1579401  
 2.3583537  
 9.7995864  
 87.59.60  
 32.13.32  
 57.46.28  
 2.1579401  
 9.7269349  
 2.4310052 269.78

9) 9.2990339 9.9912184  
 2.4240230 2.4260230  
 1.7250569 2.4172414  
 53.10 261.36  
 1° 25' 50"  
 10) 9.8126923 9.8809376  
 2.0718820 2.0718820  
 1.8845743 1.9528196  
 76.66 89.71  
 11) 9.8998539 9.7837878  
 2.1568519 2.1568519  
 2.0567058 1.9406397  
 113.90 87.23



68° 16' : 90° = 197.74 : X  
 2.2960941  
 9.9699771  
 2.3291174  
 212.87

180° : 1° 25' 50" = 210.74 : X  
 2.3237470  
 8.4122587  
 0.7360007  
 9.5684387  
 1.1674620  
 9.5669964  
 0.7344084  
 14.71  
 Connection  
 5.67 S.  
 1.69 E.



Location of Structure on Scott St. and on San Tee St. -

	N	S	Total	N	E	W	Total	E		
000				000					000	Redell's Store and Bldg. & Bldk. -
1	S 68° 16' W	116.00	42.95	- 42.95		107.75	- 107.75			Stomach + in curb.
2	S 68° 16' W	97.40	36.07	- 79.02		90.48	- 198.23			Tr. in Scott St. -
3	S 16° 24' E	103.95	99.72	- 178.74	29.35		- 168.88			Point A. in Scott St.
A										
4	S 16° 24' E	71.77	68.85	- 247.59	20.26		- 148.62			Cor. Bldg. & Cor. San Tee on Scott.
A										
5	S 52° 57' W	135.40	81.34	- 260.08		107.75	- 276.63			Cor. Bldg. - in San Tee
A										
6	S 58° 00' W	195.30	103.33	- 282.07		165.37	- 334.25			West end Bldg. -
2										
7	S 21° 59' E	304.87	282.70	- 361.72	114.12		- 84.11			Iron in Sect. - (all lines of E. side Scott)

1)	9.5685387	9.9679771	4)	9.9819608	9.4507747	7)	9.9672169	9.5732626
	2.9644580	2.0644580		1.8559429	1.8559429		2.4841147	2.4841147
	1.6329967	2.0324351		1.8379037	1.3067176		2.4513316	2.0573773
	42.95	107.75		68.85	20.26		282.70	114.12
2.)	9.5685387	9.9679771	5)	9.7799655	9.9020628			
	1.9885590	1.9885590		2.1303338	2.1303338			
	1.5570977	1.9565361		1.9102993	2.0323966			
	36.07	90.48		81.34	107.75			
3)	9.9819608	9.4507747	6)	9.7242097	9.9284205			
	2.0168245	2.0168245		2.2900346	2.2900346			
	1.9987853	1.4675992		2.0142443	2.2184551			
	99.72	29.35		103.33	165.37			



Location of Erie Company's Corner. Bone Street, Willow Street and Broad Street.

Station	Course	Dist	Lat			Dep.			Total E	Total W	Total N	Total S
			+ N	- S	Total N	+ E	- W	Total E				
Center of City	S to				00			00				
SW cor. Era	S 65° 07' W	424.70		178.70	-178.70		385.27	-385.27				
NW cor. Era	N 36° 41' W	298.00	238.77		+60.07		178.30	-563.57				
Intersect. with	N 60° 05' E	428.35	213.63		+273.70	371.28		-190.29				
Bone St.												
Main N. 4	S 39° 08' E	258.16		200.25	+73.45	162.93		-29.36				
Center of City	S 21° 42' E	79.20		73.59	-00	29.28		00				

2	3	4	5	6	7	8	9	10
9,624,0468	9,957,6870	9,903,7701	9,776,9369	9,697,8741	9,937,8947	9,937,8947	9,937,8947	9,937,8947
2,628,0823	2,628,0823	2,474,2163	2,474,2163	2,631,7938	2,631,7938	2,631,7938	2,631,7938	2,631,7938
2,252,1291	2,185,7693	2,377,9864	2,251,1532	2,329,6729	2,569,6935	2,569,6935	2,569,6935	2,569,6935
178.70	385.27	225.58	178.30	213.63	371.28	371.28	371.28	371.28
9,889,6822	9,800,1169	9,968,0777	9,567,9044	9,567,9044	9,567,9044	9,567,9044	9,567,9044	9,567,9044
2,411,8890	2,411,8890	1,898,7252	1,898,7252	1,898,7252	1,898,7252	1,898,7252	1,898,7252	1,898,7252
2,301,5712	2,212,0059	1,866,8029	1,466,6296	1,466,6296	1,466,6296	1,466,6296	1,466,6296	1,466,6296
200.25	162.93	73.59	29.28	29.28	29.28	29.28	29.28	29.28

*This goes*

Location of Sabine Banker's Garden Lot No 2







Broad - Boone - Euclid, and Willow and Blum Banker Garden.

146

		+ N	S	N	+ E	- W	E	
P.I. Broad & Broad								Page 5
Mon. No. 2	N 39° 07' W			771.79			93.05 - 597.03	Page 5
1) NW cor lot 8	N 84° 08' W	93.52	9.56	781.35			93.05 - 690.08	123.53
2) W cor lot 8	S 15° 26' W	312.00		480.62			83.04 - 773.12	11.95
3) P.I. Broad & Willow	S 15° 26' W	44.90		437.35			11.95 - 785.07	N 39° 07' W
4) P.I. at N. line Euclid	S 21° 49' E	183.47		267.04	68.11		- 716.90	45° 01'
5) " " N. line Boone	S 21° 49' E	269.80		16.58	100.25		- 616.65	N 84° 08' W
6) NW cor Era Min. Wt.	N 60° 19' E	68.54		60.37	52.74		- 563.91	80.26
7) P.I. Boone & Broad	N 60° 08' E	498.35		273.70	371.42		- 192.49	179.60
8) to P.I. Euclid & Broad	N 39° 05' W	299.60		506.28	188.91		- 381.40	142.41
9) Mon. No. 2	N 39° 05' W	342.10		771.77	215.03		- 597.03	37.11
		764.67	764.84		592.66	592.50		129.41
		40.08	- 0.07		- 0.08	+ 0.08		179.60
11) 9.0095096	9.9977196	2.9840503	9.4250726	9.9840503	9.4250726			129.29
1.9709045	1.9709045	2.4941546	2.4941546	1.6522463	1.6522463			939.68
0.9804141	1.9686241	2.4792049	1.9192262	1.6362966	1.0773189			453.27
9.56	93.03	300.75	80.03	43.28	11.95			1392.90
								1209.48
								939.68
4) 9.9677247	9.5701200	9.9677247	9.5701200	9.8051908	9.8862568			267.80
2.2635651	2.2635651	2.4310419	2.4310419	1.8359441	1.8359441			183.47
2.2312898	1.8336851	2.3987666	2.0017619	1.6411349	1.7222009			453.27
170.33	68.18	250.48	100.27	43.77	52.75			179.60
								720.8
								107.52
7) 9.6992148	9.9381126	9.8899903	9.7996507	9.8899903	9.7996507			83.10
2.6317983	2.6317983	2.4765418	2.4765418	2.5340261	2.5340261			87.01
2.3290136	2.5699114	2.3665321	2.2761925	2.4240164	2.3336768			170.11
243.31	371.46	232.56	188.88	265.47	215.01			179.60
9.56								9.49
43.88								
213.54								
232.79								
499.77								
794.25								
264.48								
	2.58	9.56	764.67	9	0.22			
		43.77	2.17	0.24				
		217.31	2.17					
		232.56	18					
		265.47	37					
		764.67						

to Willow - West on Euclid - S on Trenching - E on Park & N on Willow -  
a discrepancy of 1/2 minute

+ - + - + E



4 Willow - West an Enclid - San Tamulin E an Push + N an Willow -  
 a discrepancy of 1/2 minute

11	PI N. line Enclid & Willow			259.36	267.04			354.30	-	716.90	N 21 49 W	179.60
12	PI N. line Enclid & Tamulin	S 53 49 W	439.25	259.32	768	08.86	354.53	-	1071.20	104.21	104.41	75.15
13	PI N. line Bone & Tamulin	S 21 24 1/2 E	297.91	277.36	-	269.72	108.74		-	962.34	S 53 50 W	
14	Perelle Lane pt. an Tamulin	S 21 24 1/2 E	10.30	9.59	-	279.81	3.76		-	958.58	S 21 55 W	648.05
15	Escalante & School	S 21 24 1/2 E	322.00	299.82	-	579.13	117.66		-	840.92	S 89 54 30	97.81
16	School	S 21 24 1/2 E	252.00	234.55	-	813.78	91.91		-	749.01	S 89 29 30 E	787.81
17	4' x 4' plot an Willow	S 21 24 1/2 E	213.81	199.06	-	1012.86	78.04		-	670.97	90.31	57.4
18	PI Willow and Enclid	N 68 41 E	432.46	57.35	-	855.53	403.25	349.24	-	267.11	159 00 30	213.81
19	PI Willow & N. line Bone	N 21 50 W	937.68	879.27	+	16.62		349.41	-	616.65	N 20 59 30 E	90.050
20	PI " & N. line Enclid	N 21 50 W	269.80	250.42	+	267.04		100.25	-	716.90		
21	PI N. line Enclid & Tamulin	S	1280.01	1279.72			100.25	809.34				
			- .7	+ .18			+ .56	- .55				

22	9.7711249	9.9069446	3/	9.9689510	9.5623074	4/	9.9689510	9.5623074
	2.6427118	2.6427118		2.4740851	2.4740851		1.0128372	1.0128372
	2.4133367	2.5496564		2.4430361	2.0363925		0.9817882	0.5751446
	259.32	354.53		277.36	108.74		9.59	3.76
5/	9.9689510	9.5623074	6/	9.9689510	9.5623074	7/	9.9689510	9.5623074
	2.5078559	2.5078552		2.4014005	2.4014005		2.3300280	2.3300280
	2.4768069	2.0701626		2.3703515	1.9631079		2.2989790	1.8923354
	299.78	117.53		234.51	91.91		179.06	78.04
8/	9.5605310	9.9692227	9/	9.9676742	9.5704355	10/	9.9676742	9.5704355
	2.6363475	2.6363475		2.9729800	2.9729800		2.4310419	2.4310419
	2.1968785	2.6050702		2.9406547	2.5434155		2.3987161	2.0014774
	157.35	403.25		872.27	-333.74		250.45	100.34
					349.47			

203.20  
 168.4  
 4.8



Pendleton's Meander Pts along Mayers Street and lot corners -

				+ N -		- E		
P.L. N. line & T. site line:				-269.72		-962.34		5.21 24 30 E 52° 06'
1) P.L. on T. site line (M)	S 21° 24' E	10.45	9.73	-279.45	3.81	-958.53		53° 04' 30" W
2) P.L. N-1	S 30° 41' 30" W	347.50	298.82	-578.27		177.37	-1135.90	37° 10' 30" W
3) P.L. N-2	S 37° 10' 30" W	221.80	176.73	-800.07		134.02	-1269.92	
				-755.00				
P.L. N-1 -				-578.27		-1135.90		53° 04' 30" W
4) Max & Max (line) on school	S 4° 18' 30" E	251.00	250.79	-828.56	18.86	-1117.04		35° 00' 00"
5) SW cor. Ruiz on school	S 21° 10' 30" E	209.00	194.87	-773.16	75.49	-1060.41		51° 52'
6) Cor. Ruiz school and Barragan	S 29° 42' 30" E	196.00	170.07	-748.34	97.43	-1038.47		53° 04' 30" W
7) Barragan Escalante & school	S 72° 01' 30" E	244.00	75.30	-653.57	232.09	-903.81		60° 30'
8) NW cor. Barragan & 9th	S 4° 10' 30" E	93.00	92.75	-671.02	8.77	-1129.13		30° 41' 30"
								29° 48' 30"
								102.43
								30° 41' 30"
								72° 01' 30"
								34° 52'
								30° 41' 30"
								4.10 30
P.L. N-2				-755.00		-1269.92		82° 38'
9) Cor. school and Max	S 45° 21' 30" E	155.00	108.72	-863.72	110.48	-1159.44		37° 10' 30"
10) Cor. school & side of town	S 40° 44' 30" E	204.00	151.56	-909.56	133.14	-1136.78		45° 27' 30"
								77° 00'
								37° 10' 30"
								110° 44' 30"
P.L. N-2				-755.00		-1269.92		
11) P.L.	S 37° 10' 30" W	250.06	199.63	-954.68		151.42	-1421.34	
12) Volungo Max on T. line & street	N 52° 49' 30" W	96.41	58.26	-896.42		16.82	-1498.16	
13) Stone marked H.E. 498	S 89° 56' 30" W	480.19	-0.48	-896.90		480.19	-1978.35	
14) Old stone monument	N 16° 19' E	29.00	28.11	-868.79	8.32	1970.03		see page 74

5 1/4 1/4 line (SE 1/4) sec. 26



S  $\frac{1}{4}$   $\frac{1}{4}$  line (SE  $\frac{1}{4}$ ) Sec. 26

			+ N	- S	+ E	- W
SE cor. Sec. 26					-2222.36	- 672.96
1) $\frac{1}{4}$ $\frac{1}{4}$ cor. on E Sec. line	N. 0° 15' 10" E	1321.90	1321.90		- 900.46	- 5.83
2) point in ball ground.	N. 89° 49' W	300.00	0.96		- 899.50	300.00 - 967.13

1) 9.9999958	7.6446149	3) 7.5051181	9.9999978
3.1211986	3.1211986	2.4771213	2.4771213
3.1211944	0.7658135	-9.9822394	2.4771191
1321.90	5.83	0.96	300.00

1) -899.50 -967.13  
 -828.56 -1117.04  
 + 70.94 -149.91

1.8508912  
 2.1758306  
 N 9.6750606 W 25° 19' 30" W  
 1.8508912 N 54° 40' 30" W  
 9.6311924 165.84  
 2.2196988

2) -899.50 -967.13  
 -773.16 -1060.41  
 + 126.34 -93.28

1.9697885  
 2.1015409 N 36° 26' 30" W  
 9.8682476  
 1.9697885  
 9.7737609  
 2.1960276 157.04

3) 899.50 -967.13  
 -748.34 -1038.47  
 + 151.16 -71.34

1.8533331  
 2.1794369 N 25° 16' W  
 9.6738962  
 1.8533331  
 9.6302568  
 2.2230763 167.14

4) -899.50 -967.13  
 -653.57 -903.81  
 + 245.93 + 63.32

1.8015409  
 2.3908115  
 9.4107294  
 1.8015409  
 9.3968046  
 2.4047363 253.94

5) -899.50 -967.13  
 -863.72 -1159.44  
 + 35.78 -192.31

1.5536403  
 2.2840019  
 9.2696384 W 10° 32' 30" W  
 1.5536403 N 79° 27' 30" W  
 9.2622205  
 2.2914198 195.62

+ N  
 - S  
 + E  
 - W

6) -899.50 -967.13  
 -909.56 -1136.78  
 - 10.06 -169.65

1.0025980  
 2.2295539  
 8.7730441 W 3° 23' 30" S  
 1.0025980 N 5° 86' 36" W  
 8.7723920  
 2.2302060 169.91

149



Location of S.E. cor. - Sec. 26.

105

		+ N	- S	+ N	- E	- W	+ E
PT. North line Banc & T. line					- 269.72		- 962.34
1/2 PT. on Township	S 21° 24' E	1062.18	988.89	- 1258.61	387.71		- 574.63
2/3 Meander Pt.	S 1° 43' E	848.47	848.09	- 2106.70	25.42		- 549.21
3/4 S.E. cor. Sec. 26	S 47° 15' W	168.06	114.08	- 2220.78		123.41	- 672.62

See below

9975	9951	521 24 30 E	9,968,9510	9,562,3074	9,999,8050	8,476,4984
473.1	378.4	19 41 30	3,026,1982	3,026,1982	2,928,6365	2,928,6365
9975	39,804	S 1 43 E	2,995,1492	2,588,5056	2,928,4415	1,405,1349
29725	79,608	48 58	988.89	387.71	848.09	25.42
69825	69,657	47 15	9,831,7423	9,865,8868		
39900	298.53		2,225,4644	2,225,4644		
471,917.25	376,545.84		2,057,2067	2,091,3512		
			114.08	123.41		

South and West Section lines Sec. 26.

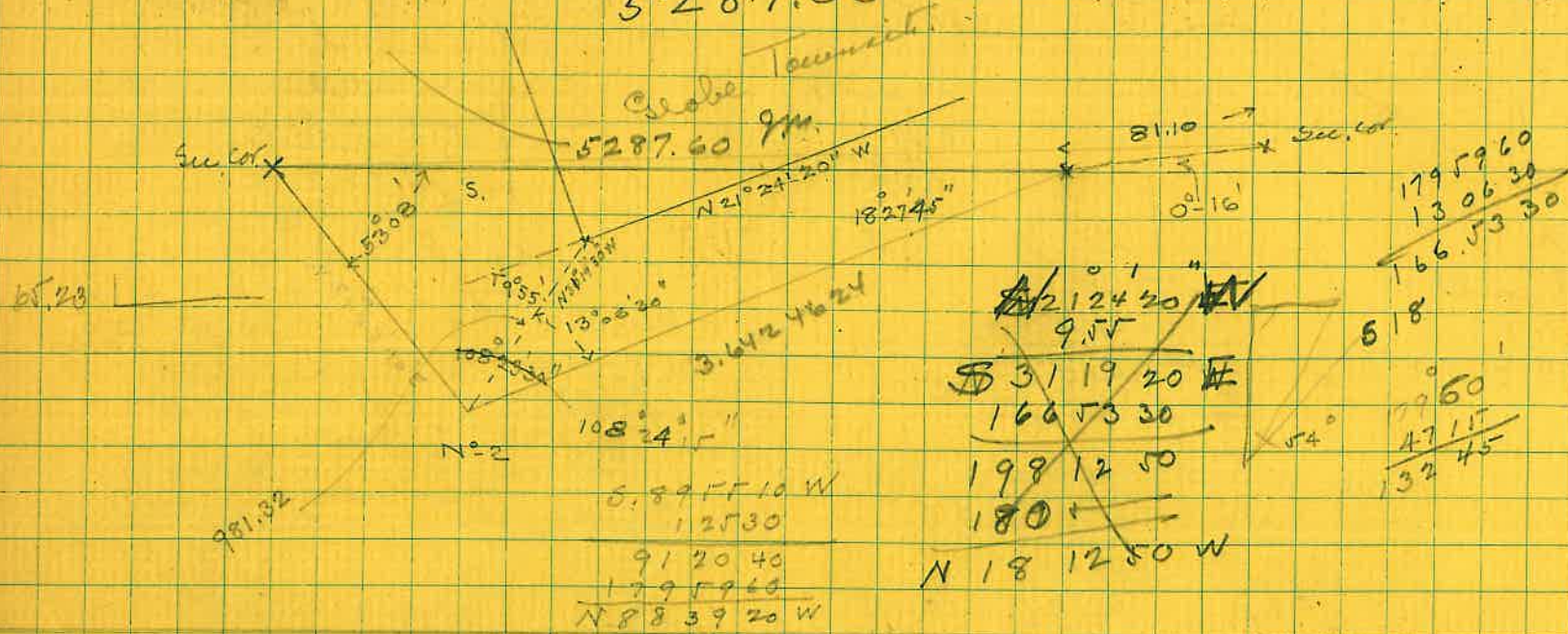
115 1/2	49	119 1/4	120 1/2	119 1/4
- 2141.26				
+ 2028.58				
4169.84				
2,547,0605				
3,620,1194				
18,926,941				
449 51	926,9072			
	359			
		2508 1359		
		10: 359 =		
		359		
		2508: 3598 10: 4		
		3590		
		2508 1		
			2,547,0601	
			8,926,3623	
			3,621,6982	
				0.9201233
				3.4194601
				7.5006532

O.D. Engr's make this distance  
5287.06

N 21° 24' 20" W



O.D. Engr's make this distance  
5287.06



N 21° 24' 20" W  
9° 55'  
N 31° 19' 20" W  
13 06 30  
5X 18 12 50 W E  
108 23 30  
126 36 20  
179 59 60  
5X 18 23 40 E W  
53 08  
5 0° 15' 40 W 5 0° 11' 42 W  
2644.46  
7.68  
2652.14  
19 55  
2632.59

Station	Course	Dist	+ N	- S	Total N.	+ E	- W	Total E.	
N.W. cor. Globe Township					+ 1190.30			- 1535.51	
1) Point near Edge	S 21° 24' 20" E	2632.00		2450.50	- 1260.20	960.59		- 574.92	
2) Point on Top	S 1° 42' 50" E	848.47		848.09	- 2108.29	25.38		- 549.54	
3) S.E. cor. sec. 26	S. 47° 15' 10" W	168.26		114.07	- 2222.36		123.42	- 672.96	
4) Triangulation point X	N 0° 00' 10" E	81.10	81.10		- 2141.26	0.00		- 672.96	
N.W. cor. Globe Township					+ 1190.30			- 1535.51	
5) Triangulation pt. N 22 X	N 31° 19' 20" W	981.30	838.28		+ 2028.58	510.13	510.13	- 2045.64	
1)	9.9689592	9.5622537	2)	9.9998057	8.4757953	3)	9.8317195	9.8659063	1131 19 20" W
	3.4202859	3.4202859		2.9286365	2.9286365		2.2254644	2.2254644	
	3.3892451	2.9825396		2.9284422	1.4044318		2.0571839	2.0913707	
	2450.5	960.59		848.09	253.88		114.07	123.42	
4)	0.0000000	5.6855749	5)	9.9315887	9.7158784				
1)		1.9090209		2.9918018	2.9918018				
	81.10	- 3.5945958		2.9233905	2.7076802				
		0.0000		838.28	510.13				
		- 00							

107



Sec. 26

321.90  
660.91

		+ N	- S	N	+ E	- W	E
SE. cor.				-2222.36			-672.96
1) E 1/4 cor.	N. 0° 15' 10" E 2643.80	2643.80		+421.44	11.66		-661.30
2) N.E. Sec. cor.	N. 0° 15' 10" E 2643.80	2643.80		+3065.24	11.66		-649.64
3) N 1/4 cor. (O.D.)	S. 89° 45' W 2600.00		11.22	+3054.02		2600.00	-3249.64
SE. sec. cor.				-2222.36			-672.96
4) S 1/4 cor.	S. 89° 55' 10" W 2627.63		3.69	-2226.05		2627.60	-3300.56
5) SW. Sec. cor.	N. 88° 39' 20" W 2624.27	61.57		-2164.48		2623.50	-5924.06
6) W 1/4 cor.	N. 0° 06' E 2627.54	2627.50		+463.02	5.77		-5918.29
7) 9.9999958	7.6446149	3) 7.6349635		9.9999960			-672.96
3.4222286	3.4222286	3.4149733		3.4149733			11.66
3.4222244	1.0668435	1.0499368		3.4149693		2643.80	-661.30
2643.8	11.66	11.22		2600.00		2222.36	11.66
						+421.44	-649.64
4) 7.1479727	9.9999996	5) 8.3703804		9.9998804		2643.80	2600.00
3.4195593	3.4195593	3.4190135		3.4190135		+3065.24	-3249.64
0.5675320	3.4195589	1.7893939		3.4188939		11.22	
3.69	2627.6	61.57		2623.5		3054.02	-672.96
						-2222.36	2627.60
6) 9.9999993	7.2418771					3.69	-3300.56
3.4195427	3.4195427						2623.50
3.4195420	0.7614198					-2226.05	-5924.06
2627.5	5.77					61.57	5.77
						2164.48	
						2627.50	-5918.29
						+463.02	

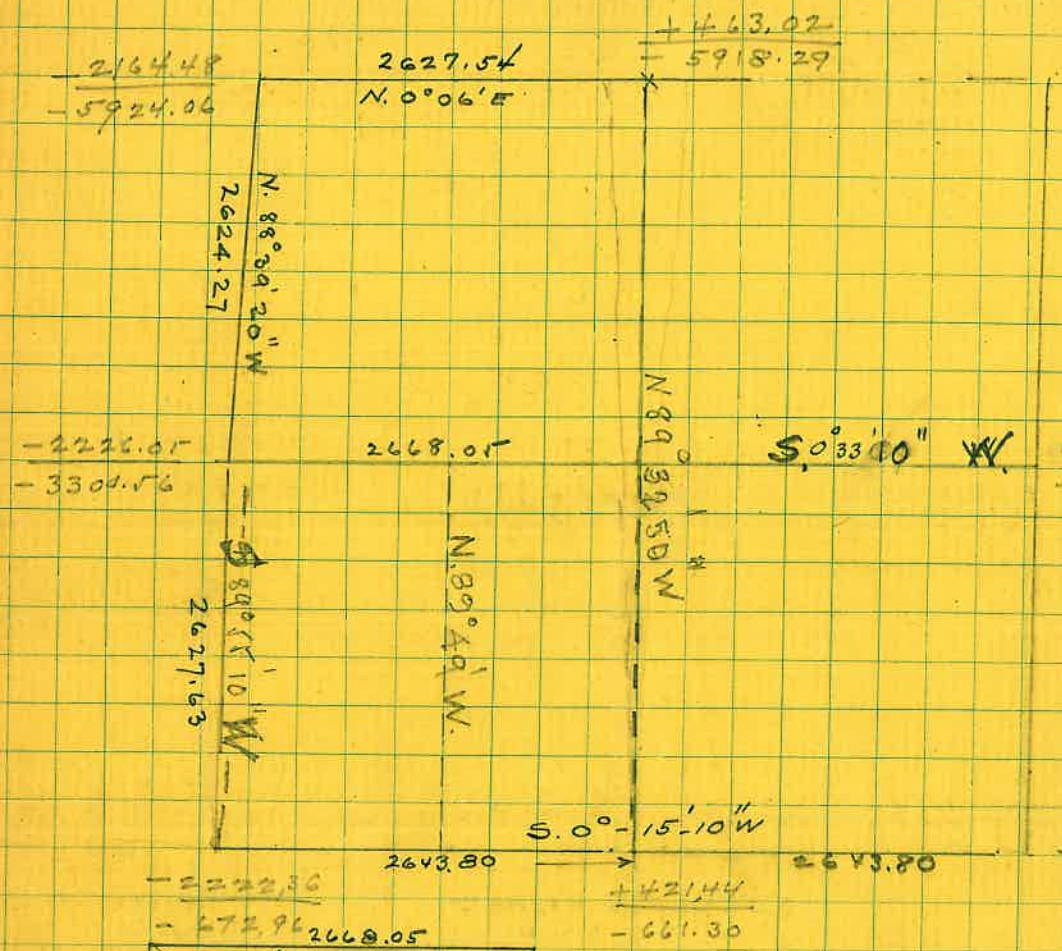
N 89° 55' 10" E  
89.22  
N 0° 33' 10" E



1.463.02



N 89° 55' 10" E  
 89 22  
 N 0° 33' 10" E



+ 3054.02  
 - 2226.05  
 5280.07

~~3300.56~~  
~~3249.64~~

+ 463.02  
 421.44  
 41.58

5918.29  
 661.30  
 2579.99

1. 6188845  
 3. 7207380  
 7. 8981465

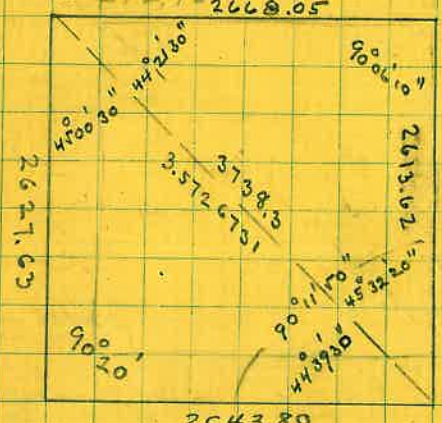
89 59 60  
 0  
 = 0 27 10

N 89° 32' 50" W

15 10  
 11 42  
 - 3.28

89 32 50  
 89 55 10  
 179 28 00  
 179 60 00  
 - 32

2610.87  
 2668.85  
 279.72



2643.80  
 2627.63  
 271.43 : 16.17 : 7.44.50 : X

89.40  
 44.50  
 01029  
 443930  
 45° 00' 30"

9.9974734  
 1.2087100  
 1.2061834  
 3.7219284  
 7.4842550 = 0° 10' 29"

- 2226.05  
 + 3054.02  
 5280.07

- 3300.56  
 - 3249.64  
 50.92

1.7068884  
 3.7226421  
 7.9842463

50° 33' 9" W

1.7068884  
 7.9842029  
 3.7126755 = 5160.30

90° 06' 10" : 45° 32' 20" = 3.5726731

45° 00' 30" : 90° 20' = 2643.80 : X

3.4222286  
 9.9999927  
 3.4222213  
 9.8495482  
 3.1726731

179.5960  
 45 32 20  
 134 27 40  
 67 13 50

3738.3  
 2613.62  
 N. 89° 33' W  
 S. 0° 15' 10" W  
 89 48 10  
 179 59 60  
 90 11 50  
 44 39 30  
 45° 32' 20"

0.3770260  
 3.0510367  
 3.4280627  
 3.8029037  
 9.6251590

67.13.50  
 225220  
 44 21 30"  
 90° 06' 10"

3.4262046  
 9.9999993  
 3.4262053  
 2668.10  
 1334.05

150  
 60



St.	Course	Dist	+ N	- S	+ E	- W	+
E 1/4 cor. Sec. 26							
1 Intersec. of townsite line	N 89° 49' W	48.52	0.16		- 900.46		- 667.13
2 W. cor. of lot 52	N 89° 49' W	51.85	0.16		- 900.30	48.52	- 715.65
3 300 ft pt.	N 89° 49' W	199.63	0.64		- 900.14	51.85	- 767.50
4 cor. w. 6. - N. G.L.	S. 86° 08' W	169.91		11.46	- 899.50	199.62	- 967.12
5 cor. w. 5 N. G.L.	N. 26° 41' W	13.45	12.02		- 910.96	169.52	- 1136.64
					- 898.94	6.04	- 1142.68
							89.49 4.03 93.52 179.40 586.08 W

W. cor. lot 2					- 900.14		- 767.50
6 S. cor. Ball ground	S. 11° 14' W	330.37		324.04	- 1224.18	- 64.06	- 831.86

1  

$$\begin{array}{r} 7.5051181 \\ 1.6859208 \\ - 9.1910389 \\ \hline 0.16 \end{array}$$

2  

$$\begin{array}{r} 7.5051181 \\ 1.9372671 \\ - 1.4423852 \\ \hline 0.28 \end{array}$$

3  

$$\begin{array}{r} 7.5051181 \\ 2.3002258 \\ - 1.8053439 \\ \hline 0.64 \end{array}$$

86.55: 51.66 = 68° 21' X

$$\begin{array}{r} 9.9684286 \\ 1.7131544 \\ 1.6815830 \\ 1.9372671 \\ 9.7443159 \end{array}$$

4  

$$\begin{array}{r} 8.8288844 \\ 2.2302189 \\ 1.0591033 \\ \hline 11.46 \end{array}$$

$$\begin{array}{r} 9.9990103 \\ 2.2302189 \\ 2.2292292 \\ \hline 169.52 \end{array}$$

$$\begin{array}{r} 9.9510956 \\ 1.1287223 \\ 1.0798179 \\ \hline 12.02 \end{array}$$

$$\begin{array}{r} 9.6523035 \\ 1.1287223 \\ 0.7810258 \\ \hline 6.04 \end{array}$$

$$\begin{array}{r} - 910.96 \\ - 1224.18 \\ \hline N 313.22 \end{array}$$

$$\begin{array}{r} - 1136.64 \\ - 831.86 \\ \hline W 304.78 \end{array}$$

42  

$$\begin{array}{r} 2.4839865 \\ 9.8434697 \\ 2.6405168 \\ \hline 437.03 \end{array}$$

N 44° 13' W.

6  

$$\begin{array}{r} 9.9915990 \\ 2.5190006 \\ 2.4105996 \\ \hline 324.04 \end{array}$$

$$\begin{array}{r} 9.2896001 \\ 2.5190006 \\ 1.8086007 \\ \hline 64.36 \end{array}$$

$$\begin{array}{r} 2.4839865 \\ 2.4958495 \\ 9.9881370 \\ \hline 12.30 \\ 106 \end{array}$$



	Course	Dist	+ N	- S	+ E	- W	+
300 ft. pt.				-899.50			-967.12
n=1.	N65°08'W	165.84	69.74	-829.76		150.46	-1117.58
				-899.50			-967.12
n=2	N37°54'W	157.04	123.92	-775.58		96.47	-1063.59
				-899.50			-967.12
n=3	N25°44'W	167.14	150.57	-748.93		72.57	-1039.69
				-899.50			-967.12
n=5	N79°55'W	195.62	34.25	-865.25		192.60	-1159.72

N<sub>3</sub> to J<sub>5</sub> =

1/ 9.6237743	9.9577456	2/ 9.8971233	9.7883701	3/ 9.9546402	9.6376731
2.2196893	2.2196893	2.1960103	2.1960103	2.2230804	2.2230804
1.8434636	2.1774349	2.0931336	1.9843804	2.1777206	1.8607535
69.74	150.46	123.92	96.47	150.57	72.57
1/ 9.2432374	9.9932396	-829.76	-1117.58	1/ 2. 829.76	1117.58
2.2914133	2.2914133	-865.25	-1159.72	-775.58	1063.59
1.5346507	2.2846529	35.49	42.14	N 54.18	53.99 E
34.25	192.60	6.40°06'20" W			

1/ 3 - 829.76  
 - 748.93  
 N 80.83

- 1117.58  
 - 1039.69  
 77.89 E

1-3 8914817  
 1.9075726  
 9.9839091

5-1 = 55.09  
 1-2 = 76.66  
 2-3 = 35.59  
 167.34

1-5  
 1.5501060  
 1.6246945  
 9.9254115

1-2 1.7323133  
 1.7338890  
 9.9984743  
 1.7323133  
 98487257  
 1.8835874  
 76.66

1.8914817  
 98412911  
 2.0501906

1.5501060  
 9.8090192  
 1.7410868

55.09

112.25  
 76.66  
 35.59

155



St	Course	Dist	N	S	E	W	Middle Dist	North Product	South Product
1.	S 11° 14' W	330.37		324.04		64.36	342.60		111016
2.	N 44° 13' W	437.03	313.23			304.77	157.86	49456	
3.	N 26° 41' W	13.45	11.98			6.02	3.01	36	
4.	S 87° 49' E	374.98		1.20	374.98		187.48		225
			325.21	325.24	374.98	375.15		49492	111241

32.18  
 - 32.18  
 000  
 - 152.38  
 - 304.77

61749 | 43560  
 43560 | 1.418  
 181890  
 174240  
 76500  
 43560  
 329400

1/ 9.9915990  
 2.5190006  
 2.5105996  
 324.04

9.2996001  
 2.5190006  
 1.8086007  
 64.36

2/ 9.8553421  
 2.6405113  
 2.4958534  
 313.23

9.8434655  
 2.6405113  
 2.4839768  
 304.77

3/ 9.9510976  
 1.1274288  
 1.0785244  
 11.98

9.6523035  
 1.1274288  
 0.7797323  
 6.02

4/ 7.5051181  
 2.5740081  
 0.0791262  
 1.20

9.9999978  
 2.5740081  
 2.1740019  
 374.98

~~324.04  
 32.18  
 2592.32  
 324.04  
 64808  
 972.12  
 10427.6072~~

~~313.23  
 152.38  
 250584  
 93969  
 62640  
 156615  
 31323  
 477299874~~

~~11.98  
 3.01  
 11.98  
 3194  
 360498~~

~~374.98  
 187.48  
 337.482  
 149992  
 262486  
 299984  
 37498  
 70305000~~

~~10138  
 15026  
 60829  
 50190  
 10138  
 18257928~~

2250

~~187.49  
 1.20  
 37498  
 18749  
 2249880~~

~~375  
 2250  
 375  
 112  
 750  
 2250  
 375  
 60750  
 2250  
 63000~~

~~37315.94  
 348480  
 246794  
 217800  
 289940  
 261360  
 285800~~

~~143560  
 0.8567~~

~~59040  
 2250  
 61290~~

375

~~369  
 160  
 22140  
 369  
 59040~~

321

4. - 187.48  
 187.48  
 374.96

middle dist. side 4  
 324.04  
 342.6  
 194424  
 64808

313.23  
 157.86  
 187938  
 250584

11.98  
 3.01  
 1.00

187.48  
 1.2



4. - 787.48 middle dist. side 4  
187.48  
 374.96  
 1. 32.36  
 342.60 — " " side 1  
32.36  
 2 310.24  
152.38  
 157.86 — " " side 2  
152.38  
 5.48  
3.01  
 2.47 — " " side 3  
3.01

324.04  
342.6  
 194424  
 64808  
 129616  
97212  
 111016104

513.23  
157.84  
 187938  
 250584  
 219261  
 156715  
31323  
 494564878

11.98  
3.01  
 11.98  
3594  
 360598

187.48  
12  
 37496  
18748  
 224976



	N	S	T. N	E	W	T. E	
			0 0			0 0	1/4 1/4 cor. on Ryan Property
1 N 71° 23' 30" E 62.36	19.91		19.91	59.10		59.10	to Pt. 5 in Road
2 S. 2° 02' 30" W 44.39		64.35	- 44.44		2.29	56.81	" 4 " "
3 S. 18° 13' E 61.24		58.17	- 102.61	19.14		75.95	" 3 " "
4 S 11° 26' 30" E 48.81		67.44	- 170.05	13.65		89.60	" 2 " "
5 S 4° 08' W 174.13		173.68	- 343.73		12.55	77.05	" 1 " N.W. cor. of main property - side of Rd.
6 S. 0° 10' E 112.15		112.15	- 455.88	0.33		77.38	" 0 " S.W. " " " " in Hastings Rd.
0			0 0			0 0	1/4 1/4 cor
1 N 71° 23' 30" E 62.36	19.91		19.91	59.10		59.10	" - 5 -
7 N. 13° 15' 30" E 55.59	54.11		74.02	12.75		71.85	" 6 -
16 N 18° 28' 30" E 77.81	73.80		147.82	24.66		96.51	
17 N 24° 29' E 125.50	114.22		262.04	52.00		148.51	
6 Orig. Loc. "			- 455.88			77.38	see book 13 - p. 31. -
8 N 68° 44' E 46.33	5.92		- 449.96	15.22		92.60	
9 N 4° 26' W 131.90	131.50		- 318.46		10.20	82.40	
10 N 4° 10' E 147.95	147.60		- 170.86	10.72		93.12	
11 N 11° 59' W 220.15	215.35		+ 44.49		45.71	47.41	
12 N 24° 51' E 251.40	228.10		+ 272.59	105.65		153.06	
00			0 0			0 0	
13 N 46° 32' E 64.56	44.41		44.41	46.86		46.86	to Pt. 500 - orig. loc. "
12 N 24° 51' E 251.40	228.10		272.51	105.65		152.51	
			+ 146.18			+ 190.41	NE cor. Ryan's lot. (Stewart's calculations)
14) N 19° 55' W. 52.18	49.06		+ 195.24		17.78	+ 172.63	S.E. cor lot 9 -
15) N 69° 58' W. 73.5	25.18		+ 220.42		69.05	+ 103.58	S.W. " " " (Distance copied from Q.D. map.)

1) 9,504,110.5    9,976,659.7  
 1,794,906.1    1,794,906.1  
 1,299,016.6    1,771,565.8

8) 9,559,558.5    9,969,370.4  
 1,212,986.2    1,212,986.2  
 0,772,544.7    1,182,356.6

16) 9,977,079.9    9,500,909.7  
 1,891,035.4    1,891,035.4  
 1,868,055.3    1,891,945.1  
 73.80    24.66



1) 9.5041105 9.9766597  
 1.7949061 1.7949061  
 1.2990166 1.7715658  
 19.91 59.10

2) 9.9997242 8.5517703  
 1.8088184 1.8088184  
 1.8084426 0.3605887  
 64.31 2.29

3) 9.9776693 9.4950046  
 1.7870352 1.7870352  
 1.7647045 1.2820398  
 58.17 19.14

4) 9.9912824 9.2974763  
 1.8376516 1.8376516  
 1.8289340 1.1351279  
 67.44 15.65

5) 9.9988689 8.8578010  
 2.2408736 2.2408736  
 2.2397425 1.0986746  
 173.68 12.55

6) 9.9999982 7.4637255  
 2.0497993 2.0497993  
 2.0497995 -1.135248  
 112.15 0.33

7) 9.9882672 9.3604835  
 1.7449967 1.7449967  
 1.7332639 1.104802  
 54.11 12.75

215.35 0.75 69.57 60  
 74.02 74.02 27.24 20  
 141.33 73.27 42.33 40

1.8649262  
 2.1502344  
 9.7146918 N. 27 24 20 W  
 1.8649262  
 9.6630276

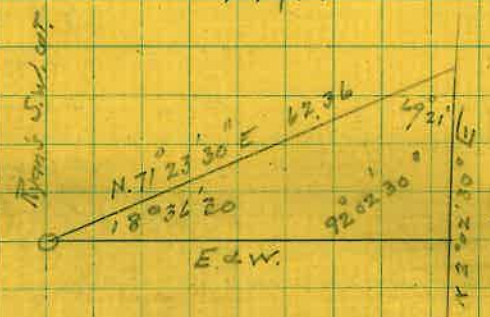
2.2018986  
 159.18

8) 9.5595585 9.9693704  
 1.2129862 1.2129862  
 0.7725447 1.1823566  
 5.92 15.22

Old field  
 00 + 00

+ 1245.10 + 94.43

13) 9.8375458 9.8608018  
 1.8099635 1.8099635  
 1.6475093 1.6707653  
 44.41 46.86



272.50 153.30  
 74.02 71.85  
 198.50 81.45

1.9108911  
 2.2978261  
 9.6130650 = 22 18 30 87 43 30 : 42 33 40 =

1.9108911  
 9.5793156  
 2.3315755

11.69 58 W  
 5 22 18 30 W  
 92 16 30  
 179 49 60  
 87 43 30

27 24 20  
 22 18 30  
 49 42 50  
 87 43 30  
 42 33 40  
 180 00 00

16) 9.9770199 9.5009097  
 1.8910354 1.8910354  
 1.8680553 1.8919451  
 73.80 24.66

17) 9.9590805 9.6174496  
 2.0986437 2.0986437  
 2.0577242 1.7160933  
 114.22 52.10

71 23 30  
 2 02 30  
 69 21  
 18 36 30  
 92 02 30  
 180

92 02 30 : 69 21 = 62.36 : X  
 92 02 30 : 18 36 30 = 62.34 : X

1.7949061  
 9.9711608  
 1.7660667  
 9.9997242  
 1.7663427 58.39

14) 9.9732152 9.5323123  
 1.7175041 1.7175041  
 1.6907193 1.2498164  
 49.06 17.78

1.7949061  
 9.5039229  
 1.2988290  
 9.9997242  
 1.2991048 = 19.92

15) 9.5347452 9.9728938  
 1.8662873 1.8662873  
 1.4010325 1.8391811  
 21.18 69.05

2.2018986 : X  
 9.8301883

2.0320869  
 9.9996576  
 2.0324293  
 107.75

87 43 30 : 49 42 50 =  
 2.2018986  
 9.8824250

2.0843236  
 9.9996576  
 2.0846660

121.52

159



Oldfield's 1<sup>st</sup> prepared R.O.W.

Byerly Street

140

	N	S	E	W
			- 343.73	+ 77.05
16) N. 8° 12' W	105.44	104.49	- 239.33	14.75 + 62.30
17) N. 68° 19' E	27.47	10.15	- 229.18	25.53 + 87.83
18) S. 8° 12' E	105.40	104.32	333.50	15.03 + 102.86
19) S. 68° 44' W	27.77	10.26	343.76	25.81 77.05
	114.55	114.58	140.56	140.56

N=1 - NW cor. of Marich Property  
= S.W. cor. of Oldfield deed to City.

Oldfield's 2<sup>nd</sup> prepared R.O.W.

			- 343.73	+ 77.05
20) N 0° 07' 30" W	110.00	110.00	- 233.73	0.24 76.81
21) N. 68° 19' E	11.94	4.41	- 229.32	11.09 87.90
22) S. 8° 12' E	105.40	104.32	333.64	15.03 102.93
23) S. 68° 44' W	27.77	10.07	- 343.71	25.88 77.05
	114.41	114.39	26.12	26.12

N=1 - NW cor. Marich's Property.

Meander of Byerly Street across ground owned by O.P. Company.

			- 229.32	87.90
24) S. 68° 19' W	16.24	6.04	- 235.36	15.18 72.72
25) N 1° 38' 30" E	64.05	64.02	- 171.34	1.83 74.55
26) N. 11° 26' 30" W	66.21	64.89	- 106.45	13.12 61.42
27) N 18° 13' W	63.04	59.88	- 46.57	19.71 41.71
28) N. 2° 02' 30" E	46.63	46.60	- 00.00	1.66 43.37
29) E	30.00	00	000	30.00 73.37
30) S. 2° 02' 30" W	42.31	42.28	- 42.28	1.51 71.86
31) S. 18° 13' E	59.44	56.46	- 98.74	18.58 90.44
32) S. 11° 26' 30" E	71.41	69.99	- 168.73	14.17 104.61
33) S 1° 38' 30" W	61.02	61.00	- 429.73	1.95 102.86
34) S. 68° 19' W	104.32	104.32	- 334.05	104.86
35) N. 8° 12' W	105.40	104.32	- 229.73	15.03 117.89
	339.71	340.09	66.44	66.31

1030  
1x197

16)	9.9957083	9.1457966	- 343.73	+ 77.05	20) 9.9999999	7.3387870
	2.0229954	2.0229954	N 10.26	E 25.81		2.0414242
			- 333.47	102.86		
			104.32	15.03		
					110.00	- 1.3802112



16)  $9.9957083$   $9.1457966$   $- 343.73$   $+ 77.05$   
 $2.0229954$   $2.0229954$   $N 10.26$   $E 25.81$   
 $2.0187037$   $1.1687920$   $333.47$   $102.86$   
 $104.40$   $14.21$   $104.32$   $15.03$   
 $17)$   $9.5675868$   $9.9681279$   $- 229.15$   $+ 87.83$   
 $1.4388587$   $1.4388587$   $16.15$   $20.53$   
 $1.0064455$   $1.4069866$   $- 239.30$   $+ 62.30$   
 $101.52$   $25.53$   $104.43$   $14.75$   
 $18)$   $9.9955370$   $9.1542076$   $1.1687920$   
 $2.0228406$   $2.0228406$   $2.0188213$   
 $2.0183776$   $1.1770482$   $9.1499667$   $8^{\circ} 2' 30''$   
 $104.32$   $15.03$   
 $19)$   $9.5675868$   $9.9681279$   $1.1687920$   
 $1.4435759$   $1.4435759$   $9.1457966$   $105^{\circ} 44'$   
 $1.0111627$   $1.4117038$   $2.0229954$   
 $10.26$   $25.81$   
 $- 343.73$   $+ 77.05$   $24)$   $9.5675868$   $9.9681279$   
 $N 10.07$   $E 25.88$   $1.2132521$   $1.2132521$   
 $- 333.66$   $+ 102.93$   $0.7808389$   $1.1810800$   
 $N 104.32$   $W 15.03$   $80.47$   $12.12$   
 $- 229.34$   $+ 87.90$   $25)$   $9.9998217$   $8.4571029$   
 $S 4.41$   $W 11.09$   $1.8065191$   $1.8065191$   
 $- 233.75$   $76.81$   $1.8063408$   $0.2636220$   
 $343.73$   $77.05$   $64.03$   $1.83$   
 $109.98$   $0.24$   $26)$   $9.9912824$   $9.2974763$   
 $- 1.3802112$   $+ 76.81$   $1.8209236$   $1.8209236$   
 $2.0413137$   $77.05$   $1.8122060$   $1.1183999$   
 $7.3388975 = 0^{\circ} 7' 30''$   $13.13$   
 $- 1.3802112$   $0.24$   $27)$   $9.9776693$   $9.4950046$   
 $7.3387870$   $0.24$   $1.7996162$   $1.7996162$   
 $2.0414242 = 110.00$   $1.7772855$   $1.2946208$   
 $59.88$   $19.71$   
 $28)$   $9.9997242$   $8.5517703$   
 $1.6686654$   $1.6686654$   
 $1.6683896$   $0.2204357$   
 $46.60$   $1.66$   
 $0.00$   $20.00$   
 $29)$   $9.9997242$   $8.5517703$   
 $1.6264430$   $1.6264430$   
 $1.6261672$   $0.1782133$   
 $42.28$   $1.51$   
 $30)$   $9.9776693$   $9.4950046$   
 $1.7740788$   $1.7740788$   
 $1.7517481$   $1.2690834$   
 $56.46$   $18.58$

20)  $9.9999999$   $7.3387870$   
 $2.0414242$   
 $110.00$   $- 1.3802112$   
 $0.24$   
 $21)$   $9.5675868$   $9.9681279$   
 $1.0770043$   $1.0770043$   
 $0.6444911$   $1.0451022$   
 $4.41$   $11.09$   
 $22)$   $9.9955370$   $9.1542076$   
 $2.0228406$   $2.0228406$   
 $2.0183776$   $1.1770482$   
 $104.32$   $15.03$   
 $23)$   $9.5595585$   $9.9693704$   $9.641$   
 $1.4435759$   $1.4435759$   
 $1.0031344$   $1.4129423$   
 $10.07$   $25.88$   
 $9.5595585$   $9.9693704$   $343.73$   
 $0.9843022$   $0.9843022$   $3.5$   
 $0.5438607$   $0.9536726$   $340.23$   
 $3.5$   $9.00$   $17.08$   
 $86.08$   
 $33)$   $9.9998217$   $8.4571029$   
 $1.7854722$   $1.7854722$   
 $1.7852939$   $0.2425811$   
 $61.00$   $1.75$   
 $34)$  South  
 $104.32$   
 $35)$   $9.9955370$   $9.1542076$   
 $2.0228406$   $2.0228406$   
 $2.0183776$   $1.1770482$   
 $104.32$   $15.03$   
 $36)$   $9.9912824$   $9.2974763$   
 $1.8537190$   $1.8537190$   
 $1.8450414$   $1.1512353$   
 $69.99$   $14.17$

1101







N 24 29 E	30.73	27.97	147.82		96.51
549.58 W	86.45		175.79	12.74	109.25
N 19 55 W	123.19	110.82	29.62	146.17	81.22
			261.99		41.97
					148.50

N 84 20 50 E	139.82	10.77	74.02		71.85
			87.99	139.14	210.99

272.55	153.30
147.82	96.51
124.73	56.79

215.35	0.75
147.82	96.51
67.53	95.76

9.9590805	9.6174496
1.4875626	1.4875626
1.4466431	1.1050122

1.7542719	
2.0959709	
9.6583010	24° 28' 50"
1.7542719	
9.6173934	
2.1368785	137.05

1.8294967	
1.9811841	89° 57' 45"
9.8483126	35° 11' 39"
1.8294967	04° 48' 30"
9.7606088	
2.0688379	117.18

27.97	12.76
9.5347452	9.9728938
1.9867650	1.9867650
1.4715102	1.9096588
29.62	81.22

215.35	0.75
74.02	71.85
141.33	71.10

85° 33' : 15° 09' 30" = 2.0688379 : X  
 85° 33' : 79° 17' 30" = 9.4174506

1.8518696	
2.1502344	
9.7016302	264220
1.8518696	
9.6526385	
2.1992311	158.21

9.9732152	9.1323123
2.0900700	2.0900700
2.0637907	1.6228878
115.82	41.97

1.4862885	2.0688379 : X
9.9986888	9.9923705
487.997	2.0612084
30.73	9.9986888
8.9934345	2.0625196
2.1455693	115.47
1.1390038	9.9978829
13.77	2.1455693
	2.1434022
	139.14

143



		+N	-S		+E	-W
				0 0		0 0
1	E	43.38	00	00	43.38	43.38
2	N.2°02'30" E	21.92	21.91		0.78	
3	N.13°15'20" E	57.74	56.90		13.24	
4	N.18°28'30" E	77.81	73.80		24.66	
5	N.24°29' E	30.35	27.56		12.58	
6	S.69°58' E	30.03	10.29		28.21	
7	S.24°29' W	31.11	28.31		12.89	
8	S.18°28'30" W	76.14	72.22		24.13	
9	S.13°15'30" W	53.44	52.01		12.26	
10	S.2°02'30" W	17.92	17.91		0.64	
11	W.	30.02			30.02	
		179.47	180.94		79.47	79.94

Sw. cor. Rat 10 in Lot 2

2	9.9997242 ✓	8.5517703 ✓	7	9.9590805 ✓	9.6174496 ✓
	1.3408405 ✓	1.3408405 ✓		1.4929000 ✓	1.4929000 ✓
	1.3405647 ✓	-1.8926108 ✓		1.4519805 ✓	1.1103496 ✓
	21.91 X	0.78 X		28.31	12.89 X
3	9.9882672 ✓	9.3604835 ✓	8	9.9770199 ✓	9.5009097 ✓
	1.7614768 ✓	1.7614768 ✓		1.8816129 ✓	1.8816129 ✓
	1.7497440 ✓	1.1219603 ✓		1.8886328 ✓	1.3821226 ✓
	56.20 X	13.24 X		72.22 X	24.13 X
4	9.9770199 ✓	9.5009097 ✓	9	9.9882672 ✓	9.3604835 ✓
	1.8910354 ✓	1.8910354 ✓		1.7278664 ✓	1.7278664 ✓
	1.8680553 ✓	1.3919461 ✓		1.7161336 ✓	1.0883499 ✓
	73.80 X	24.66 X		52.01 X	12.26 X
5	9.9590805 ✓	9.6174496 ✓	10	9.9997242 ✓	8.5517703 ✓
	1.4821587 ✓	1.4821587 ✓		1.2533380 ✓	1.2533380 ✓
	1.4412392 ✓	1.0996083 ✓		1.2530622 ✓	-1.8051083 ✓
	27.56	12.58		17.91 X	0.64 X
6	9.9728938 ✓	9.9728938 ✓	11		30.02
	1.4929000 ✓	1.4929000 ✓			

	N	S	T. N	E	W	T. E
East	48.39	-	00	48.39		



	N	N	S	T. N	E	W	T. E
East	48.39	—	—	90	48.39		
1							
2 N. 2° 02' 30" E	21.26	21.25			0.76		
3 N. 13° 15' 30" E	57.03	55.51			13.08		
4 N. 18° 28' 30" E	78.79	74.73			24.97		
5 N. 24° 29' E	30.47	27.73			12.63		
6 S. 69° 58' E	20.02		6.86		18.81		
7 S. 24° 29' W.	30.99		28.21			12.84	
8 S. 18° 28' 30" W.	76.83		72.87			24.35	
9 S. 13° 15' 30" W.	54.15		52.71			12.42	
10 S. 2° 02' 30" W.	18.58		18.57			0.66	
11 West	20.00					20.00	

179.22      179.22      70.21      70.21

2) 9.9997242 1.3275633 1.3272875 21.25	8.5517703 1.3275633 -1.8793336 0.76	7) 9.9590805 1.4912216 1.4503021 28.21	9.6174496 1.4912216 1.1086712 12.84
3) 9.9882672 1.7161034 1.7443706 55.51	9.3604835 1.7161034 1.1165869 13.08	8) 9.9770199 1.8855308 1.8625507 72.87	9.5009097 1.8855308 1.3861405 24.35
4) 9.9770199 1.8964711 1.8734910 74.73	9.5009097 1.8964711 1.3973808 24.97	9) 9.9882672 1.7335985 1.7218657 52.71	9.3604835 1.7335985 1.0940820 12.42
5) 9.9590805 1.4838725 1.4429530 27.73	9.6174496 1.4838725 1.1013221 12.63	10) 9.9997242 1.2690457 1.2687699 18.57	8.5517703 1.2690457 -1.8208160 0.66
6) 9.5347452 1.3014641 0.8362093 6.86	9.9728938 1.3014641 1.2743579 18.81		



Ryan's Tract - Ground W. of Reynolds St.

	+	-	+	-	+
1 N 12' E	215.33	215.33		0.75	
2 S 69° 58' E	105.48	36.23		99.12	
3 S 24° 29' W	30.47	27.73			12.63
4 S 18° 28' 30" W	78.79	74.73			24.97
5 S 13° 15' 30" W	57.03	55.51			13.08
6 S. 2° 02' 30" W	21.26	21.25			0.76
7 West	48.29				48.39
		211.31		99.85	99.83

Ryan's Tract - Ground E. of Reynolds St.

	+	-	+	-	+
8 East	68.89			68.39	
9 N. 2° 02' 30" E	18.58	18.57		0.66	
10 N. 13° 15' 30" E	54.15	52.71		12.42	
11 N 18° 28' 30" E	76.83	72.87		24.35	
12 N 24° 29' E	30.99	28.91		12.84	
13 S. 69° 58' E	76.42	26.18		71.80	
14 S 19° 55' E	61.90	58.20		21.09	
15 S 18° 29' W	92.79	88.00			29.42
West	113.61				113.61
	172.36	172.38		143.16	140.00

1) 9.9999974	7.5429065	13) 9.5347452	9.9728938
2.3331045	2.3331045	1.8832070	1.8832070
23331019	-1.8760111	1.4179522	1.8561008
215.33	0.75	26.18	71.80
2) 9.5347452	9.9728938	14) 9.9732152	9.5323123
2.0231701	2.0231701	1.7916906	1.7916906
1.0179153	1.9960639	1.7649058	1.3240029
3013	58.20	58.20	21.09
3) 9.9590805	9.6174496	15) 9.9769988	9.5010987
1.4838725	1.4838725	1.9675012	1.9675012
1.4429530	1.1013221	1.9445000	1.4685999
27.73	12.63	88.00	29.42

4) 9.9770199	9.5009097
1.8964711	1.8964711
1.8734910	1.3973808
74.73	24.97

182  
5839  
11361



$\begin{array}{r} 1.8964711 \\ 1.8964711 \\ \hline 1.3973808 \\ 24.97 \end{array}$

$\begin{array}{r} 9.9882672 \\ 1.7561034 \\ 1.7443706 \\ \hline 55.51 \end{array}$

$\begin{array}{r} 9.9997242 \\ 1.3275633 \\ 1.3272875 \\ \hline 21.25 \end{array}$

7 West

8 East

$\begin{array}{r} 9.9997242 \\ 1.2690457 \\ 1.2687699 \\ \hline 18.57 \end{array}$

$\begin{array}{r} 9.9882672 \\ 1.7335985 \\ 1.7218607 \\ \hline 52.77 \end{array}$

$\begin{array}{r} 9.9770199 \\ 1.8955308 \\ 1.8625507 \\ \hline 72.87 \end{array}$

$\begin{array}{r} 9.9590805 \\ 1.45 \\ 1.3021 \\ \hline 25.20 \end{array}$

167