

DEERZGEN

ENGINEERS

FIELD BOOK

No. 103

110

INDEX-1

E+W STREETS.

| | Page |
|--------------------------|-------|
| South + Fagan | 13-14 |
| " " 2 nd | 13-14 |
| " " 3 rd | 15 |
| " " 5 th | 15 |
| " " 6 th | 15 |
| " " 7 th | 17 |
| Monroe + 2 nd | 17 |
| Monroe + 3 rd | 17 |
| " + 4 th | 17 |
| " + 5 th | 19 |
| " + 6 th | 19-20 |
| " + 7 th | 19-20 |
| Ash and High | 21 |
| " " East St | 21 |
| " " Parker | 21 |
| " " 2 nd | 23 |
| " " 3 rd | 23 |
| " " 4 th | 23 |
| " " 5 th | 25 |
| " " 6 th | 25 |
| " " 7 th | 25 |
| Maple & Sutherland | 25 |
| " " Reverend | 27 |
| " " High | 27 |
| " " East St | 27 |
| " " Hill St | - 26 |

INDEX-2

Page

| | |
|---|-----|
| 4 th Prop. Line BK 90, Broad St. | 82 |
| near Mon #3 | 84 |
| Mon. at Hackney St. | 86 |
| Lot. cor Willow & Hackney | 96 |
| Mesquite & Fifth | 98 |
| 10 th pt Hackney & Willow | 99 |
| Euclid & Townsite line | 100 |
| PINAL & " " | 101 |
| Blake St. & Sec. line | |

| | page |
|------------------------------|----------|
| Maple Exp 1 st St | 27 |
| " " Parker | 29 |
| " " 2 nd St. | 29 |
| " " 3 rd St. | 29 |
| " " 4 th St | 29 |
| " " 5 th " | 31 |
| " " 6 th " | 31 |
| Cottonwood and Sutherland | 31 |
| " " Devereux | 31 |
| " " High | 33 |
| " " East St. | 33 |
| " " 1 st St. | 33 |
| " " 2 nd St. | 35 |
| " " 3 rd St. | 35 |
| " " 4 th St. | 34 |
| Aycamore + Sutherland | 35 |
| " " Brood | 36 |
| " " Devereux | 35 |
| " " High | 37 |
| " " East St | 37 |
| " " 1 st St | 37 |
| " " 2 nd St. | 39 |
| " " 3 rd St | 39 |
| " " 4 th St | 39 |
| Oak + Sutherland | 41 |
| " " Devereux | 41 |
| " " High | 41-42-46 |
| " " East St | 43-44 |

Cottonwood + S. Brood page 32.

INDEX-5

| | | Page |
|----------|-----------------------|-----------|
| Oak and | 3 rd st | 44 |
| " | " 1 st st | 43 |
| " | " 4 th st | 96- 43-44 |
| " | " 5 th st | 43 |
| Cedar | " Sutherland | 45 |
| " | " Devereux | 45 |
| " | " High st | 46 |
| " | " East st | 45 |
| " | " 1 st st | 47 |
| " | " 4 th st | 47 |
| " | " 3 rd st | 48 |
| mesquite | + Sutherland | 47 |
| " | " Broad | 48 |
| " | " Devereux | 47 |
| " | " High | 49 |
| " | " East | 49 |
| " | " 1 st | 49 |
| " | " 4 th | 49 |
| Baily | " Sutherland | 51-51 |
| " | " Hill st | 52 |
| " | " Devereux | 51 |
| " | " East st | 51 |
| " | " 1 st st. | 51 |
| " | " 4 th st. | 53 |
| " | " 6 th st. | 53 |
| Kline | " Devereux | 53 |
| " | " High st | 54 |
| " | " 1 st st | 53-54 |
| " | " 4 th | 55 |
| Apache | + Sutherland | 55 |
| " | " Devereux st | 57 |

INDEX-6

Cedar and Broad - pg. 46
 " " Pine - " 48

Baily & Willow Page 76

INDEX-7

| | | |
|-----------|----------------|-------|
| Apache | High | 57 |
| " | East | 57 |
| " | 1st St | 57 |
| " | 4th | 57 |
| Tonto | Sutherland | 59 |
| " | Devereux | 59 60 |
| " | High | 59 |
| " | 1st St | 59 |
| " | 4th St. | 59 |
| Yuma | Hill St. | 61 |
| " | Broad | 61 62 |
| " | Devereux | 61 |
| " | High | 61 |
| " | 1st St. | 61 |
| " | 2nd St. | 61 |
| " | 3rd St. | 63 |
| " | 4th St. | 63 |
| Mojave | and High | 63 |
| Mesa | " " | 63 |
| North | and Sutherland | 65 |
| " | Devereux | 65 |
| " | High | 65 |
| " | East St. | 67 |
| Josephine | 8 6th | 94 |
| Sec. cor | 25/27 | 90 |
| | 36/34 | |

- Payer

INDEX-8

| From | To | Beg. | Dist. |
|------------|------|-------------------------|--------------------|
| D-6 | | | |
| | D-10 | N 64-26-32 E | 1802.64 |
| D-7 = C-57 | | | |
| | D-8 | N 28-26-27 W | 2536.06 |
| | D-9 | N 87-15-37 W | 3712.68 |
| | D-10 | S 48-38-12 W | 2879.46 |
| | C-58 | N 66-39-37 E | 2057.98 |
| D-8 | | | |
| | C-9 | S 50-37-15 W | 3235.12 |
| D-9 | | | |
| D-10 | | | |
| D-11 | | | |
| | D-3 | S 11-31-41 E. | 1731.85 |
| | D-14 | N 61-39-41 E. | 1543.68 |
| D-12 | | | |
| | D-1 | S 41-05-00 E. | 1388.35 |
| D-14 | | | |
| | D-2 | S 10-32-54 W | 1105.74 |
| C-9 | | | |
| | C-10 | S 36-40-21 E. | |
| | | S 36-38-29 E | 2592.65 |
| | | S 18-32-41 E | 4729.45 |
| | C-6 | S 18-30-49 E | 4729.48 |
| C-10 | | | |
| | C-6 | S 1-03-15 W | 2404.80 |
| | | S 1-05-07 W | 2404.86 |
| C-58 | | | |
| | D-4 | N 18-53-23 W | 1318.07 |
| C-6 | | | |

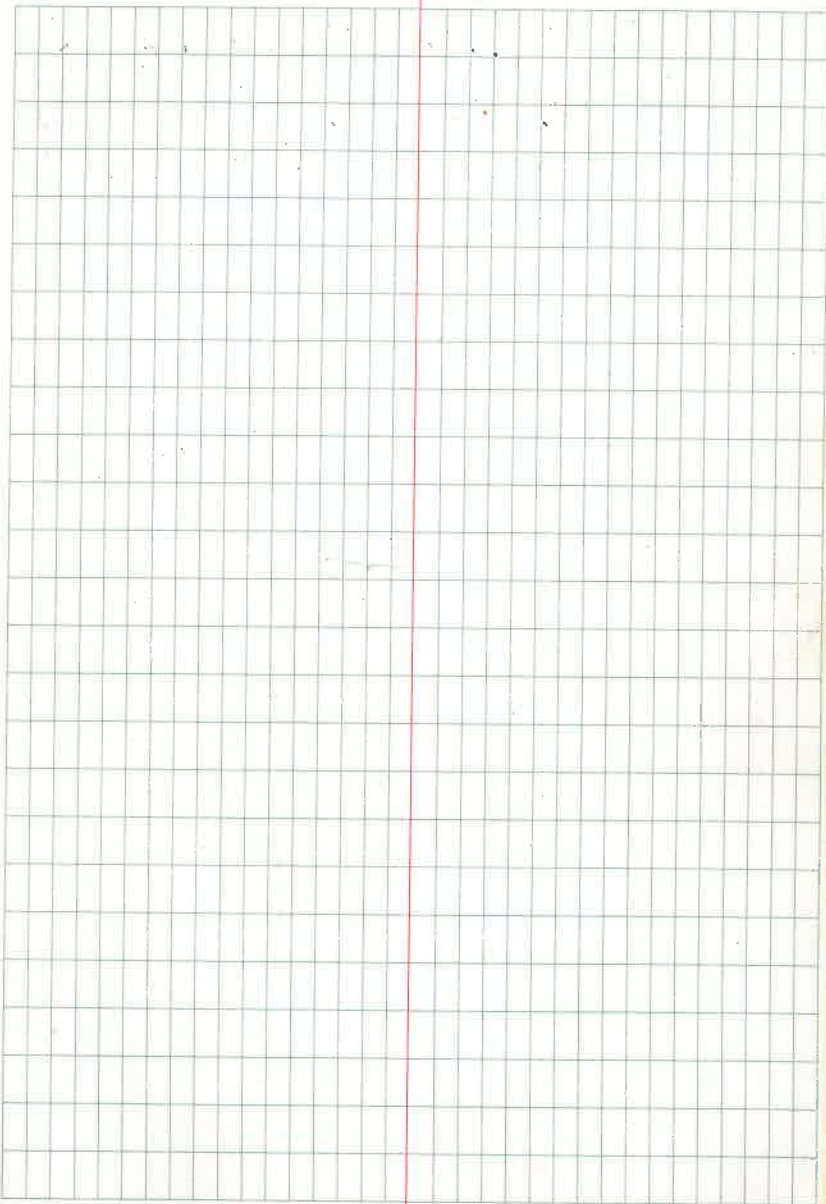
| N. | E. | ELEV. |
|---------------------|---------------------|--------------------|
| 16607.90 | 16336.26 | |
| 14501.91 | 14048.31 | I.C.C. Co. Record. |
| 14503.32 | 14045.40 | |
| 16733.20 | 12837.60 | |
| 18606.97 | 15516.94 | |
| 17385.60 | 17962.51 | |
| 19924.29 | 13410.54 | |
| 18965.80 | 13943.21 | |
| 20657.05 | 14769.22 | |
| 14676.59 | 10335.89 | I.C.C. Co. Record |
| 14680.68 | 10336.96 | |
| 12596.91 | 11884.27 | |
| 12600.38 | 11884.26 | |
| 15318.55 | 15934.98 | |
| 10192.71 | 11840.07 | |
| 10195.95 | 11839.71 | |

S. Broad St. Baseline and
S. line Globe Tumor site 69

S. Broad + Sycamore 70
S. " + Cottonwood 70

N. Broad + Euclid 62
" " Wm. No. 1 74
" " " " 2 74
" " " " 3 75

Willow + Euclid 80



11

Center NE $\frac{1}{4}$ Sec

97

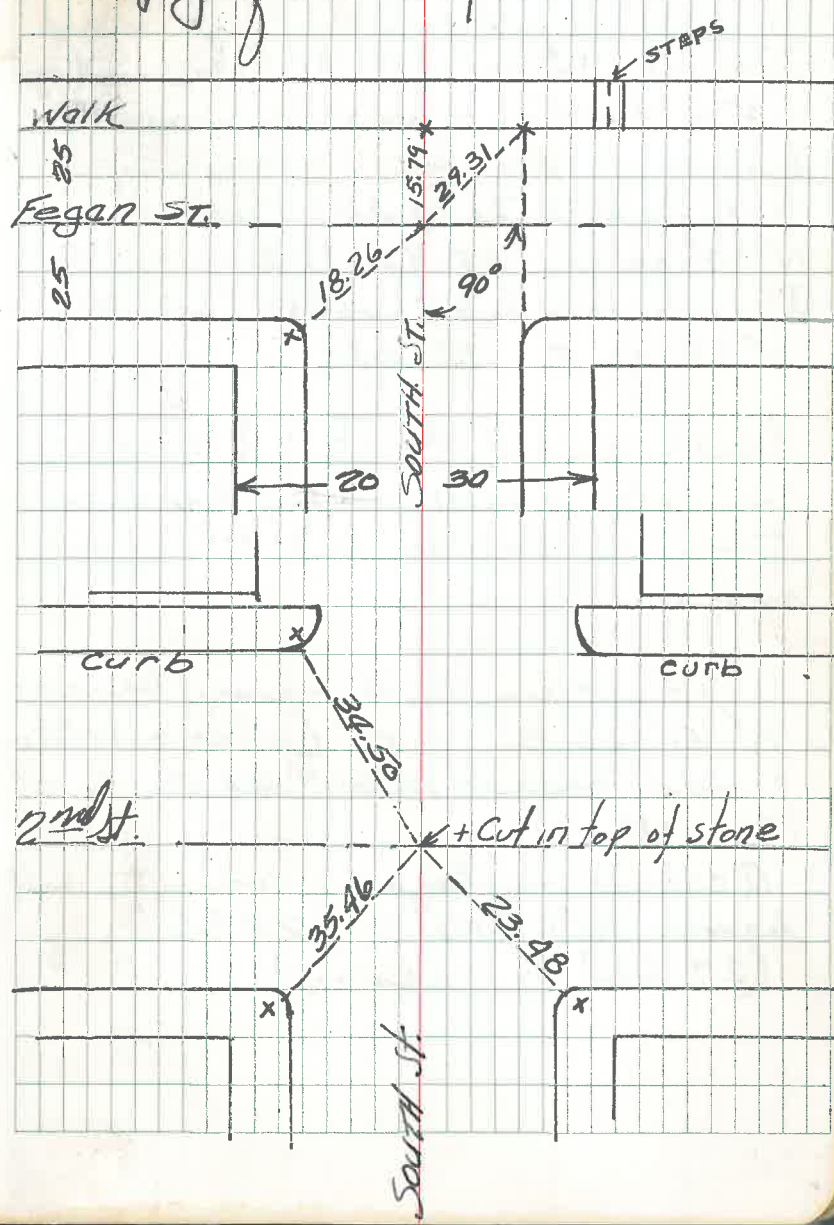
12

The right page of the notebook features a grid of graph paper. The grid consists of 20 columns and 20 rows of small squares. A vertical red margin line is positioned on the left side of the grid, approximately one-fifth of the way across the page. The grid is otherwise empty.

South and Fegan streets

South of 2nd St.
Frankner

Copy of this by Frankner



South of 3rd St. (Stewart)

Dacite stone - drill hole in top - set at the time of executing Townsite survey.

Across on side walk curb bears N 67° 04' W, 32.92 feet.

Across on side walk curb bears N 23° 32' E 33.68'

South and 5th St. (Stewart)

Concrete block with brass tube in center set 8" below surface.

Across in N.H. run bears N 67° 42' E 1.72' (also another cross bears N 67° 42' E, 3.00' (Faulkner))

Across on top of concrete wall bears N 67° 42' E 29.66' (29.62' Faulkner)

South of 6th St. (Stewart)

Brass tube in concrete pavement corner of angle of iron fast on top of concrete wall bears N 67° 01' W. 43.22'

South and 7th St. (Stewart)

Dacite Stone. Drill hole in top set at time of executing survey of Townsite. No bearings available.

Monroe and 2nd St. (Stewart)

Point on M.H. lid. A cross, on M.H. rim bears S 22° 18' E 1.75'.

A cross on M.H. rim bears N 22° 18' W 0.40 ft.

A cross on side walk curb bears N 22° 14' E 33.44 ft.

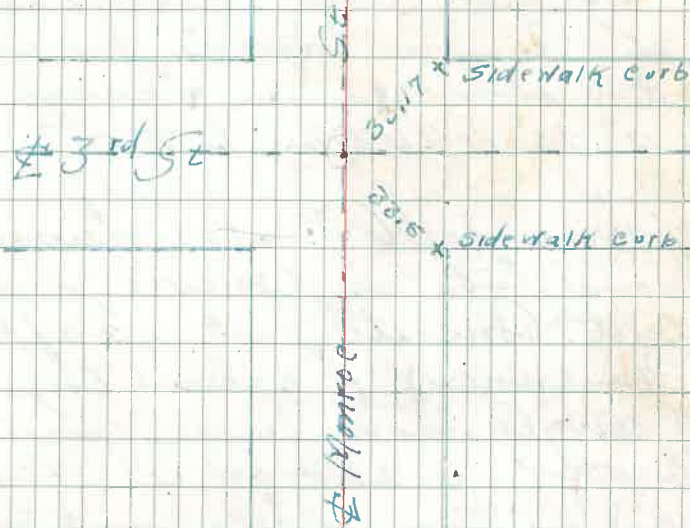
A cross on side walk curb bears S 67° 38' E 33.60 ft.

Monroe and 4th St.

Brass tube in concrete pavement. Cross on side walk curb bears N 23° 32' E ~~33.01~~^{33.19} ft. Cross on sidewalk curb bears N 67° 45' W ~~33.11~~^{33.56} ft. Cross on M.H. rim bears S 67° 42' W ~~4.97~~^{4.31} ft.

Monroe and 3rd St.

Fe comes on Manhole lid
+ on manhole rim N 67° 42' E 1.03
+ on manhole rim S 67° 42' W 1.63
+ on manhole rim S 22° 18' E .36
+ on manhole rim N 22° 18' W 1.80



Found brass tube
& corrected ties
20-Dec-62 P.H.J.
W. & E. Consult. Eng.

Monroe and 5th St. (Jede Stewart)

Point on M.H. lid.

Cross on M.H. rim bears

N 22° 18' W, 1.30 ft.

Cross on M.H. rim bears S 22° 18' E, 0.25'

" " side walk curb S 72° 58' E

38.26' Cross on Concrete fence

post 4" above ground bears

S 22° 23' W, 42.92 feet.

Monroe and 6th St. (Stewart)

Bronze tube in Concrete pavement. Concrete post 40.0 ft.

(Frankner) 1" below top

of angle iron fence post

bears S 23° 00' W 42.95'

nail in line in tele. post pole

to N.W. 34.65

Nail in power pole to NE

8" above ground with

tin washer 32.12 ft.

(See Page 19 Book 109)

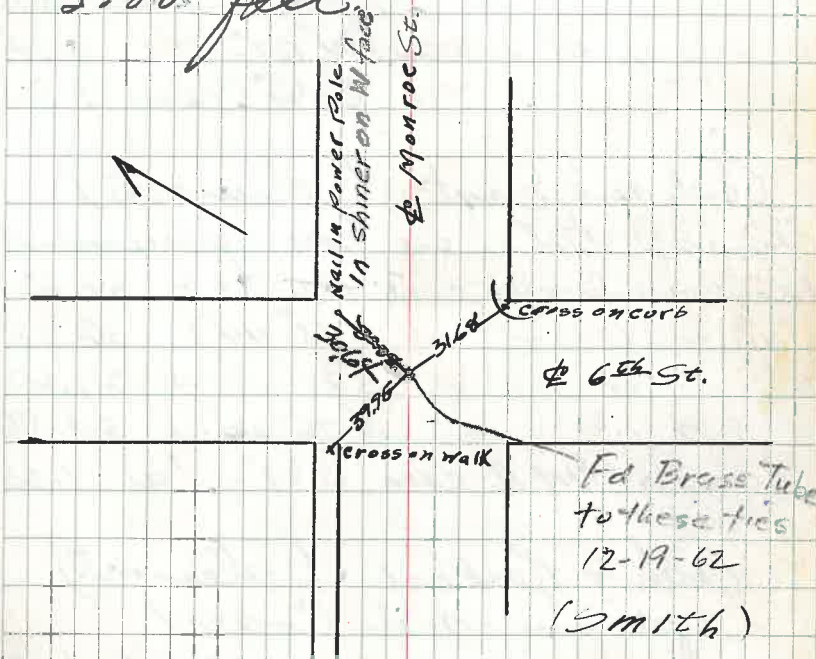
Monroe and 7th St. (Stewart)

Bronze tube in Concrete

block 8" below surface

Ground of stone N 22° 18' W

3.00 feet



21
Ash and Hight (Stewart)

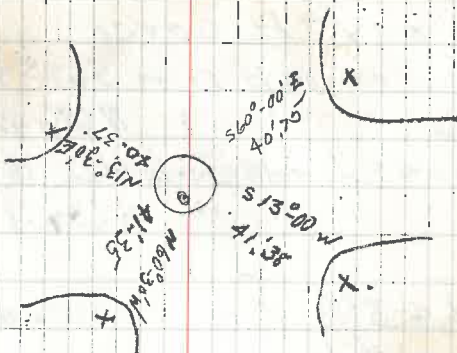
Point falls on M.H. lid
 Cross of ^{side w} curb bears N 21° 41' E 30.04'
 " " " " S 24° 41' W 29.88'
 " " " " N 77° 17' W 35.12'
 Cross on M.H. rim N 67° 42' E 0.34'
 " " " " S 67° 42' W 1.865'

Ash and East (Stewart)

Brass tube in Con-pavement
 Cross on side walk curb N 31° 58' E 34.63'
 " " " " S 78° 44' E 36.42'
 " " " " S 24° 01' W 29.63'
 " " " " N 76° 22' W 34.56'
 Cross on M.H. rim S 67° 42' W 1.20'

Ash + Forker (Stewart)

pt on M.H. Cover
 Cross on M.H. rim N 67° 42' E 1.43
 " " side walk curb
 N 69° 34' W 29.52'
 Cross



Faba 2nd St. (Stewart)

Pt. on M.H. cover

Cross on M.H. rim S 67° 42' W 0.86

Cross " " " " N 67° 42' E 0.97

Cross on Side walk curb N 22° 18' W 20.00

Cross " " " " S 68° 34' E 31.67

Ash & 3rd St. (Stewart)

Pt. on M.H. cover

Cross on M.H. rim S 67° 42' W 0.93

Cross " " " " N 67° 42' E 0.76

Cross on Side walk curb N 21° 44' E 29.12

Cross " " " " S 67° 39' E 31.28

Ash & 4th St. (Stewart)

Pt. is brass tube in pavement

Cross on M.H. rim S 67° 42' W 0.93

(Footker)

Cross on Side walk curb NE - 30.68

Corner Concrete wall NW - 41.05

Intersections4th & Ash

6th & Monroe

Ash & 5th St

| | | |
|--------------------------|------------------|--------|
| Brass tube in con. block | 9" below surface | |
| Cross on side walk curb | N. 78°-41' W | 35.90 |
| Cross top of con. wall | N 24°-19' E | 43.39 |
| Cross on side walk | S. to W. | 40.64 |
| Cross on end of wall | S.E. cor. | 26.25? |

Ash & 6th St

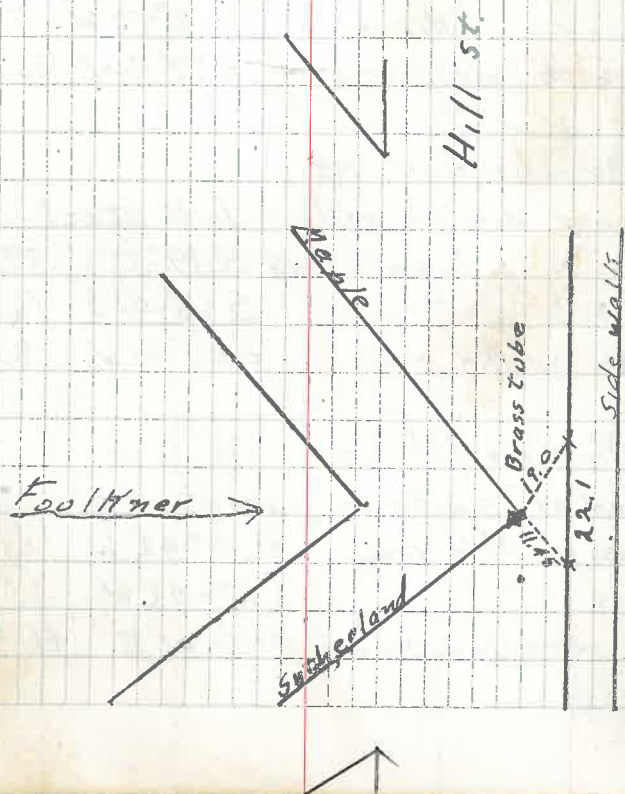
| | | |
|----------------------------------|--------------|------------------|
| Copper pin in drill steel | | |
| Cross on W. face con. wall | S. 67°-00' E | 42.67 |
| Cross on top con. retaining wall | S 33°-51' W | 27.03 ? 26.95 |

Ash & 7th St

| | | |
|---------------------------|-------------|-------|
| Brass tube in con. block. | | |
| Iron pin in ground | S 22°-42' W | 49.79 |
| Iron " " " | N 22°-42' E | 48.61 |

Maple & Sutherland St (Stewart)

| | | |
|-----------------------------|-------------|-------|
| Brass tube in con. Pavement | | |
| Cross on side walk curb | S 92°-18' E | 19.00 |
| Cross " " " " | S 67°-42' W | 11.33 |



Maple & Devereux

Copper pin in hollow steel

Cross on sidewalk curb S 21° 33' W 35.53

Cross " " " N 74° 09' W 36.01

Cross " " " S 65° 35' E 39.33

Cross on M.H. rim S 35° 14' W 10.51

Maple & High St.

Copper pin in hollow drill steel

Cross on sidewalk curb S 36° 39' W 42.72

Cross on M.H. rim S 36° 39' W 7.82

Cross on sidewalk curb S 72° 46' E 33.39

Maple & East St.

Copper pin in hollow drill steel

Cross on sidewalk curb S 39° 52' W 39.22

Cross " " " S 63° 01' E 16.58

Cross on M.H. rim S 58° 10' W 8.63

Maple & 1st St.

Head of spike in pavement

Cross on M.H. rim S 67° 42' W 0.19

Cross " " " S 67° 42' W 2.06

Cross on sidewalk curb N 15° 42' E 41.19

25
2017

Maple

14.22

16.9



Maple & Parker.

Copper pin in hollow drill steel.

Cross on M.H. rim N 22°-15' W 1.56

Cross " " " " N 22°-18' W 2.78

Cross on corner & top concrete wall

25" above ground S. to E. 35.05

Cross on sidewalk curb S. to W 34.80

Maple & 2nd St.

Copper pin in hollow drill steel in pavement

Cross on top of con. wall S. 67°-40' W 43.73

Cross on M.H. rim North W 5.14 (Faultline)Maple & 3rd St.

Head of spike in Bl. pavement.

Cross on M.H. rim S 22°-18' E 0.10

Cross " " " " S 22°-18' E 1.90

Cross on sidewalk curb N 72°-24' W 40.17

Maple & 4th St.

Copper pin in hollow drill steel

Cross in M.H. rim S. 67°-42' W 4.64

Cross in N.E. cor. Valve box N. 38°-42' E 8.30

Cross on Cor. sidewalk SE 33.86

rail in bottle cap 9" above ground in

Power & Tel. pole NE 33.95

New ties made 1/7/63
P.P.

Maple & 5th St.

Copper pin in hollow drill steel
 Cross on face & end of Con. wall N⁴²°E 42.60
 Center top of F.P. S.66°-17'E 40.79
 Concrete block with brass tube N.67°-42'E 30.00

Maple & 6th St. Center M.H. Cover N.4-5.20

Con. block with brass tube (Iron bar
 set over point)

Nail in tin in Elec. L.P. S. to W 31.11

Inside line of con. walk N.W. cor. extended S. by 28.1

nail w/ shaver in power pole SW 31.38

Maple & 7th St.

Brass tube in co. block 8" below surface
 Mound of stone N to W - 3.0

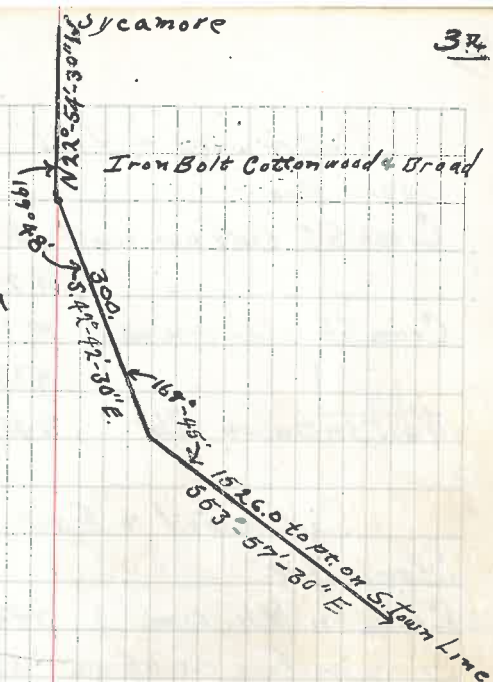
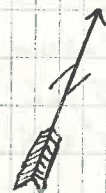
Cottonwood & Sutherland Sts.

Cross in sidewalk curb N.25°-06'E 27.98
 Cross " " " S.59°-54'E 28.91
 Cross in M.H. rim S.22°-18'E 6.00
 Center M.H. S.E. 1/4 5.20

Cottonwood Devereux

Steel bar
 Cross S.E. side con wall N.82°-27'W 30.85
 Cross S.E. " " " N.28°-07'E 21.57
 Cross Top " " " S.53°-06'E 33.56

Base line Points
 along S. Broad St.



Cottonwood and Broad. - Iron bolt.
 S.E. 1/4 + 1m curb 1/2 foot S. of F.P. - 54.20
 N.E. 1/4 + " " 1 1/4 ft. N. of light Post. 40.04
 N.W. 1/4 + " " 1 ft. S. of Light Post. 60.77

New Ties. Aug. 23, 44 J.M. & Chs. Pennington

Tin round curb @ S.W. cor 38.50
 old + E. face wall N.W. cor 30.85
 old + S. face wall N.E. cor 21.51
 New + Top of wall S.E. cor 33.97

Cottonwood & High.

Steel bar

Cross S.E. side con wall 4" below top

N. 73°-35' W 39.09

Cross S.E. side con wall 12" above ground

N 23°-26' E 36.16

Nail in tin on Pole S. 45°-26' E 24.34

Cottonwood & East St.

Steel bar.

Cross in M.H. rim S 42°-31' W 6.80

Cross on face cor. of wall 3" above walk

N 20' W 38.59

Cross top of wall at Iron post N 20' E 36.82

Cottonwood & 1st St.

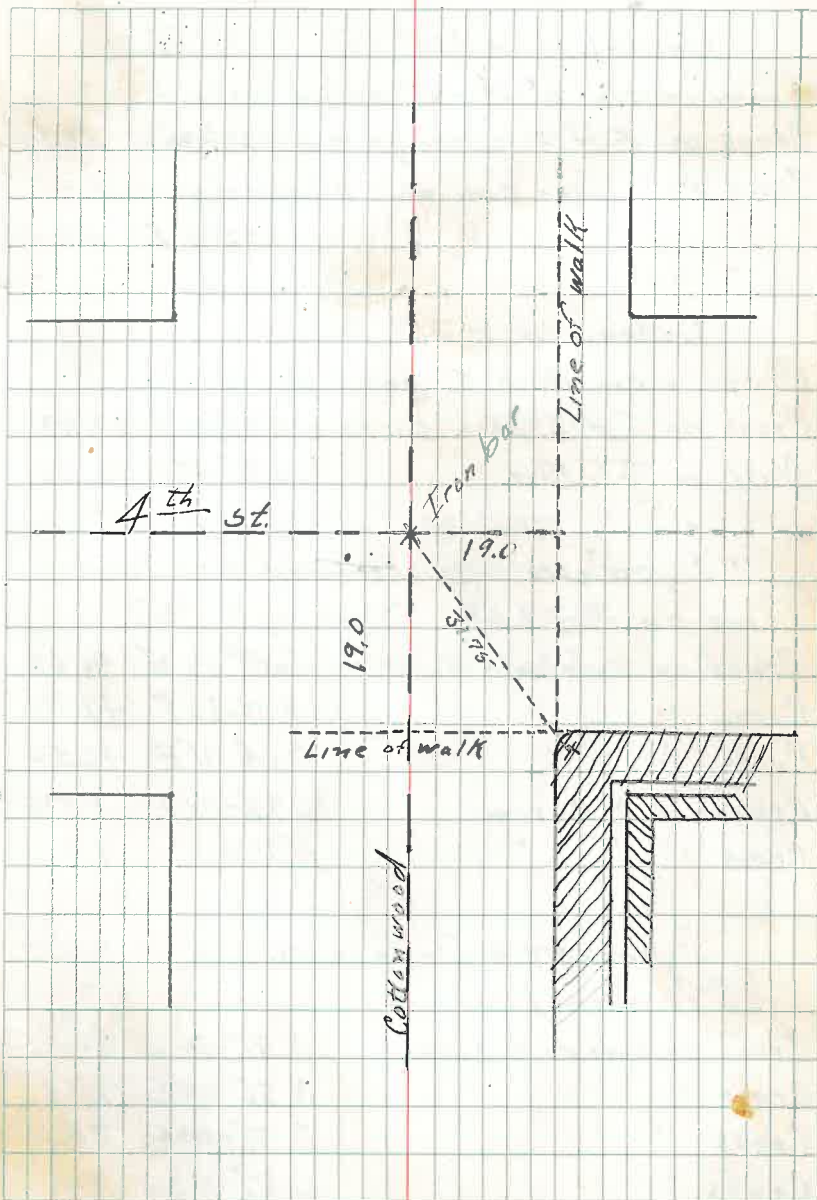
Head of bolt.

Cross on sidewalk curb N 54°-46' W 36.57

Cross " " " N. 23°-43' E 29.56

Cross " " " S 67°-42' E 23.39

Cross on M.H. rim N 67°-42' E 35.6



Cottonwood & 2nd St.

Cross in con. block 8" below surface
 Cross on F.H. 4" above ground N.68°-30'W 33.99
 Cross on S. face con. wall 8" above ground
 N.22°-12'E 43.00

Cottonwood & 3rd St.

Brass in con. Block 8" below surface
 Cross on F.H. 6" above surface N.90°-10'E 29.39
 Nail in Tel. Post S.73°-47'E 35.09

Sycamore & Sutherland Sts.

Point on M.H. Lid.
 Cross on sidewalk curb S.19°-49'W 40.68
 Cross " " " N.03°-26'E 42.98
 Cross " " " S.64°-41'E 40.50
 Cross on M.H. rim S.22°-18'E 0.175
 Cross " " " N.22°-18'W 1.75

Sycamore & Devereux Sts.

^{Copper} Iron rivet in pavement
 Cross on sidewalk curb N.71°-54'W 28.02
 Cross " " " N.26°-59'E 27.91
 Cross " " " S.56°-00'E 34.45
 Cross " " " S.22°-56'W 41.70
 Cross on M.H. rim N.22°-18'W 0.865

Cor Iron fence pipe post S.W.-

Sycamore & Broad St.

N.E. + in walk 52.05
 S.E. + in walk 46.27
 West ¹/₂ center of Trafick button 37.72

Sycamore & High Sts.

Iron rivet in pavement.

| | | |
|------------------------|------------|-------|
| Cross on sidewalk curb | S.61°-20'E | 34.75 |
| Cross " " " | S.29°-27'W | 44.23 |
| Cross on M.H. rim | S.61°-20'E | 4.60 |

Sycamore & East Sts.

Copper pin in hollow drill steel

| | | |
|------------------------|------------|-------|
| Cross on sidewalk curb | S.24°-55'W | 32.47 |
| Cross on sidewalk | N.20°-07'E | 35.67 |
| Cross on sidewalk curb | S. to E. | 30.63 |

Sycamore & 1st Sts.

Iron rivet in pavement.

| | | |
|------------------------|------------|-------|
| Cross on M.H. rim | S.22°-21'E | 0.24 |
| Cross " " " " | S.22°-21'E | 2.25 |
| Cross on sidewalk curb | S.83°-51'E | 35.04 |
| Cross " " " | S.28°-09'W | 27.73 |
| Cross " " " | N.79°-53'W | 38.65 |
| Cross " " " | N.28°-00'E | 32.52 |

Note, The point where the Φ of 1st St. extended from the center of 1st & Cottonwood Sts. with a backsite on center of 1st and Maple Sts. Intersects Φ of Sycamore bears N67°-39'E 0.62 feet.

Sycamore & 2nd St.

Point falls on M.H. Lid.

Cross on M.H. rim S 67°-39'W 1.18

Cross " " " " N 67°-39' E 0.77 Faulkner
6.63 Stewart

Cross on W. face con. wall 2" above surface

S. to E. 41.13

Cross on S.E. side of con. wall 1.25 above ground.

N. 23°-27' E 42.97

Sycamore & 3rd Sts.

Iron rivet in pavement.

Cross in M.H. rim S 67°-39'W 0.14

Cross " " " " S 67°-39'W 2.14

Cross on sidewalk curb N 75°-04'W 34.96

Cross on S.W. side con. wall N. 22°-33' E 43.09

Sycamore & 4th St.

Point falls on M.H. lid.

Cross on M.H. rim N. 22°-21'W 0.60

Cross " " " " S. 22°-21' E 1.55

Cross on S.W. face of con. wall N. 21°-58' E 43.00

Cross on F.H. 8" above ground N. 67°-36'W 39.24

Nail in iron disk on fence Post

S 66°-42' E 41.62

Oak & Sutherland.

Iron rivet in pavement.

| | | |
|------------------------|--------------------------|-------|
| Cross in sidewalk curb | S 20° - $21'$ W | 39.07 |
| Cross " " " | N 55° - $35'$ W | 36.64 |
| Cross " " " | N 18° - $24'$ E | 35.66 |
| Cross " " " | S 63° - $57'$ E | 38.74 |
| Cross on M.H. rim | S 22° - $18'$ E | 0.175 |

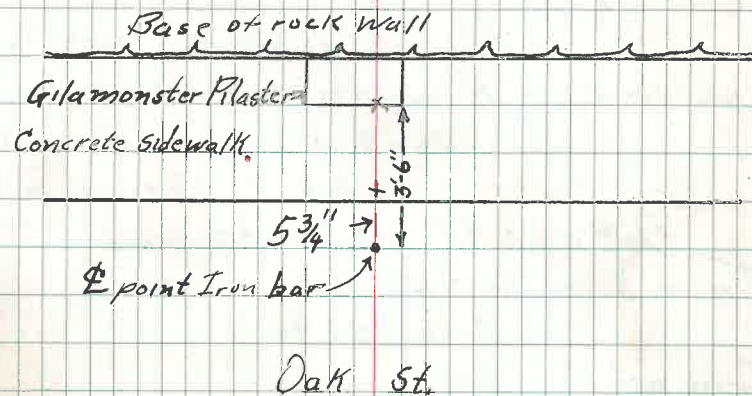
Oak & Devereux

Point falls on M.H. lid.

| | | |
|------------------------|--------------------------|-------|
| Cross on sidewalk curb | S 15° - $24'$ W | 36.62 |
| Cross " " " | N 67° - $00'$ W | 37.89 |
| Cross " " " | N 21° - $08'$ E | 45.81 |
| Cross on M.H. rim | S 22° - $18'$ E | 0.99 |
| Cross " " " " | N 22° - $18'$ W | 1.03 |

Oak & High Sts.

Iron bar $5\frac{3}{4}$ " out from sidewalk
and $3'-6"$ from cross in Plaster



Cedar & Sutherland

| | | |
|---|-----------|-------|
| Iron rivet in black pavement | | |
| + on sidewalk- | S16°-27'W | 35.19 |
| + on " " corb | S58°-24'E | 34.48 |
| + on N.E. side of stone wall 10" above ground | N61°-40'W | 48.23 |
| + on M.H. rim | S22°-18'E | 3.92 |

Cedar & Devereux

| | | |
|----------------------------|-----------|-------|
| Iron rivet in Bl. pavement | | |
| + on side walk | S19°-06'W | 36.60 |
| + " " " corb | S57°-52'E | 35.08 |
| + " M.H. rim | S05°-06'W | 4.76 |

Cedar & East St.

| | | |
|---|-----------|-------|
| Steel bar in ground | | |
| + on N.E. side con. wall - 12" above ground | N59°-00'W | 48.07 |

(Faulkner)

| | | |
|---------------------------------------|--------|-------|
| South face of retaining wall on Cedar | | |
| Top of wall | W. 1/4 | 24.67 |

Cedar & Broad St. + cut in pavement

| | | |
|-----------|------|-------|
| + in corb | S.E. | 53.25 |
| + " " | N.E. | 56.84 |
| + " " | N.W. | 54.81 |
| + " " | S.W. | 55.53 |

Cedar & High Sts.

Drill steel 6" below surface - set in line of South face rock retaining wall, Distance 30 ft.

Oak & High st.



Oak St.

dug 1 1/2'

High St.

Cedar & 1st St.

Steel bar in ground

An iron pin 5/8" at corner of con wall

N 67°-06' W 42.07

Nail in iron disk in pole N 18°-49' E 28.74

Cedar & 4th

Drill steel in ground

Mesquite & Sutherland

Steel bar set in concrete

+ in M.H. rim S 22°-18' E 2.75

+ top concrete wall S 31°-12' W 36.59

+ " " " N 73°-39' W 38.42

+ sidewalk curb S 66°-30' E 34.48

Mesquite & Devereux

Iron rivet in Bl. pavement

+ N.E. side con wall S. 17°-52' W. 41.82

+ con. Valve box S 77°-52' E 19.07

+ M.H. rim S 67°-42' W 0.17

+ M.H. rim S 67°-42' W 2.19

Cedar & 3rd

Iron bar 1 ft. below surface with 1/4 pipe slipped over it.

Mesquite & Broad. copper rivet.

+ cut in ^{Mesquite} curb } 23.32 S.E.

o Round iron post 29.70 N.E.

+ in curb 26.03 S.E. broad st.

Cedar & Pine Nail in R.R. track plank

+ at cor. City Hall S.E. 53.17

+ on curb N.E. 43.63

+ in walk N.W. 49.47

+ " " S.W. 44.83

Mesquite & High st.

| | | |
|--------------------------------|------------|-------|
| Pe falls on M.H. lid. | | |
| + on sidewalk curb | N 32°-48'E | 28.66 |
| + on S.W. face con. wall | S 72°-06'E | 38.28 |
| + on S.E. side con. block wall | S 29°-20'W | 39.72 |
| + on M.H. rim | S 67°-42'W | 0.91 |
| + " " " " | N 67°-42'E | 0.83 |

Mesquite & East st.

| | | |
|-----------------------------|------------|-------|
| Iron rivet in Bl. pavement | | |
| + N.E. side con. Garage 10" | N 71°-13'W | 47.69 |
| + S.W. side con. wall | N 28°-17'E | 39.03 |
| + on M.H. rim | N 59°-23'E | 13.23 |

Mesquite & 1st St.

| | | |
|----------------------------|------------|--------|
| Iron rivet in Bl. pavement | | |
| + N.E. face con wall | S 29°-45'W | 42.01 |
| + on M.H. rim | S 73°-35'W | 9.82 ? |
| + on N.E. face con wall | N 71°-59'W | 40.76 |

Tin in pole 5' above ground S.E.^{ly} - 23.20

Mesquite & 4th St. (Milton)

| | | |
|-------------------------|--------------------|-------|
| Drill steel (original) | | |
| Tin in pole | S.E. ^{ly} | 28.98 |
| " " " | N.E. ^{ly} | 63.12 |
| E.P. - 6" above surface | N.W. ^{ly} | 53.70 |

Bailey + Sutherland

Copper pin in hollow steel
 + in iron fence post 1" above top of

| | | |
|--------------------------|------------|-------|
| Concrete wall | S 29°-52'W | 39.59 |
| + on S.W. side con. wall | N 19°-20'E | 45.84 |
| + on M.H. rim | S 22°-18'E | 4.06 |

Bailey + Berereux St.

Copper pin in hollow steel

| | | |
|--------------------------|------------|-------|
| + on sidewalk | S 64°-05'E | 41.40 |
| + on M.H. rim | S 15°-29'E | 20.20 |
| + on top bridge abutment | S 89°-11'W | 19.76 |

Bailey + East St.

Steel bar

| | | |
|--|------------|-------|
| Nail in disk in pole | N 09°-09'E | 47.55 |
| + on S.W. side con wall 8" above surface | S 42°-58'E | 86.85 |

Bailey + 1st St.

Steel bar

| | | |
|-----------------------------|------|--------|
| Nail in disk in anchor post | SW 4 | 36.80? |
| Nail in disk in High pole | SE 4 | 31.82? |
| | | 30.00 |

Found 1956
 Davis

Bailey + Hill St.

Drill steel 3" from W. edge of pavement

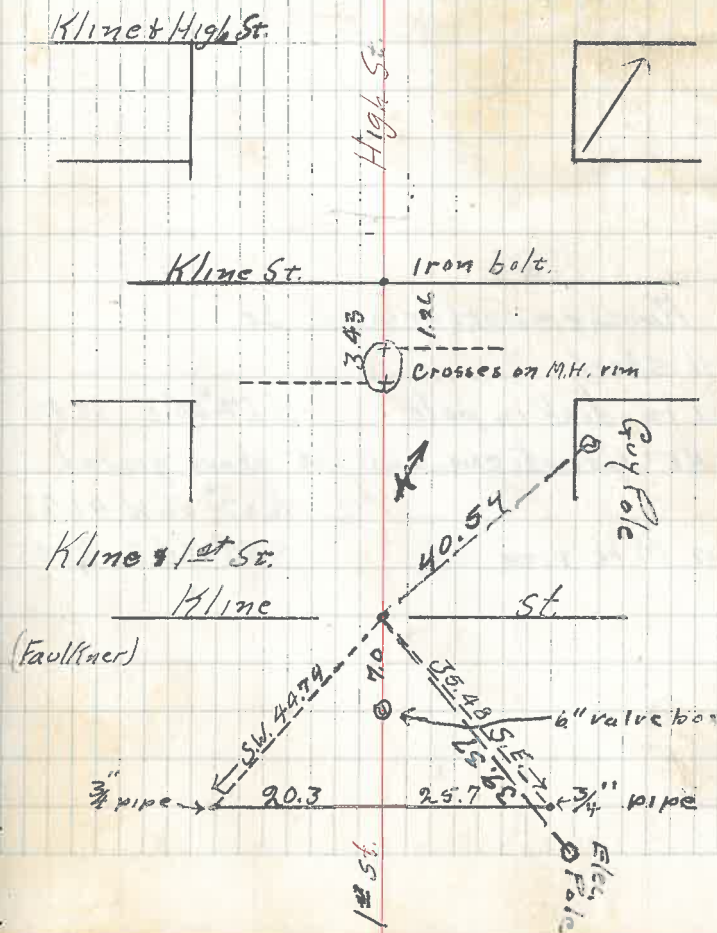
| | | |
|---------------------|--------|-------|
| Nail in tin in pole | N 4 | 32.12 |
| + in M.H. rim | N.W. 4 | 3.21 |
| + in cor. con wall | S.E. 4 | 44.10 |

Baily + 4th St. (Milton)
 Drill steel set in concrete (by Faulkner).
 is 0.13 E. of pt.
 + top of con wall. East & S.W. 40.35
 Tin in pole S.E. 30.57

Baily + 6th St. (Milton)
 Pipe driven ground disrupted
 Set nail for pt. 0.90 East of pipe
 Tin in pole S.W. 27.25
 Pipe fence post S.E. 43.85
 " " " N.E. 42.23

Kline & Devereux St.
 Iron rivet in Bl. pavement.
 + on M.H. rim S 22°-18' E 0.05
 Drill steel in ground S 67°-42' W 11.23
 Es. Devereux & Apache N. 22°-25' W 285.20
 Es. Devereux & Baily S. 22°-17'-45" E 360.00

Kline & 1st St.
 Drill steel



55

Kline & 4th St.

Drill steel notes

Apache & Sutherland St.

Drill steel

Nail in disk in pole S 67° 00' E 32.42

+ in N.E. side of con. wall 14" above ground

N 67° 56' W 41.23

+ on M.H. rim

S 92° 20' E 1.095

56

Apache & Devereux St.

Iron rivet in pavement.

- + on sidewalk N 22°-56'E 34.07
- + on iron fence post S 23°-44'W 42.47
- + on M.H. rim S 54°-50'W 6.59
- + on curb S.E. 4 31.72

Apache & ~~High St.~~ East.

Drill steel

Apache & 1st

Drill steel

Apache & 4th

Drill steel

Apache & High St.

Drill steel

- + on S.W. face con wall N 22°-32'E 42.58
- Nail in disk in pole S 67°-39'E 32.62
- " " " " " S 15°-46'W 33.47

Tonto & Sutherland

Drill steel

 $\frac{1}{2}$ " pipe at fence cor. S 22°-43' W 42.53

+ on S.E. side Con. Wall N 22°-09' E 43.59

Nail in disk in pole S 65°-40' E 33.04

Tonto & Devereux

Drill steel Reset with $\frac{1}{2}$ iron (J.M.)

+ top con. wall S 20°-57' W 42.59

Nail in disk in pole S to E 42.40

Tonto & High

Point on M.H. lid

+ on M.H. rim S 22°-20' E 1.94

+ " " " " N 22°-20' W 0.29

+ on F.H. S 45°-23' W 32.05

+ on N.W. side con wall S 68°-27' E 42.60

Tonto & 1st St.

Drill Steel

Tonto & 4th St.

Drill steel

Tonto & Devereux

City Man Hole

S 20° Tonto

22.40

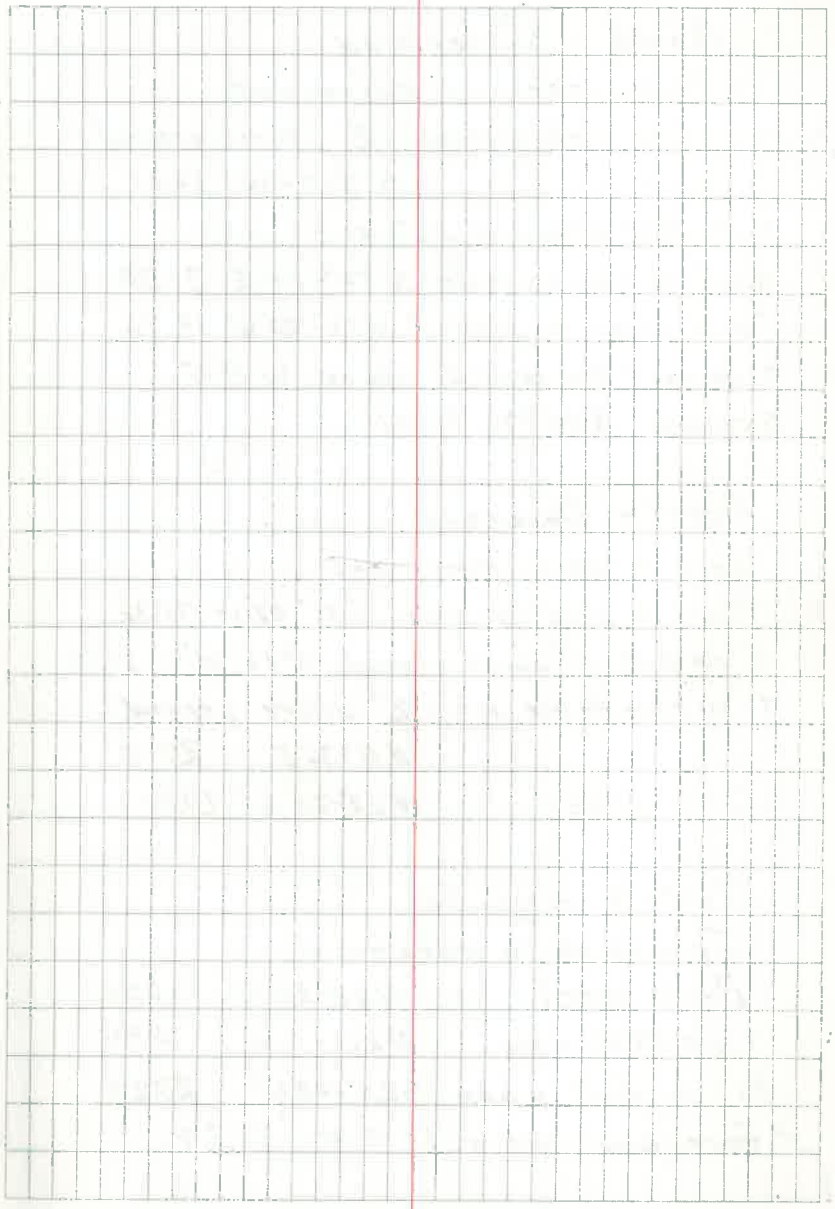
Devereux

Yuma & 3rd St
Drill steel. Notices

Yuma & 4th St.
Drill steel Notices

Mohave & High st.
Nail in Bridge deck.
Drill steel in ground 3ft. S.E. of S.E.
end of bridge - S22°-20' E 35.26
from drill steel - a + on top of con.
wall N67°-40' E 18.20
and + on top con. wall S67°-40' W 9.65

Mesa & High
Drill steel in pavement.
+ in M.H. rim N87°-08' W 18.74
Top F.H. NW⁴ 36.69



North & Sutherland

Drill steel in pavement

+ on con. fence post 12" above ground

N 3°-04'W 36.41

+ on M.H. rim N 56°-41'E 4.30

Nail in cap in pole S 74°-14'E 31.38

Drill steel in ground N 22°-20'W 12.76

+ on face con. wall 2" above W.P.A.

Stamp N.W. 4 35.41

North & Devereux

Iron rivet in pavement

Nail in disk in pole S 36°-02'W 35.32

+ on F.H. 4" above ground N 46°-41'W 25.15

+ on Iron fence post 2" above ground

N. 11°-36'E 27.15

Drill steel N 22°-20'W 11.71

North & High St.

Iron rivet in pavement

Drill steel N 22°-20'W 10.56

+ on M.H. rim N 22°-18'E 3.95

Nail in disk in pole S 25°-08'W 27.27

+ face, end con wall N.W. 31.24

North + East St.

1/4" round bar in edge of pavement

Nail in tin in pole N.W. 29.91

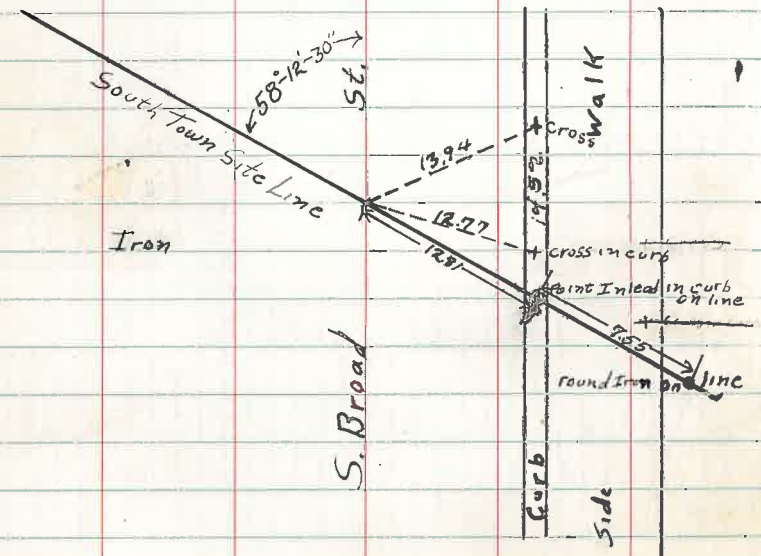
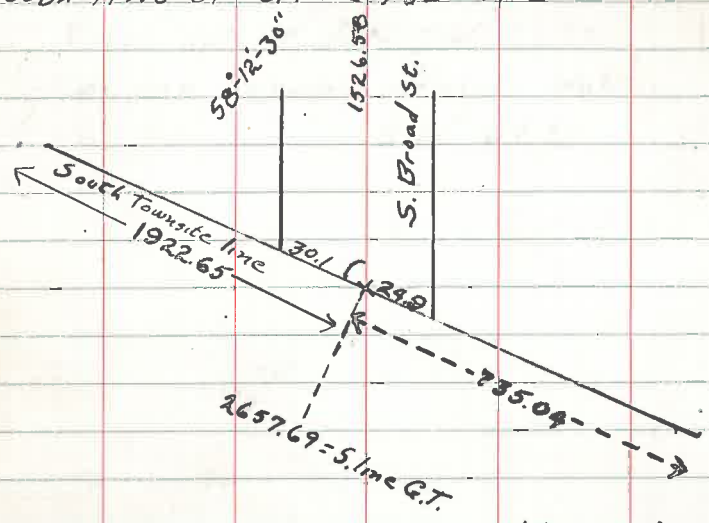
Valve nut of F.H. S.W. 26.22

Cor. con. capping on stone wall

N.W. 34.30

Broad St. points

South Broad St. Base line with
South line of Globe Townsite



South Broad & Cottonwood
Iron Bolt.

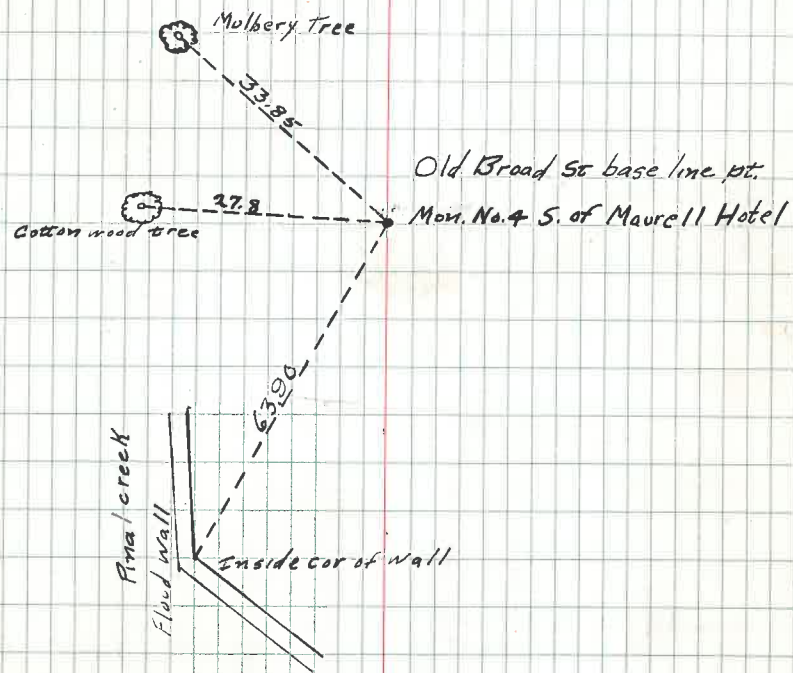
| | |
|------------------|------------|
| + in walk NE 1/4 | 40.04 |
| + " " SE 1/4 | 51.02 50.4 |

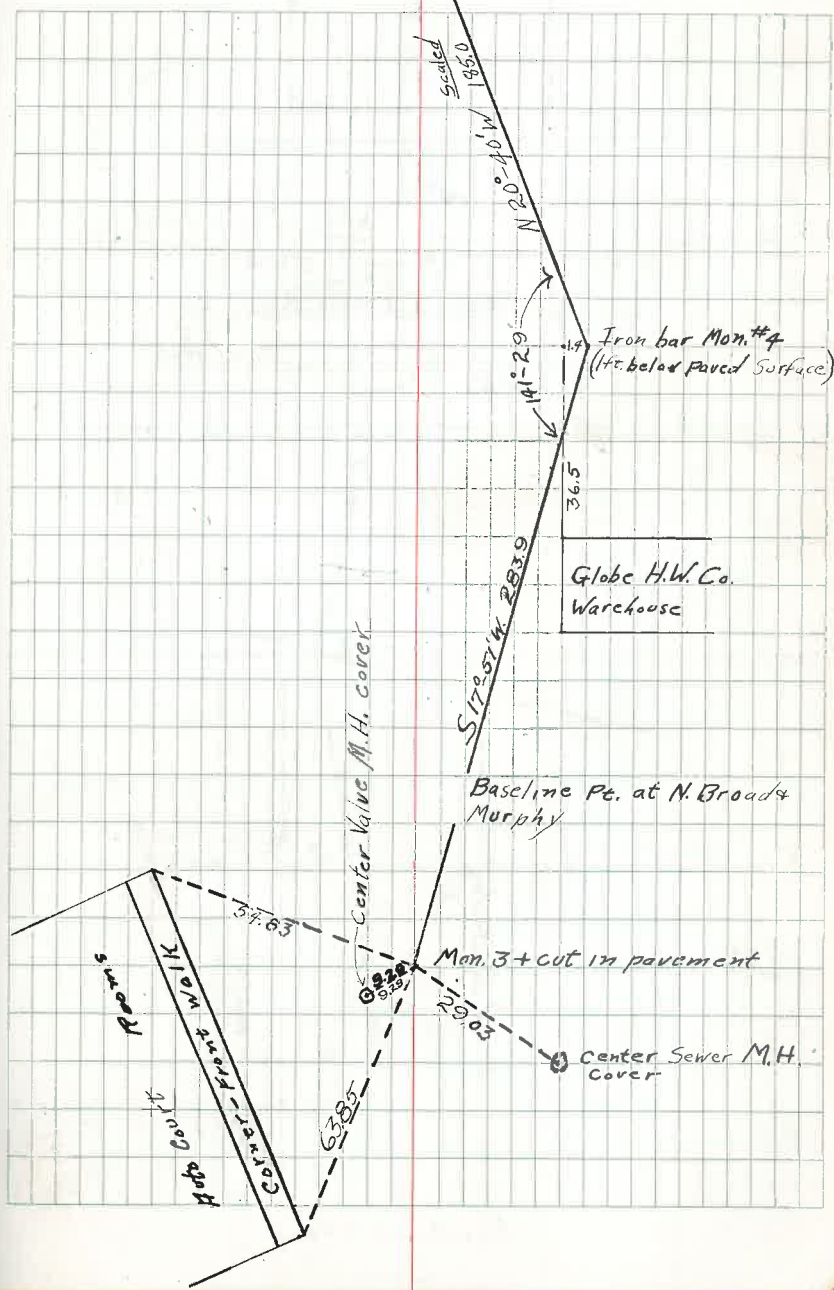
South Broad & Sycamore

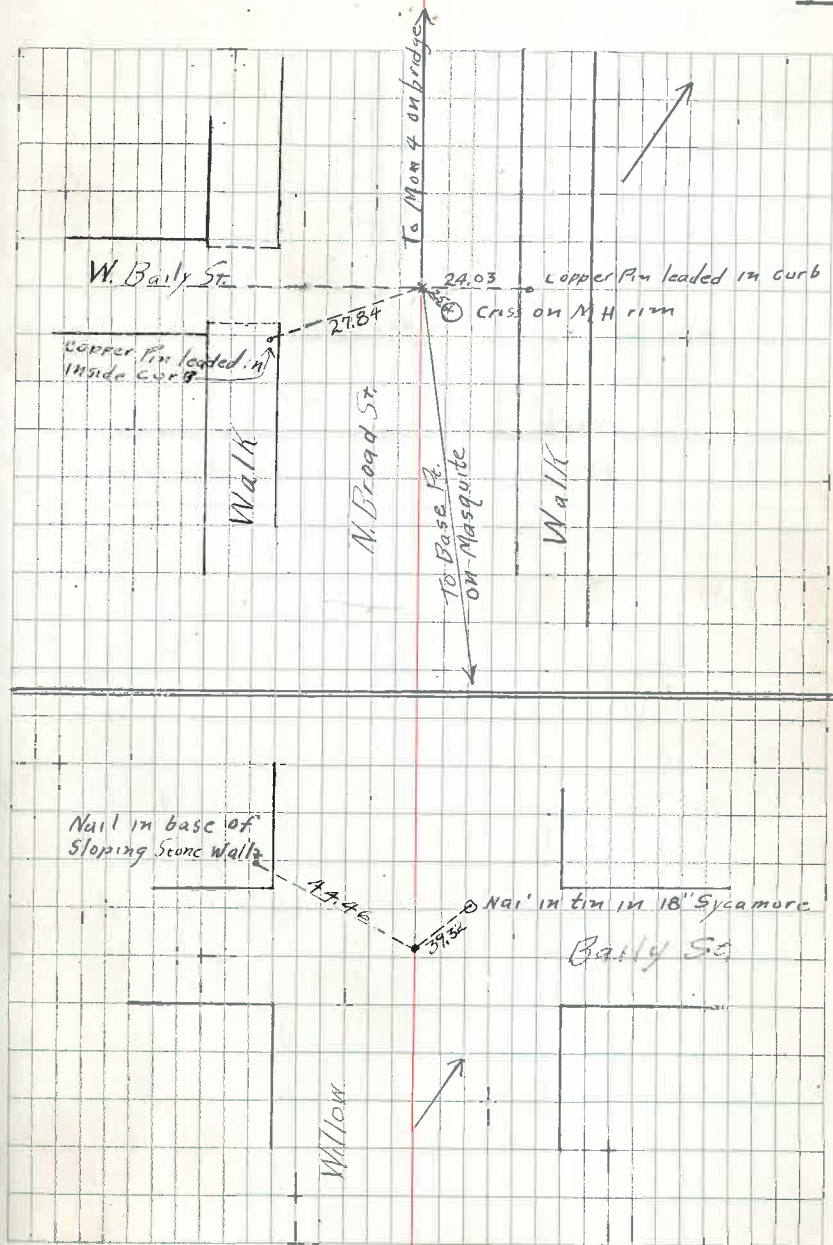
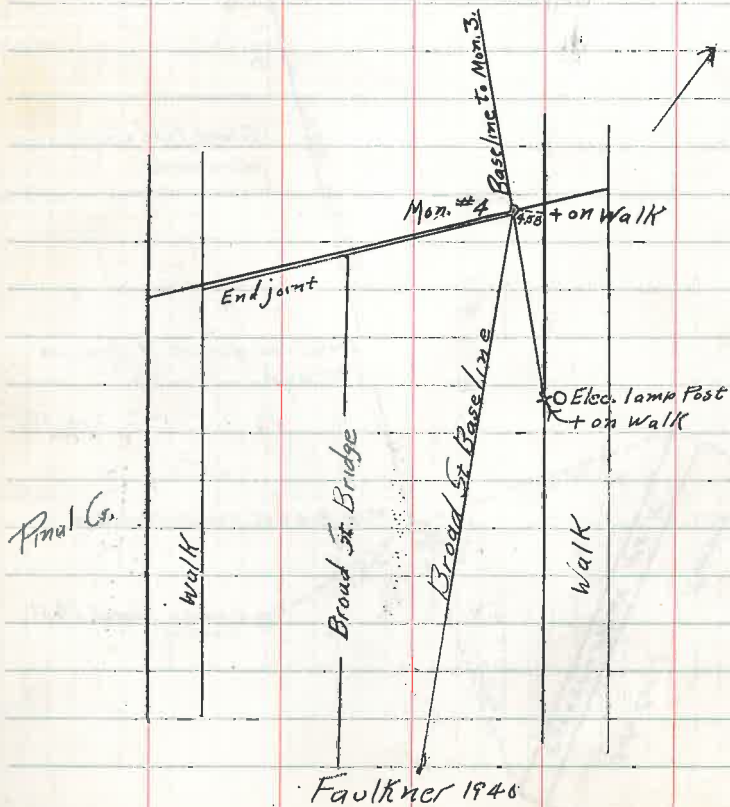
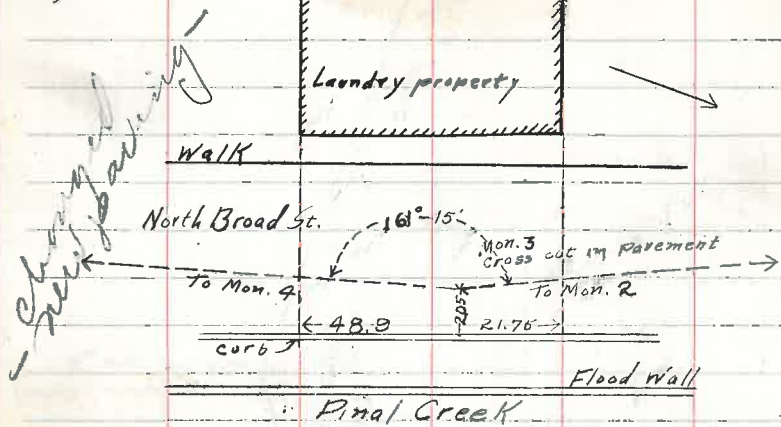
| | |
|--------------------|-------|
| + in walk N.E. 1/4 | 52.05 |
| + " " S.E. 1/4 | 46.27 |

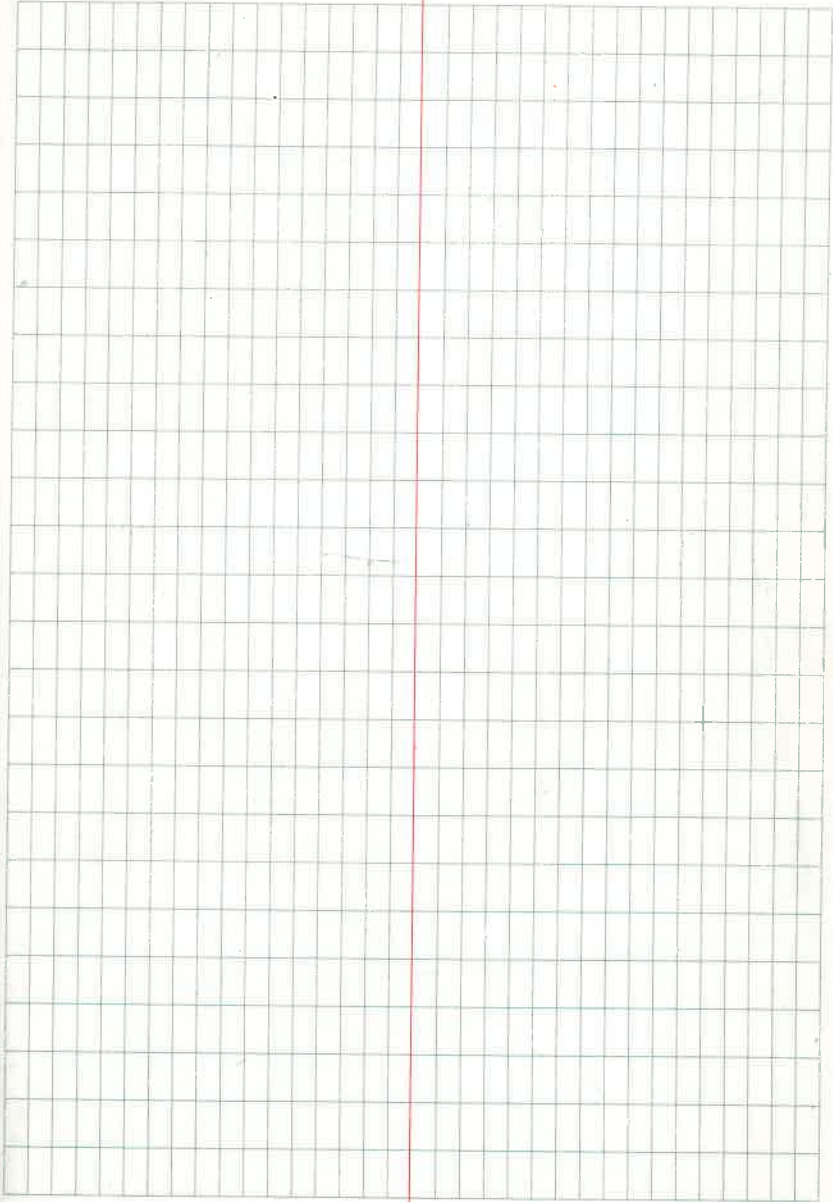
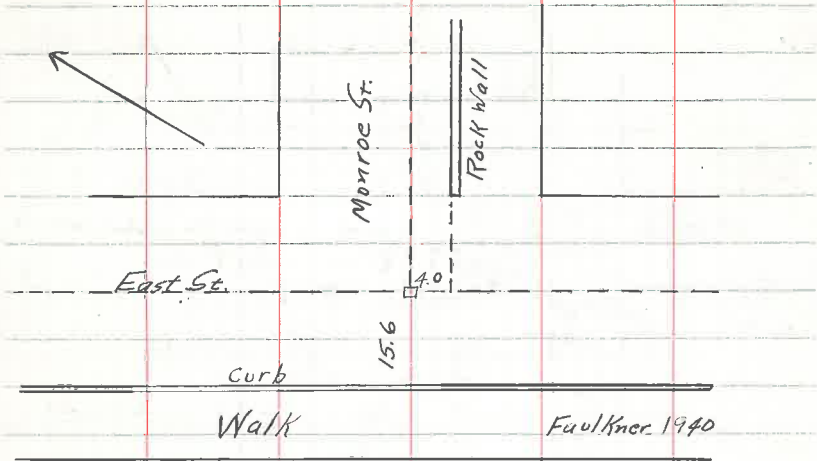
Center of Traffic button W 1/4 37.72

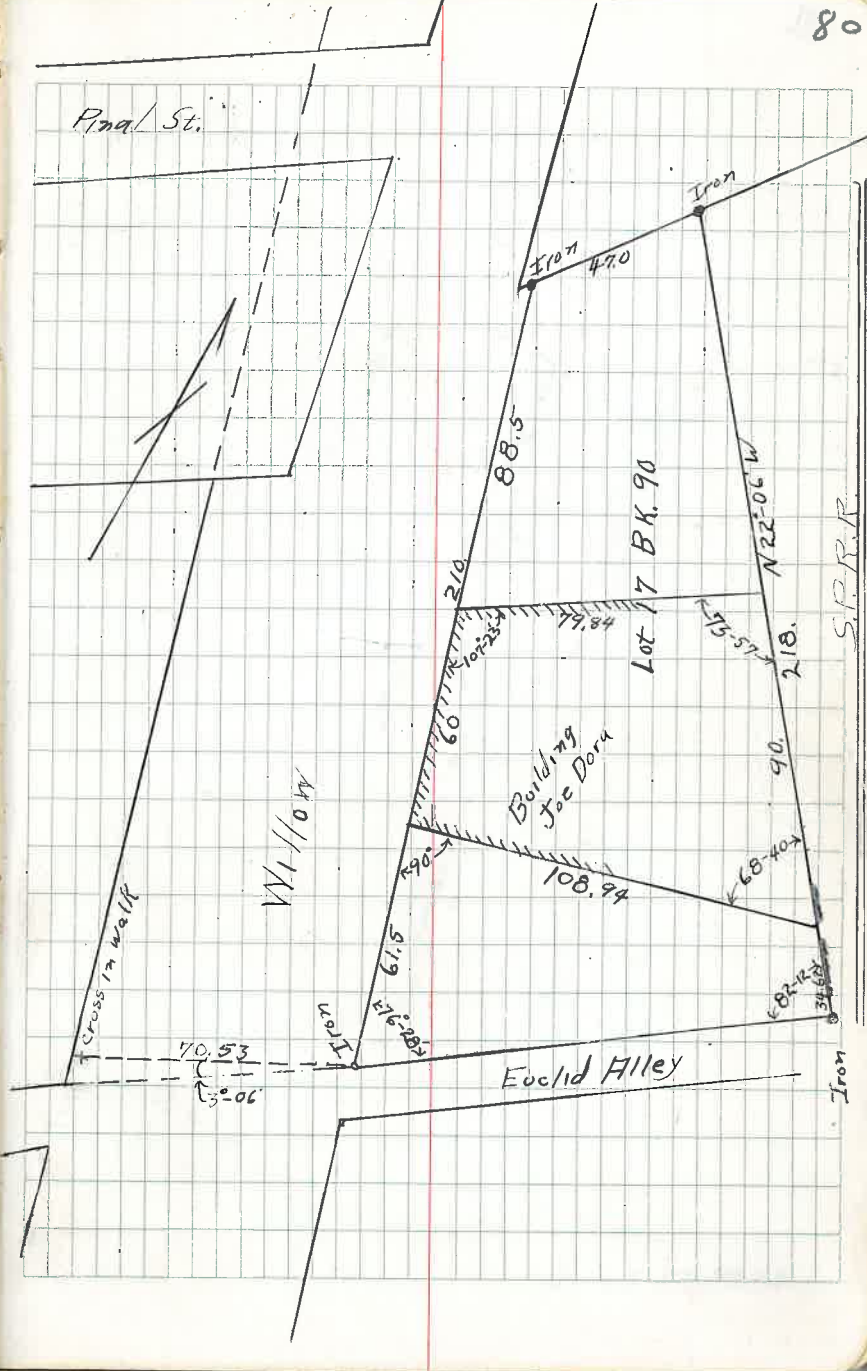




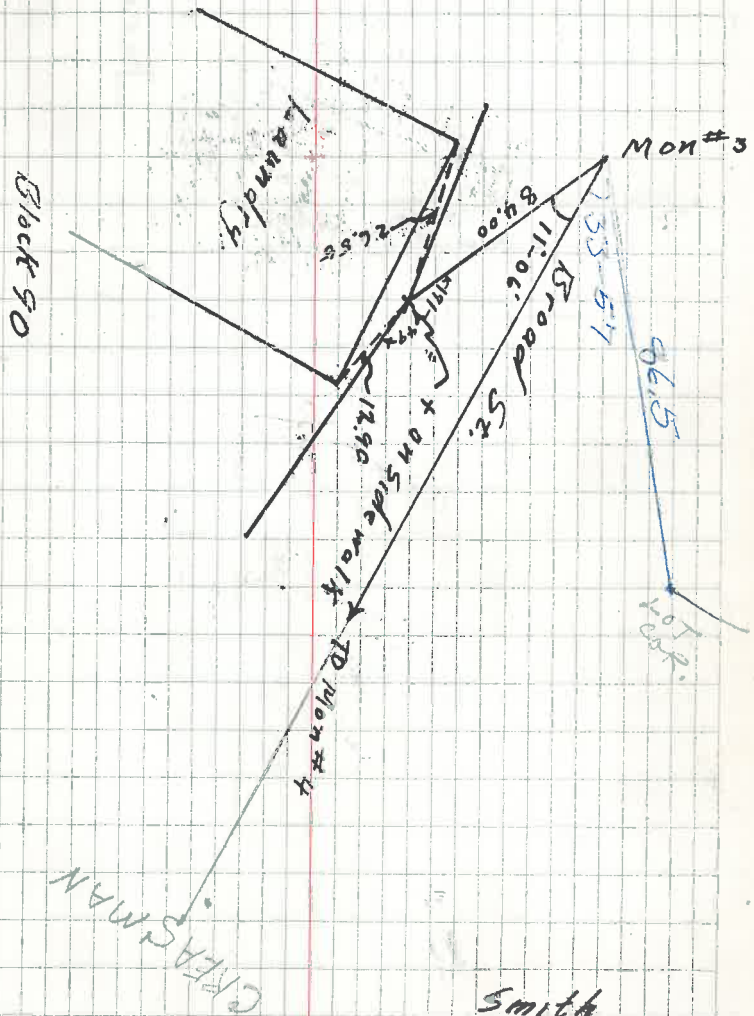




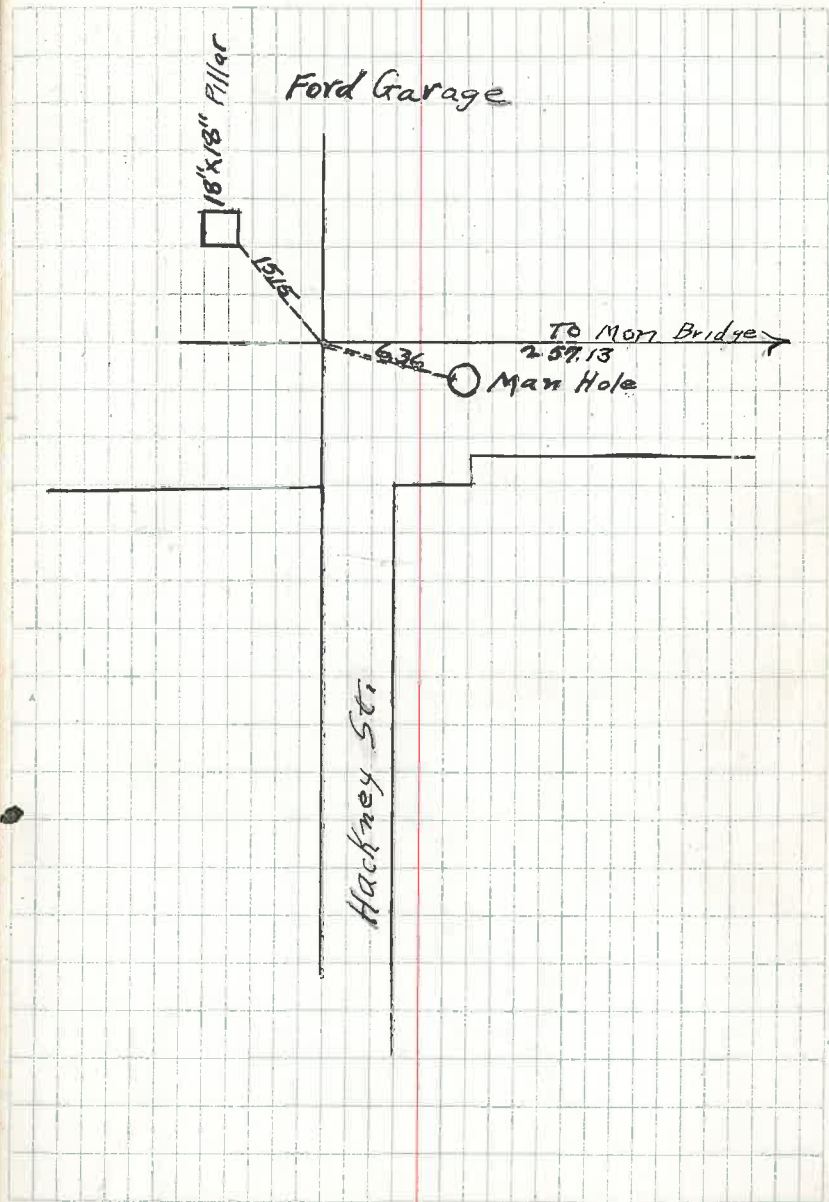




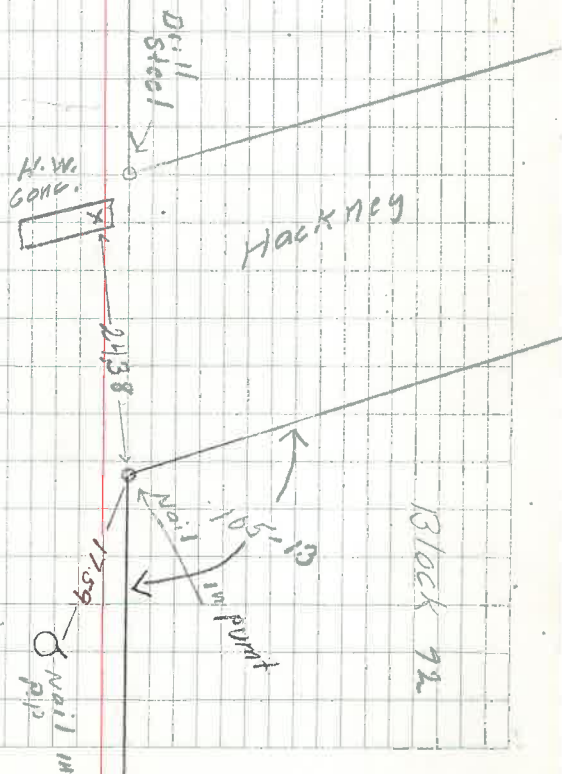
Prop. Line Block 90 G.T.

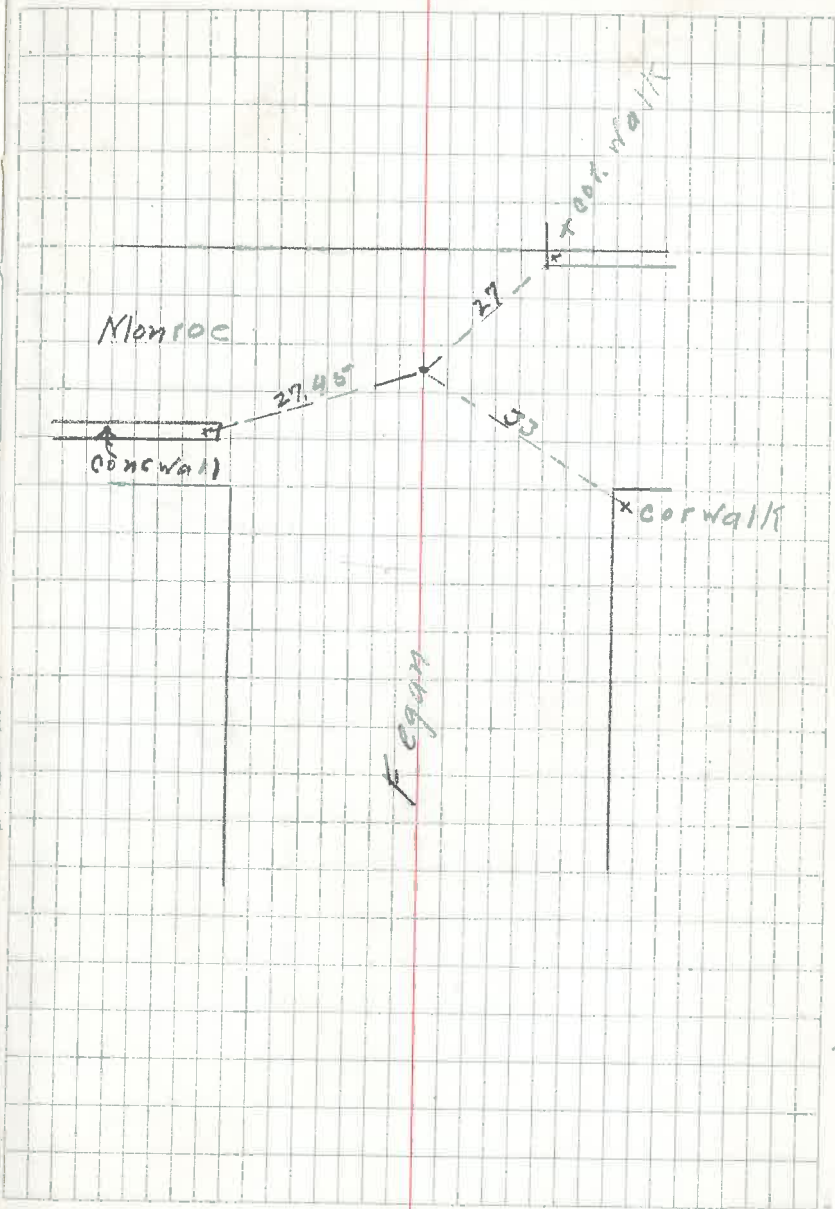


Smith
June 17, 1949

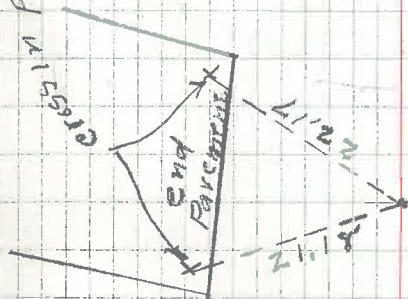


Willow





CRS 115810



SEC COX
 25/27
 36/34

Oak St

Metropole

3265

3999

Metropole

Iron Pin

Willow St

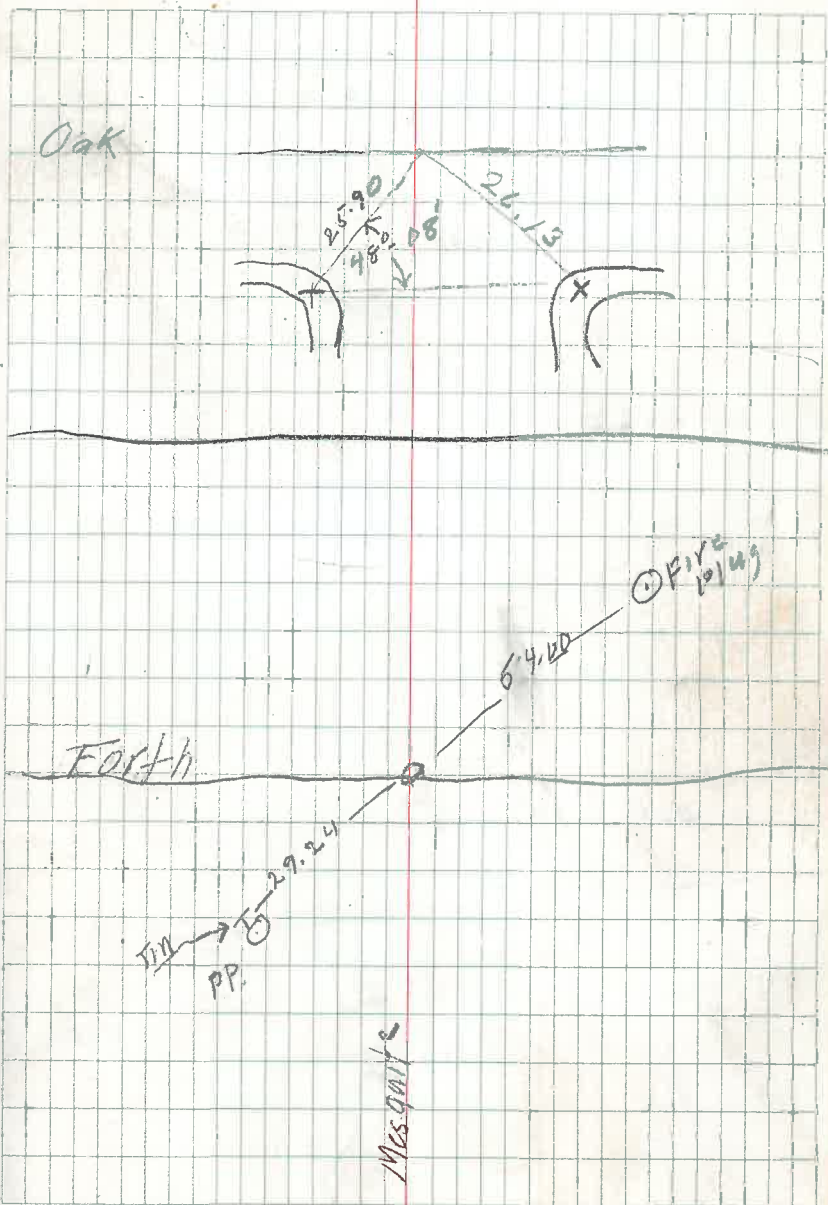
95

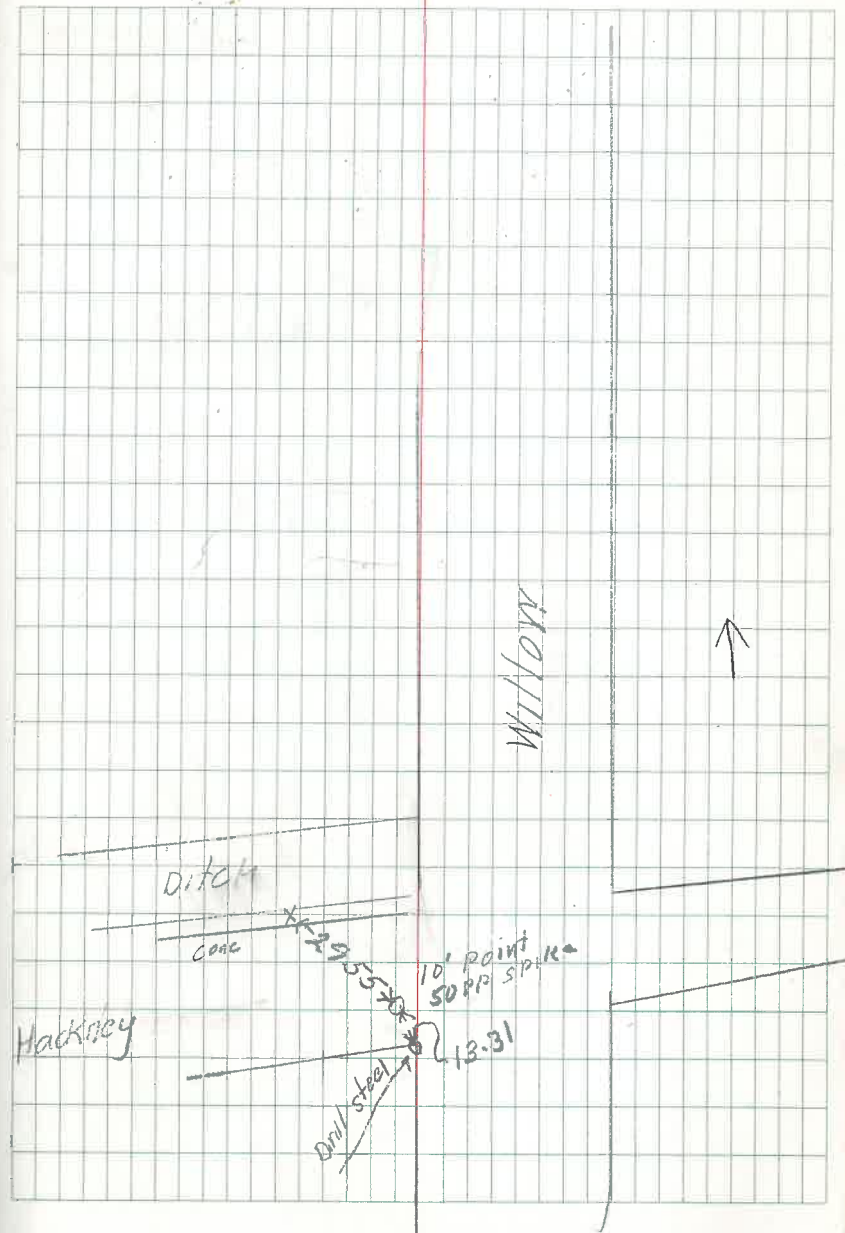
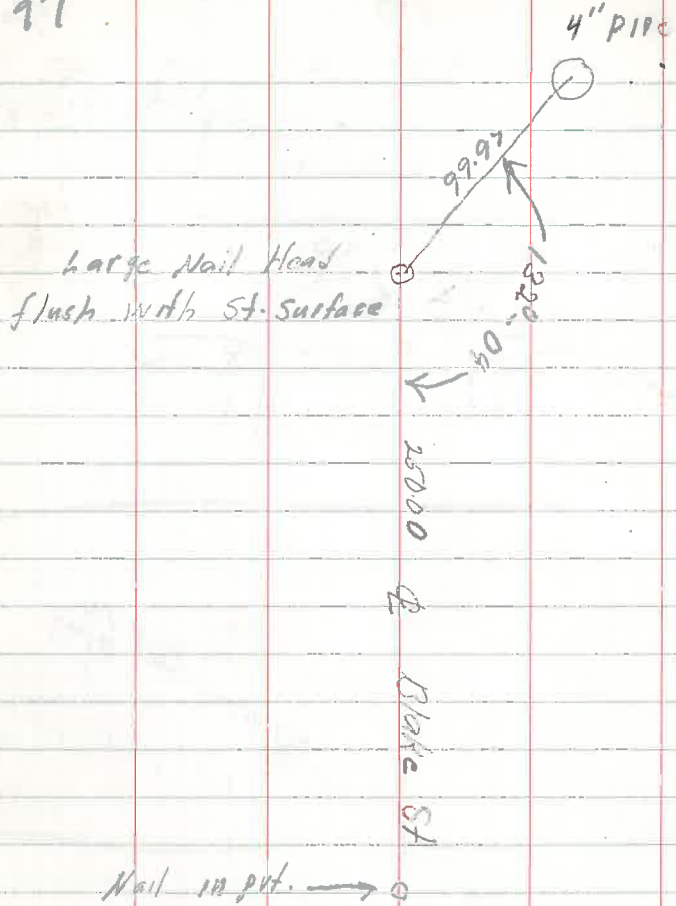
| Sta. | Pt. | Hx | Vx | H.D. |
|------|-------------|--------------|-----|-------|
| X SW | Oak + 4H | 0.0 | | |
| | X SE | Pt. 48.08 | 0.0 | 25.90 |

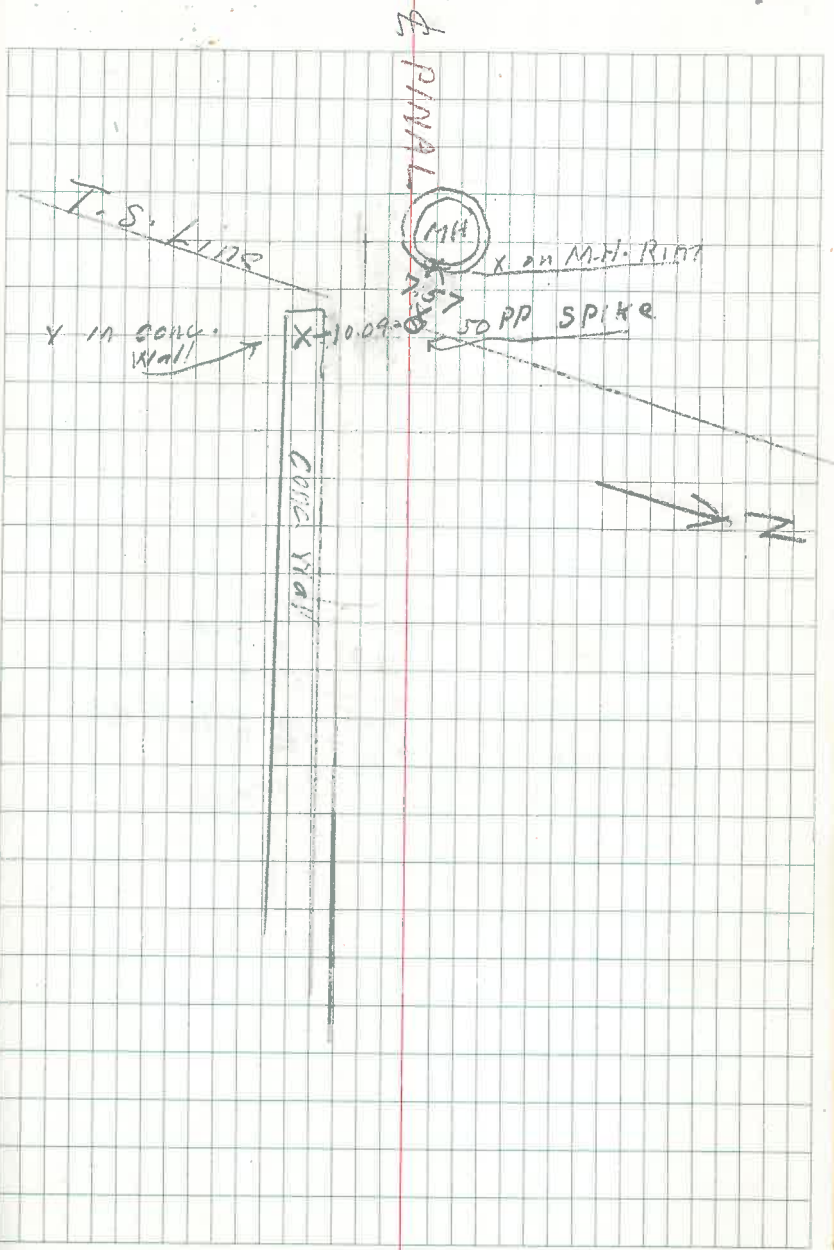
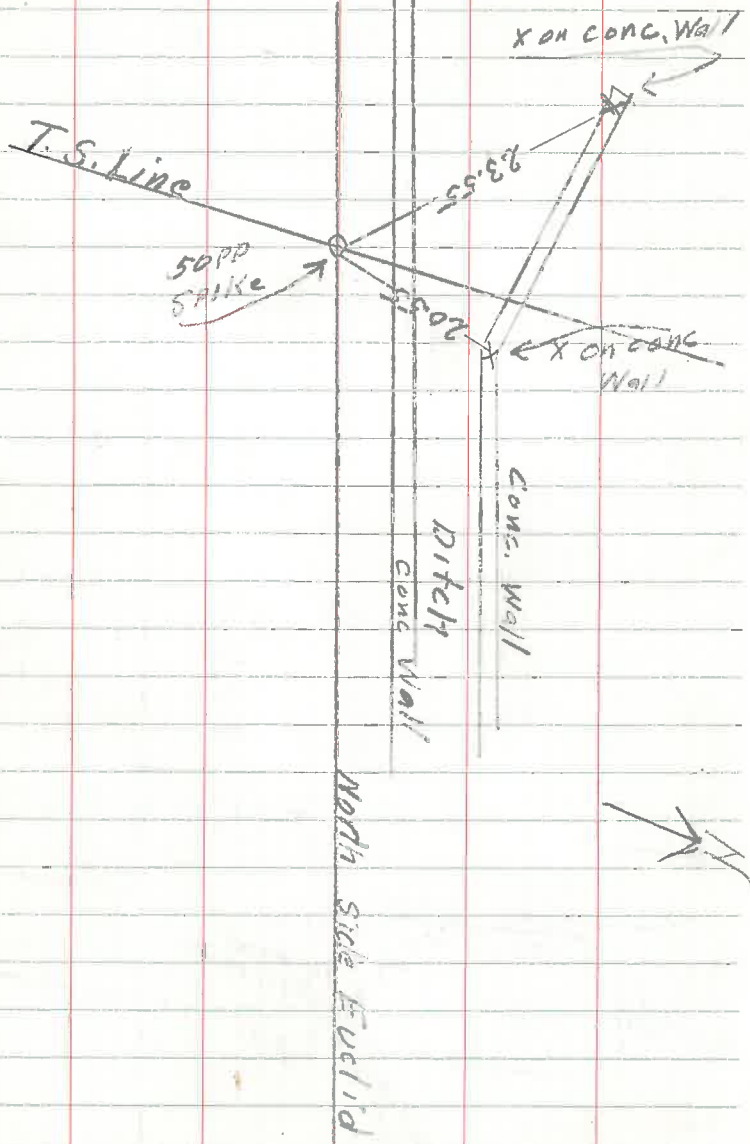
444

N
↑

96







Sec. line
NO-21-22E

