

POINTS
OF GLOBE.

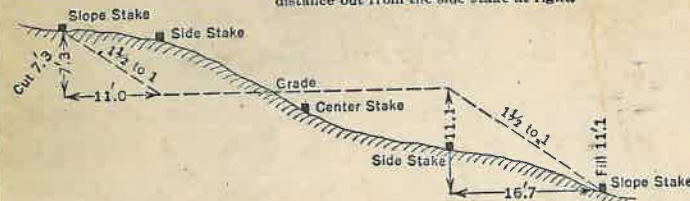
WORLD'S MAP BOOK

29

DISTANCES FROM SIDE STAKES FOR CROSS-SECTIONING

Roadway of any Width. Side Slopes 1 1/2 to 1.

In the figure below: opposite 7 under "Cut or Fill" and under .3 read 11.0, the distance out from the side stake at left. Also, opposite 11 under "Cut or Fill" and under .1 read 16.7, the distance out from the side stake at right.



Cut or Fill	Distance out from Side or Shoulder Stake											Cut or Fill
	0	.1	.2	.3	.4	.5	.6	.7	.8	.9		
0	0.0	0.2	0.3	0.5	0.6	0.8	0.9	1.1	1.2	1.4	1.4	0
1	1.5	1.7	1.8	2.0	2.1	2.3	2.4	2.6	2.7	2.9	2.9	1
2	3.0	3.2	3.3	3.5	3.6	3.8	3.9	4.1	4.2	4.4	4.4	2
3	4.5	4.7	4.8	5.0	5.1	5.3	5.4	5.6	5.7	5.9	5.9	3
4	6.0	6.2	6.3	6.5	6.6	6.8	6.9	7.1	7.2	7.4	7.4	4
5	7.5	7.7	7.8	8.0	8.1	8.3	8.4	8.6	8.7	8.9	8.9	5
6	9.0	9.2	9.3	9.5	9.6	9.8	9.9	10.1	10.2	10.4	10.4	6
7	10.5	10.7	10.8	11.0	11.1	11.3	11.4	11.6	11.7	11.9	11.9	7
8	12.0	12.2	12.3	12.5	12.6	12.8	12.9	13.1	13.2	13.4	13.4	8
9	13.5	13.7	13.8	14.0	14.1	14.3	14.4	14.6	14.7	14.9	14.9	9
10	15.0	15.2	15.3	15.5	15.6	15.8	15.9	16.1	16.2	16.4	16.4	10
11	16.5	16.7	16.8	17.0	17.1	17.3	17.4	17.6	17.7	17.9	17.9	11
12	18.0	18.2	18.3	18.5	18.6	18.8	18.9	19.1	19.2	19.4	19.4	12
13	19.5	19.7	19.8	20.0	20.1	20.3	20.4	20.6	20.7	20.9	20.9	13
14	21.0	21.2	21.3	21.5	21.6	21.8	21.9	22.1	22.2	22.4	22.4	14
15	22.5	22.7	22.8	23.0	23.1	23.3	23.4	23.6	23.7	23.9	23.9	15
16	24.0	24.2	24.3	24.5	24.6	24.8	24.9	25.1	25.2	25.4	25.4	16
17	25.5	25.7	25.8	26.0	26.1	26.3	26.4	26.6	26.7	26.9	26.9	17
18	27.0	27.2	27.3	27.5	27.6	27.8	27.9	28.1	28.2	28.4	28.4	18
19	28.5	28.7	28.8	29.0	29.1	29.3	29.4	29.6	29.7	29.9	29.9	19
20	30.0	30.2	30.3	30.5	30.6	30.8	30.9	31.1	31.2	31.4	31.4	20
21	31.5	31.7	31.8	32.0	32.1	32.3	32.4	32.6	32.7	32.9	32.9	21
22	33.0	33.2	33.3	33.5	33.6	33.8	33.9	34.1	34.2	34.4	34.4	22
23	34.5	34.7	34.8	35.0	35.1	35.3	35.4	35.6	35.7	35.9	35.9	23
24	36.0	36.2	36.3	36.5	36.6	36.8	36.9	37.1	37.2	37.4	37.4	24
25	37.5	37.7	37.8	38.0	38.1	38.3	38.4	38.6	38.7	38.9	38.9	25
26	39.0	39.2	39.3	39.5	39.6	39.8	39.9	40.1	40.2	40.4	40.4	26
27	40.5	40.7	40.8	41.0	41.1	41.3	41.4	41.6	41.7	41.9	41.9	27
28	42.0	42.2	42.3	42.5	42.6	42.8	42.9	43.1	43.2	43.4	43.4	28
29	43.5	43.7	43.8	44.0	44.1	44.3	44.4	44.6	44.7	44.9	44.9	29
30	45.0	45.2	45.3	45.5	45.6	45.8	45.9	46.1	46.2	46.4	46.4	30
31	46.5	46.7	46.8	47.0	47.1	47.3	47.4	47.6	47.7	47.9	47.9	31
32	48.0	48.2	48.3	48.5	48.6	48.8	48.9	49.1	49.2	49.4	49.4	32
33	49.5	49.7	49.8	50.0	50.1	50.3	50.4	50.6	50.7	50.9	50.9	33
34	51.0	51.2	51.3	51.5	51.6	51.8	51.9	52.1	52.2	52.4	52.4	34
35	52.5	52.7	52.8	53.0	53.1	53.3	53.4	53.6	53.7	53.9	53.9	35
36	54.0	54.2	54.3	54.5	54.6	54.8	54.9	55.1	55.2	55.4	55.4	36
37	55.5	55.7	55.8	56.0	56.1	56.3	56.4	56.6	56.7	56.9	56.9	37
38	57.0	57.2	57.3	57.5	57.6	57.8	57.9	58.1	58.2	58.4	58.4	38
39	58.5	58.7	58.8	59.0	59.1	59.3	59.4	59.6	59.7	59.9	59.9	39
40	60.0	60.2	60.3	60.5	60.6	60.8	60.9	61.1	61.2	61.4	61.4	40

KEUFFEL & ESSER CO., N. Y.
For Curve Tables see end of book.

Julius Milton
163 Demerue St.
Globe.

21
45
51

The paper in this book No. F363A
is made of 50% high grade rag stock
with a WATER RESISTING surface sizing.

10,360. k. a. ai. oM.

Julius Milton
163 S. Deereux St.
Globe - Ariz.

XEROX COPIES OF THIS
BOOK ARE LOCATED AT
THE ARIZONA DEPT. OF
TRANSPORTATION, LOCATION
SERVICES, IN THE FILES
OF JEFF SWAN.

COPIED 10/10/74

Jeffrey A. Swan

Ch. of

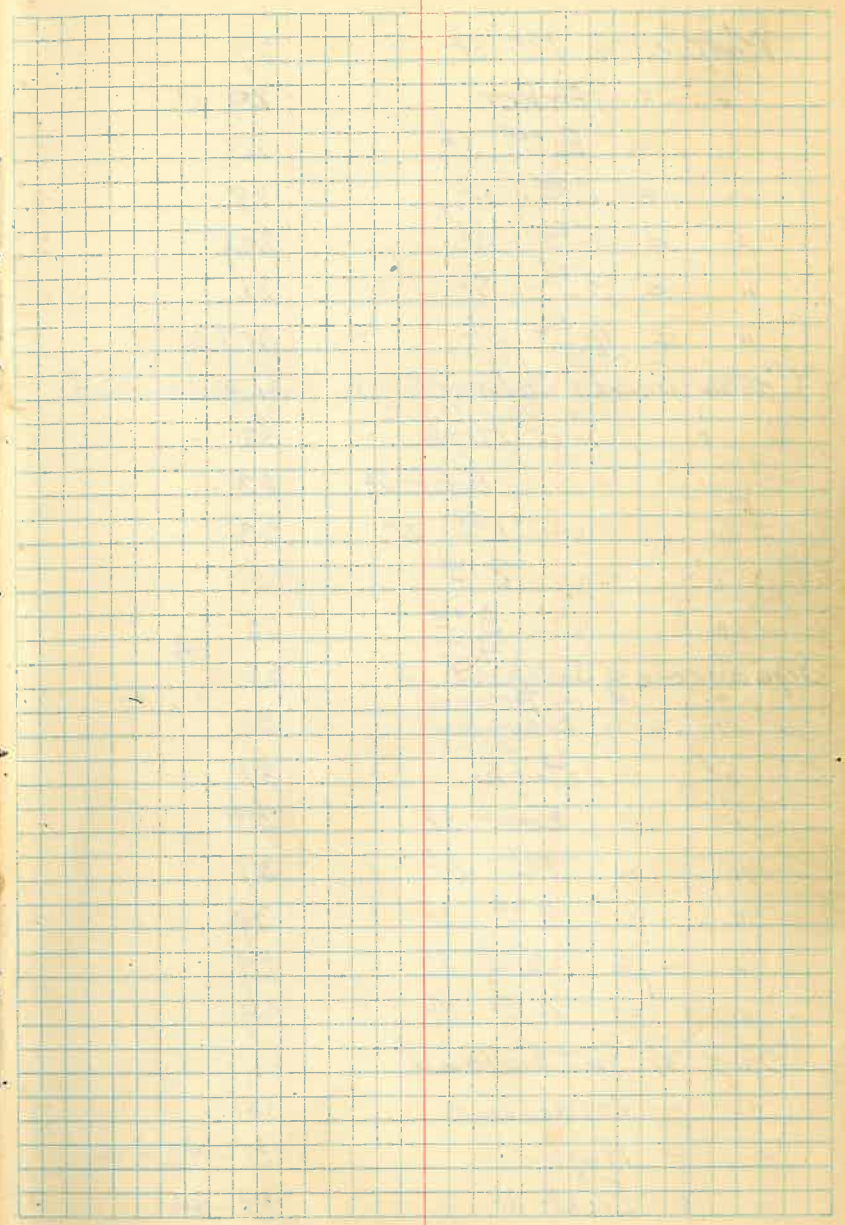
0
1
2
3
4
5
6
7
8
9
10
11
12
13
14
15
16
17
18
19
20
21
22
23
24
25
26
27
28
29
30
31
32
33
34
35
36
37
38
39
40

Index.

page:

E.W. Streets

South & Fegan	13-14
" & 2 nd	13-14
" & 3 rd	15-
" & 5 th	15-
" & 10 th	15-
" & 7 th	17-
Monroe & 2 nd	17-
" & 4 th	17-
" & 5 th	19
" & 6 th	19
" & 7 th	19-20
Ash & High	21-
" & East St	21-
" & Parker	21-
" & 2 nd St.	23-
" & 3 rd	23.
" & 4 th St.	23
" & 5 th St.	25
" & 6 th St.	25.
" & 7 th St.	25
Maple & Sutherland	25.
" & Devereux	27
" & High	27
" & East St.	27
" & Hill St.	— 26



Maple & 1 st St.	27.
" & Parker	29.
" & 2 nd St.	29.
" & 3 rd St.	29.
" & 4 th St.	29.6
" & 5 th St.	31.
" & 6 th St.	31.81
" & 7 th St.	31.7
Cottonwood & Sutherland	31 & 35
" " ^{Devereux} High	31
" " High	33.
" " East St	33
" " 1 st St.	33.
" " 2 nd	35
" " 3 rd	35
" " 4 th	34
Sycamore & Sutherland	35
" & Broad	35 36 70
" & Devereux	35
" & Hill St	84
" & High	37
" & East St	37
" & 1 st St	37
" & 2 nd St	39
" & 3 rd St	39
" & 4 th St	39
Oak & Sutherland	41
" & Devereux	41
" & High	41 - 42 - 46
" & East St.	43 - 44
" & Hill St ^{Re-Established & Rev.} _{Jan 23 1924} _{M.A.E.}	42

Cottonwood & S. Broad page 32

Oak & 3 rd St.	44
Oak & 1 st St.	43
" & 4 th St.	43-44
" & 5 th St.	43
Cedar & Sutherland	45
" & Devereux	45
" & High St.	46
" & East St.	45
" & 1 st St.	47
" & 4 th St.	47
" & 3 rd St.	47 & 109 & 110
Mesquite & Sutherland	47
" & Broad	48
" & Devereux	47
" & High	49
" & East	49
" & 1 st .	49
" & 4 th	49
Bailey & Sutherland	51
" & Hill St	52
" & Devereux	51
" & East St.	51
" & 1 st St.	51
" & 4 th	53
" & 6 th	53
Kline & Devereux	53
" & 1 st St. - High St	53-54
" & 4 th	55
Apache & Sutherland	55
" & Devereux St	57

Cedar & Broad.	- page 46
Cedar & Pine	- " 48
Cedar & FOURTH	- Page 109 & 110
Cedar & FIFTH	- Page 109 & 110

APACHE & 3 RD ST.	PAGE 134
KLINE & 3 RD ST	PAGE 135
KLINE & 2 ND ST	PAGE 136

Apache & High	57.
" & East.	57.
" & 1 st st.	57.
" & 4 th st.	57. & 114
Tonto & Sutherland	59
" & Devereux	59
" & High	59
" & 1 st st.	59
" & 4 th st.	59
Yuma & Hill st.	61
" & Broad st.	61 → 62
" & Devereux	61
" & High	61
" & 1 st st.	61
" & 2 nd st.	61
" & 3 rd	63
" & 4 th	63
Mojave and High	63
Mesa and High	63
North & Sutherland	65
North & Devereux	65
North & High	65
North & East st.	67.

Continued p. 9

APACHE & FIFTH 8-19-77 PAGE 111 & 112

→ TONTO & 2ND - 1/2" REBAR 1-15-86 PAGE 127

continued

S. Broad St. Base line end
- S. line Globe Turn Site, 69-

" + sycamore 70
" Cottonwood 70

Numbered from N.E.S.

N. Broad & Euclid 62
N. Broad St. - Mon N=1- 74
" " " Mon N=2 74
" " " Mon N=3 75
" " " " N=4 72

Willow and Euclid. 80

ΔCP-4a 119-120
T.IN. R.15E $\frac{25}{36}$ | 27 T.IN. R.15/2E
SEC. COR. $\frac{36}{34}$ (HOSPITAL COR.) 121 & 122
SEC. COR. $\frac{20}{26}$ | $\frac{18}{25}$ T.IN. R.15E 125 & 126
(BANKERS AVE)
ΔG-11 129
(HORN)
ΔMM-4 130
U.S. HWY. 60 DRIVE-IN THEATER B.M. 131
* REF. SEC. COR. $\frac{16}{21}$ | $\frac{15}{22}$ (HOOPES) 132

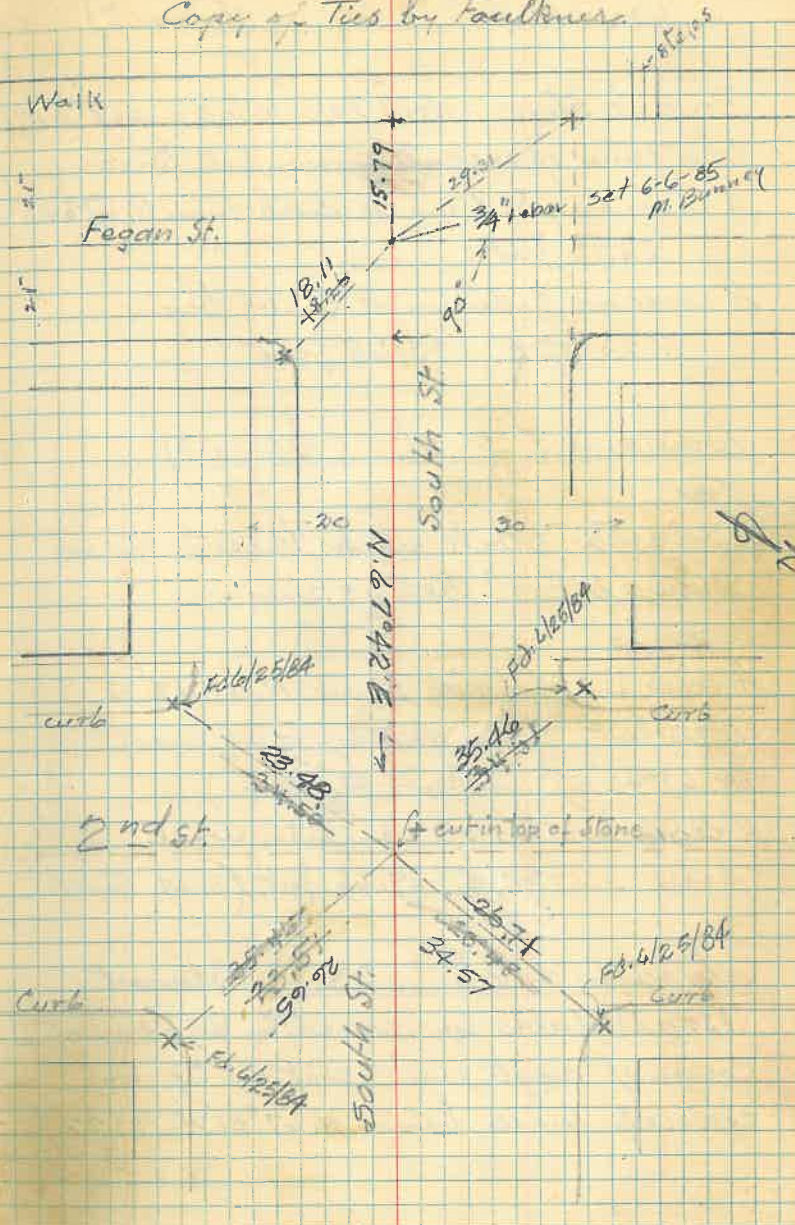
CONTINUED PG. 11

1/4 COR. @ MATLOCKS GAS PLANT	133
Δ STA G-17 (PK) @ ENTRANCE TO OLD HIGHWAY PARK	137
HUNTER'S POINT "C"	138
	139
RE-ESTABLISH & REF. N.W. COR. GLOBE TOWNSITE	140

South + Fegan Streets.

South + 2nd st. (Faulkner)

Copy of Ties by Faulkner



South + 3rd St. (Stewart)

Dacite Stone - drill hole in top - set at
the time of executing Trenchite Drains.

A cross on sidewalk curb bears N. 67° 4' W.
32.92 feet.

A cross on sidewalk curb bears
N. 23° 32' E. 33.68 feet.

South + 5th St. (Stewart)

Concrete blocks with brass tube in
center set 8" below surface.

A cross in M.H. rim bears N. 67° 42' E.
1.72 feet; (Also another cross bears
N. 67° 42' E. 3.00 feet - Faulkner)

A cross on top of concrete wall
bears N. 67° 42' E. 29.66 feet. (29.62 Faulkner)

South + 6th St. Stewart.

Brass tube in concrete pavement.
Corner of angle iron post on top of
concrete wall bears N. 67° 01' W 43.22 ft.

South & 7th St. (Stewart)
 Dacite stone. Drill hole in top-
 set at time of executing survey of
 Town site.
 No bearings available.

Monroe and 2nd St. (Stewart)
 Point on M.H. lid. Across on M.H. rim
 bears S. 22° 18' E. 1.75 ft.
 Across on M.H. rim bears N. 22° 18' W. 0.40 ft.
 Across on side walk curb bears
 N. 22° 14' E. 33.44 ft. 3495 new +
 Across on side walk curb bears
 S. 67° 38' E. 33.60 ft.

Monroe & 4th St.

- ✓ Brass tube in concrete pavement.
- ✓ Cross on side walk curb bears
 N. 25° 32' E. 33.91 ft. 33.64 P.F. 4/27/71
33.58 P.F. 9/23/66
33.75 4/25/84 R.E.
- ✓ Cross on sidewalk curb bears
 N. 67° 45' W. 33.11 ft. P.F. 33.44 4/25/84 R.E.
33.17 P.F. 9/22/66
- ✓ Cross on M.H. rim bears S. 67° 42' W. 4.31 ft.
 Rusty shiner on Street light Pole, facing intersection. SE 40.75 → SPACING!
SE, 41.67
- " + CHISELED IN TOP 6" DIAM. PIPE FILLED W/ANKER. GUARD RAIL
- S. 3° 1' W., (30.77) 4/25/84 R.E.

Rough marks 10 1/2 ft East center M.H.

Old cross taken out for light post

Ash & High St. (Stewart)

Pt. falls on M.H. lid.

Cross on sidewalk curb bears

N. 21° 41' E. - 30.04 ft.

Cross on sidewalk curb bears

S. 24° 48' W. - 29.88.

Cross on sidewalk curb bears

N. 77° 17' W. 35.12.

Cross on M.H. rim - N. 67° 42' E. - 0.34

Cross on M.H. rim S. 67° 42' W. - 1.865

} 2.205

Ash & East. (Stewart)

Brass tube in con-pavement.

Cross on sidewalk curb N. 31° 58' E. 34.63

Cross " " " " S. 78° 44' E. 36.42

Cross " " " " S. 24° 01' W. 29.63

Cross " " " " N. 76° 22' W. 34.56

Cross on M.H. rim - S. 67° 42' W. 1.20

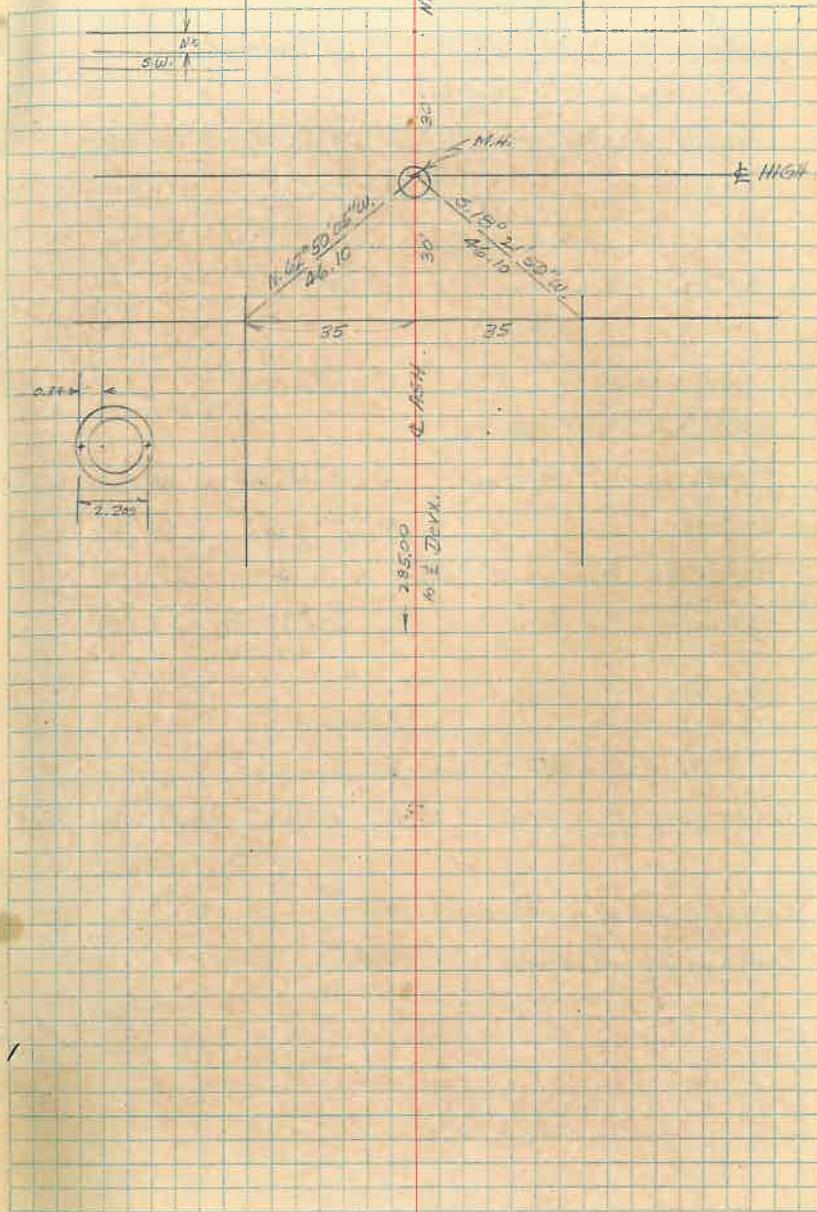
Ash & Parker. (Stewart)

Pt. on M.H. cover

Cross on M.H. rim N. 67° 42' E. 1.43

Cross on sidewalk curb N. 69° 34' W. 29.52

Cross " " " " N. 15° 49' E. 25.89



Ash + 2nd St. Stewart

Pt. on M.H. cover

Cross on M.H. rim S. 67° 42' W. 0.80

Cross " " " N. 67° 42' E. 0.97

Cross on sidewalk curb N. 22° 18' W. 20.00

Cross " " " S. 68° 34' E. 32.67

Ash + 3rd St. (Stewart)

Pt. on M.H. cover

Cross on M.H. rim S. 67° 42' W. 0.93

Cross " " " N. 67° 42' E. 0.76

Cross on sidewalk curb N. 21° 49' E. 29.18

Cross " " " S. 67° 39' E. 32.88

Ash + 4th St. (Stewart)

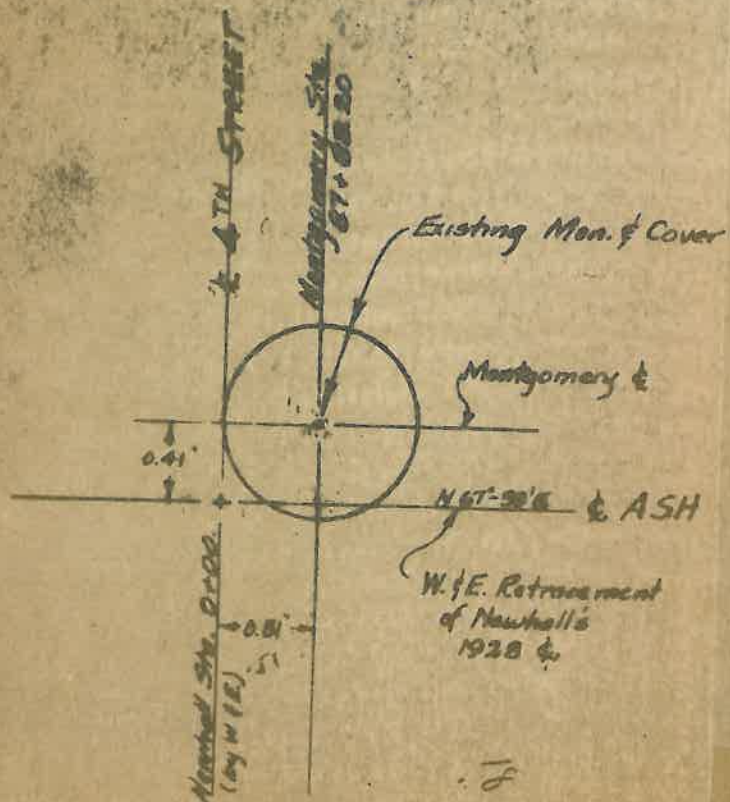
Pt. in basement

Cross on M.H. rim S. 67° 42' W. 5.23

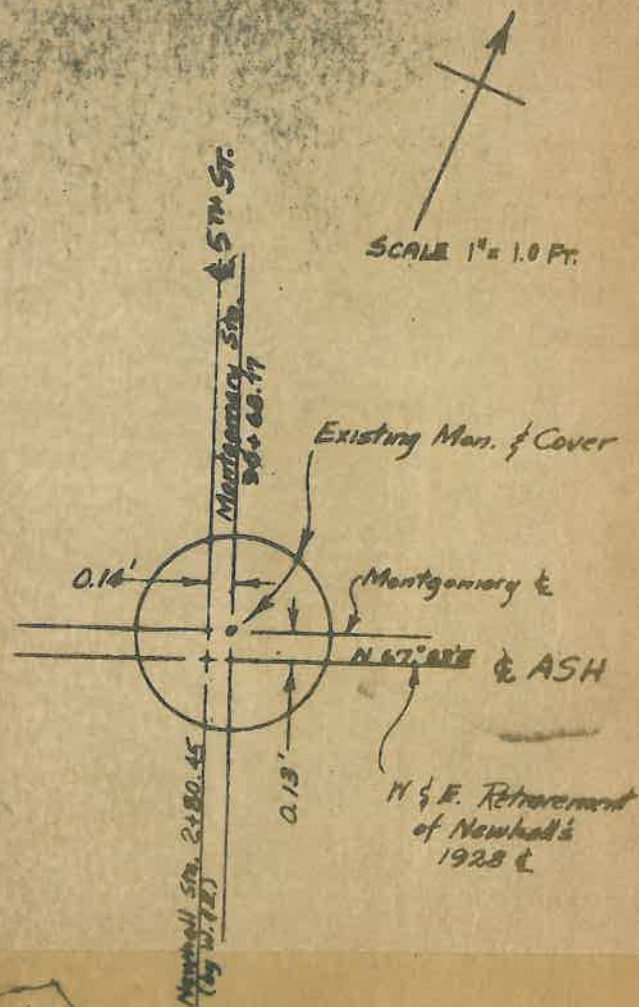
(Font Rines)

Cross on sidewalk curb - NE³ 30.68Corner Concrete wall NW⁴ 41.05

INTERSECTION MONUMENTS
 Considered to be identical in location
 to those monuments set by J. Montgomery
 in 1948, as per Tr. No. 4-191-8



Job 62053
 1/26/48 P.D.S.



Ash & 5th St.

Brass tube in con. block 9" below surface
 Cross on sidewalk curb N. 78° 41' W. 35.90
 Cross top of con. wall N. 24° 19' E 43.39
 Cross on sidewalk S.W. 40.64
 Cross on end of wall S.E. cor. 26.25 ?

Ash & 6th St.

Copper pin in drill steel.

Cross on W. face con. wall S. 67° 00' E. 42.67
 Cross on top con. retaining wall S. 33° 51' W. (27.03 ?
 26.95

Ash & 7th St. See Job 71012

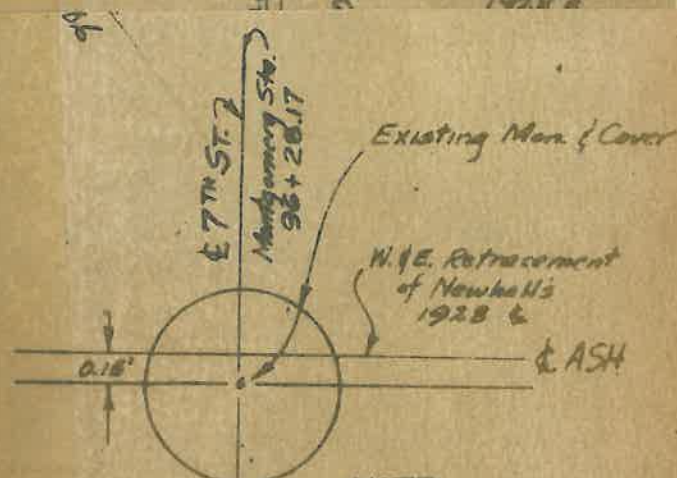
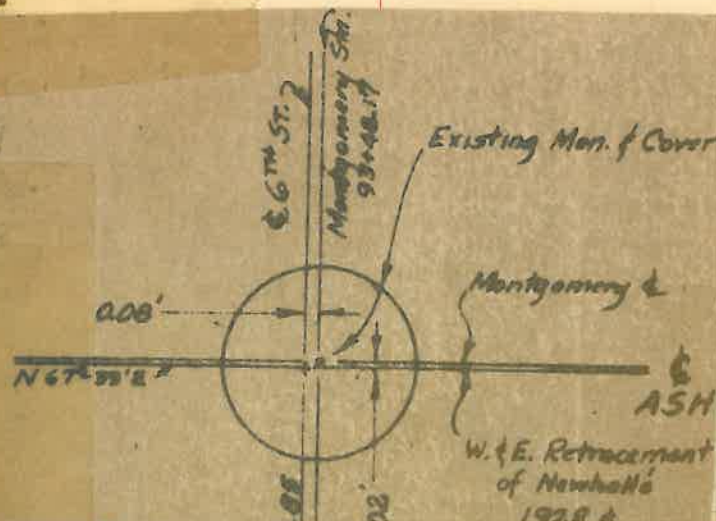
Brass tube in con. block.

† on Conc. Curb, S. 12° 14' W, 40.61
 Iron pin in ground S. 22° 42' W 49.79
 † on Conc. Curb, S. 56° 07' E, 40.52. † marks are 49.57, 5.67° 59' W,
 Iron " " " N. 22° 42' E 48.61 from curb other
 † on Sidewalk to Block Cor. S. 18° 24' W, 46.10; Ash being 35' + 35' = 70'

Maple & Sutherland Sts. (Stewart)

Brass tube in con. pavement.

Cross on sidewalk curb S. 22° 18' E. 19.00
 Cross " " S. 67° 42' W. 11.33.

NOTE:

No attempt was made by W. & E. to re-establish the & of 7th St. because org. mon. at 7th & Monroe was found disturbed.

P. & B.

Ash
Br
Cross
Cross
Cross
Cross

Ash
Copp
Cross
Cross

Ash
Br
Iron
Iron

Maple
Br
Cross
Cross



Foullmer. →

Sutherland

Maple

Hill st.

Evart tube

side track



Maple & Devereux. ^{fd. 0.50 copper rivet}
 Bantew 10-83

Copper pin in hollow steel.

Cross on sidewalk curb S. 21° 33' W. 35.53

Cross " " " " N. 74° 0' W. 36.01

Cross " " " " S. 65° 35' E. 34.33

Cross on M.H. rim S. 35° 14' W. 10.51

Maple & High St. Fl 5-14-90

Copper pin in hollow drill steel ✓ (FD)

Cross on sidewalk curb S. 36° 59' W. 42.72 (FD) ✓

TOP CTR FIRE HYDRANT TO NE 44.48 ✓

Cross on sidewalk curb S. 72° 40' E. 33.39 (FD)

Intersection of back edges of SW West Corner = 45.22 (meas.)

Maple & East St.

Copper pin in hollow drill steel.

Cross on sidewalk curb S. 39° 52' W. 39.22 (FD)

Cross " " " " S. 63° 01' E. 16.58 (FD)

Cross on M.H. rim S. 58° 10' W. 8.63

Set Cross in WPA Emblem, West Cor Sidewalk N. 77° 05' W. 44.20

Set " on M.H. Ring, north cor. N. 25° 19' E. 40.14

Maple & 1st St.

Head of spike in paint.

Cross on M.H. rim S. 67° 42' W. 0.14

Cross " " " " S. 67° 42' W. 2.06

Cross on sidewalk curb N. 15° 42' E. 41.19

FD RR spike flush w/ptg.

SEE PAGE 107 FOR REFERENCE TO FD. SQUARE
 STEEL BAR W/ SCREW HEAD IN TOP. DTD 6-11-26

Maple & Parker.

Copper pin in hollow drill steel.

Cross on M.H. rim N. 22° 18' W 1.56

Cross " " " N. 22° 18' W. 2.78

Cross on corner top concrete wall.

25" above ground S. 6° E 35.05

Cross on sidewalk curb S. 6° W. 34.80

Maple & 2nd St. (Stewart)

Copper pin in hollow drill steel in pavement.

Cross on top of con. wall S. 67° 40' W 43.73

Cross on M.H. rim North by 5.14 (Faultline)

Maple & 3rd St

Head of spike in Bl. pavement.

Cross on M.H. rim S. 22° 18' E 0.10

Cross " " " S. 22° 18' E 1.90

Cross on sidewalk curb N. 72° 24' W 40.17

Maple & 4th

Copper pin in hollow drill steel.

Cross in M.H. rim S. 67° 42' W 4.64

Cross in NE. con. Valve box N. 38° 42' E 8.30

NOTE: SEE PAGE 105 FOR REFERENCE @ MAPLE

& PARKER DATED OCTOBER 13, 1975

SEE PAGE 107 FOR REFERENCE TO COPPER PIN IN HOLLOW

DRILL STEEL (1st MAPLE & SECOND) DATED 6-11-76SEE PAGE 120 FOR REFERENCE TO COPPER PIN
IN HOLLOW DRILL STEEL.

Maple & 5th St.

Copper pin in hollow drill steel.

Cross on face & end of Con. wall N. 82° 27' W. 42.60

Center top of F.P. S. 66° 17' E. 40.79

Concrete block with brass tube N. 67° 42' E. 30.00

See pg. 212

Maple & 6th St. Center M.H. over N. - 5.20

Con. block with brass tube (Iron bar set over point)

Nail in tin in Elec. L.P. S. to W. 31.11

Inside line of Con. walk. N. to W. extended S. 44° - 28.11

Maple & 7th St.

Brass tube in con. block, 8" below surface.

Mound of stones N. to W. - 3.0

See pg. 257

Cottonwood & Sutherland Sts. ^{Al 10-43}

Cross in sidewalk curb N. 25° 06' E. 27.98

Cross " " " " S. 59° 54' E. 28.91

Cross in M.H. rim S. 22° 18' E. 6.00.

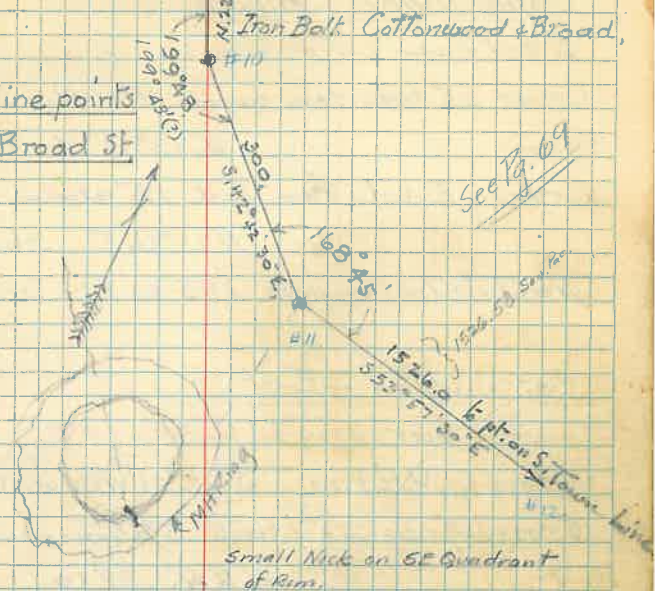
N. Bolt over 10-43 ^{replaced by J. Ferguson}Cottonwood & Devereux.

steel bar.

Cross SE side con. wall N. 82° 27' W. 30.85

Cross SE " " " N. 28° 07' E. 21.57

Cross top " " " S. 53° 06' E. 33.56

Base line points
along S. Broad StCottonwood and Broad. - Iron bolt.S.E. ^W + in curb $\frac{1}{2}$ foot S. of F.P. - 54.20N.E. ^W + " " $1\frac{1}{4}$ ft. top Light post 40.04N.W. ^W + " " $1\frac{1}{4}$ ft. S. of Light post 60.77Replaced in 7/24 x 6" Rebar flush. Pvg.
New Ties. Aug. 23-44 J.M. & Char. Thompson.

+ in round curb at SW cor. 38.50

old + E. face wall - NW cor 30.85

old + S. face wall NE cor 21.51

New + Top of wall SE cor 33.97

Cottonwood & High.

Steel bar

Cross S.E. side cen. wall 4" below top

N. 73° 39' W. 39.09

Cross S.E. side cen. wall 12" above ground

N 23° 26' E 36.16

Nail in tin on pole S 45° 20' E. 24.34

Cottonwood & East st. fd Bridge

10-83

FD steel bar - 1" below AC Post 1976

Cross in M.H. rim S. 42° 31' W. 6.80

FD Cross on face cor. of wall 3" above walk

N 6 W. 38.59 Mar. 02FD. W. 11° 12' 30" E. 46.82

Cross top of wall at Iron post N 6 E. 36.82

Cottonwood & 1st St.

Head of Bolt.

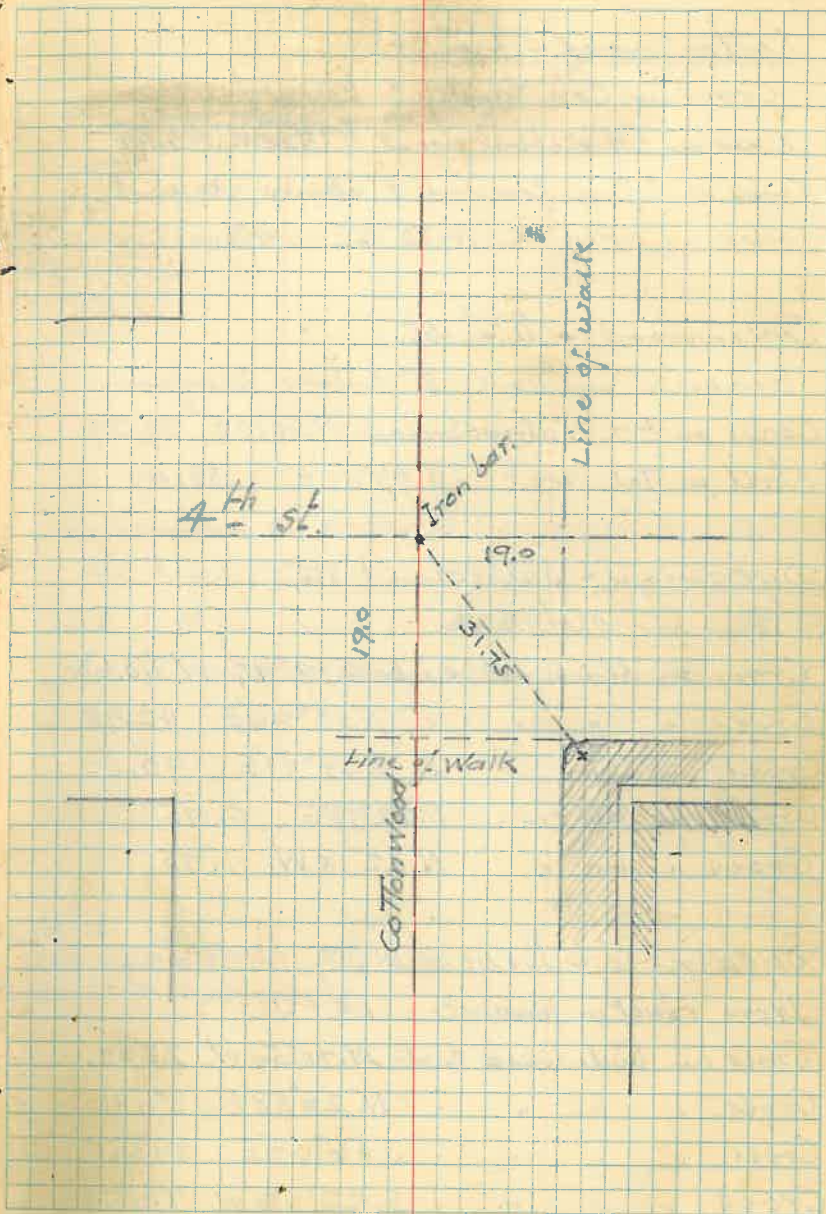
Cross on Sidewalk curb N. 54° 46' W 36.57 ✓

* Cross " " " " N. 23° 43' E. 29.56 ✓

Cross " " " " S. 67° 47' E. 29.40

Cross on M.H. rim N. 67° 42' E. 2.39

Cross on M.H. rim N. 67° 42' E. 3.56



Cottonwood + 2nd St

Cross in Con. Block 8" below surface
 cross on F.H. 4" above ground N. 68° 30' W. 33.99
 Cross on S. face Con. wall 8" above ground
 N. 22° 12' E. 43.00

Cottonwood + 3rd St.

Brass in Con. block 8" below surface
 Cross on F.H. 6" above surface N. 35° 10' E. 29.39
 Nail in Tel. post S. 73° 47' E. 35.09.

Sycamore + Sutherland St.

Pin on M.H. lid.
 Cross on sidewalk curb S. 19° 49' W. 40.68
 Cross " " " " N. 03° 26' E. 42.98
 Cross " " " " S. 64° 41' E. 40.50
 Cross on M.H. rim S. 22° 18' E. 0.175
 Cross " " " " N. 22° 18' W. 1.75

Sycamore + Devereux St. ¹⁰⁻⁸³ ^{called in} ^{Copper River}
 Iron rivet in pavement. @ Edge Concr M.H. Encasement

Cross on sidewalk curb N. 71° 54' W. 28.02
 Cross " " " " N. 26° 58' E. 27.91
 Cross " " " " S. 56° 00' E. 34.41
 Cross " " " " S. 22° 56' W. 41.70
 Cross on M.H. rim N. 22° 18' W. 0.865

Cor. Iron fence pipe post SW-

Sycamore + Broad St.

N.E. + in walk 52.05
 S.E. + in walk 46.27
 West^{ly} center of traffic button 37.72

Sycamore & High Sts.

Iron rivet in pav. mt.

Cross on Side walk curb S. 61° 20' E 34.75

Cross " " " S. 29° 27' W 44.23

Cross on M.H. rim S. 61° 20' E 4.60

Sycamore & East Sts.

Copper pin in hollow drill steel.

Cross on Side walk curb S. 24° 58' W 32.47

Cross on Side walk N. 20° 07' E 35.67

Cross on Side walk curb S. 5 E. 30.63

Sycamore & 1st Sts.

Iron Rivet in pav. mt.

Cross on M.H. rim S 22° 21' E 0.24

Cross " " " S. 22° 21' E 2.25

Cross on Side walk curb S. 83° 51' E 35.04

Cross " " " S. 28° 07' W 27.73

Cross " " " N. 79° 53' W 38.65

Cross " " " N. 28° 00' E 32.52

Note. The point where the E. of 1st St.extended from the center of 1st & CottonwoodSts. with a backsight on center of 1st and

Maple Sts intersects E. of Sycamore

bears N. 67° 39' E 0.62 feet.

Sycamore & 2nd St.

Paint falls on M.H. lid

Cross on M.H. rim S. 67° 39' W. 1.18

Cross " " " N. 67° 39' E ^{0.77} ~~0.13~~ ^{Fault line} ~~Stewart~~

Cross on W. face Con. wall 2" above surface

S. 66° E 41.13

Cross on S.E. side of Con. wall 1.25 above ground

N. 23° 27' E 42.97

Sycamore & 3rd St.

Iron rivet in paint.

Cross in M.H. rim S. 67° 39' W. 0.14 ✓

Cross " " " S. 67° 39' W 2.14

Cross on Side walk emb. N. 75° 34' W 34.96

Cross on S.W. side Con. wall N. 20° 33' E 43.09

Sycamore & 4th St.

Paint falls on M.H. lid.

Cross on M.H. rim N. 22° 21' W 0.60

Cross " " " S. 22° 21' E 1.55

Cross on S.W. face of Con. Wall N. 31° 58' E 43.00

Cross on F.H. 8" above ground N. 67° 36' W. 29.24

Nail in iron disk on fence post

S. 66° 42' E 41.62

118

.77

255
- 236
29

Oak & Sutherland.

- Iron rivet in part-nt.
- Cross in sidewalk curb S.20°21'W 39.0
- Cross " " " " N.55°35'W 36.6
- Cross " " " " N.18°24'E 35.6
- Cross " " " " S.63°57'E 38.74
- Cross on M.H. rim S.22°18'E 0.175

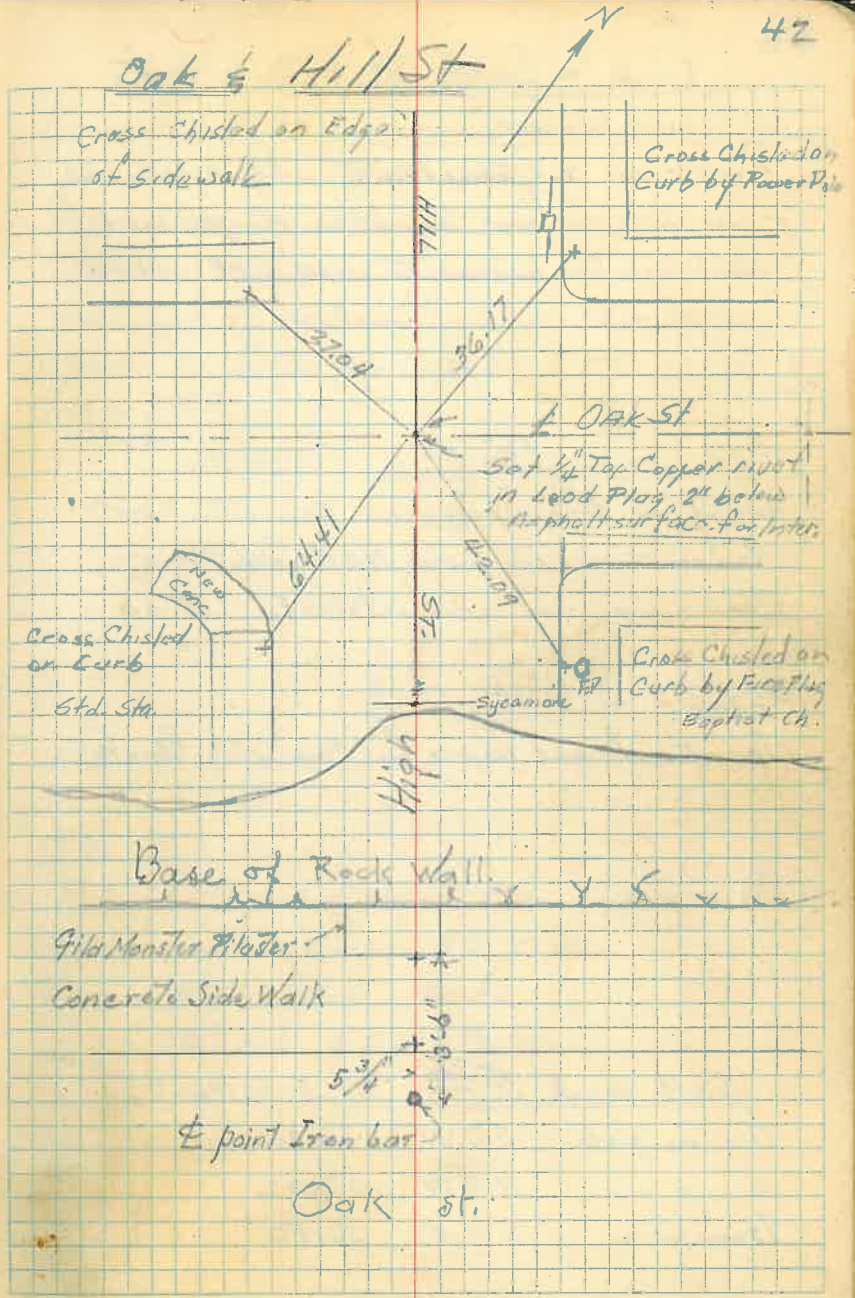
Oak & Severn

- pt. falls on M.H. lid.
- Cross on sidewalk curb S.15°24'W 36.62
- Cross " " " " N.67°00'W 37.89 #1988
- Cross " " " " N.21°08'E 45.81 #1988
- Cross on M.H. rim S.22°18'E 0.99 #1988
- Cross " " " " N.22°18'W 1.03 #1988

Oak & High St.

Iron bar 5 3/4" out from sidewalk
and 3'-6" from cross in pilaster

Oak & Hill St



Oak & East St.

Point in a quartzite stone with
+ on top, below surface of ground.
Cross on top concrete wall S 6 E 44.40

Oak and 1st St.

point is brass pipe in concrete block.
Nail in disk in pole N 54° 26' W. 42.97
Nail " " " N 84° 41' E. 28.00

Oak & 4th St.

Point - brass pipe in concrete block.

Oak and 5th St. (Milton)

Tin in pole S 6 W 32.63
" " " N 6 W 52.92
Iron pole N 6 E 38.50

Oak & East Streets

Forkbar. - Found 1" round iron bar
on top of quartzite stone.

Reset 1" round iron in concrete.

Bottom and south button of reflector
at end of retaining wall West 30.71

Spike in bottle cap in pole N 6 E 42.72

Oak & 3rd St

Rubble Wall

Oak St.

30.3

30.0

3rd St

Oak & 4th St.Milton

Pt. is 0.03 West of copper tubing in con. block.

Cross on cor. con wall. N 6 E 72.88

Tin in pole S 6 E 30.52

" " Stub pole S 6 W 37.50

* Cedar & Sutherland.

Fd. 8-17-88

- Iron rivet in black pavement
 + on Side walk - $S. 16^{\circ} 27' W.$ 35.19
 + on " " curb $S. 58^{\circ} 24' E.$ 34.48
 + on N.E. side of stone wall 10" above ground
 $N. 61^{\circ} 40' W.$ 48.23.
 + on MH rim $S. 22^{\circ} 18' E.$ 3.92

Cedar & Devereux.

Iron rivet in Bl. pavement. Fd 8-17-88

- + on Side walk $S. 19^{\circ} 06' W.$ 36.60
 + " " ^{Cor. of Sidewalk SE} $S. 57^{\circ} 53' E.$ ~~35.08~~ 36.07
 + " MH rim $S. 05^{\circ} 06' W.$ 4.76 ~~4.72~~ ^{317/66} 71.6
 + on Rounded Retain. Wall Cor. 3" abv. SW, 46.00' NE.

Cedar & East St.

- 1/2" REBAR SET 5-9-98
 Concrete steel bar in ground
 + on NE side Con. wall - 13" above ground
 $N. 59^{\circ} 00' W.$ 48.07
 Set Nail + Bottle Cap

(Faulkner)

South face of retaining wall on Cedar

- Top of wall - $W. 4^{\circ}$ 24.67
 3/16" Galv. + on Water Valve Box, SE, 13.71
 15" abv. grd.
 "PK Nail in Pole SE 54.94 NEW STOB
 Cauce Nail @ 15" 14" TAG IN Pole to SE - 34.87 5-9-98 Bunker
 + on Top of Ret. Wall, SW, No. of Cedar, 17.70 VOK 5-9-98
 NE Cor. Frame Garage SW, 47.98 ERB
 TOP FIRE HYD - SE 38.29 5-9-98

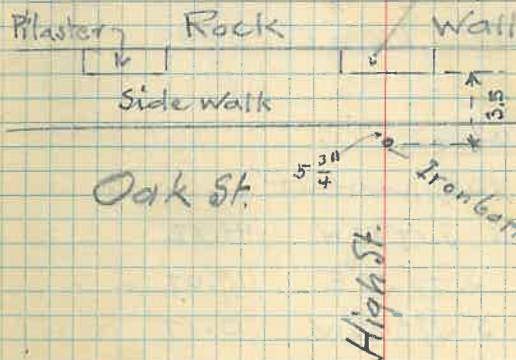
Cedar & Broad St. + cut in pavement

- + in curb S.E. 58.25
 + " " N.E. 56.84
 + " " N.W. 54.81
 + " " S.W. 58.53

Cedar & High Sts.

Drill steel 6" below surface - set in line of south face rock retaining wall. Distance 30 ft.

Oak & High St.



Cedar & 1st St.

Steel bar in ground.

An iron pin $\frac{5}{8}$ " at corner of CornwallN. $67^{\circ}06'W$. 42.07Nail in iron dirt in pole. N. $18^{\circ}29'E$ 28.74Cedar & 4th

Drill steel in ground. SEE Pg. 109

Mesquite & Sutherland

Steel bar set in concrete

- + in M.H. rim S. $22^{\circ}18'E$ 2.75
- + top of Cornwall S. $31^{\circ}12'W$ 36.59
- + " " " " N. $75^{\circ}39'W$ 38.42
- + sidewalk curb S. $66^{\circ}30'E$ 34.48

Mesquite & Devaux

Iron rivet in Bl. paint

- + NE side Cornwall S. $17^{\circ}52'W$ 41.82
- + Corn. valve box S. $77^{\circ}52'E$ 19.07
- + M.H. rim S. $67^{\circ}42'W$ 0.17
- + M.H. rim S. $67^{\circ}42'W$ 2.19

Cedar & 3rdIron bar 1 ft. below surface with $\frac{1}{4}$ " pipe slipped over it.Mesquite & Broad. Copper rivet.

- + cut in ^{Mesquite} curb } 23.32 S.E. ✓
- + Round Iron Post } 29.79 N.E.
- + in curb } 26.03 S.E. Broad St.

Cedar & Pine. Nail in R.R. Track planks.

- + at corner City Hall S.E. 53.17
- + on curb N.E. 43.63
- + in walk N.W. 49.47
- + " " S.W. 44.83

Mesquite & High St.

Pt. Jaws on M.H. Lid.
 + on Sidewalk curb N.32°48'E 28.66
 + on SW face Con. wall S.72°06'E 38.28
 + on NE side Con. block wall S.29°20'W. 39.72
 + on M.H. rim S.67°42'W. 0.41
 + " " " N.67°42'E 0.83

} Pt. 3/17/66
 } S.S.

Mesquite & East St.

Iron rivet in Bl. pavement.
 + NE side Con. garage 10" N.71°13'W. 47.69
 + SW side Con. wall N.28°17'E 39.03
 + on M.H. rim N.59°23'E 13.23

Mesquite & 1st St.

Iron rivet in Bl. pavement.
 + NE face Con. wall S.29°45'W. 42.01
 + on M.H. rim S.73°35'W. 9.82
 + on NE face Con. wall N.71°09'W. 40.76

Found 3/8" Rebar, 10 ft. 0.7' below parikh surf.

Mesquite & 4th St. (Milton) (SEE Pg 111, 112)

Drill Steel. (original)
 Tie in pole SE⁴ 28.98 ✓
 " " " NE⁴ 63.12 ✓
 F.P. - 6" above Surface NW⁴ 53.70 ✓

29.25 paces, 10/21/66

Set Nails 0.93' NW on H.P.H.
 and 1.04' SW on Mesq.

Mesq. & 1st

2 Iron in pole 5' above ground SE - 23.20
 Set. Shiner & Nail, S. Side Pole No. 41919, 2377' SE, 8/17/66
 Set Nail on S. Mesquite 20.00 ft. SE
 Set Nails 1.00' W. of Lot. W.

Mesq. & 4th

Measure: Set Nails 0.106 S. of 1.03 W. → MESQUITE & 4th see Pg 111 & 112
 8-19-77
 Check Lines in 1/2" x 1/2" Post Fence Cor. N.E. " + → 40.53 ✓
 8-19-77
 Findings, N.W., Center of □ stem → 54.00 ✓

* Baily and Sutherland

Copper pin in hollow steel.

+ in iron fence post 1' above top of

concrete wall S. 29° 52' W. 39.59

+ on SW side Con. wall N. 19° 20' E. 45.84

+ on M.H. rim S. 22° 18' E. 4.06

* Baily & Devereux St.

Copper pin in hollow steel.

+ on side walk S. 64° 05' E. 41.40

+ on M.H. rim S. 15° 29' E. 20.20

+ on top bridge abutment S. 89° 11' W. 19.76

Baily & East St.* Steel bar.

Nail in dirt in pole N. 09° 09' E. 47.55

+ on SW side Con. wall 8" above surface

S. 42° 58' E. 86.85

Baily and 1st St.

Steel bar.

Nail in dirt in anchor post S.W. 36.80 ?

" " " light pole S.E. 31.87 ?

* Baily & Hill St.

Nail steel 3" from wedge of pavement

Nail in tire rim pole N. 32.12

+ in M.H. rim N.W. 3.21

+ in con. Con. wall S.E. 44.10

Baily and 4th St. (Milton)

Drill steel set in concrete (by Faulkner)
is 0.13 E. of pt.

+ top of con. wall, East end SW ⁴ ~~39~~ 40.35
Tin in pole SE ⁴ 30.57

Baily & 6th St. (Milton)

Pipe driven in ground disrupted,
set nail for point 0.20 East of pipe

Tin in pole SW 27.25
Pipe fence post SE 43.85
" " " N.E. 42.23

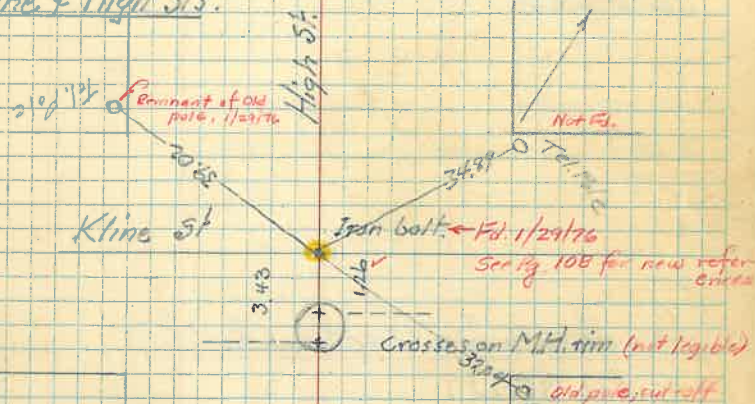
Kline & Devereux St.

Iron rivet in Bl. pavement
+ on M.H. rim S. 22° 18' E. 0.05

Drill steel in ground S. 67° 42' W 11.23
E.s. Devereux & Apache N. 22° 25' W 285.20
E.s. Devereux & Baily S. 22° 17' 45" E 360.00

Kline & 1st St.

Drill steel. (Fd) 1/29/76 See Pg 105 for
new references
to Drill steel

Kline & High Sts.Kline & 1st St.

Kline + 4th St

Drill steel

No ties ^{8/19/77} SEE Page 115 & 116KLINE & 5TH ST

3/4" REBAR (8/19/77)

Page 115 & 116

P.O.L. ON 4TH ST. BETWEEN KLINE & APACHE 117 & 118

CONCR. NAIL

Apache + Sutherland St

Drill steel

Nail in disk in pole S. 67° 00' E 32.47

+ in N.E. side of Con. wall 14" above ground

N. 67° 56' W 41.23

+ on M.H. rim S. 22° 20' E 1.095

Apache + Devereux St.

Iron rivet in pavement.

- + on sidewalk N. 22° 56' E 34.07
 + on Iron fence post S. 23° 44' W. 42.47
 + on MH rim S. 54° 50' W 46.59
 + on curb SE ⁴ 31.72

Apache + High St.

Drill steel.

- + on SW. Face Con. wall N. 22° 33' E 42.58
 Nail in disk in pole S. 67° 39' E 32.62
 " " " " S. 15° 46' W. 33.47

Apache + East.

Drill steel.

Apache + 1st.

Drill steel.

Apache + 4th

Drill steel.

2/19/47
See Page 111

42.47

31.72

10.75

Tonto & Sutherland

Drill steel

- $\frac{1}{2}$ " pipe at fence cor. S. $22^{\circ}43'W$ 42.53
 + on S.E. side Con. wall N. $22^{\circ}09'E$ 43.59
 Nail in disk in pole S. $65^{\circ}40'E$ 33.04

Tonto & Devereux

- Drill steel Reset with $\frac{1}{2}$ " Iron (J.M.)
 + top of Con. wall S. $20^{\circ}57'W$ 42.59
 Nail in disk in pole S. $6^{\circ}E$ 42.40

Tonto & High

point on M.H. lid.

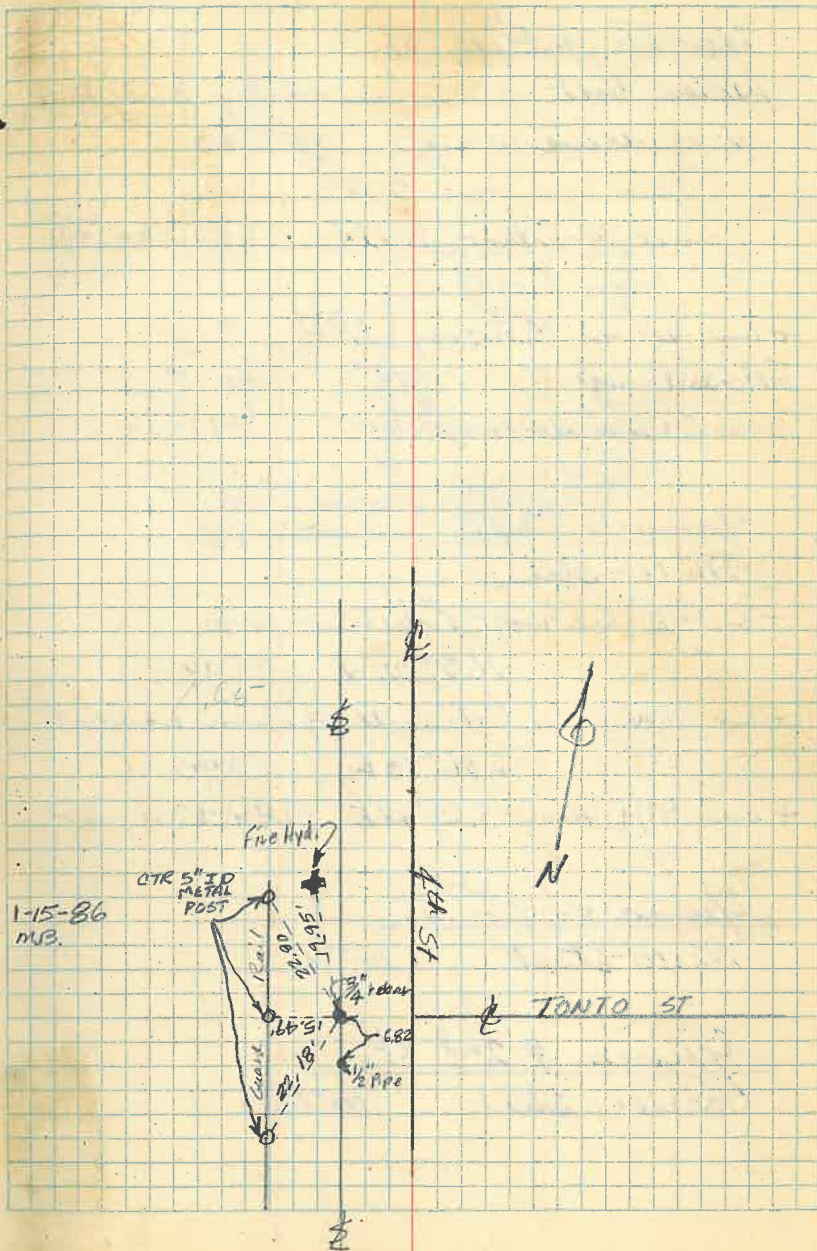
- + on M.H. rim S. $22^{\circ}20'E$ 1.94
 + " " " N. $22^{\circ}20'W$ 0.29
 + on F.H. S. $45^{\circ}23'W$ 32.05
 + on N.W. side Con. wall S. $68^{\circ}27'E$ 42.60

Tonto & 1st St.

Drill steel

Tonto & 4th

Drill steel



Yuma & Hill st.

Iron bolt driven in rocky side hill
N. of driveway. No Ties

Yuma & Devereux (Faulkner)

$\frac{1}{2}$ " Iron bolt.

+ on same M.H. ring N $\frac{64}{-}$	9.16	✓
F.H. - soil ring N.E. $\frac{64}{-}$	40.15	✓
Iron for NW cor. Devereux	42.45	✓

Yuma & High.

Drill steel

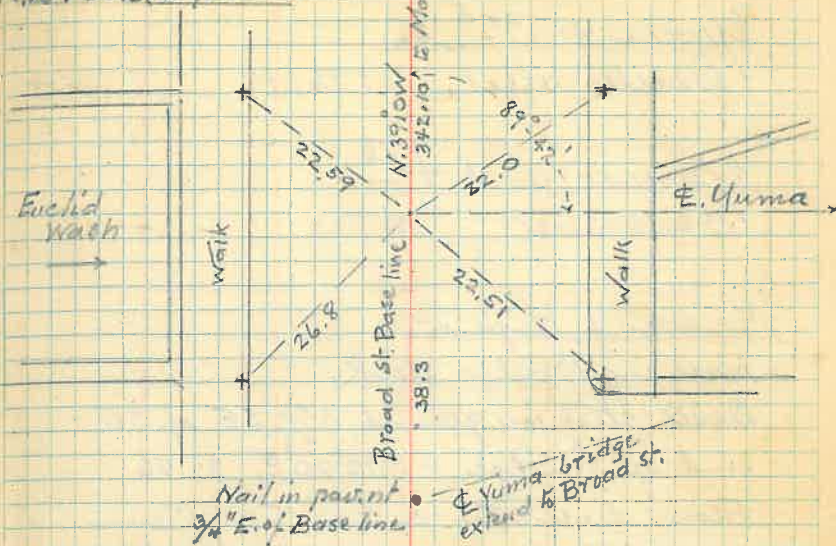
+ on NE face wall 5" below top	N. 37° 27' W	35.79
+ on NW face Con. wall 9" above ground	S 56° 50' E	53.90
+ on M.H. rim	S. 29° 48' E	44.23

Yuma & 1st st.

Drill steel No Ties.

Yuma & 2nd st.

Drill steel No Ties.

N. Broad & Yuma.

Yuma + 3rd st.
Drill steel. No Ties.

Yuma and 4th
Drill steel. No Ties.

Mojave & High St

Nail in Bridge deck.

Drill steel in ground 3 ft. SE. of SE.
end of bridge - $5.22^{\circ} 20' E$. 35.26

From drill steel - a + on top of Con-
wall $N 67^{\circ} 40' E$ 18.20

and + on top Con. wall $S 67^{\circ} 40' W$ 9.65

Mesa and High

Drill steel in pavement

+ in MH rim $N 87^{\circ} 08' W$ 18.74

Top FH. $NW 4$ 36.69

North & Sutherland

Drill steel in pavement

+ on Con. fence post 12" above ground
N. 3° 04' W 36.41

+ on M.H. rim N. 56° 41' E 4.30

Nail in cap in pole S. 74° 14' E 31.38

Drill steel in ground N. 22° 20' W 12.76

+ on face Con. wall 2" above W.P.A.
stamp N.W. 35.41North and Severcut.

Iron rivet in pavement

Nail in disk in pole S. 36° 02' W 35.32

+ on F.H. 4" above ground N. 46° 41' W 25.15

+ on iron fence post 2" above ground
N. 11° 36' E 27.15

Drill steel N. 22° 40' W 11.71

North and High St.

Iron rivet in pavement

Drill steel N. 22° 20' W 10.56

+ on M.H. rim N. 22° 18' E 3.95

Nail in disk in pole S. 25° 08' W 27.27

+ face end Con. wall NW 31.24

North & East St

$1\frac{1}{4}$ " round bar in edge of pavement.

Nail in tin in pole N.W. 29.91

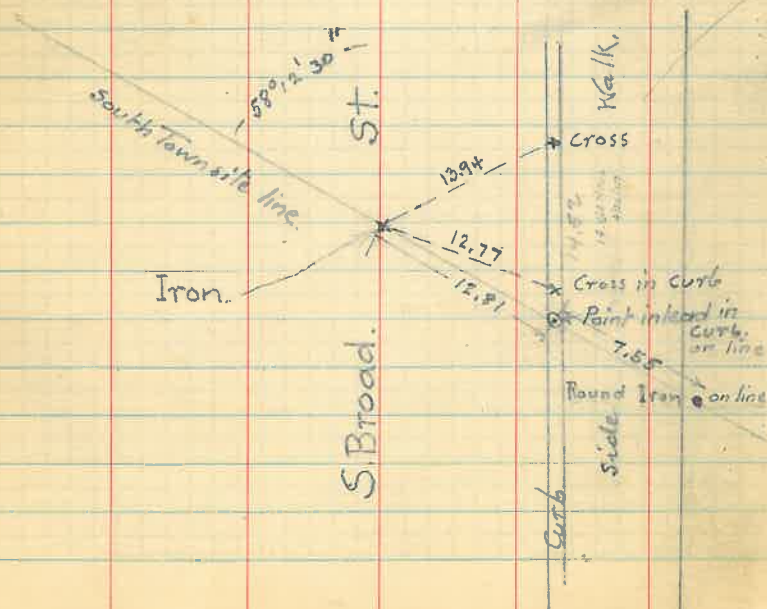
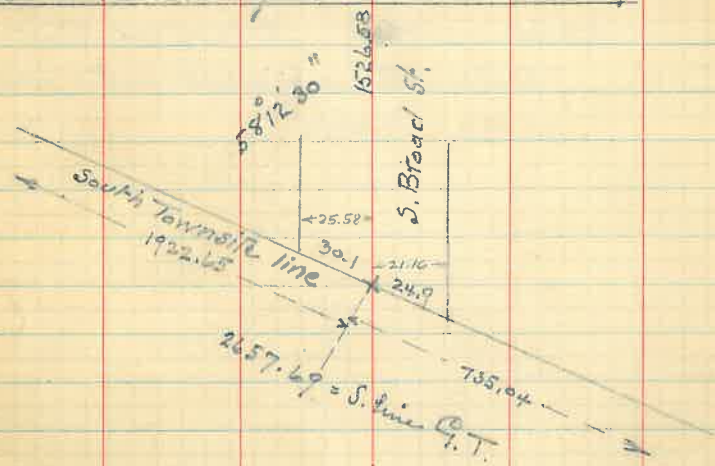
Value out of F.H. S.W. 26.22

Con. Con. capping on Stone Wall

N.W. 34.30

Broad St. points

South Broad St. base line with
South line of Globe Townsite



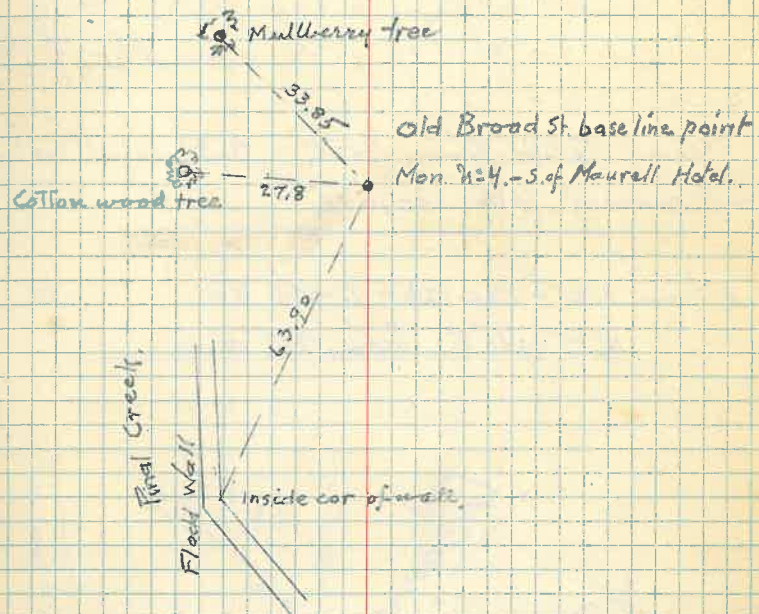
South Broad & Cottonwood
Iron Bolt.

+ in walk NE ^{ly}	40.04
+ " " SE ^{ly}	51.02

South Brod & Sycamore.

+ in walk NE ^{ly}	52.05
+ " " SE ^{ly}	46.27
Center of traffic button W ^{ly}	37.72



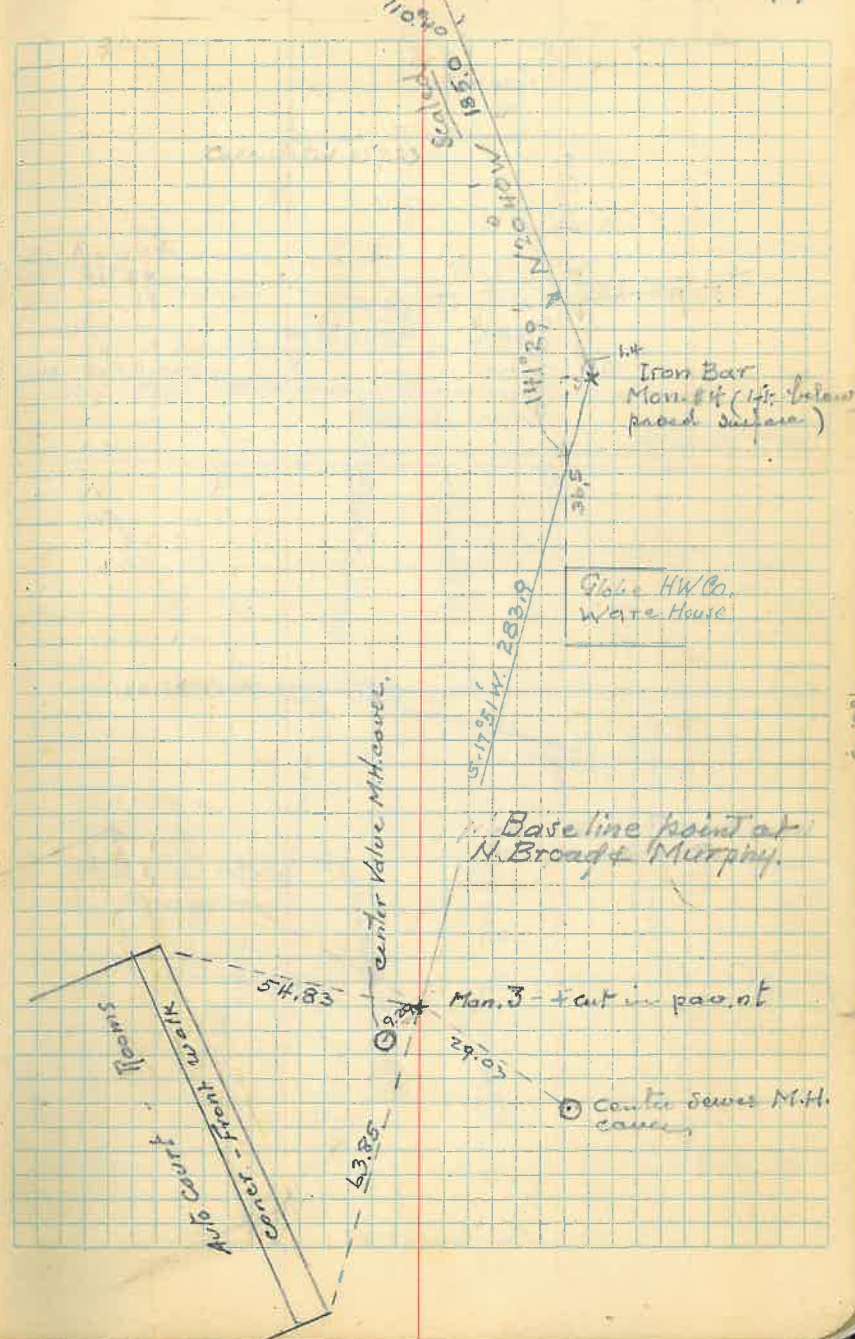
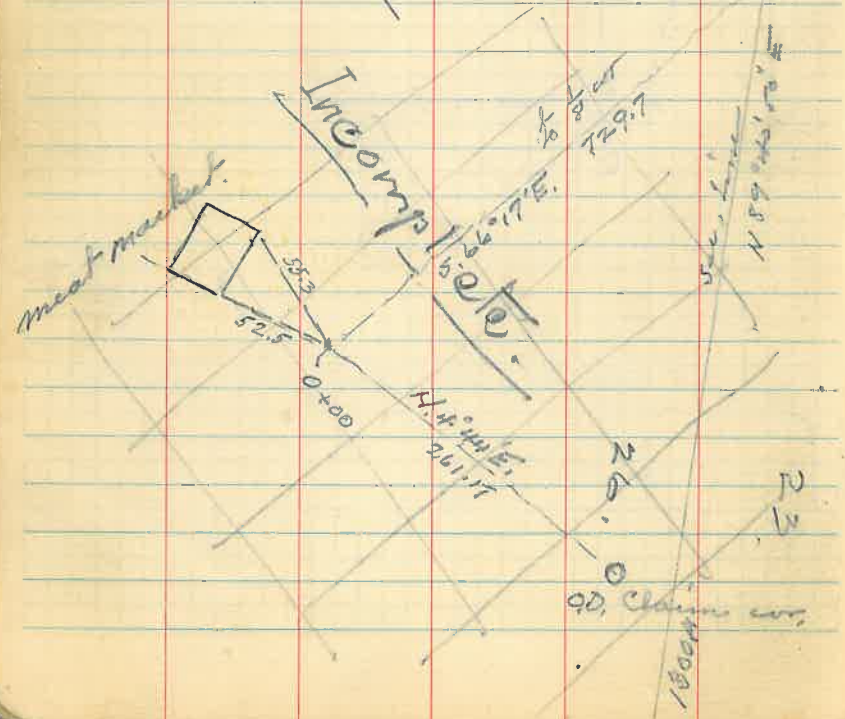


Aug 24 1913
J. M. & Chas P. W.

Run \bar{E} , an sec. line betw. S^{ms} 23
and 26 by N.W. corner (stone) of
26 and 4" pipe & cap (OD) - being
con. set for NW of NW, and NE of NW
Sec. 26

Extend this line east. Set point where
it crosses Hwy 60-70. 71.25

N. line NE $\frac{1}{4}$ Sec. 26-1-15 E = 760
N. 89° 40' 50" E. from O.D. map -



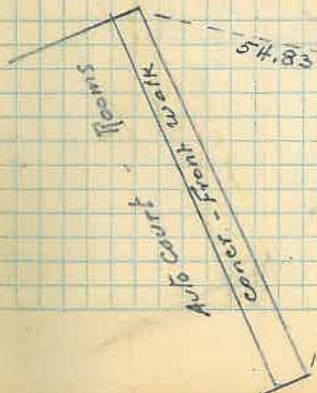
Iron Box
Mortar (1/2" below
paved surface)

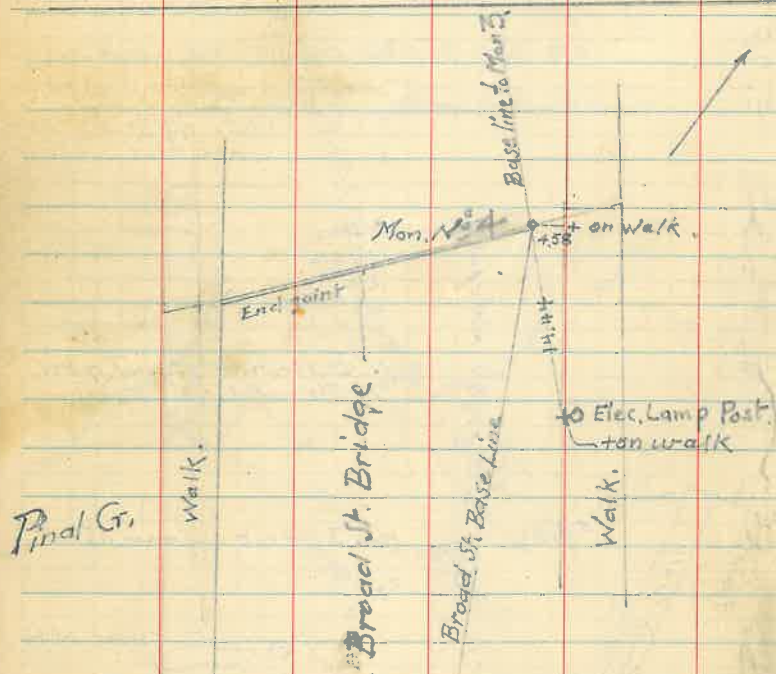
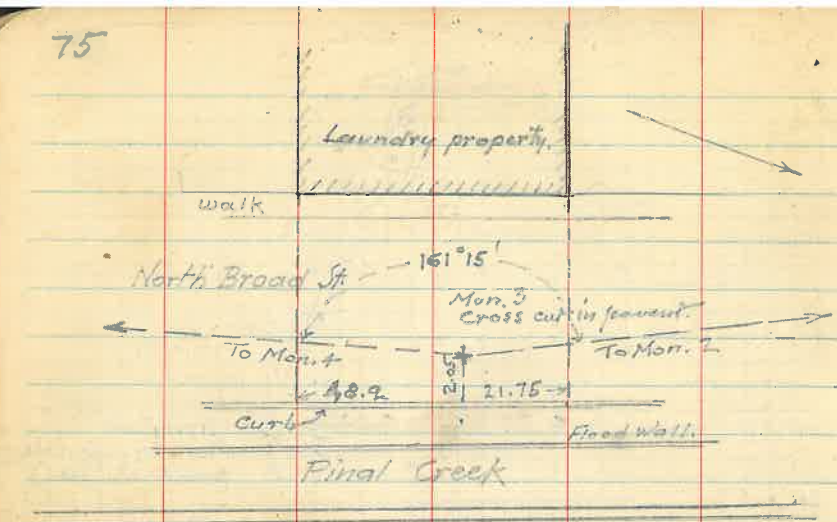
Glacie HW Co.
Water House

Baseline point at
N. Broad & Murphy.

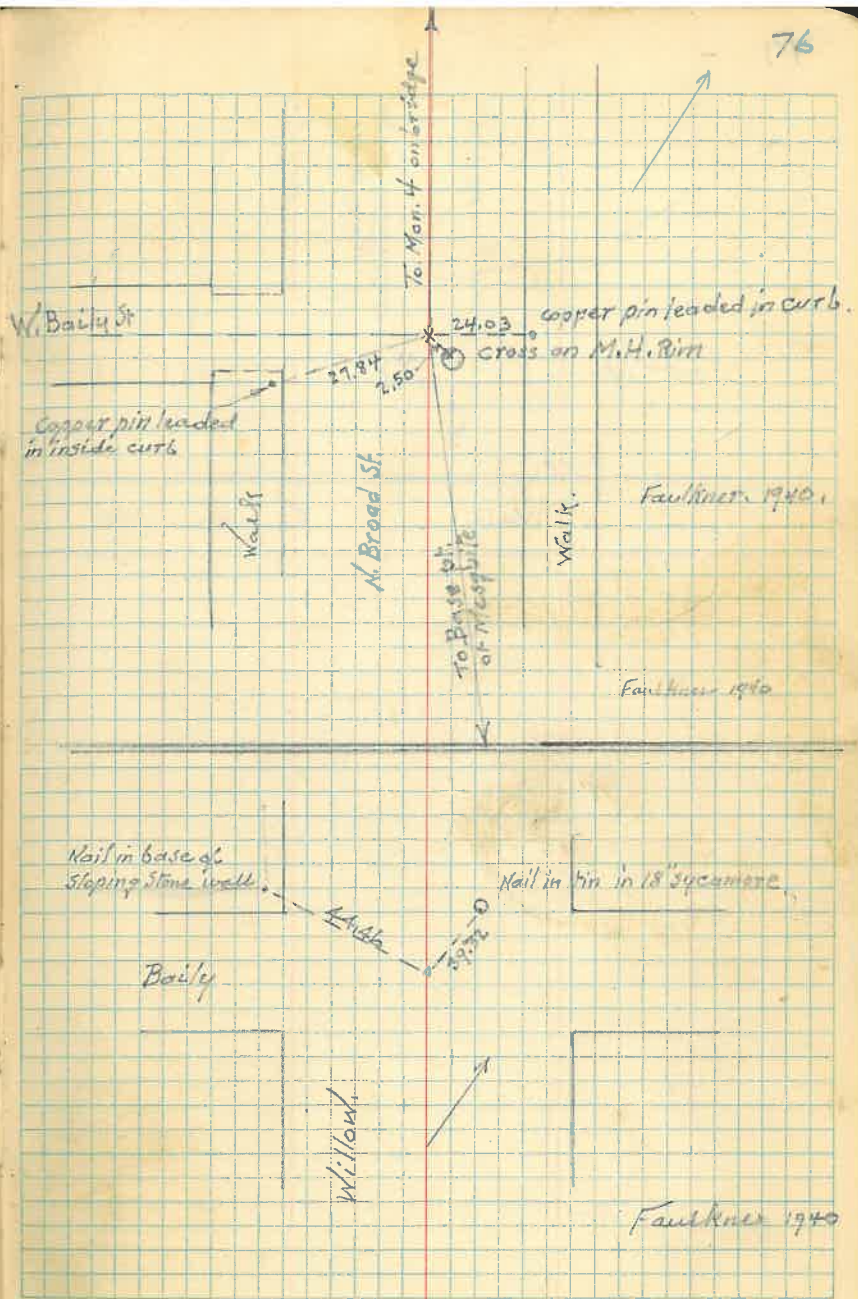
Man. 3 - cut in pao. nt

Center sewer M.H.
cave.





Faulkner 1940





Monroe St.

Rock Wall

East St.

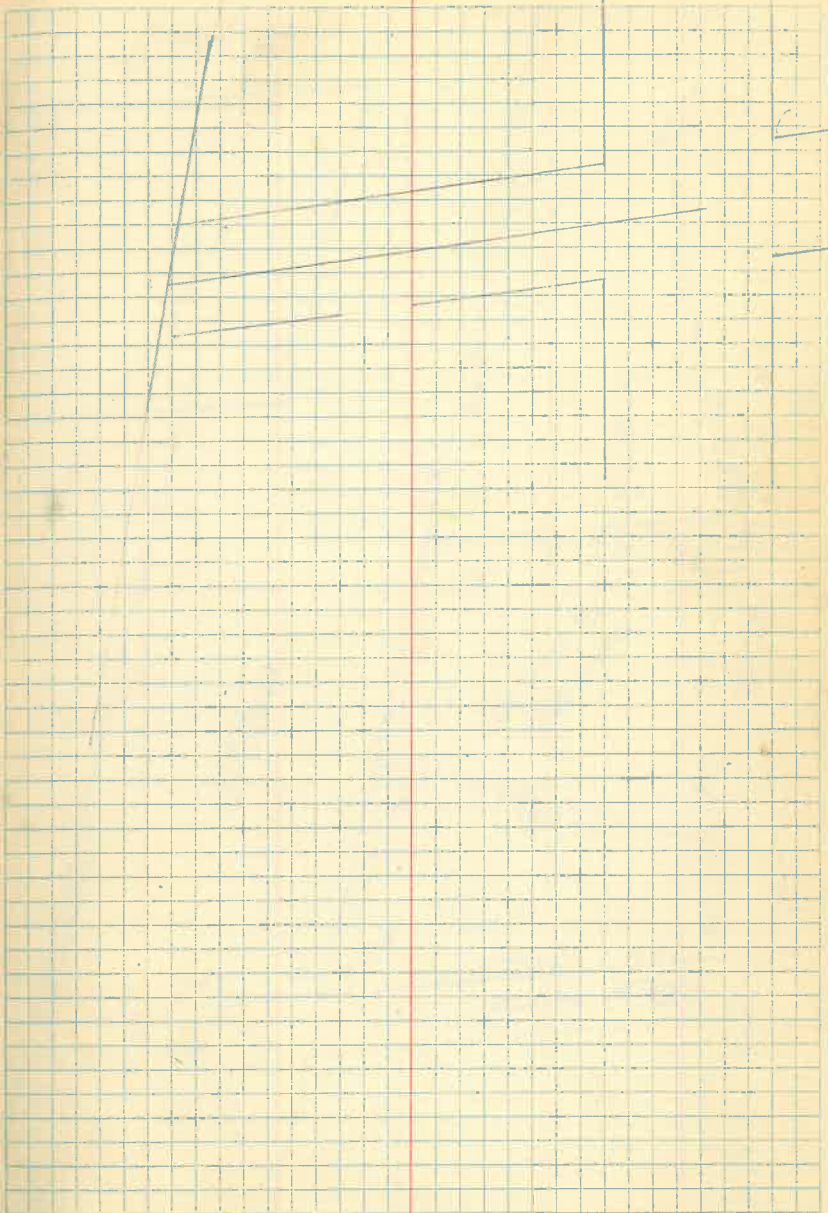
40

15.6

curb

Walk

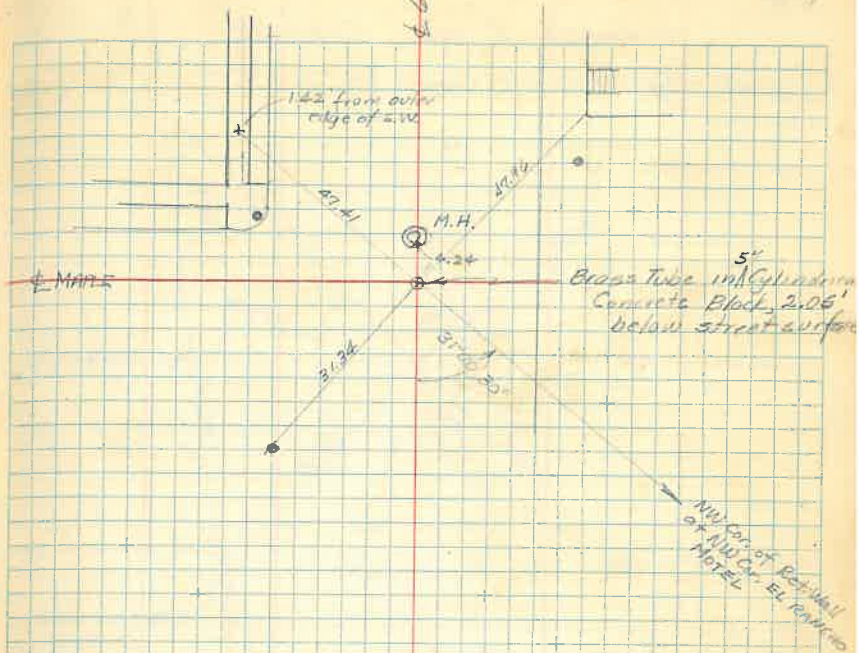
Fault lines 1940



Maple & 6th Street

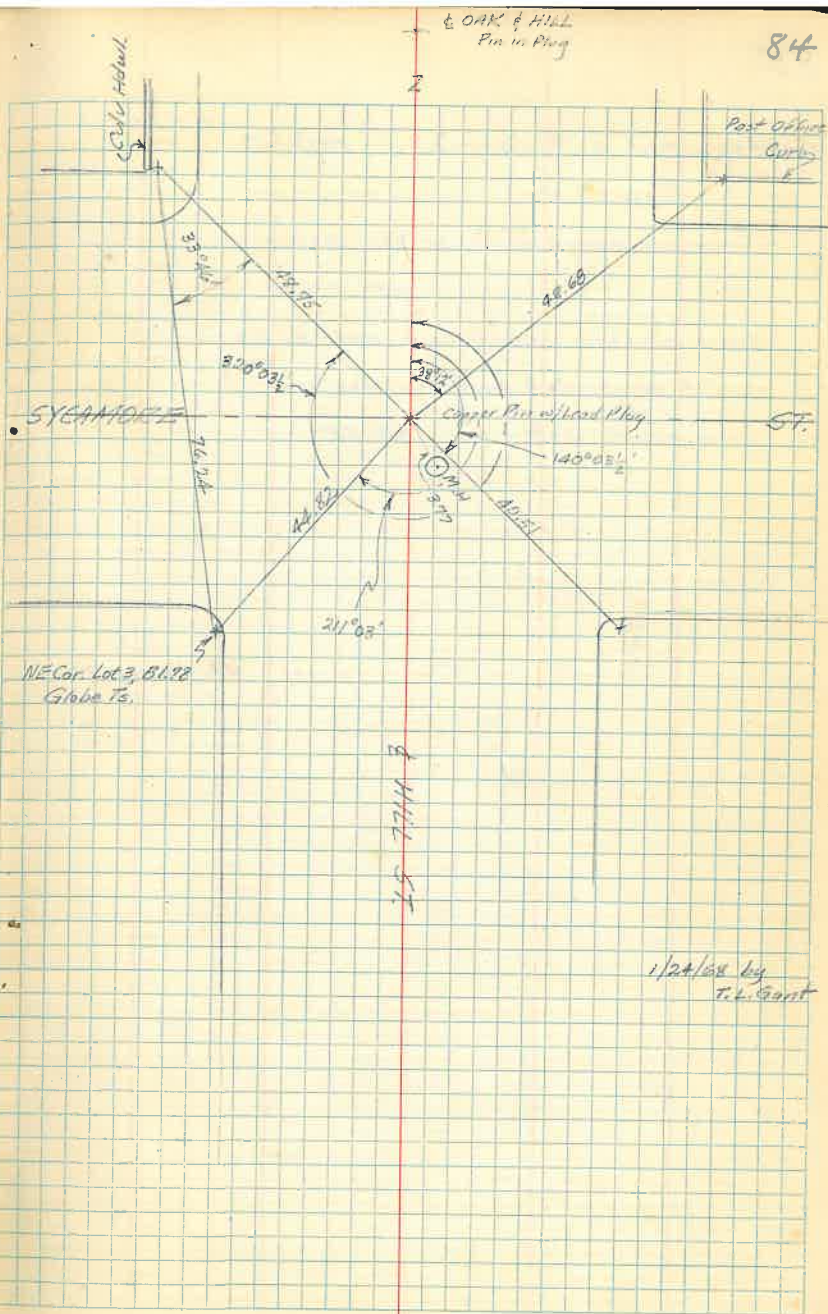
Ref. Brass Tube	Light	} 0° (SE)
	Brass Tube at Monroe & 6 th	

"X" on Conc Walk, N.W.	47.41
PK & lotte cap Nail, west side of Power Bldg SW.	31.34
North 3' adv. ground Corner Conc. Ret. Wall N.E. (near or SE side of M.H. Ring)	47.96
"X" on M.H. Ring on 6 th St.	4.24



SYCAMORE & HILL STREETS

Lead Plug containing Copper Pin.



Cottonwood & Sutherland 10/11/68

(Lopst P11)

Cross on sidewalk curb SE. 31.57

" " " " NE 27.93

Cross on Conc. raised curb NW. 31.22

Mail & Shiner with brass L.S. tag in

base power pole SW. 32.72

Copy from Edwin T. Stewart's
reports to City Council of re-esta-
blishing street center intersection
points in City of Globe.

"East Globe"

From report dated June 7-1929.

- " the bearing of the center line
- " of Ash Street and all north east
- " bearing streets were assumed to
- " be $N. 67^{\circ} 42' E$ as indicated on the
- " official plat of East Globe "

East Globe Townsite

From report dated May 25-1931

- " The bearing of the center line
- " of Oak street and all other
- " north east bearing streets being
- " used as $N. 67^{\circ} 39' E$ "

Street centers by drill stakes - no ties -

- 4th & Push
- 4th & Klimes
- 4th & Apache
- 4th & Tonto
- 4th & Yuma
- 3rd & Yuma

- 2nd & Yuma
- 1st & Yuma
- 1st & Tonto
- 1st & Apache

Globe Townsite

From report dated June 6-1932.

- " The bearing of northwest and south-
- east bearing streets in South East section
- of Townsite is $S. 22^{\circ} 17' 45'' E$ and
- bearing of the north east and southwest
- bearing streets in this section of Town-
- site is $N. 67^{\circ} 42' 15'' E$ - The bearing of
- the northwest and south east bearing
- streets in North East section of the Townsite
- is $N. 22^{\circ} 20' W$ and the bearing of the
- north east and southwest bearing
- streets in this section of Townsite is
- $N. 67^{\circ} 40' E$.

The following are the bearings and
distances between the street centers
as established along the northwest
and south east bearing streets

Ash to Maple $N. 22^{\circ} 17' 45'' W$ 480.25

" Maple to Cottonwood	N. 22° 17' 45" W	517.24
" Cottonwood to Sycamore	N. 22° 17' 45" W	349.56
Sycamore to Oak	N. 22° 17' 45" W	318.80
Oak to Cedar	N. 22° 17' 45" W	327.00
Cedar to Mesquit	N. 22° 17' 45" W	312.40
Mesquit to Push	N. 22° 17' 45" W	252.90
Push to Kline	N. 22° 17' 45" W	360.00
Kline to Apache	N. 22° 25' W	285.20
Apache to Tonto	N. 22° 20' W	285.00
Tonto to Yuma	N. 22° 20' W	285.00
Yuma to Mojave	N. 22° 20' W	285.0
Mojave to Mesa	N. 22° 20' W	285.0
? Mesa to North	N. 22° 20' W	285.0
		4248.10

221	318.8
76	76
301	242.8

MAPLE & PARKER

~ 3/4" SQUARE COPPER BAR IN CONC. ~

S. E. TO CTR. OF "P" IN W.P.A. IN CONC. S.W.	35.99
S. W. " " " " " " " "	31.55
N. N. E. TO "X" ON TOP RAIL ROAD IRON CONC. HEADWALL	31.64
N. E. TO CTR. OF "P" IN W.P.A. IN CONC. S.W.	40.97

KLINE & 1ST ST.

DATE 1-29-76

Fd. 1" SQUARE IRON BAR 11" BELOW TOP PUNT.

S. TO CTR. 6" WATER VALVE	6.95
S. E. TO CTR. 6" WATER VALVE	10.80
S. S. E. TO CTR. 6" WATER VALVE	28.51
W. TO CTR. S. S. M. H.	35.08
S. E. TO TOP CTR. FIRE HYD.	38.21

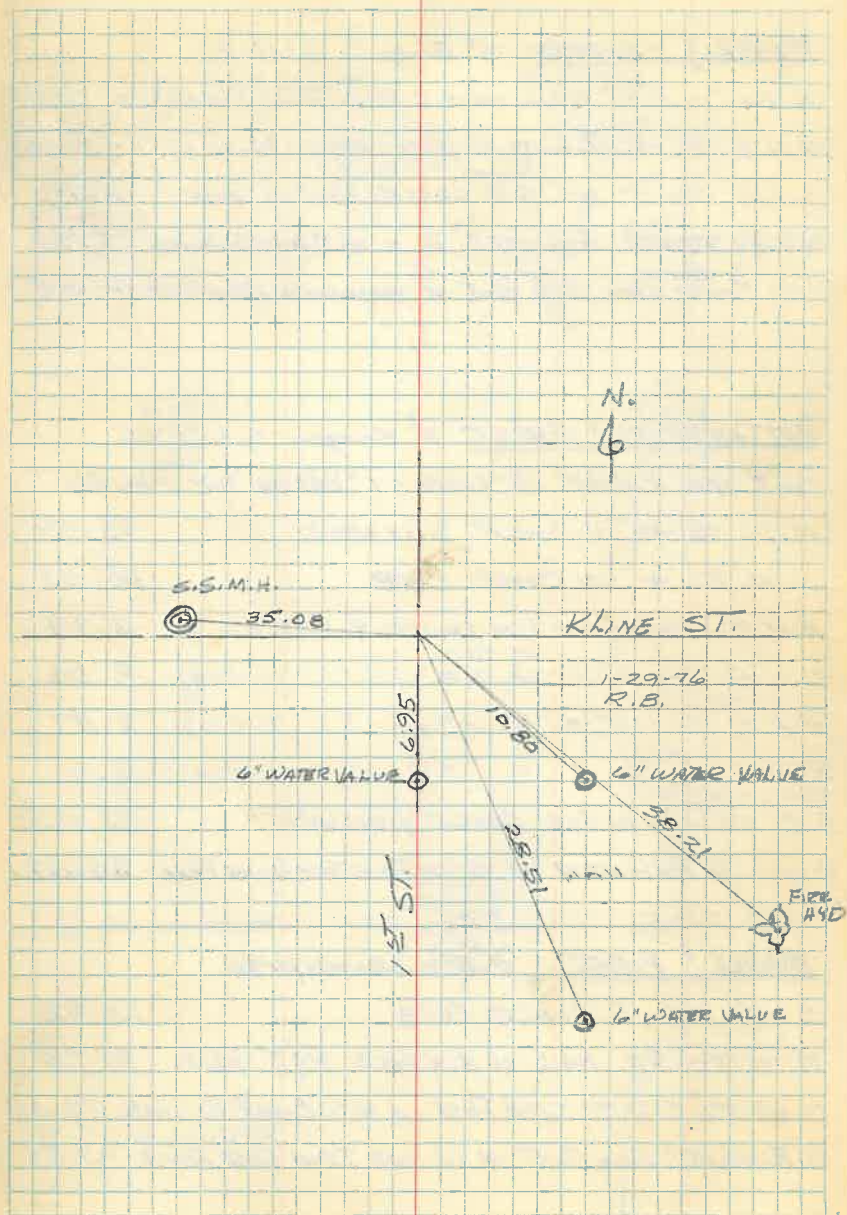
KLINE & HIGH

DATE 1-29-76 (SEE PAGE 108 FOR DUG)

Fd. IRON BOLT 11" BELOW TOP PUNT.

S. TO CTR. S. S. M. H.	2.40
S. E. TO CTR. OF "P" IN W.P.A. IN SIDEWALK	33.50
S. W. " " " " " " " "	35.32
E. S. E. TO CTR. 6" WATER VALVE	14.45
S. E. TO CTR. 6" WATER VALVE	12.81

(SEE PAGE 108 FOR SKETCH)



MAPLE SECOND R. BUNGER 6-11-76

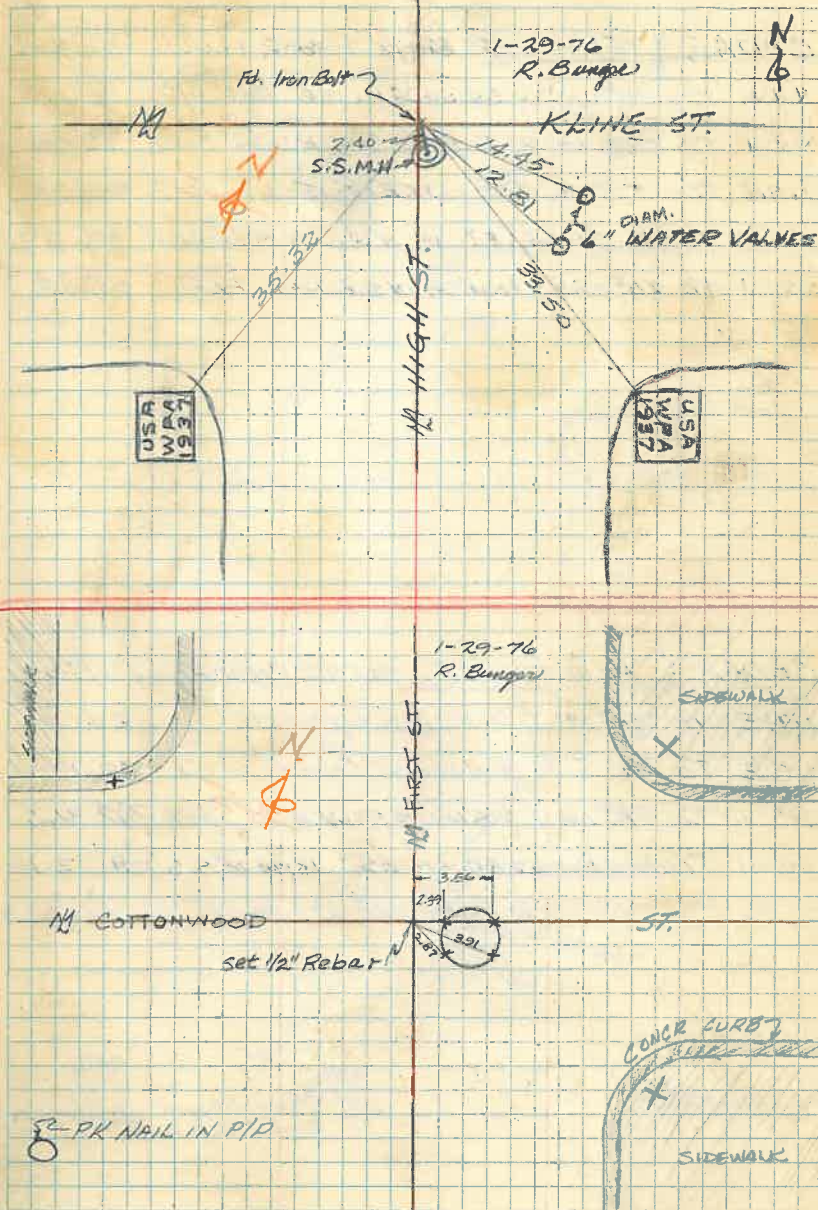
N.E. TO PK. NAIL IN S.E. FACE TELE. POWER POLE 37.87
 N.N.E. TO + ON SOUTH RIM OF SEWER M.H. 5.15
 S.S.E. TO + ON TOP ^{CENTER} CONCR. POST IN FENCE 22.29
 S.S.E. TO CTR. OF LETTER "P" IN W.P.A. ON SIDEWALK 22.96
 N.W. TO ^{CENTER} 2" IRON COR. POST IN ORNAMENTAL IRON FENCE 43.85

COTTONWOOD FIRST R. BUNGER 6-11-76

SET 1/2" REBAR 18" LONG - 1" BELOW TOP PAVING
 N.E. TO + IN CONCR. SIDEWALK. 33.59
 N.W. TO + IN CONCR. CURB 36.51
 N.N.E. TO + ON RIM SEWER M.H. (N. RIM.) 2.39
 N.N.E. TO + " " " " (N. RIM) 3.56
 N.N.E. TO + " " " " (S. RIM) 2.87
 N.N.E. TO + " " " " (S. RIM) 3.91
 S.E. TO + IN COR. CONCR. SIDEWALK 32.02
 S.W. TO PK NAIL IN N.W. FACE TELEPHONE POLE 30.87

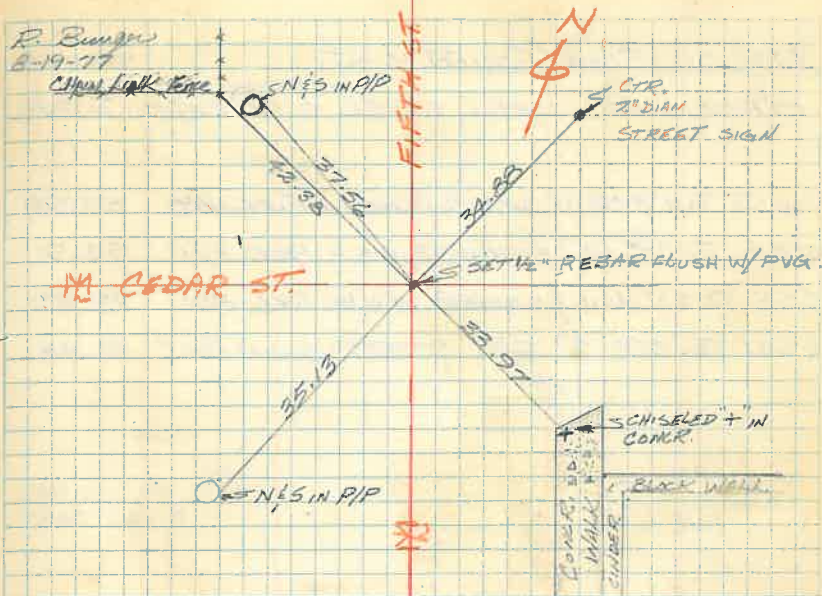
MAPLE FIRST R. BUNGER 6-11-76

S. TO + IN CONCR. CURB 12.92
 N.W. TO PK NAIL IN N.E. FACE P.T. POLE 34.74
 S.W. TO CTR. 3" IRON POST IN N.S. CONCR. RET. WALL 33.05
 N.E. TO 2" IRON POST IN W. END IRON POST FENCE 47.85

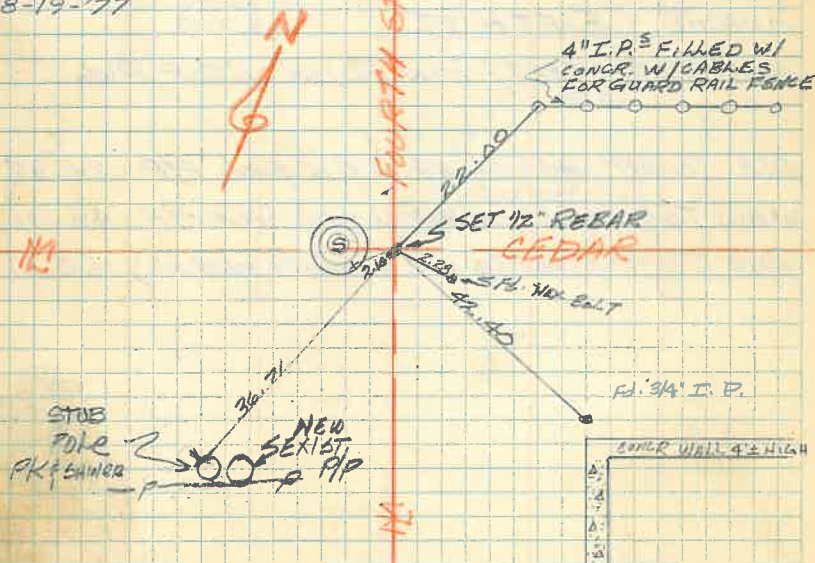


CEDAR & FIFTH ST. SET 1/2" REBAR FLUSH W/PVC.
 NNW TO 20" NAIL & SHINER IN N.E. FACE P/P. 37.56
 NNW TO CTR. OF 2" I.P. @ COR. ^{CHAIN LINK} FENCE. 42.38
 NNE TO CTR. 2" I.P. STREET SIGN POST 34.88
 SSE TO + CHISELED IN N.W. COR. ^{CONCR} SIDEWALK 33.97
 SSW TO 20" NAIL & SHINER IN S.E. FACE P/P. 35.13

CEDAR & FOURTH ST. - SET 1/2" REBAR FLUSH W/PVC
 NNE TO CTR 4" I.P. FILLED W/CONCR. 22.00
 SSE TO 3/4" I.P. @ N.W. COR. ^{4" x 4" WALL} CONCR. WALL 42.40
 SSW TO PK NAIL & SHINER IN N.W. FACE P/P 36.71
 SSW TO + CHISELED IN ESE RIM OF S.S.M.H. 2.10
 SSE TO TOP CTR. HEX HEAD BOLT FLUSH 2.28



R. Bumpus
8-19-77



111
MESQUITE & FOURTH ST.

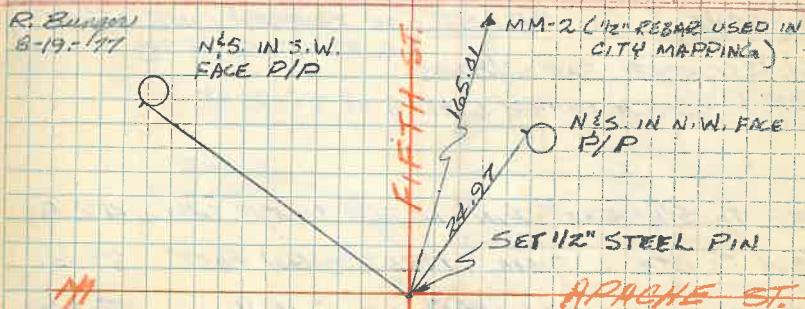
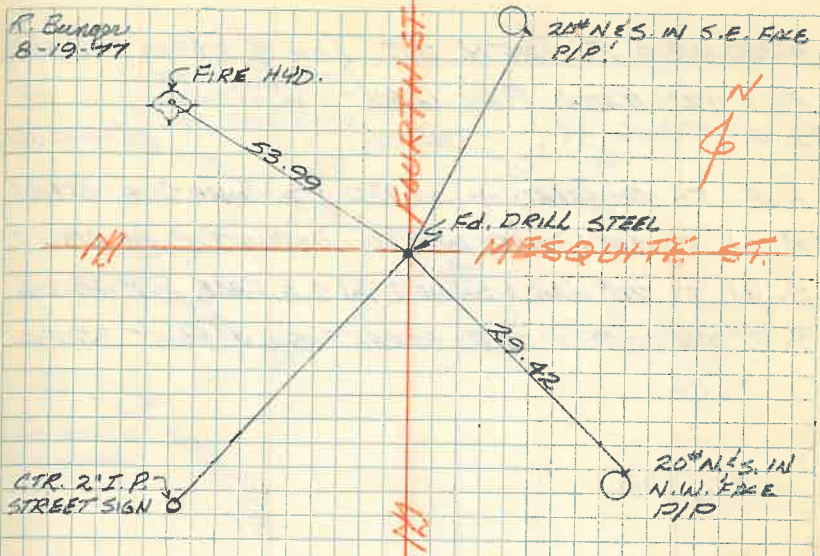
FD. ORIGINAL DRILL STEEL 0.60 BELOW TOP AVG.

N.W. TO TOP CTR OF BRASS PLUG IN FIRE HYD. 53.99
 NNE TO 20" NAIL & SHINER IN S.E. FACE P/P 94.91
 SSE TO 20" NAIL & SHINER IN N.W. FACE P/P 29.42
 SSW TO CTR. 2" I.P. STREET SIGN POST 46.48

APACHE & FIFTH ST.

SET 1/2" STEEL PIN FLUSH W/ TOP AVG

ENE TO 20" NAIL & SHINER IN N.W. FACE P/P 24.97
 WNW TO 20" NAIL & SHINER IN S.W. FACE P/P 45.91
 NNE TO 1/2" REBAR (Δ MM-2 IN CITY MAPPING) 165.01



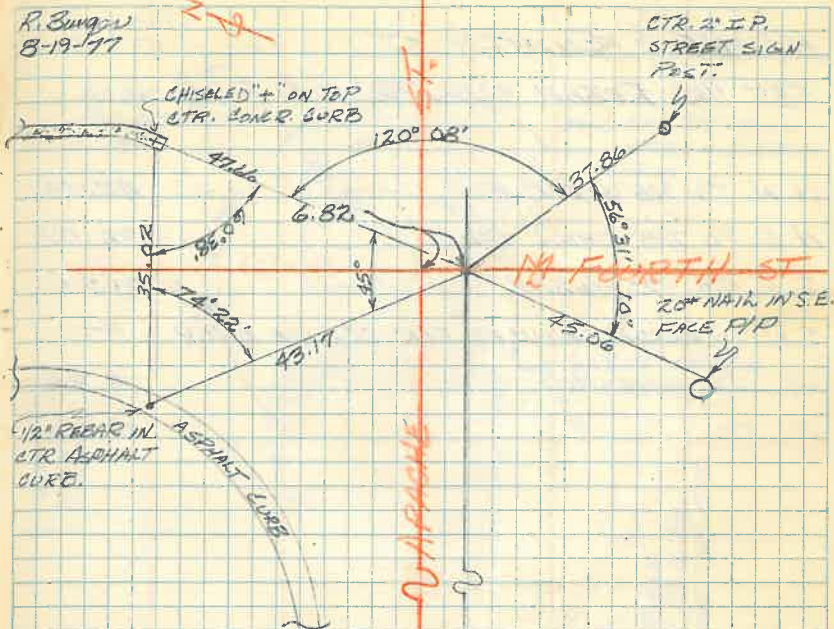
APACHE & FOURTH ST. (ON & OFFSET 6.82)
 TO S. OF N₁
 Fd. 1/2" IRON PIPE 6.82
 S. OF TRUE N₁.

N.E. TO CHISELED "+" ON TOP CTR. CONCR. CURB 47.66
 N.W. TO 1/2" REBAR IN CTR. ASPHALT CURB 43.17
 S.W. TO 20# NAIL & SHINER IN S.E. FACE P/P 45.06
 S.E. TO CTR. 2" I.P. STREET SIGN POST 37.86

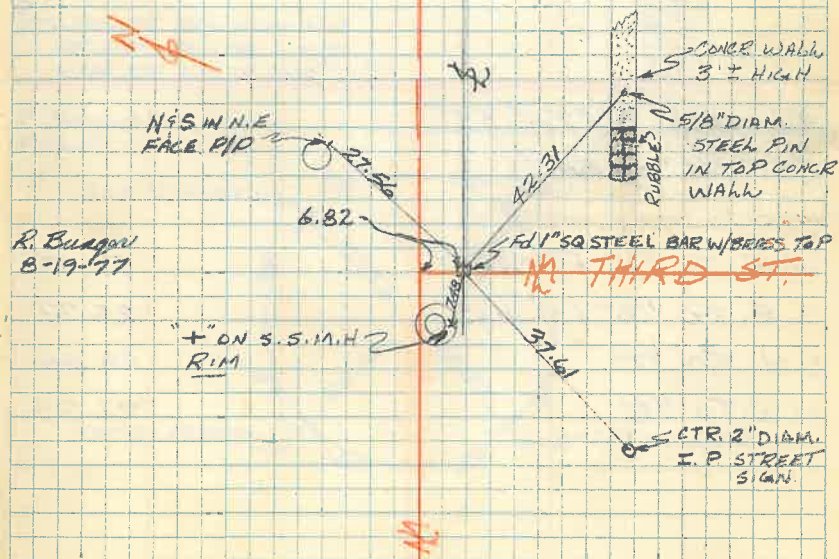
APACHE & THIRD ST. (ON SURVEY LINE OFFSET)
 6.82' TO S. OF N₁
 Fd. 1" SQ. STEEL BAR W/BRASS
 TOP & PUNCH MARK 6.82' S. OF TRUE N₁.

SE TO 5/8" STEEL PIN IN TOP CONCR. WALL 42.31
 SW TO CTR. 2" DIAM. STREET SIGN POST 37.61
 NW TO "+" CHISELED IN S. RIM S.S.M.H. 7.48
 NE TO 20# NAIL & SHINER IN N.E. FACE P/P 27.56

R. Blagden
 8-19-77



R. Blagden
 8-19-77



KLINE & FOURTH ST.

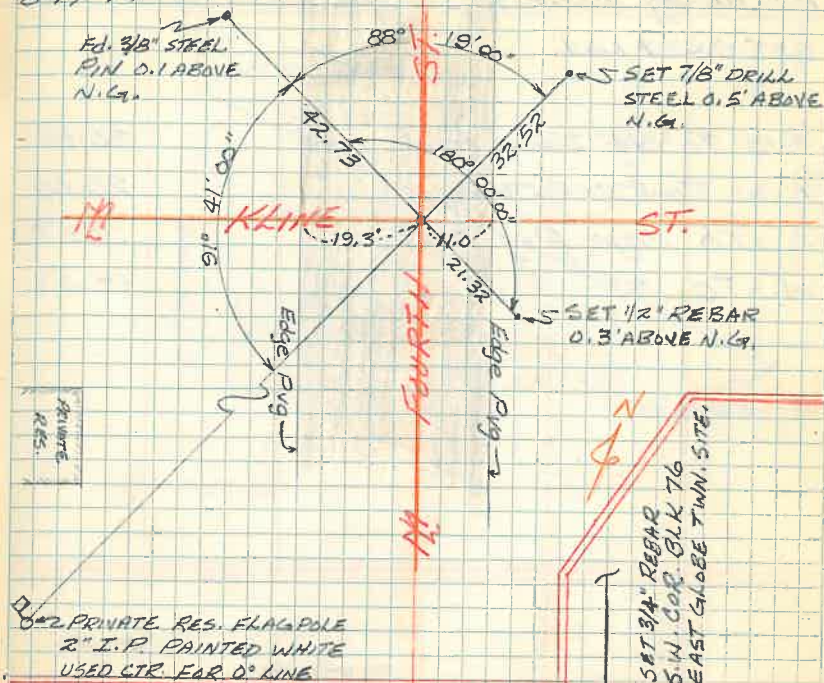
SET 1/2" REBAR FLUSH W/ TOP PUG.

N.W. TO 3/8" STEEL PIN	42.73
N.E. TO 7/8" DRILL STEEL	32.52
S.E. TO 1/2" REBAR	21.32
S.W. TO FLAGPOLE USED FOR 0° LINE ONLY	—
W. TO EDGE PUG	19.3±
E. TO " "	11.0±

KLINE & FIFTH ST.

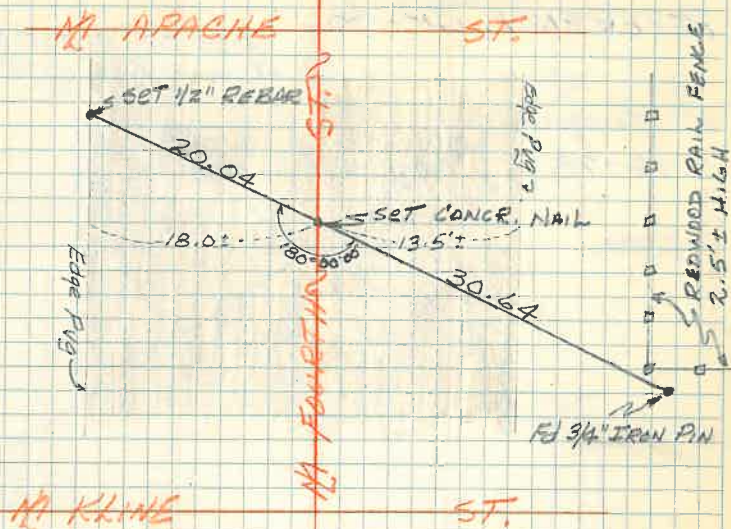
SET 3/4" REBAR

N.E. TO 3/4" REBAR	42.43
S.E. TO 1/2" "	25.77
S.W. TO 1/2" "	28.45
N.W. TO 1/2" "	27.23

R. BUNGER
8-19-77R. BUNGER
8-19-77

PT. ON N¹ FOURTH ST., (BETWEEN KLINE & APACHE)
 SET CONCR. NAIL

S.E. TO 3/4" IRON PIN	30.64
N.W. TO 1/2" REBAR	20.04
E. TO Edge PUG	13.5±
W. TO " "	18.0±



REFERENCE CP-4a

R. Bunker
2-14-78CROSS CUT IN TOP BRASS
PLUG IN FIRE HYDRANTN
↓

65.22

95.19

PK NAIL & SHINER
IN PAVING.

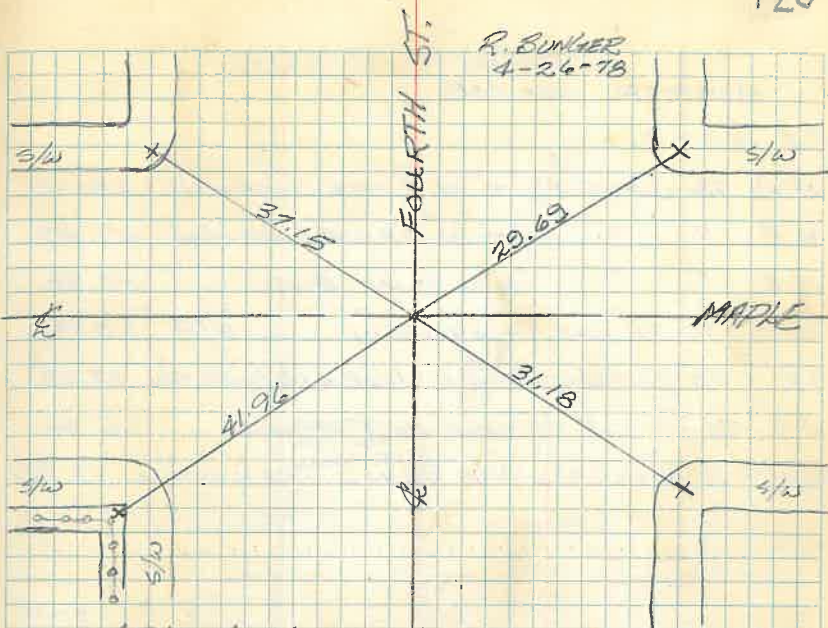
29.97

TOP CTR. OF HEX HEAD
BOLT

2.38

DCP-4a. IS NAIL & SHINER
IN W. EDGE PUG.

PUG OVER 10-83

R. Bunker
4-26-78

MAPLE & FOURTH ST. - FD. ORIGINAL
COPPER RIVET IN TOP CTR. HEX DRILL STEEL.
(RIV. HAS BEEN SET IN CONCR.) TOP OF DRILL STEEL
IS

S.W. TO CHISELED "+" IN TOP
CONCR. RET. WALL. W/ CHAIN LINK FENCE. 41.98

SE. TO CHISELED "+" IN N.W. COR.
CONCR. S/W. 31.18

N.E. TO CHISELED "+" IN S.W.
COR. CONCR. S/W. 29.69

N.W. TO CHISELED "+" IN S.E. COR.
CONCR. S/W. 37.15

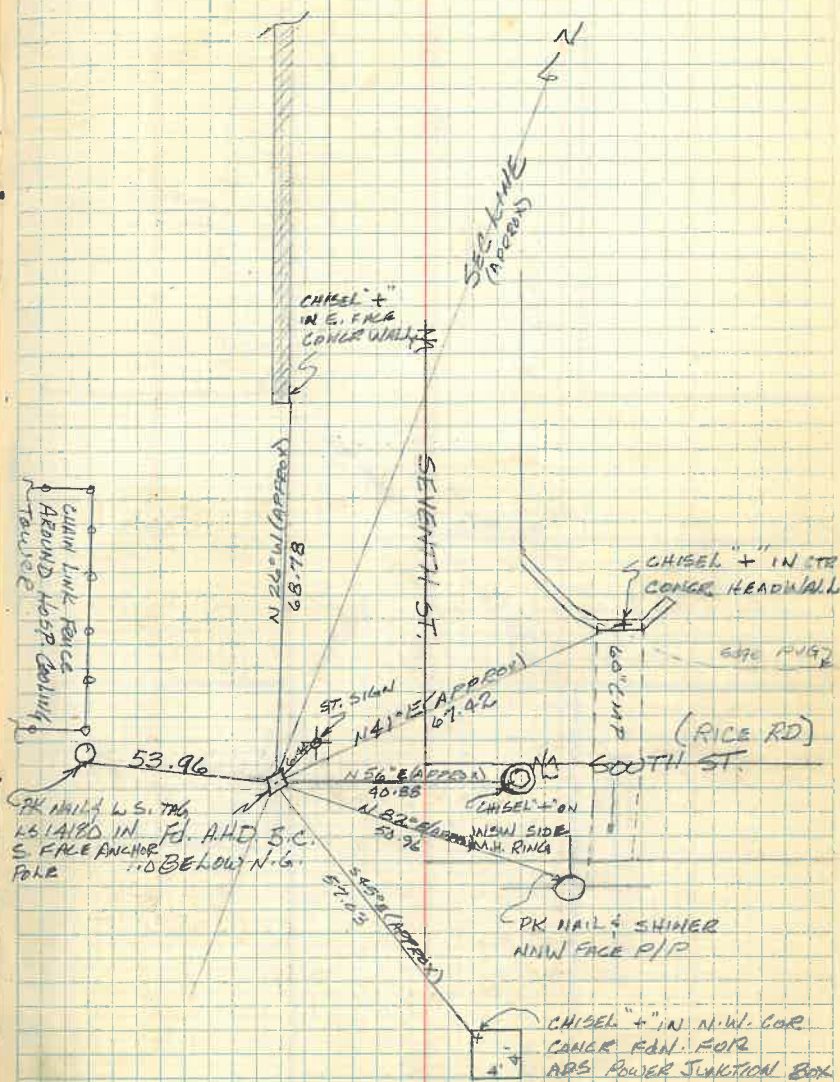
567' 42" W. TO "+" ON W. EDGE M.H. RIM. 4.82

HOSPITAL SEC. COR.

R.B. 3-23-81

N.W. TO CHISELED "+" IN E. FACE CONCR WALL 68.78
 N.E. " " "+" IN TOP CTR CONCR. H.W. 67.42
 N.E. " " "+" ON SSIMH RIM. 40.88
 ENE TO PK NAIL & SHINER IN PIP 50.96
 SE TO CHISELED "+" IN N.W. COR 4x4 CONCR FEN. 57.03
 N.E. TO ^{CTR.} 2 1/2" I.P. ST. SIGN POST IN CONCR. 6.44
 WEST TO PK NAIL & 1/2" 14180 TAG IN S. FACE ANCHOR POLE 53.96

HOSPITAL CORNER.



R.B. 3-23-81

124-C

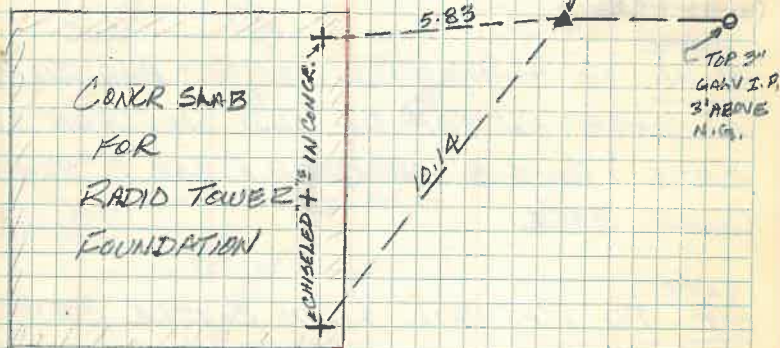
124-D

REFERENCE Δ MM-4 (HORN) 6/24/82
USED IN CITY MAPPING JOB No. 76035

N
4

CITY MAPPING
N. SPZ 2011 E
JOB # 76035
CITY OFFICE

MM-4 HORN



R. Bunker

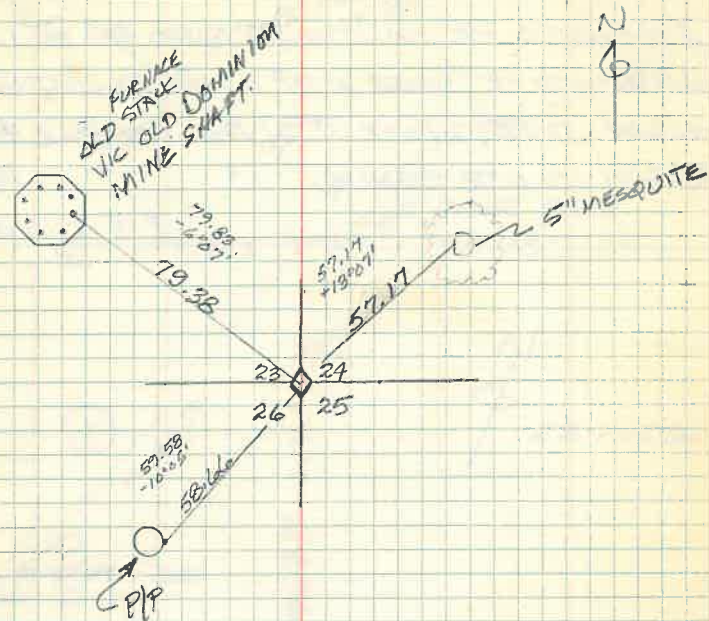
SEC. COR. COMMON TO SEC =
23, 24, 25 & 26 T. 1N., R. 15E

COR. IS SANDSTONE WITH HOLE
DRILLED IN TOP

N. 54° W.
N. W. TO + MARK ON TOP 2" BAR IMBEDDED
IN CONCR. ON TOP OF OLD SMELTER STACK
BASE. BASE 8' ABOVE GR. & BAR 5" ABOVE
CONCR. BASE 79.38

N. 61° E
N. E. TO PK NAIL WITH BOTTLE CAP IN
BLAZE CUT IN 5" MESQUITE TREE 57.17

S. 16° W.
S. W. TO PK NAIL ON E. FACE POWER POLE
5' ABOVE GR. 58.66



127

TONTD & 2ND ST.

1 1/2" REBAR

ENE TO PK NAIL IN TOP GUARD RAIL POST 13.28

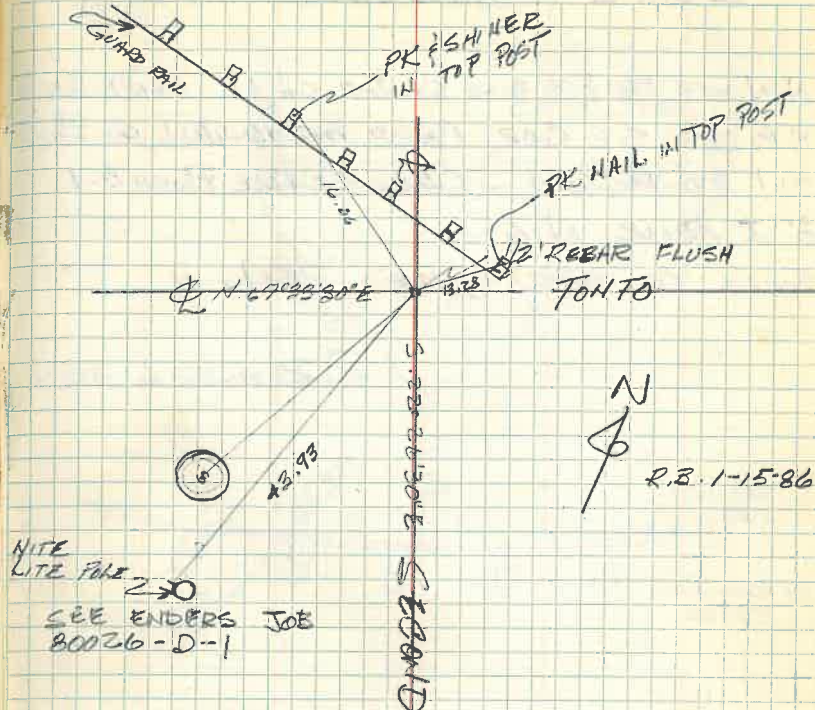
WNW TO PK SHINER IN TOP GUARD RAIL POST 16.06

WSW TO PK SHINER IN SW FACE LITE POLE 43.93

WSW TO CTR SSMH 16.05

R.B. 1-15-86

128



△ STA G-11 (Globe City Mapping) PK NAIL SHINER

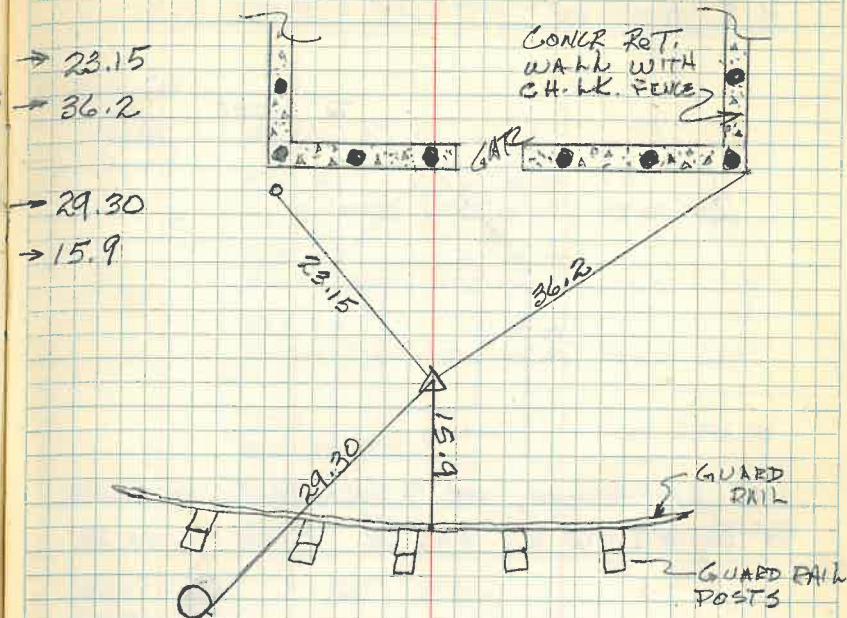
NW TO 3/4" PIPE NEAR SW COR. CH. LK. FENCE BASE → 23.15

NE TO SE COR. CONCR. FOOTING WALK FOR FENCE CH. LK. → 36.2

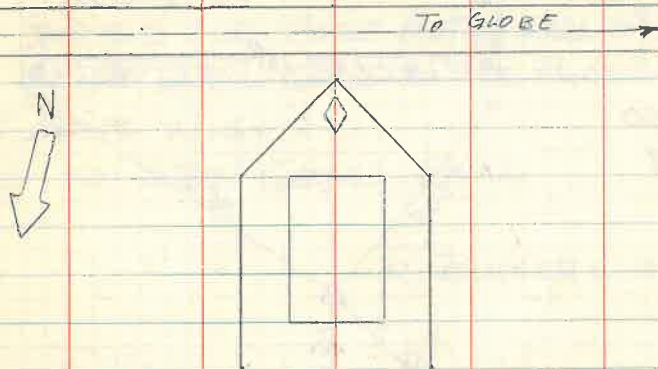
SW TO PK NAIL IN SHINER - SE FACE PBOARD 5'± ABOVE N.G.

SOOTH TO STEEL GUARD RAIL

R. BUNGER 6-10-86



U.S. HWY 60 - DRIVE-IN THEATER B.M.



CUT DIAMOND IN CONC. @ NOSE OF TICKET ISLAND
OF DRIVE IN @ U.S. HWY 60. ELEV. = 3770.39

REFERENCE POINTS

ADDT CAP ELEV @ BRIDGE OF 3630.28

"B-6" POINT ON HILL BY HOUSE ELEV. = 3949.38

REFERENCE SEC. COR. $\frac{16}{21}$ $\frac{15}{22}$ (HOOPES)

SEC. COR.

16/15	C-166	0° (S)	
21/22	REF. #1	62° 05' 09"	(+0.1")
	"X" IN CANON.	242° 05' 09"	108.42 LEVEL
	REF. #2	62° 05' 09"	
	BRIDGE SPIKE	242° 05' 09"	209.42 LEVEL
	REF. #3	62° 05' 09"	
	BRIDGE SPIKE	242° 05' 09"	294.31 LEVEL

STA
B.M. OR W.C. + H.I. - ELEV. 3296.75

BRIDGE SPIKE 4.83 3301.58
IN TELE. POLE 4.22 3297.36

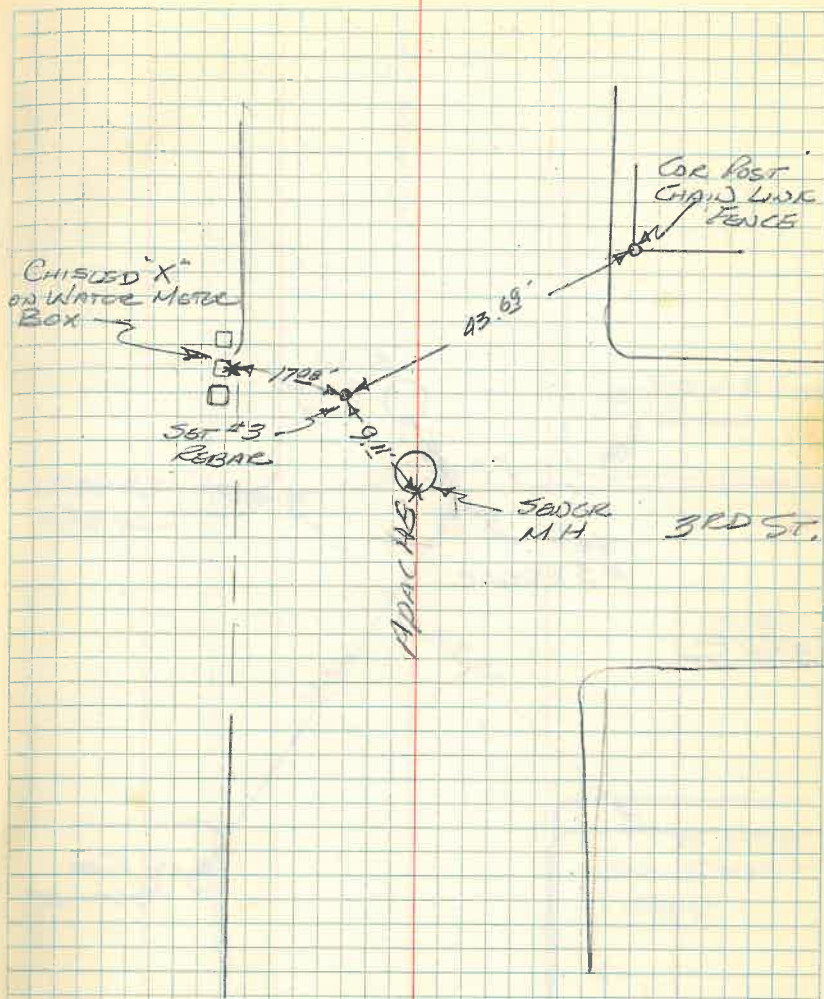
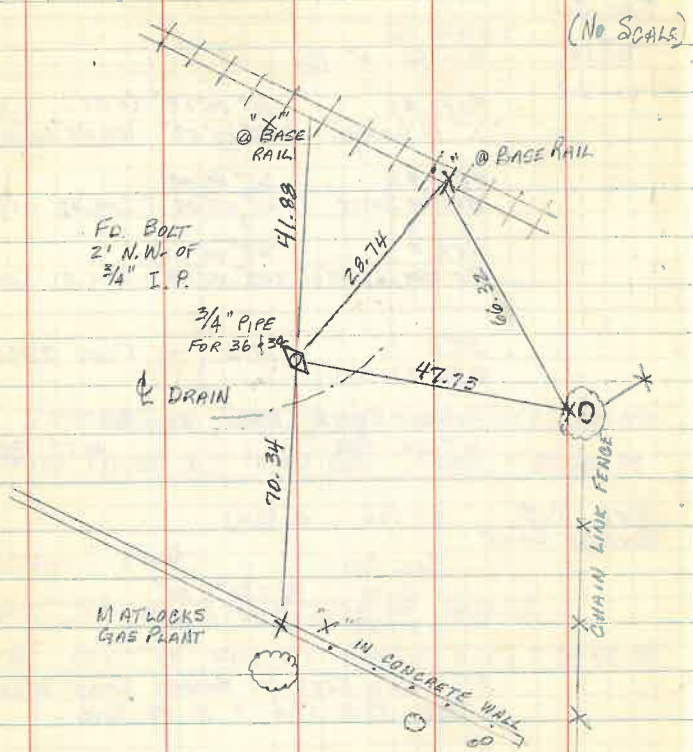
REF. #3	C-166	0° (SW)	
BRIDGE SPIKE	SEC. COR.		(+0.1")
	16/15	2) 234° 11' 35"	
	21/22	1) 54° 11' 37"	(-0.2")

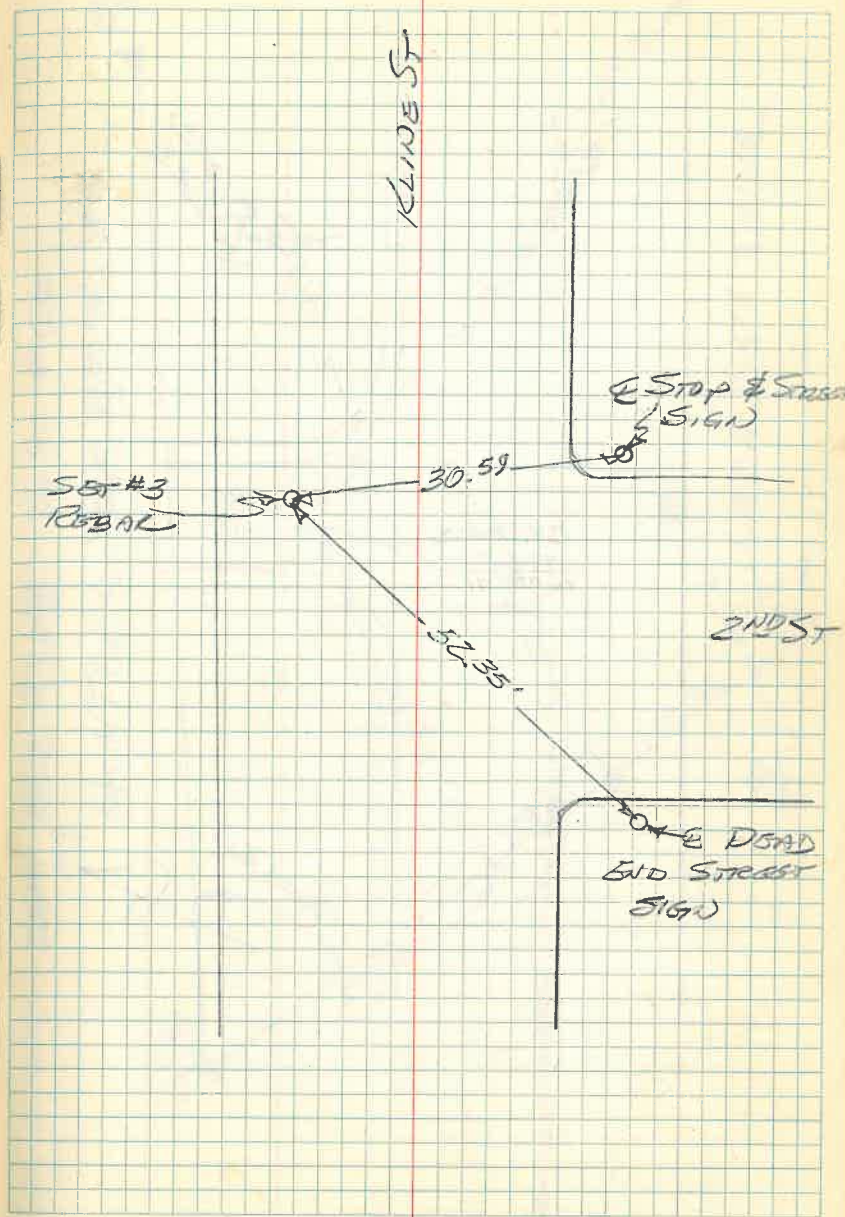
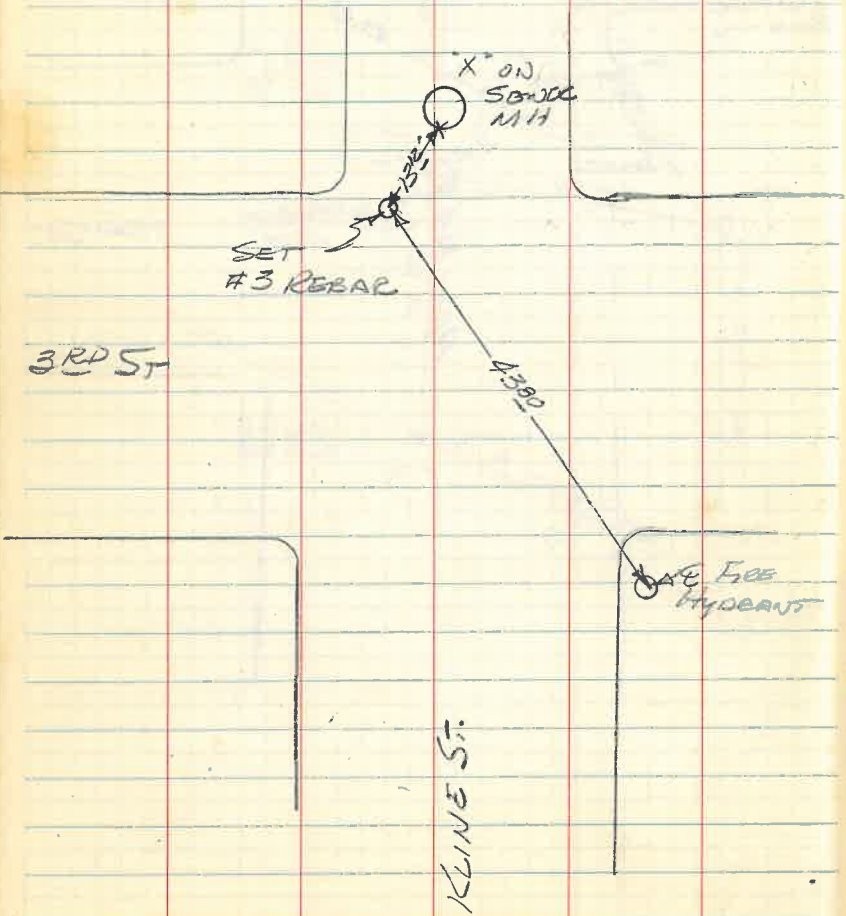
*SET NEW ELEV ON BRIDGE SPIKE W/SHINER IN
TELE. POLE 17.6' ± E. OF B.M.

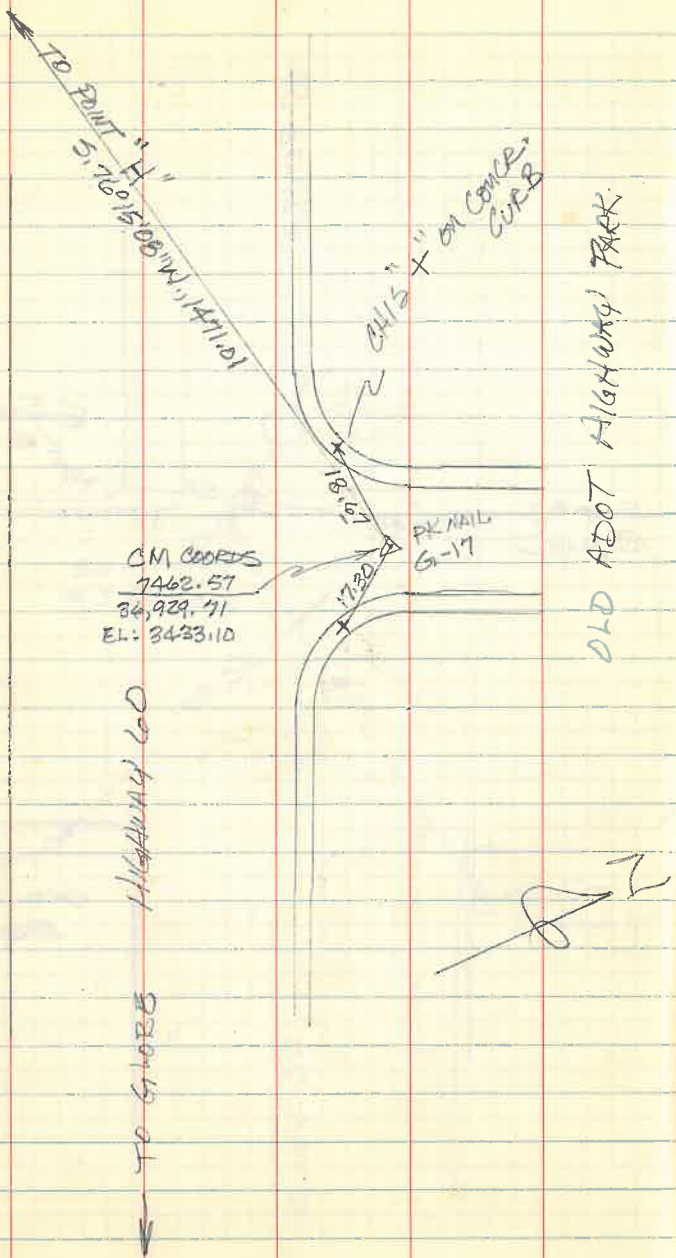
OCCURRY C-166 - B.S. ΔB2 0° (NNE)

H2 #18° 15' 58" (RT) 1735.27 (HORIZ)

1/4 COR. @ MATLOCKS GAS PLANT

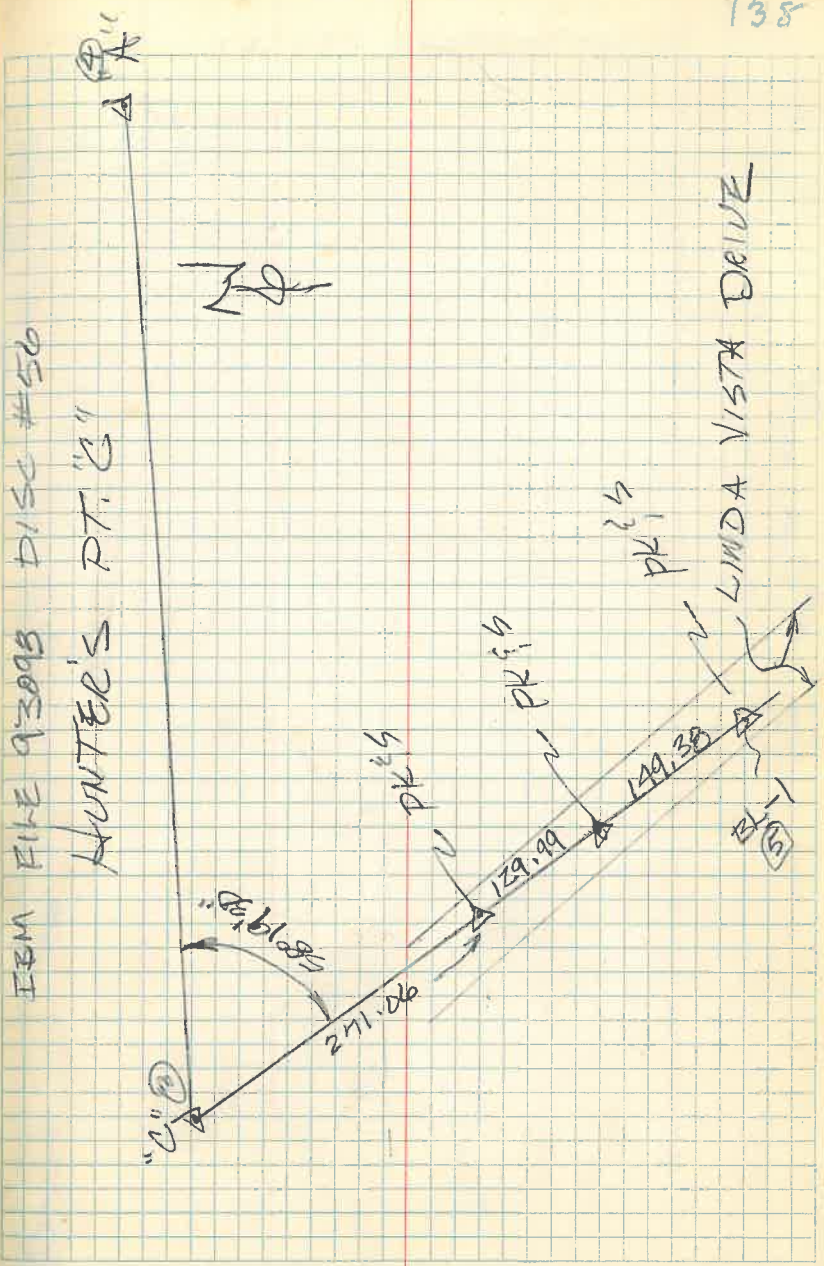






CM COORDS
 7462.57
 34,929.71
 EL: 3423.10

OLD ADOT HIGHWAY PARK



IEM FILE 93098 DISC #56
 HUNTER'S PT. "C"

LINDA VISTA DRIVE

BLT (S)

91 = Disc 13, 38
AZ
DAN 536-4259

Miami
CAP
8192.05
13775.71
1st F
A09: 425-4481

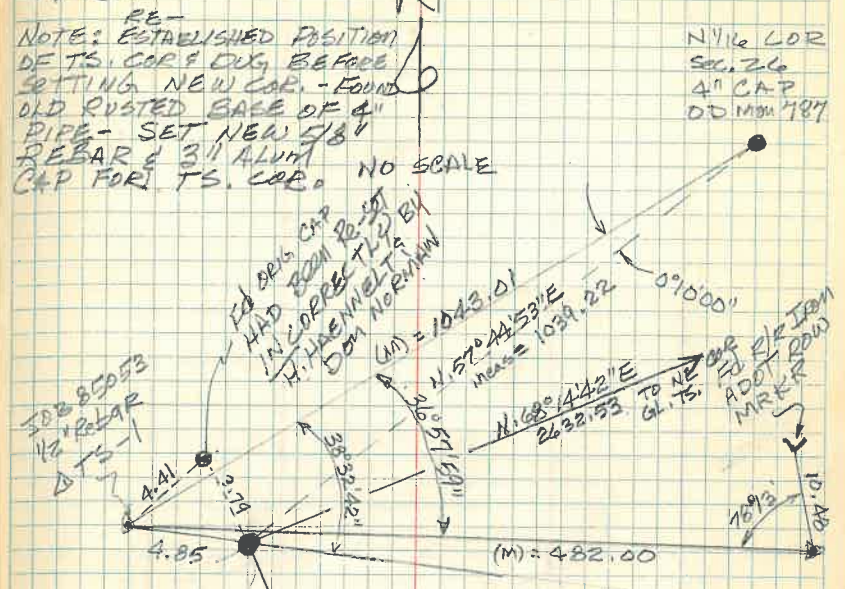
Globe
CAP
3032.11
45478.25
505 73009
73019 (All 50)

BASIS OF I.C.E. COORD SYSTEM
(GLOBE CITY MAPPING)

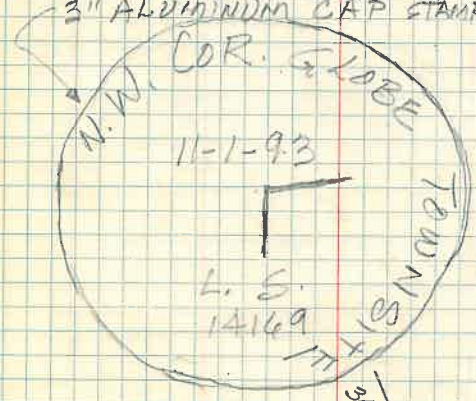
S. 80° 45' 24" E (20")
32,119.71

11-2-93 NW COR GLOBE TOWNSHIP
C.P.B.

N 1/4 COR
SEC. 26
4" CAP
DD MON 787



RESET NW COR GLOBE TS.
3" ALUMINUM CAP STAMPED;



SET NAIL
E. SIDE
BROAD ST

5.21° 28' 26" E
3662.66 TO DOLL
2662.19 TO P.L. LINE
2662.19 TO P.L. LINE
1/2" ON STONE
14" ON STONE
4058.671 TO STONE
WITH LEAD PILE
@ P.L. CITY LIMITS
D.T.S. LINE

C.R. Bain Hill Is

0.07 N^w ~~0.22 W^w of the pt.~~285.42

350'

19977

19977

199794

199794

256878

256878

284,163534

Natural Trigonometrical Functions

Angle	Sin.	Tan.	Sec.	Cosec.	Cotg.	Cosin.	Angle	Sin.	Tan.	Sec.	Cosec.	Cotg.	Cosin.
32	5209	6249	1.1792	1.857	1.600	84805	58	6293	8098	1.2868	1.589	1.235	77715
10	5324	6289	1.1813	1.878	1.590	84650	50	6318	8146	1.2898	1.583	1.228	77531
20	5348	6330	1.1835	1.870	1.580	84495	40	6338	8195	1.2929	1.578	1.220	77347
30	5373	6371	1.1857	1.861	1.570	84339	30	6361	8243	1.2959	1.572	1.213	77162
40	5398	6412	1.1879	1.853	1.560	84182	20	6385	8292	1.2991	1.567	1.206	76977
50	5422	6453	1.1901	1.844	1.550	84025	10	6408	8342	1.3022	1.561	1.199	76791
33	5446	6494	1.1924	1.836	1.540	83867	57	6428	8391	1.3054	1.556	1.192	76604
19	5471	6536	1.1946	1.828	1.530	83708	50	6450	8441	1.3086	1.550	1.185	76417
20	5495	6577	1.1969	1.820	1.520	83549	40	6472	8490	1.3118	1.545	1.178	76229
30	5519	6619	1.1992	1.812	1.511	83389	30	6494	8541	1.3151	1.540	1.171	76041
40	5544	6661	1.2015	1.804	1.501	83228	20	6517	8591	1.3184	1.535	1.164	75851
50	5568	6703	1.2039	1.796	1.492	83066	10	6539	8642	1.3217	1.529	1.157	75661
34	5592	6745	1.2062	1.788	1.482	82904	56	6561	8693	1.3251	1.524	1.150	75471
10	5616	6787	1.2086	1.781	1.473	82741	50	6583	8744	1.3284	1.519	1.144	75280
20	5640	6830	1.2110	1.773	1.464	82577	40	6604	8796	1.3318	1.514	1.137	75088
30	5664	6873	1.2134	1.766	1.455	82413	30	6626	8847	1.3352	1.509	1.130	74896
40	5688	6916	1.2158	1.758	1.446	82248	20	6648	8899	1.3386	1.504	1.124	74703
50	5712	6959	1.2183	1.751	1.437	82082	10	6670	8952	1.3421	1.499	1.117	74509
35	5736	7002	1.2208	1.743	1.428	81915	55	6691	9005	1.3456	1.494	1.111	74314
10	5760	7046	1.2233	1.736	1.419	81748	50	6713	9057	1.3492	1.490	1.104	74120
20	5783	7090	1.2258	1.729	1.411	81580	40	6734	9110	1.3527	1.485	1.098	73924
30	5807	7133	1.2283	1.722	1.402	81412	30	6756	9163	1.3563	1.480	1.091	73728
40	5831	7177	1.2309	1.715	1.393	81242	20	6777	9217	1.3600	1.476	1.085	73531
50	5854	7221	1.2335	1.708	1.385	81072	10	6799	9271	1.3636	1.471	1.079	73333
36	5878	7265	1.2361	1.701	1.376	80902	54	6820	9325	1.3673	1.466	1.072	73135
10	5901	7310	1.2387	1.695	1.368	80730	50	6841	9380	1.3711	1.462	1.066	72937
20	5925	7355	1.2413	1.688	1.360	80558	40	6862	9435	1.3748	1.457	1.060	72737
30	5948	7400	1.2440	1.681	1.351	80386	30	6884	9490	1.3786	1.453	1.054	72537
40	5972	7445	1.2466	1.675	1.343	80212	20	6905	9545	1.3824	1.448	1.048	72337
50	5995	7490	1.2494	1.668	1.335	80038	10	6926	9601	1.3863	1.444	1.042	72136
37	6018	7536	1.2521	1.662	1.327	79864	53	6947	9657	1.3902	1.440	1.036	71934
10	6041	7581	1.2549	1.655	1.319	79688	50	6967	9713	1.3941	1.435	1.030	71732
20	6065	7627	1.2577	1.649	1.311	79512	40	6988	9770	1.3980	1.431	1.024	71529
30	6088	7673	1.2605	1.643	1.303	79335	30	7009	9827	1.4020	1.427	1.018	71325
40	6111	7720	1.2633	1.636	1.295	79158	20	7030	9884	1.4061	1.422	1.012	71121
50	6134	7766	1.2661	1.630	1.288	78980	10	7050	9942	1.4101	1.418	1.006	70916
38	6157	7813	1.2690	1.624	1.280	78801	52	7071	10000	1.4141	1.414	1.000	70711
10	6180	7860	1.2719	1.618	1.272	78622	50						
20	6202	7907	1.2748	1.612	1.265	78442	40						
30	6225	7954	1.2778	1.606	1.257	78261	30						
40	6248	8002	1.2808	1.601	1.250	78079	20						
50	6271	8050	1.2838	1.595	1.242	77897	10						

Cosin. Cotg. Cosec. Sec. Tan. Sin. Angle

Cosin. Cotg. Cosec. Sec. Tan. Sin. Angle

ϕ of *Yuma* = 2. $\frac{99.37}{50.55}$
 86.65 pt
 98.84
 185.49
 69.51
 255.00
 30.45
 285.45 *Ac. E.*
 285.05
 $\sqrt{70.50}$ *pipe at*
Butland
 285.123
 70.37
 30.45 *Dist.*
 286.70
 39.45
 143.35
 1186.8
 25803
 25803