

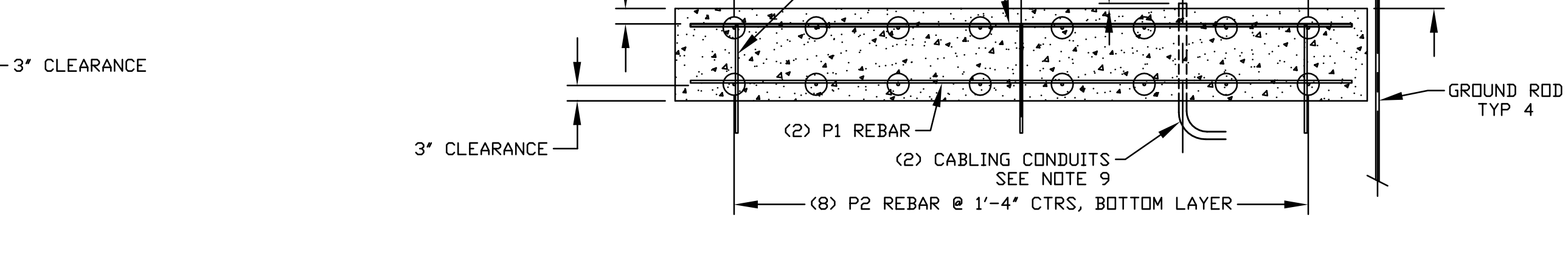
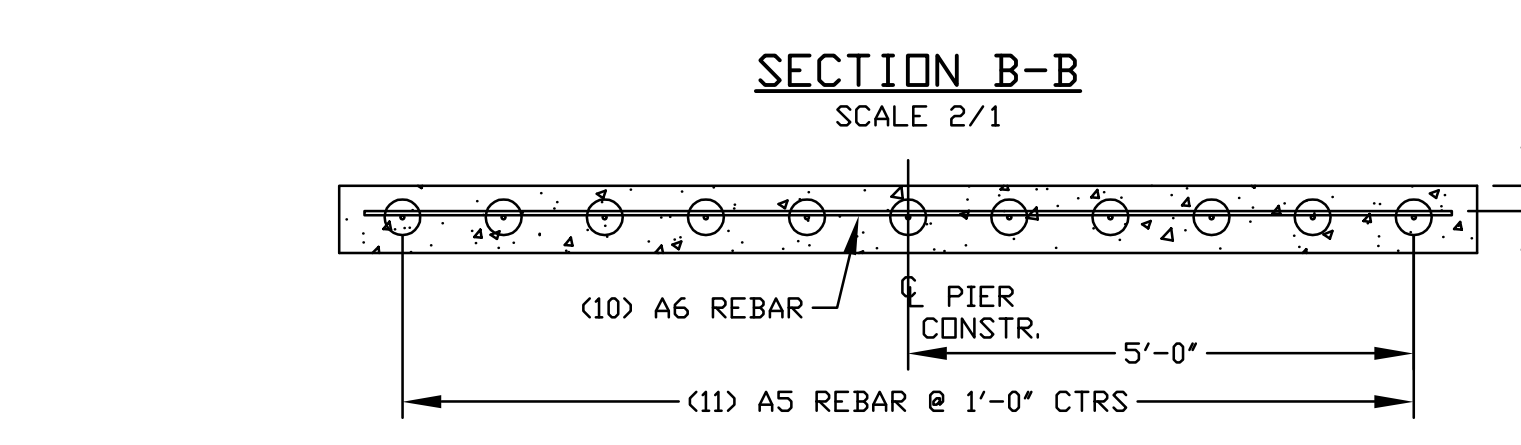
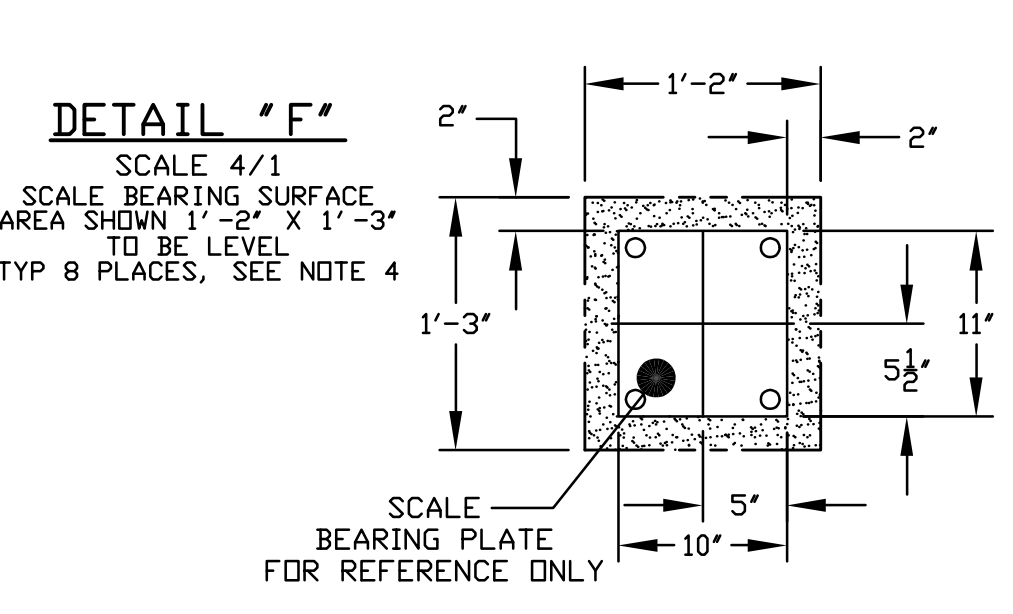
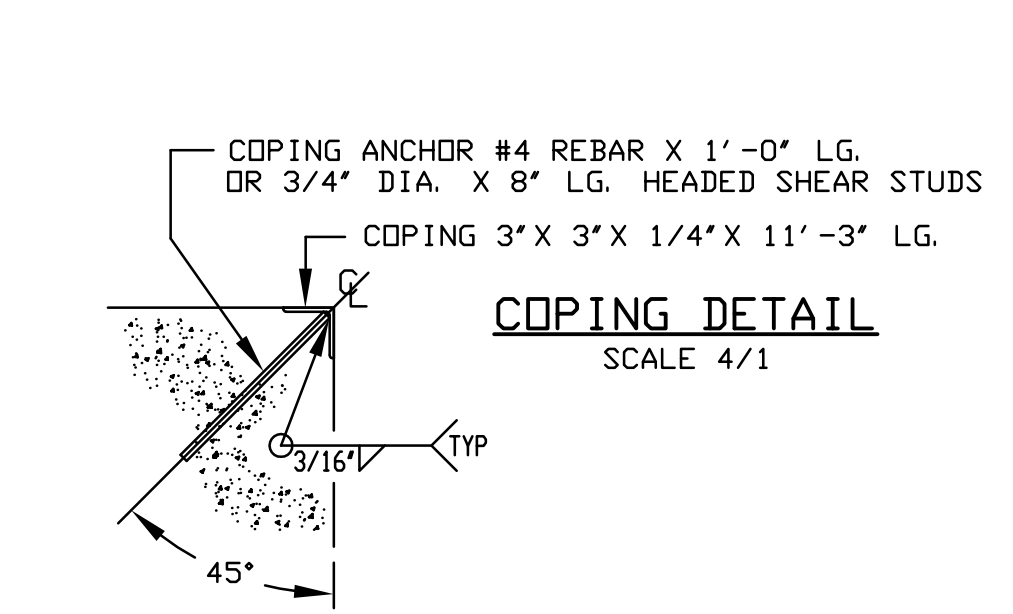
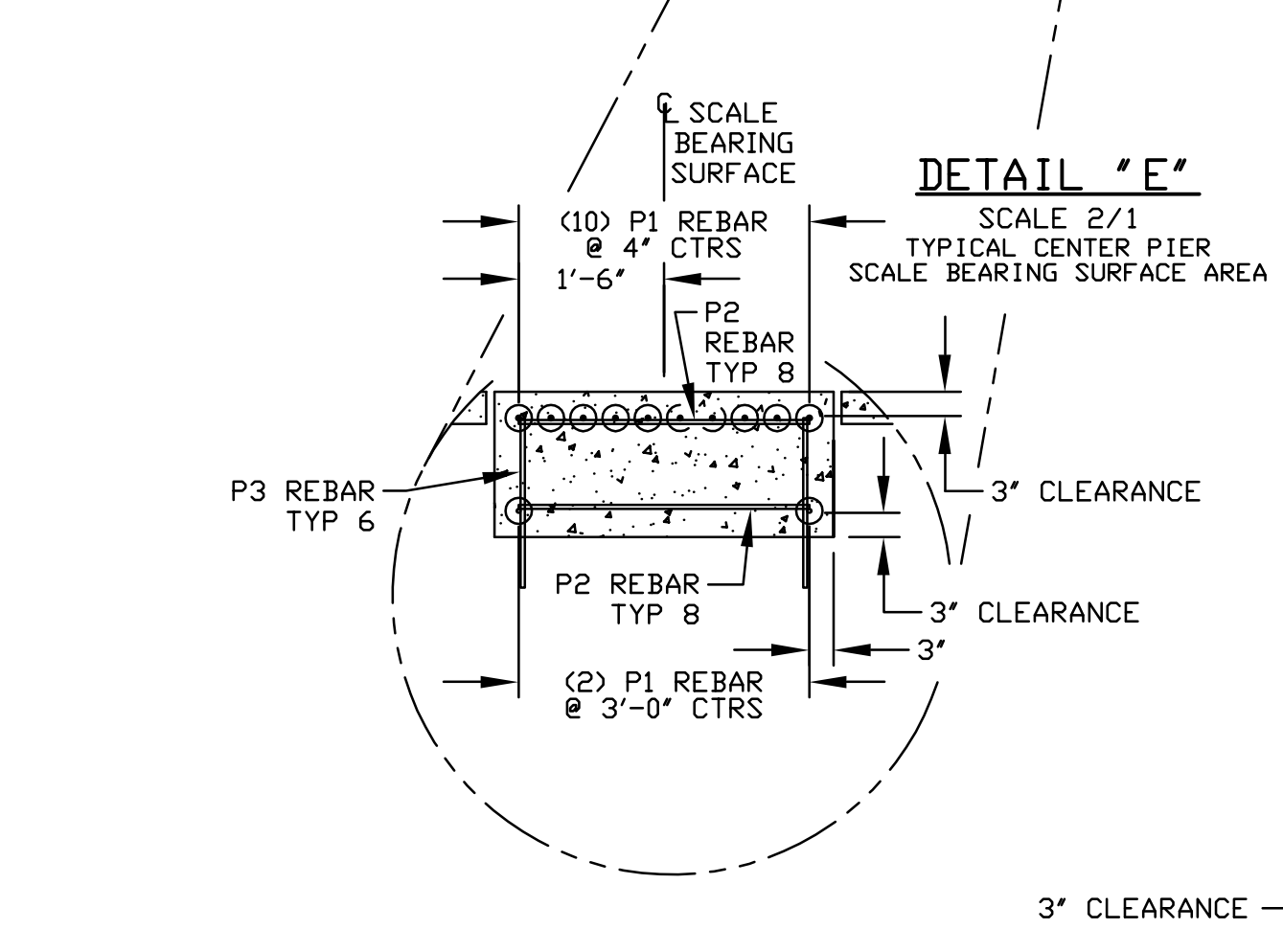
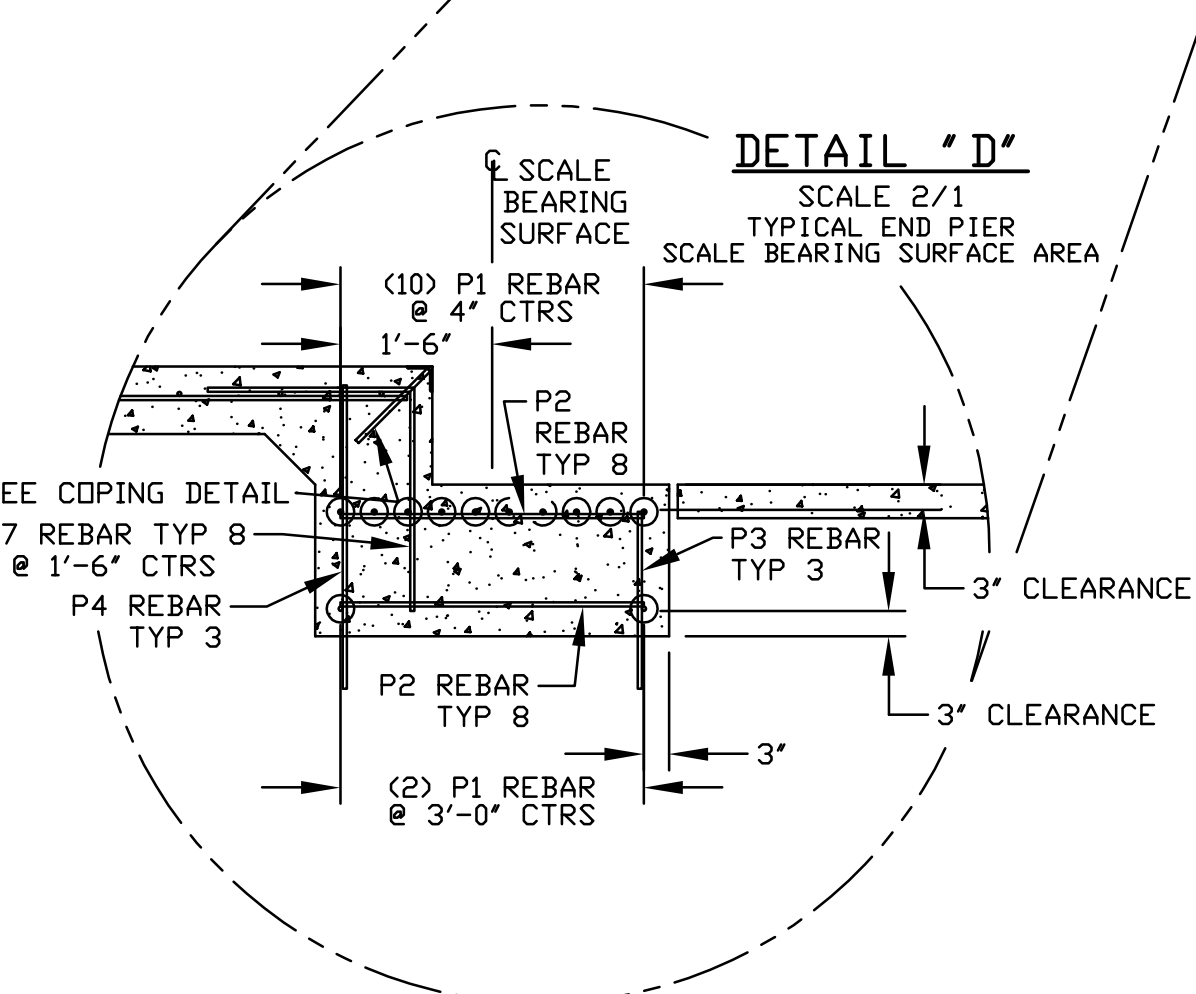
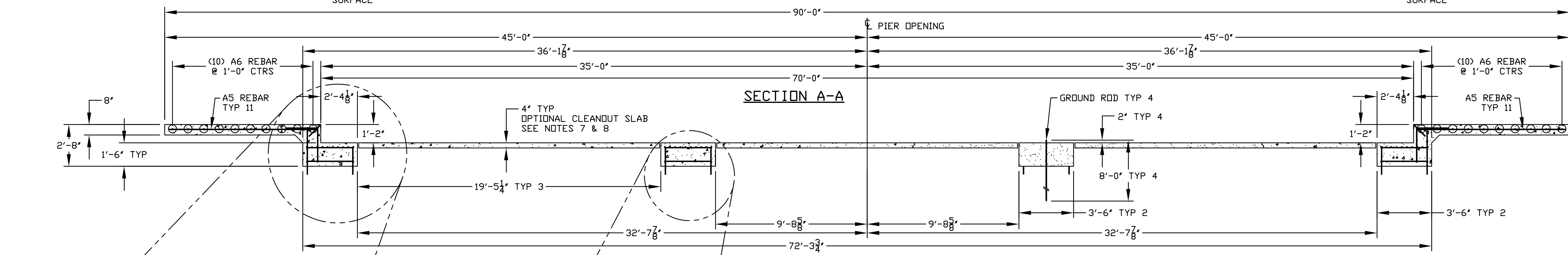
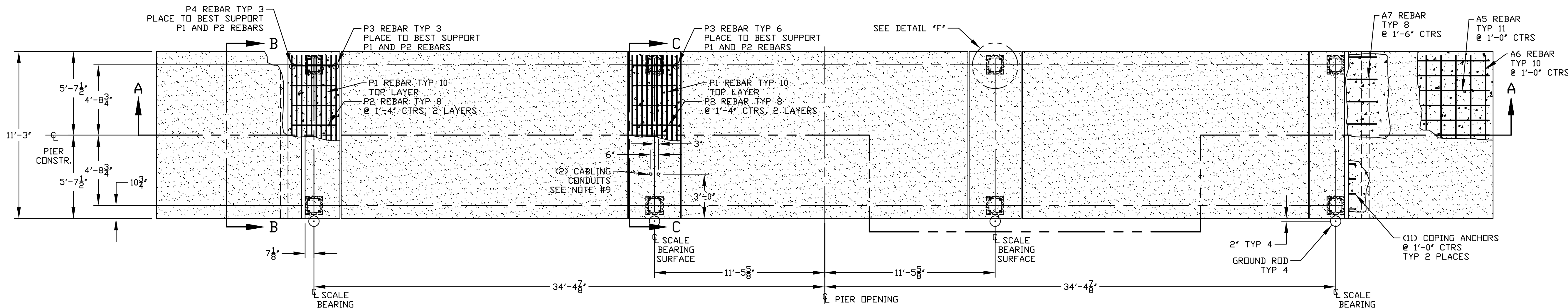
- NOTES:
1. MINIMUM SOIL BEARING CAPACITY OF 3,000 POUNDS PER SQUARE FOOT. DUE TO VARYING SOIL CONDITIONS, WEIGH-TRONIX INC. WILL NOT BE RESPONSIBLE FOR STABILITY OF FOUNDATION. IF SOIL BASE IS INADEQUATE, THE CONTRACTOR MUST ADD EXTRA DEPTH, WIDTH AND REINFORCING TO THE FOUNDATION AS NECESSARY TO PROVIDE A STABLE BASE.
 2. FOUNDATION MUST EXTEND A MINIMUM OF 6' BELOW THE FROST PENETRATION LINE.
 3. PIER CONCRETE TO HAVE A 28-DAY COMPRESSIVE STRENGTH 3,500 POUNDS PER SQUARE INCH MINIMUM.
 4. SCALE-BEARING SURFACE TO BE LEVEL AND ON THE SAME PLANE.

5. APPROACH-END WALLS ARE TO BE LEVEL AND ON THE SAME PLANE WITHIN 1/8".
6. PROVIDE LEVEL APPROACH SLABS AT EACH END OF SCALE AT LEAST THE WIDTH OF THE SCALE AND 1/2 THE TOTAL LENGTH OF THE SCALE, THE 10'-0" ADJACENT TO THE SCALE PER DETAILS BELOW. THE REMAINING APPROACH MAY SLOPE SLIGHTLY AWAY FROM THE SCALE AND MAY BE CONSTRUCTED OF ASPHALT OR GRAVEL RATHER THAN CONCRETE. WHERE FOUNDATION CONSTRUCTION TECHNIQUES ALLOW, THE SURFACE OF THE OPTIONAL 4" THICK CONCRETE SLAB MUST BE SLOPED DOWN FROM THE LONGITUDINAL CENTERLINE TO EACH SIDE TO PREVENT DIRT AND WATER ACCUMULATION UNDER SCALE.

8. WITH CLEAN-OUT SLAB FLUSH WITH TOP OF PIERS AS SHOWN, NOMINAL SCALE CLEARANCE IS BMS 3 1/2" & BMC 4". IF LOCAL CODE OR CUSTOMER REQUIREMENTS DICTATE ADDITIONAL CLEARANCE, LOWER THE CLEAN-OUT SLABS SUFFICIENTLY TO PROVIDE REQUIRED CLEARANCES.
9. LOCATION OF CABLING CONDUIT, FOR CONNECTION OF INTERFACE CABLE TO INDICATOR, RECOMMENDED USING 1" MIN. DIAMETER CONDUIT FOR CABLE PROTECTION FROM SCALE SUMMING BOX AREA INTO SCALE-HOUSE NEAR FINAL SCALE INDICATOR LOCATION. FOR LIGHTNING AND INDUCED CURRENT PROTECTION, THE CONDUIT MUST BE RIGID METAL CONDUIT. SECOND CONDUIT SHOWN IS FOR #4 AWG GROUND WIRE, THIS

10. CONDUIT FROM LOCATION SHOWN TO SCALE HOUSE ELECTRICAL GROUND. MAINTAIN AT LEAST 6" OF DISTANCE BETWEEN DATA LINE, CABLE CONDUIT AND THE GROUND WIRE CONDUIT. LOCAL OR STATE REQUIREMENTS SUPERCEDE ANY OR ALL OF THE RECOMMENDATION AND DETAILS SHOWN OR DESCRIBED ON THIS DRAWING.

REVISIONS				
ZONE	LTR	DESCRIPTION	BY	DATE
	A	RELEASED FOR FIELD CONSTRUCTION	BSA	3 JUN 2004



IDENT	LENGTH	SHAPE	QUANTITY
P1	10'-9"	STR	48
P2	3'-0"	STR	64
P3	1'-9"	STR	18
P4	3'-0"	STR	6
A5	9'-6"	STR	22
A6	10'-9"	STR	20
A7	4'-2"	STR	16
CONC	1'-0"	STR	22

PIER & APPROACH CONCRETE (SEE NOTES 3 & 4)	14.9 CUBIC YARDS
NO. 4 GRADE 60 REBAR	1270'-2" (848.5 lbs)
GROUND RODS 5/8" DIA. X 8'-0" LONG STEEL COPPER OR ZINC PLATED, 4 PC'S	32'-0"
COPING 3" X 3" X 1/4" X 11'-3" LONG 2 PC'S	22'-6"
OPTIONAL CONCRETE 4" THICK CLEANOUT SLABS	8.1 CUBIC YARDS

* MAY BE PURCHASED FROM WEIGH-TRONIX INC, NOT SUPPLIED WITH SCALE.

APPROVALS: SIGNATURE & DATE
 DRAWN *Bob Steinhilber* 3 JUN 2004
 MECH. ENG. *Leon Lammers* 3 JUN 2004
 TOLERANCE
 FRACTIONS ± 1/8"
 ANGLES ± 1"
 UNLESS OTHERWISE SPECIFIED DIMENSIONS ARE IN INCHES. (XXX) DENOTES REFERENCE DATA. [mm] DENOTES METRIC DIMENSIONS
 EXCEPT AS MAY BE OTHERWISE PROVIDED BY CONTRACT, THESE DRAWINGS AND SPECIFICATIONS ARE THE PROPERTY OF WEIGH-TRONIX, INC., AND SHALL NOT BE REPRODUCED, OR COPIED, OR USED AS THE BASIS FOR THE MANUFACTURE OR SALE OF APPARATUS WITHOUT PERMISSION.
 DO NOT SCALE DRAWING

Avery Weigh-Tronix 1000 ARMSTRONG DRIVE FAIRMONT, MN 56031 USA

SHALLOW PIER CONSTRUCTION DRAWING, BMS/BMC 7011-100T

SIZE	DRAWING NO.	REV.
D	56389-0011	A
PLOT SCALE	DCN	SHEET
1' = 3'-9"	18917	1 OF 1

D56389-0011 1 A