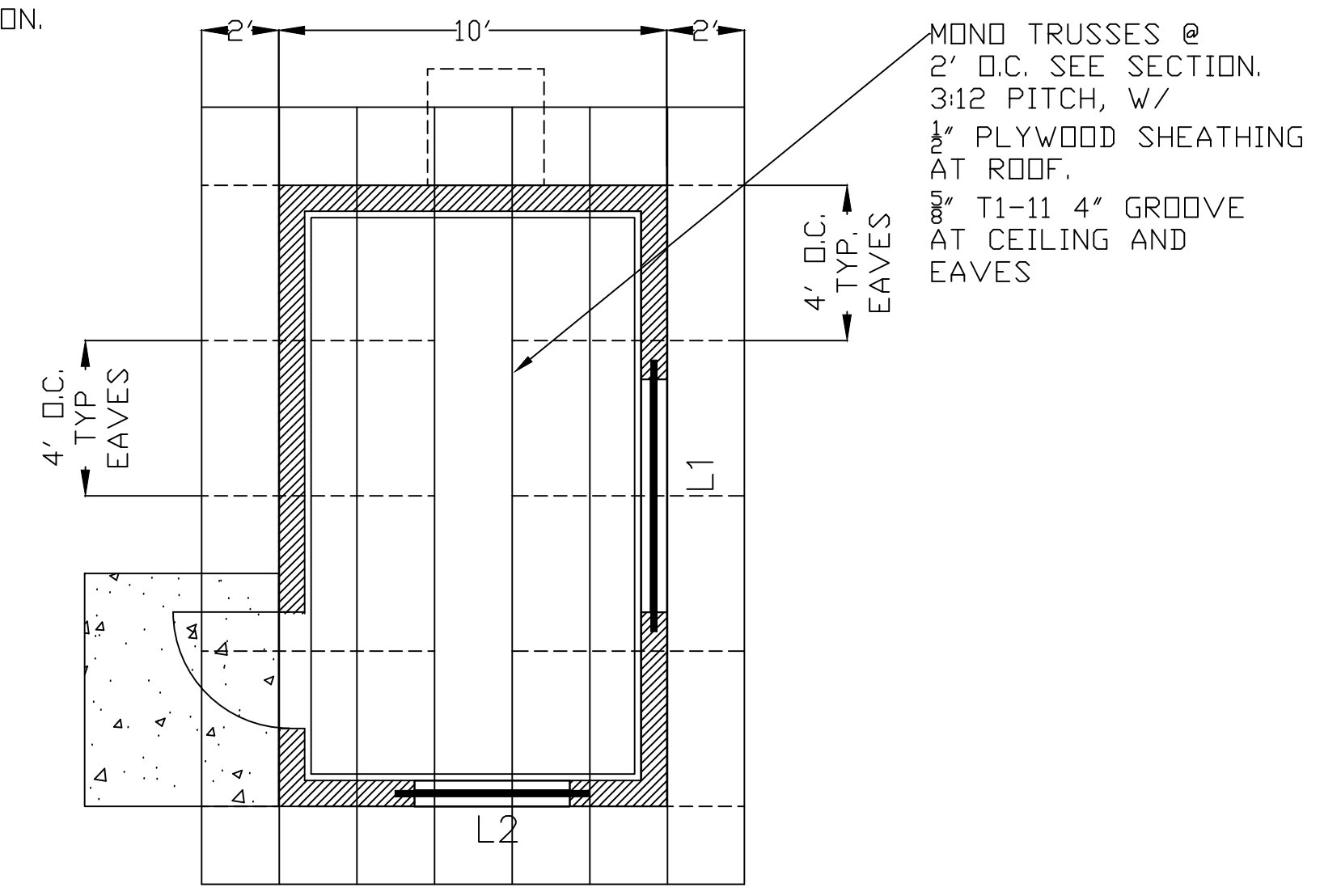
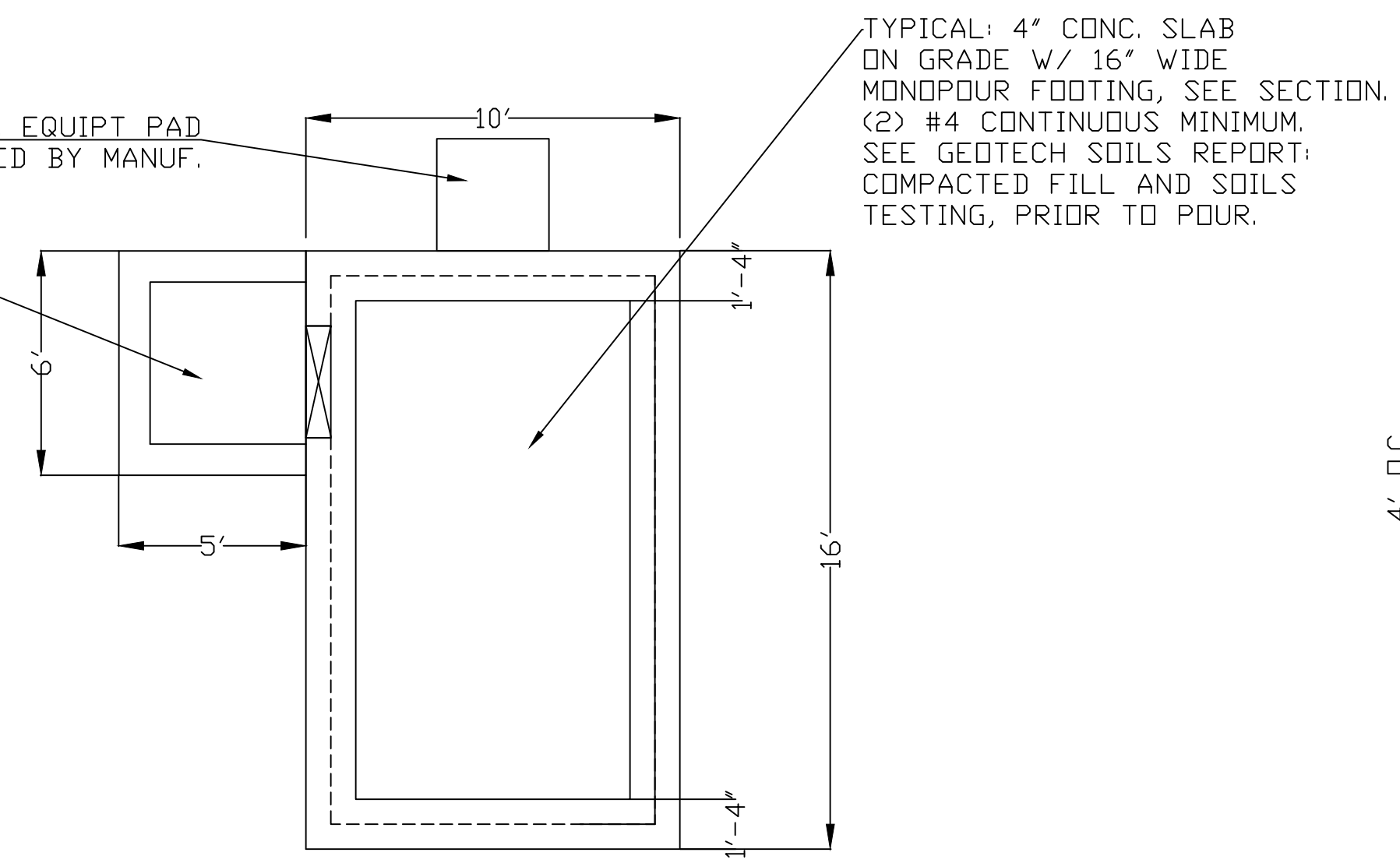
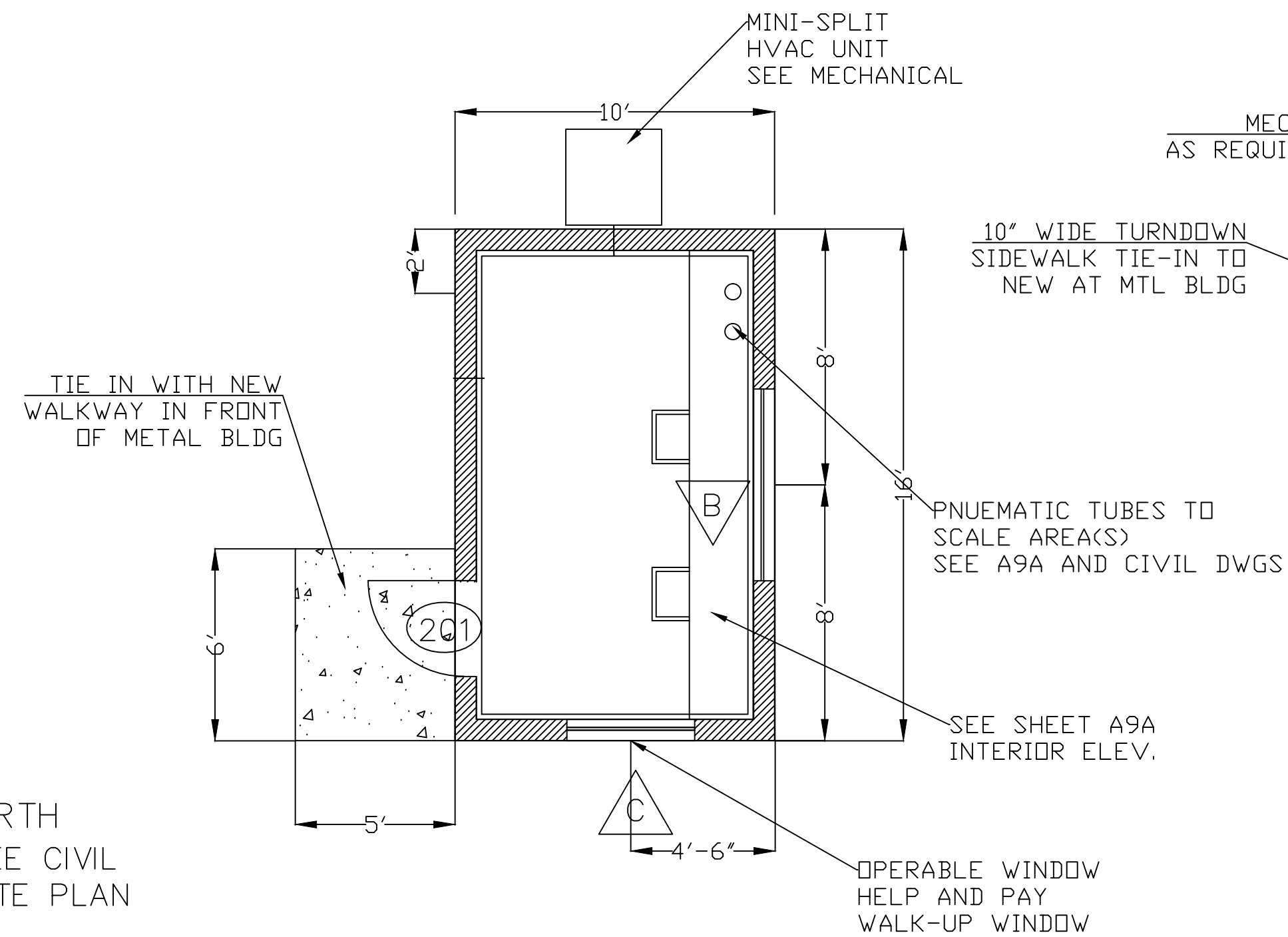


TYPICAL CMU WALL:
 8" CMU W/ #4 VERT AND HORIZ AT 4' O.C.
 GROUTED SOLID.
 BOND BMS AT 4', 8' AND 10' HEIGHTS.
 SPLIT FACED BLOCK TO 3' HT. ABOVE FIN.FLR.
 P.T. PLATE A.B. AT 6' O.C. MAX, 1/2" DIA. X 10"
 MIN. 7" EMBEDMENT, MIN. (2) PER PLATE,
 MAX. 12" FROM BREAKS IN PKATE.

TERMITE TREATMENT REQUIRED.
 PROVIDE PROOF OF TREATMENT
 PRIOR TO POUR.

LINTELS:

- L1 6' OPENING: PS8-8" LINTEL
 W/ #5 TOP AND BOTTOM
- L2 3' OR 4' OPENING: PS8-8" LINTEL
 W/ #5 TOP ONLY



FOUNDATION

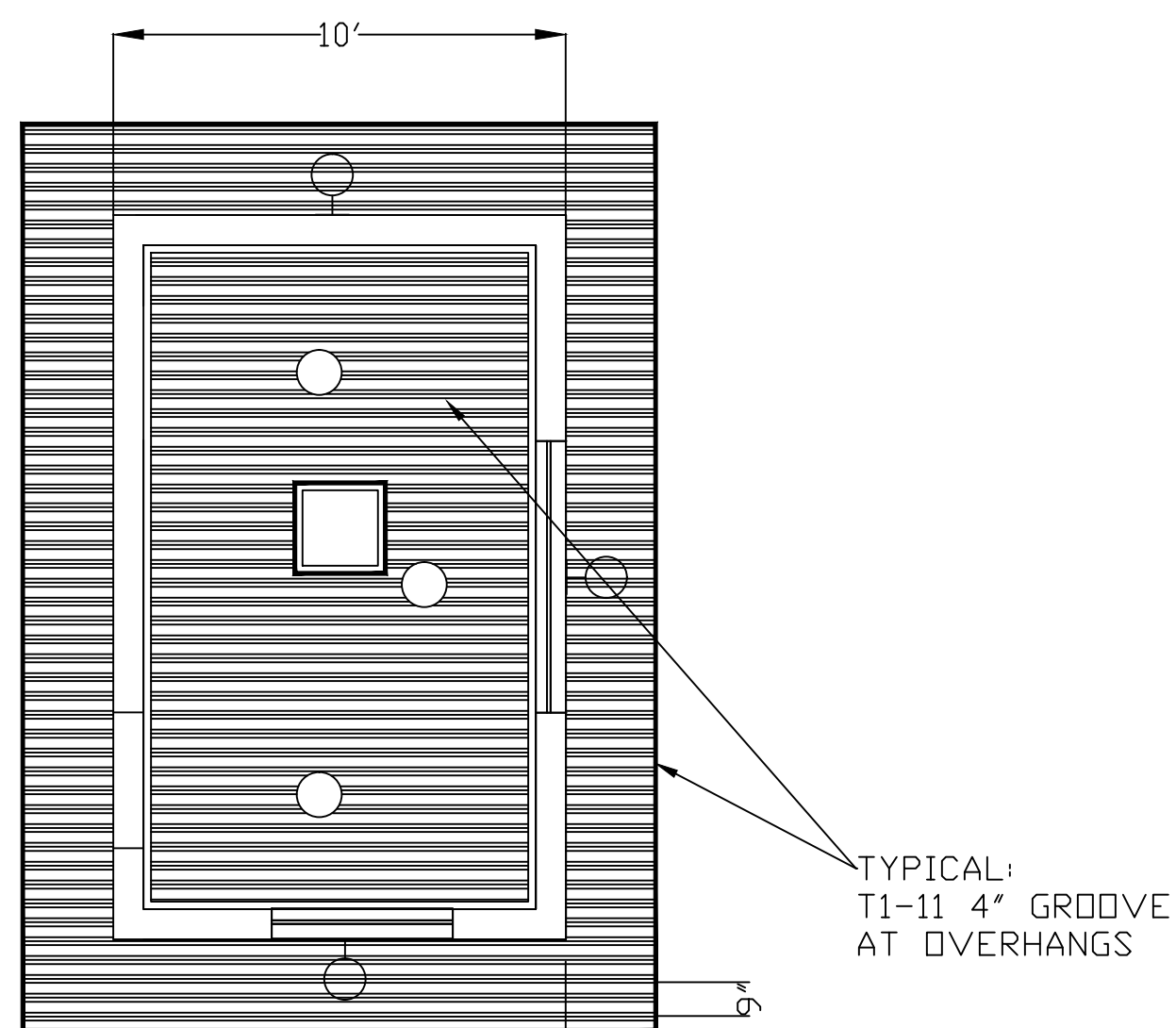
SCALE: 1/4" = 1' - 0"

ROOF FRAMING

SCALE: 1/4" = 1' - 0"

FLOOR PLAN

SCALE: 1/4" = 1' - 0"



REFLECTED CLG.

SCALE: 1/4" = 1' - 0"

GRAVITY LOADS

NOTES:

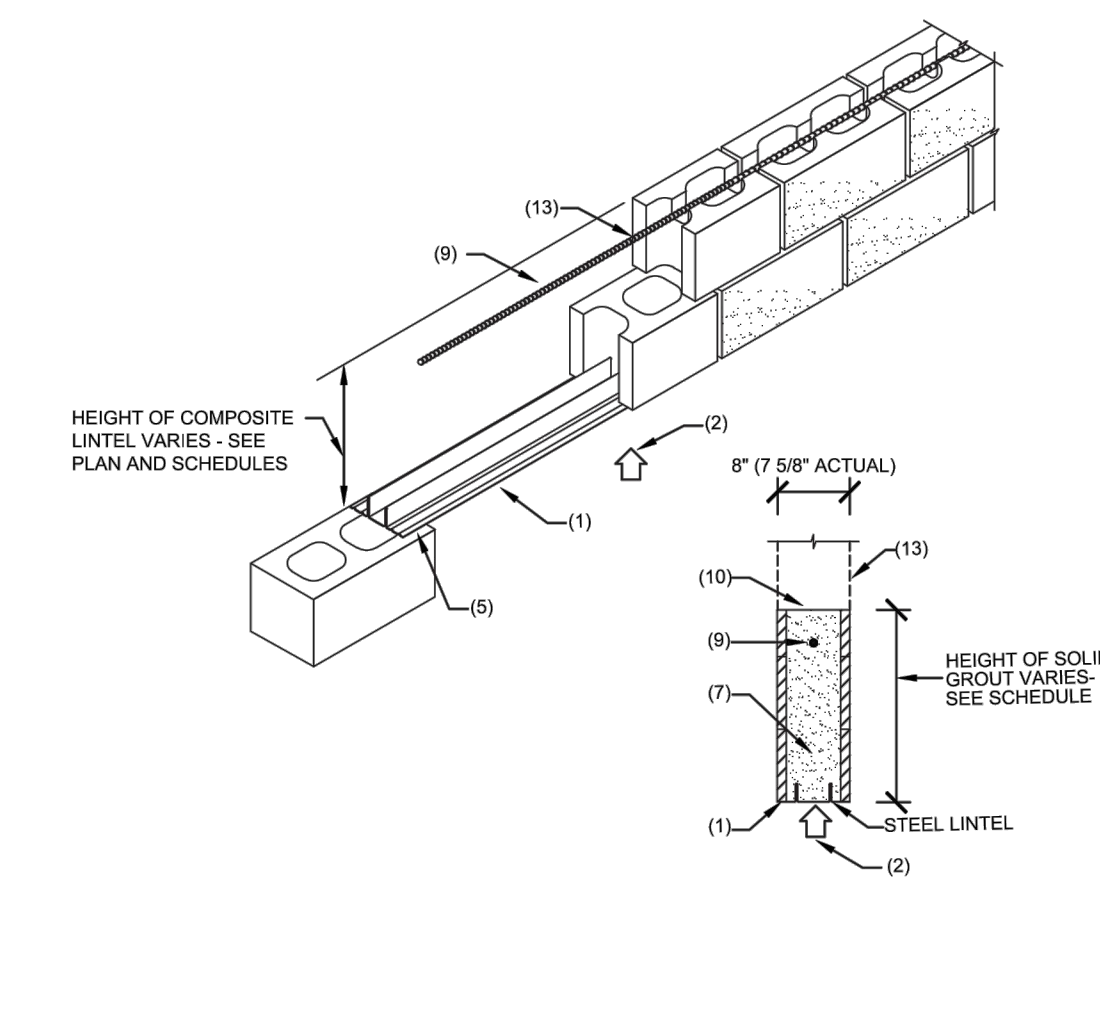
1. PRODUCT NAME (PATENT NO. 540558):
 PREFORMED POWERS STEEL LINTEL SHALL BE GALVANIZED COIL STEEL AS MANUFACTURED BY POWERS STEEL AND WIRE PRODUCTS, INC. STEEL GRADE SHALL BE ASTM A570 GRADE C (FY = 49 ksi).
2. SHORE LINTELS AS REQUIRED TO COMPENSATE FOR DEAD LOAD DEFLECTION ON NON-CURED MASONRY GROUT. ALL LINTELS GREATER THAN 8'-0" ARE BUILT WITH 2" CAMBER.
3. LINTEL TO BE USED WITH BRICK OR CONCRETE MASONRY UNITS HAVING MINIMUM Pn AS SHOWN.
4. STEEL SURFACES IN CONTACT WITH GROUT AND/OR MORTAR SHALL BE UNPAINTED AND FREE OF MATERIAL THAT MIGHT INHIBIT BOND.
5. BEARING EACH END SHALL BE 3" ± 1/2" BEARING SHALL BE ON A MINIMUM 8" DEEP GROUTED CELL PER THE STANDARD BUILDING CODE.
6. Pn = 1500 psi. MASONRY UNITS SHALL CONFORM TO ASTM C90, GRADE N.
7. GROUT = 3000 psi. SLUMP RANGE: 8" TO 11". ROD OR VIBRATE GROUT ADEQUATELY TO ENSURE CONSOLIDATION OF GROUT (NO AIR POCKETS). GROUT SHALL COMPLY WITH ASTM C494-83 AND BE EITHER COARSE OR FINE GROUT.
8. MORTAR: TYPE "S" OR TYPE "M" 1800 psi.
9. TOP REINFORCING OR TOP OF WALL REINFORCING IS REQUIRED BY CODES TO PROVIDE A CONTINUOUS TIE AROUND A STRUCTURE AND TO PROVIDE FOR UPLIFT RESISTANCE AT LINTELS.
10. ATTACHMENTS TO TOP OF WALL PER ARCHITECTURAL AND/OR ENGINEERING DRAWINGS.
11. LIMITATIONS:
 THE LINTELS SHALL NOT EXCEED THE ALLOWABLE DESIGN LOADS AND SPANS SHOWN IN THIS REPORT.
 THE LINTELS SHALL NOT BE USED IN A FIRE RESISTANCE RATED ASSEMBLY UNLESS A TEST REPORT DOCUMENTING FIRE RESISTANCE IS SUBMITTED TO THE BUILDING OFFICIAL.
 A PROPER BARRIER IS REQUIRED WHEN USING CORROSIVE LUMBER PRODUCTS IN CONTACT WITH THE STEEL LINTEL. A PROPER BARRIER WOULD BE A POLYETHYLENE BARRIER WITH A 10 MIL THICKNESS OR TO MAINTAIN A MIN. 1/4" SPACING BETWEEN THE CORROSIVE LUMBER AND STEEL LINTEL.
 NOT FOR USE IN THE HVHZ IN MIAMI OR BROWARD COUNTIES AT THIS TIME. MIAMI DADE COMPLIANCE IS BEING SOUGHT.
12. DEFLECTION LIMITS ARE SET TO L/80 FOR ALL LOADS SHOWN ABOVE THE DASHED SOLID LINE. REFLECTION LIMITS ARE SET TO L/240 (LIVE LOAD) AND L/240 (DEAD + LIVE LOAD) FOR ALL LOADS SHOWN BELOW DASHED SOLID LINE, EXCEPT 8" COMPOSITE LINTELS WHICH ARE SET TO L/240 (LIVE LOAD) AND L/180 (DEAD + LIVE LOAD).
13. ALL LOADS SHOWN IN TABLES ARE SUPERIMPOSED LOADS. TABLES ARE DATED 01/2011 AND CLEARLY INDICATE SUPERIMPOSED LOADS.
14. A #5 REINFORCING BAR (GRADE 40) IS TO SET APPROX. 1-1/2" FROM TOP OF ALL LINTEL DESIGNS AND IN SOME CASES ON THE BOTTOM OF LINTEL AS SHOWN ON LOAD TABLES. TOP HORIZONTAL REINFORCEMENT IS TO BE A CONTINUOUS TIE AS NOTED IN NOTE #9. IN THE CASE THAT THE LINTEL IS NOT WITHIN A COMPOSITE BOND BEAM SYSTEM, TOP HORIZONTAL REINFORCEMENT IS TO EXTEND 2'-0" PAST INSIDE OF JAMBS.
15. MANUFACTURER:
POWERS STEEL
 411 E. ELWOOD PHOENIX, AZ 85040
 PH: 602-437-1100 FAX: 602-437-5409
16. TECHNICAL DATA AND ENGINEERING POWERS LINTELS HAVE BEEN DESIGNED IN ACCORDANCE WITH THE FOLLOWING:
 - FLORIDA BUILDING CODE - 2008 (SEVENTH EDITION)
 - AISI NORTH AMERICAN SPECIFICATIONS FOR THE DESIGN OF COLD-FORMED STEEL - 2010
 - TMS 402-54
17. TECHNICAL ASSISTANCE IS AVAILABLE FROM THE MANUFACTURER ON SPECIAL DESIGN CONCERNS OR LINTEL DEPTHS DIFFERENT THAN THOSE SHOWN IN THE LOAD TABLES.
 STRUCTURAL ENGINEER FOR THESE LINTELS IS:
S.E. CONSULTANTS, INC.
 3801 E. THOMAS RD. SUITE 104
 SCOTTSDALE, AZ 85251
 PHONE No. (480) 946-2000
 FAX (480) 946-1900
18. IF AN INSPECTOR, CONTRACTOR, SUBCONTRACTOR, OR PLANS EXAMINER HAS ANY TECHNICAL QUESTIONS PLEASE CALL.
 INSTALLATION:
 POWERS LINTELS ARE TO BE INSTALLED IN ACCORDANCE WITH STANDARD CONSTRUCTION PRACTICES, SET TO PROPER LINE AND LEVEL, PLUMB AND TRUE, AND IN CORRECT RELATION TO OTHER WORK.

PS8-L2) STEEL LINTELS
 NOTE:
 16 GAGE IS .060 INCHES THICK.

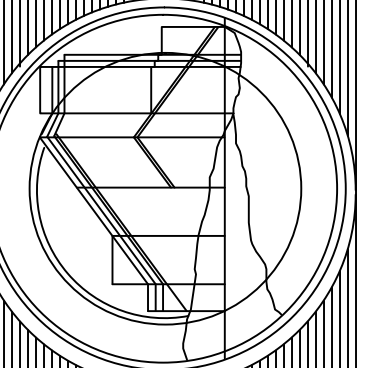
Powers Steel Product Lintel (Gravity)

LINTEL DESCRIPTION W/O STIRRUPS

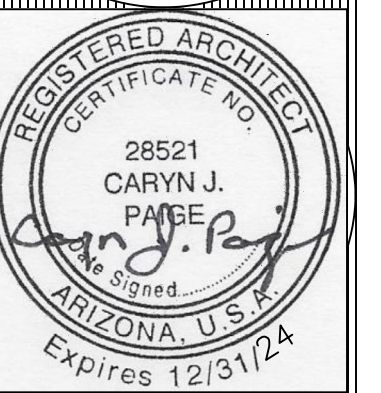
INDICATES HEIGHT OF GROUT
PS8 - 16" (L-2)



CARYN J. PAIGE, ARCHITECT
 CANYON COUNTRY DESIGN INC.
 YOUNG, AZ



RUSSELL GULCH LANDFILL
 NEW SCALEHOUSE



A9