



EXAMPLE OF EXTERIOR UNIT SECURITY FENCING

SUSPENDED CEILING/GRID AT HALLWAY FOR MECH DUCT RUNS AND ACCESS. CEILING HT 8'-6" MIN.

6X BEAM AT LOBBY CLG TRANSITION HARD 10' HT TO 8'-6" AT HALLWAY

SOFFIT ABOVE KITCHEN AREA OF BREAKROOM 8'-6" HT AT SOFFIT. SEE SECTION C AND ROOF FRAMING, 6X BM ACROSS W/ SUSPENDED CLG TRANSITION

EXTERIOR HEAT PUMP ON CONC. SLAB ON GRADE, TIE IN UP WALL TO ATTIC SPACE. SEE PHOTO

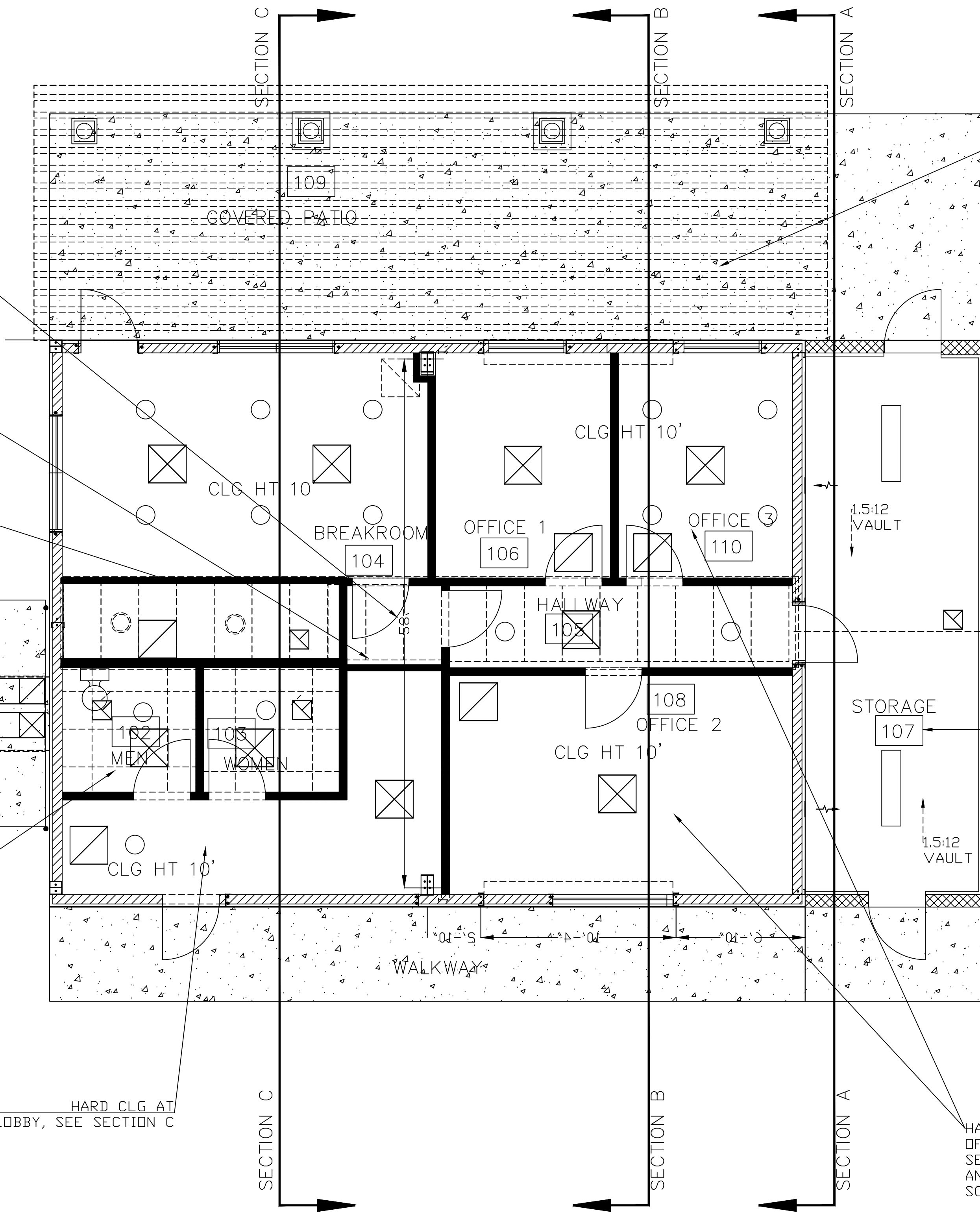
SUSPENDED CEILING 8'-6" HT. AT RESTROOMS, SEE SECTION C

HARD CLG AT LOBBY, SEE SECTION C

SEE ROOM FINISH SCHEDULE WOOD CEILING, T1-11 W/4" GROOVE ATTACHED TO UNDERSIDE OF RAFTERS. SEAL WOOD FROM MOISTURE

HARD CEILING, VAULTED SEE SECTION A

HARD CEILING AT OFFICES, GYP. BD. SEE SECTION B, AND ROOM FINISH SCHEDULE



KEYNOTES - BASIC CEILING DETAILS		NOTAS - DETALLES BASICOS DE PLAFON	
DISCOURS - DETALS DU PLAFOND DE BASE			
1	ATTACH WALL ANGLE AT CEILING PERIMETER	1	PLACA ANGULO PERIMETRAL AL MUR
2	FLUSH ANGLE PERIMETRAL AL MUR	2	ANGULO PERIMETRAL
3	REMOVE CLIP FROM CROSS TEE AT WALL ANGLE	3	REMOVER CLIP FROM CROSS TEE AT WALL ANGLE
4	FLUSH ANGLE TO CLIP OF TEE SECONDARY AL ANGULO PERIMETRAL	4	ANGULO PERIMETRAL AL ANGULO PERIMETRAL
5	FLUSH ANGLE TO CLIP OF TEE SECONDARY AL ANGULO PERIMETRAL	5	ANGULO PERIMETRAL AL ANGULO PERIMETRAL
6	REMOVE CLIP FROM MAIN TEE AT WALL ANGLE	6	REMOVER CLIP FROM MAIN TEE AT WALL ANGLE
7	FLUSH ANGLE TO CLIP OF TEE SECONDARY AL ANGULO PERIMETRAL	7	ANGULO PERIMETRAL AL ANGULO PERIMETRAL
8	REMOVE CLIP FROM MAIN TEE AT WALL ANGLE	8	REMOVER CLIP FROM MAIN TEE AT WALL ANGLE
9	FLUSH ANGLE TO CLIP OF TEE SECONDARY AL ANGULO PERIMETRAL	9	ANGULO PERIMETRAL AL ANGULO PERIMETRAL
10	REMOVE CLIP FROM MAIN TEE AT WALL ANGLE	10	REMOVER CLIP FROM MAIN TEE AT WALL ANGLE
11	FLUSH ANGLE TO CLIP OF TEE SECONDARY AL ANGULO PERIMETRAL	11	ANGULO PERIMETRAL AL ANGULO PERIMETRAL
12	REMOVE CLIP FROM MAIN TEE AT WALL ANGLE	12	REMOVER CLIP FROM MAIN TEE AT WALL ANGLE
13	FLUSH ANGLE TO CLIP OF TEE SECONDARY AL ANGULO PERIMETRAL	13	ANGULO PERIMETRAL AL ANGULO PERIMETRAL
14	REMOVE CLIP FROM MAIN TEE AT WALL ANGLE	14	REMOVER CLIP FROM MAIN TEE AT WALL ANGLE
15	FLUSH ANGLE TO CLIP OF TEE SECONDARY AL ANGULO PERIMETRAL	15	ANGULO PERIMETRAL AL ANGULO PERIMETRAL
16	REMOVE CLIP FROM MAIN TEE AT WALL ANGLE	16	REMOVER CLIP FROM MAIN TEE AT WALL ANGLE
17	FLUSH ANGLE TO CLIP OF TEE SECONDARY AL ANGULO PERIMETRAL	17	ANGULO PERIMETRAL AL ANGULO PERIMETRAL
18	REMOVE CLIP FROM MAIN TEE AT WALL ANGLE	18	REMOVER CLIP FROM MAIN TEE AT WALL ANGLE
19	FLUSH ANGLE TO CLIP OF TEE SECONDARY AL ANGULO PERIMETRAL	19	ANGULO PERIMETRAL AL ANGULO PERIMETRAL
20	REMOVE CLIP FROM MAIN TEE AT WALL ANGLE	20	REMOVER CLIP FROM MAIN TEE AT WALL ANGLE

1. NOT FOR CONSTRUCTION. NO FOTO PARA CONSTRUCCION. NE PAS USER POUR CONSTRUCTION.

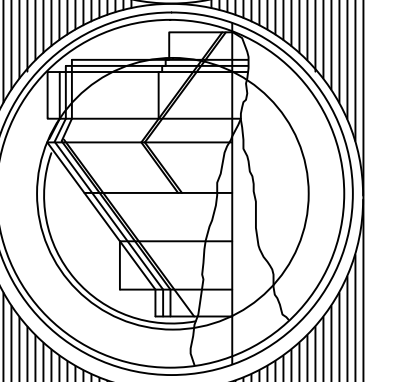
USG BASIC GRID DETAILS (NON SEISMIC)
 DETALLES BASICOS DEL SISTEMA DE SUSPENSION (SIN RESISTENCIA SISMICA)
 DETALLES DE GRILLA DE PLAFOND DE BASE (SYSTEME NON SISMIQUE)

USG SLB EDGE
 DX / DXL GRID
 SC3128

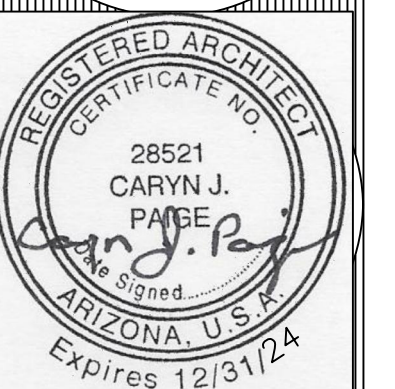
REFLECTED CLG PLAN

SCALE: 1/4" = 1' - 0"

CARYN J. PAIGE, ARCHITECT
 CANYON COUNTRY DESIGN INC.
 YOUNG, AZ



RUSSELL GULCH LANDFILL
 OFFICES/SCALEHOUSE



A11