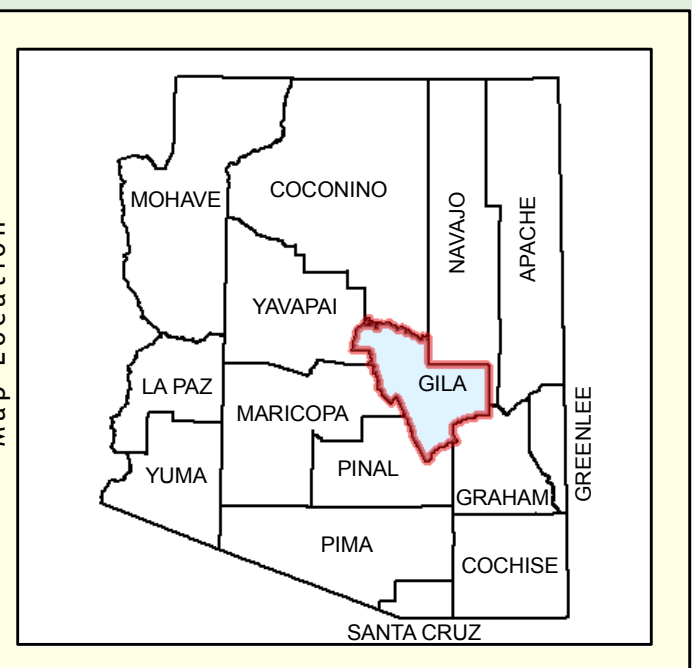
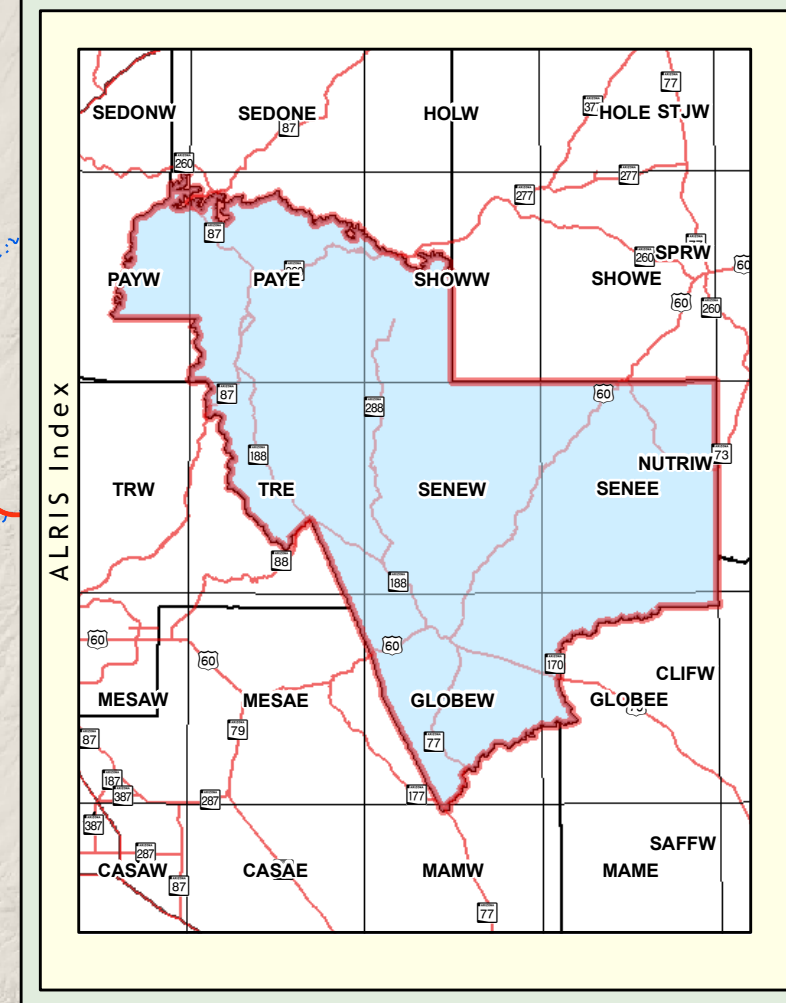
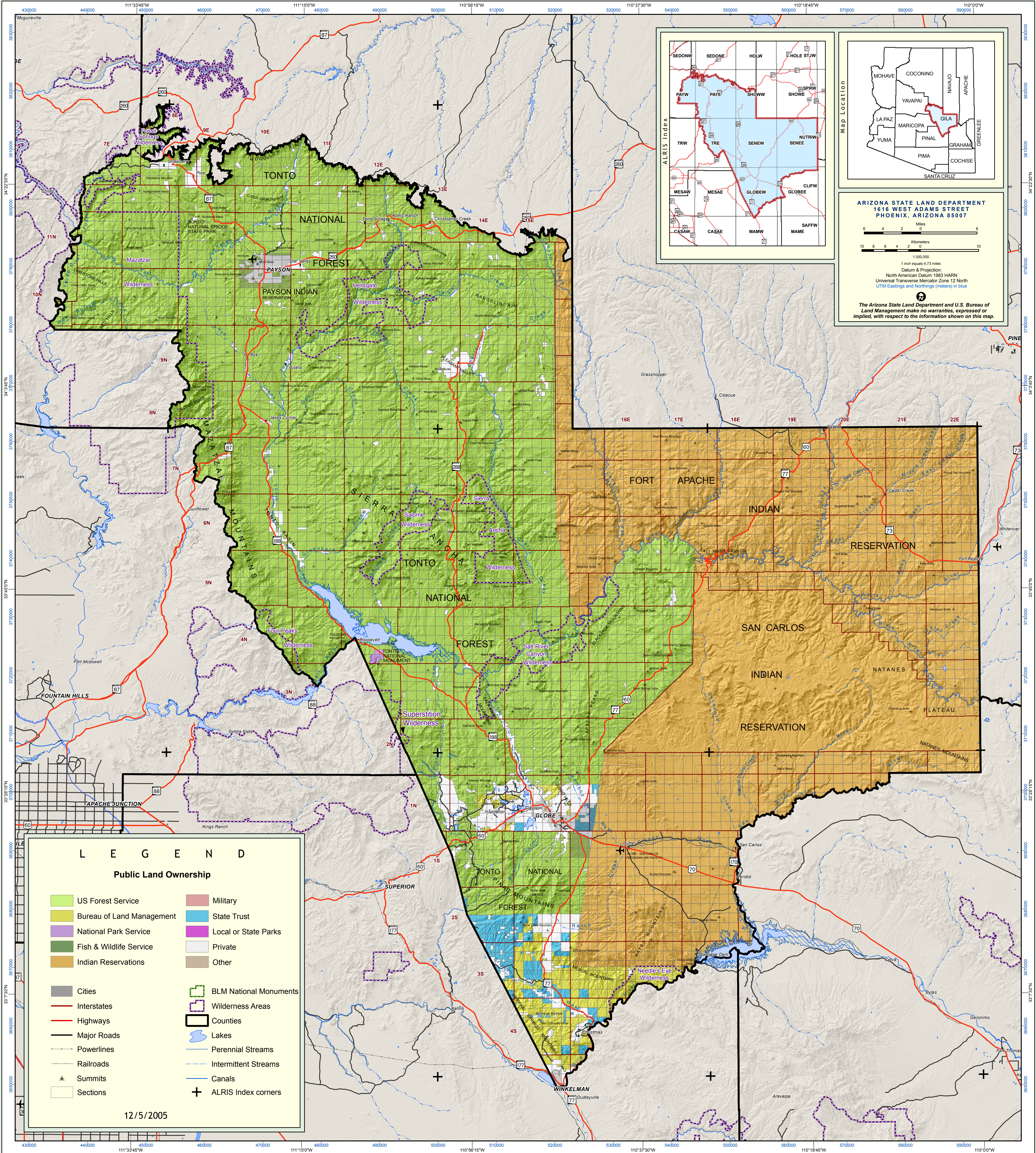
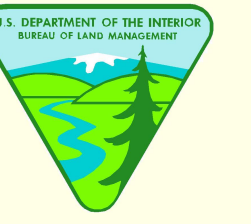




# GILA COUNTY MANAGEMENT RESPONSIBILITY

Arizona State Land Department / U.S. Bureau of Land Management  
State and Federal Government Working Together



**ARIZONA STATE LAND DEPARTMENT**  
1616 WEST ADAMS STREET  
PHOENIX, ARIZONA 85007

Miles  
0 2 4 6

Kilometers  
0 2 4 6 8 10

1:300,000  
1 inch equals 4.73 miles  
Datum & Projection:  
North American Datum 1983 HARN  
Universal Transverse Mercator Zone 12 North  
UTM Eastings and Northings (meters) in blue

The Arizona State Land Department and U.S. Bureau of Land Management make no warranties, expressed or implied, with respect to the information shown on this map.

**LEGEND**

**Public Land Ownership**

US Forest Service	Military
Bureau of Land Management	State Trust
National Park Service	Local or State Parks
Fish & Wildlife Service	Private
Indian Reservations	Other

Cities	BLM National Monuments
Interstates	Wilderness Areas
Highways	Counties
Major Roads	Lakes
Powerlines	Perennial Streams
Railroads	Intermittent Streams
Summits	Canals
Sections	ALRIS Index corners

12/5/2005