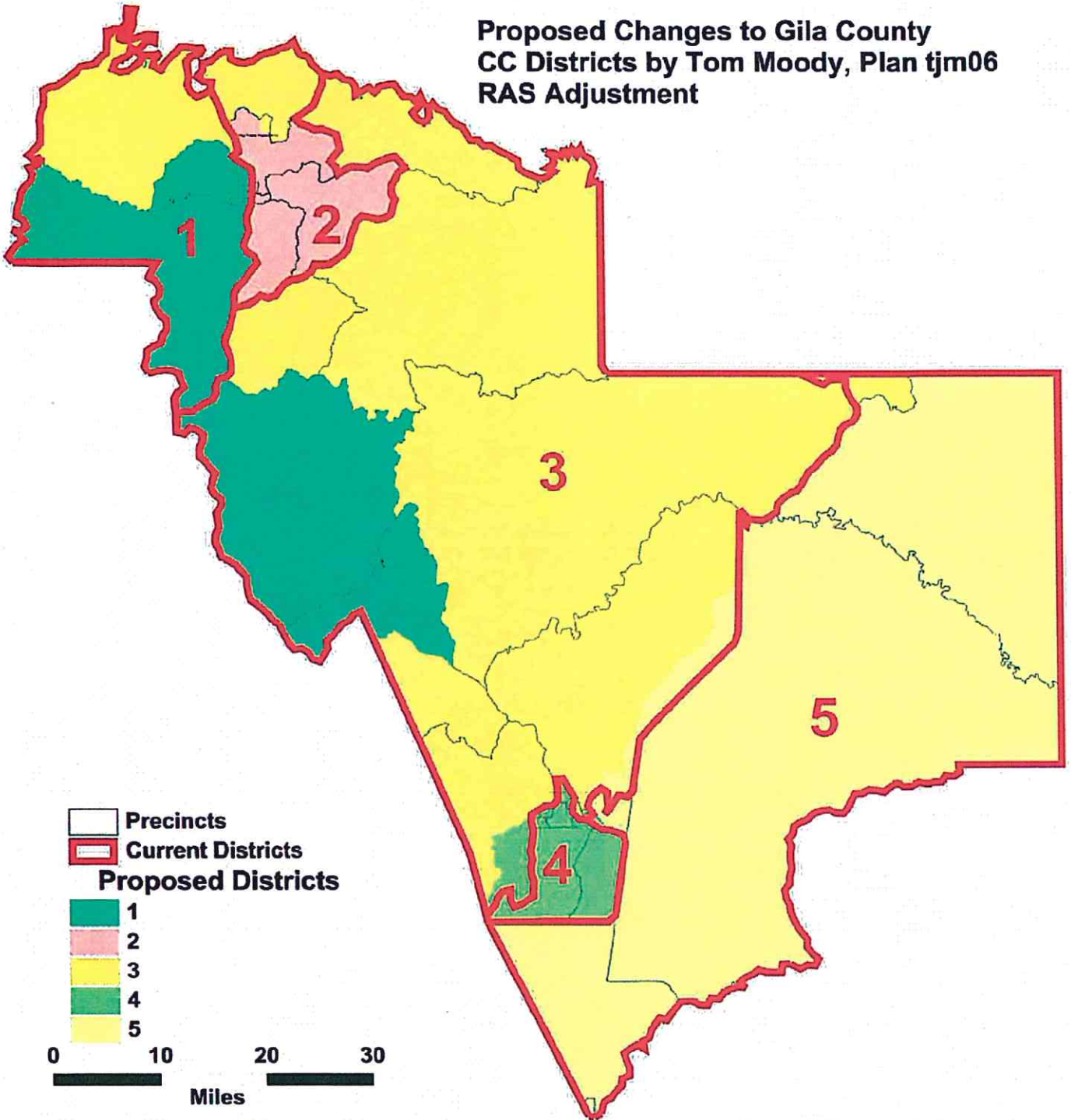


**Proposed Changes to Gila County
CC Districts by Tom Moody, Plan tjm06
RAS Adjustment**



Plan TJM06, Payson Area

Payson #8

Payson #5

Payson #4

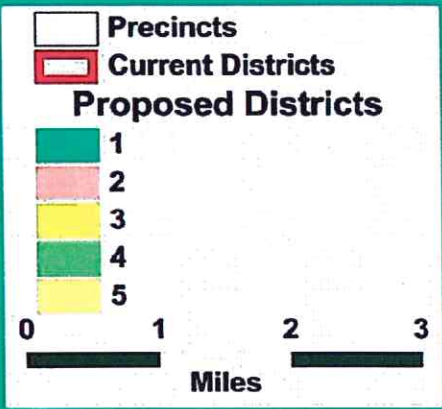
Star Valley

Payson #3

Payson #6

Payson #1

Payson #2

The legend is located in the bottom-left corner of the map. It contains three main sections: 'Precincts' with a white square icon, 'Current Districts' with a red-outlined square icon, and 'Proposed Districts' with five colored squares corresponding to districts 1 through 5. Below the legend is a scale bar labeled 'Miles' with markings at 0, 1, 2, and 3.

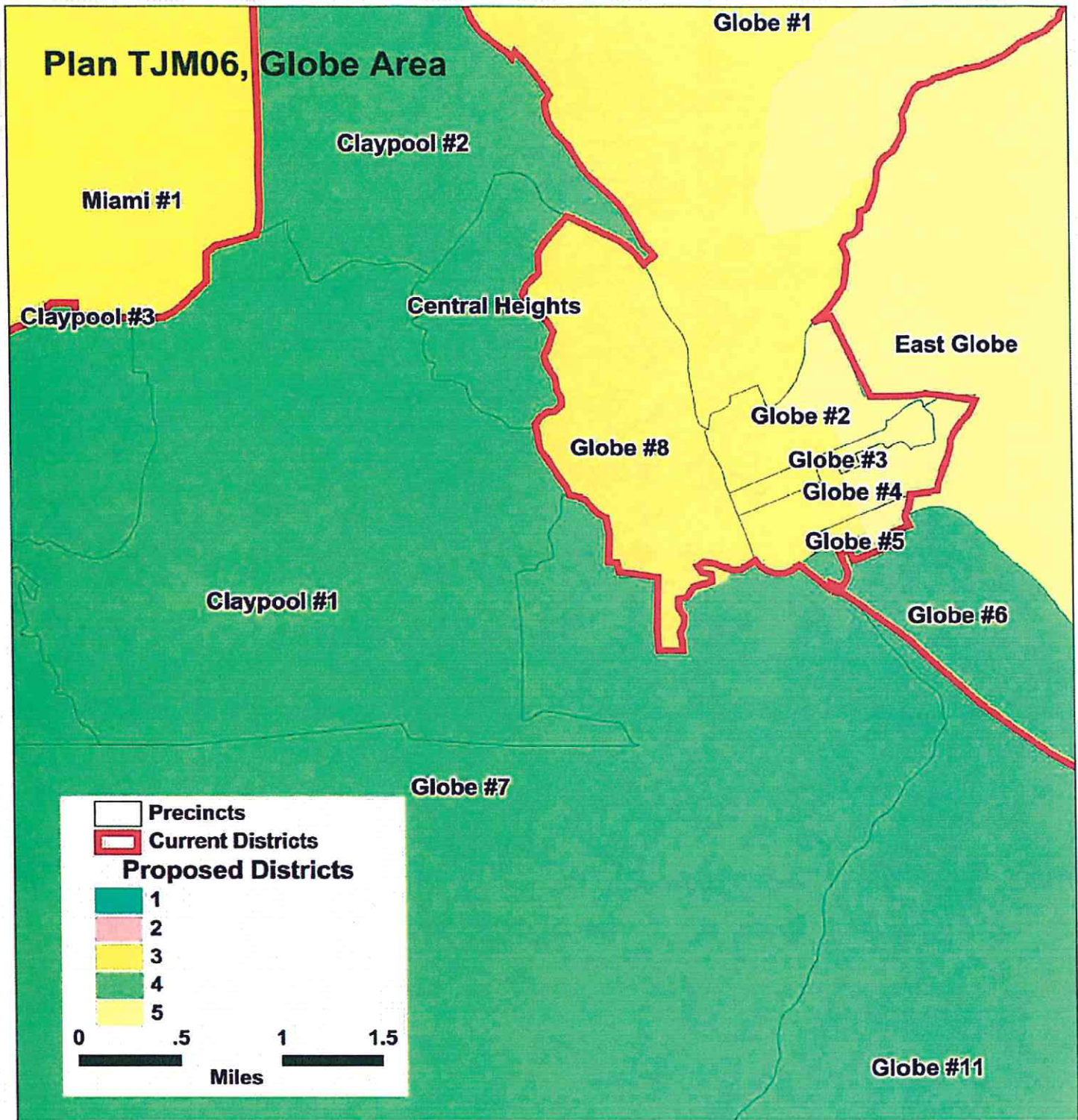
Precincts

Current Districts

Proposed Districts

- 1
- 2
- 3
- 4
- 5

0 1 2 3
Miles



**GILA COUNTY COMMUNITY COLLEGE DISTRICTS
TOTAL POPULATION BY RACE AND HISPANIC ORIGIN
PLAN SUBMITTED BY: Tom Moody CCD PLAN tjm06**

<u>Number:</u>	<u>District 1</u>	<u>District 2</u>	<u>District 3</u>	<u>District 4</u>	<u>District 5</u>	<u>Total, All Districts</u>
Hispanic, of any race	936	1,019	2,052	3,622	1,959	9,588
Non-Hispanic White	9,313	9,328	8,298	6,535	1,824	35,298
Non-Hispanic Black	61	39	31	73	44	248
Non-Hispanic American Indian	238	301	423	452	6,561	7,975
Non-Hispanic Asian	57	80	73	80	31	321
Non-Hispanic Hawaiian	9	8	13	9	0	39
Non-Hispanic other race	16	17	11	18	4	66
Non-Hispanic two or more races	7	14	14	11	16	62
Total Population	10,637	10,806	10,915	10,800	10,439	53,597

<u>Percent:</u>	<u>District 1</u>	<u>District 2</u>	<u>District 3</u>	<u>District 4</u>	<u>District 5</u>	<u>Total</u>
Hispanic, of any race	8.80%	9.43%	18.80%	33.54%	18.77%	17.89%
Non-Hispanic White	87.55%	86.32%	76.02%	60.51%	17.47%	65.86%
Non-Hispanic Black	0.57%	0.36%	0.28%	0.68%	0.42%	0.46%
Non-Hispanic American Indian	2.24%	2.79%	3.88%	4.19%	62.85%	14.88%
Non-Hispanic Asian	0.54%	0.74%	0.67%	0.74%	0.30%	0.60%
Non-Hispanic Hawaiian	0.08%	0.07%	0.12%	0.08%	0.00%	0.07%
Non-Hispanic other race	0.15%	0.16%	0.10%	0.17%	0.04%	0.12%
Non-Hispanic two or more races	0.07%	0.13%	0.13%	0.10%	0.15%	0.12%
Total Percent	100.00%	100.00%	100.00%	100.00%	100.00%	100.00%

Ideal Population	10,719	10,719	10,719	10,719	10,719	Total
Total Population	10,637	10,806	10,915	10,800	10,439	deviation:
Numeric deviation from Ideal Value	-82	87	196	81	-280	476
Percent deviation from Ideal Value	-0.77%	0.81%	1.82%	0.75%	-2.62%	4.44%

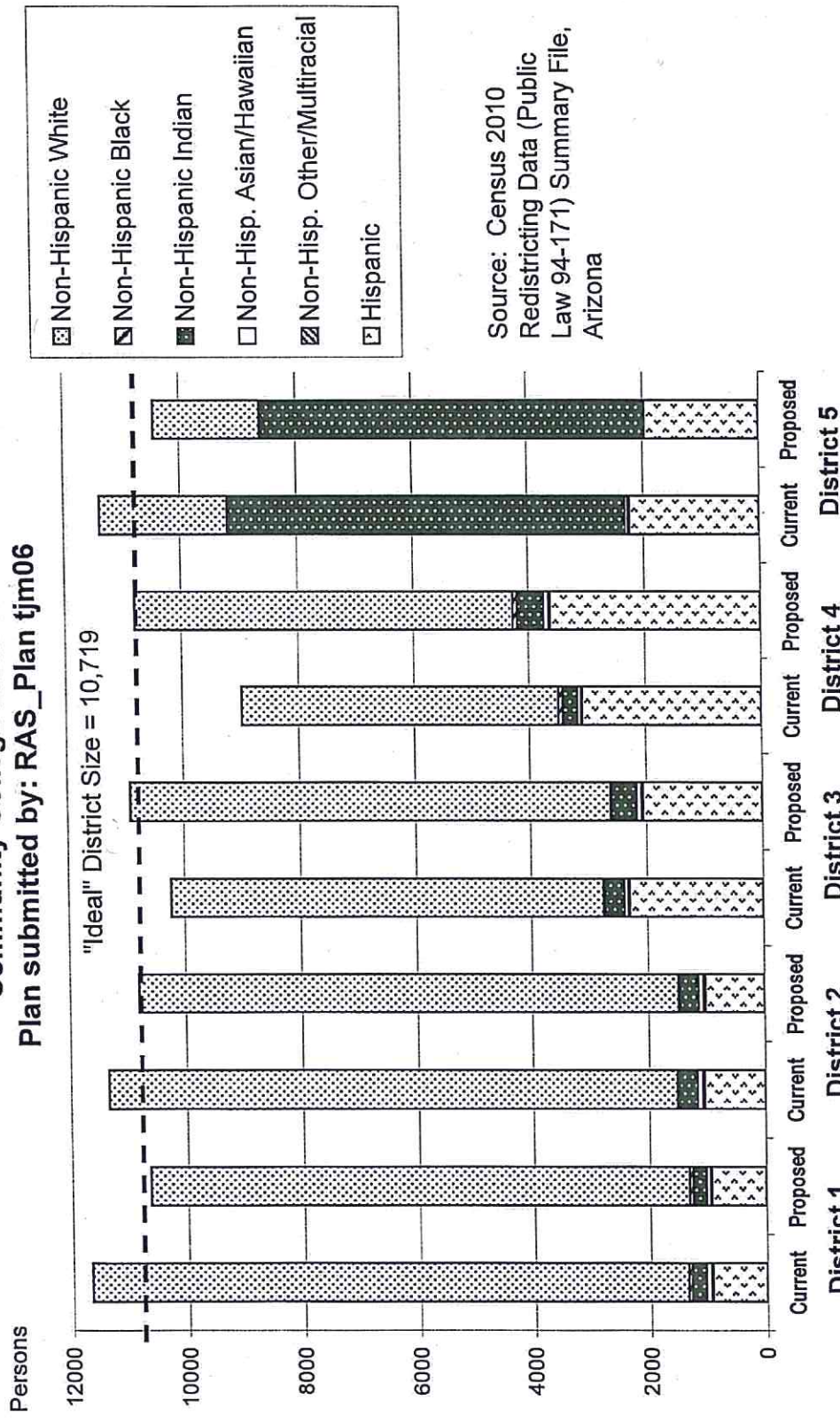
Source: Census 2010 Redistricting Data (Public Law 94-171) Summary file, Arizona
Tabulation: Research Advisory Services, Inc., Phoenix AZ (602) 230-9580

**GILA COUNTY COMMUNITY COLLEGE DISTRICTS
VOTING-AGE POPULATIONS BY RACE AND HISPANIC ORIGIN
PLAN SUBMITTED BY: Tom Moody CCD PLAN tjm06**

<u>Voting-Age Number:</u>	<u>District 1</u>	<u>District 2</u>	<u>District 3</u>	<u>District 4</u>	<u>District 5</u>	<u>Total, All Districts</u>
Hispanic, of any race	581	662	1,443	2,455	1,378	6,519
Non-Hispanic White	8,012	7,920	7,206	5,239	1,545	29,922
Non-Hispanic Black	40	21	18	51	41	171
Non-Hispanic American Indian	178	218	306	303	4,140	5,145
Non-Hispanic Asian	46	65	55	67	19	252
Non-Hispanic Hawaiian	8	7	9	6	0	30
Non-Hispanic other race	7	13	9	11	4	44
Non-Hispanic two or more races	6	10	10	7	10	43
Voting-Age Population	8,878	8,916	9,056	8,139	7,137	42,126
<u>Voting-Age Percent:</u>						
Hispanic, of any race	6.54%	7.42%	15.93%	30.16%	19.31%	15.48%
Non-Hispanic White	90.25%	88.83%	79.57%	64.37%	21.65%	71.03%
Non-Hispanic Black	0.45%	0.24%	0.20%	0.63%	0.57%	0.41%
Non-Hispanic American Indian	2.00%	2.45%	3.38%	3.72%	58.01%	12.21%
Non-Hispanic Asian	0.52%	0.73%	0.61%	0.82%	0.27%	0.60%
Non-Hispanic Hawaiian	0.09%	0.08%	0.10%	0.07%	0.00%	0.07%
Non-Hispanic other race	0.08%	0.15%	0.10%	0.14%	0.06%	0.10%
Non-Hispanic two or more races	0.07%	0.11%	0.11%	0.09%	0.14%	0.10%
Voting-Age Percent	100.00%	100.00%	100.00%	100.00%	100.00%	100.00%

Source: Census 2010 Redistricting Data (Public Law 94-171) Summary file, Arizona
 Tabulation: Research Advisory Services, Inc., Phoenix AZ (602) 230-9580

**Race and Origin Composition of Current and Proposed Gila County
Community College Districts
Plan submitted by: RAS_Plan tjm06**

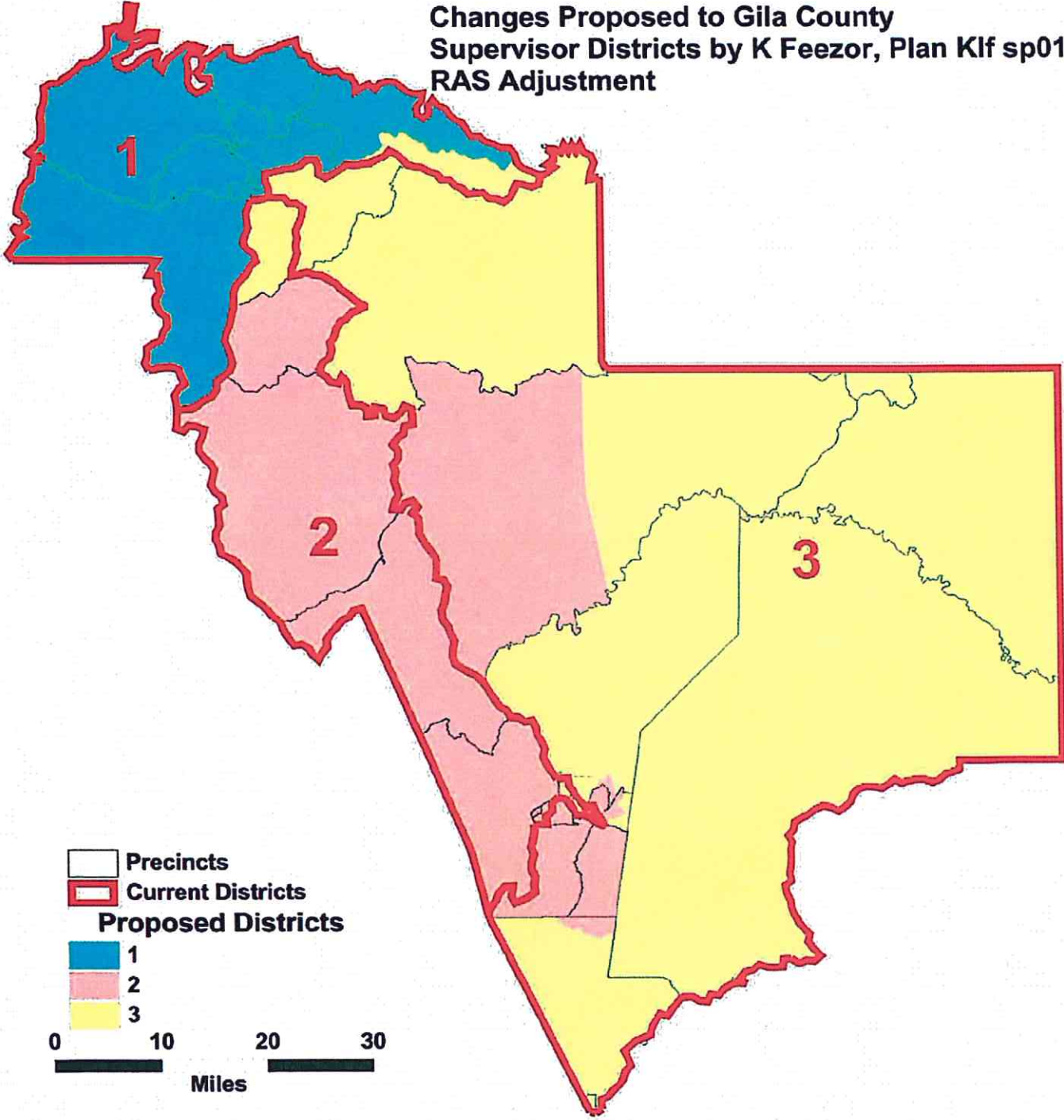


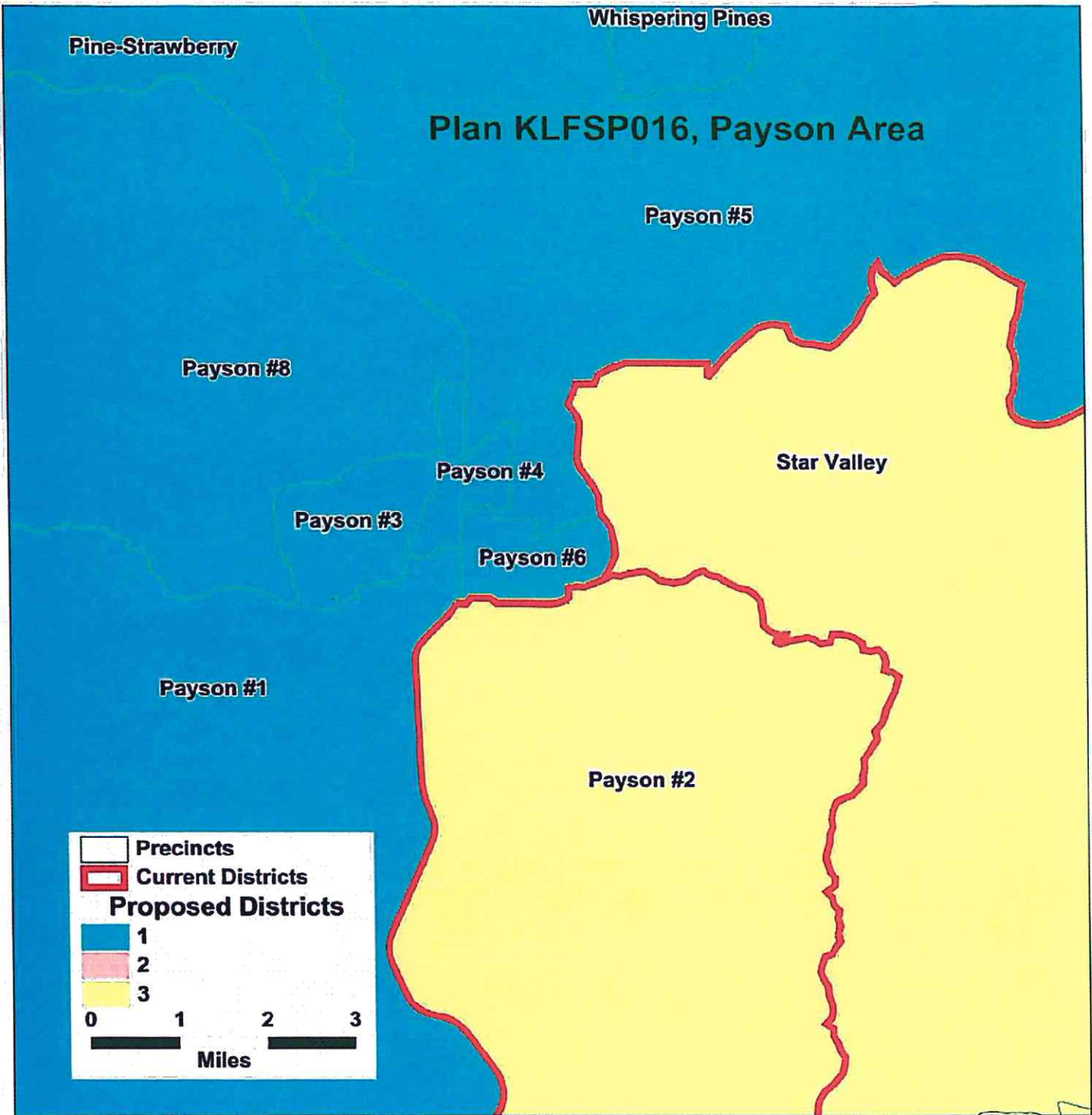
Source: Census 2010
Redistricting Data (Public
Law 94-171) Summary File,
Arizona

GILA COUNTY COMMUNITY COLLEGE DISTRICTS
PLAN SUBMITTED BY: Tom Moody CCD PLAN tjm06
RAS Adjustment

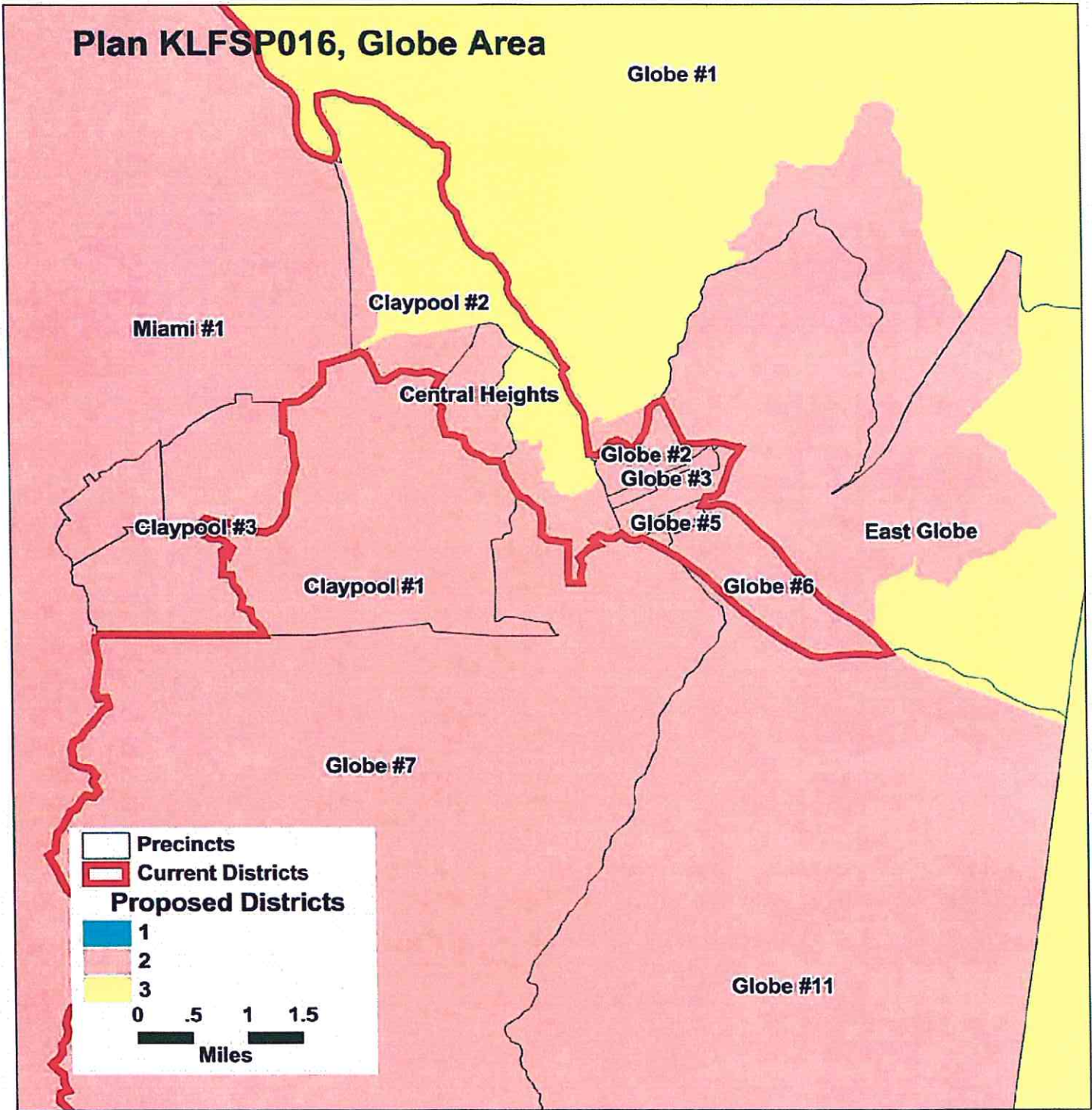
	Current Districts	Proposed Plan	Change
Population, District 1	11,670	10,637	-1,033
Population, District 2	11,342	10,806	-536
Population, District 3	10,231	10,915	684
Population, District 4	8,972	10,800	1,828
Population, District 5	11,382	10,439	-943
Population deviation, District 1	951	-82	
Population deviation, District 2	623	87	
Population deviation, District 3	-488	196	
Population deviation, District 4	-1,747	81	
Population deviation, District 5	663	-280	
Percent deviation, District 1	8.87%	-0.77%	
Percent deviation, District 2	5.81%	0.81%	
Percent deviation, District 3	-4.56%	1.82%	
Percent deviation, District 4	-16.30%	0.75%	
Percent deviation, District 5	6.18%	-2.62%	
Total plan deviation, number	2,698	476	
Total plan deviation, percent	25.17%	4.44%	
Percent voting-age Hispanic, District 1	5.89%	6.54%	0.65%
Percent voting-age Hispanic, District 2	7.24%	7.42%	0.18%
Percent voting-age Hispanic, District 3	19.20%	15.93%	-3.27%
Percent voting-age Hispanic, District 4	31.10%	30.16%	-0.94%
Percent voting-age Hispanic, District 5	19.92%	19.31%	-0.61%
Percent voting-age Non-Hispanic Native American, District 1	1.93%	2.00%	0.07%
Percent voting-age Non-Hispanic Native American, District 2	2.37%	2.45%	0.08%
Percent voting-age Non-Hispanic Native American, District 3	2.69%	3.38%	0.69%
Percent voting-age Non-Hispanic Native American, District 4	2.40%	3.72%	1.32%
Percent voting-age Non-Hispanic Native American, District 5	55.19%	58.01%	2.82%
Percent voting-age Non-Hispanic Black, District 1	0.35%	0.45%	0.10%
Percent voting-age Non-Hispanic Black, District 2	0.22%	0.24%	0.02%
Percent voting-age Non-Hispanic Black, District 3	0.35%	0.20%	-0.15%
Percent voting-age Non-Hispanic Black, District 4	0.73%	0.63%	-0.10%
Percent voting-age Non-Hispanic Black, District 5	0.48%	0.57%	0.09%
Percent voting-age total minority residents, District 1	8.97%	9.75%	0.78%
Percent voting-age total minority residents, District 2	10.91%	11.17%	0.26%
Percent voting-age total minority residents, District 3	23.12%	20.43%	-2.69%
Percent voting-age total minority residents, District 4	35.12%	35.63%	0.51%
Percent voting-age total minority residents, District 5	76.31%	78.35%	2.04%

**Changes Proposed to Gila County
Supervisor Districts by K Feezor, Plan Kl f sp016
RAS Adjustment**





Plan KLFSP016, Globe Area



GILA COUNTY SUPERVISORIAL DISTRICTS
TOTAL POPULATION BY RACE AND HISPANIC ORIGIN
PLAN SUBMITTED BY: K Feezor, RAS Adjustment kif sp016

	<u>District 1</u>	<u>District 2</u>	<u>District 3</u>	<u>Total, All Districts</u>
Number:				
Hispanic, of any race	1,465	5,257	2,866	9,588
Non-Hispanic White	15,891	11,751	7,656	35,298
Non-Hispanic Black	85	98	65	248
Non-Hispanic American Indian	356	677	6,942	7,975
Non-Hispanic Asian	114	126	81	321
Non-Hispanic Hawaiian	22	5	12	39
Non-Hispanic other race	20	24	22	66
Non-Hispanic two or more races	13	23	26	62
Total Population	17,966	17,961	17,670	53,597
Percent:				
Hispanic, of any race	8.15%	29.27%	16.22%	17.89%
Non-Hispanic White	88.45%	65.43%	43.33%	65.86%
Non-Hispanic Black	0.47%	0.55%	0.37%	0.46%
Non-Hispanic American Indian	1.98%	3.77%	39.29%	14.88%
Non-Hispanic Asian	0.63%	0.70%	0.46%	0.60%
Non-Hispanic Hawaiian	0.12%	0.03%	0.07%	0.07%
Non-Hispanic other race	0.11%	0.13%	0.12%	0.12%
Non-Hispanic two or more races	0.07%	0.13%	0.15%	0.12%
Total Percent	100.00%	100.00%	100.00%	100.00%
Ideal Population	17,866	17,866	17,866	Total 17,866
Total Population	17,966	17,961	17,670	deviation: 17,670
Numeric deviation from Ideal Value	100	95	-196	296
Percent deviation from Ideal Value	0.56%	0.53%	-1.10%	1.66%

Source: Census 2010 Redistricting Data (Public Law 94-171) Summary file, Arizona
 Tabulation: Research Advisory Services, Inc., Phoenix, AZ (602) 230-9580

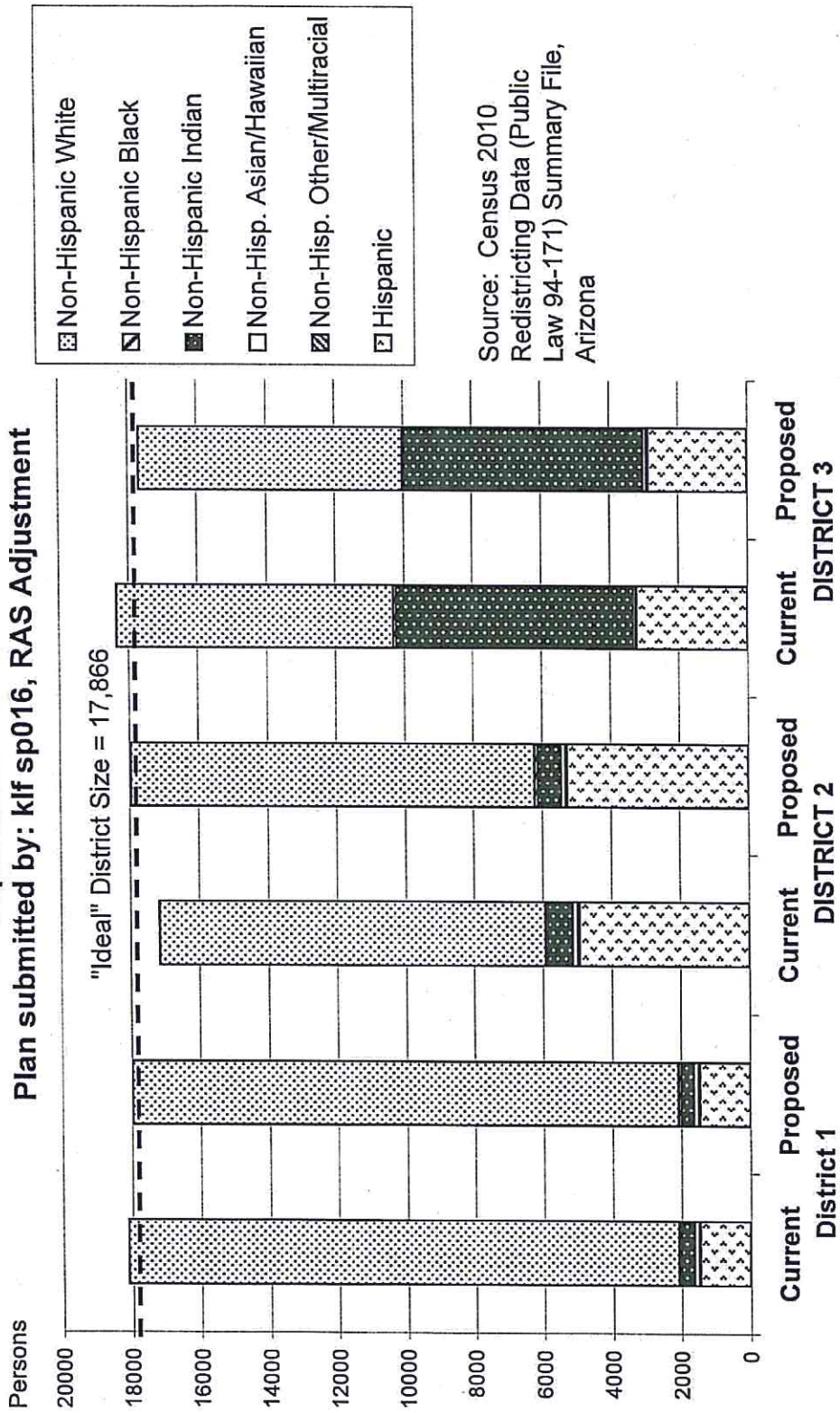
**GILA COUNTY SUPERVISORIAL DISTRICTS
 VOTING-AGE POPULATION BY RACE AND HISPANIC ORIGIN
 PLAN SUBMITTED BY: K Feezor, RAS Adjustment kif sp016**

<u>Voting-Age Number:</u>	<u>District 1</u>	<u>District 2</u>	<u>District 3</u>	<u>Total, All Districts</u>
Hispanic, of any race	945	3,629	1,945	6,519
Non-Hispanic White	13,682	9,792	6,448	29,922
Non-Hispanic Black	47	76	48	171
Non-Hispanic American Indian	265	457	4,423	5,145
Non-Hispanic Asian	90	97	65	252
Non-Hispanic Hawaiian	17	3	10	30
Non-Hispanic other race	9	16	19	44
Non-Hispanic two or more races	11	16	16	43
Voting-Age Population	15,066	14,086	12,974	42,126
<u>Voting-Age Percent:</u>				
Hispanic, of any race	6.27%	25.76%	14.99%	15.48%
Non-Hispanic White	90.81%	69.52%	49.70%	71.03%
Non-Hispanic Black	0.31%	0.54%	0.37%	0.41%
Non-Hispanic American Indian	1.76%	3.24%	34.09%	12.21%
Non-Hispanic Asian	0.60%	0.69%	0.50%	0.60%
Non-Hispanic Hawaiian	0.11%	0.02%	0.08%	0.07%
Non-Hispanic other race	0.06%	0.11%	0.15%	0.10%
Non-Hispanic two or more races	0.07%	0.11%	0.12%	0.10%
Voting-Age Percent	100.00%	100.00%	100.00%	100.00%

Source: Census 2010 Redistricting Data (Public Law 94-171) Summary file, Arizona
 Tabulation: Research Advisory Services, Inc., Phoenix AZ (602) 230-9580

Race and Origin Composition of Current and Proposed Gila County Supervisorial Districts

Plan submitted by: klf sp016, RAS Adjustment

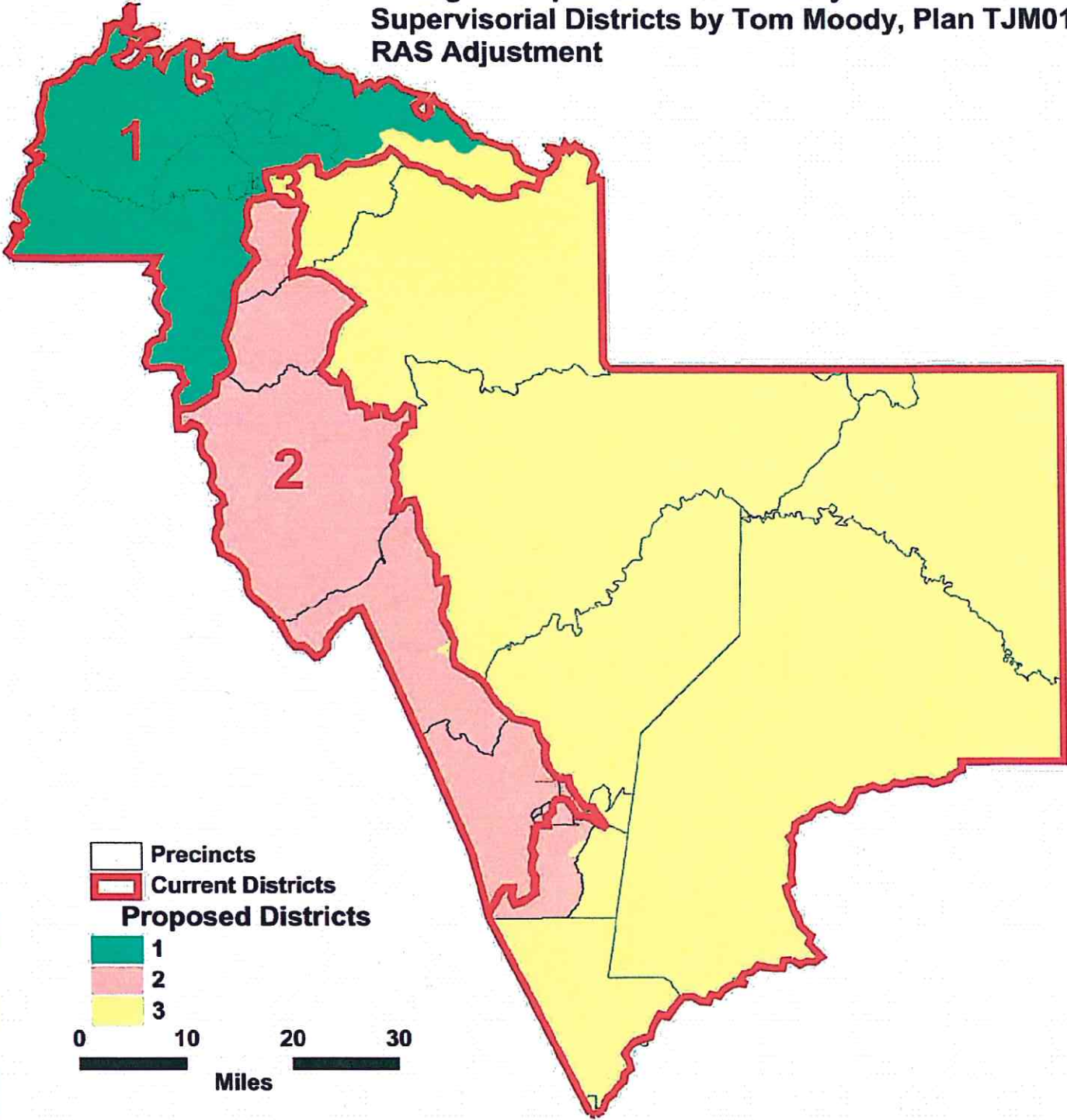


GILA COUNTY SUPERVISORIAL DISTRICTS

PLAN SUBMITTED BY: K Feezor, RAS Adjustment klf sp016

	Current	Proposed Plan	Change
Population, District 1	18,105	17,966	-139
Population, District 2	17,151	17,961	810
Population, District 3	18,341	17,670	-671
Population deviation, District 1	239	100	
Population deviation, District 2	-715	95	
Population deviation, District 3	475	-196	
Percent deviation, District 1	1.34%	0.56%	
Percent deviation, District 2	-4.00%	0.53%	
Percent deviation, District 3	2.66%	-1.10%	
Total plan deviation, number	1,190	296	
Total plan deviation, percent	6.66%	1.66%	
Percent voting-age Hispanic, District 1	6.23%	6.27%	0.04%
Percent voting-age Hispanic, District 2	24.88%	25.76%	0.88%
Percent voting-age Hispanic, District 3	16.45%	14.99%	-1.46%
Percent V-A Non-Hispanic Native American, District 1	1.75%	1.76%	0.01%
Percent V-A Non-Hispanic Native American, District 2	3.63%	3.24%	-0.39%
Percent V-A Non-Hispanic Native American, District 3	32.77%	34.09%	1.32%
Percent V-A Non-Hispanic Black, District 1	0.31%	0.31%	0.00%
Percent V-A Non-Hispanic Black, District 2	0.46%	0.54%	0.08%
Percent V-A Non-Hispanic Black, District 3	0.46%	0.37%	-0.09%
Percent voting-age total minority residents, District 1	9.13%	9.19%	0.06%
Percent voting-age total minority residents, District 2	30.16%	30.48%	0.32%
Percent voting-age total minority residents, District 3	50.28%	50.30%	0.02%

**Changes Proposed to Gila County
Supervisory Districts by Tom Moody, Plan TJM01
RAS Adjustment**



Pine-Strawberry

Plan TJM01, Payson Area

Payson #5

Payson #8

Star Valley

Payson #4

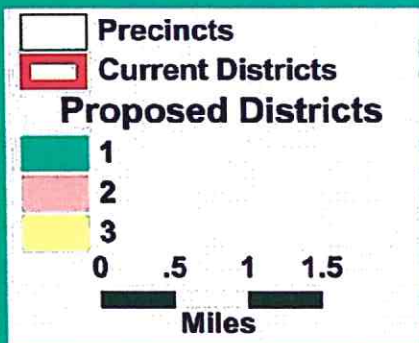
3

Payson #3

Payson #6

Payson #1

Payson #2



Plan TJM01, Globe Area

Globe #1

Claypool #2

Central Heights

East Globe

Globe #2

Claypool #1

Globe #8

Globe #3

Globe #4

Globe #5

Globe #6

Globe #11

Precincts

Current Districts

Proposed Districts

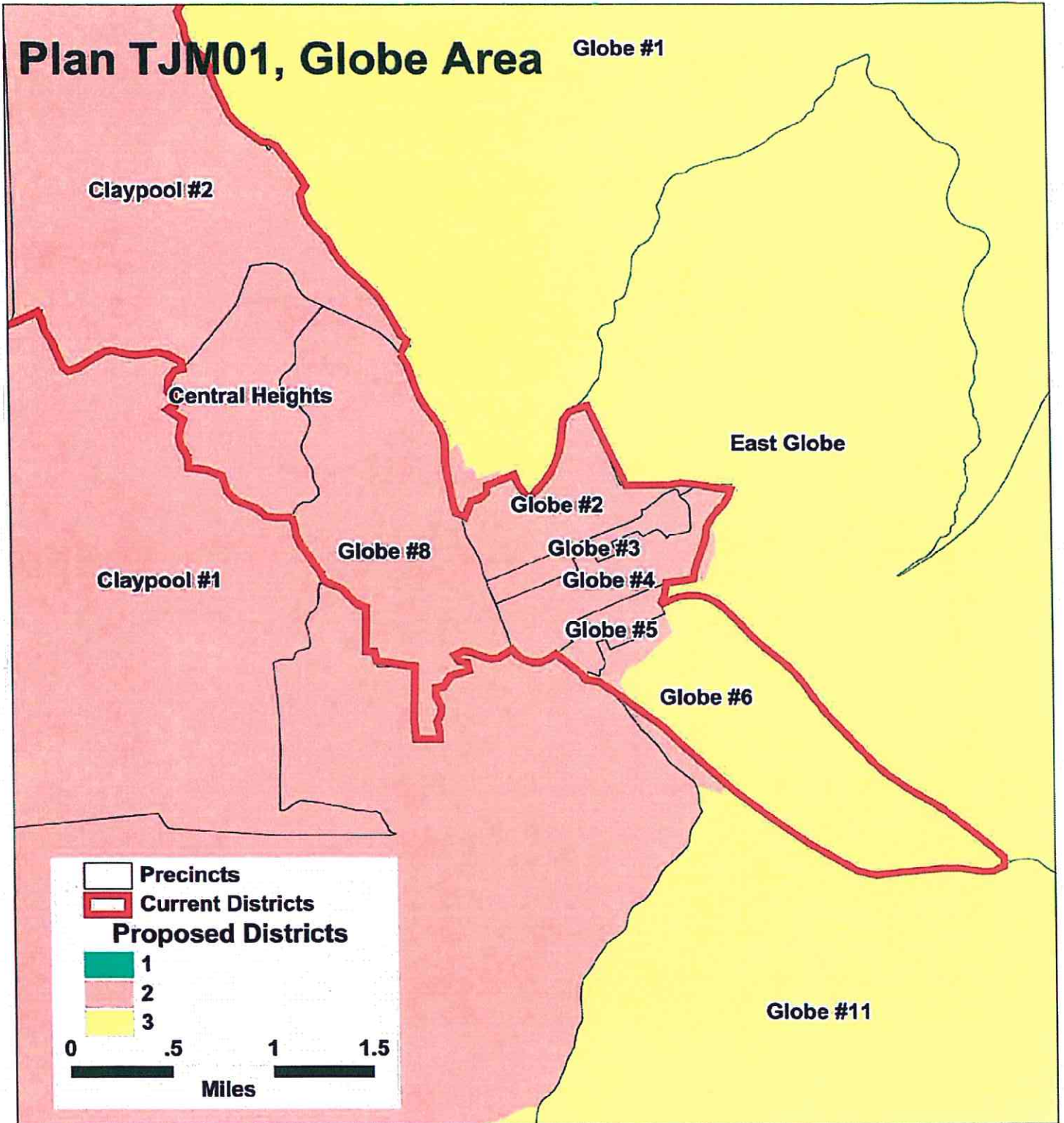
1

2

3

0 .5 1 1.5

Miles



**GILA COUNTY SUPERVISORIAL DISTRICTS
TOTAL POPULATION BY RACE AND HISPANIC ORIGIN
PLAN SUBMITTED BY: Tom Moody, RAS Adjustment TJM01**

<u>Number:</u>	<u>District 1</u>	<u>District 2</u>	<u>District 3</u>	<u>Total, All Districts</u>
Hispanic, of any race	1,463	5,178	2,947	9,588
Non-Hispanic White	15,799	11,807	7,692	35,298
Non-Hispanic Black	83	93	72	248
Non-Hispanic American Indian	356	686	6,933	7,975
Non-Hispanic Asian	114	128	79	321
Non-Hispanic Hawaiian	22	11	6	39
Non-Hispanic other race	20	31	15	66
Non-Hispanic two or more races	13	21	28	62
Total Population	17,870	17,955	17,772	53,597

<u>Percent:</u>	<u>District 1</u>	<u>District 2</u>	<u>District 3</u>	<u>Total</u>
Hispanic, of any race	8.19%	28.84%	16.58%	17.89%
Non-Hispanic White	88.41%	65.76%	43.28%	65.86%
Non-Hispanic Black	0.46%	0.52%	0.41%	0.46%
Non-Hispanic American Indian	1.99%	3.82%	39.01%	14.88%
Non-Hispanic Asian	0.64%	0.71%	0.44%	0.60%
Non-Hispanic Hawaiian	0.12%	0.06%	0.03%	0.07%
Non-Hispanic other race	0.11%	0.17%	0.08%	0.12%
Non-Hispanic two or more races	0.07%	0.12%	0.16%	0.12%
Total Percent	100.00%	100.00%	100.00%	100.00%

Ideal Population	17,866	17,866	17,866	Total 17,866
Total Population	17,870	17,955	17,772	deviation: 183
Numeric deviation from Ideal Value	4	89	-94	
Percent deviation from Ideal Value	0.02%	0.50%	-0.52%	1.02%

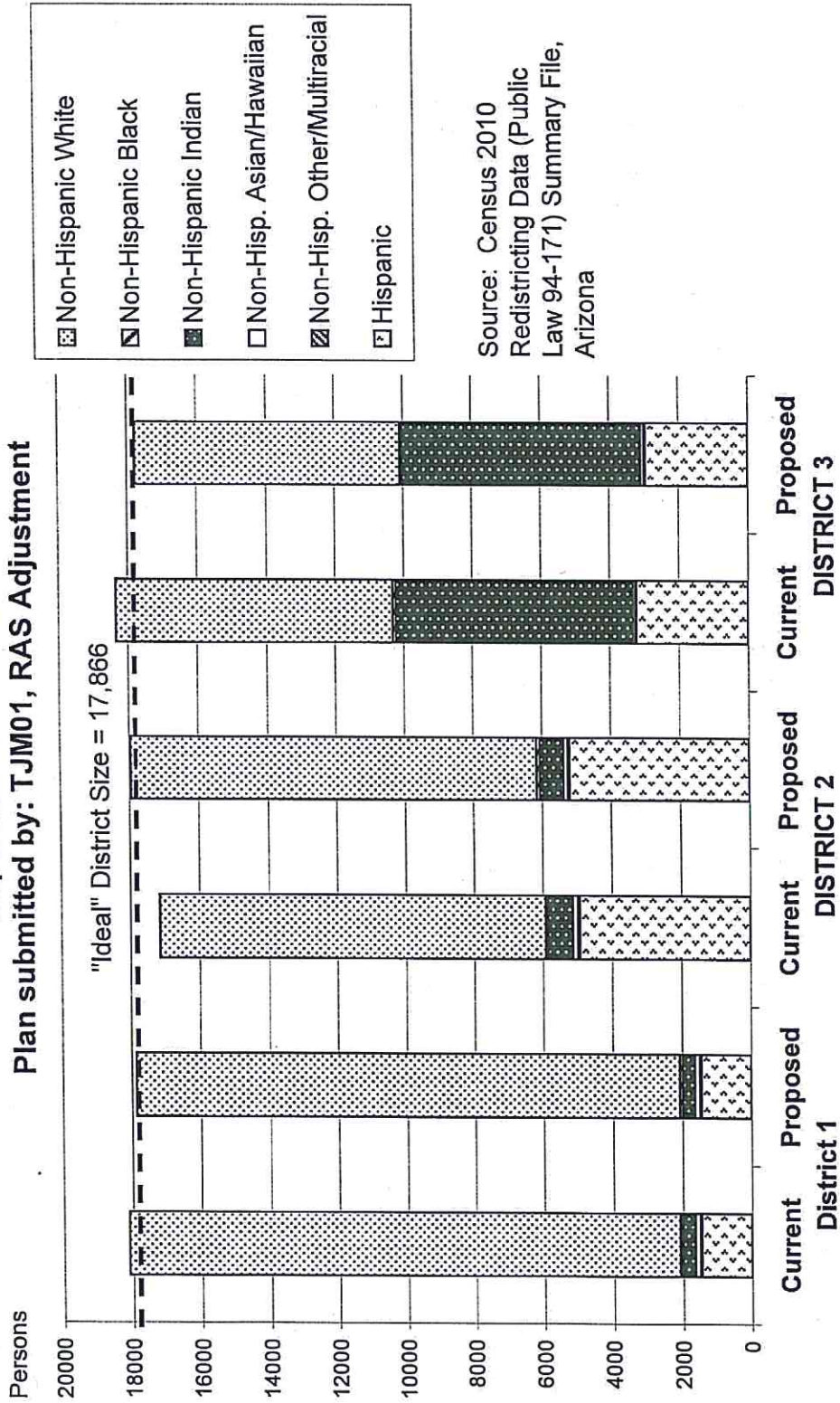
Source: Census 2010 Redistricting Data (Public Law 94-171) Summary file, Arizona
Tabulation: Research Advisory Services, Inc., Phoenix AZ (602) 230-9580

**GILA COUNTY SUPERVISORIAL DISTRICTS
VOTING-AGE POPULATION BY RACE AND HISPANIC ORIGIN
PLAN SUBMITTED BY: Tom Moody, RAS Adjustment TJM01**

<u>Voting-Age Number:</u>	<u>District 1</u>	<u>District 2</u>	<u>District 3</u>	<u>Total, All Districts</u>
Hispanic, of any race	943	3,544	2,032	6,519
Non-Hispanic White	13,601	9,794	6,527	29,922
Non-Hispanic Black	46	69	56	171
Non-Hispanic American Indian	265	463	4,417	5,145
Non-Hispanic Asian	90	98	64	252
Non-Hispanic Hawaiian	17	8	5	30
Non-Hispanic other race	9	23	12	44
Non-Hispanic two or more races	11	15	17	43
Voting-Age Population	14,982	14,014	13,130	42,126
<u>Voting-Age Percent:</u>				
Hispanic, of any race	6.29%	25.29%	15.48%	15.48%
Non-Hispanic White	90.78%	69.89%	49.71%	71.03%
Non-Hispanic Black	0.31%	0.49%	0.43%	0.41%
Non-Hispanic American Indian	1.77%	3.30%	33.64%	12.21%
Non-Hispanic Asian	0.60%	0.70%	0.49%	0.60%
Non-Hispanic Hawaiian	0.11%	0.06%	0.04%	0.07%
Non-Hispanic other race	0.06%	0.16%	0.09%	0.10%
Non-Hispanic two or more races	0.07%	0.11%	0.13%	0.10%
Voting-Age Percent	100.00%	100.00%	100.00%	100.00%

Source: Census 2010 Redistricting Data (Public Law 94-171) Summary file, Arizona
Tabulation: Research Advisory Services, Inc., Phoenix AZ (602) 230-9580

Race and Origin Composition of Current and Proposed Gila County Supervisory Districts Plan submitted by: TJM01, RAS Adjustment



Source: Census 2010
Redistricting Data (Public
Law 94-171) Summary File,
Arizona

GILA COUNTY SUPERVISORIAL DISTRICTS

PLAN SUBMITTED BY: Tom Moody, RAS Adjustment TJM01

	Current	Proposed Plan	Change
Population, District 1	18,105	17,870	-235
Population, District 2	17,151	17,955	804
Population, District 3	18,341	17,772	-569
Population deviation, District 1	239	4	
Population deviation, District 2	-715	89	
Population deviation, District 3	475	-94	
Percent deviation, District 1	1.34%	0.02%	
Percent deviation, District 2	-4.00%	0.50%	
Percent deviation, District 3	2.66%	-0.52%	
Total plan deviation, number	1,190	183	
Total plan deviation, percent	6.66%	1.02%	
Percent voting-age Hispanic, District 1	6.23%	6.29%	0.06%
Percent voting-age Hispanic, District 2	24.88%	25.29%	0.41%
Percent voting-age Hispanic, District 3	16.45%	15.48%	-0.97%
Percent V-A Non-Hispanic Native American, District 1	1.75%	1.77%	0.02%
Percent V-A Non-Hispanic Native American, District 2	3.63%	3.30%	-0.33%
Percent V-A Non-Hispanic Native American, District 3	32.77%	33.64%	0.87%
Percent V-A Non-Hispanic Black, District 1	0.31%	0.31%	0.00%
Percent V-A Non-Hispanic Black, District 2	0.46%	0.49%	0.03%
Percent V-A Non-Hispanic Black, District 3	0.46%	0.43%	-0.03%
Percent voting-age total minority residents, District 1	9.13%	9.22%	0.09%
Percent voting-age total minority residents, District 2	30.16%	30.11%	-0.05%
Percent voting-age total minority residents, District 3	50.28%	50.29%	0.01%