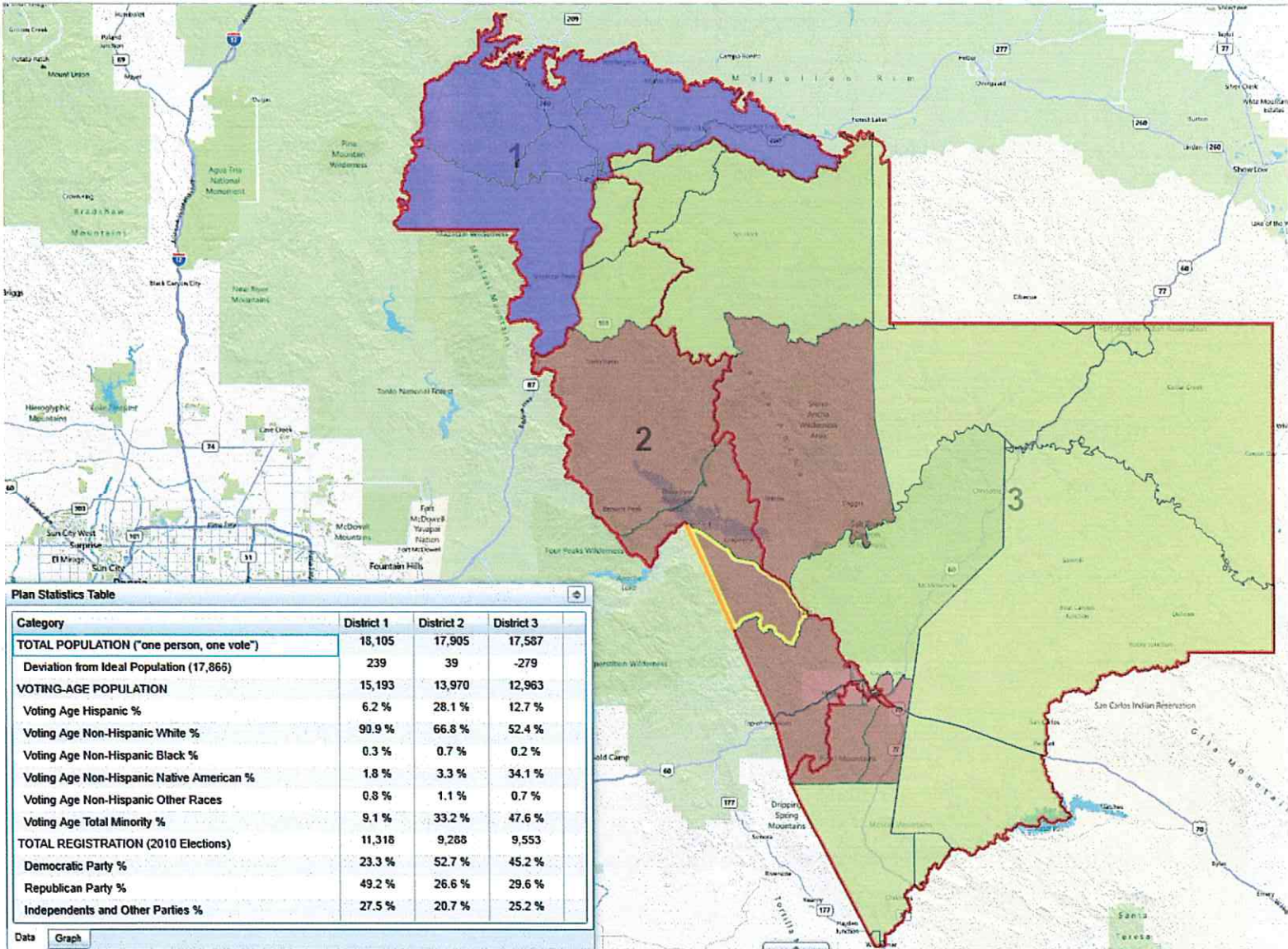
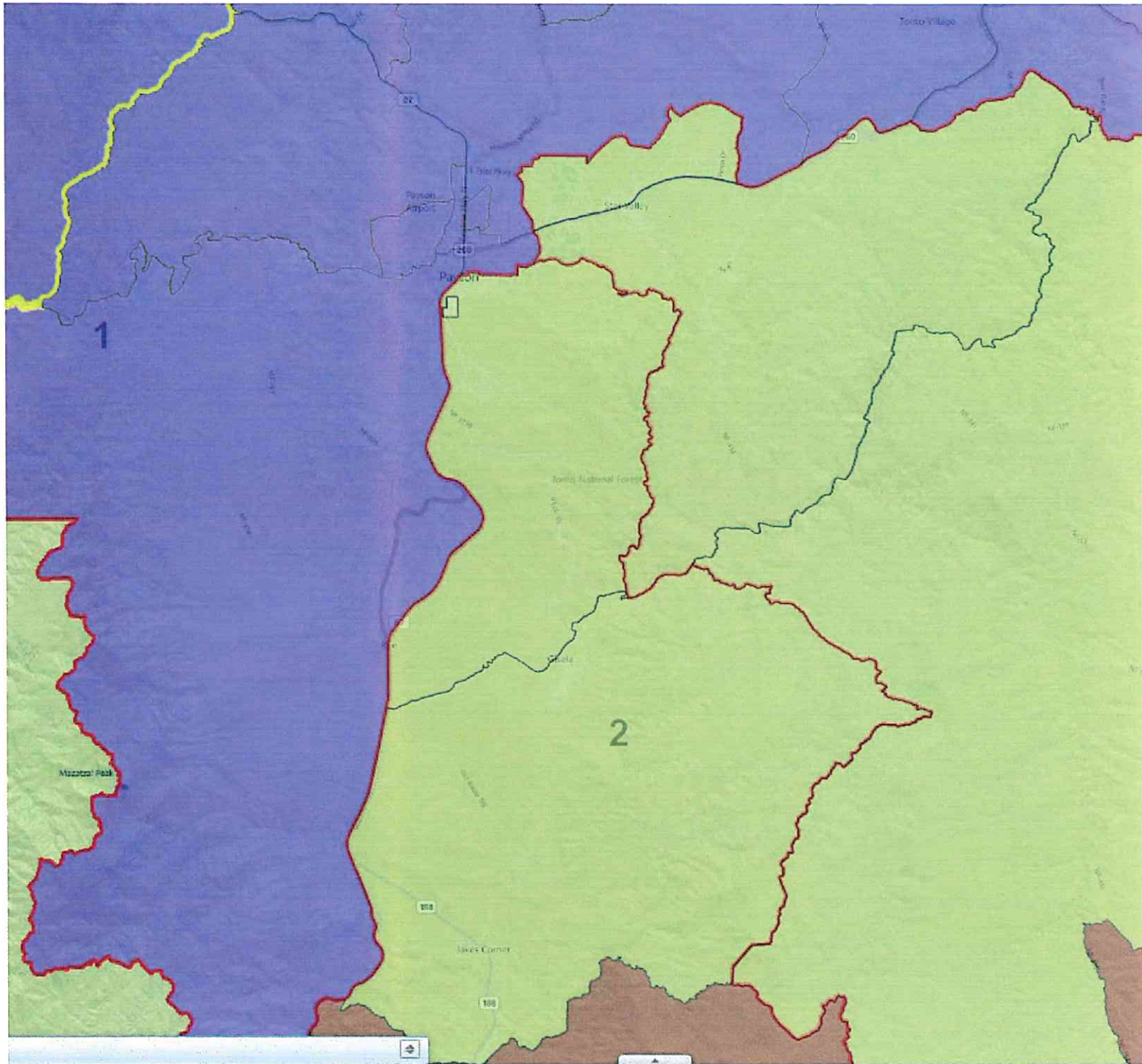
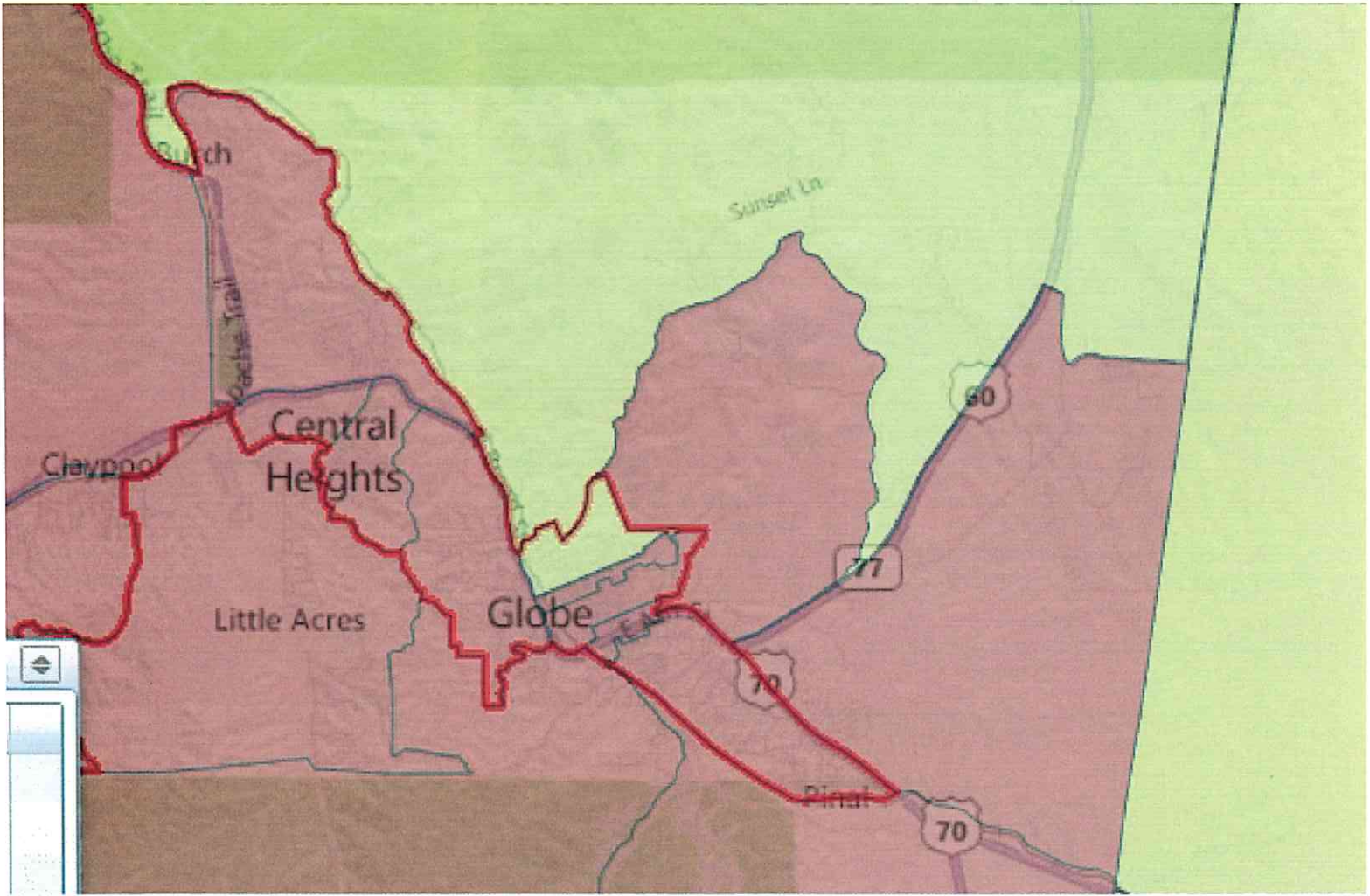


# Combination Plan BB







**GILA COUNTY SUPERVISORIAL DISTRICTS**  
**VOTING-AGE POPULATION BY RACE AND HISPANIC ORIGIN**  
**PLAN BB (revised)**

<b>Voting-Age Number:</b>	<b>District 1</b>	<b>District 2</b>	<b>District 3</b>	<b>Total, All Districts</b>
Hispanic, of any race	947	3,928	1,644	<b>6,519</b>
Non-Hispanic White	13,806	9,328	6,788	<b>29,922</b>
Non-Hispanic Black	47	98	2	<b>171</b>
Non-Hispanic American Indian	266	459	4,420	<b>5,145</b>
Non-Hispanic Asian	90	112	50	<b>252</b>
Non-Hispanic Hawaiian	17	8	5	<b>30</b>
Non-Hispanic other race	9	22	13	<b>44</b>
Non-Hispanic two or more races	11	15	17	<b>43</b>
<b>Voting-Age Population</b>	<b>15,193</b>	<b>13,970</b>	<b>12,963</b>	<b>42,126</b>
<b>Voting-Age Percent:</b>				
Hispanic, of any race	6.23%	28.12%	12.68%	<b>15.48%</b>
Non-Hispanic White	90.87%	66.77%	52.36%	<b>71.03%</b>
Non-Hispanic Black	0.31%	0.70%	0.20%	<b>0.41%</b>
Non-Hispanic American Indian	1.75%	3.29%	34.10%	<b>12.21%</b>
Non-Hispanic Asian	0.59%	0.80%	0.39%	<b>0.60%</b>
Non-Hispanic Hawaiian	0.11%	0.06%	0.04%	<b>0.07%</b>
Non-Hispanic other race	0.06%	0.16%	0.10%	<b>0.10%</b>
Non-Hispanic two or more races	0.07%	0.11%	0.13%	<b>0.10%</b>
<b>Voting-Age Percent</b>	<b>100.00%</b>	<b>100.00%</b>	<b>100.00%</b>	<b>100.00%</b>

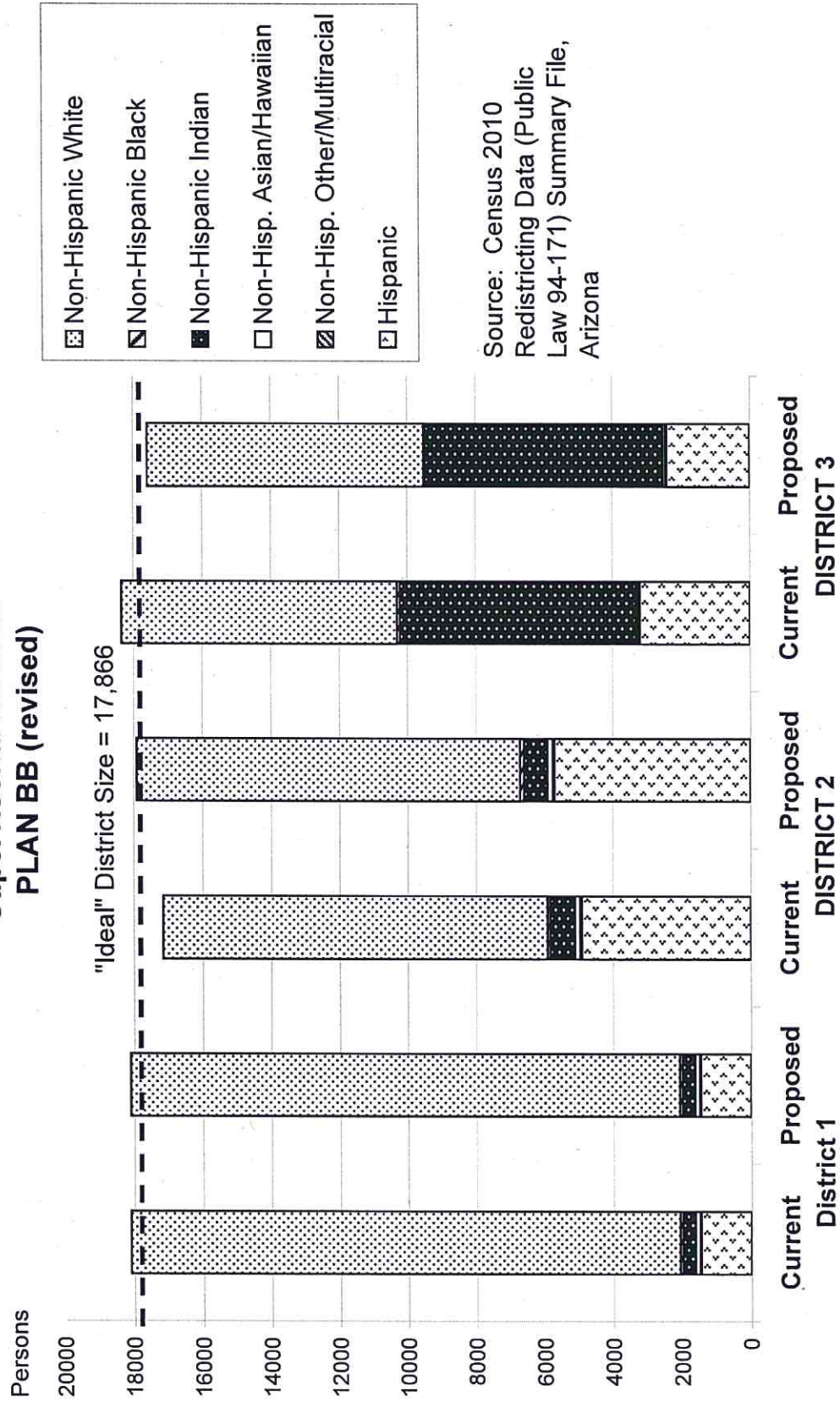
Source: Census 2010 Redistricting Data (Public Law 94-171) Summary file, Arizona  
 Tabulation: Research Advisory Services, Inc., Phoenix AZ (602) 230-9580

**GILA COUNTY SUPERVISORIAL DISTRICTS**  
**TOTAL POPULATION BY RACE AND HISPANIC ORIGIN**  
**PLAN BB (revised)**

<u>Number:</u>	<u>District 1</u>	<u>District 2</u>	<u>District 3</u>	<u>Total, All Districts</u>
Hispanic, of any race	1,467	5,711	2,410	9,588
Non-Hispanic White	16,025	11,190	8,083	35,298
Non-Hispanic Black	87	123	38	248
Non-Hispanic American Indian	357	677	6,941	7,975
Non-Hispanic Asian	114	142	65	321
Non-Hispanic Hawaiian	22	11	6	39
Non-Hispanic other race	20	29	17	66
Non-Hispanic two or more races	13	22	27	62
<b>Total Population</b>	<b>18,105</b>	<b>17,905</b>	<b>17,587</b>	<b>53,597</b>
<u>Percent:</u>				
Hispanic, of any race	8.10%	31.90%	13.70%	17.89%
Non-Hispanic White	88.51%	62.50%	45.96%	65.86%
Non-Hispanic Black	0.48%	0.69%	0.22%	0.46%
Non-Hispanic American Indian	1.97%	3.78%	39.47%	14.88%
Non-Hispanic Asian	0.63%	0.79%	0.37%	0.60%
Non-Hispanic Hawaiian	0.12%	0.06%	0.03%	0.07%
Non-Hispanic other race	0.11%	0.16%	0.10%	0.12%
Non-Hispanic two or more races	0.07%	0.12%	0.15%	0.12%
<b>Total Percent</b>	<b>100.00%</b>	<b>100.00%</b>	<b>100.00%</b>	<b>100.00%</b>
Ideal Population	17,866	17,866	17,866	<b>Total</b>
Total Population	18,105	17,905	17,587	<b>deviation:</b>
Numeric deviation from Ideal Value	239	39	-279	<b>518</b>
Percent deviation from Ideal Value	1.34%	0.22%	-1.56%	<b>2.90%</b>

Source: Census 2010 Redistricting Data (Public Law 94-171) Summary file, Arizona  
 Tabulation: Research Advisory Services, Inc., Phoenix AZ (602) 230-9580

# Race and Origin Composition of Current and Proposed Gila County Supervisory Districts PLAN BB (revised)



**GILA COUNTY SUPERVISORIAL DISTRICTS  
PLAN BB (revised)**

	Current	Proposed Plan	Change
Population, District 1	18,105	18,105	0
Population, District 2	17,151	17,905	754
Population, District 3	18,341	17,587	-754
Population deviation, District 1	239	239	
Population deviation, District 2	-715	39	
Population deviation, District 3	475	-279	
Percent deviation, District 1	1.34%	1.34%	
Percent deviation, District 2	-4.00%	0.22%	
Percent deviation, District 3	2.66%	-1.56%	
Total plan deviation, number	1,190	518	
Total plan deviation, percent	6.66%	2.90%	
Percent voting-age Hispanic, District 1	6.23%	6.23%	0.00%
Percent voting-age Hispanic, District 2	24.88%	28.12%	3.24%
Percent voting-age Hispanic, District 3	16.45%	12.68%	-3.77%
Percent V-A Non-Hispanic Native American, District 1	1.75%	1.75%	0.00%
Percent V-A Non-Hispanic Native American, District 2	3.63%	3.29%	-0.34%
Percent V-A Non-Hispanic Native American, District 3	32.77%	34.10%	1.33%
Percent V-A Non-Hispanic Black, District 1	0.31%	0.31%	0.00%
Percent V-A Non-Hispanic Black, District 2	0.46%	0.70%	0.24%
Percent V-A Non-Hispanic Black, District 3	0.46%	0.20%	-0.26%
Percent voting-age total minority residents, District 1	9.13%	9.13%	0.00%
Percent voting-age total minority residents, District 2	30.16%	33.23%	3.07%
Percent voting-age total minority residents, District 3	50.28%	47.64%	-2.64%

Combo Plan-BE

Map Name  
TAT-TM2

Map

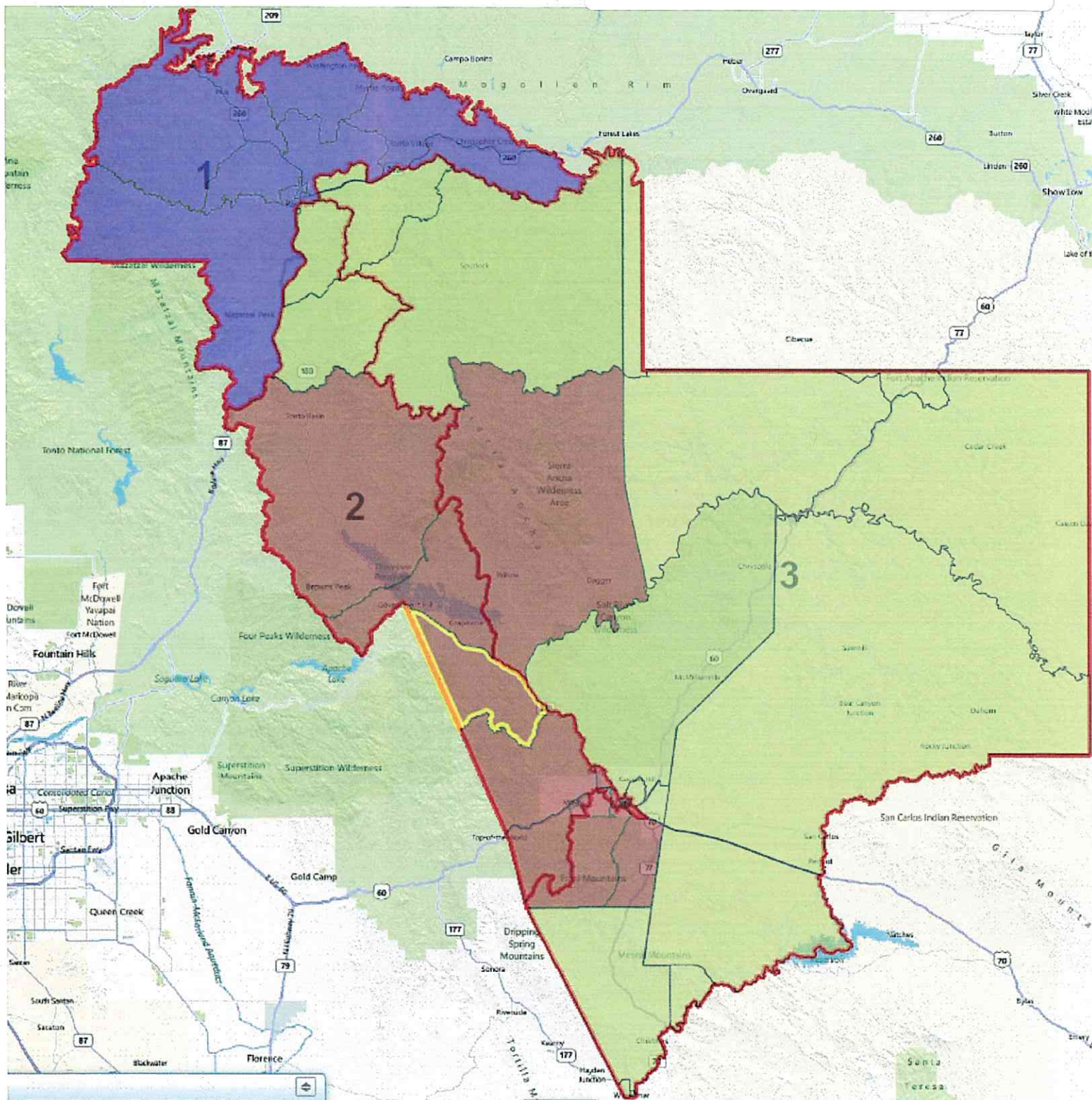
Data	SUDIS -			Grand Total	% distribution		
	1	2	3		1	2	3
Sum of TOTPOP	18105	17905	17587	53597	33.8%	33.4%	32.8%
Sum of HISP	1467	5711	2410	9588	15.3%	59.6%	25.1%
Sum of WHITE	16025	11190	8083	35298	45.4%	31.7%	22.9%
Sum of BLACK	87	123	38	248	35.1%	49.6%	15.3%
Sum of INDIAN	357	677	6941	7975	4.5%	8.5%	87.0%
Sum of OTHER	169	204	115	488	34.6%	41.8%	23.6%
Sum of VOTEAGE	15193	13970	12963	42126	36.1%	33.2%	30.8%
Sum of VOTEHISP	947	3928	1644	6519	14.5%	60.3%	25.2%
Sum of VOTEWHITE	13806	9328	6788	29922	46.1%	31.2%	22.7%
Sum of VOTEBLACK	47	98	26	171	27.5%	57.3%	15.2%
Sum of VOTEINDIAN	266	459	4420	5145	5.2%	8.9%	85.9%
Sum of VOTEOTHER	127	157	85	369	34.4%	42.5%	23.0%
Sum of TREGVOTER	11318	9288	9553	30159	37.5%	30.8%	31.7%
Sum of TDEMVote	2640	4892	4316	11848	22.3%	41.3%	36.4%
Sum of TREPVote	5571	2473	2832	10876	51.2%	22.7%	26.0%
Sum of TINDVote	3107	1923	2405	7435	41.8%	25.9%	32.3%
Change	0	429	-429	0	0.0%	2.4%	-2.4%
Deviation from Ideal (17,866)	239	39	-279	518			
% Deviation from Ideal	1.3%	0.2%	-1.6%	2.9%			

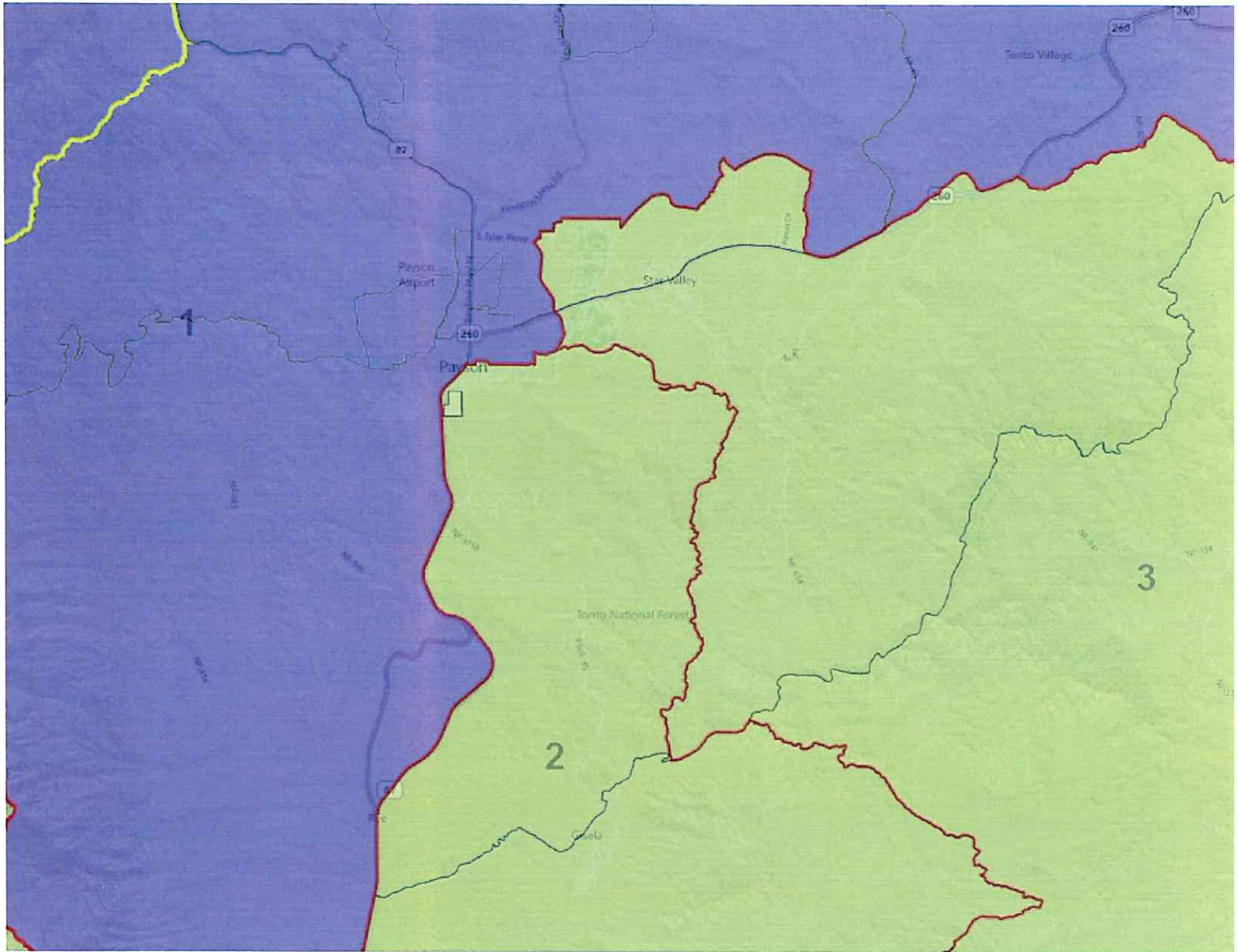
Recalculate

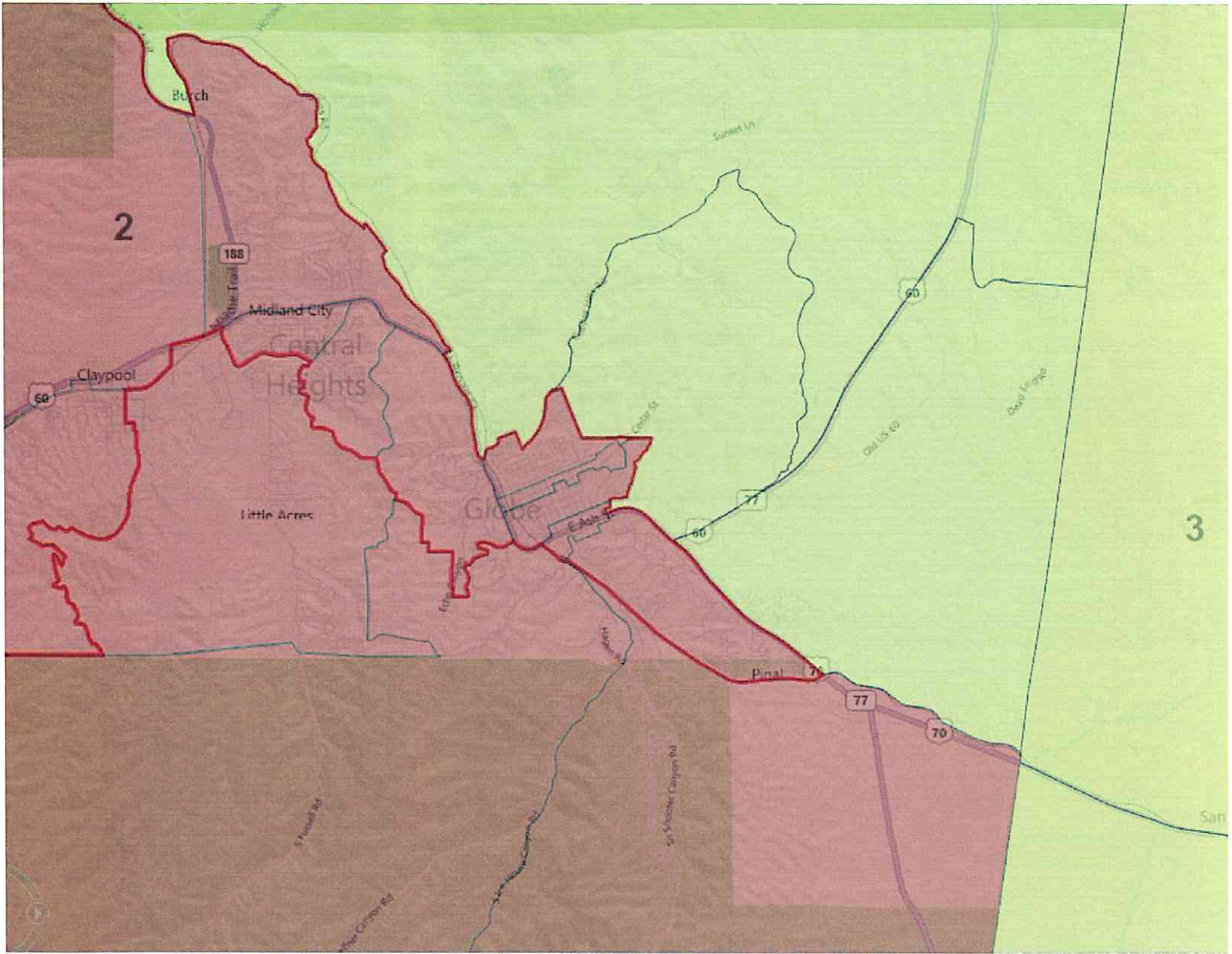
Data	% of total			Overall
	1	2	3	
Hispanic All	8.1%	31.9%	13.7%	17.9%
White All	88.5%	62.5%	46.0%	65.9%
Black All	0.5%	0.7%	0.2%	0.5%
Indian All	2.0%	3.8%	39.5%	14.9%
Other All	0.9%	1.1%	0.7%	0.9%
Total Minority All	11.5%	37.5%	54.0%	34.1%
Total Minority All Change	0.0%	3.0%	-2.1%	
Hispanic Voter	6.2%	28.1%	12.7%	15.5%
Hispanic Voter Change	0.0%	3.2%	-3.8%	
White Voter	90.9%	66.8%	52.4%	71.0%
Black Voter	0.3%	0.7%	0.2%	0.4%
Indian Voter	1.8%	3.3%	34.1%	12.2%
Indian Voter Change	0.0%	-0.3%	1.3%	
Other Voter	0.8%	1.1%	0.7%	0.9%
Total Minority Voter	9.1%	32.9%	49.0%	29.0%
Minority Change	0.00%	2.73%	-1.31%	
Total Hispanic/Indian Voter	8.0%	31.4%	46.8%	27.7%
Hispanic/Indian Change	0.0%	2.9%	-2.4%	
Registered Voter/TOTPOP	62.5%	51.9%	54.3%	56.3%
Registered Voter/Voting Age	74.5%	66.5%	73.7%	71.6%
Democrat	23.3%	52.7%	45.2%	39.3%
Republican	49.2%	26.6%	29.6%	36.1%



# Combination Plan CC







**GILA COUNTY SUPERVISORIAL DISTRICTS  
TOTAL POPULATION BY RACE AND HISPANIC ORIGIN  
PLAN CC**

<u>Number:</u>	<u>District 1</u>	<u>District 2</u>	<u>District 3</u>	<u>Total, All Districts</u>
Hispanic, of any race	1,467	5,604	2,517	9,588
Non-Hispanic White	16,025	10,828	8,445	35,298
Non-Hispanic Black	87	100	61	248
Non-Hispanic American Indian	357	685	6,933	7,975
Non-Hispanic Asian	114	134	73	321
Non-Hispanic Hawaiian	22	11	6	39
Non-Hispanic other race	20	27	19	66
Non-Hispanic two or more races	13	22	27	62
<b>Total Population</b>	<b>18,105</b>	<b>17,411</b>	<b>18,081</b>	<b>53,597</b>
<u>Percent:</u>				
Hispanic, of any race	8.10%	32.19%	13.92%	17.89%
Non-Hispanic White	88.51%	62.19%	46.71%	65.86%
Non-Hispanic Black	0.48%	0.57%	0.34%	0.46%
Non-Hispanic American Indian	1.97%	3.93%	38.34%	14.88%
Non-Hispanic Asian	0.63%	0.77%	0.40%	0.60%
Non-Hispanic Hawaiian	0.12%	0.06%	0.03%	0.07%
Non-Hispanic other race	0.11%	0.16%	0.11%	0.12%
Non-Hispanic two or more races	0.07%	0.13%	0.15%	0.12%
<b>Total Percent</b>	<b>100.00%</b>	<b>100.00%</b>	<b>100.00%</b>	<b>100.00%</b>
Ideal Population	17,866	17,866	17,866	<b>Total</b>
Total Population	18,105	17,411	18,081	<b>deviation:</b>
Numeric deviation from Ideal Value	239	-455	215	<b>694</b>
Percent deviation from Ideal Value	1.34%	-2.54%	1.21%	<b>3.88%</b>

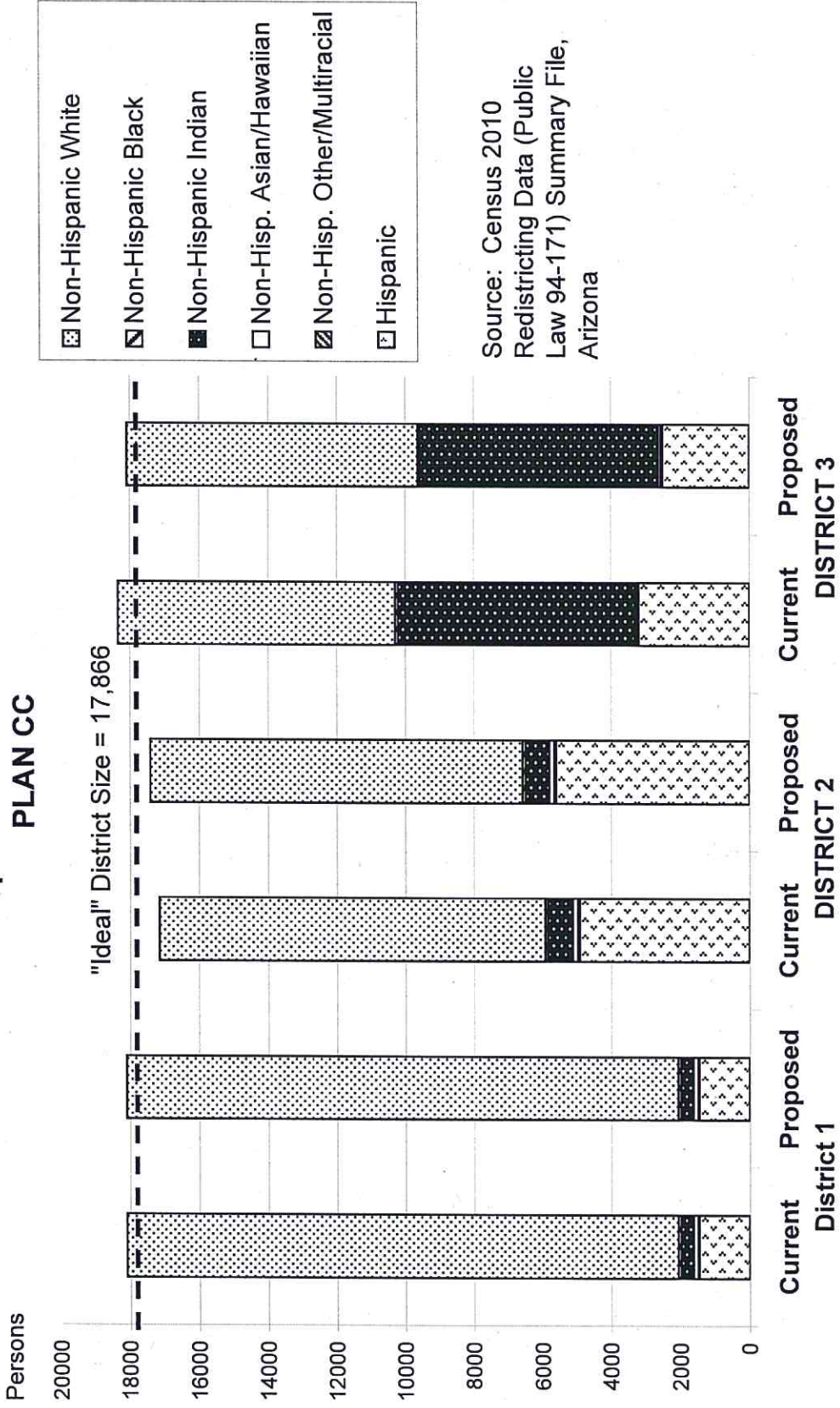
Source: Census 2010 Redistricting Data (Public Law 94-171) Summary file, Arizona  
 Tabulation: Research Advisory Services, Inc., Phoenix AZ (602) 230-9580

**GILA COUNTY SUPERVISORIAL DISTRICTS  
VOTING-AGE POPULATION BY RACE AND HISPANIC ORIGIN  
PLAN CC**

<u>Voting-Age Number:</u>	<u>District 1</u>	<u>District 2</u>	<u>District 3</u>	<u>Total, All Districts</u>
Hispanic, of any race	947	3,846	1,726	<b>6,519</b>
Non-Hispanic White	13,806	9,028	7,088	<b>29,922</b>
Non-Hispanic Black	47	74	50	<b>171</b>
Non-Hispanic American Indian	266	460	4,419	<b>5,145</b>
Non-Hispanic Asian	90	105	57	<b>252</b>
Non-Hispanic Hawaiian	17	8	5	<b>30</b>
Non-Hispanic other race	9	19	16	<b>44</b>
Non-Hispanic two or more races	11	15	17	<b>43</b>
<b><i>Voting-Age Population</i></b>	<b>15,193</b>	<b>13,555</b>	<b>13,378</b>	<b>42,126</b>
<u>Voting-Age Percent:</u>				
Hispanic, of any race	6.23%	28.37%	12.90%	<b>15.48%</b>
Non-Hispanic White	90.87%	66.60%	52.98%	<b>71.03%</b>
Non-Hispanic Black	0.31%	0.55%	0.37%	<b>0.41%</b>
Non-Hispanic American Indian	1.75%	3.39%	33.03%	<b>12.21%</b>
Non-Hispanic Asian	0.59%	0.77%	0.43%	<b>0.60%</b>
Non-Hispanic Hawaiian	0.11%	0.06%	0.04%	<b>0.07%</b>
Non-Hispanic other race	0.06%	0.14%	0.12%	<b>0.10%</b>
Non-Hispanic two or more races	0.07%	0.11%	0.13%	<b>0.10%</b>
<b><i>Voting-Age Percent</i></b>	<b>100.00%</b>	<b>100.00%</b>	<b>100.00%</b>	<b>100.00%</b>

Source: Census 2010 Redistricting Data (Public Law 94-171) Summary file, Arizona  
 Tabulation: Research Advisory Services, Inc., Phoenix AZ (602) 230-9580

# Race and Origin Composition of Current and Proposed Gila County Supervisory Districts PLAN CC



**GILA COUNTY SUPERVISORIAL DISTRICTS  
PLAN CC**

	<b>Current</b>	<b>Proposed Plan</b>	<b>Change</b>
Population, District 1	18,105	18,105	0
Population, District 2	17,151	17,411	260
Population, District 3	18,341	18,081	-260
Population deviation, District 1	239	239	
Population deviation, District 2	-715	-455	
Population deviation, District 3	475	215	
Percent deviation, District 1	1.34%	1.34%	
Percent deviation, District 2	-4.00%	-2.54%	
Percent deviation, District 3	2.66%	1.21%	
Total plan deviation, number	1,190	694	
Total plan deviation, percent	6.66%	3.88%	
Percent voting-age Hispanic, District 1	6.23%	6.23%	0.00%
Percent voting-age Hispanic, District 2	24.88%	28.37%	3.49%
Percent voting-age Hispanic, District 3	16.45%	12.90%	-3.55%
Percent V-A Non-Hispanic Native American, District 1	1.75%	1.75%	0.00%
Percent V-A Non-Hispanic Native American, District 2	3.63%	3.39%	-0.24%
Percent V-A Non-Hispanic Native American, District 3	32.77%	33.03%	0.26%
Percent V-A Non-Hispanic Black, District 1	0.31%	0.31%	0.00%
Percent V-A Non-Hispanic Black, District 2	0.46%	0.55%	0.09%
Percent V-A Non-Hispanic Black, District 3	0.46%	0.37%	-0.09%
Percent voting-age total minority residents, District 1	9.13%	9.13%	0.00%
Percent voting-age total minority residents, District 2	30.16%	33.40%	3.24%
Percent voting-age total minority residents, District 3	50.28%	47.02%	-3.26%

		<b>Map Name</b>					
		<b>TAT-LE2</b>			map		
	<b>SUDIS -</b>				<b>% distribution</b>		
<b>Data</b>	<b>1</b>	<b>2</b>	<b>3</b>	<b>Grand Total</b>	<b>1</b>	<b>2</b>	<b>3</b>
Sum of TOTPOP	18105	17411	18081	53597	33.8%	32.5%	33.7%
Sum of HISP	1467	5604	2517	9588	15.3%	58.4%	26.3%
Sum of WHITE	16025	10828	8445	35298	45.4%	30.7%	23.9%
Sum of BLACK	87	100	61	248	35.1%	40.3%	24.6%
Sum of INDIAN	357	685	6933	7975	4.5%	8.6%	86.9%
Sum of OTHER	169	194	125	488	34.6%	39.8%	25.6%
Sum of VOTEAGE	15193	13555	13378	42126	36.1%	32.2%	31.8%
Sum of VOTEHISP	947	3846	1726	6519	14.5%	59.0%	26.5%
Sum of VOTEWHITE	13806	9028	7088	29922	46.1%	30.2%	23.7%
Sum of VOTEBLACK	47	74	50	171	27.5%	43.3%	29.2%
Sum of VOTEINDIAN	266	460	4419	5145	5.2%	8.9%	85.9%
Sum of VOTEOTHER	127	147	95	369	34.4%	39.8%	25.7%
Sum of TREGVOTER	11318	9121	9720	30159	37.5%	30.2%	32.2%
Sum of TDEM VOTE	2640	4867	4341	11848	22.3%	41.1%	36.6%
Sum of TREP VOTE	5571	2362	2943	10876	51.2%	21.7%	27.1%
Sum of TIND VOTE	3107	1892	2436	7435	41.8%	25.4%	32.8%
Change	0	14	-14	0	0.0%	0.1%	-0.1%
Deviation from Ideal (17,866)	239	-455	215	694			
% Deviation from Ideal	1.3%	-2.5%	1.2%	3.9%			
					Recalculate		
<b>Data</b>	<b>% of total</b>						
	<b>1</b>	<b>2</b>	<b>3</b>	<b>Overall</b>			
Hispanic All	8.1%	32.2%	13.9%	17.9%			
White All	88.5%	62.2%	46.7%	65.9%			
Black All	0.5%	0.6%	0.3%	0.5%			
Indian All	2.0%	3.9%	38.3%	14.9%			
Other All	0.9%	1.1%	0.7%	0.9%			
Total Minority All	11.5%	37.8%	53.3%	34.1%			
Total Minority All Change	0.0%	3.3%	-2.9%				
Hispanic Voter	6.2%	28.4%	12.9%	15.5%			
Hispanic Voter Change	0.0%	3.5%	-3.5%				
White Voter	90.9%	66.6%	53.0%	71.0%			
Black Voter	0.3%	0.5%	0.4%	0.4%			
Indian Voter	1.8%	3.4%	33.0%	12.2%			
Indian Voter Change	0.0%	-0.2%	0.3%				
Other Voter	0.8%	1.1%	0.7%	0.9%			
Total Minority Voter	9.1%	33.2%	47.3%	29.0%			
Minority Change	0.00%	3.00%	-2.99%				
Total Hispanic/Indian Voter	8.0%	31.8%	45.9%	27.7%			
Hispl/Indian Change	0.0%	3.3%	-3.3%				
Registered Voter/TOTPOP	62.5%	52.4%	53.8%	56.3%			
Registered Voter/Voting Age	74.5%	67.3%	72.7%	71.6%			
Democrat	23.3%	53.4%	44.7%	39.3%			
Republican	49.2%	25.9%	30.3%	36.1%			