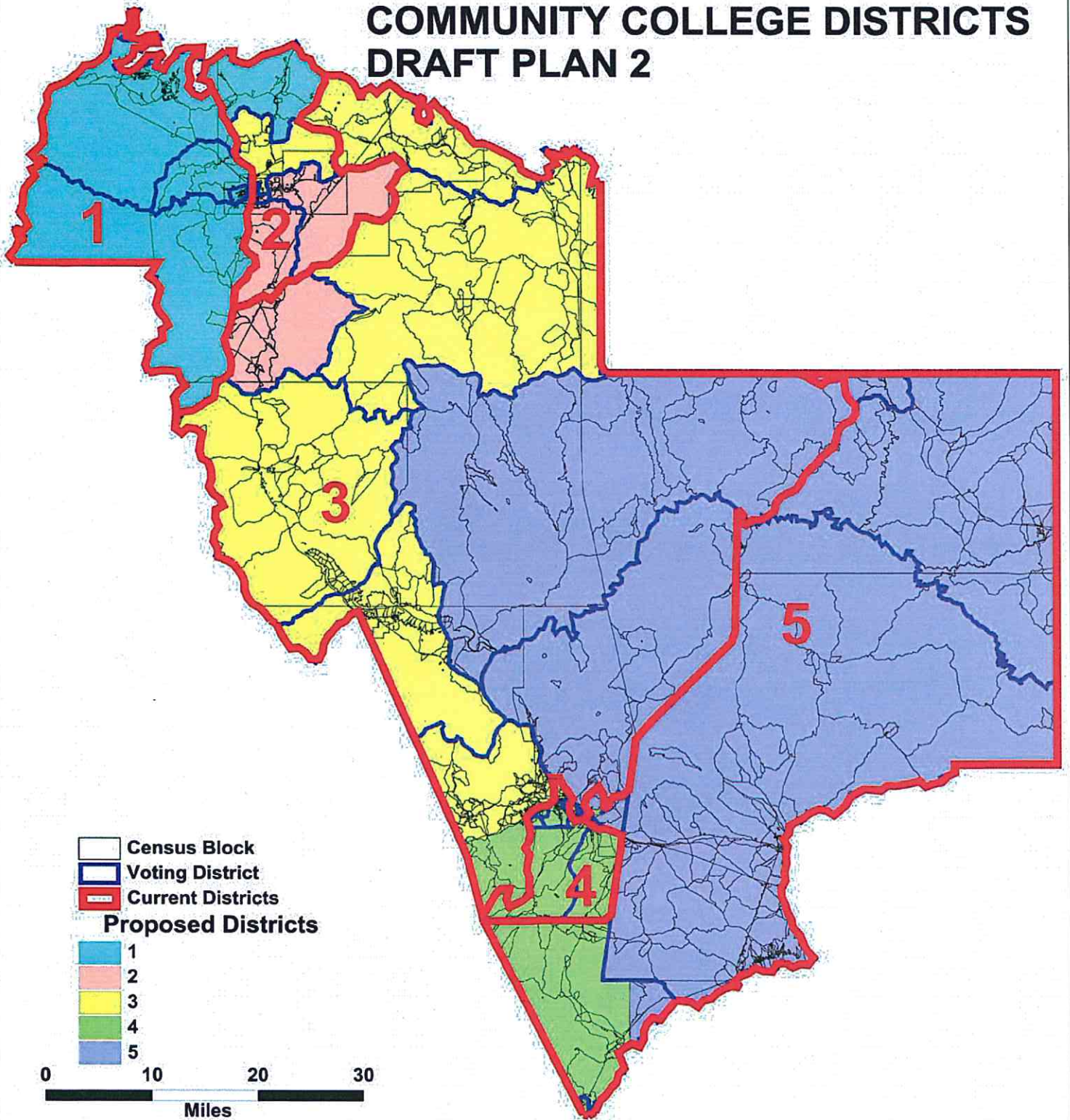
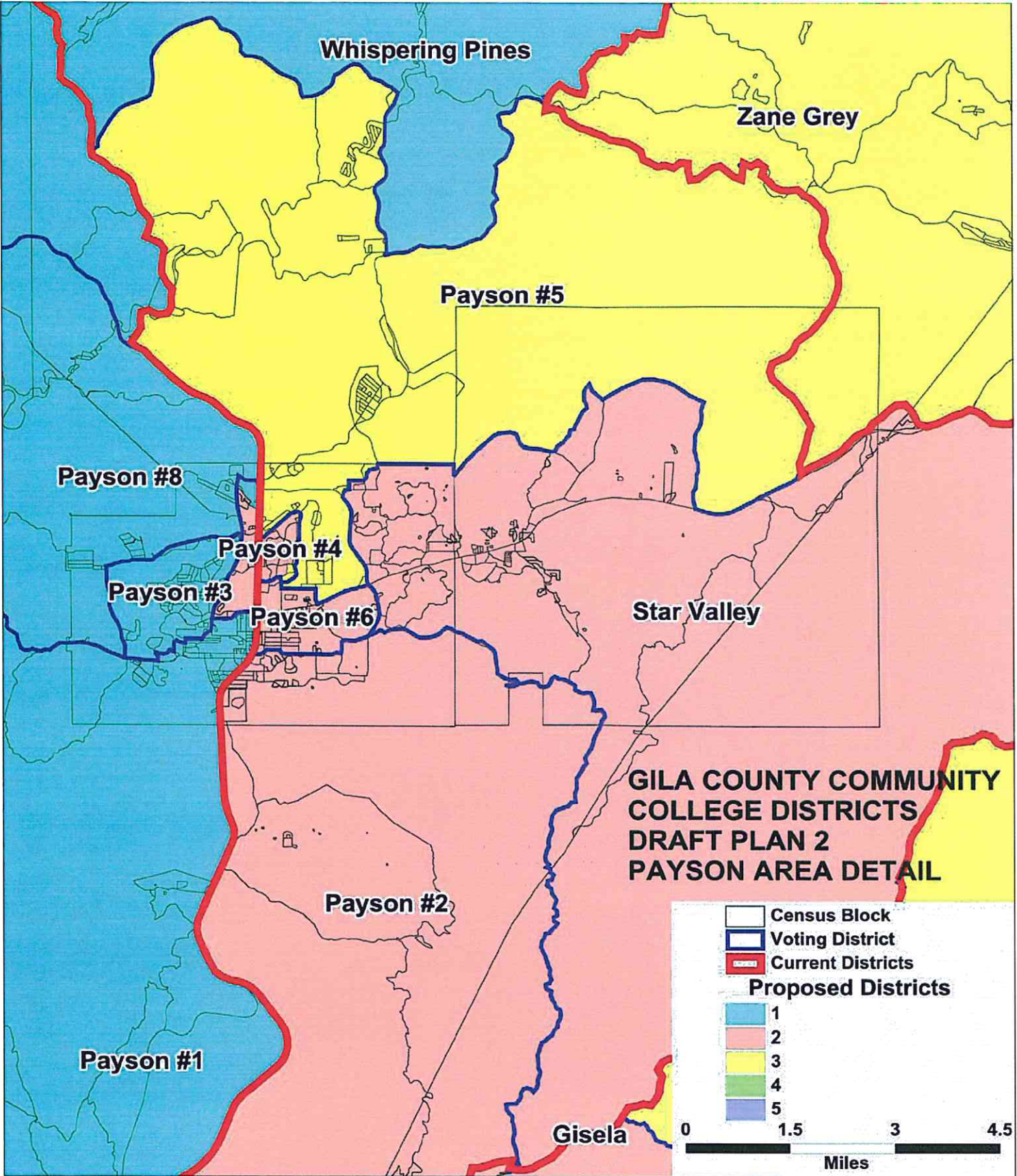
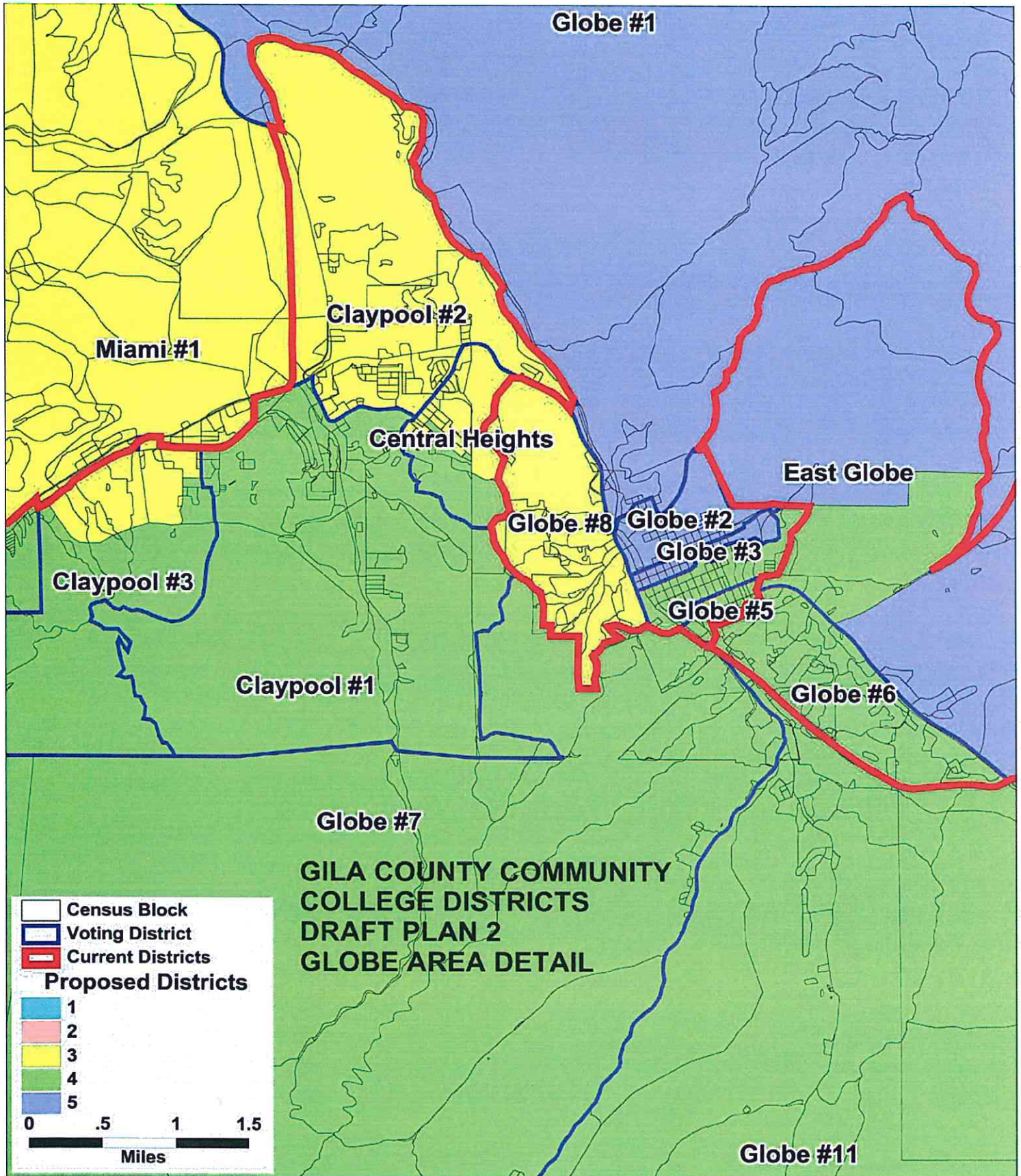


GILA COUNTY COMMUNITY COLLEGE DISTRICTS DRAFT PLAN 2







**GILA COUNTY COMMUNITY COLLEGE DISTRICTS
TOTAL POPULATION BY RACE AND HISPANIC ORIGIN
DRAFT PLAN 2**

<u>Number:</u>	<u>District 1</u>	<u>District 2</u>	<u>District 3</u>	<u>District 4</u>	<u>District 5</u>	<u>Total, All Districts</u>
Hispanic, of any race	841	979	2,518	3,986	1,264	9,588
Non-Hispanic White	9,446	9,354	8,236	5,765	2,497	35,298
Non-Hispanic Black	47	44	63	51	43	248
Non-Hispanic American Indian	229	317	235	455	6,739	7,975
Non-Hispanic Asian	67	79	68	79	28	321
Non-Hispanic Hawaiian	16	9	11	3	0	39
Non-Hispanic other race	12	18	14	15	7	66
Non-Hispanic two or more races	7	12	13	14	16	62
Total Population	10,665	10,812	11,158	10,368	10,594	53,597
<u>Percent:</u>						
Hispanic, of any race	7.89%	9.05%	22.57%	38.45%	11.93%	17.89%
Non-Hispanic White	88.57%	86.51%	73.81%	55.60%	23.57%	65.86%
Non-Hispanic Black	0.44%	0.41%	0.56%	0.49%	0.41%	0.46%
Non-Hispanic American Indian	2.15%	2.93%	2.11%	4.39%	63.61%	14.88%
Non-Hispanic Asian	0.63%	0.73%	0.61%	0.76%	0.26%	0.60%
Non-Hispanic Hawaiian	0.15%	0.08%	0.10%	0.03%	0.00%	0.07%
Non-Hispanic other race	0.11%	0.17%	0.13%	0.14%	0.07%	0.12%
Non-Hispanic two or more races	0.07%	0.11%	0.12%	0.14%	0.15%	0.12%
Total Percent	100.00%	100.00%	100.00%	100.00%	100.00%	100.00%
Ideal Population	10,719	10,719	10,719	10,719	10,719	Total 10,719
Total Population	10,665	10,812	11,158	10,368	10,594	deviation: 790
Numeric deviation from Ideal Value	-54	93	439	-351	-125	-125
Percent deviation from Ideal Value	-0.51%	0.86%	4.09%	-3.28%	-1.17%	-1.17%

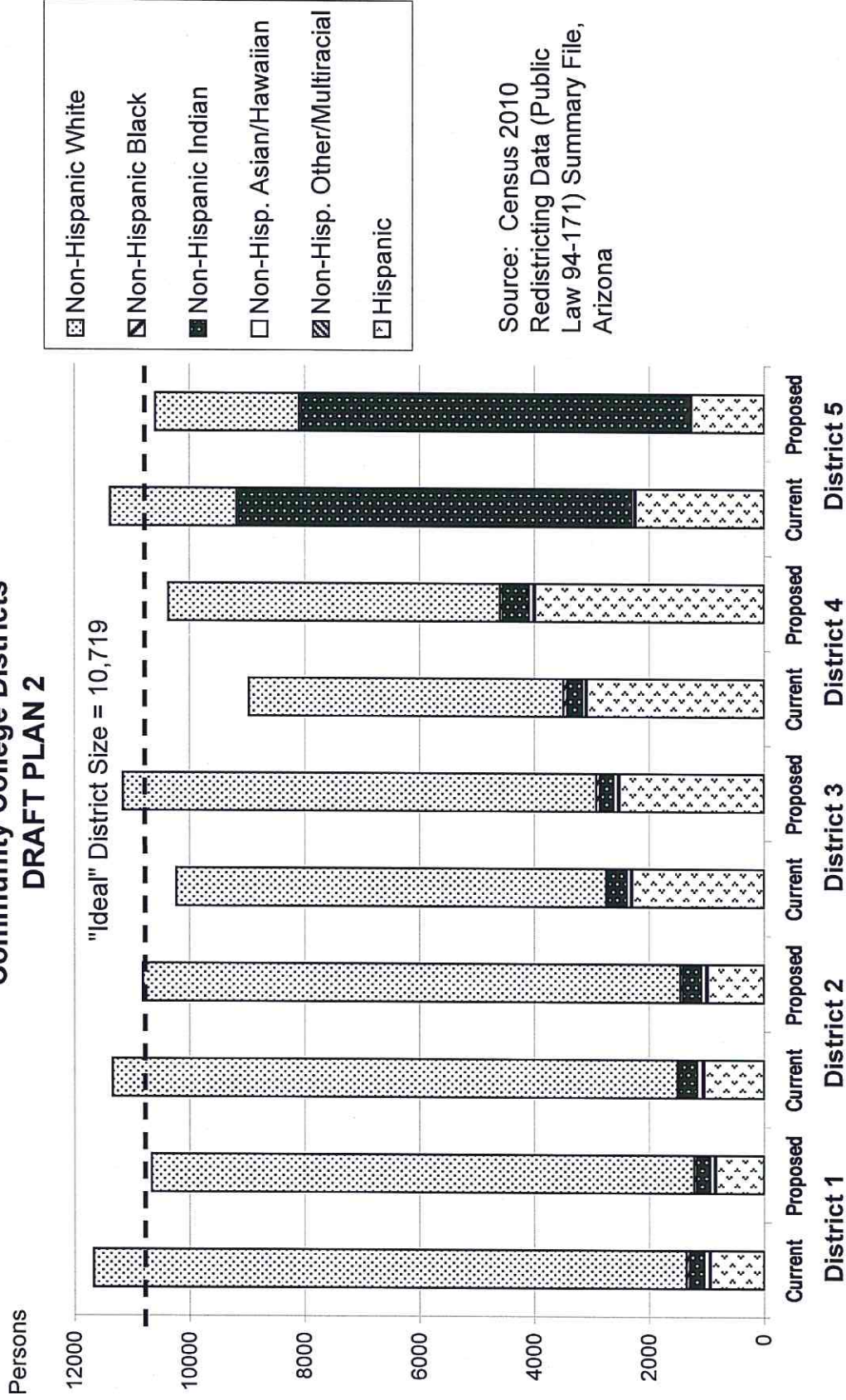
Source: Census 2010 Redistricting Data (Public Law 94-171) Summary file, Arizona
Tabulation: Research Advisory Services, Inc., Phoenix AZ (602) 230-9580

**GILA COUNTY COMMUNITY COLLEGE DISTRICTS
VOTING-AGE POPULATIONS BY RACE AND HISPANIC ORIGIN
DRAFT PLAN 2**

<u>Voting-Age Number:</u>	<u>District 1</u>	<u>District 2</u>	<u>District 3</u>	<u>District 4</u>	<u>District 5</u>	<u>Total, All Districts</u>
Hispanic, of any race	512	632	1,746	2,771	890	6,551
Non-Hispanic White	8,236	7,832	7,058	4,663	2,006	29,795
Non-Hispanic Black	29	24	45	31	42	171
Non-Hispanic American Indian	174	226	154	317	4,268	5,139
Non-Hispanic Asian	54	64	53	63	18	252
Non-Hispanic Hawaiian	11	8	10	1	0	30
Non-Hispanic other race	3	16	12	8	5	44
Non-Hispanic two or more races	5	8	10	9	11	43
<i>Voting-Age Population</i>	9,024	8,810	9,088	7,863	7,240	42,025
<u>Voting-Age Percent:</u>						
Hispanic, of any race	5.67%	7.17%	19.21%	35.24%	12.29%	15.59%
Non-Hispanic White	91.27%	88.90%	77.66%	59.30%	27.71%	70.90%
Non-Hispanic Black	0.32%	0.27%	0.50%	0.39%	0.58%	0.41%
Non-Hispanic American Indian	1.93%	2.57%	1.69%	4.03%	58.95%	12.23%
Non-Hispanic Asian	0.60%	0.73%	0.58%	0.80%	0.25%	0.60%
Non-Hispanic Hawaiian	0.12%	0.09%	0.11%	0.01%	0.00%	0.07%
Non-Hispanic other race	0.03%	0.18%	0.13%	0.10%	0.07%	0.10%
Non-Hispanic two or more races	0.06%	0.09%	0.11%	0.11%	0.15%	0.10%
<i>Voting-Age Percent</i>	100.00%	100.00%	100.00%	100.00%	100.00%	100.00%

Source: Census 2010 Redistricting Data (Public Law 94-171) Summary file, Arizona
Tabulation: Research Advisory Services, Inc., Phoenix AZ (602) 230-9580

Race and Origin Composition of Current and Proposed Gila County Community College Districts DRAFT PLAN 2



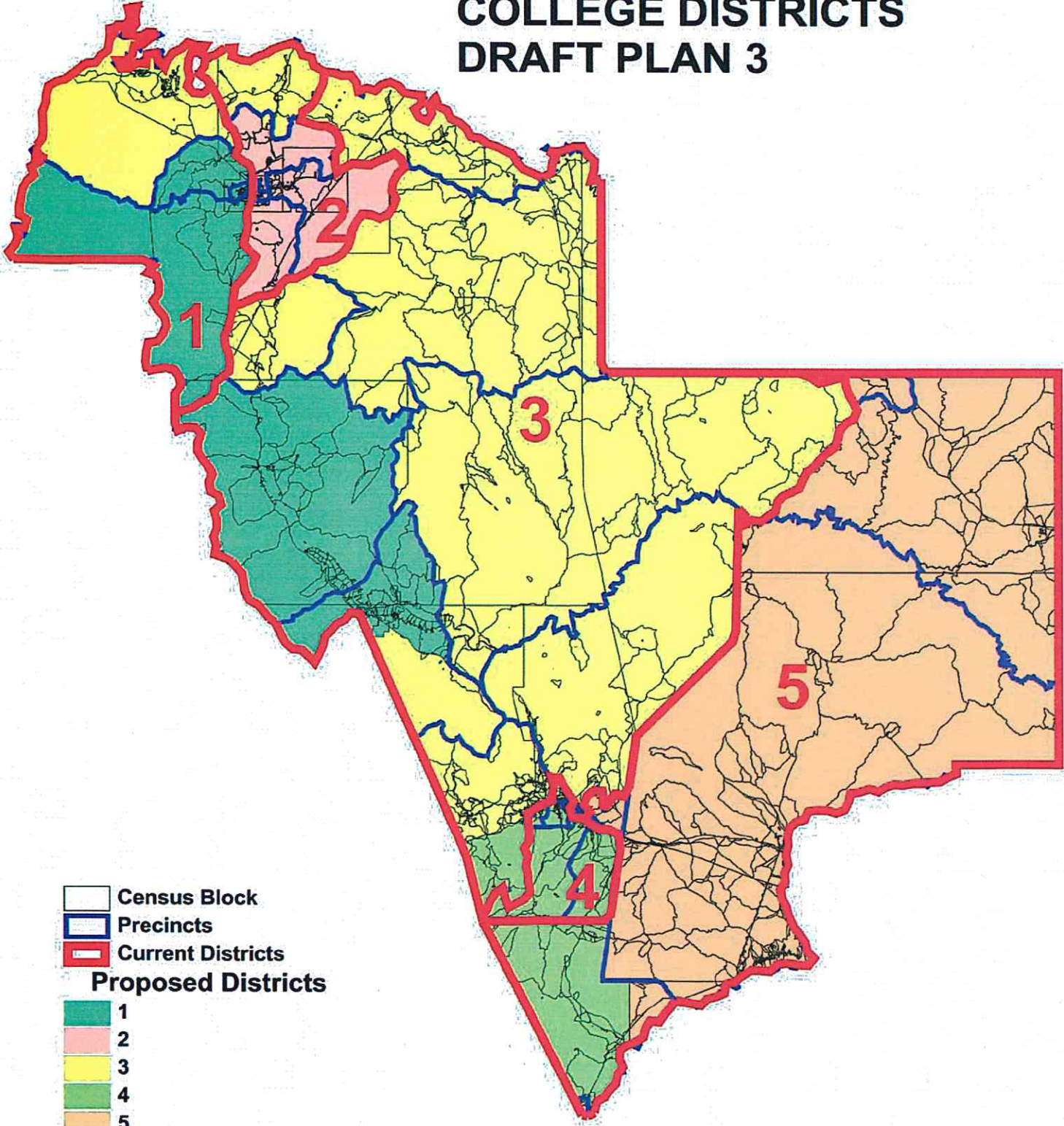
**GILA COUNTY COMMUNITY COLLEGE DISTRICTS
DRAFT PLAN 2**









	Current Districts	Proposed Plan	Change
Population, District 1	11,670	10,665	-1,005
Population, District 2	11,342	10,812	-530
Population, District 3	10,231	11,158	927
Population, District 4	8,972	10,368	1,396
Population, District 5	11,382	10,594	-788
Population deviation, District 1	951	-54	
Population deviation, District 2	623	93	
Population deviation, District 3	-488	439	
Population deviation, District 4	-1,747	-351	
Population deviation, District 5	663	-125	
Percent deviation, District 1	8.87%	-0.51%	
Percent deviation, District 2	5.81%	0.86%	
Percent deviation, District 3	-4.56%	4.09%	
Percent deviation, District 4	-16.30%	-3.28%	
Percent deviation, District 5	6.18%	-1.17%	
Total plan deviation, number	2,698	790	
Total plan deviation, percent	25.17%	7.37%	
Percent voting-age Hispanic, District 1	5.89%	5.67%	-0.22%
Percent voting-age Hispanic, District 2	7.24%	7.17%	-0.07%
Percent voting-age Hispanic, District 3	19.20%	19.21%	0.01%
Percent voting-age Hispanic, District 4	31.10%	35.24%	4.14%
Percent voting-age Hispanic, District 5	19.92%	12.29%	-7.63%
Percent voting-age Non-Hispanic Native American, District 1	1.93%	1.93%	0.00%
Percent voting-age Non-Hispanic Native American, District 2	2.37%	2.57%	0.20%
Percent voting-age Non-Hispanic Native American, District 3	2.69%	1.69%	-1.00%
Percent voting-age Non-Hispanic Native American, District 4	2.40%	4.03%	1.63%
Percent voting-age Non-Hispanic Native American, District 5	55.19%	58.95%	3.76%
Percent voting-age Non-Hispanic Black, District 1	0.35%	0.32%	-0.03%
Percent voting-age Non-Hispanic Black, District 2	0.22%	0.27%	0.05%
Percent voting-age Non-Hispanic Black, District 3	0.35%	0.50%	0.15%
Percent voting-age Non-Hispanic Black, District 4	0.73%	0.39%	-0.34%
Percent voting-age Non-Hispanic Black, District 5	0.48%	0.58%	0.10%
Percent voting-age total minority residents, District 1	8.97%	8.73%	-0.24%
Percent voting-age total minority residents, District 2	10.91%	11.10%	0.19%
Percent voting-age total minority residents, District 3	23.12%	22.34%	-0.78%
Percent voting-age total minority residents, District 4	35.12%	40.70%	5.58%
Percent voting-age total minority residents, District 5	76.31%	72.29%	-4.02%

Changes to DRAFT PLAN 2:

1. Moved Sierra Ancha precinct from CCD3 to CCD5
2. Moved blocks at north end of Claypool 3 precinct from CCD4 to CCD3
3. Moved blocks at south end of Central Heights precinct from CCD3 to CCD4
4. Moved blocks in East Globe precincts, north of Highway 60, from CCD5 to CCD4

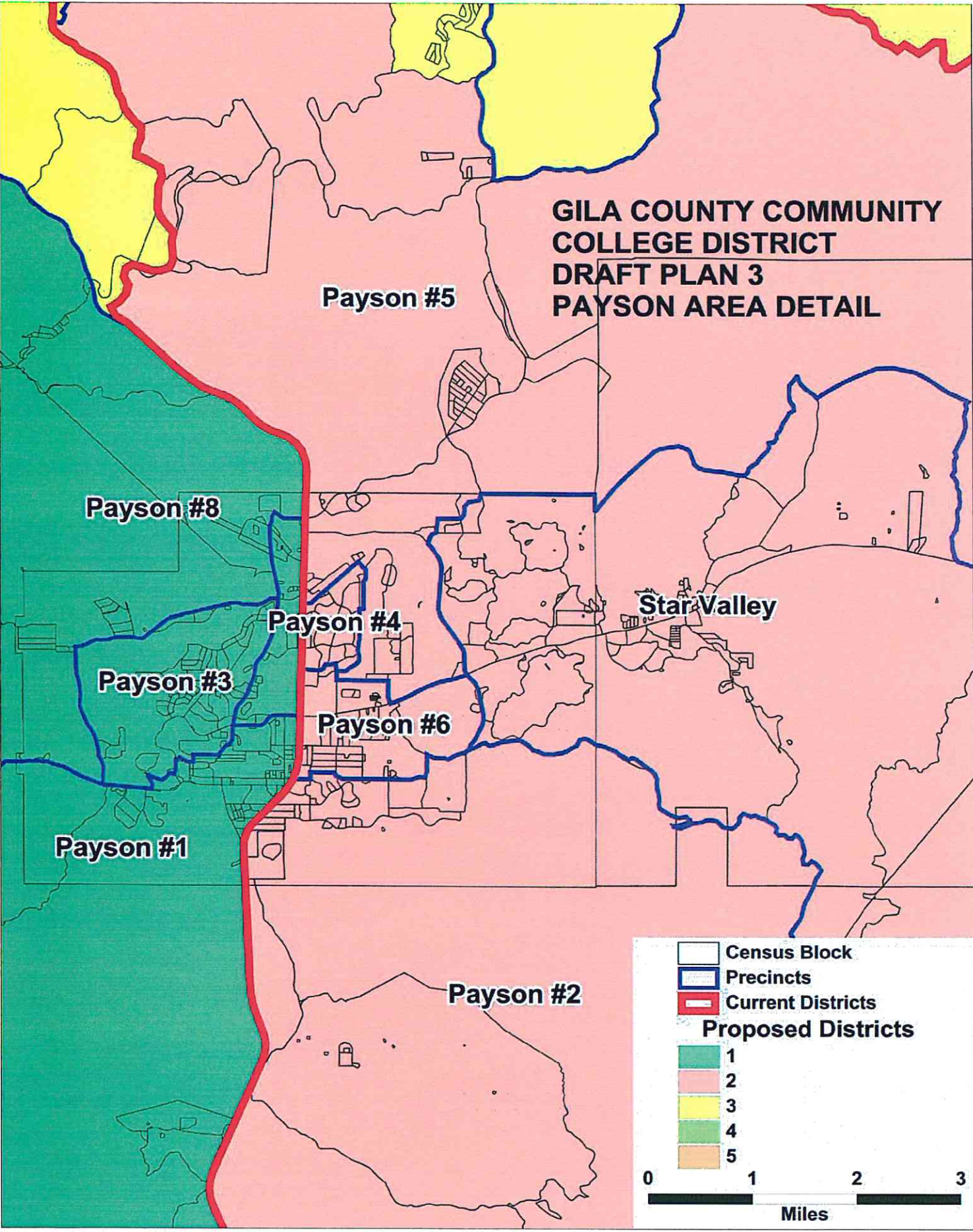
GILA COUNTY COMMUNITY COLLEGE DISTRICTS DRAFT PLAN 3



-  Census Block
-  Precincts
-  Current Districts
- Proposed Districts**
-  1
-  2
-  3
-  4
-  5



**GILA COUNTY COMMUNITY
COLLEGE DISTRICT
DRAFT PLAN 3
PAYSON AREA DETAIL**



Payson #8

Payson #5

Payson #4





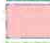



Star Valley

Payson #3

Payson #6

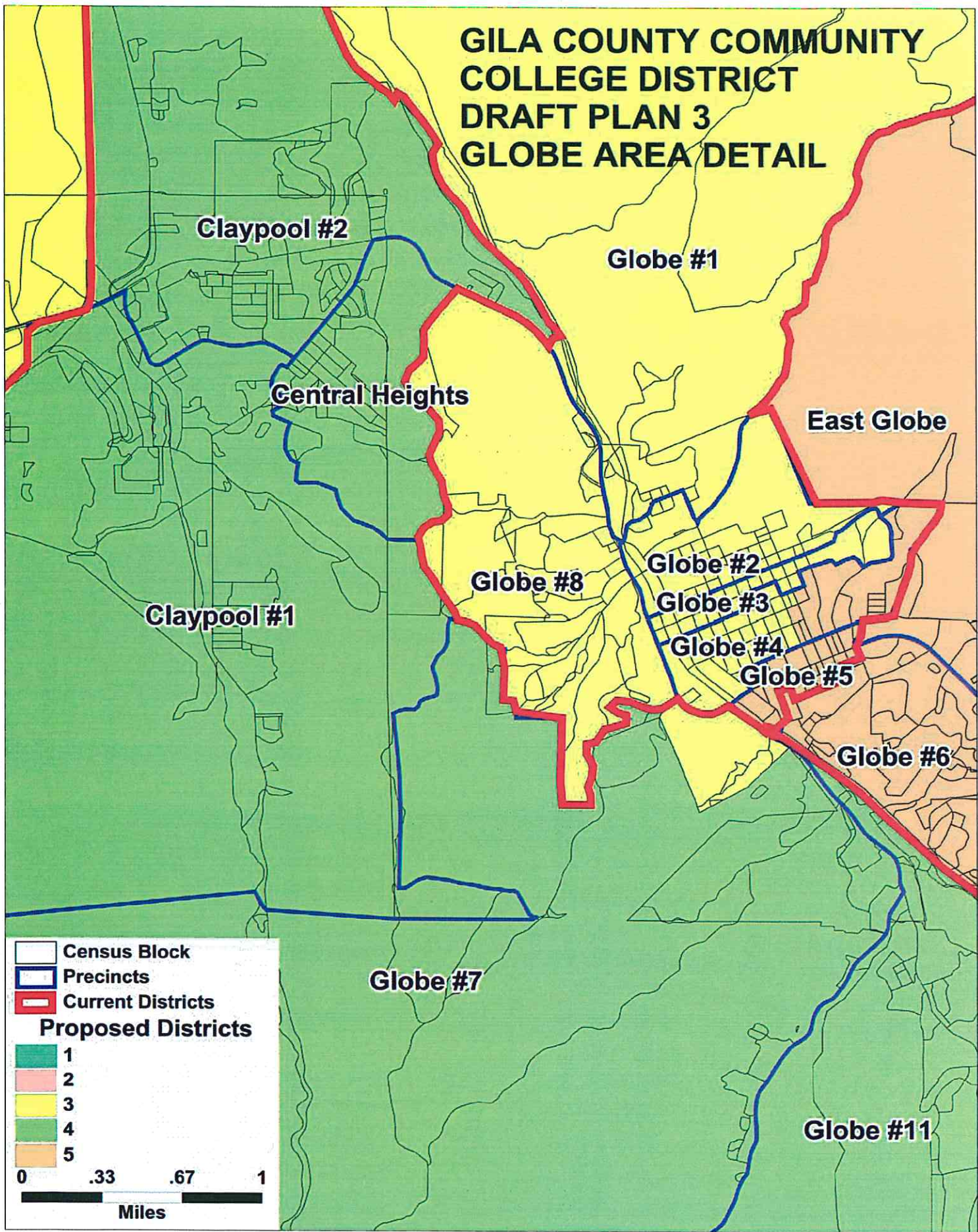
Payson #1

Payson #2

-  Census Block
-  Precincts
-  Current Districts
- Proposed Districts**
-  1
-  2
-  3
-  4
-  5



GILA COUNTY COMMUNITY COLLEGE DISTRICT DRAFT PLAN 3 GLOBE AREA DETAIL



**GILA COUNTY COMMUNITY COLLEGE DISTRICTS
TOTAL POPULATION BY RACE AND HISPANIC ORIGIN
DRAFT PLAN 3**

<u>Number:</u>	<u>District 1</u>	<u>District 2</u>	<u>District 3</u>	<u>District 4</u>	<u>District 5</u>	<u>Total, All Districts</u>
Hispanic, of any race	936	1,019	2,060	4,115	1,458	9,588
Non-Hispanic White	9,313	9,328	8,479	5,867	2,311	35,298
Non-Hispanic Black	61	39	33	74	41	248
Non-Hispanic American Indian	238	301	306	287	6,843	7,975
Non-Hispanic Asian	57	80	74	51	59	321
Non-Hispanic Hawaiian	9	8	13	8	1	39
Non-Hispanic other race	16	17	11	16	6	66
Non-Hispanic two or more races	7	14	13	7	21	62
Total Population	10,637	10,806	10,989	10,425	10,740	53,597
<u>Percent:</u>						
Hispanic, of any race	8.80%	9.43%	18.75%	39.47%	13.58%	17.89%
Non-Hispanic White	87.55%	86.32%	77.16%	56.28%	21.52%	65.86%
Non-Hispanic Black	0.57%	0.36%	0.30%	0.71%	0.38%	0.46%
Non-Hispanic American Indian	2.24%	2.79%	2.78%	2.75%	63.72%	14.88%
Non-Hispanic Asian	0.54%	0.74%	0.67%	0.49%	0.55%	0.60%
Non-Hispanic Hawaiian	0.08%	0.07%	0.12%	0.08%	0.01%	0.07%
Non-Hispanic other race	0.15%	0.16%	0.10%	0.15%	0.06%	0.12%
Non-Hispanic two or more races	0.07%	0.13%	0.12%	0.07%	0.20%	0.12%
Total Percent	100.00%	100.00%	100.00%	100.00%	100.00%	100.00%
Ideal Population	10,719	10,719	10,719	10,719	10,719	Total 10,719
Total Population	10,637	10,806	10,989	10,425	10,740	deviation: 10,740
Numeric deviation from Ideal Value	-82	87	270	-294	21	564
Percent deviation from Ideal Value	-0.77%	0.81%	2.52%	-2.75%	0.19%	5.26%

Source: Census 2010 Redistricting Data (Public Law 94-171) Summary file, Arizona
 Tabulation: Research Advisory Services, Inc., Phoenix AZ (602) 230-9580

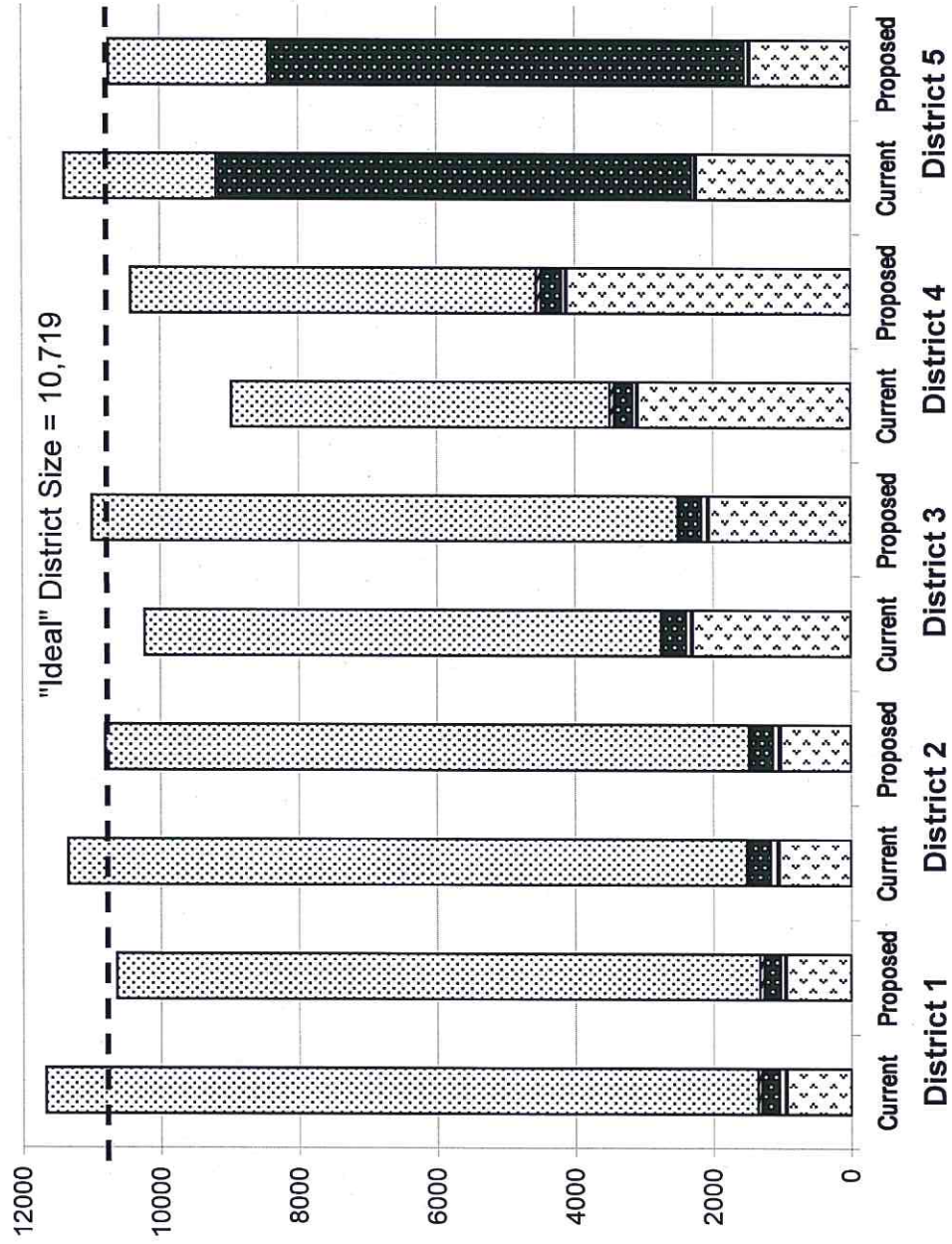
**GILA COUNTY COMMUNITY COLLEGE DISTRICTS
VOTING-AGE POPULATIONS BY RACE AND HISPANIC ORIGIN
DRAFT PLAN 3**

<u>Voting-Age Number:</u>	<u>District 1</u>	<u>District 2</u>	<u>District 3</u>	<u>District 4</u>	<u>District 5</u>	<u>Total, All Districts</u>
Hispanic, of any race	581	662	1,458	2,859	959	6,519
Non-Hispanic White	8,012	7,920	7,367	4,673	1,950	29,922
Non-Hispanic Black	40	21	20	50	40	171
Non-Hispanic American Indian	178	218	219	184	4,346	5,145
Non-Hispanic Asian	46	65	56	40	45	252
Non-Hispanic Hawaiian	8	7	9	5	1	30
Non-Hispanic other race	7	13	9	10	5	44
Non-Hispanic two or more races	6	10	9	6	12	43
Voting-Age Population	8,878	8,916	9,147	7,827	7,358	42,126
<u>Voting-Age Percent:</u>						
Hispanic, of any race	6.54%	7.42%	15.94%	36.53%	13.03%	15.48%
Non-Hispanic White	90.25%	88.83%	80.54%	59.70%	26.50%	71.03%
Non-Hispanic Black	0.45%	0.24%	0.22%	0.64%	0.54%	0.41%
Non-Hispanic American Indian	2.00%	2.45%	2.39%	2.35%	59.06%	12.21%
Non-Hispanic Asian	0.52%	0.73%	0.61%	0.51%	0.61%	0.60%
Non-Hispanic Hawaiian	0.09%	0.08%	0.10%	0.06%	0.01%	0.07%
Non-Hispanic other race	0.08%	0.15%	0.10%	0.13%	0.07%	0.10%
Non-Hispanic two or more races	0.07%	0.11%	0.10%	0.08%	0.16%	0.10%
Voting-Age Percent	100.00%	100.00%	100.00%	100.00%	100.00%	100.00%

Source: Census 2010 Redistricting Data (Public Law 94-171) Summary file, Arizona
 Tabulation: Research Advisory Services, Inc., Phoenix AZ (602) 230-9580

Race and Origin Composition of Current and Proposed Gila County Community College Districts DRAFT PLAN 3

Persons



- Non-Hispanic White
- Non-Hispanic Black
- Non-Hispanic Indian
- Non-Hisp. Asian/Hawaiian
- Non-Hisp. Other/Multiracial
- Hispanic

Source: Census 2010
Redistricting Data (Public
Law 94-171) Summary File,
Arizona

**GILA COUNTY COMMUNITY COLLEGE DISTRICTS
DRAFT PLAN 3**

	Current Districts	Proposed Plan	Change
Population, District 1	11,670	10,637	-1,033
Population, District 2	11,342	10,806	-536
Population, District 3	10,231	10,989	758
Population, District 4	8,972	10,425	1,453
Population, District 5	11,382	10,740	-642
Population deviation, District 1	951	-82	
Population deviation, District 2	623	87	
Population deviation, District 3	-488	270	
Population deviation, District 4	-1,747	-294	
Population deviation, District 5	663	21	
Percent deviation, District 1	8.87%	-0.77%	
Percent deviation, District 2	5.81%	0.81%	
Percent deviation, District 3	-4.56%	2.52%	
Percent deviation, District 4	-16.30%	-2.75%	
Percent deviation, District 5	6.18%	0.19%	
Total plan deviation, number	2,698	564	
Total plan deviation, percent	25.17%	5.26%	
Percent voting-age Hispanic, District 1	5.89%	6.54%	0.65%
Percent voting-age Hispanic, District 2	7.24%	7.42%	0.18%
Percent voting-age Hispanic, District 3	19.20%	15.94%	-3.26%
Percent voting-age Hispanic, District 4	31.10%	36.53%	5.43%
Percent voting-age Hispanic, District 5	19.92%	13.03%	-6.89%
Percent voting-age Non-Hispanic Native American, District 1	1.93%	2.00%	0.07%
Percent voting-age Non-Hispanic Native American, District 2	2.37%	2.45%	0.08%
Percent voting-age Non-Hispanic Native American, District 3	2.69%	2.39%	-0.30%
Percent voting-age Non-Hispanic Native American, District 4	2.40%	2.35%	-0.05%
Percent voting-age Non-Hispanic Native American, District 5	55.19%	59.06%	3.87%
Percent voting-age Non-Hispanic Black, District 1	0.35%	0.45%	0.10%
Percent voting-age Non-Hispanic Black, District 2	0.22%	0.24%	0.02%
Percent voting-age Non-Hispanic Black, District 3	0.35%	0.22%	-0.13%
Percent voting-age Non-Hispanic Black, District 4	0.73%	0.64%	-0.09%
Percent voting-age Non-Hispanic Black, District 5	0.48%	0.54%	0.06%
Percent voting-age total minority residents, District 1	8.97%	9.75%	0.78%
Percent voting-age total minority residents, District 2	10.91%	11.17%	0.26%
Percent voting-age total minority residents, District 3	23.12%	19.46%	-3.66%
Percent voting-age total minority residents, District 4	35.12%	40.30%	5.18%
Percent voting-age total minority residents, District 5	76.31%	73.50%	-2.81%

Changes to DRAFT PLAN 3:

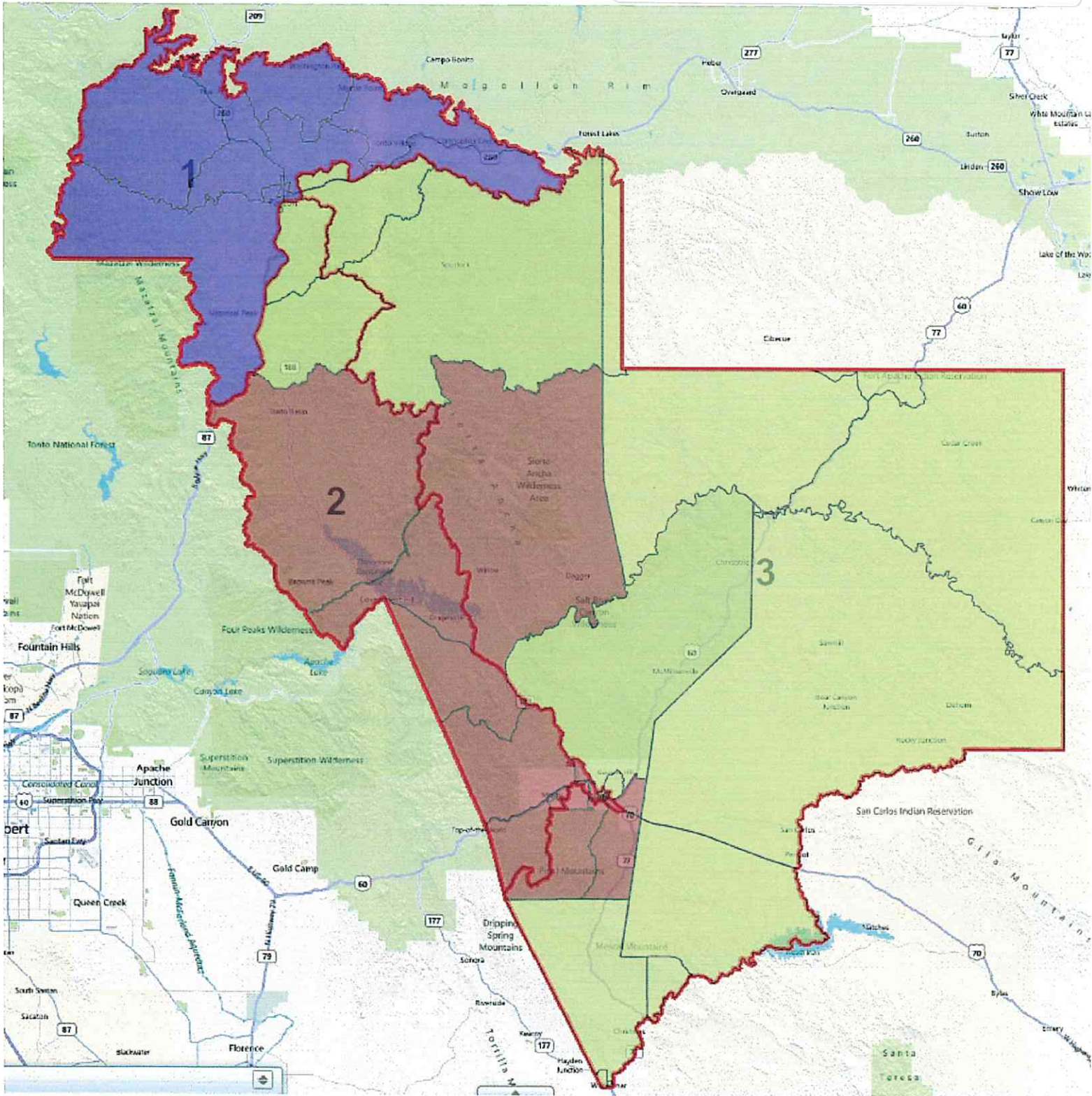
1. Moved Carrizo precinct from CCD3 to CCD5
2. Moved Hayden, Winkelman and the non-reserv. part of Christmas precinct from CCD5 to CCD3
3. Moved Miami #1 precinct south of Hwy 60 from CCD3 to CCD4
4. Moved six blocks at the north end of Globe #7 from CCD4 to CCD3

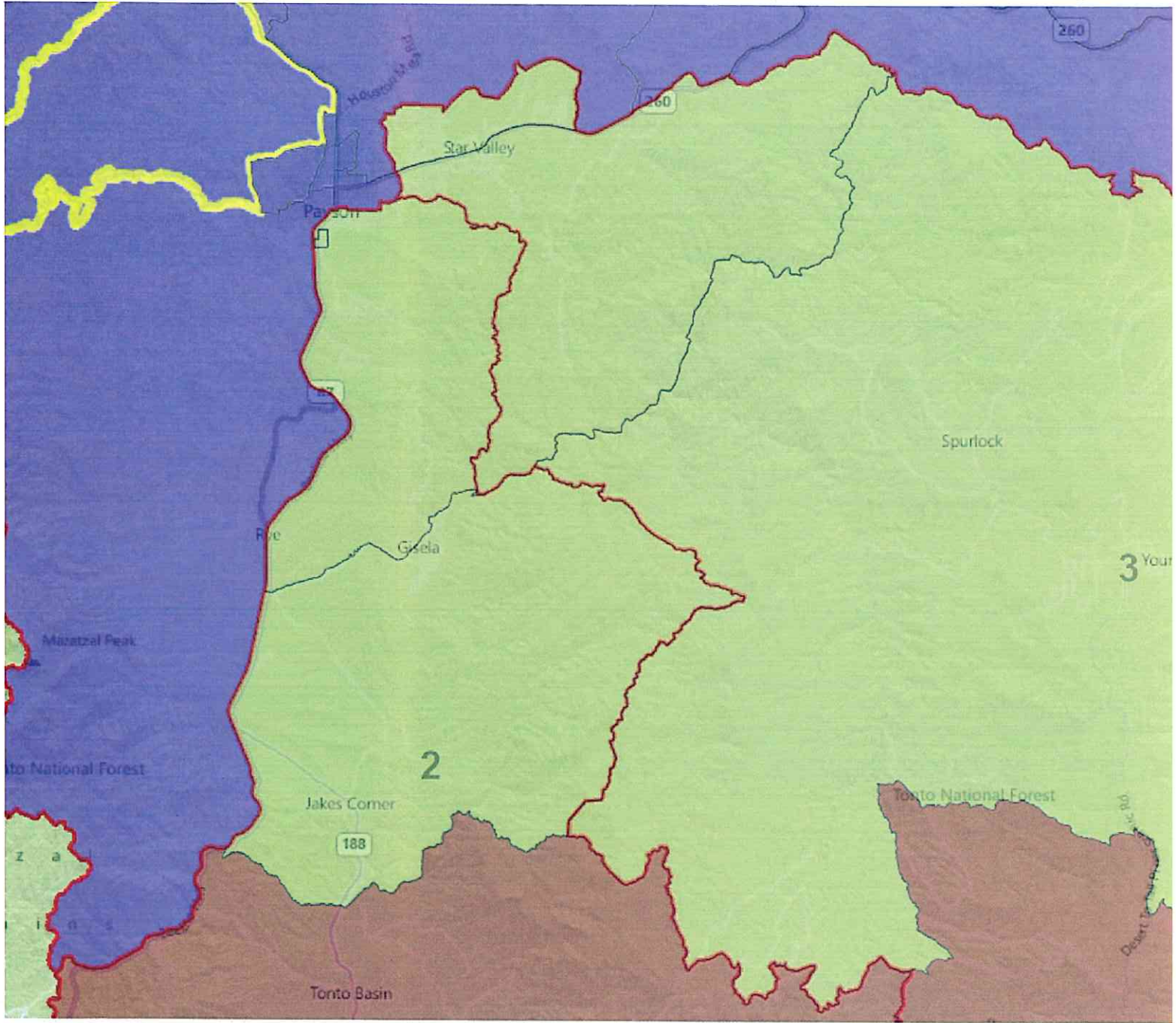
PRECINCT LOCATIONS IN COMBINATION PLANS

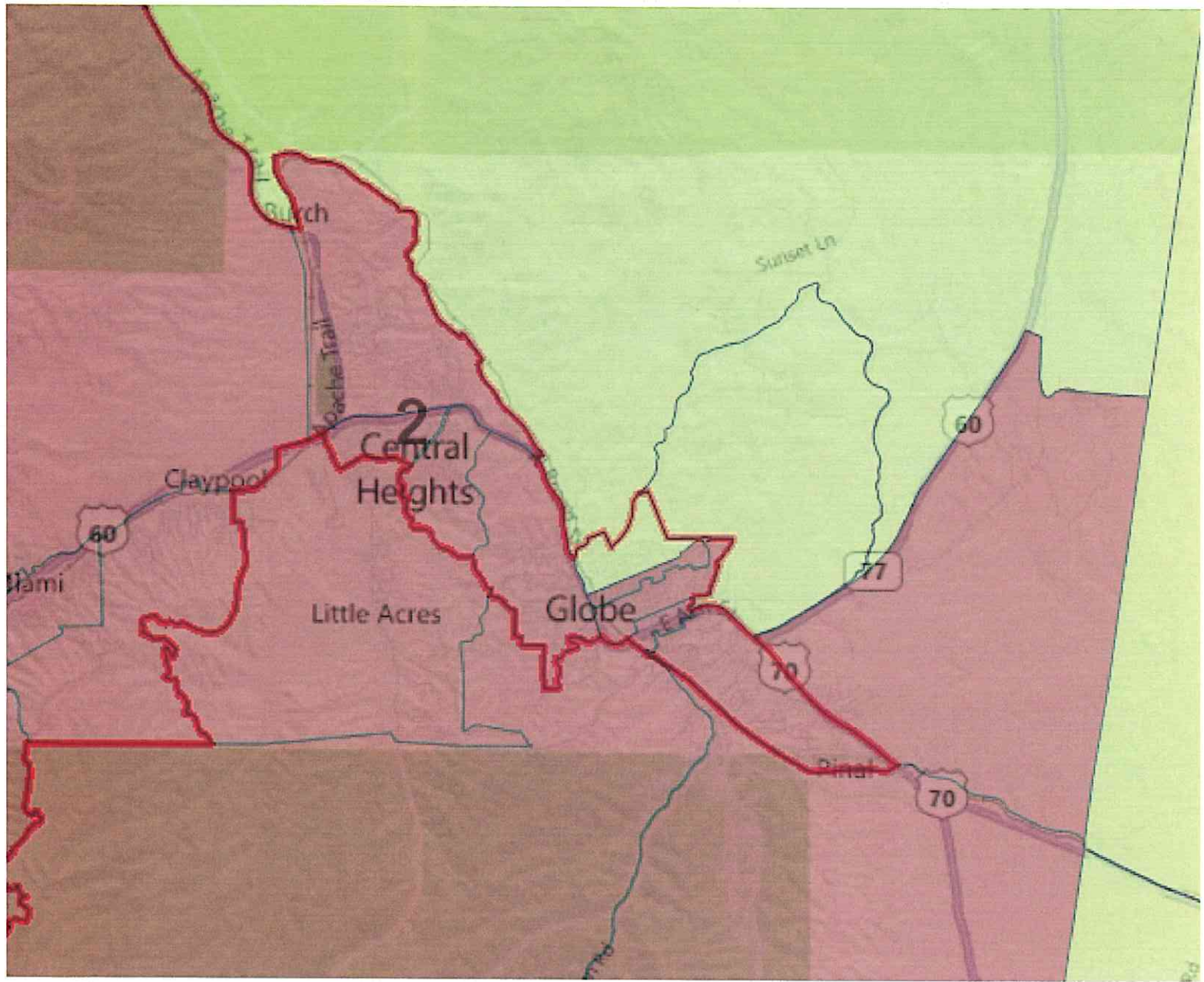
Precinct	Current District	Plan AA	Plan BB	Plan CC
Payson #1	1	1	1	1
Payson #3	1	1	1	1
Payson #4	1	1	1	1
Payson #5	1	1	1	1
Payson #6	1	1	1	1
Payson #7	1	1	1	1
Payson #8	1	1	1	1
Pine-Strawberry Pt. A	1	1	1	1
Pine-Strawberry Pt. B	1	1	1	1
Whispering Pines	1	1	1	1
Zane Grey Pt. A	1	1	1	1
Zane Grey Pt. B	1	1	1	1
Central Heights	2	2	2	2
Claypool #2 Pt. A	2	2	2	2
Claypool #2 Pt. B	2	2	2	2
Claypool #3	2	2	2	2
Gisela	2	3	3	3
Globe #2	2	3	3	2
Globe #3	2	2	2	2
Globe #4	2	2	2	2
Globe #5	2	2	2	2
Globe #6	2	2	2	2
Globe #8	2	2	2	2
Miami #1 Pt. A	2	2	2	2
Miami #1 Pt. B	2	2	2	2
Miami #3	2	2	2	2
Payson #2 Pt. A	2	3	3	3
Payson #2 Pt. B-Res.	2	3	3	3
Roosevelt Pt. A	2	2	2	2
Roosevelt Pt. B	2	2	2	2
Tonto Basin	2	2	2	2
Canyon Day-Res.	3	3	3	3
Carrizo	3	3	3	3
Christmas Pt. A	3	3	3	3
Christmas Pt. B-Res.	3	3	3	3
Claypool #1	3	2	2	2
East Globe Pt. A	3	3	2	3
East Globe Pt. B	3	2	2	3
Globe #1	3	3	3	3
Globe #11	3	2	2	2
Globe #7	3	2	2	2
Hayden	3	3	3	3
San Carlos Pt. A-Res.	3	3	3	3
San Carlos Pt. B-Res.	3	3	3	3
Sierra Ancha Pt. A	3	2	2	2
Sierra Ancha Pt. B-Res.	3	3	3	3
Star Valley Pt. A	3	3	3	3
Star Valley Pt. B	3	3	3	3
Winkelman	3	3	3	3
Young Pt. A	3	3	3	3
Young Pt. B-Res.	3	3	3	3

Combination
Plans Discussed
& Discarded

Combination Plan AA







**GILA COUNTY SUPERVISORIAL DISTRICTS
TOTAL POPULATION BY RACE AND HISPANIC ORIGIN
PLAN AA**

<u>Number:</u>	<u>District 1</u>	<u>District 2</u>	<u>District 3</u>	<u>Total, All Districts</u>
Hispanic, of any race	1,467	5,633	2,488	9,588
Non-Hispanic White	16,025	11,043	8,230	35,298
Non-Hispanic Black	87	122	39	248
Non-Hispanic American Indian	357	672	6,946	7,975
Non-Hispanic Asian	114	142	65	321
Non-Hispanic Hawaiian	22	11	6	39
Non-Hispanic other race	20	29	17	66
Non-Hispanic two or more races	13	22	27	62
Total Population	18,105	17,674	17,818	53,597

<u>Percent:</u>				
Hispanic, of any race	8.10%	31.87%	13.96%	17.89%
Non-Hispanic White	88.51%	62.48%	46.19%	65.86%
Non-Hispanic Black	0.48%	0.69%	0.22%	0.46%
Non-Hispanic American Indian	1.97%	3.80%	38.98%	14.88%
Non-Hispanic Asian	0.63%	0.80%	0.36%	0.60%
Non-Hispanic Hawaiian	0.12%	0.06%	0.03%	0.07%
Non-Hispanic other race	0.11%	0.16%	0.10%	0.12%
Non-Hispanic two or more races	0.07%	0.12%	0.15%	0.12%
Total Percent	100.00%	100.00%	100.00%	100.00%

Ideal Population	17,866	17,866	17,866	Total 17,866
Total Population	18,105	17,674	17,818	deviation: 17,818
Numeric deviation from Ideal Value	239	-192	-48	431
Percent deviation from Ideal Value	1.34%	-1.07%	-0.27%	2.41%

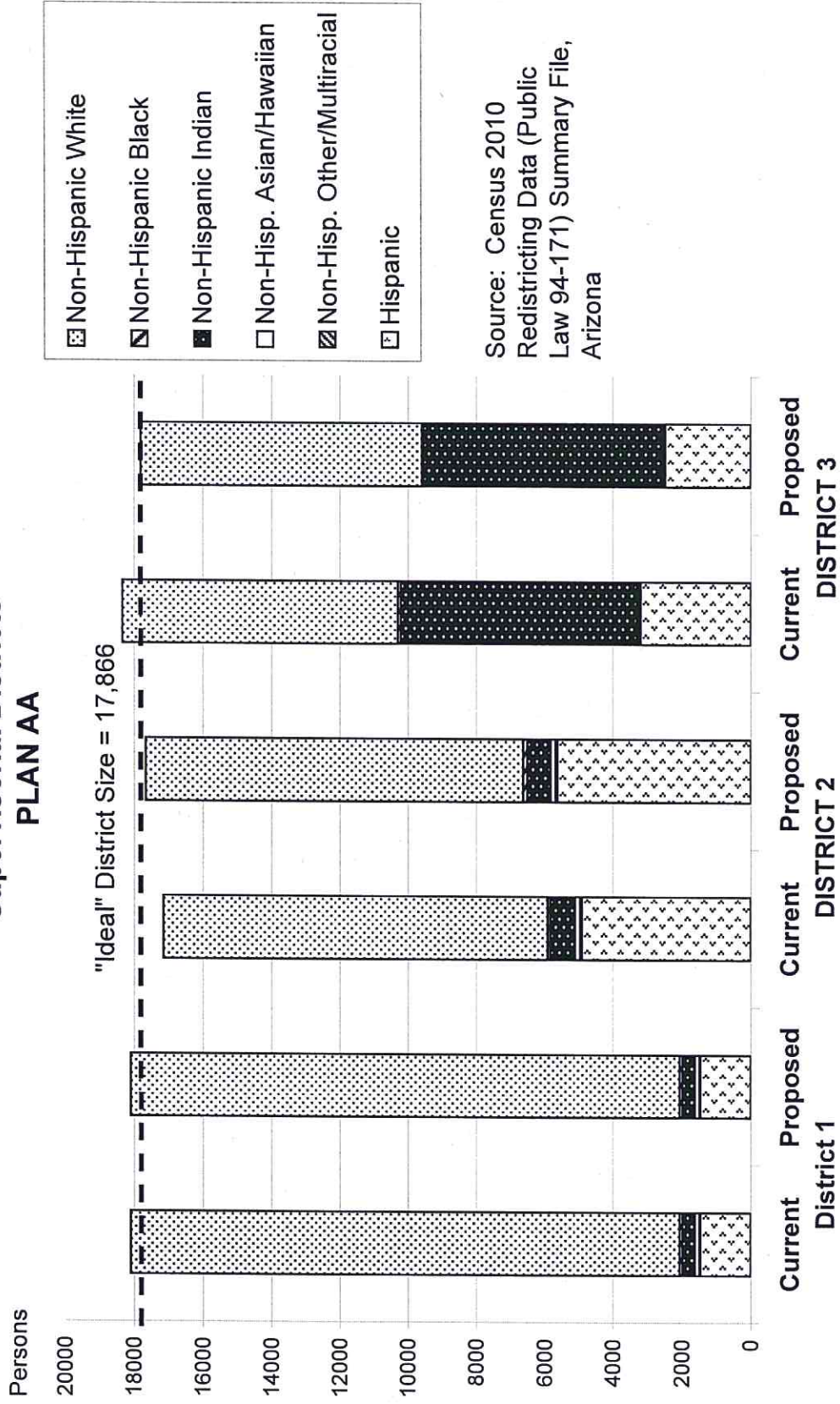
Source: Census 2010 Redistricting Data (Public Law 94-171) Summary file, Arizona
 Tabulation: Research Advisory Services, Inc., Phoenix AZ (602) 230-9580

**GILA COUNTY SUPERVISORIAL DISTRICTS
VOTING-AGE POPULATION BY RACE AND HISPANIC ORIGIN
PLAN AA**

<u>Voting-Age Number:</u>	<u>District 1</u>	<u>District 2</u>	<u>District 3</u>	<u>Total, All Districts</u>
Hispanic, of any race	947	3,879	1,693	6,519
Non-Hispanic White	13,806	9,207	6,909	29,922
Non-Hispanic Black	47	97	27	171
Non-Hispanic American Indian	266	456	4,423	5,145
Non-Hispanic Asian	90	112	50	252
Non-Hispanic Hawaiian	17	8	5	30
Non-Hispanic other race	9	22	13	44
Non-Hispanic two or more races	11	15	17	43
Voting-Age Population	15,193	13,796	13,137	42,126
 <u>Voting-Age Percent:</u>				
Hispanic, of any race	6.23%	28.12%	12.89%	15.48%
Non-Hispanic White	90.87%	66.74%	52.59%	71.03%
Non-Hispanic Black	0.31%	0.70%	0.21%	0.41%
Non-Hispanic American Indian	1.75%	3.31%	33.67%	12.21%
Non-Hispanic Asian	0.59%	0.81%	0.38%	0.60%
Non-Hispanic Hawaiian	0.11%	0.06%	0.04%	0.07%
Non-Hispanic other race	0.06%	0.16%	0.10%	0.10%
Non-Hispanic two or more races	0.07%	0.11%	0.13%	0.10%
Voting-Age Percent	100.00%	100.00%	100.00%	100.00%

Source: Census 2010 Redistricting Data (Public Law 94-171) Summary file, Arizona
 Tabulation: Research Advisory Services, Inc., Phoenix AZ (602) 230-9560

Race and Origin Composition of Current and Proposed Gila County Supervisory Districts PLAN AA



**GILA COUNTY SUPERVISORIAL DISTRICTS
PLAN AA**

	Current	Proposed Plan	Change
Population, District 1	18,105	18,105	0
Population, District 2	17,151	17,674	523
Population, District 3	18,341	17,818	-523
Population deviation, District 1	239	239	
Population deviation, District 2	-715	-192	
Population deviation, District 3	475	-48	
Percent deviation, District 1	1.34%	1.34%	
Percent deviation, District 2	-4.00%	-1.07%	
Percent deviation, District 3	2.66%	-0.27%	
Total plan deviation, number	1,190	431	
Total plan deviation, percent	6.66%	2.41%	
Percent voting-age Hispanic, District 1	6.23%	6.23%	0.00%
Percent voting-age Hispanic, District 2	24.88%	28.12%	3.24%
Percent voting-age Hispanic, District 3	16.45%	12.89%	-3.56%
Percent V-A Non-Hispanic Native American, District 1	1.75%	1.75%	0.00%
Percent V-A Non-Hispanic Native American, District 2	3.63%	3.31%	-0.32%
Percent V-A Non-Hispanic Native American, District 3	32.77%	33.67%	0.90%
Percent V-A Non-Hispanic Black, District 1	0.31%	0.31%	0.00%
Percent V-A Non-Hispanic Black, District 2	0.46%	0.70%	0.24%
Percent V-A Non-Hispanic Black, District 3	0.46%	0.21%	-0.25%
Percent voting-age total minority residents, District 1	9.13%	9.13%	0.00%
Percent voting-age total minority residents, District 2	30.16%	33.26%	3.10%
Percent voting-age total minority residents, District 3	50.28%	47.41%	-2.87%

Map Name

TAT-LE1

Data	SUDIS -			Grand Total	% distribution		
	1	2	3		1	2	3
Sum of TOTPOP	18105	17674	17818	53597	33.8%	33.0%	33.2%
Sum of HISP	1467	5633	2488	9588	15.3%	58.8%	25.9%
Sum of WHITE	16025	11043	8230	35298	45.4%	31.3%	23.3%
Sum of BLACK	87	122	39	248	35.1%	49.2%	15.7%
Sum of INDIAN	357	672	6946	7975	4.5%	8.4%	87.1%
Sum of OTHER	169	204	115	488	34.6%	41.8%	23.6%
Sum of VOTEAGE	15193	13796	13137	42126	36.1%	32.7%	31.2%
Sum of VOTEHISP	947	3879	1693	6519	14.5%	59.5%	26.0%
Sum of VOTEWHITE	13806	9207	6909	29922	46.1%	30.8%	23.1%
Sum of VOTEBLACK	47	97	27	171	27.5%	56.7%	15.8%
Sum of VOTEINDIAN	266	456	4423	5145	5.2%	8.9%	86.0%
Sum of VOTEOTHER	127	157	85	369	34.4%	42.5%	23.0%
Sum of TREGVOTER	11318	9187	9654	30159	37.5%	30.5%	32.0%
Sum of TDEMVote	2640	4843	4365	11848	22.3%	40.9%	36.8%
Sum of TREPVote	5571	2440	2865	10876	51.2%	22.4%	26.3%
Sum of TINDVote	3107	1904	2424	7435	41.8%	25.6%	32.6%
Change	0	255	-255	0	0.0%	1.4%	-1.4%
Deviation from Ideal (17,866)	239	-192	-48	431			
% Deviation from Ideal	1.3%	-1.1%	-0.3%	2.4%			

Recalculate

Data	% of total			Overall
	1	2	3	
Hispanic All	8.1%	31.9%	14.0%	17.9%
White All	88.5%	62.5%	46.2%	65.9%
Black All	0.5%	0.7%	0.2%	0.5%
Indian All	2.0%	3.8%	39.0%	14.9%
Other All	0.9%	1.2%	0.6%	0.9%
Total Minority All	11.5%	37.5%	53.8%	34.1%
Total Minority All Change	0.0%	3.0%	-2.4%	
Hispanic Voter	6.2%	28.1%	12.9%	15.5%
Hispanic Voter Change	0.0%	3.2%	-3.6%	
White Voter	90.9%	66.7%	52.6%	71.0%
Black Voter	0.3%	0.7%	0.2%	0.4%
Indian Voter	1.8%	3.3%	33.7%	12.2%
Indian Voter Change	0.0%	-0.3%	0.9%	
Other Voter	0.8%	1.1%	0.6%	0.9%
Total Minority Voter	9.1%	32.9%	48.3%	29.0%
Minority Change	0.00%	2.78%	-1.97%	
Total Hispanic/Indian Voter	8.0%	31.4%	46.6%	27.7%
HispiIndian Change	0.0%	2.9%	-2.7%	
Registered Voter/TOTPOP	62.5%	52.0%	54.2%	56.3%
Registered Voter/Voting Age	74.5%	66.6%	73.5%	71.6%
Democrat	23.3%	52.7%	45.2%	39.3%
Republican	49.2%	26.6%	29.7%	36.1%
Independent	27.5%	20.7%	25.1%	24.7%