

Gila County Community College Redistricting Kit Instructions

It's your turn!

Gila County is asking for your ideas on how to draw new Community College districts to balance their populations after the 2010 Census. This online mapping program provides the tool you will need to draw, save and submit new districts, and this printed guide gives instructions for achieving the redistricting goals and hints for operating the online program.

The next three pages show data about all-age and voting-age populations in the five current Community College districts. The tables and bar graph also show the proportions of minority race and Hispanic Origin populations in each district.

As you move areas (which are based on the County's voting precincts) to create the five new districts, please remember the following redistricting criteria:

1. Each Community College District should end up with a population close to the "ideal" district size of 10,719 persons. (Note: use total population, not voting-age, for equalizing districts.)
2. As much as possible, districts should be geographically compact and connected.
3. Current districts with large minority populations (Districts 4 and 5) should end up with similar proportions in the re-drawn districts.
4. As much as possible, Indian Reservations should be kept whole within a district. Reservation precincts are denoted by "-R" in their precinct ID numbers.

The sequence of instructions in the "Redistricting Control Panel" on the left side of the screen will guide you through the process of registering. There is no cost to use this mapping program. Registration allows you to return later to continue working on a plan.

Work through the other instructions in the Control Panel. Play with the program for a while to get used to how it works. You can't damage the program. If you don't like a plan you have started, just close the browser and start again.

Remember that this program is online, not on your computer, so its response time may vary depending on how busy the Internet is.

You may find it useful to print out this guide to refer to as you use the online program, especially the demographic data on the following three pages.

**GILA COUNTY COMMUNITY COLLEGE DISTRICTS
CENSUS 2010 TOTAL POPULATION BY ELECTION DISTRICT**

	<u>District 1</u>	<u>District 2</u>	<u>District 3</u>	<u>District 4</u>	<u>District 5</u>	<u>Total, All Districts</u>
Number:						
Hispanic, of any race	934	1,041	2,294	3,085	2,234	9,588
Non-Hispanic White	10,317	9,830	7,477	5,475	2,199	35,298
Non-Hispanic Black	56	40	41	71	40	248
Non-Hispanic American Indian	254	305	318	262	6,836	7,975
Non-Hispanic Asian	69	87	71	50	44	321
Non-Hispanic Hawaiian	17	8	5	8	1	39
Non-Hispanic other race	15	17	12	16	6	66
Non-Hispanic two or more races	8	14	13	5	22	62
Total Population	11,670	11,342	10,231	8,972	11,382	53,597
Percent:						
Hispanic, of any race	8.00%	9.18%	22.42%	34.38%	19.63%	17.89%
Non-Hispanic White	88.41%	86.67%	73.08%	61.02%	19.32%	65.86%
Non-Hispanic Black	0.48%	0.35%	0.40%	0.79%	0.35%	0.46%
Non-Hispanic American Indian	2.18%	2.69%	3.11%	2.92%	60.06%	14.88%
Non-Hispanic Asian	0.59%	0.77%	0.69%	0.56%	0.39%	0.60%
Non-Hispanic Hawaiian	0.15%	0.07%	0.05%	0.09%	0.01%	0.07%
Non-Hispanic other race	0.13%	0.15%	0.12%	0.18%	0.05%	0.12%
Non-Hispanic two or more races	0.07%	0.12%	0.13%	0.06%	0.19%	0.12%
Total Percent	100.00%	100.00%	100.00%	100.00%	100.00%	100.00%
Ideal Population	10,719	10,719	10,719	10,719	10,719	Total
Total Population	11,670	11,342	10,231	8,972	11,382	deviation:
Numeric deviation from Ideal Value	951	623	-488	-1,747	663	2,698
Percent deviation from Ideal Value	8.87%	5.81%	-4.56%	-16.30%	6.18%	25.17%
Population in 2000	10,412	10,511	9,986	9,693	10,733	51,335
Population Change Since 2000	1,258	831	245	-721	649	2,262
Percent Change Since 2000	12.08%	7.91%	2.45%	-7.44%	6.05%	4.41%
Hispanic Population in 2000	496	543	2,208	3,246	2,053	8,546
Hispanic Population Change Since 2000	438	498	86	-161	181	1,042
Hispanic Percent Change Since 2000	88.31%	91.71%	3.89%	-4.96%	8.82%	12.19%

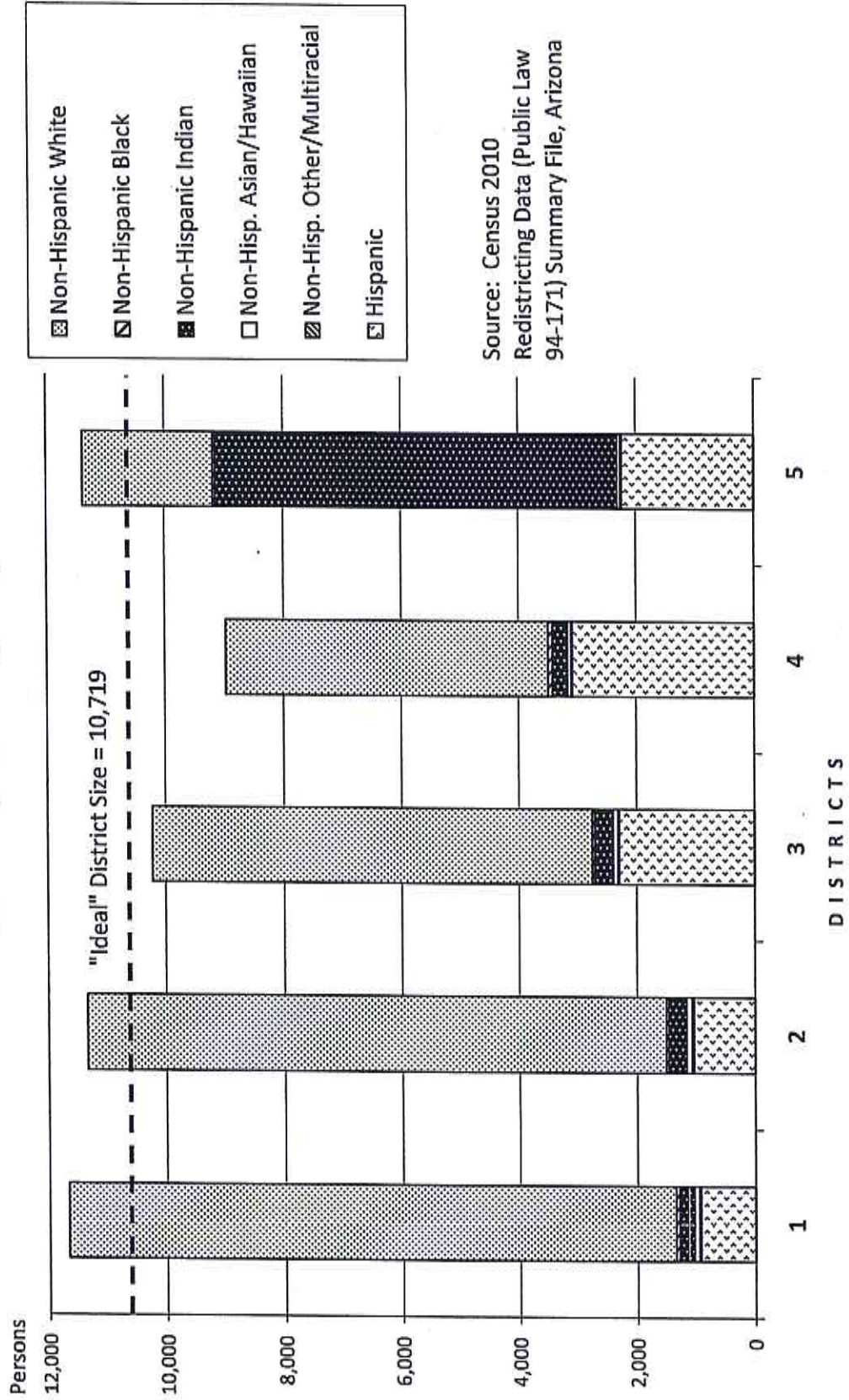
Source: Census 2010 Redistricting Data (Public Law 94-171) Summary file, Arizona
 Tabulation: Research Advisory Services, Inc., Phoenix AZ (602) 230-9580

**GILA COUNTY COMMUNITY COLLEGE DISTRICTS
CENSUS 2010 VOTING-AGE POPULATIONS BY ELECTION DISTRICT**

Voting-Age Number:	District 1	District 2	District 3	District 4	District 5	Total, All Districts
Hispanic, of any race	577	678	1,613	2,082	1,569	6,519
Non-Hispanic White	8,911	8,342	6,459	4,344	1,866	29,922
Non-Hispanic Black	34	21	29	49	38	171
Non-Hispanic American Indian	189	222	226	161	4,347	5,145
Non-Hispanic Asian	54	71	49	39	39	252
Non-Hispanic Hawaiian	12	7	5	5	1	30
Non-Hispanic other race	6	13	10	10	5	44
Non-Hispanic two or more races	6	10	10	5	12	43
Voting-Age Population	9,789	9,364	8,401	6,695	7,877	42,126
Voting-Age Percent:						
Hispanic, of any race	5.89%	7.24%	19.20%	31.10%	19.92%	15.48%
Non-Hispanic White	91.03%	89.09%	76.88%	64.88%	23.69%	71.03%
Non-Hispanic Black	0.35%	0.22%	0.35%	0.73%	0.48%	0.41%
Non-Hispanic American Indian	1.93%	2.37%	2.69%	2.40%	55.19%	12.21%
Non-Hispanic Asian	0.55%	0.76%	0.58%	0.58%	0.50%	0.60%
Non-Hispanic Hawaiian	0.12%	0.07%	0.06%	0.07%	0.01%	0.07%
Non-Hispanic other race	0.06%	0.14%	0.12%	0.15%	0.06%	0.10%
Non-Hispanic two or more races	0.06%	0.11%	0.12%	0.07%	0.15%	0.10%
Voting-Age Percent	100.00%	100.00%	100.00%	100.00%	100.00%	100.00%
Voting-Age Population in 2000	8,386	8,375	7,912	6,940	6,832	38,445
Voting-Age Pop. Change Since 2000	1,403	989	489	-245	1,045	3,681
Voting-Age Percent Change Since 2000	16.73%	11.81%	6.18%	-3.53%	15.30%	9.57%
Hispanic Voting-Age Population in 2000	342	336	1,484	2,120	1,364	5,646
Hispanic Voting-Age Change Since 2000	235	342	129	-38	205	873
Hispanic V-A Percent Change Since 2000	68.71%	101.79%	8.69%	-1.79%	15.03%	15.46%

Source: Census 2010 Redistricting Data (Public Law 94-171) Summary file, Arizona
 Tabulation: Research Advisory Services, Inc., Phoenix AZ (602) 230-9580

Race and Origin Composition of Current Gila County Community College Districts



Source: Census 2010
Redistricting Data (Public Law
94-171) Summary File, Arizona

Instrucciones para el Kit de la Nueva División de Distritos de Colegios Comunitarios del Condado de Gila

¡Es su turno!

El Condado de Gila le pide sus ideas sobre cómo diseñar nuevos distritos de Colegios Comunitarios para equilibrar sus poblaciones después del Censo 2010. Este programa de mapeo en línea proporciona la herramienta que usted necesitará para diseñar, guardar y presentar los nuevos distritos, y esta guía impresa le da instrucciones para lograr los objetivos de la nueva división de distritos y consejos para la operación del programa en línea.

Las próximas tres páginas muestran datos sobre las poblaciones de todas las edades y de la edad de votación en los cinco actuales distritos de Colegios Comunitarios. Las tablas y el gráfico de barras también muestran las proporciones de las poblaciones de minorías de razas y de origen hispano en cada distrito.

Mientras usted mueve las áreas (que se basan en los recintos de votación del Condado) para crear los cinco nuevos distritos, por favor recuerde los siguientes criterios de la nueva división de distritos:

1. Cada Distrito de Colegio Comunitario debe terminar con una población total cerca del tamaño "ideal" del distrito de 10,719 personas. (Note: use la población total, no la población de la edad de votación, para igualar a los distritos.)
2. Tanto como sea posible, los distritos deben ser compactos y conectados geográficamente.
3. Los actuales distritos con grandes poblaciones de minorías (Distritos 4 y 5) deben terminar con proporciones similares en los distritos rediseñados.
4. Tanto como sea posible, las Reservas Indias se deben mantener intacto dentro de un distrito. Los recintos de reservas se denotan por "-R" en los números de identificación de sus recintos.

La secuencia de instrucciones en el "Panel de Control de la Nueva División de Distritos" en el lado izquierdo de la pantalla le guiará a través del proceso de inscribirse. No hay ningún costo para usar este programa de mapeo. La inscripción le permite regresar más tarde para continuar trabajando en un plan.

Trabaje en las otras instrucciones en el Panel de Control. Juegue un rato con el programa para acostumbrarse a cómo funciona. No puede dañar el programa. Si no le gusta un plan que usted ha comenzado, simplemente cierre el navegador y comience de nuevo.

Recuerde que este programa está en línea, no en su computadora, así es que el tiempo de respuesta puede variar, depende del tráfico en el internet.

Usted puede encontrar útil imprimir esta guía para consultar mientras usa el programa en línea, especialmente los datos demográficos en las siguientes tres páginas.

**DISTRITOS DE COLEGIOS COMUNITARIOS DEL CONDADO DE GILA
POBLACIÓN TOTAL DEL CENSO 2010 POR DISTRITO DE ELECCIONES**

	<u>Distrito 1</u>	<u>Distrito 2</u>	<u>Distrito 3</u>	<u>Distrito 4</u>	<u>Distrito 5</u>	<u>Total, Todos</u> <u>Distritos</u>
Número						
Hispanos, de cualquier raza	934	1,041	2,294	3,085	2,234	9,588
Blancos no hispanos	10,317	9,830	7,477	5,475	2,199	35,298
Negros no hispanos	56	40	41	71	40	248
Indios americanos no hispanos	254	305	318	262	6,836	7,975
Asiáticos no hispanos	69	87	71	50	44	321
Hawaianos no hispanos	17	8	5	8	1	39
Otras razas no hispanas	15	17	12	16	6	66
Dos o más razas no hispanas	8	14	13	5	22	62
Población Total	11,670	11,342	10,231	8,972	11,382	53,597
Por Ciento						
Hispanos, de cualquier raza	8.00%	9.18%	22.42%	34.38%	19.63%	17.89%
Blancos no hispanos	88.41%	86.67%	73.08%	61.02%	19.32%	65.86%
Negros no hispanos	0.48%	0.35%	0.40%	0.79%	0.35%	0.46%
Indios americanos no hispanos	2.18%	2.69%	3.11%	2.92%	60.06%	14.88%
Asiáticos no hispanos	0.59%	0.77%	0.69%	0.56%	0.39%	0.60%
Hawaianos no hispanos	0.15%	0.07%	0.05%	0.09%	0.01%	0.07%
Otras razas no hispanas	0.13%	0.15%	0.12%	0.18%	0.05%	0.12%
Dos o más razas no hispanas	0.07%	0.12%	0.13%	0.06%	0.19%	0.12%
Por Ciento Total	100.00%	100.00%	100.00%	100.00%	100.00%	100.00%
Población Ideal	10,719	10,719	10,719	10,719	10,719	Desviación
Población Total	11,670	11,342	10,231	8,972	11,382	Total:
Desviación Numérica del Valor Ideal	951	623	-488	-1,747	663	2,698
Desviación de Por Ciento del Valor Ideal	8.87%	5.81%	-4.56%	-16.30%	6.18%	25.17%
Población en 2000	10,412	10,511	9,986	9,693	10,733	51,335
Cambio de Población desde 2000	1,258	831	245	-721	649	2,262
Cambio de Por Ciento desde 2000	12.08%	7.91%	2.45%	-7.44%	6.05%	4.41%
Población Hispana en 2000	496	543	2,208	3,246	2,053	8,546
Cambio de Población Hispana desde 2000	438	498	86	-161	181	1,042
Cambio de Por Ciento Hispano desde 2000	88.31%	91.71%	3.89%	-4.96%	8.82%	12.19%

Fuente: Archivo de Resumen de los Datos de la Nueva División de Distritos (Ley Pública 94-171) del Censo 2010, Arizona
 Tabulación: Research Advisory Services, Inc., Phoenix, AZ (602) 230-9580

**DISTRITOS DE COLEGIOS COMUNITARIOS DEL CONDADO DE GILA
POBLACIÓN DE LA EDAD DE VOTACIÓN DEL CENSO 2010 POR DISTRITO DE ELECCIONES**

Número de la Edad de Votación	Total, Todos				
	Distrito 1	Distrito 2	Distrito 3	Distrito 4	Distrito 5
Hispanos, de cualquier raza	577	678	1,613	2,082	1,569
Blancos no hispanos	8,911	8,342	6,459	4,344	1,866
Negros no hispanos	34	21	29	49	38
Indios americanos no hispanos	189	222	226	161	4,347
Asiáticos no hispanos	54	71	49	39	39
Hawaianos no hispanos	12	7	5	5	1
Otras razas no hispanas	6	13	10	10	5
Dos o más razas no hispanas	6	10	10	5	12
Población de la Edad de Votación	9,789	9,364	8,401	6,695	7,877

Por Ciento de la Edad de Votación	Total, Todos				
	Distrito 1	Distrito 2	Distrito 3	Distrito 4	Distrito 5
Hispanos, de cualquier raza	5.89%	7.24%	19.20%	31.10%	19.92%
Blancos no hispanos	91.03%	89.09%	76.88%	64.88%	23.69%
Negros no hispanos	0.35%	0.22%	0.35%	0.73%	0.48%
Indios americanos no hispanos	1.93%	2.37%	2.69%	2.40%	55.19%
Asiáticos no hispanos	0.55%	0.76%	0.58%	0.58%	0.50%
Hawaianos no hispanos	0.12%	0.07%	0.06%	0.07%	0.01%
Otras razas no hispanas	0.06%	0.14%	0.12%	0.15%	0.06%
Dos o más razas no hispanas	0.06%	0.11%	0.12%	0.07%	0.15%
Por Ciento de la Edad de Votación	100.00%	100.00%	100.00%	100.00%	100.00%

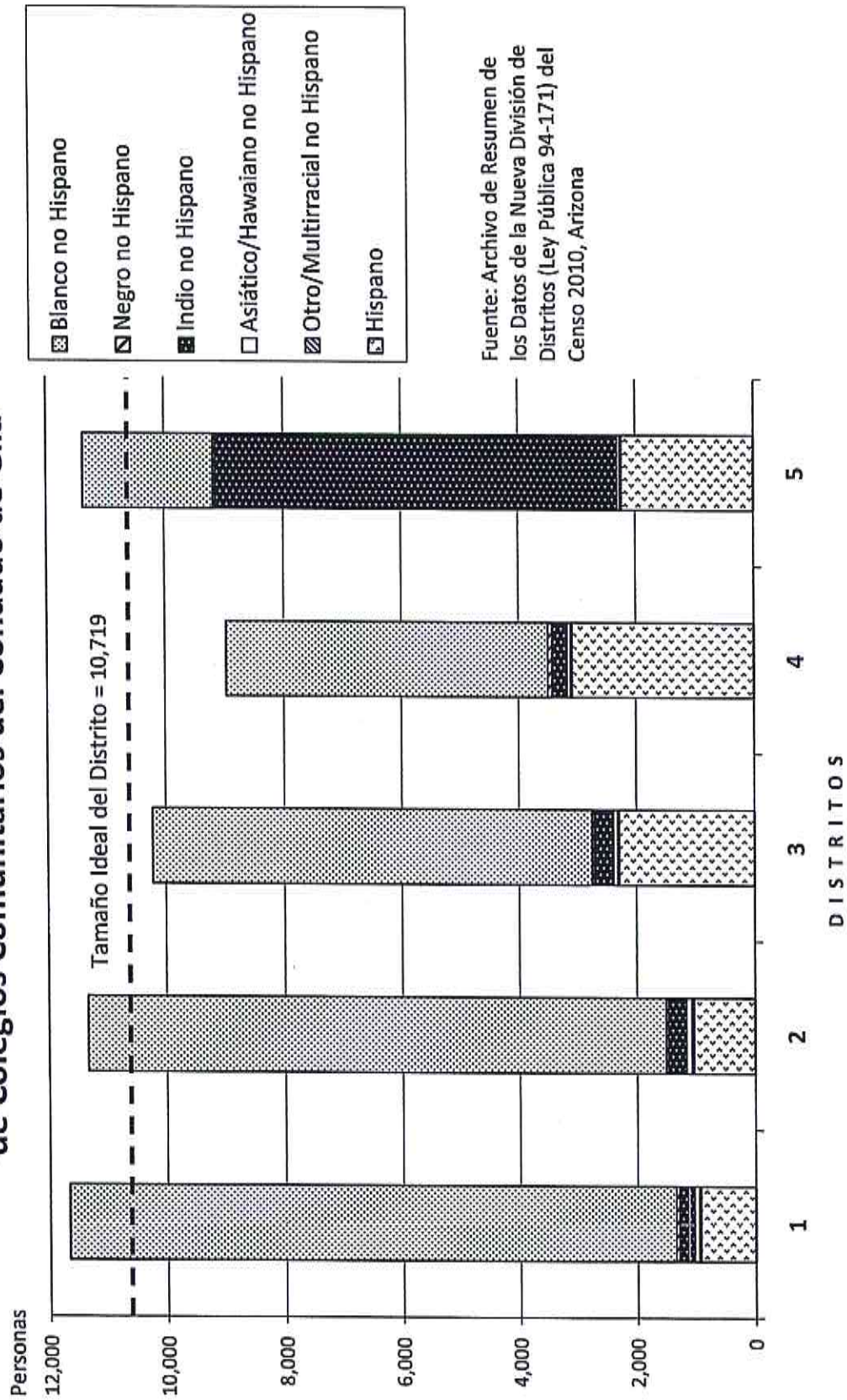
Población de la Edad de Votación en 2000	8,386	8,375	7,912	6,940	6,832
Cambio de Pob. de la Edad de Votación desde 2000	1,403	989	489	-245	1,045
Cambio de Por Ciento de la E-V desde 2000	16.73%	11.81%	6.18%	-3.53%	15.30%

Población Hispana de la Edad de Votación en 2000	342	336	1,484	2,120	1,364
Cambio de Pob. Hispana de la E-V desde 2000	235	342	129	-38	205
Cambio de Por Ciento Hisp. de la E-V desde 2000	68.71%	101.79%	8.69%	-1.79%	15.03%

Fuente: Archivo de Resumen de los Datos de la Nueva División de Distritos (Ley Pública 94-171) del Censo 2010, Arizona

Tabulación: Research Advisory Services, Inc., Phoenix, AZ (602) 230-9580

Composición de Raza y Origen de los Actuales Distritos de Colegios Comunitarios del Condado de Gila



Fuente: Archivo de Resumen de los Datos de la Nueva División de Distritos (Ley Pública 94-171) del Censo 2010, Arizona

Welcome to the Online Redistricting Application
 (Information en Español) Open Guide Register Login

- Download and print out the PDF instruction guide.
- Register (no cost), or log on to your existing account.

Please register or log in to continue

 To create a new plan, name the plan with your initials and a two-digit number (i.e. DDE01), then click 'New'
 OR
 Open an earlier saved plan, select its name from the dropdown list.
- The map shows the current districts (red outlines) and areas that can be moved (dark grey outlines) to equalize district populations.

The Plan Statistics Table window can be rolled up and down as needed.

Use the mouse to hover over an area on the map to see its demographic data.

4. Select a district number to move areas

5. While holding down the Ctrl key and left mouse clicks, select potential areas to move into that district. As areas are selected, the table below accumulates the aggregate demographics of all selected areas.

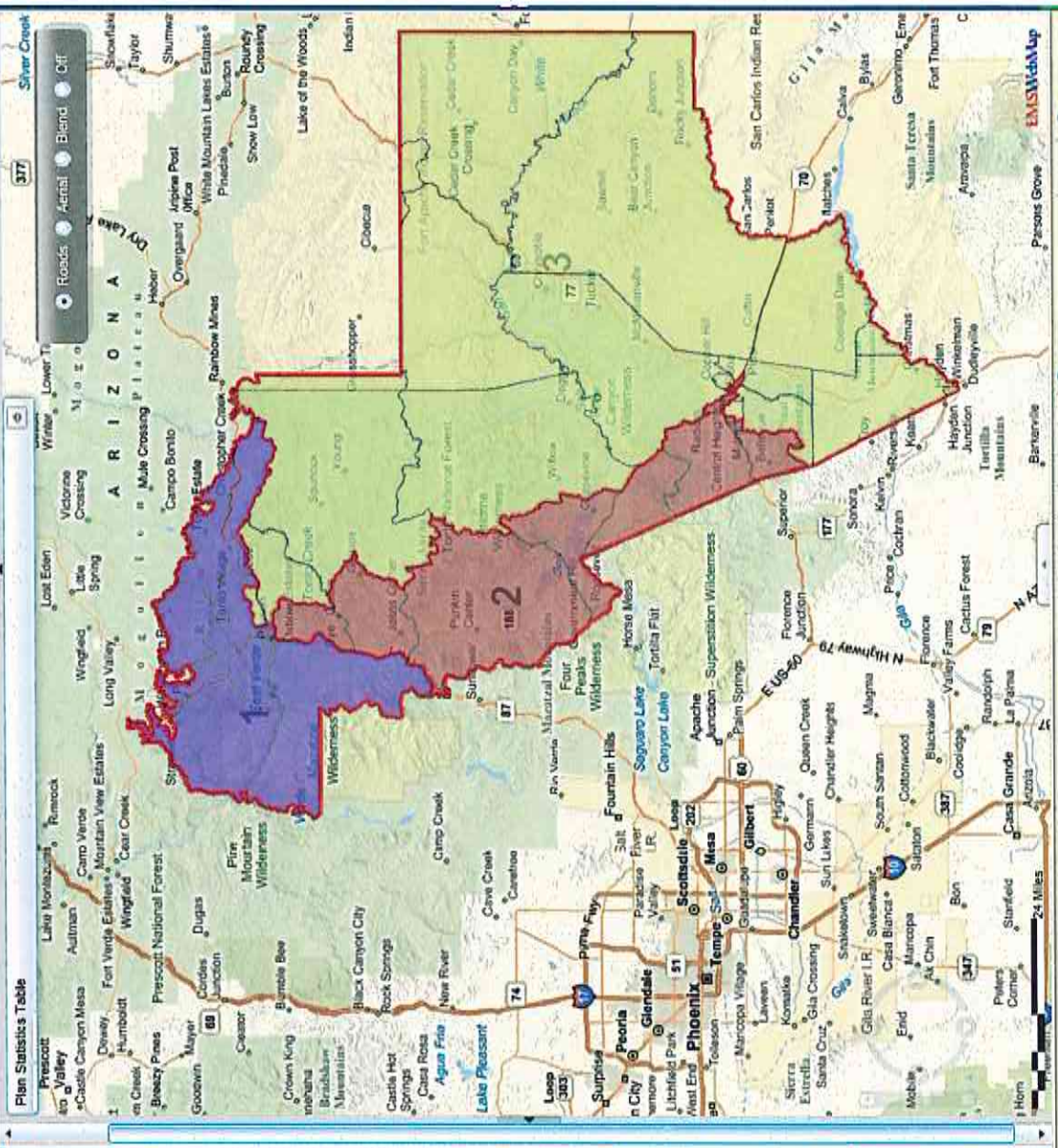
Demographics of selected areas	
Volting-Age Population (VA)	0
VA Hispanic %	0%
VA Non-Hispanic White %	0%
VA Non-Hispanic Black %	0%
VA Non-Hispanic Native-Am %	0%
VA Non-Hispanic Other Races %	0%
VA Total Minority %	0%
Total Voter Registration	0
Democratic %	0%
Republican %	0%
Indep. and Other %	0%

6. Press 'Move' to place the selected area into the target district.

Roll down the Plan Statistics Table window and observe that the affected columns have automatically updated to reflect the change. Repeat Steps 4, 5 and 6 as needed to complete your plan.

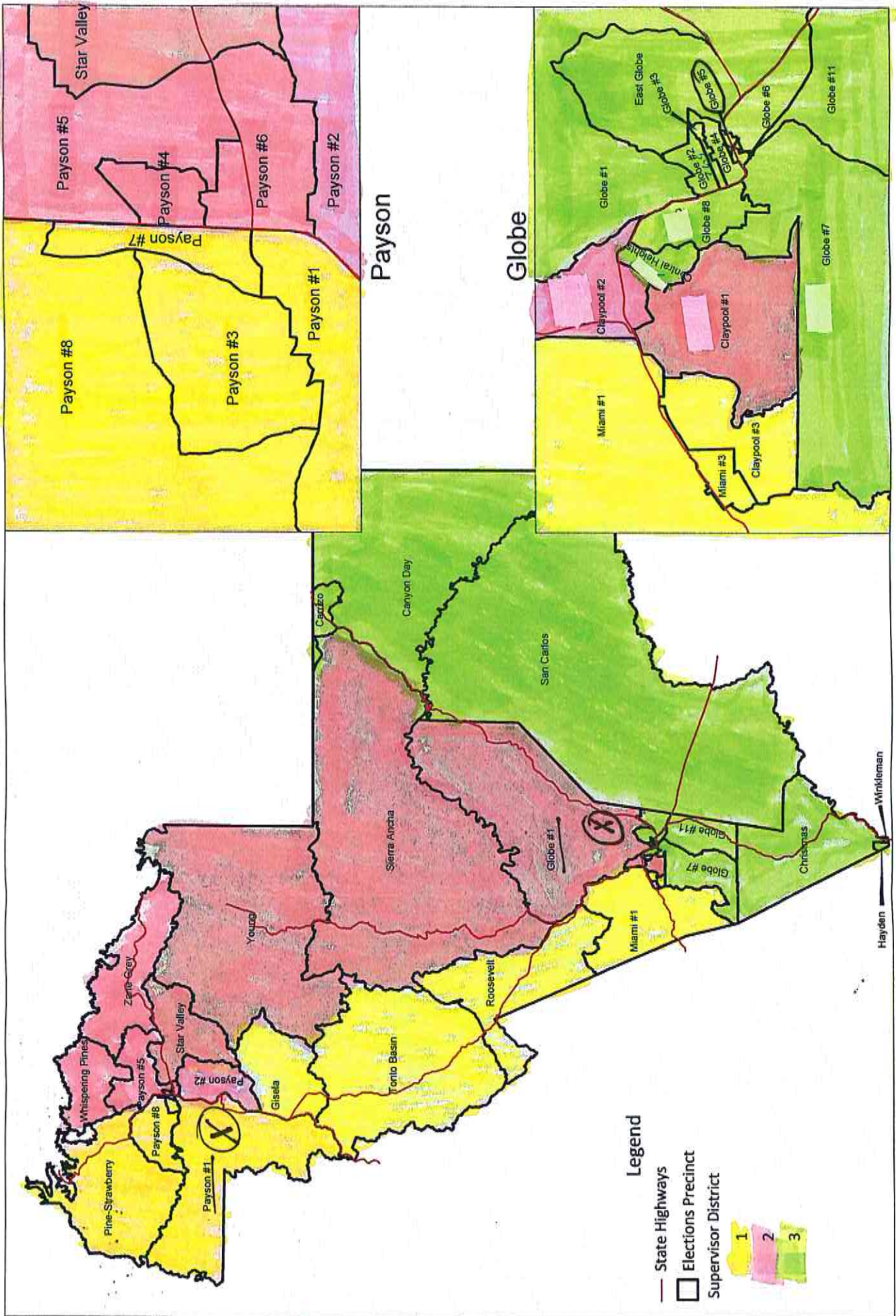
7. Save an uncompleted plan to work on later, or click 'Submit to officially enter your plan into the public record for consideration.

Move Clear Save Submit



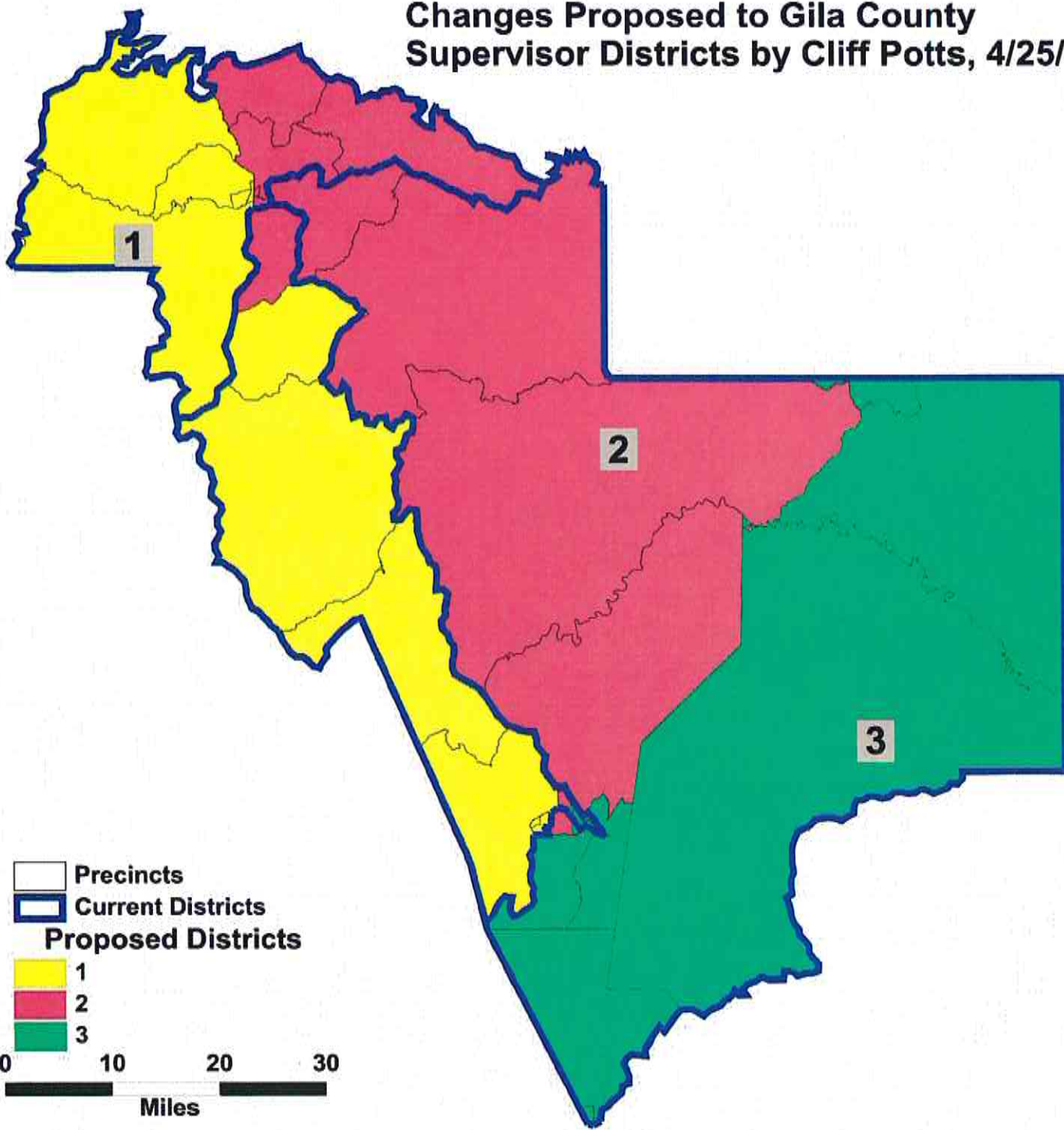
Interactive Mapping Tool Census Breakdown

Area	Population
Globe No. 1	1,170
Globe No. 2	769
Globe No. 3	365
Globe No. 4	954
Globe No. 5	304
Globe No. 6	1,815
East Globe Pt. A	231
East Globe Pt. B	1,032
Globe No. 7	891
Globe No. 8	1,096
San Carlos Pt. A - Res	4,825
San Carlos Pt. B - Res	463
Canyon Day - Res	1,549
Globe No. 11	1,222
Miami No. 1 Pt. A	665
Miami No. 1 Pt. B	197
Miami No. 3	1,290
Claypool No. 3	1,111
Central Heights	974
Claypool No. 1	1,611
Claypool No. 2 Pt. A	953
Claypool No. 2 Pt. B	920
Hayden	662
Winkelman	353
Christmas Pt. A	325
Christmas Pt. B - Res	-
Roosevelt Pt. A	250
Roosevelt Pt. B	104
Sierra Ancha Pt. A	286
Sierra Ancha Pt. B - Res	2
Tonto Basin	1,634
Payson No. 1	2,430
Payson No. 2 Pt. A	2,744
Payson No. 2 Pt. B - Res	120
Payson No. 3	3,102
Payson No. 4	1,567
Payson No. 6	1,590
Payson No. 7	1,396
Payson No. 8	1,793
Payson No. 5	2,180
Star Valley Pt. A	1,580
Star Valley Pt. B	1,256
Whispering Pines	305
Zane Grey Pt. A	558
Zane Grey Pt. B	235
Gisela	886
Young Pt. A	756
Young Pt. B - Res	-
Pine/Strawberry Pt. A	2,209
Pine/Strawberry Pt. B	740
Carrizo - Res	127
TOTAL	53,597



Respectfully submitted Cliff Pote 4/25/11

Changes Proposed to Gila County Supervisor Districts by Cliff Potts, 4/25/11



**GILA COUNTY SUPERVISORIAL DISTRICTS
TOTAL POPULATION BY RACE AND HISPANIC ORIGIN
PLAN SUBMITTED BY: CLIFF POTTS, 4/25/11**

Number:	District 1	District 2	District 3	Total, All Districts
Hispanic, of any race	2,672	2,433	4,483	9,588
Non-Hispanic White	14,525	14,650	6,123	35,298
Non-Hispanic Black	88	78	82	248
Non-Hispanic American Indian	381	486	7,108	7,975
Non-Hispanic Asian	86	122	113	321
Non-Hispanic Hawaiian	18	18	3	39
Non-Hispanic other race	24	27	15	66
Non-Hispanic two or more races	13	19	30	62
Total Population	17,807	17,833	17,957	53,597
Percent:				
Hispanic, of any race	15.01%	13.64%	24.97%	17.89%
Non-Hispanic White	81.57%	82.15%	34.10%	65.86%
Non-Hispanic Black	0.49%	0.44%	0.46%	0.46%
Non-Hispanic American Indian	2.14%	2.73%	39.58%	14.88%
Non-Hispanic Asian	0.48%	0.68%	0.63%	0.60%
Non-Hispanic Hawaiian	0.10%	0.10%	0.02%	0.07%
Non-Hispanic other race	0.13%	0.15%	0.08%	0.12%
Non-Hispanic two or more races	0.07%	0.11%	0.17%	0.12%
Total Percent	100.00%	100.00%	100.00%	100.00%
Ideal Population	17,866	17,866	17,866	Total
Total Population	17,807	17,833	17,957	deviation:
Numeric deviation from Ideal Value	-59	-33	91	150
Percent deviation from Ideal Value	-0.33%	-0.18%	0.51%	0.84%

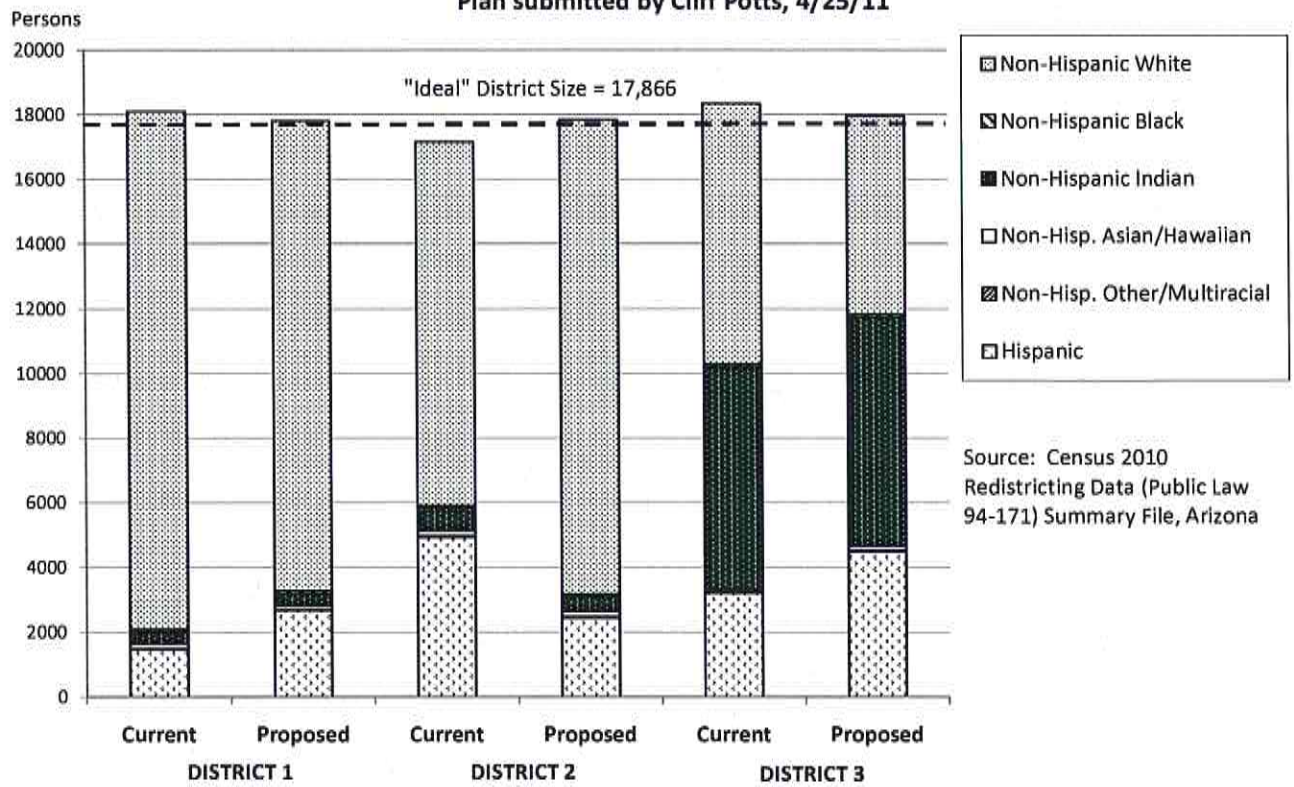
Source: Census 2010 Redistricting Data (Public Law 94-171) Summary file, Arizona
 Tabulation: Research Advisory Services, Inc., Phoenix AZ (602) 230-9580

**GILA COUNTY SUPERVISORIAL DISTRICTS
VOTING-AGE POPULATION BY RACE AND HISPANIC ORIGIN
PLAN SUBMITTED BY: CLIFF POTTS, 4/25/11**

<u>Voting-Age Number:</u>	<u>District 1</u>	<u>District 2</u>	<u>District 3</u>	<u>Total, All Districts</u>
Hispanic, of any race	1,823	1,592	3,104	6,519
Non-Hispanic White	12,541	12,311	5,070	29,922
Non-Hispanic Black	61	37	73	171
Non-Hispanic American Indian	278	347	4,520	5,145
Non-Hispanic Asian	68	93	91	252
Non-Hispanic Hawaiian	13	15	2	30
Non-Hispanic other race	13	19	12	44
Non-Hispanic two or more races	11	15	17	43
<i>Voting-Age Population</i>	14,808	14,429	12,889	42,126
<u>Voting-Age Percent:</u>				
Hispanic, of any race	12.31%	11.03%	24.08%	15.48%
Non-Hispanic White	84.69%	85.32%	39.34%	71.03%
Non-Hispanic Black	0.41%	0.26%	0.57%	0.41%
Non-Hispanic American Indian	1.88%	2.40%	35.07%	12.21%
Non-Hispanic Asian	0.46%	0.64%	0.71%	0.60%
Non-Hispanic Hawaiian	0.09%	0.10%	0.02%	0.07%
Non-Hispanic other race	0.09%	0.13%	0.09%	0.10%
Non-Hispanic two or more races	0.07%	0.10%	0.13%	0.10%
<i>Voting-Age Percent</i>	100.00%	100.00%	100.00%	100.00%

Source: Census 2010 Redistricting Data (Public Law 94-171) Summary file, Arizona
 Tabulation: Research Advisory Services, Inc., Phoenix AZ (602) 230-9580

Race and Origin Composition of Current and Proposed Gila County Supervisorial Districts
Plan submitted by Cliff Potts, 4/25/11



GILA COUNTY SUPERVISORIAL DISTRICTS
 PLAN SUBMITTED BY: CLIFF POTTS, 4/25/11

	Current	Proposed Plan	Change
Population, District 1	18,105	17,807	-298
Population, District 2	17,151	17,833	682
Population, District 3	18,341	17,957	-384
Population deviation, District 1	239	-59	
Population deviation, District 2	-715	-33	
Population deviation, District 3	475	91	
Percent deviation, District 1	1.34%	-0.33%	
Percent deviation, District 2	-4.00%	-0.18%	
Percent deviation, District 3	2.66%	0.51%	
Total plan deviation, number	1,190	150	
Total plan deviation, percent	6.66%	0.84%	
Percent voting-age Hispanic, District 1	6.23%	12.31%	6.08%
Percent voting-age Hispanic, District 2	24.88%	11.03%	-13.85%
Percent voting-age Hispanic, District 3	16.45%	24.08%	7.63%
Percent V-A Non-Hispanic Native American, District 1	1.75%	1.88%	0.13%
Percent V-A Non-Hispanic Native American, District 2	3.63%	2.40%	-1.23%
Percent V-A Non-Hispanic Native American, District 3	32.77%	35.07%	2.30%
Percent V-A Non-Hispanic Black, District 1	0.31%	0.41%	0.10%
Percent V-A Non-Hispanic Black, District 2	0.46%	0.26%	-0.20%
Percent V-A Non-Hispanic Black, District 3	0.46%	0.57%	0.11%
Percent voting-age total minority residents, District 1	9.13%	15.31%	6.18%
Percent voting-age total minority residents, District 2	30.16%	14.68%	-15.48%
Percent voting-age total minority residents, District 3	50.28%	60.66%	10.38%

Consultant's Review Comments:

- Very good observance of population equality. Overall plan deviation is kept below 1%.
- The drop in Hispanic proportion in District 2 is problematic. Combined with other minority residents in current District 2, at 30.16%, minorities may have been in sufficient proportion to influence the outcome of elections. The proposed plan, however, cuts the Hispanic and aggregate minority proportions in half. Unfortunately, this proposal would likely be deemed retrogressive under the Voting Rights Act.

-- The proposed plan, draws Supervisor Pastor and Supervisor Dawson out of their Districts, which is problematic given the Gila County Redistricting Principle ...

GILA COUNTY REDISTRICTING ADVISORY COMMITTEE

CALL TO THE PUBLIC SPEAKER FORM

Thank you for attending today's Redistricting Advisory Committee Meeting

During the "Call to the Public" on today's agenda, the public may comment during regularly scheduled meetings of the Committee. The Chair will conduct a Call to the Public to accept comments from the public at the end of the meeting, although the Committee reserves the right to modify the order of any item on the agenda including the Call to the Public.

Citizens who wish to address the public body need not request permission in advance. In order for the record to properly reflect the speaker's name, address and subject matter, please complete the information below and submit it to the Committee.

Speakers will be limited to three (3) minutes each and the Committee reserves the right to limit the length of the Public Comment period.

Committee members may not discuss items that are not specifically identified on the agenda. Therefore, pursuant to ARS §38-431.01(G), action taken as a result of public comment will be limited to directing staff to study the matter, responding to criticism, or scheduling the matter for further discussion and decision at a future date.

Date _____ Your Name _____

Your mailing address _____

Your e-mail address _____

Your phone number _____

Brief description of the subject to be addressed:

COMISIÓN CONSULTIVA DE DELIMITACIÓN DEL CONDADO DE GILA

FORMULARIO PARA COMENTARIO PÚBLICO

Gracias por asistir esta reunión de la Comisión Consultiva de Delimitación (el Comité).

Durante el tiempo que se permite en el orden del día para la "Llamada al Público," personas en el público pueden comentar durante las reuniones regulares del Comité. El Presidente del Comité realizará una llamada al público para aceptar comentarios del público al final de la reunión, aunque el Comité reserva el derecho de modificar el orden de cualquier tema en el programa, incluyendo la Llamada al Público.

Los ciudadanos que desean dirigirse a la entidad pública no necesitan solicitar permiso de antemano. Para que el registro refleje correctamente el nombre, la dirección y la materia, favor de completar la información que se pide abajo y entregar este formulario al Comité.

Oradores estarán limitados a tres (3) minutos cada uno y el Comité se reserva el derecho de limitar la duración del periodo de comentarios públicos.

Miembros del Comité no pueden debatir temas que no son específicamente identificados en el orden del día. Por lo tanto, conforme a ARS §38-431.01(G), las medidas adoptadas como resultado del comentario público se limitarán a dirigir personal para investigar el asunto, responder a las críticas, o a programar el asunto para el debate y decisión en una fecha futura.

Fecha _____ Su Nombre _____

Su Dirección Postal _____

Su Dirección de Correo Electrónico (Email) _____

Su Número de Teléfono _____

Las preguntas o una descripción breve de la materia que se tratará:
