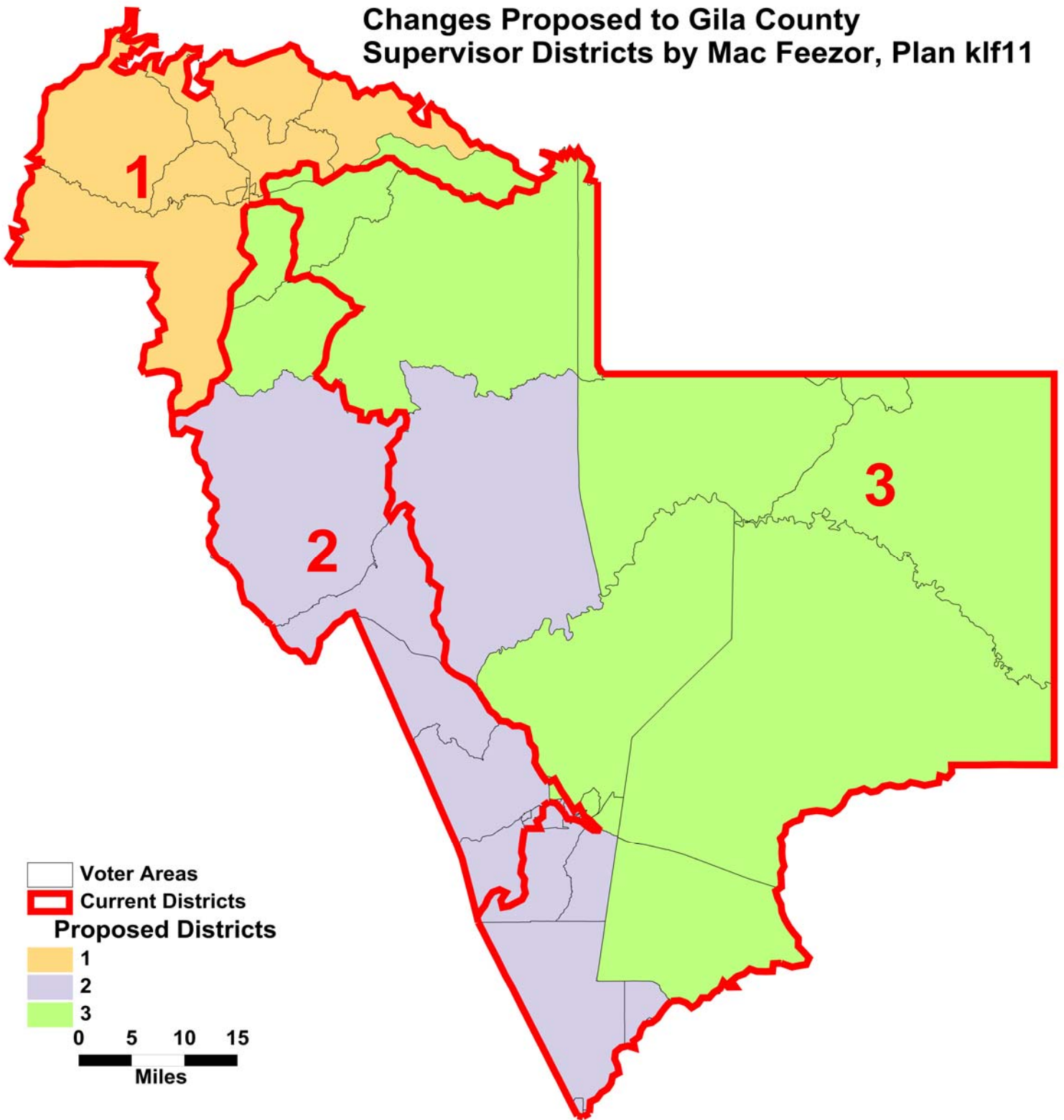


Changes Proposed to Gila County Supervisor Districts by Mac Feezor, Plan klf11



**GILA COUNTY SUPERVISORIAL DISTRICTS
TOTAL POPULATION BY RACE AND HISPANIC ORIGIN
PLAN SUBMITTED BY: MAC FEEZOR PLAN KLF11**

<u>Number:</u>	<u>District 1</u>	<u>District 2</u>	<u>District 3</u>	<u>Total, All Districts</u>
Hispanic, of any race	1,463	6,261	1,864	9,588
Non-Hispanic White	15,799	10,604	8,895	35,298
Non-Hispanic Black	83	94	71	248
Non-Hispanic American Indian	356	661	6,958	7,975
Non-Hispanic Asian	114	124	83	321
Non-Hispanic Hawaiian	22	5	12	39
Non-Hispanic other race	20	26	20	66
Non-Hispanic two or more races	13	23	26	62
Total Population	17,870	17,798	17,929	53,597
<u>Percent:</u>				
Hispanic, of any race	8.19%	35.18%	10.40%	17.89%
Non-Hispanic White	88.41%	59.58%	49.61%	65.86%
Non-Hispanic Black	0.46%	0.53%	0.40%	0.46%
Non-Hispanic American Indian	1.99%	3.71%	38.81%	14.88%
Non-Hispanic Asian	0.64%	0.70%	0.46%	0.60%
Non-Hispanic Hawaiian	0.12%	0.03%	0.07%	0.07%
Non-Hispanic other race	0.11%	0.15%	0.11%	0.12%
Non-Hispanic two or more races	0.07%	0.13%	0.15%	0.12%
Total Percent	100.00%	100.00%	100.00%	100.00%
Ideal Population	17,866	17,866	17,866	Total deviation: 131 0.73%
Total Population	17,870	17,798	17,929	
Numeric deviation from Ideal Value	4	-68	63	
Percent deviation from Ideal Value	0.02%	-0.38%	0.35%	

Source: Census 2010 Redistricting Data (Public Law 94-171) Summary file, Arizona
 Tabulation: Research Advisory Services, Inc., Phoenix AZ (602) 230-9580

**GILA COUNTY SUPERVISORIAL DISTRICTS
VOTING-AGE POPULATION BY RACE AND HISPANIC ORIGIN
PLAN SUBMITTED BY: MAC FEEZOR PLAN KLF11**

<u>Voting-Age Number:</u>	<u>District 1</u>	<u>District 2</u>	<u>District 3</u>	<u>Total, All Districts</u>
Hispanic, of any race	943	4,389	1,187	6,519
Non-Hispanic White	13,601	8,859	7,462	29,922
Non-Hispanic Black	46	70	55	171
Non-Hispanic American Indian	265	449	4,431	5,145
Non-Hispanic Asian	90	98	64	252
Non-Hispanic Hawaiian	17	3	10	30
Non-Hispanic other race	9	18	17	44
Non-Hispanic two or more races	11	15	17	43
<i>Voting-Age Population</i>	14,982	13,901	13,243	42,126
<u>Voting-Age Percent:</u>				
Hispanic, of any race	6.29%	31.57%	8.96%	15.48%
Non-Hispanic White	90.78%	63.73%	56.35%	71.03%
Non-Hispanic Black	0.31%	0.50%	0.42%	0.41%
Non-Hispanic American Indian	1.77%	3.23%	33.46%	12.21%
Non-Hispanic Asian	0.60%	0.70%	0.48%	0.60%
Non-Hispanic Hawaiian	0.11%	0.02%	0.08%	0.07%
Non-Hispanic other race	0.06%	0.13%	0.13%	0.10%
Non-Hispanic two or more races	0.07%	0.11%	0.13%	0.10%
<i>Voting-Age Percent</i>	100.00%	100.00%	100.00%	100.00%

Source: Census 2010 Redistricting Data (Public Law 94-171) Summary file, Arizona

Tabulation: Research Advisory Services, Inc., Phoenix AZ (602) 230-9580

Race and Origin Composition of Current and Proposed Gila County Supervisory Districts

Plan submitted by: Mac Feezor, Plan KLF11

Persons

20000

18000

16000

14000

12000

10000

8000

6000

4000

2000

0

"Ideal" District Size = 17,866

- Non-Hispanic White
- Non-Hispanic Black
- Non-Hispanic Indian
- Non-Hisp. Asian/Hawaiian
- Non-Hisp. Other/Multiracial
- Hispanic

Source: Census 2010
Redistricting Data (Public
Law 94-171) Summary File,
Arizona

Current

Proposed

Current

Proposed

Current

Proposed

DISTRICT 1

DISTRICT 2

DISTRICT 3



**GILA COUNTY SUPERVISORIAL DISTRICTS
PLAN SUBMITTED BY: MAC FEEZOR PLAN KLF11**

	Current	Proposed Plan	Change
Population, District 1	18,105	17,870	-235
Population, District 2	17,151	17,798	647
Population, District 3	18,341	17,929	-412
Population deviation, District 1	239	4	
Population deviation, District 2	-715	-68	
Population deviation, District 3	475	63	
Percent deviation, District 1	1.34%	0.02%	
Percent deviation, District 2	-4.00%	-0.38%	
Percent deviation, District 3	2.66%	0.35%	
Total plan deviation, number	1,190	131	
Total plan deviation, percent	6.66%	0.73%	
Percent voting-age Hispanic, District 1	6.23%	6.29%	0.06%
Percent voting-age Hispanic, District 2	24.88%	31.57%	6.69%
Percent voting-age Hispanic, District 3	16.45%	8.96%	-7.49%
Percent V-A Non-Hispanic Native American, District 1	1.75%	1.77%	0.02%
Percent V-A Non-Hispanic Native American, District 2	3.63%	3.23%	-0.40%
Percent V-A Non-Hispanic Native American, District 3	32.77%	33.46%	0.69%
Percent V-A Non-Hispanic Black, District 1	0.31%	0.31%	0.00%
Percent V-A Non-Hispanic Black, District 2	0.46%	0.50%	0.04%
Percent V-A Non-Hispanic Black, District 3	0.46%	0.42%	-0.04%
Percent voting-age total minority residents, District 1	9.13%	9.22%	0.09%
Percent voting-age total minority residents, District 2	30.16%	36.27%	6.11%
Percent voting-age total minority residents, District 3	50.28%	43.65%	-6.63%

Consultant's Review Comments:

This proposed plan reduces district population deviations to less than one percent, compared with the current deviation of over six percent.

The voting-age minority proportion in District 2 rises about six percent under this plan. However, the voting-age minority proportion in District 3 falls by about that same amount; a change that will be viewed as retrogressive under the Voting Rights Act.