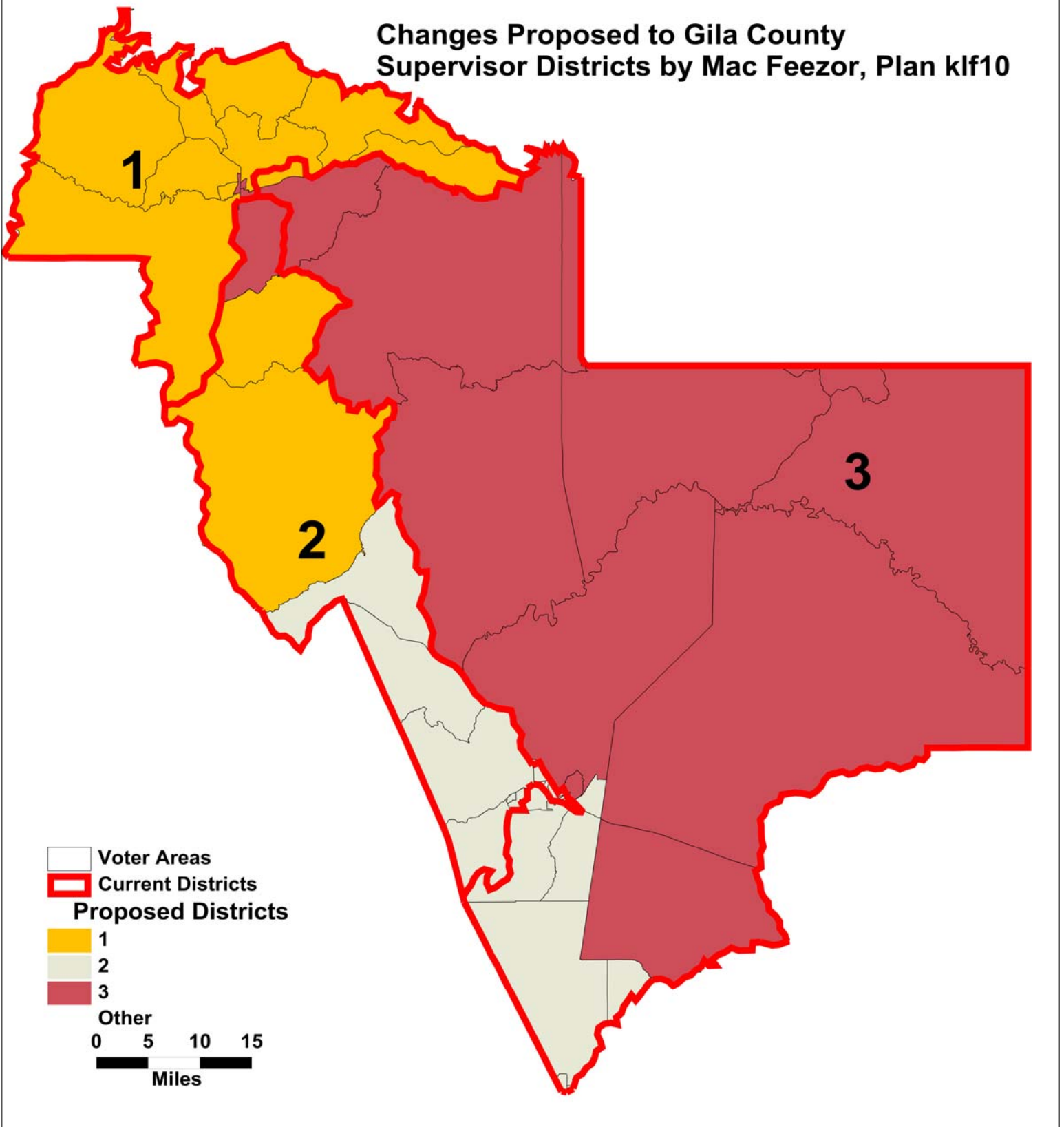


Changes Proposed to Gila County Supervisor Districts by Mac Feezor, Plan klf10



**GILA COUNTY SUPERVISORIAL DISTRICTS
TOTAL POPULATION BY RACE AND HISPANIC ORIGIN
PLAN SUBMITTED BY: MacFeezor KLF10**

<u>Number:</u>	<u>District 1</u>	<u>District 2</u>	<u>District 3</u>	<u>Total, All Districts</u>
Hispanic, of any race	1,332	6,847	1,409	9,588
Non-Hispanic White	15,779	9,977	9,542	35,298
Non-Hispanic Black	80	123	45	248
Non-Hispanic American Indian	302	711	6,962	7,975
Non-Hispanic Asian	97	143	81	321
Non-Hispanic Hawaiian	23	10	6	39
Non-Hispanic other race	22	30	14	66
Non-Hispanic two or more races	17	22	23	62
Total Population	17,652	17,863	18,082	53,597
<u>Percent:</u>				
Hispanic, of any race	7.55%	38.33%	7.79%	17.89%
Non-Hispanic White	89.39%	55.85%	52.77%	65.86%
Non-Hispanic Black	0.45%	0.69%	0.25%	0.46%
Non-Hispanic American Indian	1.71%	3.98%	38.50%	14.88%
Non-Hispanic Asian	0.55%	0.80%	0.45%	0.60%
Non-Hispanic Hawaiian	0.13%	0.06%	0.03%	0.07%
Non-Hispanic other race	0.12%	0.17%	0.08%	0.12%
Non-Hispanic two or more races	0.10%	0.12%	0.13%	0.12%
Total Percent	100.00%	100.00%	100.00%	100.00%
Ideal Population	17,866	17,866	17,866	Total deviation: 430 2.41%
Total Population	17,652	17,863	18,082	
Numeric deviation from Ideal Value	-214	-3	216	
Percent deviation from Ideal Value	-1.20%	-0.01%	1.21%	

Source: Census 2010 Redistricting Data (Public Law 94-171) Summary file, Arizona
 Tabulation: Research Advisory Services, Inc., Phoenix AZ (602) 230-9580

**GILA COUNTY SUPERVISORIAL DISTRICTS
VOTING-AGE POPULATION BY RACE AND HISPANIC ORIGIN
PLAN SUBMITTED BY: MacFeezor KLF10**

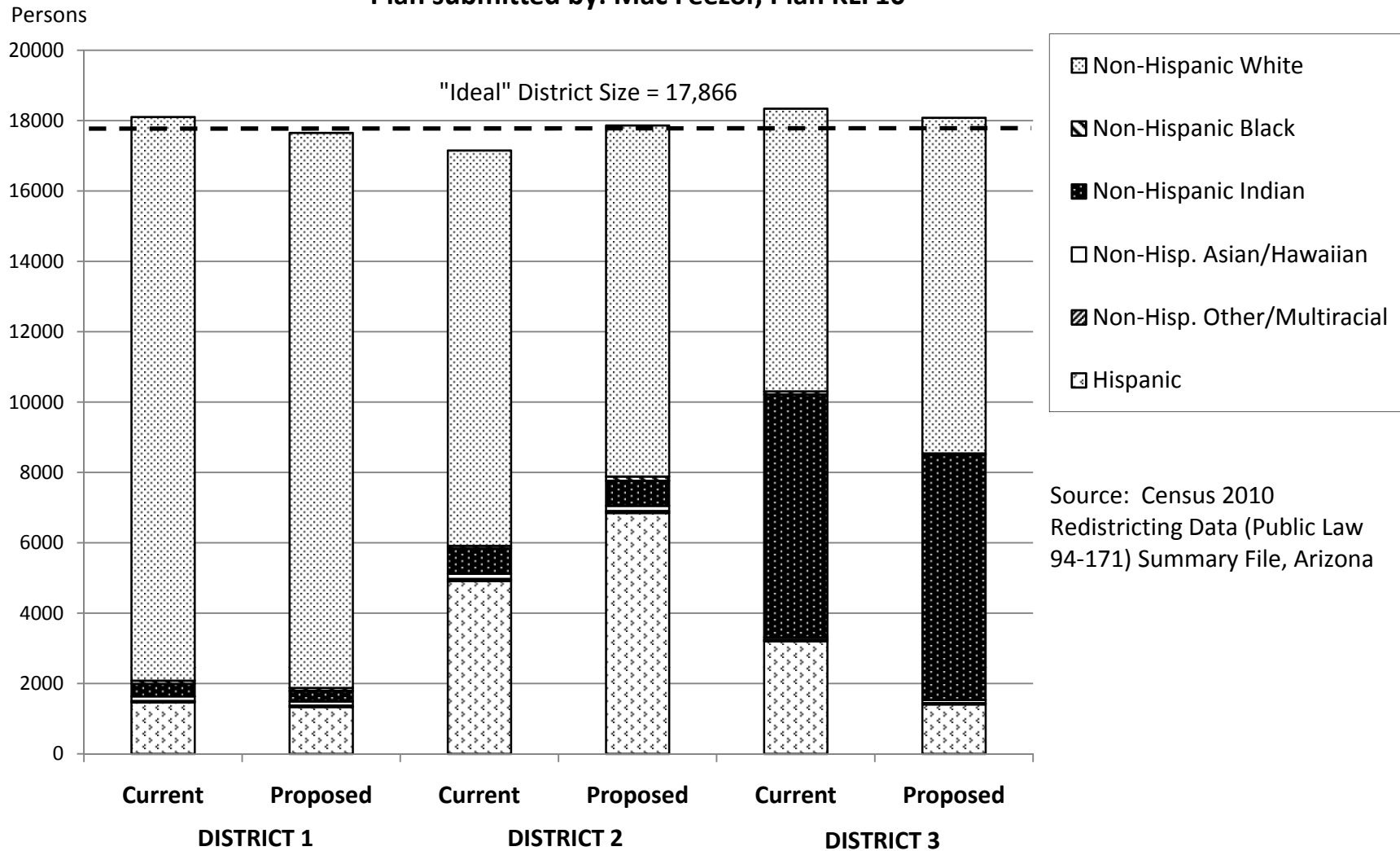
<u>Voting-Age Number:</u>	<u>District 1</u>	<u>District 2</u>	<u>District 3</u>	<u>Total, All Districts</u>
Hispanic, of any race	852	4,788	879	6,519
Non-Hispanic White	13,748	8,174	8,000	29,922
Non-Hispanic Black	52	95	24	171
Non-Hispanic American Indian	236	477	4,432	5,145
Non-Hispanic Asian	76	112	64	252
Non-Hispanic Hawaiian	18	7	5	30
Non-Hispanic other race	10	22	12	44
Non-Hispanic two or more races	13	14	16	43
<i>Voting-Age Population</i>	13,005	13,689	13,432	42,126
<u>Voting-Age Percent:</u>				
Hispanic, of any race	5.68%	34.98%	6.54%	15.48%
Non-Hispanic White	91.62%	59.71%	59.56%	71.03%
Non-Hispanic Black	0.35%	0.69%	0.18%	0.41%
Non-Hispanic American Indian	1.57%	3.48%	33.00%	12.21%
Non-Hispanic Asian	0.51%	0.82%	0.48%	0.60%
Non-Hispanic Hawaiian	0.12%	0.05%	0.04%	0.07%
Non-Hispanic other race	0.07%	0.16%	0.09%	0.10%
Non-Hispanic two or more races	0.09%	0.10%	0.12%	0.10%
<i>Voting-Age Percent</i>	100.00%	100.00%	100.00%	100.00%

Source: Census 2010 Redistricting Data (Public Law 94-171) Summary file, Arizona

Tabulation: Research Advisory Services, Inc., Phoenix AZ (602) 230-9580

Race and Origin Composition of Current and Proposed Gila County Supervisorial Districts

Plan submitted by: Mac Feezor, Plan KLF10



**GILA COUNTY SUPERVISORIAL DISTRICTS
PLAN SUBMITTED BY: MacFeezor KLF10**

	Current	Proposed Plan	Change
Population, District 1	18,105	17,652	-453
Population, District 2	17,151	17,863	712
Population, District 3	18,341	18,082	-259
Population deviation, District 1	239	-214	
Population deviation, District 2	-715	-3	
Population deviation, District 3	475	216	
Percent deviation, District 1	1.34%	-1.20%	
Percent deviation, District 2	-4.00%	-0.01%	
Percent deviation, District 3	2.66%	1.21%	
Total plan deviation, number	1,190	430	
Total plan deviation, percent	6.66%	2.41%	
Percent voting-age Hispanic, District 1	6.23%	5.68%	-0.55%
Percent voting-age Hispanic, District 2	24.88%	34.98%	10.10%
Percent voting-age Hispanic, District 3	16.45%	6.54%	-9.91%
Percent V-A Non-Hispanic Native American, District 1	1.75%	1.57%	-0.18%
Percent V-A Non-Hispanic Native American, District 2	3.63%	3.48%	-0.15%
Percent V-A Non-Hispanic Native American, District 3	32.77%	33.00%	0.23%
Percent V-A Non-Hispanic Black, District 1	0.31%	0.35%	0.04%
Percent V-A Non-Hispanic Black, District 2	0.46%	0.69%	0.23%
Percent V-A Non-Hispanic Black, District 3	0.46%	0.18%	-0.28%
Percent voting-age total minority residents, District 1	9.13%	8.38%	-0.75%
Percent voting-age total minority residents, District 2	30.16%	40.29%	10.13%
Percent voting-age total minority residents, District 3	50.28%	40.44%	-9.84%

Consultant's Review Comments:

This plan trims the total population down to 2.41%; about one-third of its current value.

The ten-percent increase in the voting-age minority proportion in District 2 is countered by almost as large a decrease in District 3 -- a retrogressive movement away from minority majority status.