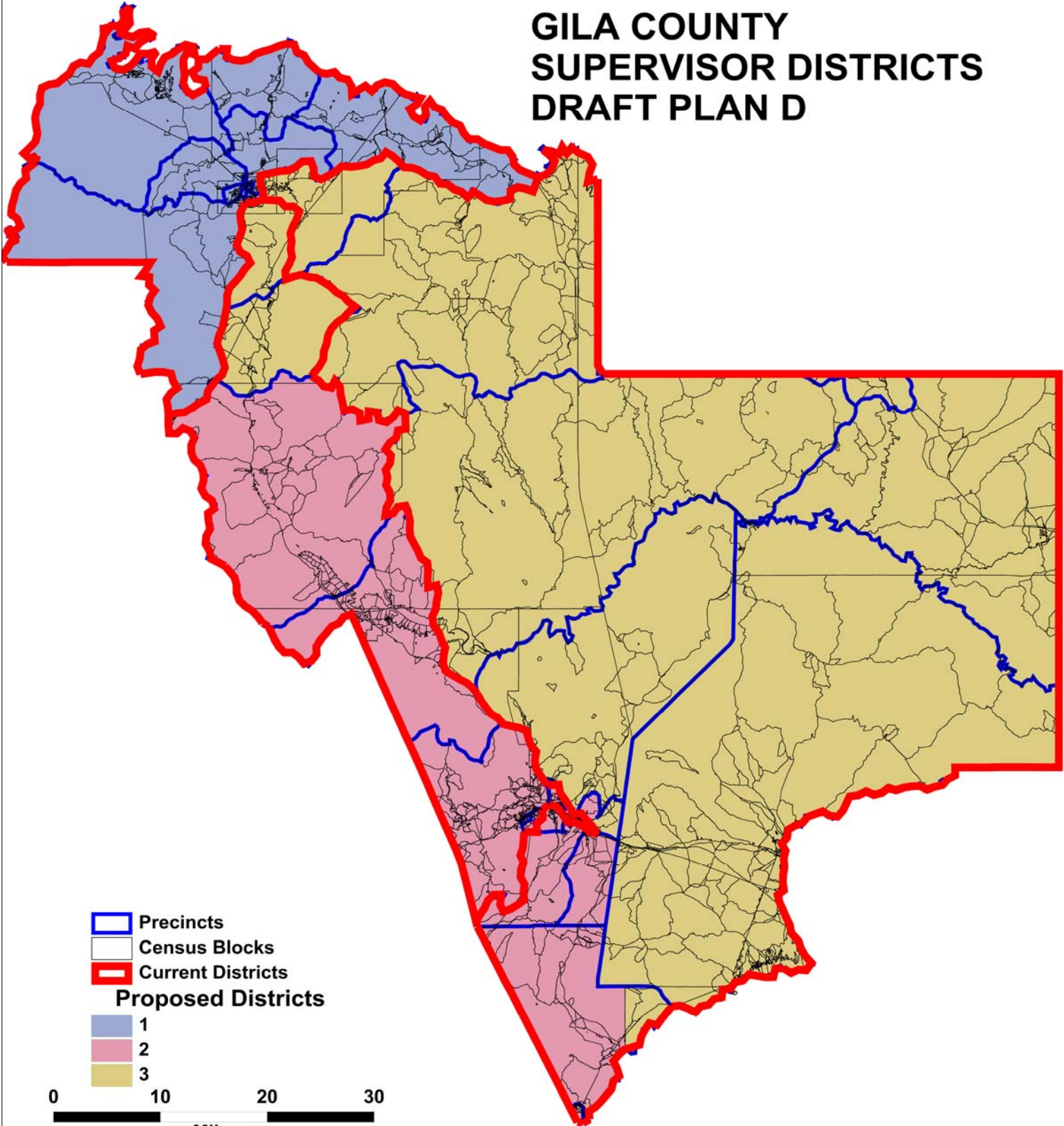






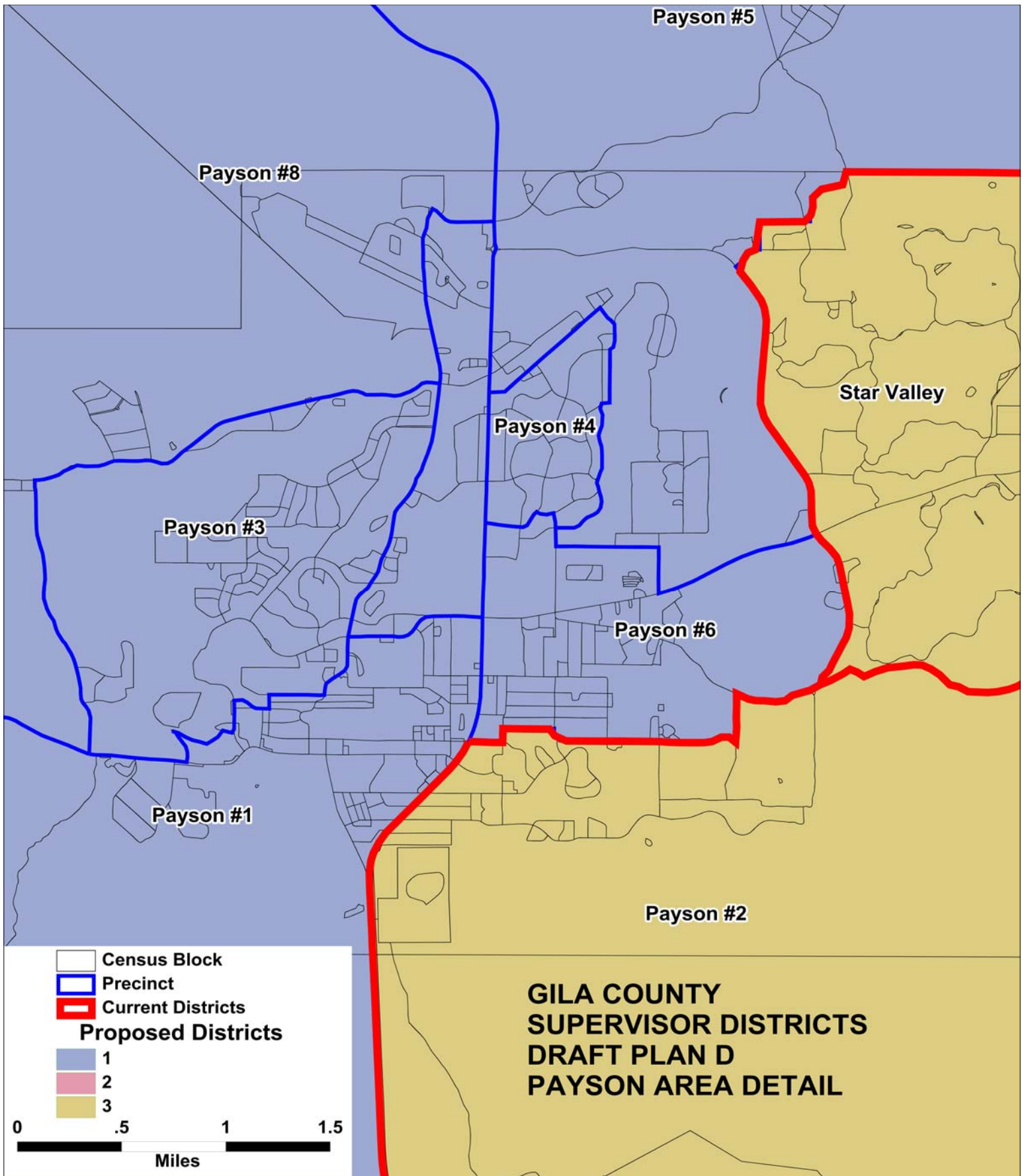


GILA COUNTY SUPERVISOR DISTRICTS DRAFT PLAN D

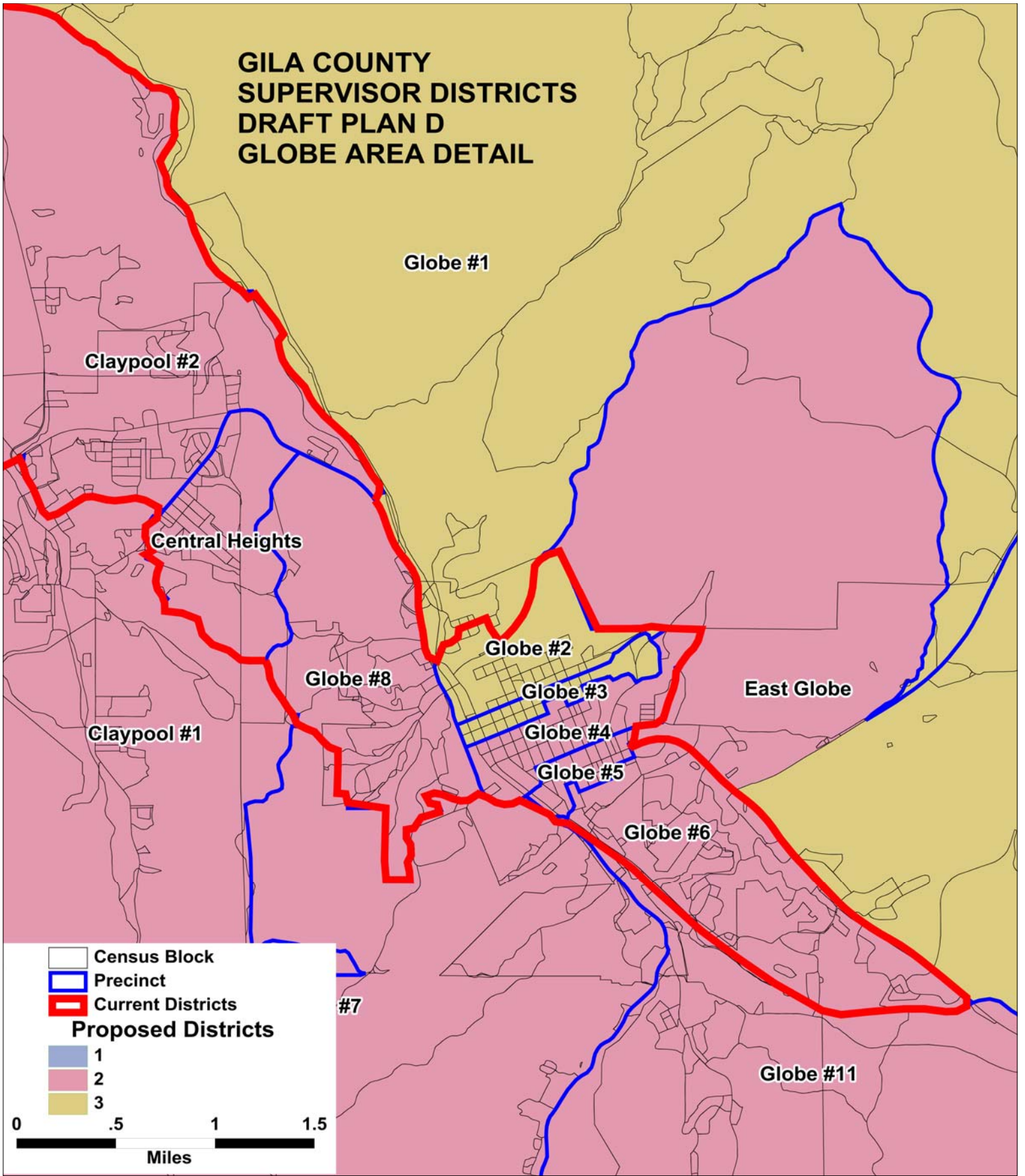


-  Precincts
-  Census Blocks
-  Current Districts
- Proposed Districts**
-  1
-  2
-  3

0 10 20 30
Miles



GILA COUNTY SUPERVISOR DISTRICTS DRAFT PLAN D GLOBE AREA DETAIL



**GILA COUNTY SUPERVISORIAL DISTRICTS
TOTAL POPULATION BY RACE AND HISPANIC ORIGIN
DRAFT PLAN D**

<u>Number:</u>	<u>District 1</u>	<u>District 2</u>	<u>District 3</u>	<u>Total, All Districts</u>
Hispanic, of any race	1,467	6,226	1,895	9,588
Non-Hispanic White	16,025	10,424	8,849	35,298
Non-Hispanic Black	87	96	65	248
Non-Hispanic American Indian	357	629	6,989	7,975
Non-Hispanic Asian	114	127	80	321
Non-Hispanic Hawaiian	22	11	6	39
Non-Hispanic other race	20	25	21	66
Non-Hispanic two or more races	13	24	25	62
Total Population	18,105	17,562	17,930	53,597
<u>Percent:</u>				
Hispanic, of any race	8.10%	35.45%	10.57%	17.89%
Non-Hispanic White	88.51%	59.36%	49.35%	65.86%
Non-Hispanic Black	0.48%	0.55%	0.36%	0.46%
Non-Hispanic American Indian	1.97%	3.58%	38.98%	14.88%
Non-Hispanic Asian	0.63%	0.72%	0.45%	0.60%
Non-Hispanic Hawaiian	0.12%	0.06%	0.03%	0.07%
Non-Hispanic other race	0.11%	0.14%	0.12%	0.12%
Non-Hispanic two or more races	0.07%	0.14%	0.14%	0.12%
Total Percent	100.00%	100.00%	100.00%	100.00%
Ideal Population	17,866	17,866	17,866	Total deviation: 543 3.04%
Total Population	18,105	17,562	17,930	
Numeric deviation from Ideal Value	239	-304	64	
Percent deviation from Ideal Value	1.34%	-1.70%	0.36%	

Source: Census 2010 Redistricting Data (Public Law 94-171) Summary file, Arizona
 Tabulation: Research Advisory Services, Inc., Phoenix AZ (602) 230-9580

**GILA COUNTY SUPERVISORIAL DISTRICTS
VOTING-AGE POPULATION BY RACE AND HISPANIC ORIGIN
DRAFT PLAN D**

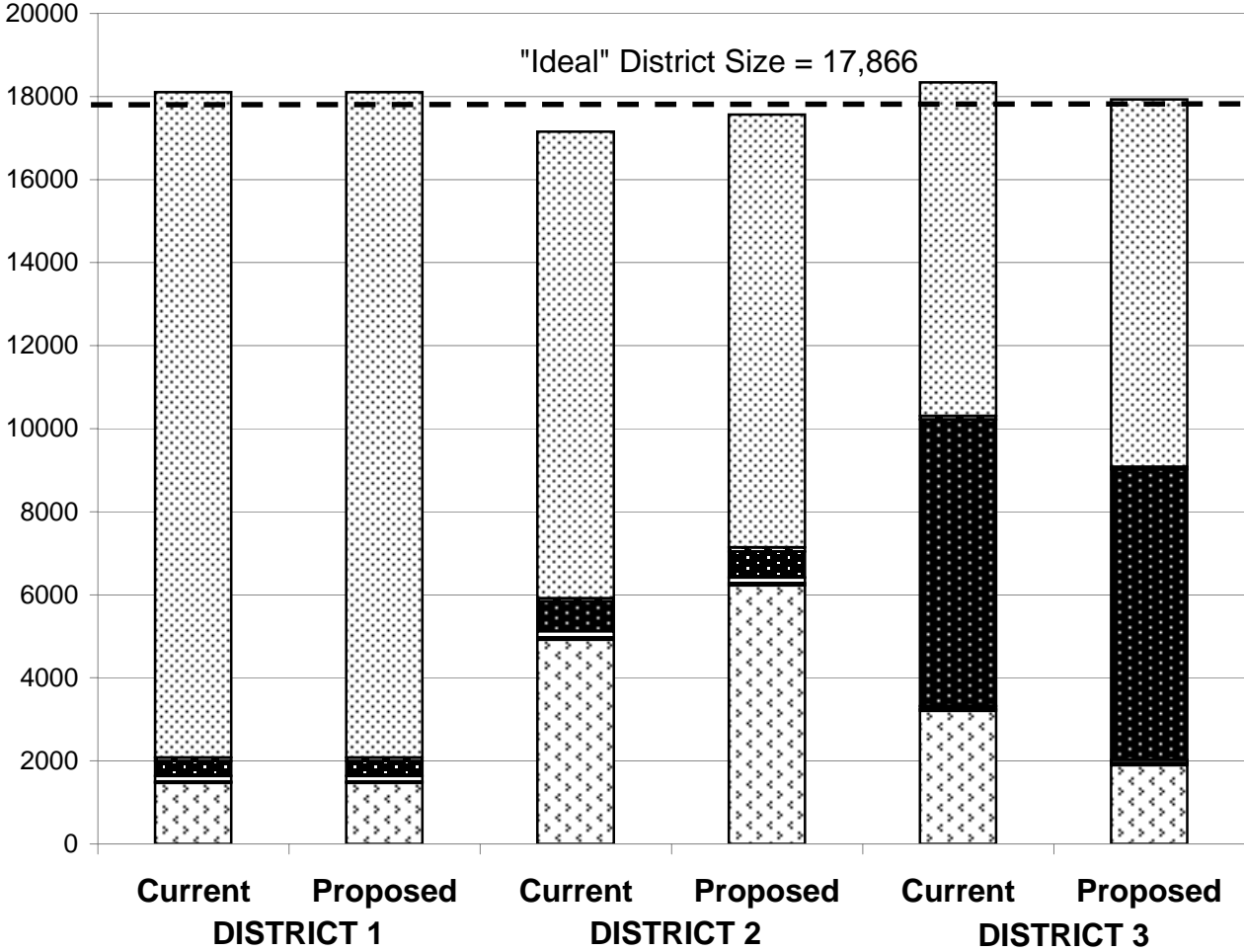
<u>Voting-Age Number:</u>	<u>District 1</u>	<u>District 2</u>	<u>District 3</u>	<u>Total, All Districts</u>
Hispanic, of any race	947	4,331	1,241	6,519
Non-Hispanic White	13,806	8,643	7,473	29,922
Non-Hispanic Black	47	69	55	171
Non-Hispanic American Indian	266	422	4,457	5,145
Non-Hispanic Asian	90	103	59	252
Non-Hispanic Hawaiian	17	8	5	30
Non-Hispanic other race	9	18	17	44
Non-Hispanic two or more races	11	16	16	43
<i>Voting-Age Population</i>	15,193	13,610	13,323	42,126
<u>Voting-Age Percent:</u>				
Hispanic, of any race	6.23%	31.82%	9.31%	15.48%
Non-Hispanic White	90.87%	63.50%	56.09%	71.03%
Non-Hispanic Black	0.31%	0.51%	0.41%	0.41%
Non-Hispanic American Indian	1.75%	3.10%	33.45%	12.21%
Non-Hispanic Asian	0.59%	0.76%	0.44%	0.60%
Non-Hispanic Hawaiian	0.11%	0.06%	0.04%	0.07%
Non-Hispanic other race	0.06%	0.13%	0.13%	0.10%
Non-Hispanic two or more races	0.07%	0.12%	0.12%	0.10%
<i>Voting-Age Percent</i>	100.00%	100.00%	100.00%	100.00%

Source: Census 2010 Redistricting Data (Public Law 94-171) Summary file, Arizona

Tabulation: Research Advisory Services, Inc., Phoenix AZ (602) 230-9580

**Race and Origin Composition of Current and Proposed Gila County
Supervisory Districts
DRAFT PLAN D**

Persons



- Non-Hispanic White
- Non-Hispanic Black
- Non-Hispanic Indian
- Non-Hisp. Asian/Hawaiian
- Non-Hisp. Other/Multiracial
- Hispanic

Source: Census 2010
Redistricting Data (Public
Law 94-171) Summary File,
Arizona

**GILA COUNTY SUPERVISORIAL DISTRICTS
DRAFT PLAN D**

	Current	Proposed Plan	Change
Population, District 1	18,105	18,105	0
Population, District 2	17,151	17,562	411
Population, District 3	18,341	17,930	-411
Population deviation, District 1	239	239	
Population deviation, District 2	-715	-304	
Population deviation, District 3	475	64	
Percent deviation, District 1	1.34%	1.34%	
Percent deviation, District 2	-4.00%	-1.70%	
Percent deviation, District 3	2.66%	0.36%	
Total plan deviation, number	1,190	543	
Total plan deviation, percent	6.66%	3.04%	
Percent voting-age Hispanic, District 1	6.23%	6.23%	0.00%
Percent voting-age Hispanic, District 2	24.88%	31.82%	6.94%
Percent voting-age Hispanic, District 3	16.45%	9.31%	-7.14%
Percent V-A Non-Hispanic Native American, District 1	1.75%	1.75%	0.00%
Percent V-A Non-Hispanic Native American, District 2	3.63%	3.10%	-0.53%
Percent V-A Non-Hispanic Native American, District 3	32.77%	33.45%	0.68%
Percent V-A Non-Hispanic Black, District 1	0.31%	0.31%	0.00%
Percent V-A Non-Hispanic Black, District 2	0.46%	0.51%	0.05%
Percent V-A Non-Hispanic Black, District 3	0.46%	0.41%	-0.05%
Percent voting-age total minority residents, District 1	9.13%	9.13%	0.00%
Percent voting-age total minority residents, District 2	30.16%	36.50%	6.34%
Percent voting-age total minority residents, District 3	50.28%	43.91%	-6.37%