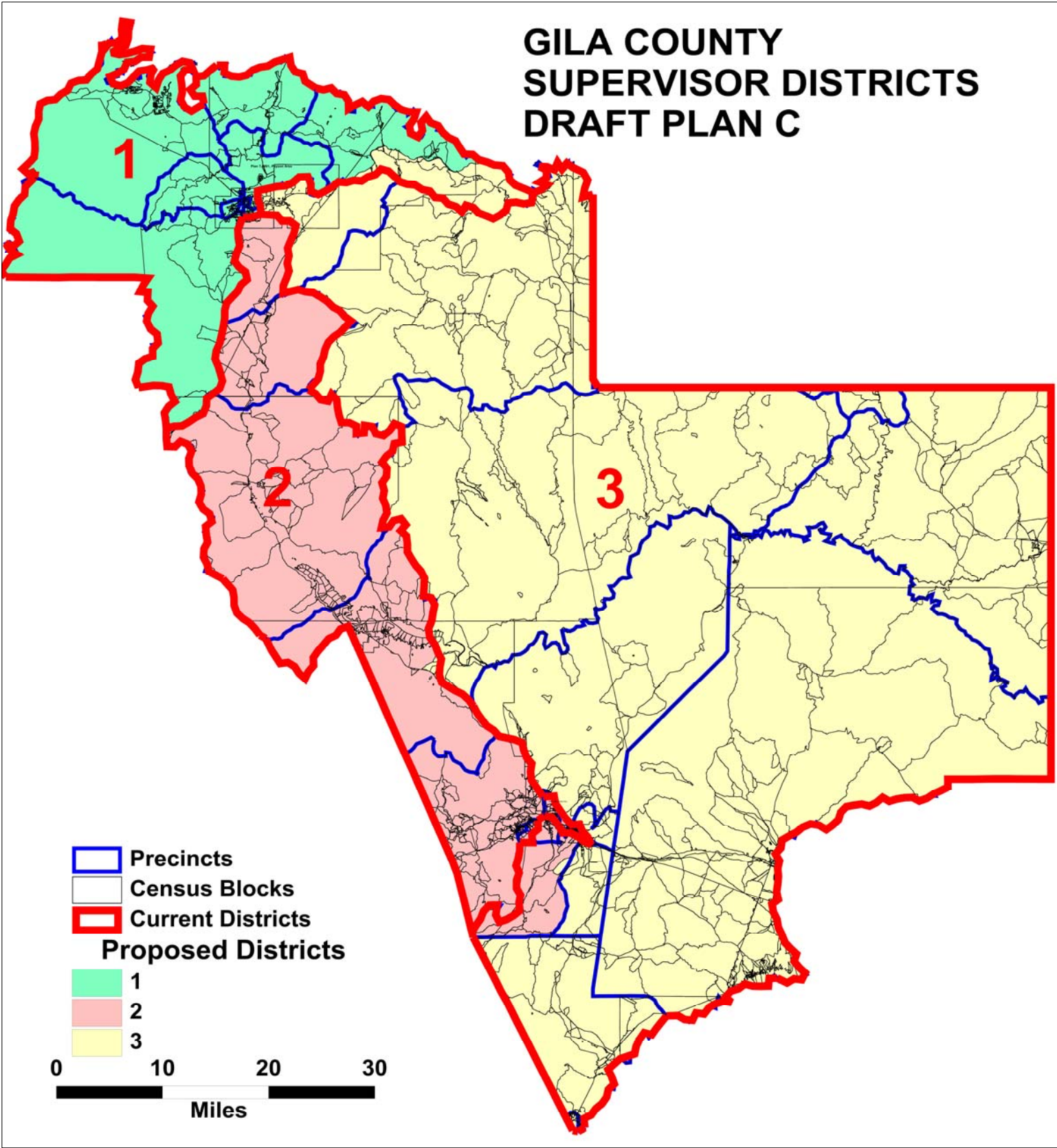


GILA COUNTY SUPERVISOR DISTRICTS DRAFT PLAN C



Pine-Strawberry

**GILA COUNTY
SUPERVISOR DISTRICTS
DRAFT PLAN C
PAYSON AREA DETAIL**

Payson #5

Payson #8

Payson #4



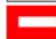

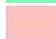
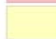
Star Valley

Payson #3

Payson #6

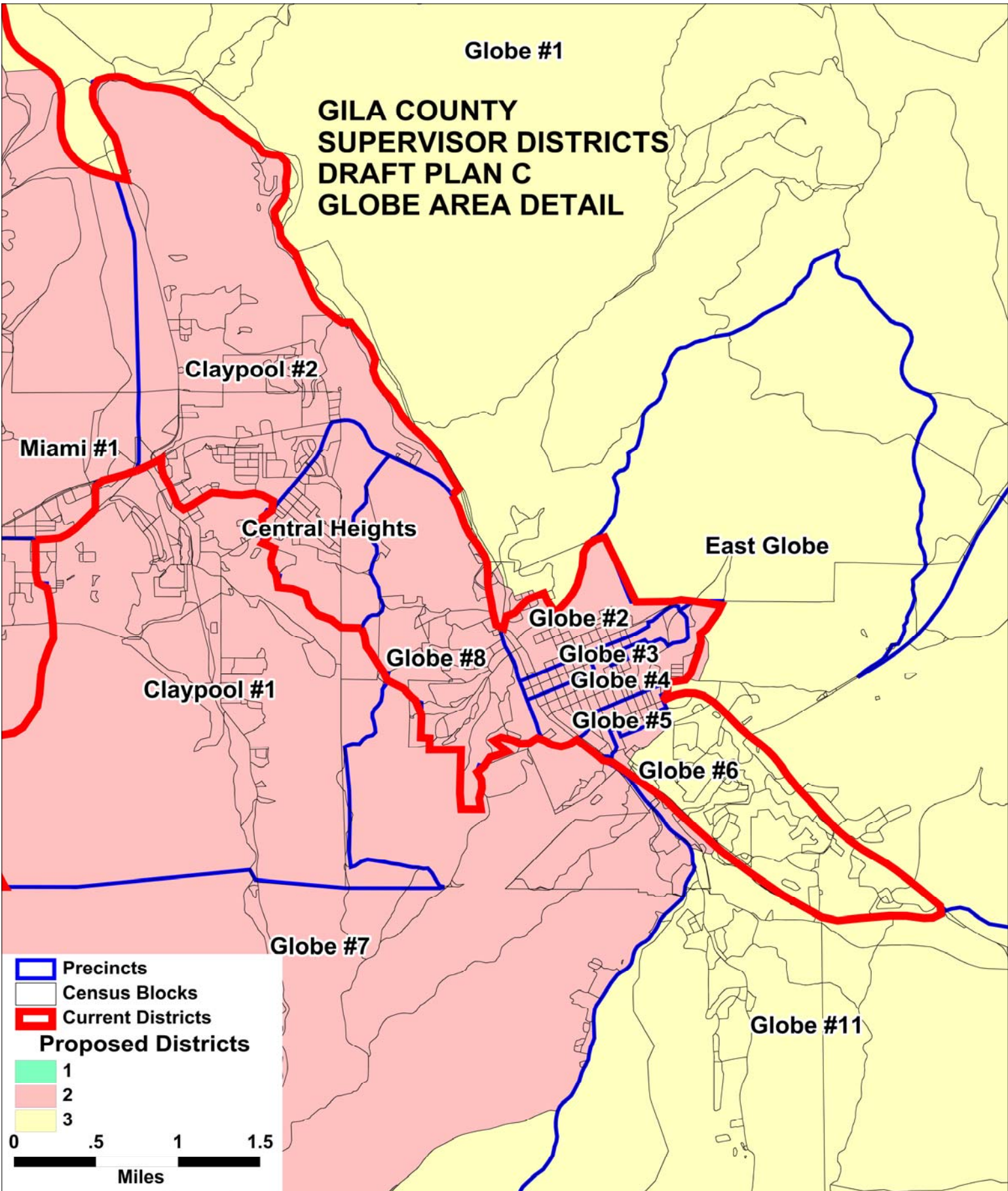
Payson #1

Payson #2

-  Precincts
-  Census Blocks
-  Current Districts
- Proposed Districts**
-  1
-  2
-  3



**GILA COUNTY
SUPERVISOR DISTRICTS
DRAFT PLAN C
GLOBE AREA DETAIL**



**GILA COUNTY SUPERVISORIAL DISTRICTS
TOTAL POPULATION BY RACE AND HISPANIC ORIGIN
DRAFT PLAN C**

<u>Number:</u>	<u>District 1</u>	<u>District 2</u>	<u>District 3</u>	<u>Total, All Districts</u>
Hispanic, of any race	1,463	5,178	2,947	9,588
Non-Hispanic White	15,799	11,807	7,692	35,298
Non-Hispanic Black	83	93	72	248
Non-Hispanic American Indian	356	686	6,933	7,975
Non-Hispanic Asian	114	128	79	321
Non-Hispanic Hawaiian	22	11	6	39
Non-Hispanic other race	20	31	15	66
Non-Hispanic two or more races	13	21	28	62
Total Population	17,870	17,955	17,772	53,597
<u>Percent:</u>				
Hispanic, of any race	8.19%	28.84%	16.58%	17.89%
Non-Hispanic White	88.41%	65.76%	43.28%	65.86%
Non-Hispanic Black	0.46%	0.52%	0.41%	0.46%
Non-Hispanic American Indian	1.99%	3.82%	39.01%	14.88%
Non-Hispanic Asian	0.64%	0.71%	0.44%	0.60%
Non-Hispanic Hawaiian	0.12%	0.06%	0.03%	0.07%
Non-Hispanic other race	0.11%	0.17%	0.08%	0.12%
Non-Hispanic two or more races	0.07%	0.12%	0.16%	0.12%
Total Percent	100.00%	100.00%	100.00%	100.00%
Ideal Population	17,866	17,866	17,866	Total deviation: 183 1.02%
Total Population	17,870	17,955	17,772	
Numeric deviation from Ideal Value	4	89	-94	
Percent deviation from Ideal Value	0.02%	0.50%	-0.52%	

Source: Census 2010 Redistricting Data (Public Law 94-171) Summary file, Arizona
 Tabulation: Research Advisory Services, Inc., Phoenix AZ (602) 230-9580

**GILA COUNTY SUPERVISORIAL DISTRICTS
VOTING-AGE POPULATION BY RACE AND HISPANIC ORIGIN
DRAFT PLAN C**

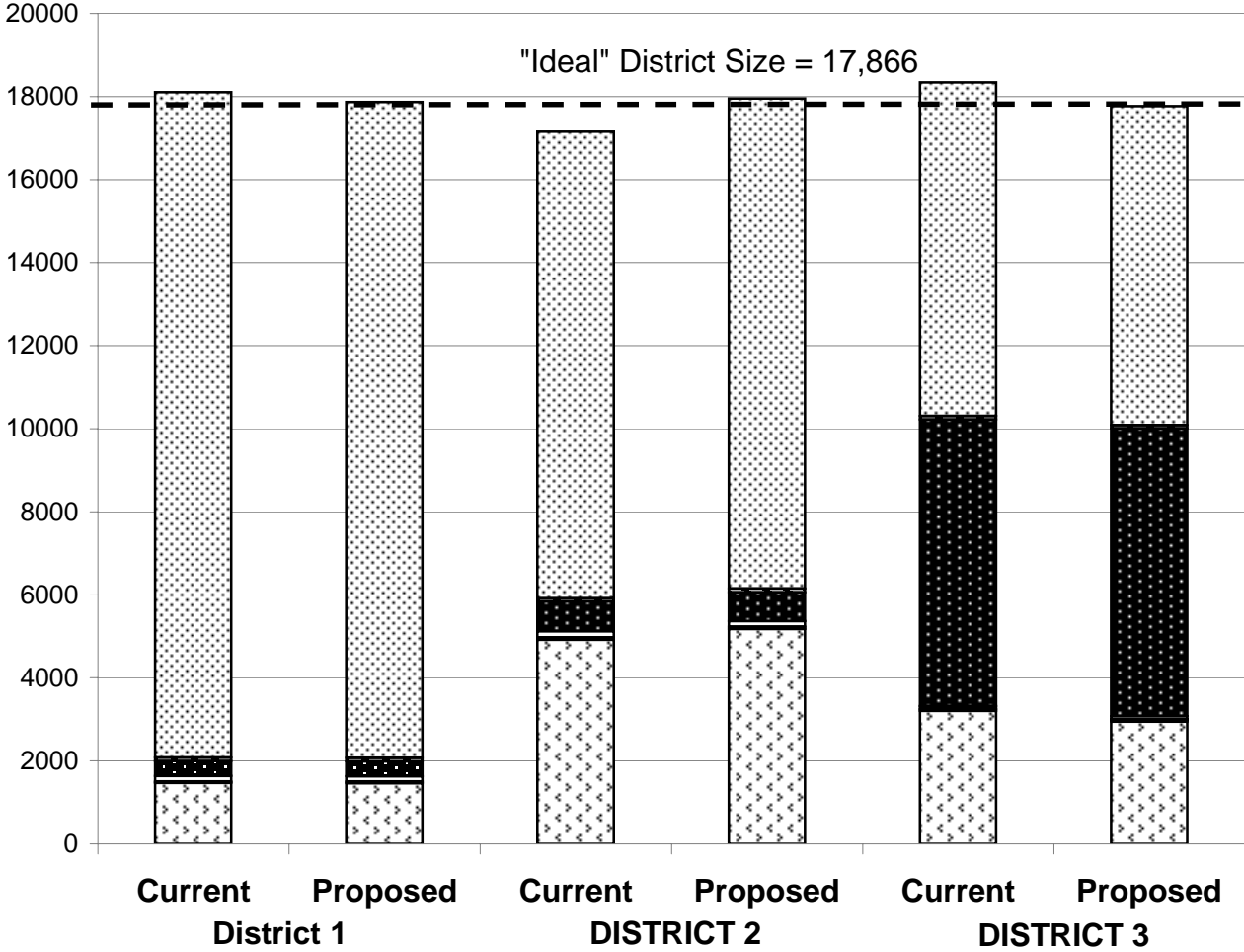
<u>Voting-Age Number:</u>	<u>District 1</u>	<u>District 2</u>	<u>District 3</u>	<u>Total, All Districts</u>
Hispanic, of any race	943	3,544	2,032	6,519
Non-Hispanic White	13,601	9,794	6,527	29,922
Non-Hispanic Black	46	69	56	171
Non-Hispanic American Indian	265	463	4,417	5,145
Non-Hispanic Asian	90	98	64	252
Non-Hispanic Hawaiian	17	8	5	30
Non-Hispanic other race	9	23	12	44
Non-Hispanic two or more races	11	15	17	43
<i>Voting-Age Population</i>	14,982	14,014	13,130	42,126
<u>Voting-Age Percent:</u>				
Hispanic, of any race	6.29%	25.29%	15.48%	15.48%
Non-Hispanic White	90.78%	69.89%	49.71%	71.03%
Non-Hispanic Black	0.31%	0.49%	0.43%	0.41%
Non-Hispanic American Indian	1.77%	3.30%	33.64%	12.21%
Non-Hispanic Asian	0.60%	0.70%	0.49%	0.60%
Non-Hispanic Hawaiian	0.11%	0.06%	0.04%	0.07%
Non-Hispanic other race	0.06%	0.16%	0.09%	0.10%
Non-Hispanic two or more races	0.07%	0.11%	0.13%	0.10%
<i>Voting-Age Percent</i>	100.00%	100.00%	100.00%	100.00%

Source: Census 2010 Redistricting Data (Public Law 94-171) Summary file, Arizona

Tabulation: Research Advisory Services, Inc., Phoenix AZ (602) 230-9580

Race and Origin Composition of Current and Proposed Gila County Supervisory Districts DRAFT PLAN C

Persons



- Non-Hispanic White
- Non-Hispanic Black
- Non-Hispanic Indian
- Non-Hisp. Asian/Hawaiian
- Non-Hisp. Other/Multiracial
- Hispanic

Source: Census 2010
Redistricting Data (Public
Law 94-171) Summary File,
Arizona

**GILA COUNTY SUPERVISORIAL DISTRICTS
DRAFT PLAN C**

	Current	Proposed Plan	Change
Population, District 1	18,105	17,870	-235
Population, District 2	17,151	17,955	804
Population, District 3	18,341	17,772	-569
Population deviation, District 1	239	4	
Population deviation, District 2	-715	89	
Population deviation, District 3	475	-94	
Percent deviation, District 1	1.34%	0.02%	
Percent deviation, District 2	-4.00%	0.50%	
Percent deviation, District 3	2.66%	-0.52%	
Total plan deviation, number	1,190	183	
Total plan deviation, percent	6.66%	1.02%	
Percent voting-age Hispanic, District 1	6.23%	6.29%	0.06%
Percent voting-age Hispanic, District 2	24.88%	25.29%	0.41%
Percent voting-age Hispanic, District 3	16.45%	15.48%	-0.97%
Percent V-A Non-Hispanic Native American, District 1	1.75%	1.77%	0.02%
Percent V-A Non-Hispanic Native American, District 2	3.63%	3.30%	-0.33%
Percent V-A Non-Hispanic Native American, District 3	32.77%	33.64%	0.87%
Percent V-A Non-Hispanic Black, District 1	0.31%	0.31%	0.00%
Percent V-A Non-Hispanic Black, District 2	0.46%	0.49%	0.03%
Percent V-A Non-Hispanic Black, District 3	0.46%	0.43%	-0.03%
Percent voting-age total minority residents, District 1	9.13%	9.22%	0.09%
Percent voting-age total minority residents, District 2	30.16%	30.11%	-0.05%
Percent voting-age total minority residents, District 3	50.28%	50.29%	0.01%