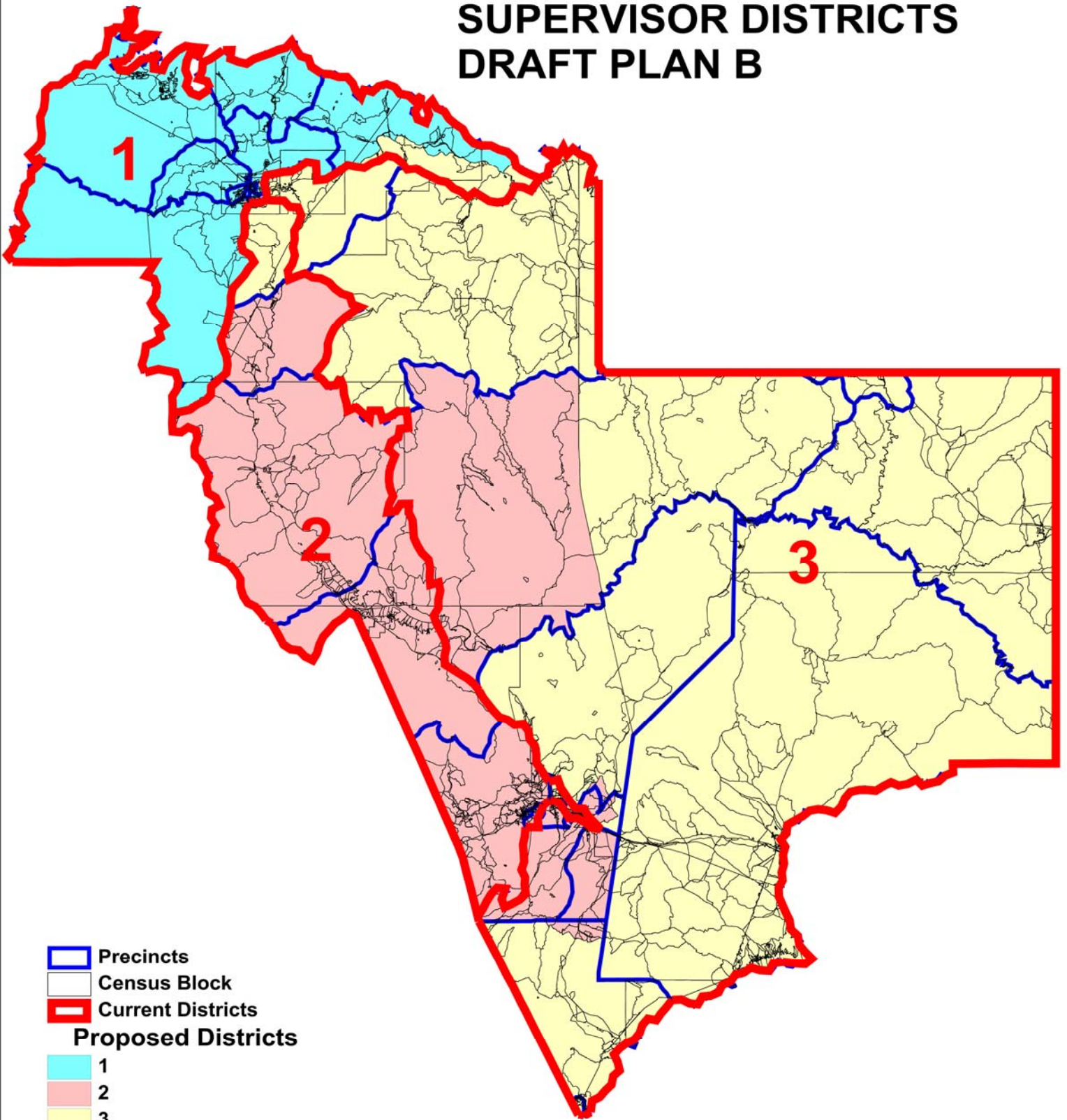




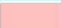
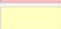


# GILA COUNTY SUPERVISOR DISTRICTS DRAFT PLAN B



-  Precincts
-  Census Block
-  Current Districts
- Proposed Districts**
-  1
-  2
-  3

0 10 20 30  
Miles

Zane Grey

**GILA COUNTY  
SUPERVISOR DISTRICTS  
DRAFT PLAN B  
PAYSON AREA DETAIL**

Payson #5

Payson #8

Payson #4




Star Valley


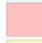
Payson #3

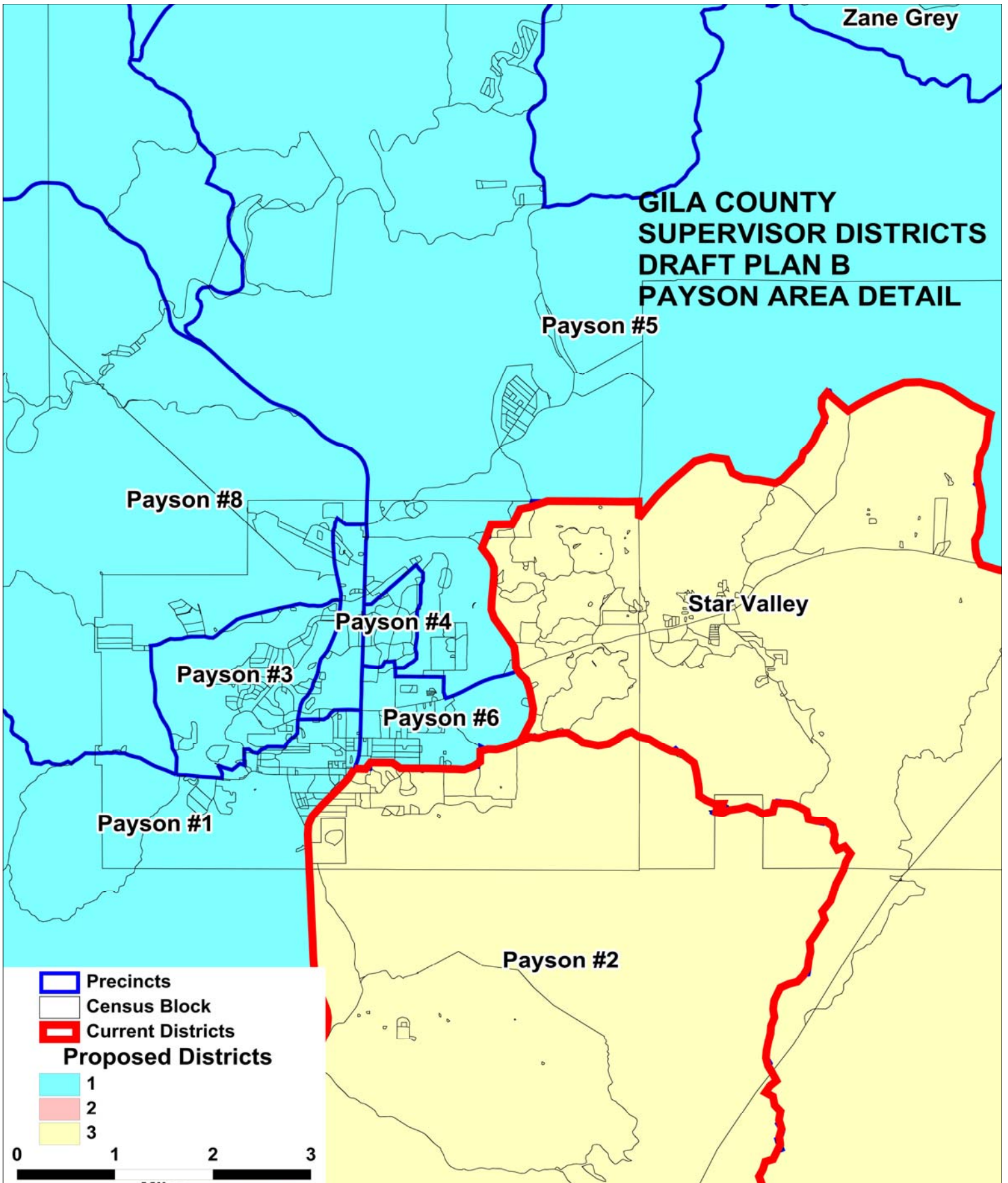
Payson #6

Payson #1

Payson #2

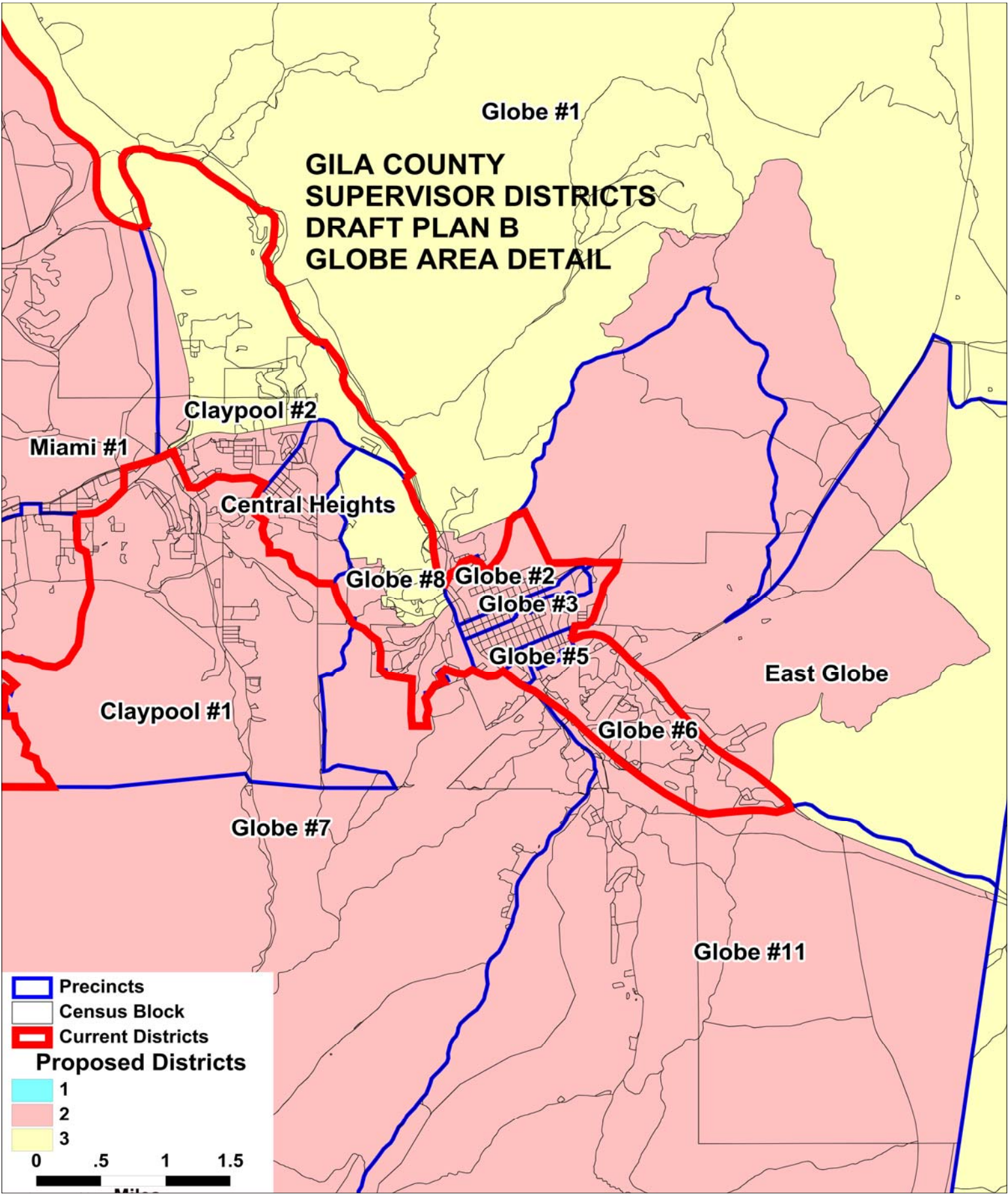
-  Precincts
-  Census Block
-  Current Districts
- Proposed Districts**

-  1
-  2
-  3





# GILA COUNTY SUPERVISOR DISTRICTS DRAFT PLAN B GLOBE AREA DETAIL



**GILA COUNTY SUPERVISORIAL DISTRICTS  
TOTAL POPULATION BY RACE AND HISPANIC ORIGIN  
DRAFT PLAN B**

<b><u>Number:</u></b>	<b><u>District 1</u></b>	<b><u>District 2</u></b>	<b><u>District 3</u></b>	<b><u>Total, All Districts</u></b>
Hispanic, of any race	1,465	5,257	2,866	<b>9,588</b>
Non-Hispanic White	15,891	11,751	7,656	<b>35,298</b>
Non-Hispanic Black	85	98	65	<b>248</b>
Non-Hispanic American Indian	356	677	6,942	<b>7,975</b>
Non-Hispanic Asian	114	126	81	<b>321</b>
Non-Hispanic Hawaiian	22	5	12	<b>39</b>
Non-Hispanic other race	20	24	22	<b>66</b>
Non-Hispanic two or more races	13	23	26	<b>62</b>
<b>Total Population</b>	<b>17,966</b>	<b>17,961</b>	<b>17,670</b>	<b>53,597</b>
<b><u>Percent:</u></b>				
Hispanic, of any race	8.15%	29.27%	16.22%	<b>17.89%</b>
Non-Hispanic White	88.45%	65.43%	43.33%	<b>65.86%</b>
Non-Hispanic Black	0.47%	0.55%	0.37%	<b>0.46%</b>
Non-Hispanic American Indian	1.98%	3.77%	39.29%	<b>14.88%</b>
Non-Hispanic Asian	0.63%	0.70%	0.46%	<b>0.60%</b>
Non-Hispanic Hawaiian	0.12%	0.03%	0.07%	<b>0.07%</b>
Non-Hispanic other race	0.11%	0.13%	0.12%	<b>0.12%</b>
Non-Hispanic two or more races	0.07%	0.13%	0.15%	<b>0.12%</b>
<b>Total Percent</b>	<b>100.00%</b>	<b>100.00%</b>	<b>100.00%</b>	<b>100.00%</b>
Ideal Population	17,866	17,866	17,866	<b>Total</b>
Total Population	17,966	17,961	17,670	<b>deviation:</b>
Numeric deviation from Ideal Value	100	95	-196	<b>296</b>
Percent deviation from Ideal Value	0.56%	0.53%	-1.10%	<b>1.66%</b>

Source: Census 2010 Redistricting Data (Public Law 94-171) Summary file, Arizona  
 Tabulation: Research Advisory Services, Inc., Phoenix AZ (602) 230-9580

**GILA COUNTY SUPERVISORIAL DISTRICTS  
VOTING-AGE POPULATION BY RACE AND HISPANIC ORIGIN  
DRAFT PLAN B**

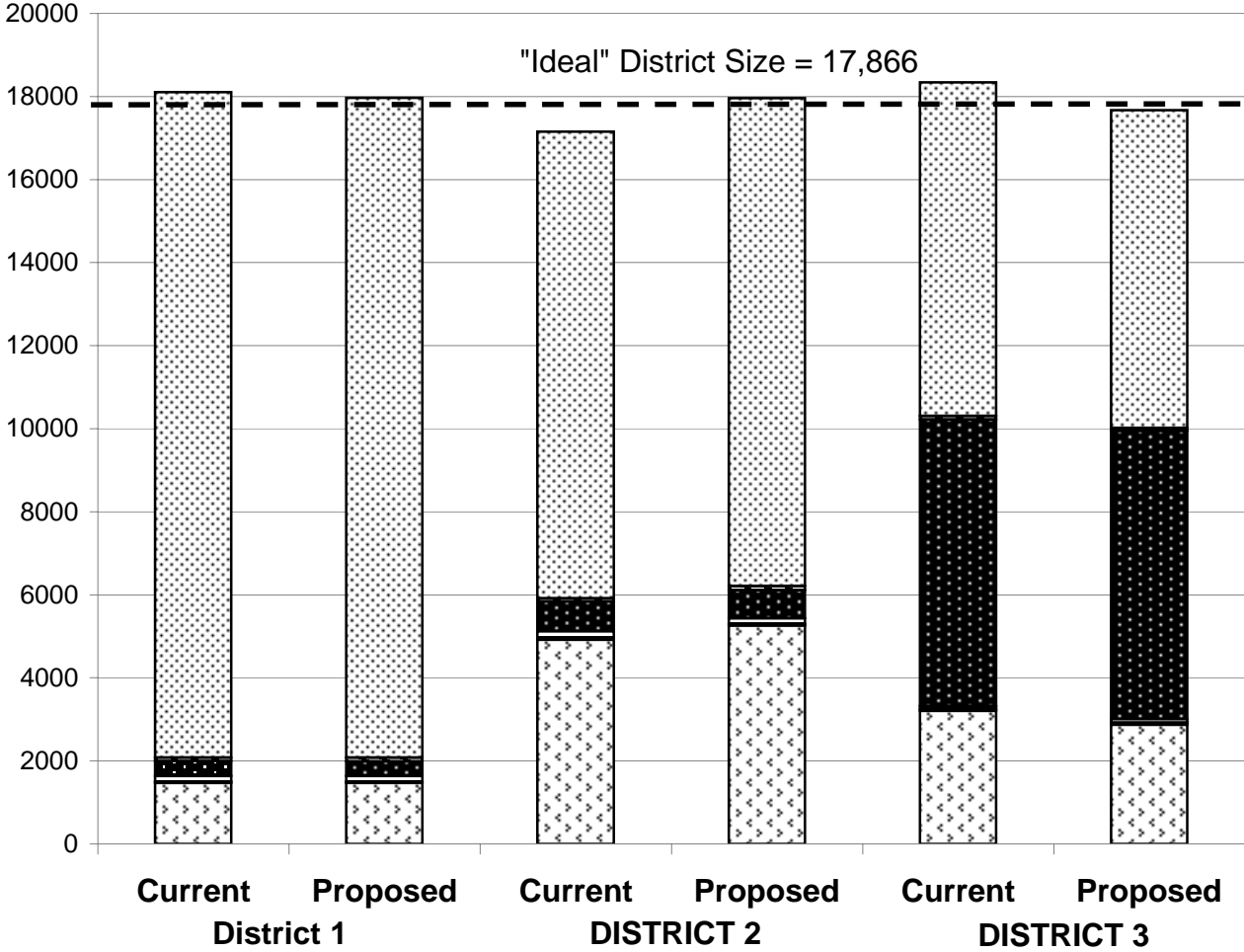
<b><u>Voting-Age Number:</u></b>	<b><u>District 1</u></b>	<b><u>District 2</u></b>	<b><u>District 3</u></b>	<b><u>Total, All Districts</u></b>
Hispanic, of any race	945	3,629	1,945	<b>6,519</b>
Non-Hispanic White	13,682	9,792	6,448	<b>29,922</b>
Non-Hispanic Black	47	76	48	<b>171</b>
Non-Hispanic American Indian	265	457	4,423	<b>5,145</b>
Non-Hispanic Asian	90	97	65	<b>252</b>
Non-Hispanic Hawaiian	17	3	10	<b>30</b>
Non-Hispanic other race	9	16	19	<b>44</b>
Non-Hispanic two or more races	11	16	16	<b>43</b>
<b><i>Voting-Age Population</i></b>	<b>15,066</b>	<b>14,086</b>	<b>12,974</b>	<b>42,126</b>
<b><u>Voting-Age Percent:</u></b>				
Hispanic, of any race	6.27%	25.76%	14.99%	<b>15.48%</b>
Non-Hispanic White	90.81%	69.52%	49.70%	<b>71.03%</b>
Non-Hispanic Black	0.31%	0.54%	0.37%	<b>0.41%</b>
Non-Hispanic American Indian	1.76%	3.24%	34.09%	<b>12.21%</b>
Non-Hispanic Asian	0.60%	0.69%	0.50%	<b>0.60%</b>
Non-Hispanic Hawaiian	0.11%	0.02%	0.08%	<b>0.07%</b>
Non-Hispanic other race	0.06%	0.11%	0.15%	<b>0.10%</b>
Non-Hispanic two or more races	0.07%	0.11%	0.12%	<b>0.10%</b>
<b><i>Voting-Age Percent</i></b>	<b>100.00%</b>	<b>100.00%</b>	<b>100.00%</b>	<b>100.00%</b>

Source: Census 2010 Redistricting Data (Public Law 94-171) Summary file, Arizona

Tabulation: Research Advisory Services, Inc., Phoenix AZ (602) 230-9580

**Race and Origin Composition of Current and Proposed Gila County  
Supervisory Districts  
DRAFT PLAN B**

Persons



- ▨ Non-Hispanic White
- ▩ Non-Hispanic Black
- Non-Hispanic Indian
- Non-Hisp. Asian/Hawaiian
- ▤ Non-Hisp. Other/Multiracial
- ▧ Hispanic

Source: Census 2010  
Redistricting Data (Public  
Law 94-171) Summary File,  
Arizona

**GILA COUNTY SUPERVISORIAL DISTRICTS  
DRAFT PLAN B**

	<b>Current</b>	<b>Proposed Plan</b>	<b>Change</b>
Population, District 1	18,105	17,966	-139
Population, District 2	17,151	17,961	810
Population, District 3	18,341	17,670	-671
Population deviation, District 1	239	100	
Population deviation, District 2	-715	95	
Population deviation, District 3	475	-196	
Percent deviation, District 1	1.34%	0.56%	
Percent deviation, District 2	-4.00%	0.53%	
Percent deviation, District 3	2.66%	-1.10%	
Total plan deviation, number	1,190	296	
Total plan deviation, percent	6.66%	1.66%	
Percent voting-age Hispanic, District 1	6.23%	6.27%	0.04%
Percent voting-age Hispanic, District 2	24.88%	25.76%	0.88%
Percent voting-age Hispanic, District 3	16.45%	14.99%	-1.46%
Percent V-A Non-Hispanic Native American, District 1	1.75%	1.76%	0.01%
Percent V-A Non-Hispanic Native American, District 2	3.63%	3.24%	-0.39%
Percent V-A Non-Hispanic Native American, District 3	32.77%	34.09%	1.32%
Percent V-A Non-Hispanic Black, District 1	0.31%	0.31%	0.00%
Percent V-A Non-Hispanic Black, District 2	0.46%	0.54%	0.08%
Percent V-A Non-Hispanic Black, District 3	0.46%	0.37%	-0.09%
Percent voting-age total minority residents, District 1	9.13%	9.19%	0.06%
Percent voting-age total minority residents, District 2	30.16%	30.48%	0.32%
Percent voting-age total minority residents, District 3	50.28%	50.30%	0.02%