

Linda V. Eastlick, Director  
leastlick@co.gila.az.us  
(928) 402-8708



Elizabeth Mata, Administrative Assistant  
lmata@co.gila.az.us  
(928) 402-8709

David Rogers, Elections Specialist  
drogers@co.gila.az.us  
(928) 402-8750

Josephine Goode, Voter Outreach Coordinator  
jgoode@co.gila.az.us  
(928) 402-8628

## GILA COUNTY DEPARTMENT OF ELECTIONS

1400 E. Ash  
Globe, Arizona 85501

August 19, 2011

Honorable Chairman Terry Rambler  
San Carlos Apache Tribe  
P. O. Box 0  
San Carlos, AZ 85550

Dear Honorable Chairman Rambler:

Thank you for the opportunity to speak to the Tribal Council about the important topic of Redistricting in Gila County. I hope the information and handouts provided were of benefit to you and to the other members of the Tribal Council. As I stated in the meeting the Board of Supervisors will have a Work Session to discuss these mapping alternatives next Tuesday, August 23, at 10:00 am. The Board of Supervisors welcomes input from the San Carlos Tribal Council as well as input from citizens of the San Carlos community during that meeting or at any of the public meetings to be held September 6 through September 17.

I would appreciate the opportunity to come back to another meeting with the Tribal Council during the period September 7 through September 16 to discuss the maps that the Board of Supervisors agrees should be sent out for public comment.

During the meeting today, we also briefly discussed the State of Arizona legislative and congressional redistricting. With your permission, I will advise our County Manager to have the Eastern Arizona Organization of Counties make contact with Mr. Titla regarding State redistricting issues and the Resolution for which they are requesting Tribal support. Mr. Titla can then communicate appropriately with the Tribal Council about those matters.

I have forwarded to Mr. Titla mapping information for the San Carlos School District. We will begin working on information you requested from LaPaz County regarding their formation of a new County.

Honorable Chairman Terry Rambler

Page 2

Again we are honored to have the opportunity to come before the San Carlos Apache Tribal Council. Thank you for your time. Please do not hesitate to contact me if there is any further information we can provide. We look forward to working together with the Tribal Council on redistricting and other important matters that affect all of Gila County

Sincerely,

A handwritten signature in cursive script that reads "Linda V. Eastlick".

Linda V. Eastlick, Director  
Gila County Elections

cc: Honorable Dr. John Bush, Tribal Vice Chairman  
Tribal Council Members  
Steve Titla, Legal Counsel  
Katrina Takalai, Tribal Secretary  
Don E. McDaniel, Gila County Manager



**SPECIAL COUNCIL MEETING**  
August 19, 2011 - 9:00 a.m.  
Tribal Administration Conference Room

Call to order:

Opening Prayer:

Roll Call:

Approval of Agenda:

Approval of Minutes: No Minutes to approve at this time

**REGULAR SESSION:**

1. San Carlos Tribal Farm Presentation – Rob Merrill
2. Job Training Opportunity with Freeport McMoran, Terry Rambler/Terry Jones
3. First Things First Proposed Grant Agreement, Beatrice Lee – Language Preservation Program
4. Redistricting Gila/Graham County, Steve Titla
5. AIG Strategic Plan, Terry Rambler
6. Homesite Lease, Paul Thompson, Jr.
7. BIA Advisory – High Risk Status, Patricia Bowyer – Acting Tribal Treasurer
8. Bylas Dental Clinic, Martha Interpreter-Baylish
9. Bylas Incubator Project Change Order No. 10, Charles Russell
10. S.C. Rec & Wildlife – COPS Tribal Resource Grant, Harold Nofchissey
11. Cobre Valley Regional Medical Center Injury Report, Bradley Bullis
12. Cobre Valley ALS, BLS, EMS, Cherrill Williams
13. Vehicle Lease, Terry Rambler

**EXECUTIVE SESSION:**

14. Wiley v. SCAT, Alex Ritchie

Adjournment:

**Agenda items are subject to change during the Approval of Agenda. Executive Sessions are closed to the general public.**

**Meeting Minutes**  
**San Carlos Apache Tribal Council**  
**August 19, 2011**

In attendance:

Honorable Chairman Terry Rambler  
Vice Chairman Dr. John Bush  
Mitch Hoffman - Seven Mile  
Tao Etpison - Gilson Wash  
Fred Ferreira - Peridot  
Hugh Moses - Bylas  
Simon Hooke - Gilson  
Martha Interpreter Baylish - Bylas  
Steve Titla - Tribal Attorney  
Terry Jones - Tribal Business Manager  
Katrina Talkalai - Tribal Secretary  
Josephine Goode - Gila County Voter Outreach Coordinator  
Jacque Griffin - Assistant County Manager  
Linda Eastlick - Gila County Elections Director  
David Rogers - Gila County Elections specialist

Steve Titla discussed

- Voting Rights Act of 1965 and Section 5 of the Voting Rights Act and need to comply with the law
- State of Arizona redistricting and the IRC of 2001 and the resulting law suit which was filed.
- 2010 State redistricting
- The Tonto Apache map which puts the Tonto Apache with White Mountain and San Carlos Apaches.
- Stated that San Carlos did not draw maps but that they should come up with a map
- Members of the tribe living across the river in Graham County and the difficulty they have being in Graham County
- Mr. Titla also participated in the Linda Eastlick discussion and answered Council questions relative to census and moving the County boundaries.

Josephine Goode discussed:

Mr. Titla asked Josephine to explain why they have voters in Graham County and in Gila County. She explained the boundaries and also explained where the citizens should vote. Council asked about changing the County line. Discussed the fact a change in the County boundary would be a lot of work and would require a lot of participation by people and the Council. Reiterated voters in Graham County need to

vote in Graham County .Tribal members don't want to vote in Graham because they don't know anyone in Graham County.

Linda Eastlick discussed:

- The role of the Independent Redistricting Commission for Arizona versus County redistricting
  
- Eastern Arizona Counties Organization (ECO) including
  - The handout
  - Organization makeup of the County Managers and Board of Supervisors representatives from the 5 counties Eastern, rural counties- Apache, Navaho, Graham, Greenly, Gila
  - EOC's desire to meet with the tribe to discuss a resolution to keep LD 5 in tact essentially as it is.
  - Contact information for the Governmental Affairs director of Navaho County.
  
- The Gila County Redistricting Committee
  
- Question relative to moving the County line between Graham and Gila such that all of the San Carlos reservation would be in Gila County was asked by Chairman Rambler. Responded that they would need to have the tribal attorney make contact with the Secretary of State's office as this would be a State issue since it would involve two counties. Explained that this would have to go to a vote of all the people in both Counties. Recommended the Tribe may want to work with the County Supervisors to gain support for such a proposal. Jacque Griffin stated there was precedence for such an action in that LaPaz had formed itself as a new County in recent history. Council asked that we provide a map of the San Carlos School District, which flows across the County boundaries, and for information about how LaPaz created their own County.
  
- Discussed the mapping alternatives submitted to the Board of Supervisors
  - Reviewed the Supervisorial mapping alternatives and statistics
  - Invited Tribal Council to come to the Board of Supervisors meeting next Tuesday
  - Explained none of the maps ad been adopted and that these six maps would be discussed at next Tuesday's Board of Supervisors work session.
  - After the Board has considered all mapping alternatives and comments to date, they will decide which maps will be sent out for public comment during a second round of public meetings September 7-16.
  
- Requested another meeting with the Tribal Council during the September 7-16 timeframe

## SAN CARLOS TRIBAL COUNCIL MEETING

AUGUST 19, 2011

Honorable Chairman Rambler and distinguished members of the Council

Judy Dickerson, Graham County Elections Director, is unable to attend today; however, she has explained to me that Graham County has not started their redistricting of supervisor districts yet. They will be starting in the next month or so. Please contact her with any question you may have.

Her phone: 928.428.3937

Her email: [jdickerson@graham.az.gov](mailto:jdickerson@graham.az.gov)

Redistricting for Gila County is a separate process from the Independent Redistricting Commission/Arizona State redistricting

Gila County is redistricting Supervisor Districts and College Districts

The Supervisors have authority to change those lines

Our Supervisors and County Manager may make comments and support a mapping idea for the Congressional or Legislative changes, but they have no authority to adopt those changes as the IRC has that authority.

I have some information from the Eastern Arizona Counties Organization to share with the Tribal Council today. Copies are in the information packet we have made for each Council member.

If you would like to review the supervisory and college district maps that the Board of Supervisors will be studying next Tuesday at a work session, copies are in the information packet we have made for each Council member.

Any maps finally selected must abide by not only the Constitutional principle of one person one vote, but they must also abide by the Voting Rights Act and not dilute minority populations such that they cannot elect candidates of their choice.

Any maps finally selected will be sent to the Department of Justice for preclearance.

The Board of Supervisors will be selecting two or three maps on September 6 which will be taken out for public comment at meetings to be held September 7 through September 16. Gila County would like to present those mapping alternatives to the Tribal Council during that period of time.

The White Mountain Tribal Council advised me yesterday they will probably meet with us to discuss this topic at their regular Tribal Council meeting on September 7. May I request that the San Carlos Tribal Secretary let me know when we could schedule similar presentation to the San Carlos Tribal Council?

## Information for the San Carlos Apache Tribal Council. August 19, 2011

Mr. Hunter Moore, Navajo County Governmental Affairs director is working with the Eastern Arizona Counties Organization (ECO), which consists of County Managers and members of the Boards of Supervisors from Apache, Navajo, Gila, Greenlee, and Graham Counties on State redistricting proposals.

Each of the ECO member counties support the a resolution which essentially says that the ECO supports the long history and current configuration of State Legislative District 5. The ECO recognizes that while they support that current configuration, they must look at the impact of census changes and the Voting Rights impact of the current configuration and, therefore, are evaluating other options while at the same time supporting the current configuration.

Eastern Arizona Counties Organization passed the following resolution on August 4<sup>th</sup>. They have been working with members of the White Mountain Apache Tribe to encourage them to adopt a similar resolution of their own and are hopeful that the San Carlos Apache Tribe will also adopt a similar resolution.

Mr. Moore would like to know who the San Carlos Apache Tribal Council contact for redistricting is so that he can arrange a meeting with the Council and members of the ECO and possibly Senator Sylvia Allen.

Mr. Moore's contact information is:

Hunter Moore, Navajo County Governmental Affairs Director

P. O. Box 668

Holbrook, AZ 86025

Cell: 480.254.2387 Office: 928.524.4044

Fax: 928.524.4239

---

The draft EOC resolution is as follows:

### **Eastern Arizona Counties Organization**

**P.O. Box 2010, Payson, AZ 85547**

**Ph: 928-472-5377 Fax: 928-472-5379 Cell: 928-587-1322**

#### **A RESOLUTION OF THE BOARD OF DIRECTORS OF THE EASTERN ARIZONA COUNTIES ORGANIZATION IN SUPPORT OF RETAINING THE CURRENT GEOGRAPHIC CONFIGURATION OF ARIZONA STATE LEGISLATIVE DISTRICT 5**

**WHEREAS**, the Eastern Arizona Counties Organization ("ECO"), comprised of Gila, Graham, Greenlee, Apache, and Navajo counties, has a long history and interest in establishing Arizona State Legislative District 5 ("LD5"), as currently configured; and

**WHEREAS**, the member counties of the Eastern Arizona Counties Organization ("ECO") essentially comprise the current LD5; and

**WHEREAS**, the member counties of the Eastern Arizona Counties Organization (“ECO”) are a distinct and recognizable community of interest and share similar issues of a historical, social, economic, and political nature; and

**WHEREAS**, the current LD5 has been found to be acceptable to U.S. Department of Justice; and

**WHEREAS**, the current LD5 is, for a large rural district, both compact and contiguous; and

**WHEREAS**, the redistricting proposal supported by ECO (see attached map) is one that builds on the strengths of the current LD5 by maintaining its integrity, with the addition of the Verde Valley, a rural area that shares many similarities; and

**WHEREAS**, this proposed enlarged LD5 fully meets the requirement demographically for new legislative districts by being within less than 0.5 % of the target population total; and

**WHEREAS**, with the addition of the Verde Valley to the current LD5, this new LD5 meets competitive standards requirement for partisan politics as there is an approximate equal split amongst Republican, Democrat, and Independent voters; and

**WHEREAS**, ECO believes that this balanced and entirely reasonable redistricting proposal will fairly retain the common ties that the counties, cities, towns, and tribes share in the areas of natural resource management, travel, tourism, among others; and

**NOW, THEREFORE BE IT RESOLVED** that the Eastern Arizona Counties Organization (“ECO”) strongly urges the Arizona Independent Redistricting Commission to endorse this proposal and adopt the map as attached as the newly configured Arizona State Legislative District 5.

**UNANIMOUSLY PASSED AND ADOPTED** this 4th day of August 2011.

**THE EASTERN ARIZONA COUNTIES ORGANIZATION BOARD OF DIRECTORS:**

/s/ **MARK C. HERRINGTON**, Supervisor, Graham County, Chairman

/s/ **RICHARD LUNT**, Supervisor, Greenlee County, Vice-Chairman

/s/ **DAVID TENNEY**, Supervisor, Navajo County

/s/ **TOMMIE C. MARTIN**, Supervisor, Gila County

/s/ **R. JOHN LEE**, Supervisor, Apache County

Attest:

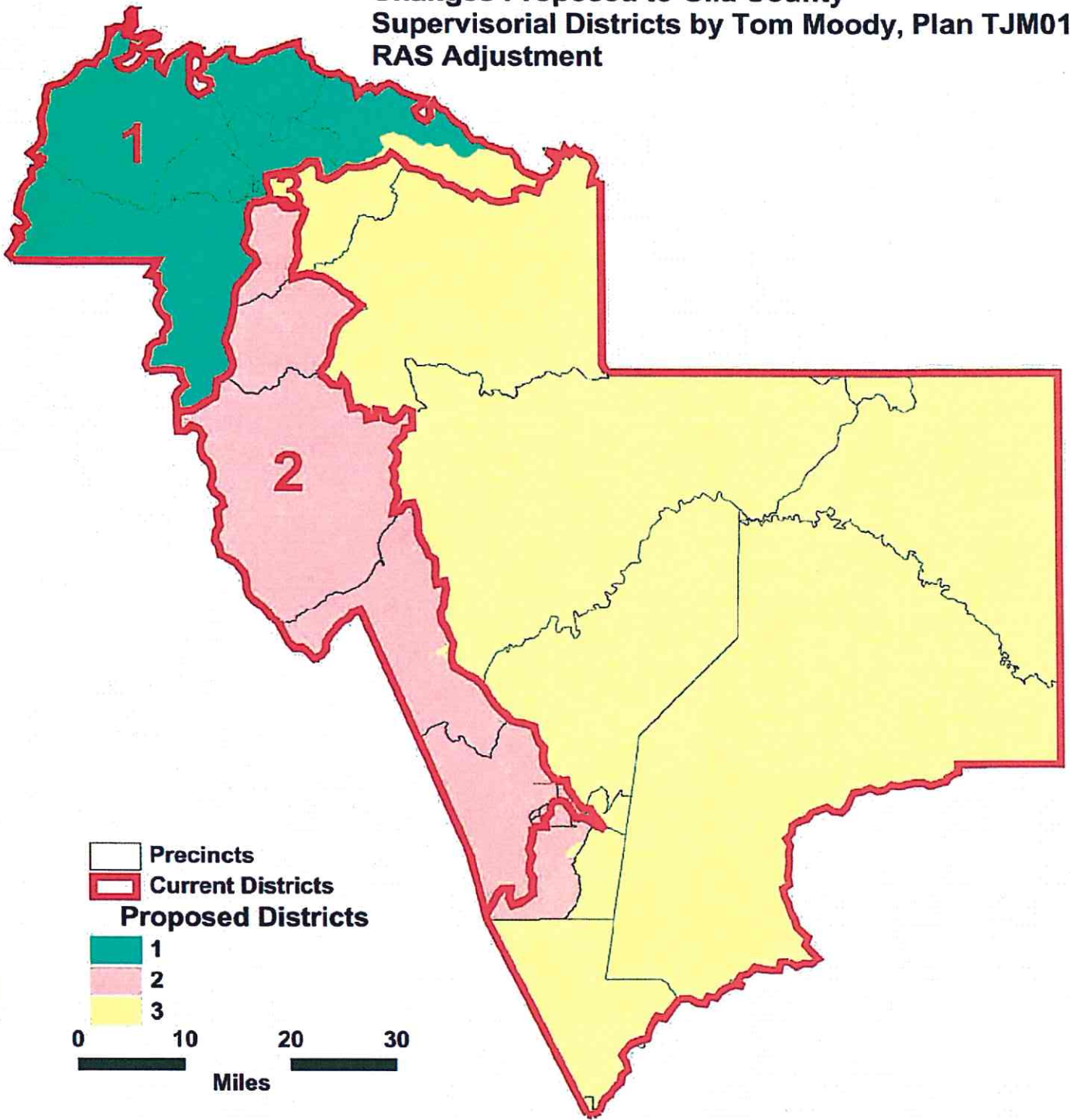
---

Larry K. Stephenson, Ph.D., AICP, Executive Director  
Eastern Arizona Counties Organization

Page 2 of 2



**Changes Proposed to Gila County  
Supervisory Districts by Tom Moody, Plan TJM01  
RAS Adjustment**



Pine-Strawberry

# Plan TJM01, Payson Area

Payson #5

Payson #8

Star Valley

Payson #4







3

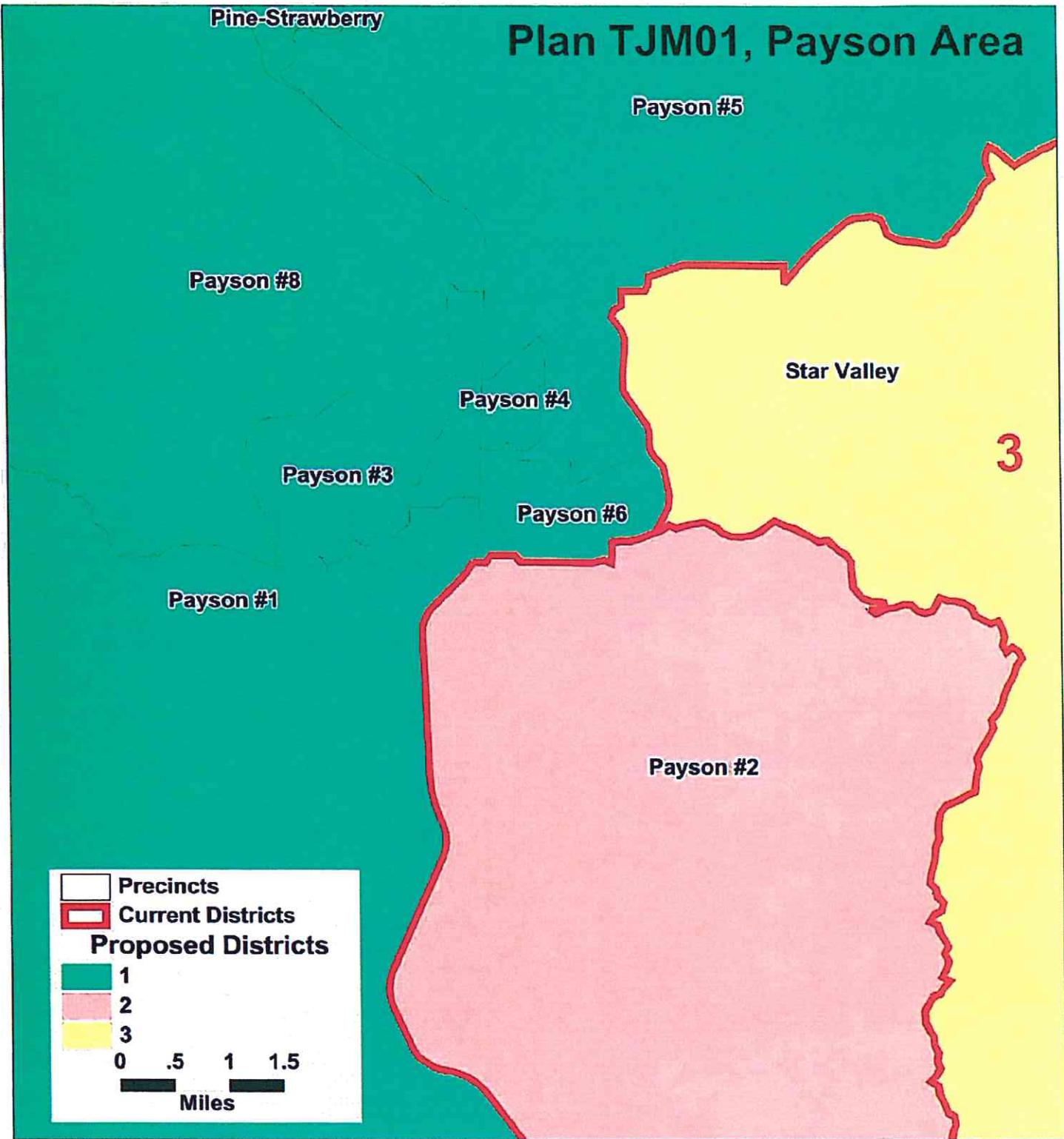
Payson #3

Payson #6

Payson #1

Payson #2

	Precincts
	Current Districts
<b>Proposed Districts</b>	
	1
	2
	3
0 .5 1 1.5	
	
Miles	



# Plan TJM01, Globe Area

Globe #1

Claypool #2

Central Heights

East Globe

Globe #2

Claypool #1

Globe #8

Globe #3

Globe #4

Globe #5

Globe #6

Globe #11

Precincts

Current Districts

Proposed Districts

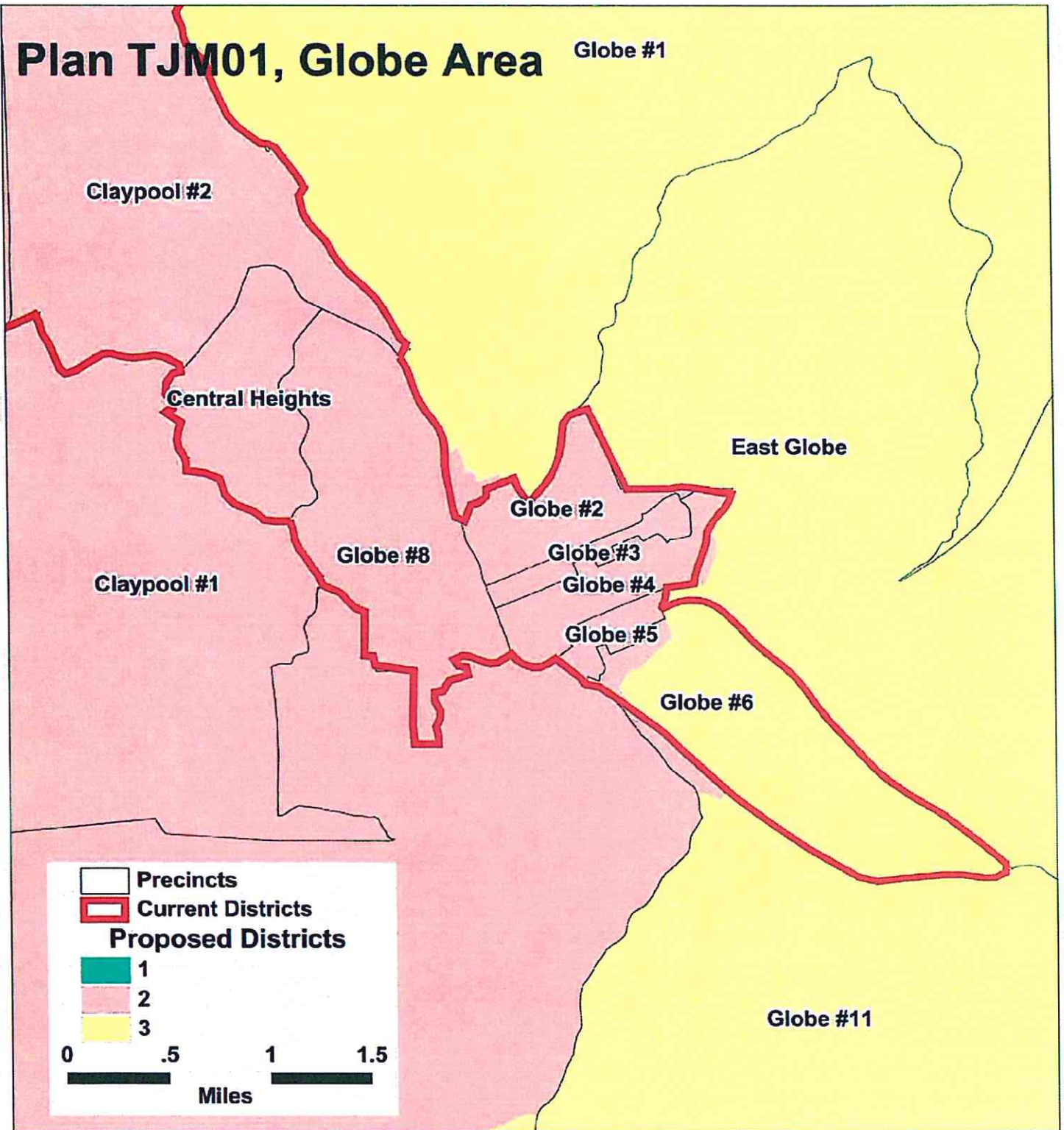
1

2

3

0 .5 1 1.5

Miles



**GILA COUNTY SUPERVISORIAL DISTRICTS  
TOTAL POPULATION BY RACE AND HISPANIC ORIGIN  
PLAN SUBMITTED BY: Tom Moody, RAS Adjustment TJM01**

<b>Number:</b>	<b>District 1</b>	<b>District 2</b>	<b>District 3</b>	<b>Total, All Districts</b>
Hispanic, of any race	1,463	5,178	2,947	9,588
Non-Hispanic White	15,799	11,807	7,692	35,298
Non-Hispanic Black	83	93	72	248
Non-Hispanic American Indian	356	686	6,933	7,975
Non-Hispanic Asian	114	128	79	321
Non-Hispanic Hawaiian	22	11	6	39
Non-Hispanic other race	20	31	15	66
Non-Hispanic two or more races	13	21	28	62
<b>Total Population</b>	<b>17,870</b>	<b>17,955</b>	<b>17,772</b>	<b>53,597</b>

<b>Percent:</b>	<b>District 1</b>	<b>District 2</b>	<b>District 3</b>	<b>Total</b>
Hispanic, of any race	8.19%	28.84%	16.58%	17.89%
Non-Hispanic White	88.41%	65.76%	43.28%	65.86%
Non-Hispanic Black	0.46%	0.52%	0.41%	0.46%
Non-Hispanic American Indian	1.99%	3.82%	39.01%	14.88%
Non-Hispanic Asian	0.64%	0.71%	0.44%	0.60%
Non-Hispanic Hawaiian	0.12%	0.06%	0.03%	0.07%
Non-Hispanic other race	0.11%	0.17%	0.08%	0.12%
Non-Hispanic two or more races	0.07%	0.12%	0.16%	0.12%
<b>Total Percent</b>	<b>100.00%</b>	<b>100.00%</b>	<b>100.00%</b>	<b>100.00%</b>

Ideal Population	17,866	17,866	17,866	<b>Total</b>
Total Population	17,870	17,955	17,772	<b>deviation:</b>
Numeric deviation from Ideal Value	4	89	-94	183
Percent deviation from Ideal Value	0.02%	0.50%	-0.52%	1.02%

Source: Census 2010 Redistricting Data (Public Law 94-171) Summary file, Arizona  
Tabulation: Research Advisory Services, Inc., Phoenix AZ (602) 230-9580

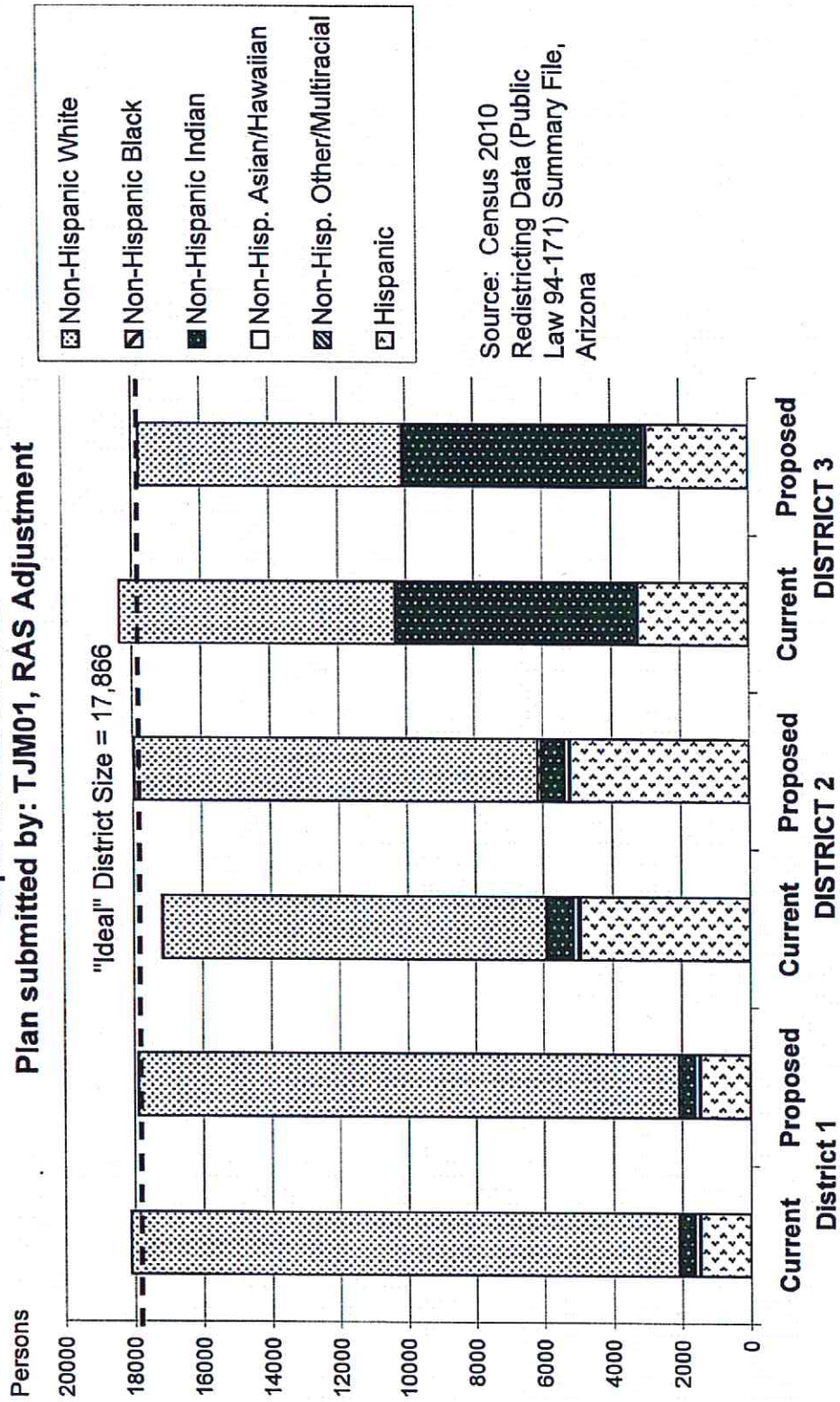
**GILA COUNTY SUPERVISORIAL DISTRICTS  
VOTING-AGE POPULATION BY RACE AND HISPANIC ORIGIN  
PLAN SUBMITTED BY: Tom Moody, RAS Adjustment TJM01**

<u>Voting-Age Number:</u>	<u>District 1</u>	<u>District 2</u>	<u>District 3</u>	<u>Total, All Districts</u>
Hispanic, of any race	943	3,544	2,032	<b>6,519</b>
Non-Hispanic White	13,601	9,794	6,527	<b>29,922</b>
Non-Hispanic Black	46	69	56	<b>171</b>
Non-Hispanic American Indian	265	463	4,417	<b>5,145</b>
Non-Hispanic Asian	90	98	64	<b>252</b>
Non-Hispanic Hawaiian	17	8	5	<b>30</b>
Non-Hispanic other race	9	23	12	<b>44</b>
Non-Hispanic two or more races	11	15	17	<b>43</b>
<b>Voting-Age Population</b>	<b>14,982</b>	<b>14,014</b>	<b>13,130</b>	<b>42,126</b>

<u>Voting-Age Percent:</u>	<u>District 1</u>	<u>District 2</u>	<u>District 3</u>	<u>Total, All Districts</u>
Hispanic, of any race	6.29%	25.29%	15.48%	<b>15.48%</b>
Non-Hispanic White	90.78%	69.89%	49.71%	<b>71.03%</b>
Non-Hispanic Black	0.31%	0.49%	0.43%	<b>0.41%</b>
Non-Hispanic American Indian	1.77%	3.30%	33.64%	<b>12.21%</b>
Non-Hispanic Asian	0.60%	0.70%	0.49%	<b>0.60%</b>
Non-Hispanic Hawaiian	0.11%	0.06%	0.04%	<b>0.07%</b>
Non-Hispanic other race	0.06%	0.16%	0.09%	<b>0.10%</b>
Non-Hispanic two or more races	0.07%	0.11%	0.13%	<b>0.10%</b>
<b>Voting-Age Percent</b>	<b>100.00%</b>	<b>100.00%</b>	<b>100.00%</b>	<b>100.00%</b>

Source: Census 2010 Redistricting Data (Public Law 94-171) Summary file, Arizona  
 Tabulation: Research Advisory Services, Inc., Phoenix AZ (602) 230-8580

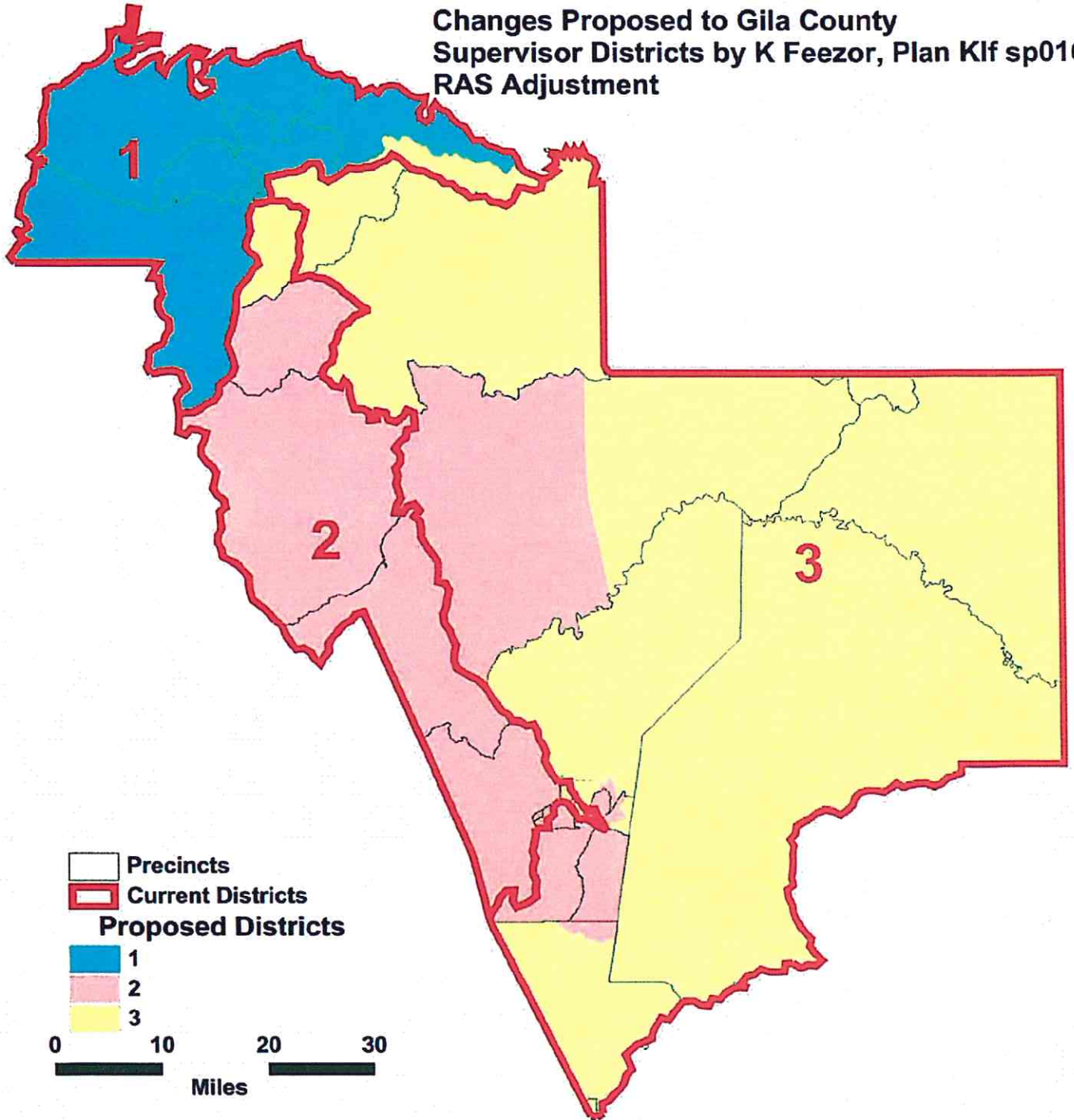
**Race and Origin Composition of Current and Proposed Gila County  
Supervisory Districts**  
Plan submitted by: TJM01, RAS Adjustment



**GILA COUNTY SUPERVISORIAL DISTRICTS**  
**PLAN SUBMITTED BY: Tom Moody, RAS Adjustment TJM01**

	<b>Current</b>	<b>Proposed Plan</b>	<b>Change</b>
Population, District 1	18,105	17,870	-235
Population, District 2	17,151	17,955	804
Population, District 3	18,341	17,772	-569
Population deviation, District 1	239	4	
Population deviation, District 2	-715	89	
Population deviation, District 3	475	-94	
Percent deviation, District 1	1.34%	0.02%	
Percent deviation, District 2	-4.00%	0.50%	
Percent deviation, District 3	2.66%	-0.52%	
Total plan deviation, number	1,190	183	
Total plan deviation, percent	6.66%	1.02%	
Percent voting-age Hispanic, District 1	6.23%	6.29%	0.06%
Percent voting-age Hispanic, District 2	24.88%	25.29%	0.41%
Percent voting-age Hispanic, District 3	16.45%	15.48%	-0.97%
Percent V-A Non-Hispanic Native American, District 1	1.75%	1.77%	0.02%
Percent V-A Non-Hispanic Native American, District 2	3.63%	3.30%	-0.33%
Percent V-A Non-Hispanic Native American, District 3	32.77%	33.64%	0.87%
Percent V-A Non-Hispanic Black, District 1	0.31%	0.31%	0.00%
Percent V-A Non-Hispanic Black, District 2	0.46%	0.49%	0.03%
Percent V-A Non-Hispanic Black, District 3	0.46%	0.43%	-0.03%
Percent voting-age total minority residents, District 1	9.13%	9.22%	0.09%
Percent voting-age total minority residents, District 2	30.16%	30.11%	-0.05%
Percent voting-age total minority residents, District 3	50.28%	50.29%	0.01%

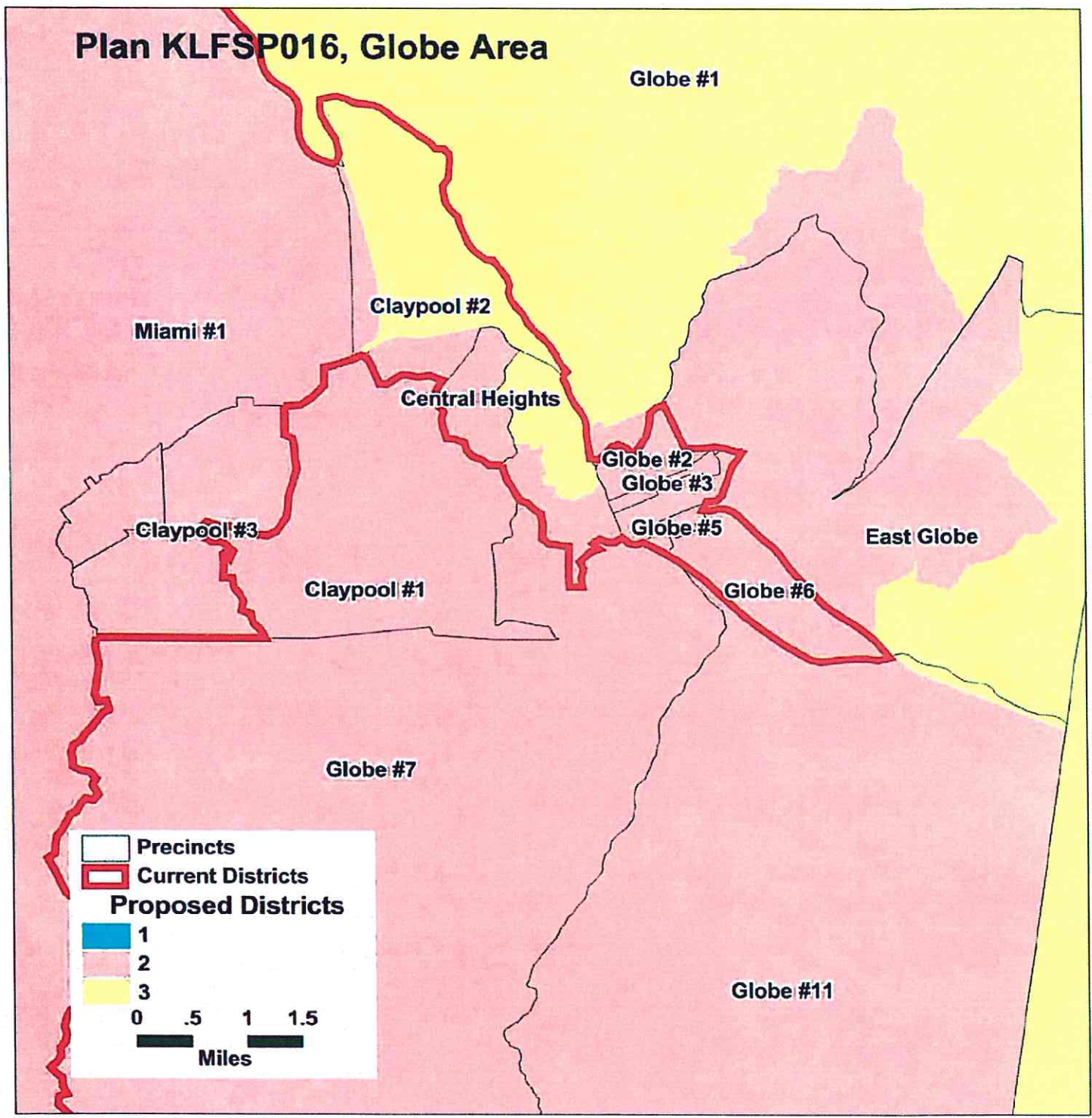
**Changes Proposed to Gila County  
Supervisor Districts by K Feezor, Plan Klif sp016  
RAS Adjustment**







# Plan KLFSP016, Globe Area



**GILA COUNTY SUPERVISORIAL DISTRICTS  
TOTAL POPULATION BY RACE AND HISPANIC ORIGIN  
PLAN SUBMITTED BY: K Feezor, RAS Adjustment kif sp016**

	<u>Number:</u>	<u>District 1</u>	<u>District 2</u>	<u>District 3</u>	<u>Total, All Districts</u>
Hispanic, of any race	1,465	5,257	2,866	9,588	
Non-Hispanic White	15,891	11,751	7,656	35,298	
Non-Hispanic Black	85	98	65	248	
Non-Hispanic American Indian	356	677	6,942	7,975	
Non-Hispanic Asian	114	126	81	321	
Non-Hispanic Hawaiian	22	5	12	39	
Non-Hispanic other race	20	24	22	66	
Non-Hispanic two or more races	13	23	26	62	
<b>Total Population</b>	<b>17,966</b>	<b>17,961</b>	<b>17,670</b>	<b>53,597</b>	
<b>Percent:</b>					
Hispanic, of any race	8.15%	29.27%	16.22%	17.89%	
Non-Hispanic White	88.45%	65.43%	43.33%	65.86%	
Non-Hispanic Black	0.47%	0.55%	0.37%	0.46%	
Non-Hispanic American Indian	1.98%	3.77%	39.29%	14.88%	
Non-Hispanic Asian	0.63%	0.70%	0.46%	0.60%	
Non-Hispanic Hawaiian	0.12%	0.03%	0.07%	0.07%	
Non-Hispanic other race	0.11%	0.13%	0.12%	0.12%	
Non-Hispanic two or more races	0.07%	0.13%	0.15%	0.12%	
<b>Total Percent</b>	<b>100.00%</b>	<b>100.00%</b>	<b>100.00%</b>	<b>100.00%</b>	
Ideal Population	17,866	17,866	17,866	<b>Total</b> 17,866	
Total Population	17,966	17,961	17,670	deviation: 296	
Numeric deviation from Ideal Value	100	95	-196	-1.10%	
Percent deviation from Ideal Value	0.56%	0.53%	-1.10%	<b>1.66%</b>	

Source: Census 2010 Redistricting Data (Public Law 94-171) Summary file, Arizona  
Tabulation: Research Advisory Services, Inc., Phoenix AZ (602) 230-9580

**GILA COUNTY SUPERVISORIAL DISTRICTS  
VOTING-AGE POPULATION BY RACE AND HISPANIC ORIGIN  
PLAN SUBMITTED BY: K Feezor, RAS Adjustment kif sp016**

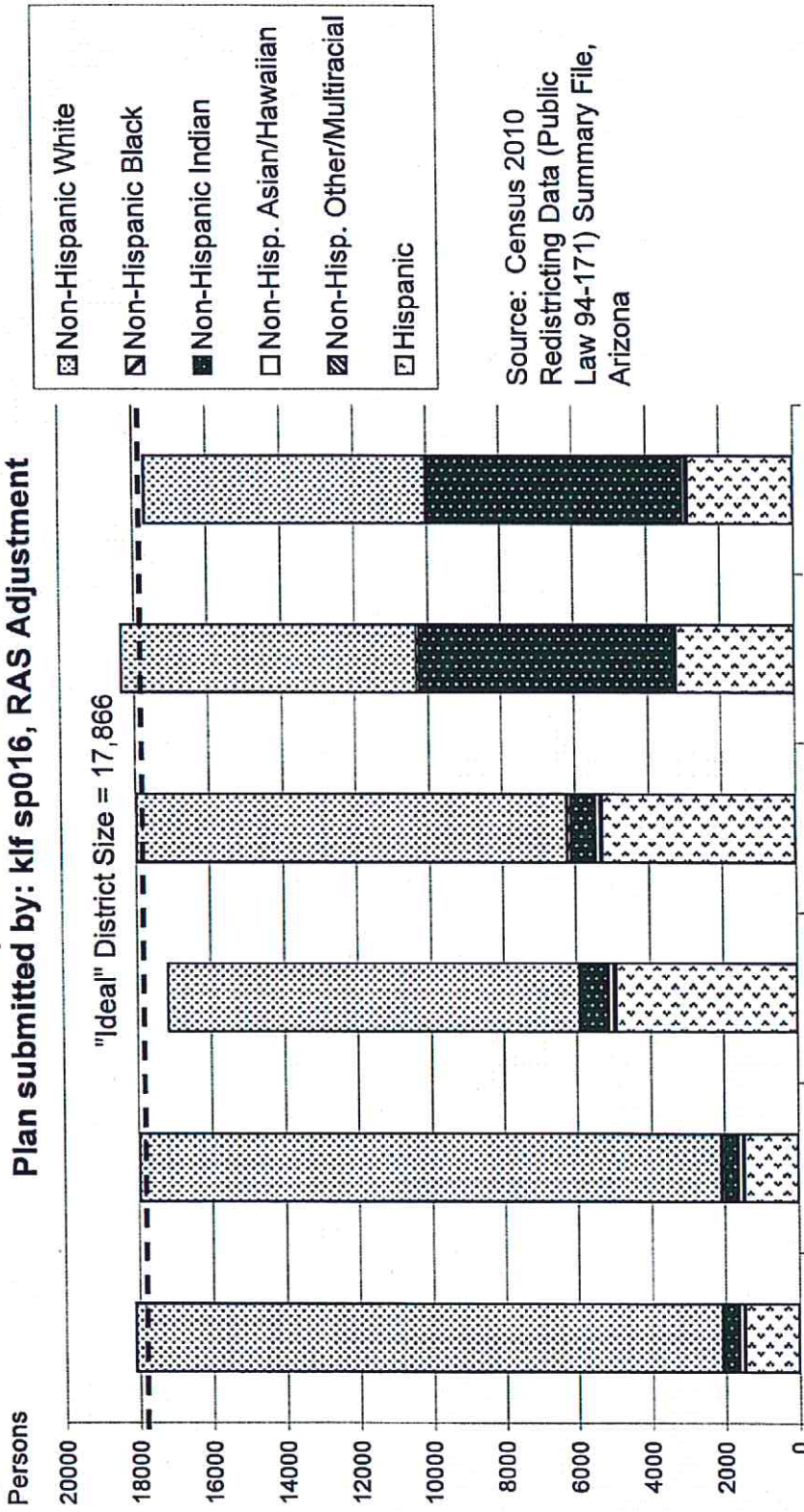
<u>Voting-Age Number:</u>	<u>District 1</u>	<u>District 2</u>	<u>District 3</u>	<u>Total, All Districts</u>
Hispanic, of any race	945	3,629	1,945	<b>6,519</b>
Non-Hispanic White	13,682	9,792	6,448	<b>29,922</b>
Non-Hispanic Black	47	76	48	<b>171</b>
Non-Hispanic American Indian	265	457	4,423	<b>5,145</b>
Non-Hispanic Asian	90	97	65	<b>252</b>
Non-Hispanic Hawaiian	17	3	10	<b>30</b>
Non-Hispanic other race	9	16	19	<b>44</b>
Non-Hispanic two or more races	11	16	16	<b>43</b>
<b>Voting-Age Population</b>	<b>15,066</b>	<b>14,086</b>	<b>12,974</b>	<b>42,126</b>

<u>Voting-Age Percent:</u>	<u>District 1</u>	<u>District 2</u>	<u>District 3</u>	<u>Total, All Districts</u>
Hispanic, of any race	6.27%	25.76%	14.99%	<b>15.48%</b>
Non-Hispanic White	90.81%	69.52%	49.70%	<b>71.03%</b>
Non-Hispanic Black	0.31%	0.54%	0.37%	<b>0.41%</b>
Non-Hispanic American Indian	1.76%	3.24%	34.09%	<b>12.21%</b>
Non-Hispanic Asian	0.60%	0.69%	0.50%	<b>0.60%</b>
Non-Hispanic Hawaiian	0.11%	0.02%	0.08%	<b>0.07%</b>
Non-Hispanic other race	0.06%	0.11%	0.15%	<b>0.10%</b>
Non-Hispanic two or more races	0.07%	0.11%	0.12%	<b>0.10%</b>
<b>Voting-Age Percent</b>	<b>100.00%</b>	<b>100.00%</b>	<b>100.00%</b>	<b>100.00%</b>

Source: Census 2010 Redistricting Data (Public Law 94-171) Summary file, Arizona  
 Tabulation: Research Advisory Services, Inc., Phoenix AZ (602) 230-9580

# Race and Origin Composition of Current and Proposed Gila County Supervisorial Districts

Plan submitted by: klf sp016, RAS Adjustment



**GILA COUNTY SUPERVISORIAL DISTRICTS**

**PLAN SUBMITTED BY: K Feezor, RAS Adjustment klf sp016**

	<b>Current</b>	<b>Proposed Plan</b>	<b>Change</b>
Population, District 1	18,105	17,966	-139
Population, District 2	17,151	17,961	810
Population, District 3	18,341	17,670	-671
Population deviation, District 1	239	100	
Population deviation, District 2	-715	95	
Population deviation, District 3	475	-196	
Percent deviation, District 1	1.34%	0.56%	
Percent deviation, District 2	-4.00%	0.53%	
Percent deviation, District 3	2.66%	-1.10%	
Total plan deviation, number	1,190	296	
Total plan deviation, percent	6.66%	1.66%	
Percent voting-age Hispanic, District 1	6.23%	6.27%	0.04%
Percent voting-age Hispanic, District 2	24.88%	25.76%	0.88%
Percent voting-age Hispanic, District 3	16.45%	14.99%	-1.46%
Percent V-A Non-Hispanic Native American, District 1	1.75%	1.76%	0.01%
Percent V-A Non-Hispanic Native American, District 2	3.63%	3.24%	-0.39%
Percent V-A Non-Hispanic Native American, District 3	32.77%	34.09%	1.32%
Percent V-A Non-Hispanic Black, District 1	0.31%	0.31%	0.00%
Percent V-A Non-Hispanic Black, District 2	0.46%	0.54%	0.08%
Percent V-A Non-Hispanic Black, District 3	0.46%	0.37%	-0.09%
Percent voting-age total minority residents, District 1	9.13%	9.19%	0.06%
Percent voting-age total minority residents, District 2	30.16%	30.48%	0.32%
Percent voting-age total minority residents, District 3	50.28%	50.30%	0.02%