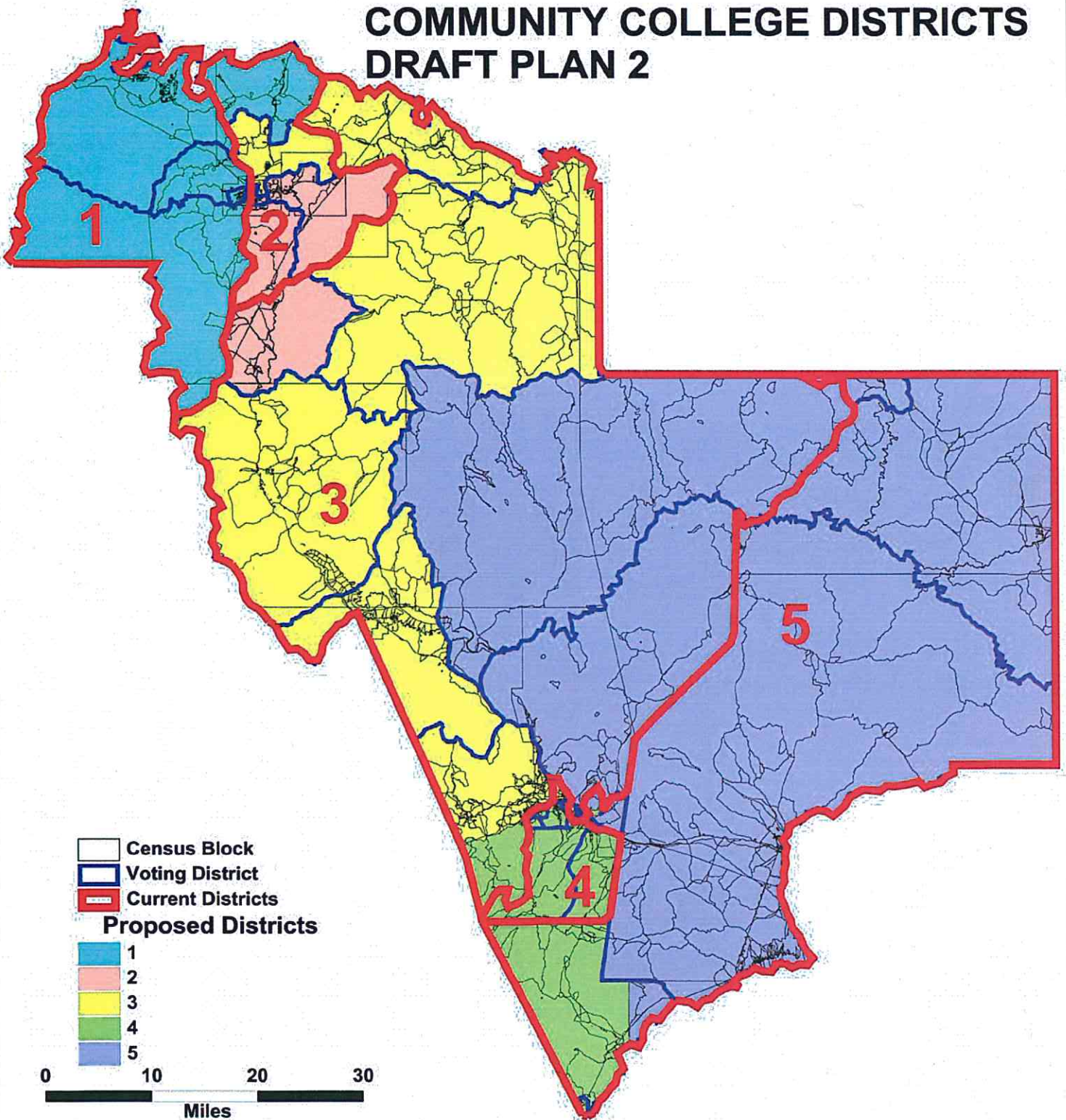
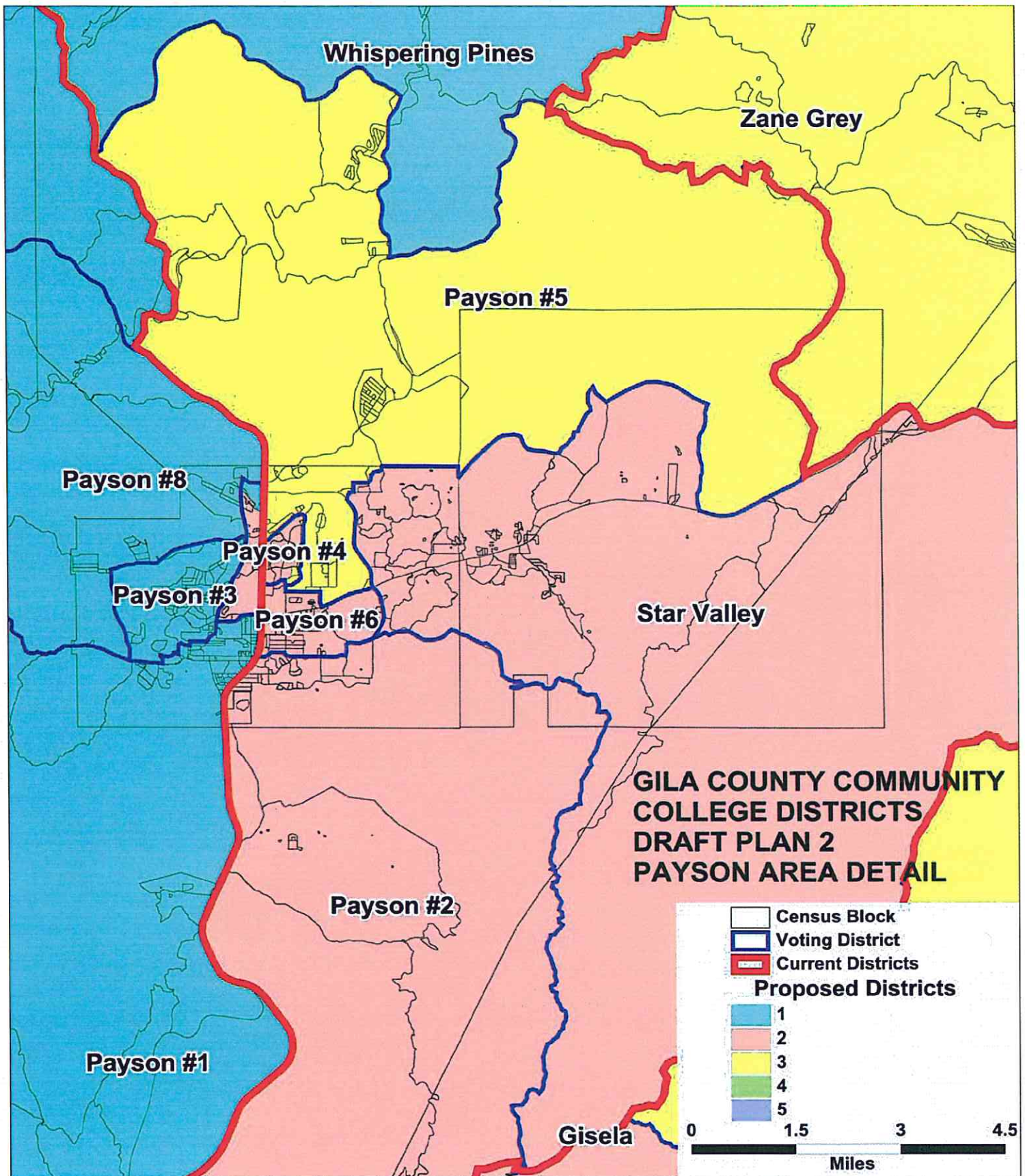
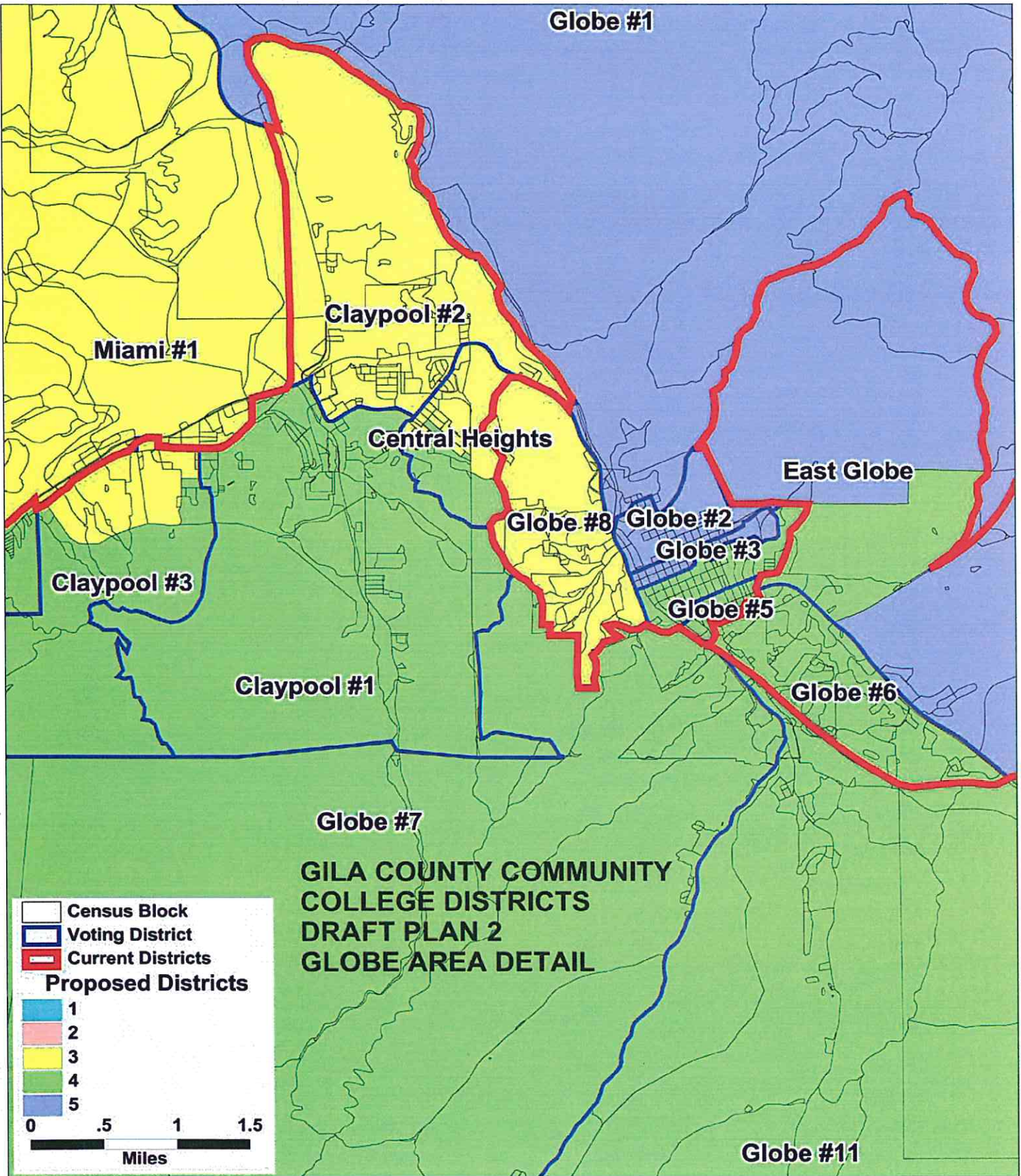


# GILA COUNTY COMMUNITY COLLEGE DISTRICTS DRAFT PLAN 2







**GILA COUNTY COMMUNITY COLLEGE DISTRICTS  
TOTAL POPULATION BY RACE AND HISPANIC ORIGIN  
DRAFT PLAN 2**

<u>Number:</u>	<u>District 1</u>	<u>District 2</u>	<u>District 3</u>	<u>District 4</u>	<u>District 5</u>	<u>Total, All Districts</u>
Hispanic, of any race	841	979	2,518	3,986	1,264	9,588
Non-Hispanic White	9,446	9,354	8,236	5,765	2,497	35,298
Non-Hispanic Black	47	44	63	51	43	248
Non-Hispanic American Indian	229	317	235	455	6,739	7,975
Non-Hispanic Asian	67	79	68	79	28	321
Non-Hispanic Hawaiian	16	9	11	3	0	39
Non-Hispanic other race	12	18	14	15	7	66
Non-Hispanic two or more races	7	12	13	14	16	62
<b>Total Population</b>	<b>10,665</b>	<b>10,812</b>	<b>11,158</b>	<b>10,368</b>	<b>10,594</b>	<b>53,597</b>

<u>Percent:</u>	<u>District 1</u>	<u>District 2</u>	<u>District 3</u>	<u>District 4</u>	<u>District 5</u>	<u>Total, All Districts</u>
Hispanic, of any race	7.89%	9.05%	22.57%	38.45%	11.93%	17.89%
Non-Hispanic White	88.57%	86.51%	73.81%	55.60%	23.57%	65.86%
Non-Hispanic Black	0.44%	0.41%	0.56%	0.49%	0.41%	0.46%
Non-Hispanic American Indian	2.15%	2.93%	2.11%	4.39%	63.61%	14.88%
Non-Hispanic Asian	0.63%	0.73%	0.61%	0.76%	0.26%	0.60%
Non-Hispanic Hawaiian	0.15%	0.08%	0.10%	0.03%	0.00%	0.07%
Non-Hispanic other race	0.11%	0.17%	0.13%	0.14%	0.07%	0.12%
Non-Hispanic two or more races	0.07%	0.11%	0.12%	0.14%	0.15%	0.12%
<b>Total Percent</b>	<b>100.00%</b>	<b>100.00%</b>	<b>100.00%</b>	<b>100.00%</b>	<b>100.00%</b>	<b>100.00%</b>

Ideal Population	10,719	10,719	10,719	10,719	10,719	<b>Total</b> 10,719
Total Population	10,665	10,812	11,158	10,368	10,594	<b>deviation:</b> -125
Numeric deviation from Ideal Value	-54	93	439	-351	-125	790
Percent deviation from Ideal Value	-0.51%	0.86%	4.09%	-3.28%	-1.17%	7.37%

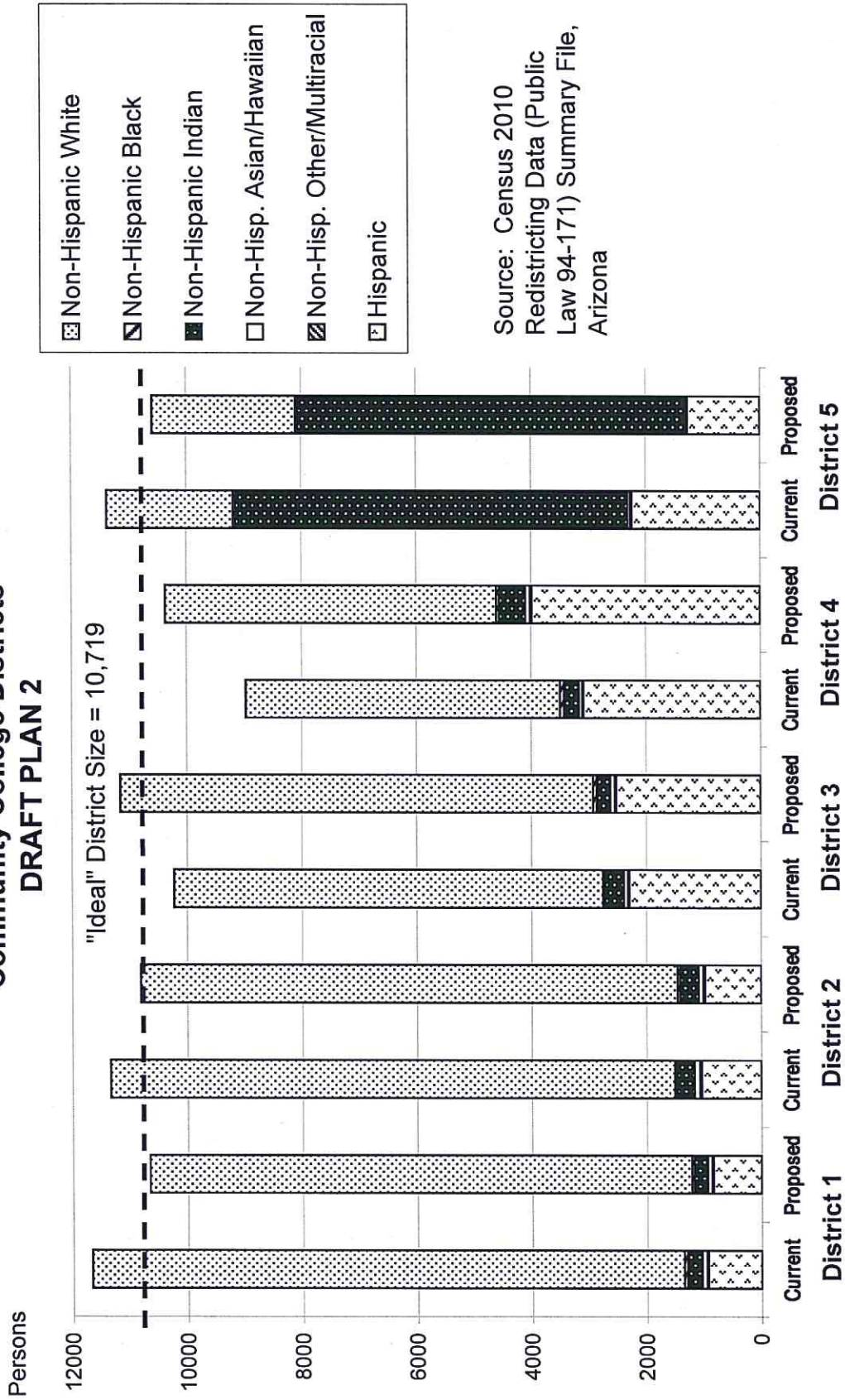
Source: Census 2010 Redistricting Data (Public Law 94-171) Summary file, Arizona  
Tabulation: Research Advisory Services, Inc., Phoenix AZ (602) 230-9580

**GILA COUNTY COMMUNITY COLLEGE DISTRICTS  
VOTING-AGE POPULATIONS BY RACE AND HISPANIC ORIGIN  
DRAFT PLAN 2**

<u>Voting-Age Number:</u>	<u>District 1</u>	<u>District 2</u>	<u>District 3</u>	<u>District 4</u>	<u>District 5</u>	<u>Total, All Districts</u>
Hispanic, of any race	512	632	1,746	2,771	890	6,551
Non-Hispanic White	8,236	7,832	7,058	4,663	2,006	29,795
Non-Hispanic Black	29	24	45	31	42	171
Non-Hispanic American Indian	174	226	154	317	4,268	5,139
Non-Hispanic Asian	54	64	53	63	18	252
Non-Hispanic Hawaiian	11	8	10	1	0	30
Non-Hispanic other race	3	16	12	8	5	44
Non-Hispanic two or more races	5	8	10	9	11	43
<b><i>Voting-Age Population</i></b>	<b>9,024</b>	<b>8,810</b>	<b>9,088</b>	<b>7,863</b>	<b>7,240</b>	<b>42,025</b>
<u>Voting-Age Percent:</u>						
Hispanic, of any race	5.67%	7.17%	19.21%	35.24%	12.29%	15.59%
Non-Hispanic White	91.27%	88.90%	77.66%	59.30%	27.71%	70.90%
Non-Hispanic Black	0.32%	0.27%	0.50%	0.39%	0.58%	0.41%
Non-Hispanic American Indian	1.93%	2.57%	1.69%	4.03%	58.95%	12.23%
Non-Hispanic Asian	0.60%	0.73%	0.58%	0.80%	0.25%	0.60%
Non-Hispanic Hawaiian	0.12%	0.09%	0.11%	0.01%	0.00%	0.07%
Non-Hispanic other race	0.03%	0.18%	0.13%	0.10%	0.07%	0.10%
Non-Hispanic two or more races	0.06%	0.09%	0.11%	0.11%	0.15%	0.10%
<b><i>Voting-Age Percent</i></b>	<b>100.00%</b>	<b>100.00%</b>	<b>100.00%</b>	<b>100.00%</b>	<b>100.00%</b>	<b>100.00%</b>

Source: Census 2010 Redistricting Data (Public Law 94-171) Summary file, Arizona  
 Tabulation: Research Advisory Services, Inc., Phoenix AZ (602) 230-9580

# Race and Origin Composition of Current and Proposed Gila County Community College Districts DRAFT PLAN 2



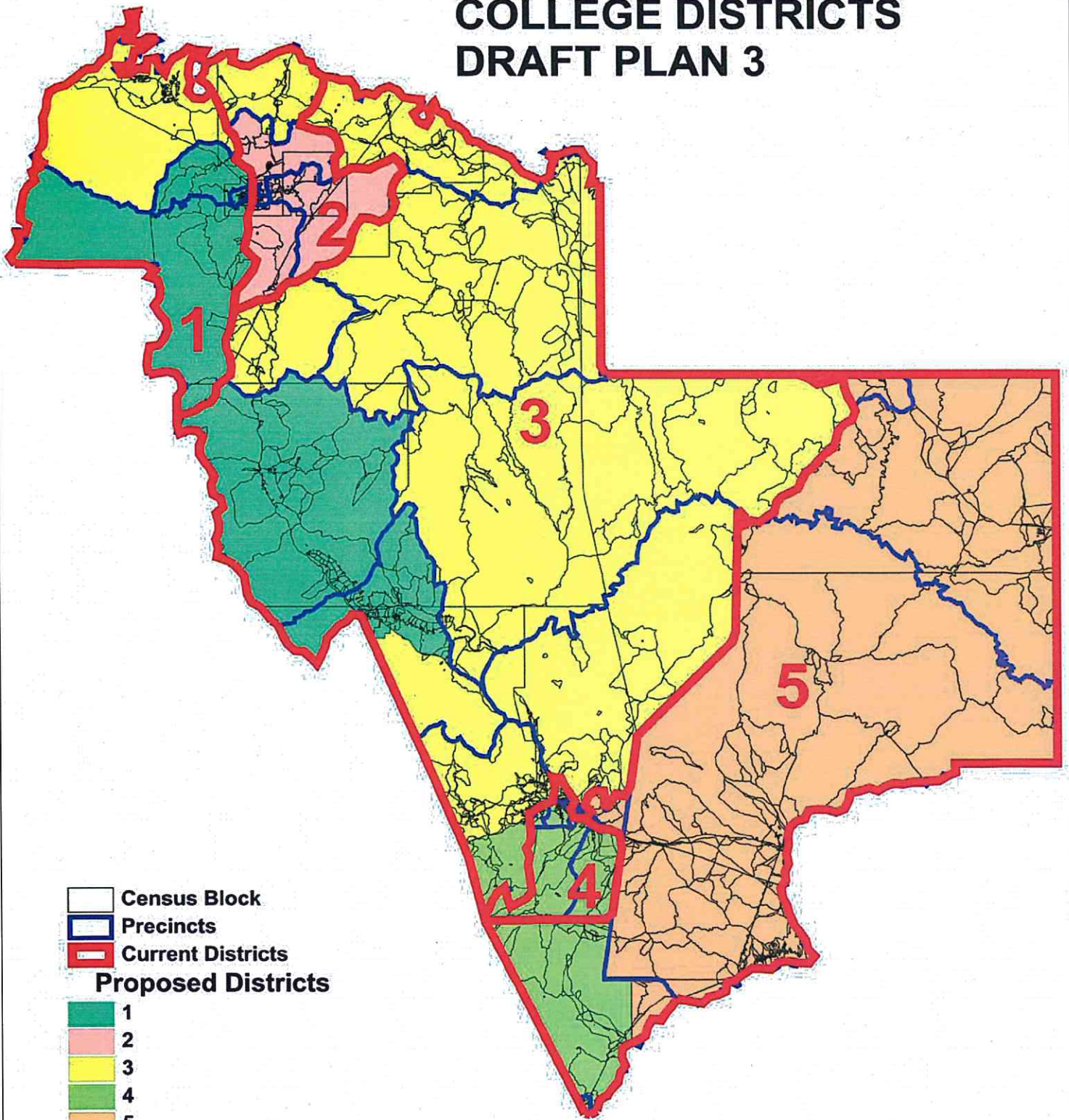
**GILA COUNTY COMMUNITY COLLEGE DISTRICTS  
DRAFT PLAN 2**









	<b>Current Districts</b>	<b>Proposed Plan</b>	<b>Change</b>
Population, District 1	11,670	10,665	-1,005
Population, District 2	11,342	10,812	-530
Population, District 3	10,231	11,158	927
Population, District 4	8,972	10,368	1,396
Population, District 5	11,382	10,594	-788
Population deviation, District 1	951	-54	
Population deviation, District 2	623	93	
Population deviation, District 3	-488	439	
Population deviation, District 4	-1,747	-351	
Population deviation, District 5	663	-125	
Percent deviation, District 1	8.87%	-0.51%	
Percent deviation, District 2	5.81%	0.86%	
Percent deviation, District 3	-4.56%	4.09%	
Percent deviation, District 4	-16.30%	-3.28%	
Percent deviation, District 5	6.18%	-1.17%	
Total plan deviation, number	2,698	790	
Total plan deviation, percent	25.17%	7.37%	
Percent voting-age Hispanic, District 1	5.89%	5.67%	-0.22%
Percent voting-age Hispanic, District 2	7.24%	7.17%	-0.07%
Percent voting-age Hispanic, District 3	19.20%	19.21%	0.01%
Percent voting-age Hispanic, District 4	31.10%	35.24%	4.14%
Percent voting-age Hispanic, District 5	19.92%	12.29%	-7.63%
Percent voting-age Non-Hispanic Native American, District 1	1.93%	1.93%	0.00%
Percent voting-age Non-Hispanic Native American, District 2	2.37%	2.57%	0.20%
Percent voting-age Non-Hispanic Native American, District 3	2.69%	1.69%	-1.00%
Percent voting-age Non-Hispanic Native American, District 4	2.40%	4.03%	1.63%
Percent voting-age Non-Hispanic Native American, District 5	55.19%	58.95%	3.76%
Percent voting-age Non-Hispanic Black, District 1	0.35%	0.32%	-0.03%
Percent voting-age Non-Hispanic Black, District 2	0.22%	0.27%	0.05%
Percent voting-age Non-Hispanic Black, District 3	0.35%	0.50%	0.15%
Percent voting-age Non-Hispanic Black, District 4	0.73%	0.39%	-0.34%
Percent voting-age Non-Hispanic Black, District 5	0.48%	0.58%	0.10%
Percent voting-age total minority residents, District 1	8.97%	8.73%	-0.24%
Percent voting-age total minority residents, District 2	10.91%	11.10%	0.19%
Percent voting-age total minority residents, District 3	23.12%	22.34%	-0.78%
Percent voting-age total minority residents, District 4	35.12%	40.70%	5.58%
Percent voting-age total minority residents, District 5	76.31%	72.29%	-4.02%

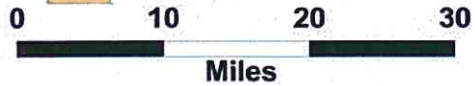
**Changes to DRAFT PLAN 2:**

1. Moved Sierra Ancha precinct from CCD3 to CCD5
2. Moved blocks at north end of Claypool 3 precinct from CCD4 to CCD3
3. Moved blocks at south end of Central Heights precinct from CCD3 to CCD4
4. Moved blocks in East Globe precincts, north of Highway 60, from CCD5 to CCD4

# GILA COUNTY COMMUNITY COLLEGE DISTRICTS DRAFT PLAN 3

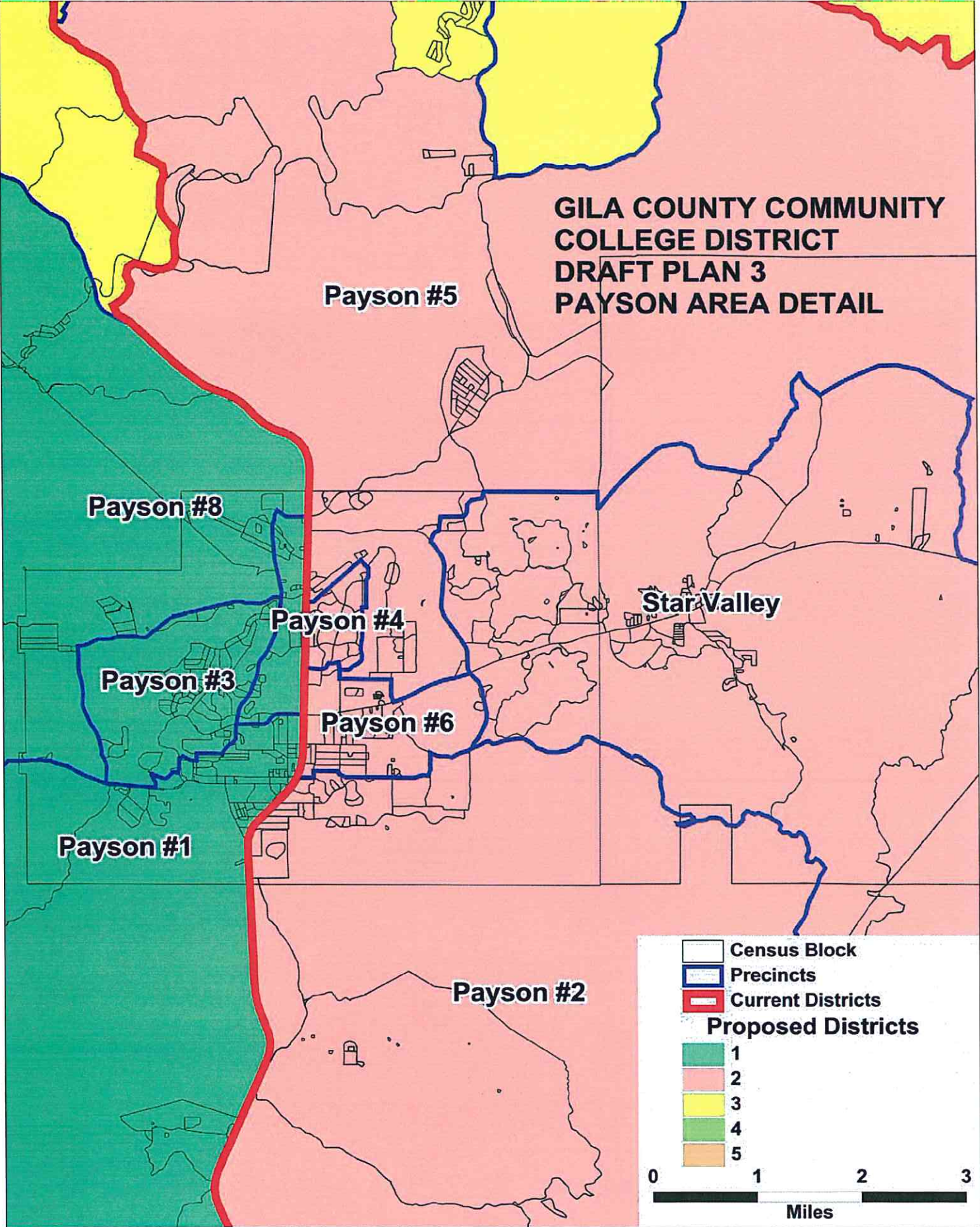


-  Census Block
-  Precincts
-  Current Districts
- Proposed Districts**
-  1
-  2
-  3
-  4
-  5





**GILA COUNTY COMMUNITY COLLEGE DISTRICT  
DRAFT PLAN 3  
PAYSON AREA DETAIL**



Payson #8

Payson #5

Payson #4









Star Valley

Payson #3

Payson #6

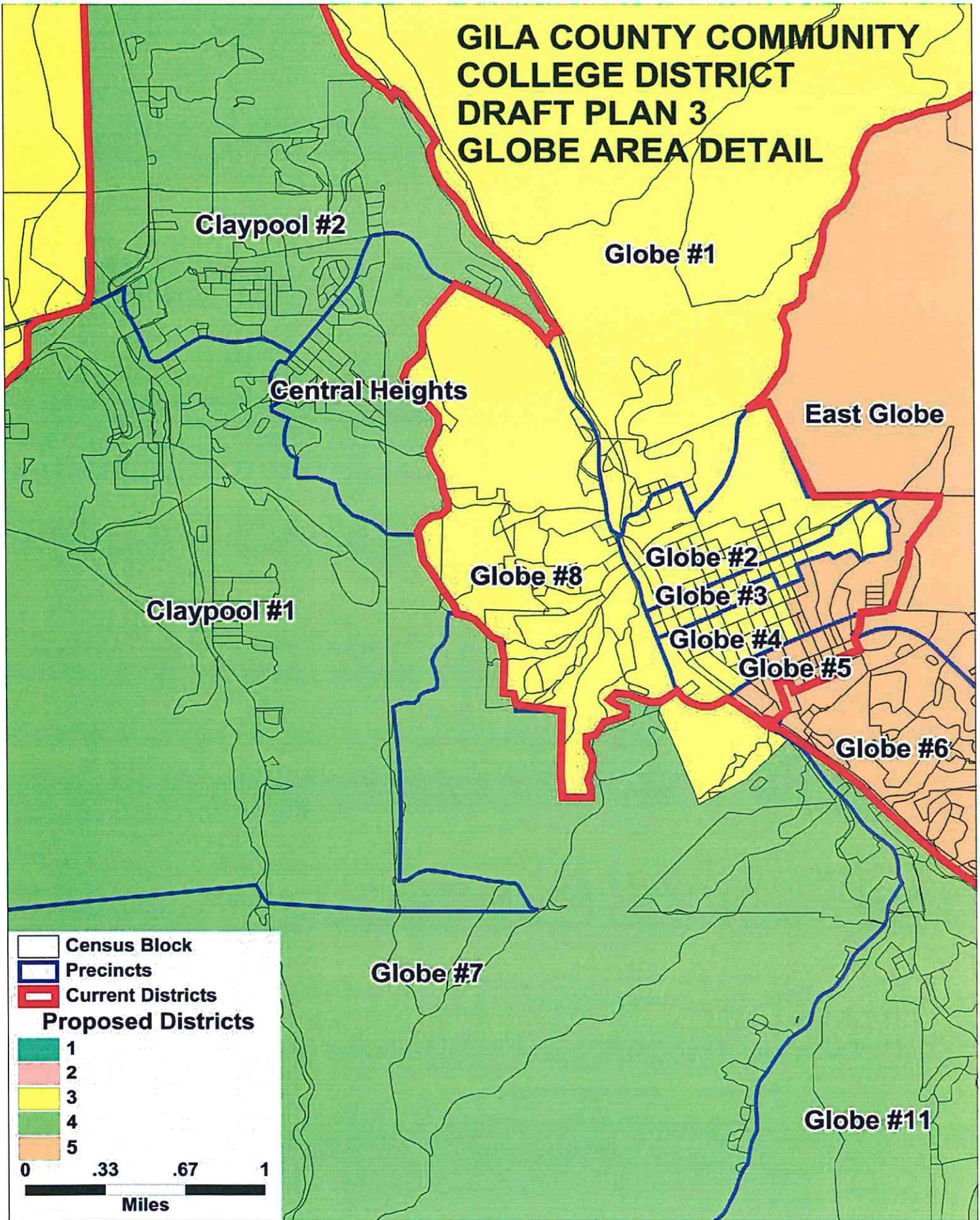
Payson #1

Payson #2

-  Census Block
-  Precincts
-  Current Districts
- Proposed Districts**
-  1
-  2
-  3
-  4
-  5



# GILA COUNTY COMMUNITY COLLEGE DISTRICT DRAFT PLAN 3 GLOBE AREA DETAIL



**GILA COUNTY COMMUNITY COLLEGE DISTRICTS  
TOTAL POPULATION BY RACE AND HISPANIC ORIGIN  
DRAFT PLAN 3**

<u>Number:</u>	<u>District 1</u>	<u>District 2</u>	<u>District 3</u>	<u>District 4</u>	<u>District 5</u>	<u>Total, All Districts</u>
Hispanic, of any race	936	1,019	2,060	4,115	1,458	9,588
Non-Hispanic White	9,313	9,328	8,479	5,867	2,311	35,298
Non-Hispanic Black	61	39	33	74	41	248
Non-Hispanic American Indian	238	301	306	287	6,843	7,975
Non-Hispanic Asian	57	80	74	51	59	321
Non-Hispanic Hawaiian	9	8	13	8	1	39
Non-Hispanic other race	16	17	11	16	6	66
Non-Hispanic two or more races	7	14	13	7	21	62
<b>Total Population</b>	<b>10,637</b>	<b>10,806</b>	<b>10,989</b>	<b>10,425</b>	<b>10,740</b>	<b>53,597</b>
<u>Percent:</u>						
Hispanic, of any race	8.80%	9.43%	18.75%	39.47%	13.58%	17.89%
Non-Hispanic White	87.55%	86.32%	77.16%	56.28%	21.52%	65.86%
Non-Hispanic Black	0.57%	0.36%	0.30%	0.71%	0.38%	0.46%
Non-Hispanic American Indian	2.24%	2.79%	2.78%	2.75%	63.72%	14.88%
Non-Hispanic Asian	0.54%	0.74%	0.67%	0.49%	0.55%	0.60%
Non-Hispanic Hawaiian	0.08%	0.07%	0.12%	0.08%	0.01%	0.07%
Non-Hispanic other race	0.15%	0.16%	0.10%	0.15%	0.06%	0.12%
Non-Hispanic two or more races	0.07%	0.13%	0.12%	0.07%	0.20%	0.12%
<b>Total Percent</b>	<b>100.00%</b>	<b>100.00%</b>	<b>100.00%</b>	<b>100.00%</b>	<b>100.00%</b>	<b>100.00%</b>
Ideal Population	10,719	10,719	10,719	10,719	10,719	<b>Total</b> 10,719
Total Population	10,637	10,806	10,989	10,425	10,740	<b>deviation:</b> 10,740
Numeric deviation from Ideal Value	-82	87	270	-294	21	<b>564</b>
Percent deviation from Ideal Value	-0.77%	0.81%	2.52%	-2.75%	0.19%	<b>5.26%</b>

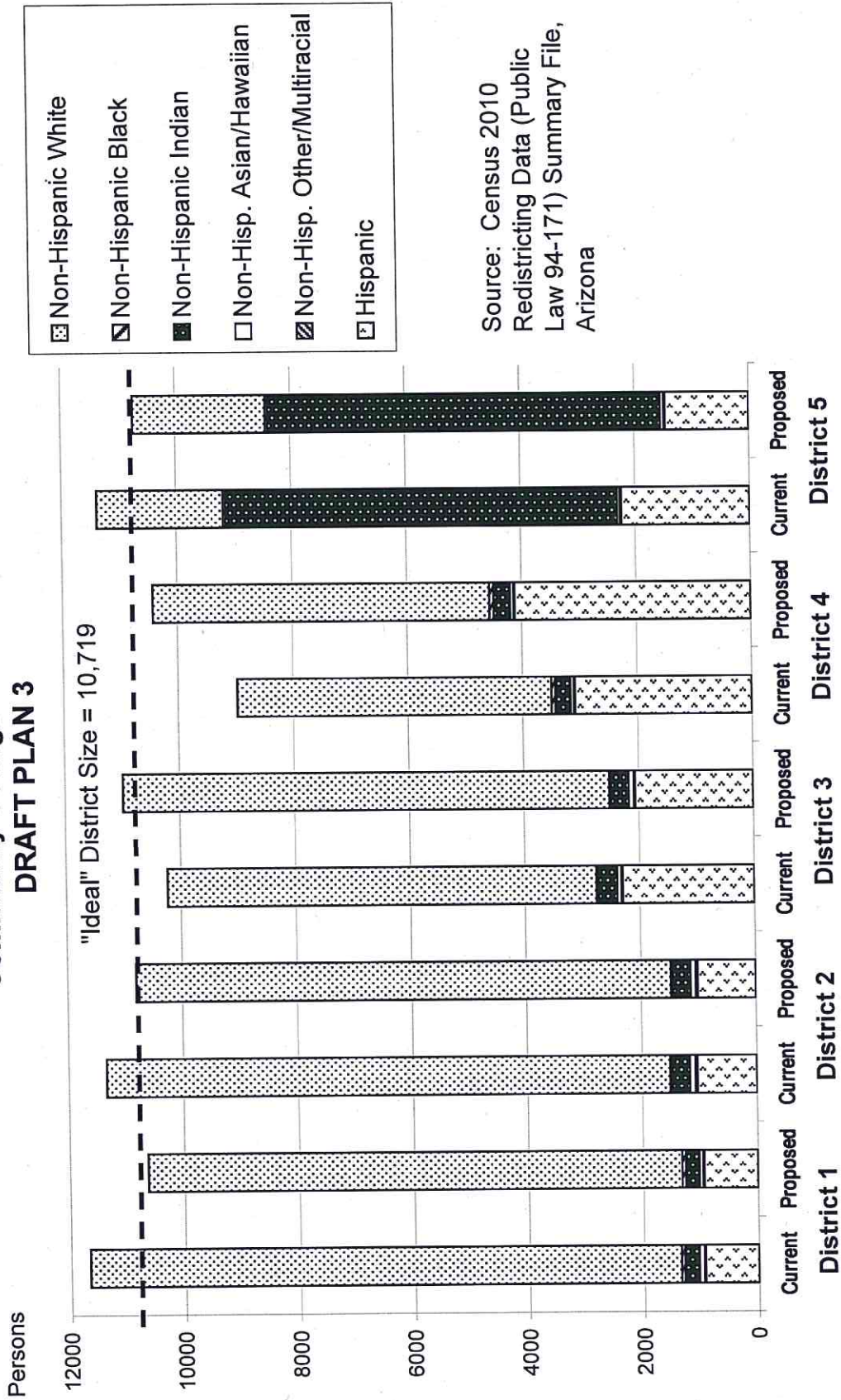
Source: Census 2010 Redistricting Data (Public Law 94-171) Summary file, Arizona  
Tabulation: Research Advisory Services, Inc., Phoenix AZ (602) 230-9580

**GILA COUNTY COMMUNITY COLLEGE DISTRICTS  
VOTING-AGE POPULATIONS BY RACE AND HISPANIC ORIGIN  
DRAFT PLAN 3**

<u>Voting-Age Number:</u>	<u>District 1</u>	<u>District 2</u>	<u>District 3</u>	<u>District 4</u>	<u>District 5</u>	<u>Total, All Districts</u>
Hispanic, of any race	581	662	1,458	2,859	959	6,519
Non-Hispanic White	8,012	7,920	7,367	4,673	1,950	29,922
Non-Hispanic Black	40	21	20	50	40	171
Non-Hispanic American Indian	178	218	219	184	4,346	5,145
Non-Hispanic Asian	46	65	56	40	45	252
Non-Hispanic Hawaiian	8	7	9	5	1	30
Non-Hispanic other race	7	13	9	10	5	44
Non-Hispanic two or more races	6	10	9	6	12	43
<b>Voting-Age Population</b>	<b>8,878</b>	<b>8,916</b>	<b>9,147</b>	<b>7,827</b>	<b>7,358</b>	<b>42,126</b>
<b>Voting-Age Percent:</b>						
Hispanic, of any race	6.54%	7.42%	15.94%	36.53%	13.03%	15.48%
Non-Hispanic White	90.25%	88.83%	80.54%	59.70%	26.50%	71.03%
Non-Hispanic Black	0.45%	0.24%	0.22%	0.64%	0.54%	0.41%
Non-Hispanic American Indian	2.00%	2.45%	2.39%	2.35%	59.06%	12.21%
Non-Hispanic Asian	0.52%	0.73%	0.61%	0.51%	0.61%	0.60%
Non-Hispanic Hawaiian	0.09%	0.08%	0.10%	0.06%	0.01%	0.07%
Non-Hispanic other race	0.08%	0.15%	0.10%	0.13%	0.07%	0.10%
Non-Hispanic two or more races	0.07%	0.11%	0.10%	0.08%	0.16%	0.10%
<b>Voting-Age Percent</b>	<b>100.00%</b>	<b>100.00%</b>	<b>100.00%</b>	<b>100.00%</b>	<b>100.00%</b>	<b>100.00%</b>

Source: Census 2010 Redistricting Data (Public Law 94-171) Summary file, Arizona  
 Tabulation: Research Advisory Services, Inc., Phoenix AZ (602) 230-9580

# Race and Origin Composition of Current and Proposed Gila County Community College Districts DRAFT PLAN 3



Source: Census 2010  
Redistricting Data (Public  
Law 94-171) Summary File,  
Arizona

**GILA COUNTY COMMUNITY COLLEGE DISTRICTS  
DRAFT PLAN 3**

	<b>Current Districts</b>	<b>Proposed Plan</b>	<b>Change</b>
Population, District 1	11,670	10,637	-1,033
Population, District 2	11,342	10,806	-536
Population, District 3	10,231	10,989	758
Population, District 4	8,972	10,425	1,453
Population, District 5	11,382	10,740	-642
Population deviation, District 1	951	-82	
Population deviation, District 2	623	87	
Population deviation, District 3	-488	270	
Population deviation, District 4	-1,747	-294	
Population deviation, District 5	663	21	
Percent deviation, District 1	8.87%	-0.77%	
Percent deviation, District 2	5.81%	0.81%	
Percent deviation, District 3	-4.56%	2.52%	
Percent deviation, District 4	-16.30%	-2.75%	
Percent deviation, District 5	6.18%	0.19%	
Total plan deviation, number	2,698	564	
Total plan deviation, percent	25.17%	5.26%	
Percent voting-age Hispanic, District 1	5.89%	6.54%	0.65%
Percent voting-age Hispanic, District 2	7.24%	7.42%	0.18%
Percent voting-age Hispanic, District 3	19.20%	15.94%	-3.26%
Percent voting-age Hispanic, District 4	31.10%	36.53%	5.43%
Percent voting-age Hispanic, District 5	19.92%	13.03%	-6.89%
Percent voting-age Non-Hispanic Native American, District 1	1.93%	2.00%	0.07%
Percent voting-age Non-Hispanic Native American, District 2	2.37%	2.45%	0.08%
Percent voting-age Non-Hispanic Native American, District 3	2.69%	2.39%	-0.30%
Percent voting-age Non-Hispanic Native American, District 4	2.40%	2.35%	-0.05%
Percent voting-age Non-Hispanic Native American, District 5	55.19%	59.06%	3.87%
Percent voting-age Non-Hispanic Black, District 1	0.35%	0.45%	0.10%
Percent voting-age Non-Hispanic Black, District 2	0.22%	0.24%	0.02%
Percent voting-age Non-Hispanic Black, District 3	0.35%	0.22%	-0.13%
Percent voting-age Non-Hispanic Black, District 4	0.73%	0.64%	-0.09%
Percent voting-age Non-Hispanic Black, District 5	0.48%	0.54%	0.06%
Percent voting-age total minority residents, District 1	8.97%	9.75%	0.78%
Percent voting-age total minority residents, District 2	10.91%	11.17%	0.26%
Percent voting-age total minority residents, District 3	23.12%	19.46%	-3.66%
Percent voting-age total minority residents, District 4	35.12%	40.30%	5.18%
Percent voting-age total minority residents, District 5	76.31%	73.50%	-2.81%

Changes to DRAFT PLAN 3:

1. Moved Carrizo precinct from CCD3 to CCD5
2. Moved Hayden, Winkelman and the non-reserv. part of Christmas precinct from CCD5 to CCD3
3. Moved Miami #1 precinct south of Hwy 60 from CCD3 to CCD4
4. Moved six blocks at the north end of Globe #7 from CCD4 to CCD3

**GILA COUNTY**  
**PROJECTED REDISTRICTING TIMELINE - August 15, 2011**  
**Board of Supervisors and Community College**

Redistricting Advisory Committee presents recommendations to Board of Supervisors	August 15, 2011
Board discusses mapping plan alternatives at Work Session	August 23, 2011
Board approves mapping plan alternatives to be published and presented at second round of public meetings	September 6, 2011
Maps advertised in newspapers, website, other media	September 6-16, 2011
Second round of public meetings to present mapping plan alternatives	September 6-16, 2011
Citizen comments due	September 16, 2011
Board discusses mapping plan alternatives at Work Session	September 20, 2011
Board approves final supervisorial and college district mapping plans	October 3, 2011
Plans submitted to DOJ	October 6, 2011
Plans approved by DOJ	December 6, 2011
Recorder makes voter registration changes required by Board approved maps	October/ November/December, 2011
State Redistricting Commission finalizes legislative and congressional districts	October 31, 2011
Staff and consultants revise mapping boundaries as required by State plan and present to Board for approval	November 1-10, 2011
Revised mapping plans submitted for Board Approval	November 15, 2011
Revised plans submitted to DOJ	November 16, 2011
Revised plans approved by DOJ	January 16, 2012
Recorder finalizes voter registration changes necessitated by State plan changes	December, 2011/January, 2012
Presidential Preference Election	January or February, 2012 Date TBD
Candidate packets ready	February 1, 2012
Figures for required number of signatures available (as soon as received from Recorder)	April 1, 2012
First day to file Candidate Nomination Petitions	April 30, 2012
Last day to file Candidate Nomination Petitions	May 30, 2012

**CONDADO DE GILA**  
**CALENDARIO PROYECTADO PARA LA REDISTRIBUCIÓN DE DISTRITOS**  
**Junta de Supervisores y la Universidad Comunitaria**

La Comisión Consultiva de Delimitación de Distritos presenta sus recomendaciones a la Junta de Supervisores	15 de Agosto de 2011
La Junta analiza los alternativos planes de mapeo en su Sesión de Trabajo	23 de Agosto de 2011
La Junta aprueba los alternativos planes de mapeo que serán publicados y presentados en la segunda ronda de reuniones públicas.	6 de Septiembre de 2011
Mapas anunciados en los periódicos, páginas web, otros medios de comunicación	September 6-16 de 2011
Segunda ronda de reuniones públicas para presentar los alternativos planes de mapeo	September 6-16 de 2011
Fecha límite para Comentarios del Público	16 de Septiembre de 2011
La Junta analiza los alternativos planes de mapeo en su Sesión de Trabajo	20 de Septiembre de 2011
La Junta aprueba los planes finales de mapeo de los distritos de supervisión y de la universidad comunitaria	3 de Octubre de 2011
Planes presentados al DOJ [Depto de Justicia]	6 de Octubre de 2011
Planes aprobados por del DOJ	6 de Diciembre de 2011
El Registrador efectúa los cambios al registro de votantes requeridos por los mapas aprobados por la Junta	Octubre/ Noviembre/Diciembre de 2011
La Comisión Estatal de Delimitación de Distritos finaliza los distritos legislativos y del Congreso	31 de Octubre de 2011
Personal y los consultores modifican los límites de distritos como es requerido por el plan estatal y presentan esto a la Junta para su aprobación	Noviembre 1-10 de 2011
Planes de Mapeo Modificados presentados a la Junta para Aprobación	15 de Noviembre de 2011
Planes modificados presentados al DOJ	16 de Noviembre de 2011
Planes modificados aprobados por el DOJ	16 de Enero de 2012
El Registrador finaliza los cambios al registro de votantes exigido por los cambios al plan Estatal	Diciembre de 2011/Enero de 2012
Elección de Preferencia Presidencial	Enero o febrero de 2012 - Fecha a determinar
Paquetes están disponibles para Candidatos	1 de Febrero de 2012
Las cifras del número de firmas requeridas están disponibles (tan pronto como se reciban del Registrador)	1 de Abril de 2012
Primer día para presentar Solicitudes de Nominación de Candidato	30 de Abril de 2012
Ultimo día para presentar Solicitudes de Nominación de Candidato	30 de Mayo de 2012