

# GILA COUNTY REDISTRICTING PUBLIC INPUT MEETING

## PUBLIC COMMENT/QUESTION FORM

Thank you for attending today's Redistricting Public Input Meeting

We encourage the public to ask questions and/or let us know their thoughts about mapping of the Supervisor or College Districts or about the Redistricting process in general

In order for the record to properly reflect the speaker's name, address and subject matter, citizens who wish to ask questions or make comments shall complete the information below and submit this form to David Rogers at the meeting

Speakers will be limited to three (3) minutes each and County Staff reserves the right to limit the length of the Public Comment period.

No official action will be taken at this Public Meeting by any members of the Gila County Board of Supervisors or Elections Staff who may be present at the meeting; however, they may answer questions or respond to criticism.

Date \_\_\_\_\_ Your Name \_\_\_\_\_

Your mailing address \_\_\_\_\_

Your e-mail address \_\_\_\_\_

Your phone number \_\_\_\_\_

Questions, comments, or brief description of the subject to be addressed:

---

---

---

---

---

---

---

---

# REUNION DE INTERÉS PÚBLICO SOBRE LA REDISTRIBUCIÓN DE DISTRITOS EN EL CONDADO DE GILA

## FORMULARIO PARA COMENTARIO/PREGUNTA DEL PÚBLICO

Gracias por asistir esta Reunión de Interés Público sobre la Redistribución de Distritos.

Le recomendamos al público a hacer preguntas y/o hacernos saber sus opiniones en cuanto al mapeo de los Distritos de Supervisores o de la Universidad Comunitaria, o del proceso general de Redistribución de Distritos.

Para que el registro refleje correctamente el nombre, la dirección y la materia, los ciudadanos que desean presentar preguntas o comentarios durante la reunión necesitarán completar la información que se pide abajo y entregar este formulario al señor David Rogers en la reunión.

Oradores estarán limitados a tres (3) minutos cada uno y personal del Condado se reserva el derecho de limitar la duración del periodo de comentarios públicos.

Ninguna acción oficial se hará en esta reunión pública por parte de la Junta de Supervisores del Condado de Gila o del personal de elecciones del Condado que estén presentes en la reunión; sin embargo, pueden responder a preguntas o responder a las críticas.

Fecha \_\_\_\_\_ Su Nombre \_\_\_\_\_

Su Dirección Postal \_\_\_\_\_

Su Dirección de Correo Electrónico (Email) \_\_\_\_\_

Su Número de Teléfono \_\_\_\_\_

Las preguntas, comentarios, o una descripción breve de la materia que se tratará:

---

---

---

---

---

---

---

---

**GILA COUNTY REDISTRICTING**  
**INTERNET PUBLIC COMMENT FORM**

Thank you for participating in Gila County's redistricting process

The public is encouraged to let us know their thoughts about proposed mapping of the Supervisor or College Districts or about the redistricting process in general

In order for the record to properly reflect the speaker's name, address and subject matter, please complete all sections of the form below. You may submit the form on-line by clicking the "SUBMIT" button at the bottom or you may print it out and send it to the Gila County Elections Department, 5515 S Apache Ave., Ste. 900, Globe, AZ 85501. *If you have problems with the submit button, please contact the Gila County Elections Department at (928) 402-8750.*

Date \_\_\_\_\_ Your Name \_\_\_\_\_

Your mailing address \_\_\_\_\_

Your e-mail address \_\_\_\_\_

Your phone number \_\_\_\_\_

Your comments about the redistricting plan alternatives:

---

---

---

---

---

---

---

---

---

---

---

---



## PUBLIC NOTICE

**Public Notice is Hereby Given That the Gila County Board of Supervisors Will Hold a Second Round of Public Hearings for the Purpose of Receiving Public Review and Comment on Proposed Alternative Plans for Redistricting of the Board of Supervisor Districts and Proposed Alternative Plans for Redistricting of the Community College Districts**

Second Round Meetings are open to the public and are scheduled as follows::

Date	Time	Location
9/6/11	6:00 PM	Gila County Courthouse, Globe, AZ
9/7/11	9:00 AM	White Mountain Apache Tribal Council, Whiteriver, AZ
9/7/11	6:00 PM	Tonto Basin School, Tonto Basin, AZ
9/8/11	6:00 PM	Best Western Payson Inn, Payson, AZ
9/12/11	5:30 PM	Hayden Town Hall, Hayden, AZ

The proposed alternative maps will be available for viewing at these public meetings and, beginning September 6, 2011, they will be available on the Gila County Website [www.gilacountyaz.gov](http://www.gilacountyaz.gov) (click on the orange and yellow Gila County Redistricting banner and follow the links).

The public is encouraged to attend the above meetings and make comments on the Redistricting mapping alternatives. Comments may be made (1) in person at the meetings; (2) via the Gila County Website [www.gilacountyaz.gov](http://www.gilacountyaz.gov) (click on the orange and yellow Gila County Redistricting banner and follow the links to the "Internet Public Comment Form" ; (3) by sending a letter to the Gila County Department of Elections, 5515 S Apache Ave, Suite 900, Globe, AZ 85501. Questions can be directed to the Gila County Department of Elections at 928.402.8709.

The Gila County Board of Supervisors will discuss public comments received by September 16, 2011 at a Work Session to be held on September 20, 2011 at 10:00 am. The Board will adopt a final Supervisorial District plan and a final Community College District plan at the regular Board meeting to be held on Monday, October 3, 2011 at 10:00 am. These meetings are open to the public and will be held in the Board of Supervisors Hearing Room in the Gila County Courthouse, Globe, AZ. ITV will be available from the Gila County Administration Building in Payson, AZ.

## AVISO PÚBLICO

Se notifica al público por este medio que la Junta de Supervisores del Condado de Gila realizará una segunda ronda de reuniones públicas con el propósito de estudiar y discutir los planes alternativos propuestos para la redistribución de distritos de la Junta de Supervisores y los planes alternativos propuestos para la redistribución de distritos del Colegio Comunitario del Condado. Las reuniones de esta segunda ronda están abiertas al público y se llevarán a cabo de la manera siguiente:

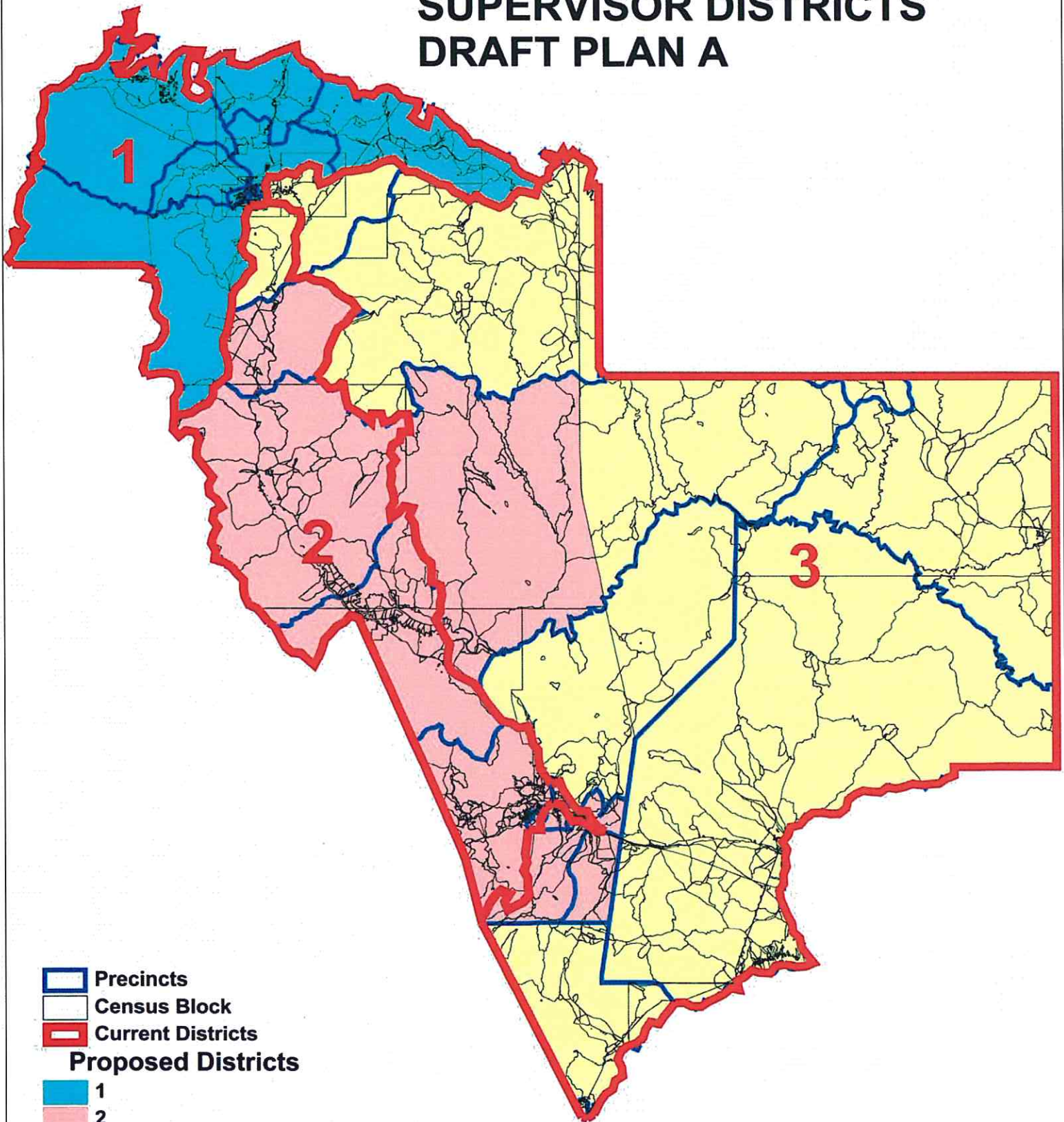
Fecha	Hora	Lugar
9/6/11	6:00 PM	Tribunal del Condado de Gila, Globe, AZ
9/7/11	9:00 AM	Consejo Tribal Apache de White Mountain , White River, AZ
9/7/11	6:00 PM	Escuela de Tonto Basin, Tonto Basin, AZ
9/8/11	6:00 PM	Best Western Payson Inn, Payson, AZ
9/12/11	5:30 PM	Municipalidad de Hayden, Hayden, AZ







Las alternativas de mapas propuestos estarán a la disposición del público durante esas reuniones y, a partir del 6 de septiembre de 2011, estarán disponibles en la página de la red el Condado de Gila en [www.gilacountyaz.gov](http://www.gilacountyaz.gov) (pulse en el aviso anaranjado y amarillo titulado "Gila County Redistricting" y siga los enlaces).

Se invita al público a asistir a las reuniones arriba mencionadas y a expresar sus comentarios sobre las alternativas de mapas de la redistribución de distritos. Los comentarios puede ser expresados (1) en persona, durante las reuniones; (2) A través de la página de la red del Condado de Gila [www.gilacountyaz.gov](http://www.gilacountyaz.gov) (pulse en el aviso anaranjado y amarillo que dice "Gila County Redistricting" y siga los enlaces para llegar a "Internet Public Comment Form"; (3) enviando una carta al Departamento Electoral del Condado de Gila, 5515 S Apache Ave, Suite 900, Globe, AZ 85501; (4) comunicándose con un miembro de la Junta de Supervisores. Si tiene preguntas llame al número telefónico 928.402.8709 del Departamento Electoral del Condado de Gila.

La Junta de Supervisores del Condado de Gila tendrá una sesión de trabajo a las 10:00 a.m. el día 20 de septiembre de 2011 para discutir los comentarios recibidos del público hasta 16 de septiembre de 2011. La Junta decidirá la versión final del mapa de Distrito de Supervisores y la versión final del mapa del Distrito del Colegio Comunitario durante la reunión ordinaria de la Junta a las 10:00 am del día lunes 3 de octubre de 2011. Ambas reuniones estarán abiertas al público y se llevarán a cabo en la Sala de Audiencias de la Junta de Supervisores en el Tribunal del Condado de Gila, en Globe, Arizona. La sesión se transmitirá por televisión interactiva en la sala de conferencias del edificio administrativo del Condado de Gila en Payson, Arizona.

# GILA COUNTY SUPERVISOR DISTRICTS DRAFT PLAN A



-  Precincts
-  Census Block
-  Current Districts
- Proposed Districts**
-  1
-  2
-  3



Whispering Pines

Zane Grey

Pine-Strawberry

# GILA COUNTY SUPERVISOR DISTRICTS DRAFT PLAN A PAYSON AREA DETAIL

Payson #5

Payson #8

Payson #4





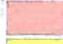

Star Valley

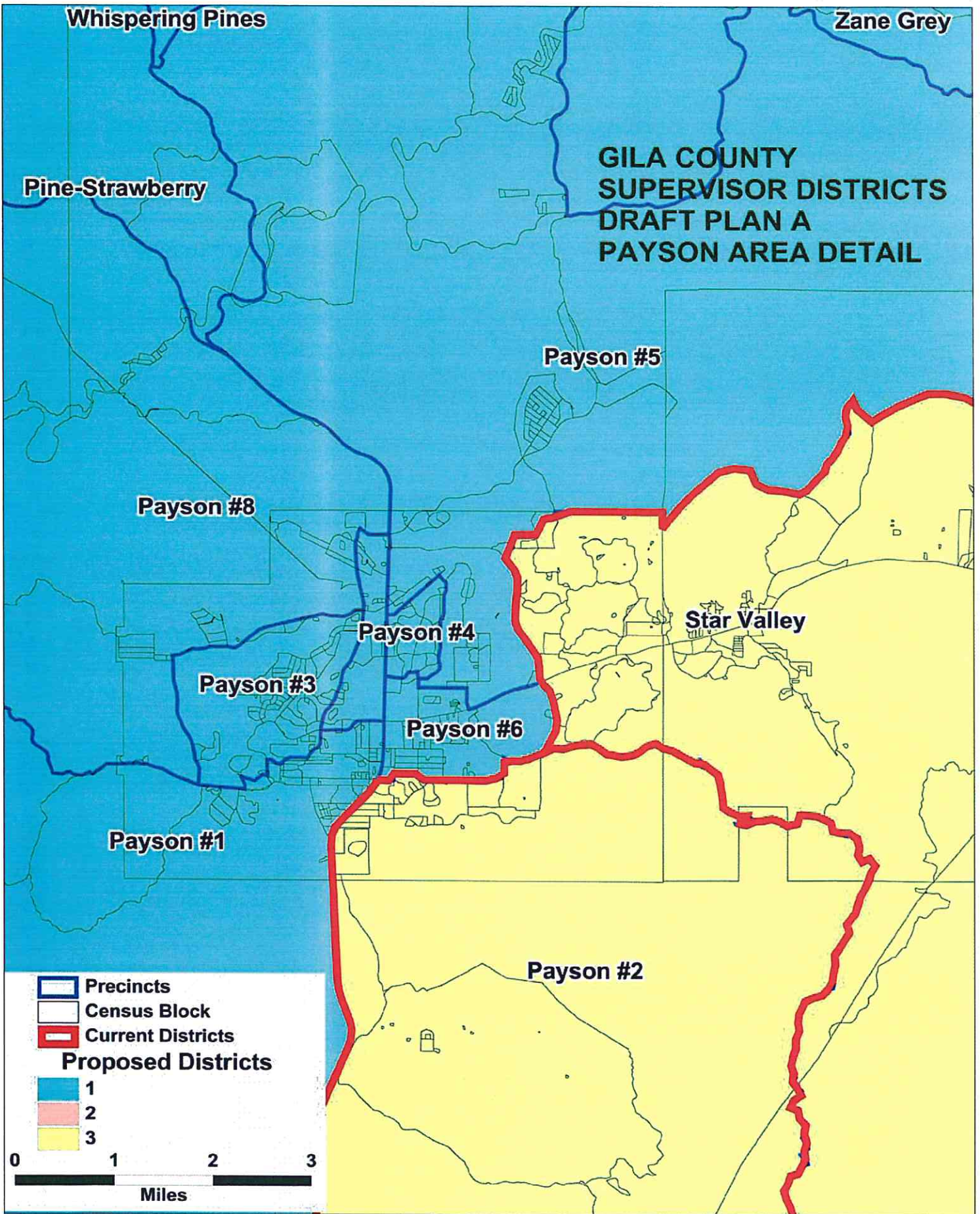
Payson #3

Payson #6

Payson #1

Payson #2

-  Precincts
  -  Census Block
  -  Current Districts
- Proposed Districts**
-  1
  -  2
  -  3





Globe #1

# GILA COUNTY SUPERVISOR DISTRICTS DRAFT PLAN A GLOBE AREA DETAIL

Claypool #2

Miami #1

Central Heights

East Globe

Claypool #1

Globe #8

Globe #2

Globe #3


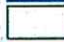


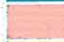

Globe #4

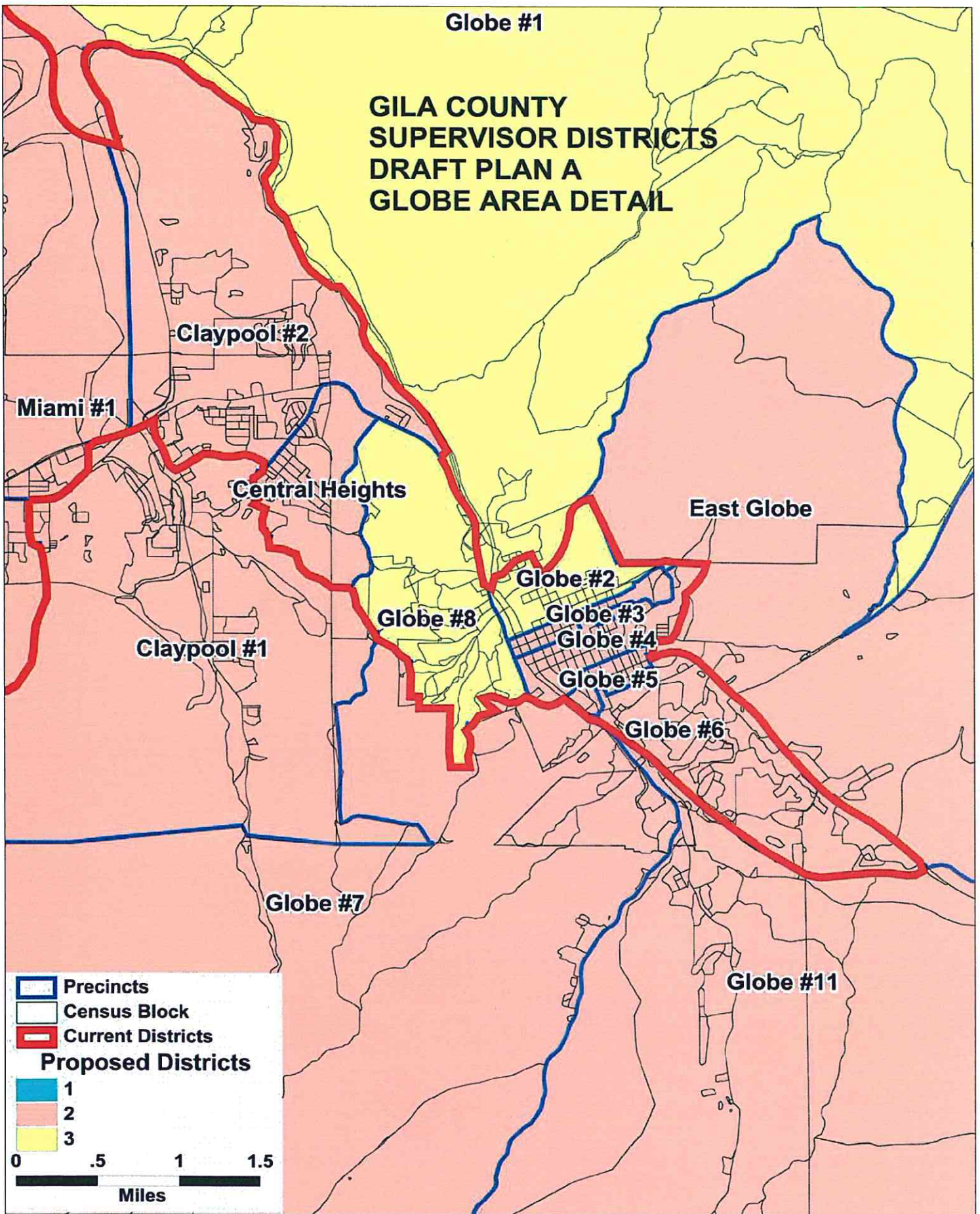
Globe #5

Globe #6

Globe #7

Globe #11

-  Precincts
  -  Census Block
  -  Current Districts
- Proposed Districts**
-  1
  -  2
  -  3



**GILA COUNTY SUPERVISORIAL DISTRICTS  
TOTAL POPULATION BY RACE AND HISPANIC ORIGIN  
DRAFT PLAN A**

<b><u>Number:</u></b>	<b><u>District 1</u></b>	<b><u>District 2</u></b>	<b><u>District 3</u></b>	<b><u>Total, All Districts</u></b>
Hispanic, of any race	1,467	5,236	2,885	9,588
Non-Hispanic White	16,025	11,908	7,365	35,298
Non-Hispanic Black	87	126	35	248
Non-Hispanic American Indian	357	667	6,951	7,975
Non-Hispanic Asian	114	130	77	321
Non-Hispanic Hawaiian	22	10	7	39
Non-Hispanic other race	20	27	19	66
Non-Hispanic two or more races	13	17	32	62
<b>Total Population</b>	<b>18,105</b>	<b>18,121</b>	<b>17,371</b>	<b>53,597</b>
<b><u>Percent:</u></b>				
Hispanic, of any race	8.10%	28.89%	16.61%	17.89%
Non-Hispanic White	88.51%	65.71%	42.40%	65.86%
Non-Hispanic Black	0.48%	0.70%	0.20%	0.46%
Non-Hispanic American Indian	1.97%	3.68%	40.01%	14.88%
Non-Hispanic Asian	0.63%	0.72%	0.44%	0.60%
Non-Hispanic Hawaiian	0.12%	0.06%	0.04%	0.07%
Non-Hispanic other race	0.11%	0.15%	0.11%	0.12%
Non-Hispanic two or more races	0.07%	0.09%	0.18%	0.12%
<b>Total Percent</b>	<b>100.00%</b>	<b>100.00%</b>	<b>100.00%</b>	<b>100.00%</b>
Ideal Population	17,866	17,866	17,866	<b>Total deviation: 750 4.20%</b>
Total Population	18,105	18,121	17,371	
Numeric deviation from Ideal Value	239	255	-495	
Percent deviation from Ideal Value	1.34%	1.43%	-2.77%	

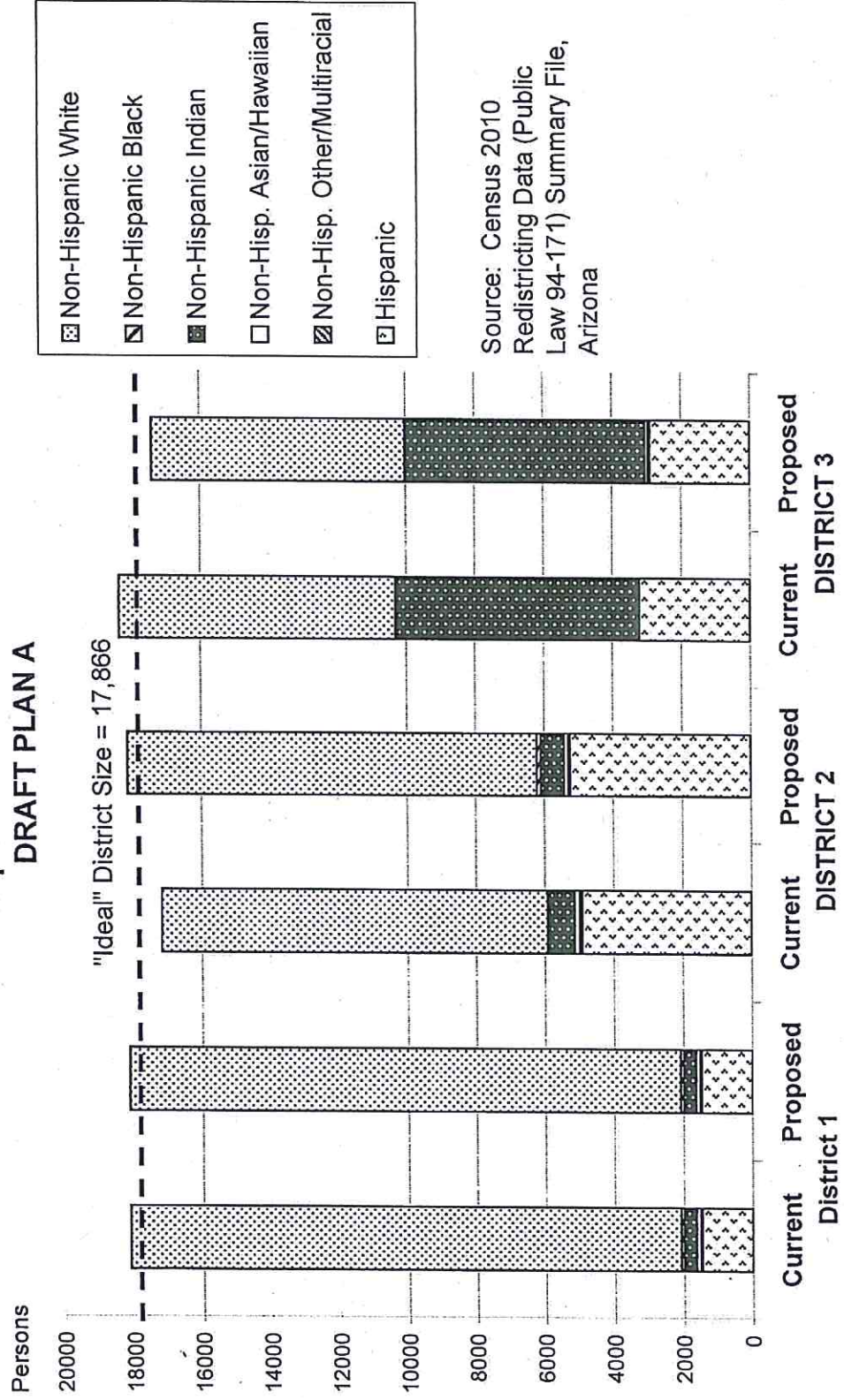
Source: Census 2010 Redistricting Data (Public Law 94-171) Summary file, Arizona  
 Tabulation: Research Advisory Services, Inc., Phoenix AZ (602) 230-9580

**GILA COUNTY SUPERVISORIAL DISTRICTS  
VOTING-AGE POPULATION BY RACE AND HISPANIC ORIGIN  
DRAFT PLAN A**

<u>Voting-Age Number:</u>	<u>District 1</u>	<u>District 2</u>	<u>District 3</u>	<u>Total, All Districts</u>
Hispanic, of any race	947	3,603	1,969	6,519
Non-Hispanic White	13,806	9,914	6,202	29,922
Non-Hispanic Black	47	101	23	171
Non-Hispanic American Indian	266	461	4,418	5,145
Non-Hispanic Asian	90	100	62	252
Non-Hispanic Hawaiian	17	7	6	30
Non-Hispanic other race	9	19	16	44
Non-Hispanic two or more races	11	13	19	43
<b><i>Voting-Age Population</i></b>	<b>15,193</b>	<b>14,218</b>	<b>12,715</b>	<b>42,126</b>
<u>Voting-Age Percent:</u>				
Hispanic, of any race	6.23%	25.34%	15.49%	15.48%
Non-Hispanic White	90.87%	69.73%	48.78%	71.03%
Non-Hispanic Black	0.31%	0.71%	0.18%	0.41%
Non-Hispanic American Indian	1.75%	3.24%	34.75%	12.21%
Non-Hispanic Asian	0.59%	0.70%	0.49%	0.60%
Non-Hispanic Hawaiian	0.11%	0.05%	0.05%	0.07%
Non-Hispanic other race	0.06%	0.13%	0.13%	0.10%
Non-Hispanic two or more races	0.07%	0.09%	0.15%	0.10%
<b><i>Voting-Age Percent</i></b>	<b>100.00%</b>	<b>100.00%</b>	<b>100.00%</b>	<b>100.00%</b>

Source: Census 2010 Redistricting Data (Public Law 94-171) Summary file, Arizona  
 Tabulation: Research Advisory Services, Inc., Phoenix AZ (602) 230-9580

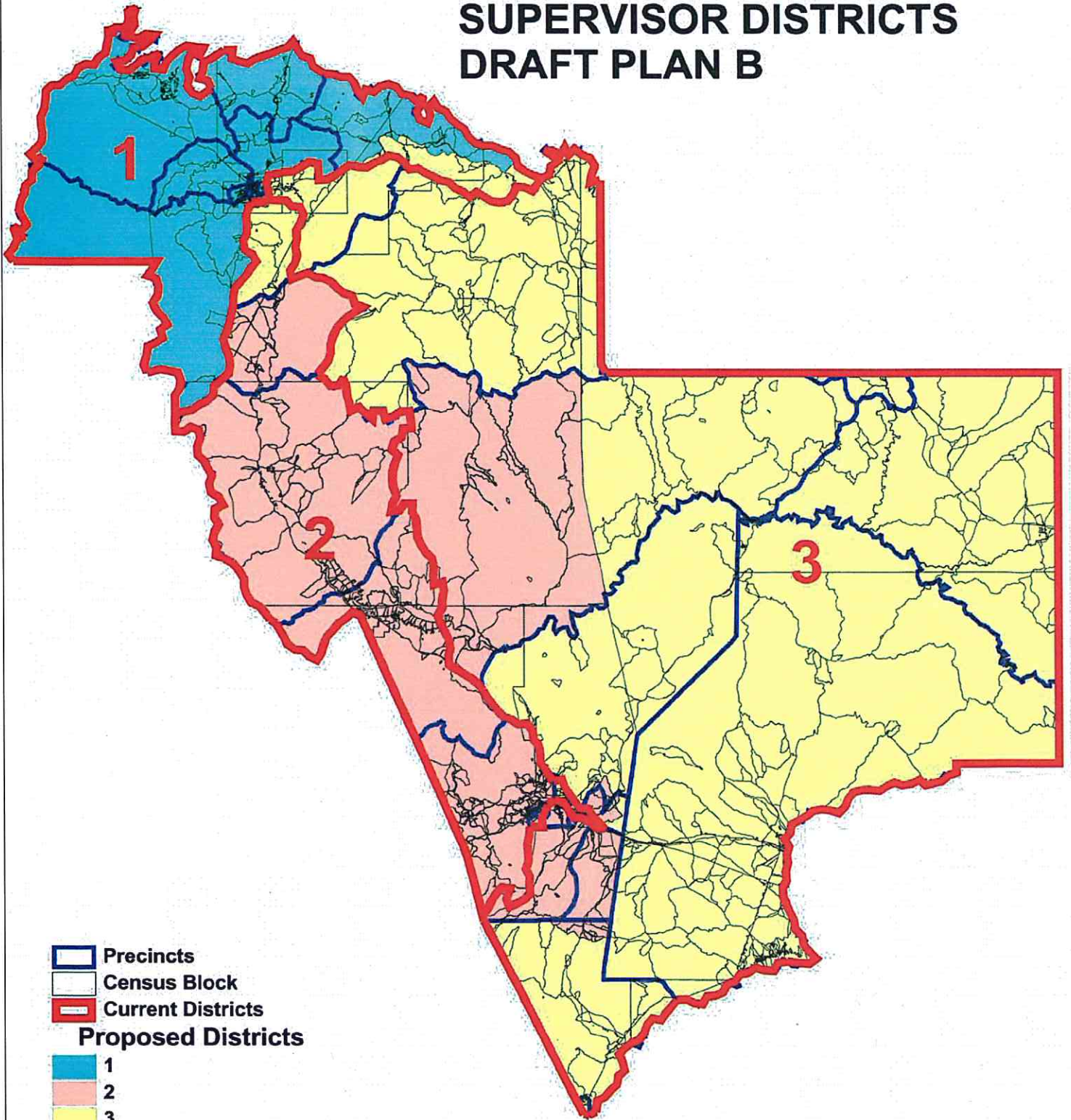
**Race and Origin Composition of Current and Proposed Gila County  
Supervisorial Districts  
DRAFT PLAN A**









**GILA COUNTY SUPERVISORIAL DISTRICTS  
DRAFT PLAN A**

	<b>Current</b>	<b>Proposed Plan</b>	<b>Change</b>
Population, District 1	18,105	18,105	0
Population, District 2	17,151	18,121	970
Population, District 3	18,341	17,371	-970
Population deviation, District 1	239	239	
Population deviation, District 2	-715	255	
Population deviation, District 3	475	-495	
Percent deviation, District 1	1.34%	1.34%	
Percent deviation, District 2	-4.00%	1.43%	
Percent deviation, District 3	2.66%	-2.77%	
Total plan deviation, number	1,190	750	
Total plan deviation, percent	6.66%	4.20%	
Percent voting-age Hispanic, District 1	6.23%	6.23%	0.00%
Percent voting-age Hispanic, District 2	24.88%	25.34%	0.46%
Percent voting-age Hispanic, District 3	16.45%	15.49%	-0.96%
Percent V-A Non-Hispanic Native American, District 1	1.75%	1.75%	0.00%
Percent V-A Non-Hispanic Native American, District 2	3.63%	3.24%	-0.39%
Percent V-A Non-Hispanic Native American, District 3	32.77%	34.75%	1.98%
Percent V-A Non-Hispanic Black, District 1	0.31%	0.31%	0.00%
Percent V-A Non-Hispanic Black, District 2	0.46%	0.71%	0.25%
Percent V-A Non-Hispanic Black, District 3	0.46%	0.18%	-0.28%
Percent voting-age total minority residents, District 1	9.13%	9.13%	0.00%
Percent voting-age total minority residents, District 2	30.16%	30.27%	0.11%
Percent voting-age total minority residents, District 3	50.28%	51.22%	0.94%

# GILA COUNTY SUPERVISOR DISTRICTS DRAFT PLAN B



-  Precincts
-  Census Block
-  Current Districts
- Proposed Districts**
-  1
-  2
-  3



Zane Grey

**GILA COUNTY  
SUPERVISOR DISTRICTS  
DRAFT PLAN B  
PAYSON AREA DETAIL**

Payson #5

Payson #8

Payson #4

Star Valley

Payson #3

Payson #6

Payson #1

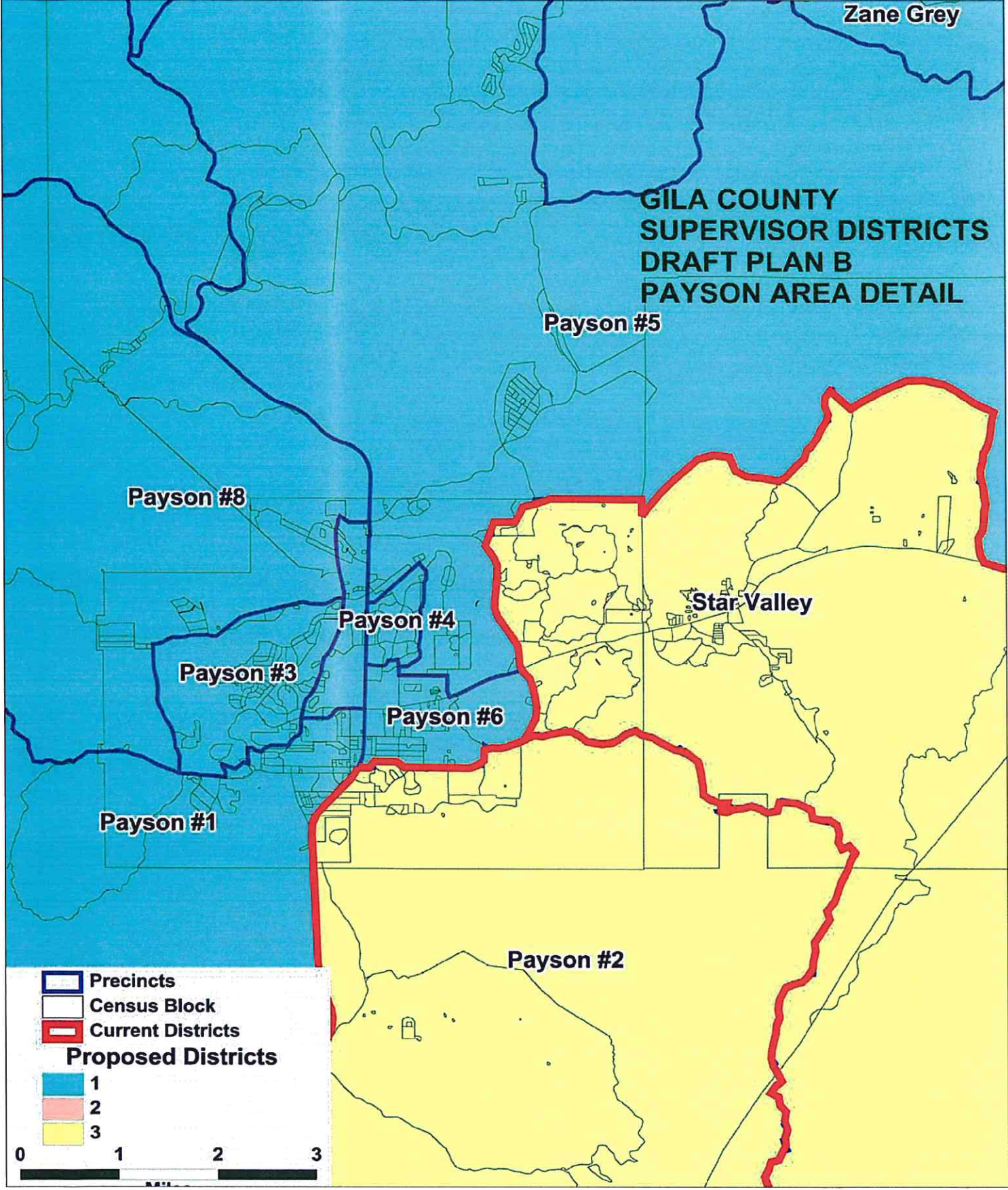
Payson #2

**Precincts**  
Census Block  
Current Districts

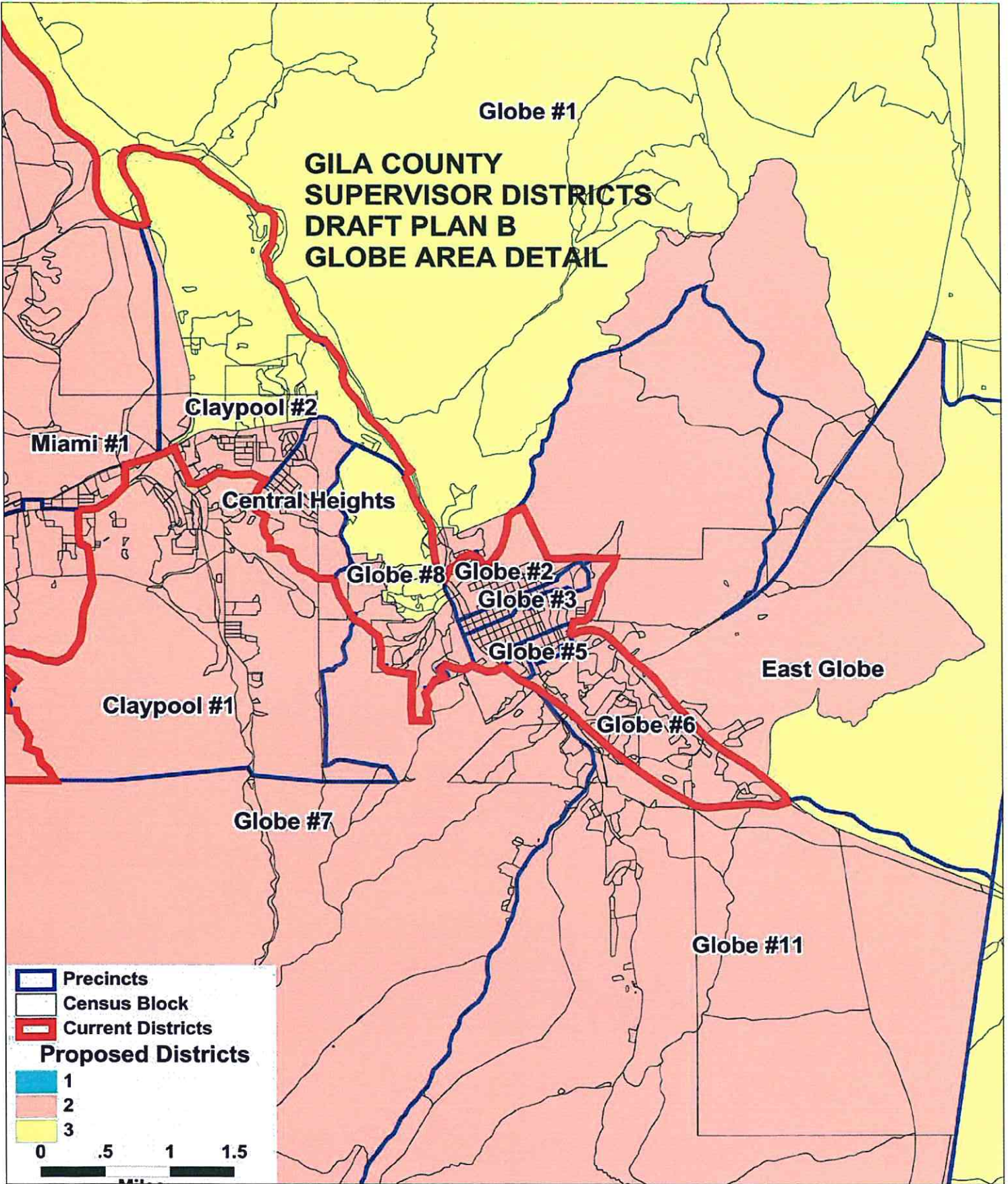
**Proposed Districts**

- 1
- 2
- 3

0 1 2 3



# GILA COUNTY SUPERVISOR DISTRICTS DRAFT PLAN B GLOBE AREA DETAIL





**GILA COUNTY SUPERVISORIAL DISTRICTS  
TOTAL POPULATION BY RACE AND HISPANIC ORIGIN  
DRAFT PLAN B**

<u>Number:</u>	<u>District 1</u>	<u>District 2</u>	<u>District 3</u>	<u>Total, All Districts</u>
Hispanic, of any race	1,465	5,257	2,866	9,588
Non-Hispanic White	15,891	11,751	7,656	35,298
Non-Hispanic Black	85	98	65	248
Non-Hispanic American Indian	356	677	6,942	7,975
Non-Hispanic Asian	114	126	81	321
Non-Hispanic Hawaiian	22	5	12	39
Non-Hispanic other race	20	24	22	66
Non-Hispanic two or more races	13	23	26	62
<b>Total Population</b>	<b>17,966</b>	<b>17,961</b>	<b>17,670</b>	<b>53,597</b>
 <u>Percent:</u>				
Hispanic, of any race	8.15%	29.27%	16.22%	17.89%
Non-Hispanic White	88.45%	65.43%	43.33%	65.86%
Non-Hispanic Black	0.47%	0.55%	0.37%	0.46%
Non-Hispanic American Indian	1.98%	3.77%	39.29%	14.88%
Non-Hispanic Asian	0.63%	0.70%	0.46%	0.60%
Non-Hispanic Hawaiian	0.12%	0.03%	0.07%	0.07%
Non-Hispanic other race	0.11%	0.13%	0.12%	0.12%
Non-Hispanic two or more races	0.07%	0.13%	0.15%	0.12%
<b>Total Percent</b>	<b>100.00%</b>	<b>100.00%</b>	<b>100.00%</b>	<b>100.00%</b>
 Ideal Population	17,866	17,866	17,866	<b>Total deviation: 296 1.66%</b>
Total Population	17,966	17,961	17,670	
Numeric deviation from Ideal Value	100	95	-196	
Percent deviation from Ideal Value	0.56%	0.53%	-1.10%	

Source: Census 2010 Redistricting Data (Public Law 94-171) Summary file, Arizona

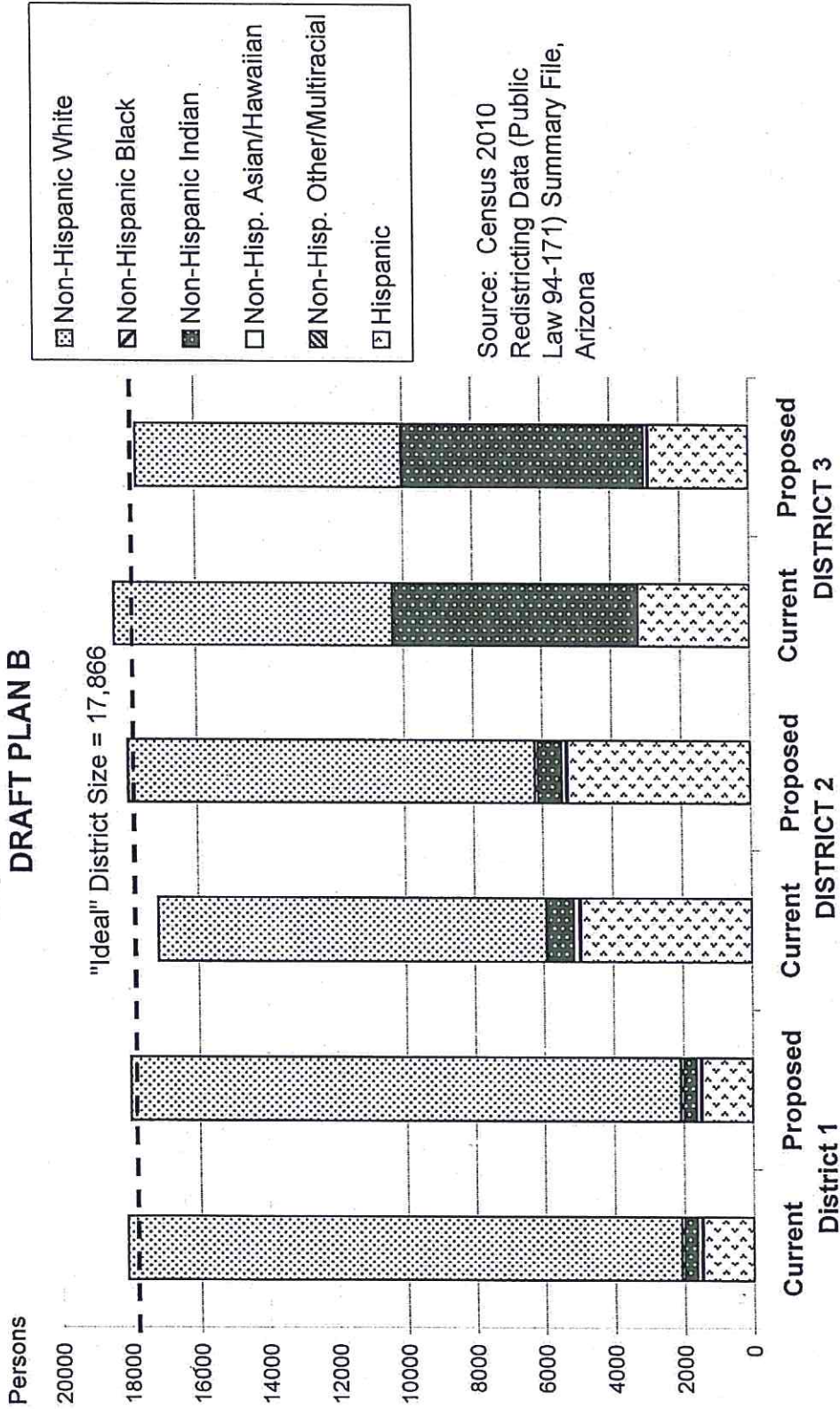
Tabulation: Research Advisory Services, Inc., Phoenix AZ (602) 230-9580

**GILA COUNTY SUPERVISORIAL DISTRICTS  
VOTING-AGE POPULATION BY RACE AND HISPANIC ORIGIN  
DRAFT PLAN B**

<b><u>Voting-Age Number:</u></b>	<b><u>District 1</u></b>	<b><u>District 2</u></b>	<b><u>District 3</u></b>	<b><u>Total, All Districts</u></b>
Hispanic, of any race	945	3,629	1,945	6,519
Non-Hispanic White	13,682	9,792	6,448	29,922
Non-Hispanic Black	47	76	48	171
Non-Hispanic American Indian	265	457	4,423	5,145
Non-Hispanic Asian	90	97	65	252
Non-Hispanic Hawaiian	17	3	10	30
Non-Hispanic other race	9	16	19	44
Non-Hispanic two or more races	11	16	16	43
<b><i>Voting-Age Population</i></b>	<b>15,066</b>	<b>14,086</b>	<b>12,974</b>	<b>42,126</b>
<b><u>Voting-Age Percent:</u></b>				
Hispanic, of any race	6.27%	25.76%	14.99%	15.48%
Non-Hispanic White	90.81%	69.52%	49.70%	71.03%
Non-Hispanic Black	0.31%	0.54%	0.37%	0.41%
Non-Hispanic American Indian	1.76%	3.24%	34.09%	12.21%
Non-Hispanic Asian	0.60%	0.69%	0.50%	0.60%
Non-Hispanic Hawaiian	0.11%	0.02%	0.08%	0.07%
Non-Hispanic other race	0.06%	0.11%	0.15%	0.10%
Non-Hispanic two or more races	0.07%	0.11%	0.12%	0.10%
<b><i>Voting-Age Percent</i></b>	<b>100.00%</b>	<b>100.00%</b>	<b>100.00%</b>	<b>100.00%</b>

Source: Census 2010 Redistricting Data (Public Law 94-171) Summary file, Arizona  
 Tabulation: Research Advisory Services, Inc., Phoenix AZ (602) 230-9580

# Race and Origin Composition of Current and Proposed Gila County Supervisory Districts DRAFT PLAN B



Source: Census 2010  
Redistricting Data (Public  
Law 94-171) Summary File,  
Arizona

**GILA COUNTY SUPERVISORIAL DISTRICTS  
DRAFT PLAN B**

	<b>Current</b>	<b>Proposed Plan</b>	<b>Change</b>
Population, District 1	18,105	17,966	-139
Population, District 2	17,151	17,961	810
Population, District 3	18,341	17,670	-671
Population deviation, District 1	239	100	
Population deviation, District 2	-715	95	
Population deviation, District 3	475	-196	
Percent deviation, District 1	1.34%	0.56%	
Percent deviation, District 2	-4.00%	0.53%	
Percent deviation, District 3	2.66%	-1.10%	
Total plan deviation, number	1,190	296	
Total plan deviation, percent	6.66%	1.66%	
Percent voting-age Hispanic, District 1	6.23%	6.27%	0.04%
Percent voting-age Hispanic, District 2	24.88%	25.76%	0.88%
Percent voting-age Hispanic, District 3	16.45%	14.99%	-1.46%
Percent V-A Non-Hispanic Native American, District 1	1.75%	1.76%	0.01%
Percent V-A Non-Hispanic Native American, District 2	3.63%	3.24%	-0.39%
Percent V-A Non-Hispanic Native American, District 3	32.77%	34.09%	1.32%
Percent V-A Non-Hispanic Black, District 1	0.31%	0.31%	0.00%
Percent V-A Non-Hispanic Black, District 2	0.46%	0.54%	0.08%
Percent V-A Non-Hispanic Black, District 3	0.46%	0.37%	-0.09%
Percent voting-age total minority residents, District 1	9.13%	9.19%	0.06%
Percent voting-age total minority residents, District 2	30.16%	30.48%	0.32%
Percent voting-age total minority residents, District 3	50.28%	50.30%	0.02%