

GILA COUNTY
TENTATIVE REDISTRICTING TIMELINE
Board of Supervisors and Community College

First round of Public Meetings for both Supervisorial and College Districts	June 8, 14, and 16, 2011
Committee reviews public input, consultant analyses, and plan alternatives for second round of Public Meetings	June thru mid July, 2011
Citizen plans/comments due	July 15, 2011
Second round of Public Meetings	Weeks of July 18 and July 25, 2011
Committee reviews additional public input, consultant analyses, and recommends plan alternatives for submission to the Board of Supervisors and the Governing Board of the Community College	August, 2011
Citizen comments due	August 31, 2011
Consultants create DOJ submission	August/September, 2011
Plan alternatives for college district boundaries submitted to Community College Board	September Meeting
Plan alternatives for supervisorial and college district boundaries submitted to Board of Supervisors*	September 20, 2011
Plans submitted to DOJ	September 21, 2011
Plans approved by DOJ	November 21, 2011
Recorder changes copy of voter registration file for upload when all redistricting changes are complete and approved.	September/October/November, 2011
State Redistricting Commission finalizes legislative and congressional lines	October 15, 2011
Gila County revises boundaries as required by State plan	October 31, 2011
Consultants create revised DOJ submissions	October/November, 2011
District changes, final number of precincts and precinct boundaries submitted for Board of Supervisors approval (ARS 16.411)*	November 15, 2011
Revised plans submitted to DOJ	November 16, 2011
Revised plans approved by DOJ	January 16, 2012
Recorder finalizes voter registration changes necessitated by State plan changes	January/February, 2012

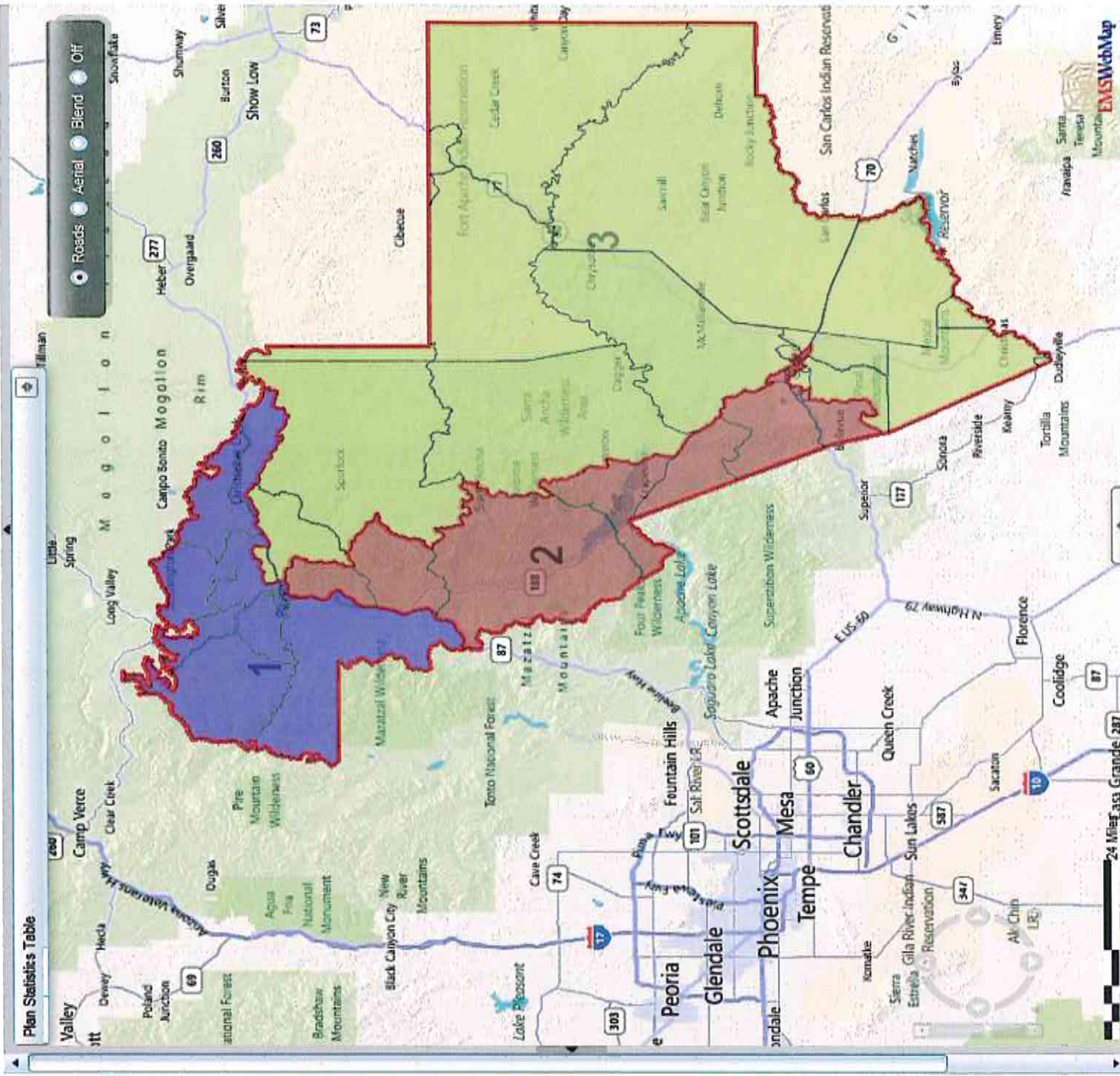
* The Board of Supervisors only meets twice a month. Available dates are: September 6, September 20, October 4, October 18, November 1, November 15, December 6.

CONDADO DE GILA
CALENDARIO PROVISIONAL PARA REDISTRIBUCIÓN DE DISTRITOS
Junta de Supervisores y la Universidad Comunitaria

Primer ronda de Reuniones Públicas para ambos distritos de Supervisión y de la Universidad Comunitaria	8, 14, y 16 de Junio 2011
La Comisión examina el comentario público, el análisis de los consultores y los alternativos planes de mapeo para la segunda ronda de las Reuniones Públicas	Junio hasta mediados de Julio, 2011
Fecha límite para Comentarios/Planes del Público	15 de Julio de 2011
Segunda ronda de Reuniones Públicas	Semanas del 18 y del 25 de Julio, 2011
La Comisión examina el comentario público adicional y el análisis de los consultores y recomienda planes alternativos para presentar a la Junta de Supervisores y a la Mesa Directiva de la Universidad Comunitaria	Agosto de 2011
Fecha límite para Comentarios del Público	31 de Agosto de 2011
Los Consultores preparan la presentación para el DOJ [Depto de Justicia]	Agosto/Septiembre de 2011
Los planes alternativos para los límites de los distritos universitarios son presentados a la Mesa Directiva de la Universidad Comunitaria	Reunión de Septiembre
Los planes alternativos para los límites de los distritos de supervisión y de la universidad comunitaria son presentados a la Junta de Supervisores*	20 de Septiembre de 2011
Planes presentados al DOJ	21 de Septiembre de 2011
Planes aprobados por del DOJ	21 de Noviembre de 2011
El Registrador cambia la copia del registro de votantes en el archivo para cargar cuando todos los cambios de redistribución de distritos se han completado y aprobado	Septiembre/Octubre/Noviembre de 2011
La Comisión Estatal de Delimitación de Distritos finaliza los distritos legislativos y del Congreso	15 de Octubre de 2011
El Condado de Gila modifica los límites de distritos como es requerido por el plan Estatal	31 de Octubre de 2011
Los consultores preparan presentaciones revisadas del Departamento de Justicia	Octubre/Noviembre de 2011
Cambios a los distritos, el número final de recintos y los límites de recintos son presentados a la Junta de Supervisores para aprobación (ARS 16.411)*	15 de Noviembre de 2011
Planes modificados presentados al DOJ	16 de Noviembre de 2011
Planes modificados aprobados por el DOJ	16 de Enero de 2012

El Registrador finaliza los cambios al registro de votantes exigido por los cambios al plan Estatal	Enero/Febrero de 2012

*La Junta de Supervisores sólo se reúne dos veces al mes. Fechas disponibles son: el 6 de septiembre, el 20 de septiembre, el 4 de octubre, el 18 de octubre, el 1º de noviembre, el 15 de noviembre y el 6 de diciembre.



- > Layers
- > Find Location
- > Tools

Redistricting Control Panel

Welcome to the Online Redistricting Application

[Información en Español](#)

[Open Guide](#)

[Register](#) [Login](#)

1. Download and print out the PDF instruction guide.

2. Register (no cost), or log on to your existing account.

Please register or log in to continue

3. To create a new plan, name the plan with your initials and a two-digit number (i.e. DDE01), then click 'New'

OR

Open an earlier saved plan, select its name from the dropdown list

The map shows the current districts (red outlines) and areas that can be moved (dark grey outlines) to equalize district populations.

The Plan Statistics Table window can be rolled up and down as needed.

Use the mouse to hover over an area on the map to see its demographic data.

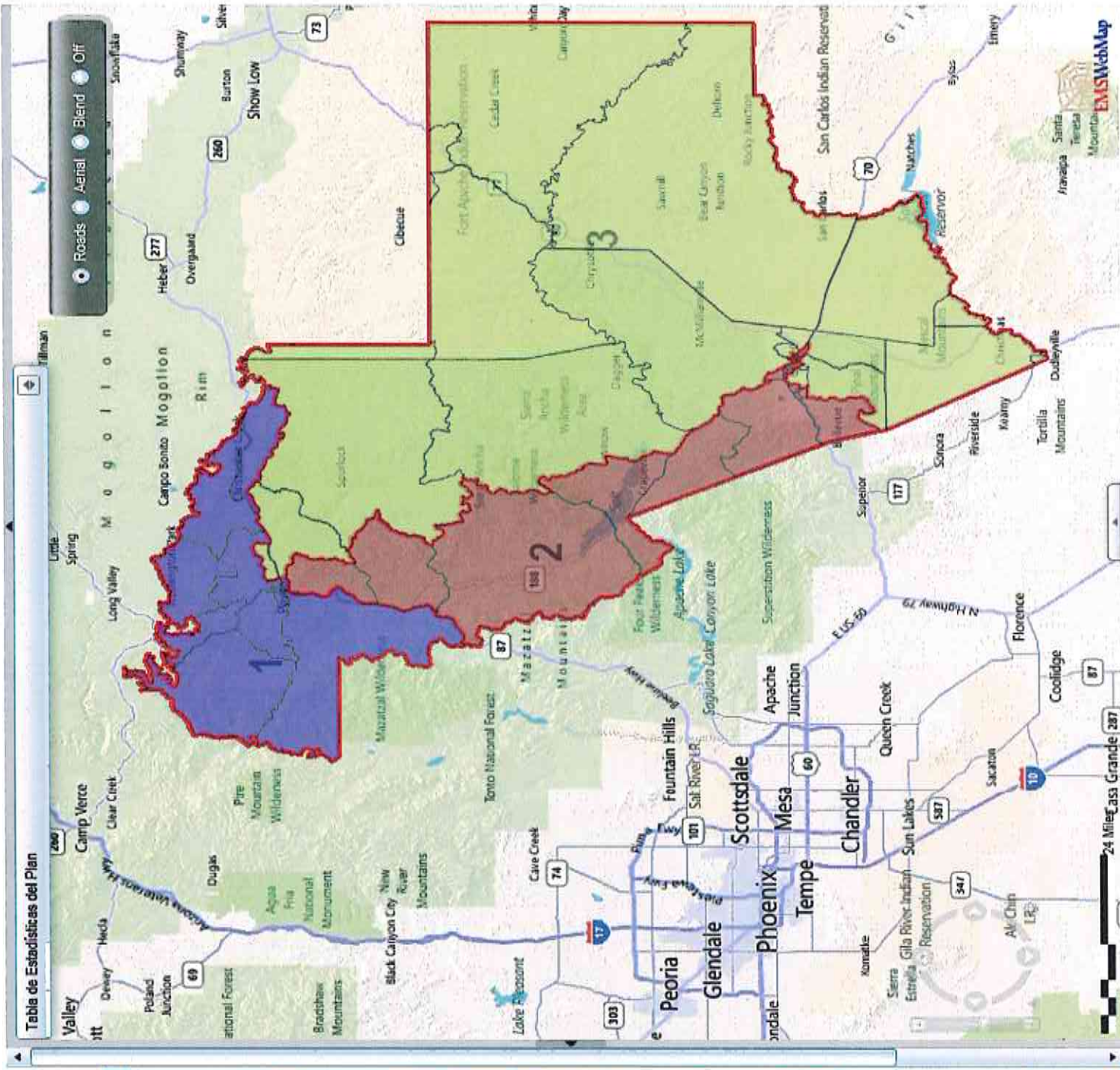
4. Select a district number to move areas into.

5. While holding down the Ctrl key and left mouse clicks, select potential areas to move into that district. As areas are selected, the table below accumulates the aggregate demographics of all selected areas.

Demographics of selected areas	
Total Population	0
Voting-Age Population (VA)	0
VA Hispanic %	0%
VA Non-Hispanic White %	0%
VA Non-Hispanic Black %	0%
VA Non-Hispanic Native-Am %	0%
VA Non-Hispanic Other Races %	0%
VA Total Minority %	0%
Total Voter Registration	0
Democratic %	0%
Republican %	0%
Independ. and Other %	0%

6. Press 'Move' to place the selected areas into the target district.

[Move](#) [Clear](#)



- > Layers
- > Find Location
- > Tools

Panel de Control de la Nueva División de Distritos

Bienvenido a la Aplicación En Línea de la Nueva División de Distritos

[Information in English](#)

[Abrir Guía](#)

[Inscribirse](#)

[Iniciar Sesión](#)

1. Descargar e imprimir la guía de instrucciones en pdf.
2. Inscribirse (ningún costo) o iniciar sesión a su cuenta existente.

Por favor inscribirse o Inicie sesión para continuar

3. Para crear un nuevo plan, póngale nombre al plan con sus iniciales y un número de dos dígitos (i.e. DDE01), después haga clic en "Nuevo".

Abrir un plan guardado antes, seleccione su nombre de la lista desplegable.

El mapa muestra los actuales distritos (líneas trazadas de color rojo) y las áreas que se pueden mover (líneas trazadas de color gris oscuro) para igualar las poblaciones de distritos.

La ventana de Estadísticas del Plan se puede rodar hacia arriba y abajo como se necesita.

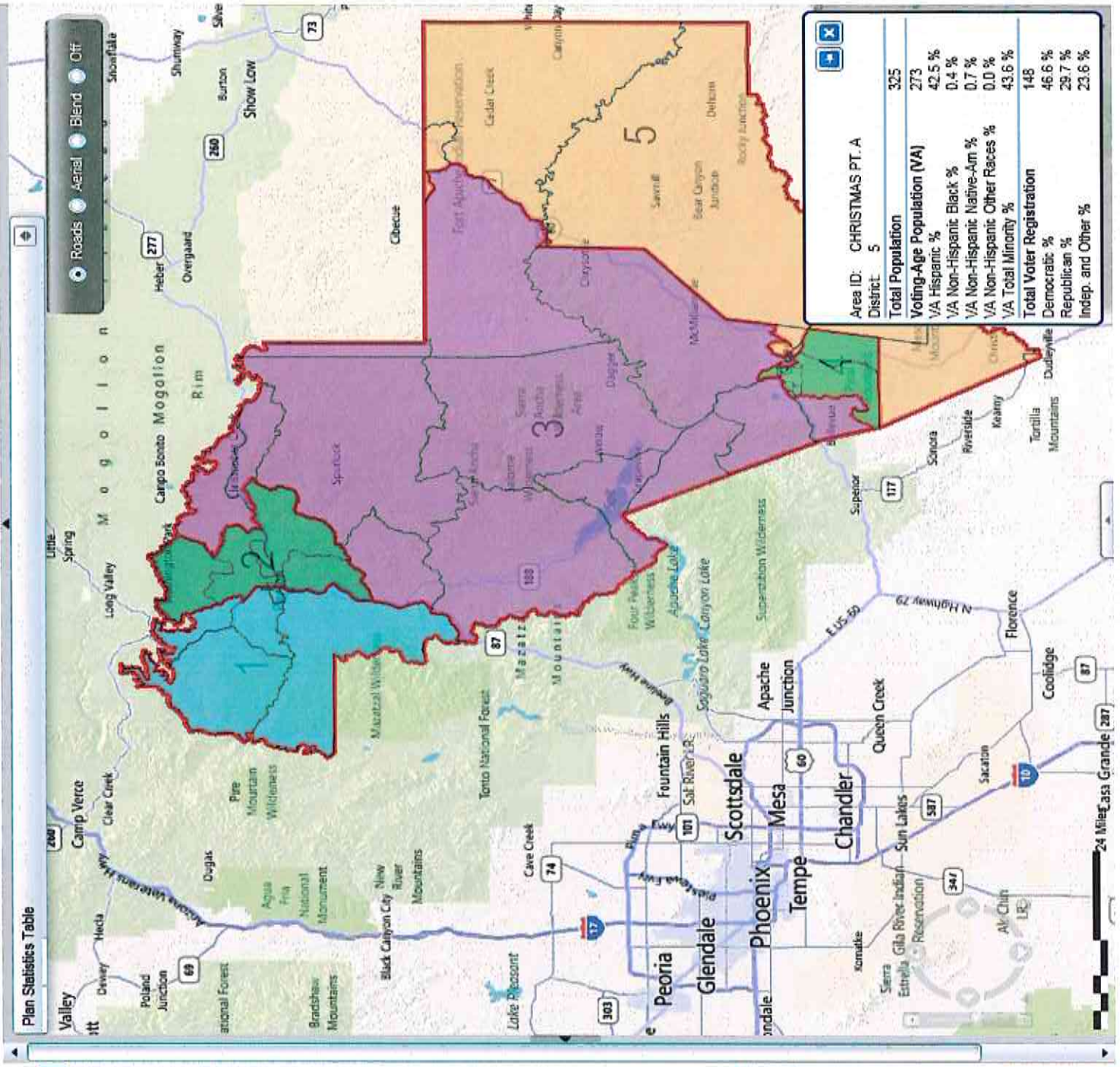
Use el ratón para sobrecolar un área en el mapa para ver sus datos demográficos.

4. Seleccionar un número de distrito en el cual puede mover las áreas

5. Mientras mantenga presionada la tecla de control y el botón izquierdo del ratón, seleccione las áreas potenciales para mover en dicho distrito. Al seleccionar las áreas, la tabla abajo acumula los demográficos totales de todas las áreas seleccionadas.

Demográficos de las áreas seleccionadas

Población Total	0
Población de la Edad de Votación (EV)	0
EV Hispana %	0%
EV Blanca No Hispana %	0%
EV Negra No Hispana %	0%
EV Nativa Americana No Hispana %	0%
EV de Otras Razas No Hispanas %	0%
EV Total de Minorías %	0%
Inscripción Total de Volantes	0
Demócratas %	0%
Republicanos %	0%
Independientes y Otros %	0%



Resistricting Control Panel

Welcome to the Online Redistricting Application

[Information en Español](#)

[Open Guide](#)

[Register](#) [Login](#)

1. Download and print out the PDF instruction guide.

2. Register (no cost), or log on to your existing account.

Please register or log in to continue

3. To create a new plan, name the plan with your initials and a two-digit number (i.e. DDE01), then click 'New'

OR

Open an earlier saved plan, select its name from the dropdown list.

The map shows the current districts (red outlines) and areas that can be moved (dark grey outlines) to equalize district populations.

The Plan Statistics Table window can be rolled up and down as needed.

Use the mouse to hover over an area on the map to see its demographic data.

4. Select a district number to move areas into.

5. While holding down the Ctrl key and left mouse clicks, select potential areas to move into that district. As areas are selected, the table below accumulates the aggregate demographics of all selected areas.

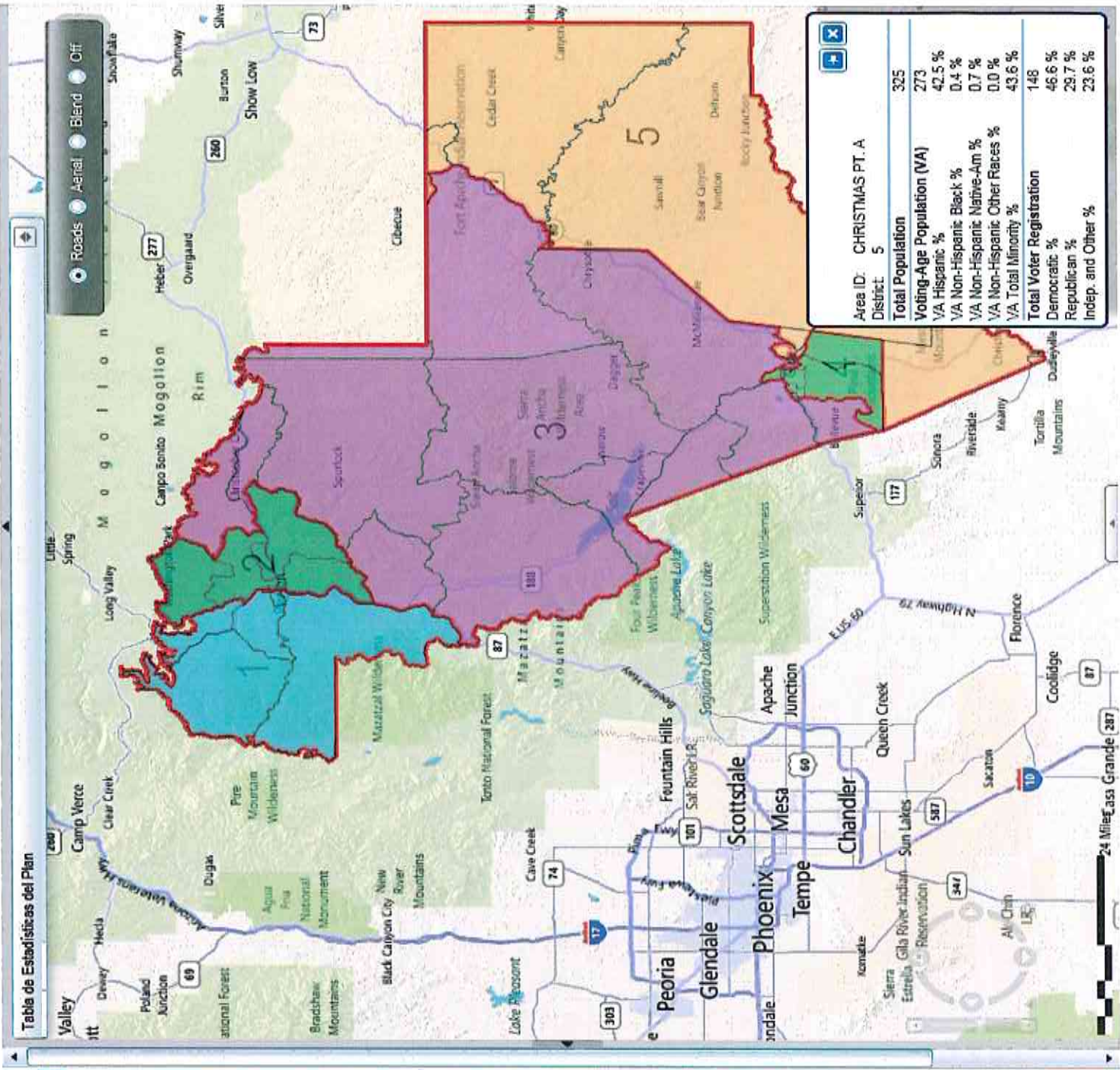
Demographics of selected areas

Total Population	0
Voting-Age Population (VA)	0
VA Hispanic %	0%
VA Non-Hispanic White %	0%
VA Non-Hispanic Black %	0%
VA Non-Hispanic Native-Am %	0%
VA Non-Hispanic Other Races %	0%
VA Total Minority %	0%
Total Voter Registration	0
Democratic %	0%
Republican %	0%
Indep. and Other %	0%

6. Press 'Move' to place the selected areas into the target district.

Roll down the Plan Statistics Table window and observe that the affected columns have automatically updated to reflect the change.

[Move](#) [Clear](#)



Panel de Control de la Nueva División de Distritos

Bienvenido a la Aplicación En Línea de la Nueva División de Distritos

[Information in English](#)

1. Descargar e imprimir la guía de instrucciones en pdf.
2. Inscríbese (ningún costo) o inicie sesión a su cuenta existente.
3. Para crear un nuevo plan, póngale nombre al plan con sus iniciales y un número de dos dígitos (i.e. DDE01), después haga clic en "Nuevo".

Abra un plan guardado antes, seleccione su nombre de la lista desplegable.

El mapa muestra los actuales distritos (líneas trazadas de color rojo) y las áreas que se pueden mover (líneas trazadas de color gris oscuro) para igualar las poblaciones de distritos.

La ventana de Estadísticas del Plan se puede rodar hacia arriba y abajo como se necesita.

Use el ratón para sobrevalor un área en el mapa para ver sus datos demográficos.

4. Seleccionar un número de distrito en cual puede mover las áreas

1

5. Mientras mantiene presionada la tecla de control y el botón izquierdo del ratón, seleccione las áreas potenciales para mover en dicho distrito. Al seleccionar las áreas, la tabla abajo acumula los demográficos totales de todas las áreas seleccionadas.

Demográficos de las áreas seleccionadas

Población Total	0
Población de la Edad de Votación (EV)	0
EV Hispana %	0%
EV Blanca No Hispana %	0%
EV Negra No Hispana %	0%
EV Nativa Americana No Hispana %	0%
EV de Otras Razas No Hispanas %	0%
EV Total de Minorías %	0%
Inscripción Total de Votantes	0
Demócratas %	0%
Replicanos %	0%
Independientes y Otros %	0%

6. Apriete "Mover" para colocar las áreas seleccionadas en el distrito objetivo.

Interactive Mapping Tool Census Breakdown

Area	Population
Globe No. 1	1,170
Globe No. 2	769
Globe No. 3	365
Globe No. 4	954
Globe No. 5	304
Globe No. 6	1,815
East Globe Pt. A	231
East Globe Pt. B	1,032
Globe No. 7	891
Globe No. 8	1,096
San Carlos Pt. A - Res	4,825
San Carlos Pt. B - Res	463
Canyon Day - Res	1,549
Globe No. 11	1,222
Miami No. 1 Pt. A	665
Miami No. 1 Pt. B	197
Miami No. 3	1,290
Claypool No. 3	1,111
Central Heights	974
Claypool No. 1	1,611
Claypool No. 2 Pt. A	953
Claypool No. 2 Pt. B	920
Hayden	662
Winkelman	353
Christmas Pt. A	325
Christmas Pt. B - Res	-
Roosevelt Pt. A	250
Roosevelt Pt. B	104
Sierra Ancha Pt. A	286
Sierra Ancha Pt. B - Res	2
Tonto Basin	1,634
Payson No. 1	2,430
Payson No. 2 Pt. A	2,744
Payson No. 2 Pt. B - Res	120
Payson No. 3	3,102
Payson No. 4	1,567
Payson No. 6	1,590
Payson No. 7	1,396
Payson No. 8	1,793
Payson No. 5	2,180
Star Valley Pt. A	1,580
Star Valley Pt. B	1,256
Whispering Pines	305
Zane Grey Pt. A	558
Zane Grey Pt. B	235
Gisela	886
Young Pt. A	756
Young Pt. B - Res	-
Pine/Strawberry Pt. A	2,209
Pine/Strawberry Pt. B	740
Carrizo - Res	127
TOTAL	53,597

Gila County Supervisor Redistricting Kit Instructions

It's your turn!

Gila County is asking for your ideas on how to draw new Supervisor districts to balance their populations after the 2010 Census. This online mapping program provides the tool you will need to draw, save and submit new districts, and this printed guide gives instructions for achieving the redistricting goals and hints for operating the online program.

The next three pages show data about all-age and voting-age populations in the three current Supervisor districts. The tables and bar graph also show the proportions of minority race and Hispanic Origin populations in each district.

As you move areas (which are based on the County's voting precincts) to create the three new districts, please remember the following redistricting criteria:

1. Each Supervisor District should end up with a total population close to the "ideal" district size of 17,866 persons. (Note: use total population, not voting-age, for equalizing districts.)
2. As much as possible, districts should be geographically compact and connected.
3. Current districts with large minority populations (Districts 2 and 3) should end up with similar proportions in the re-drawn districts.
4. As much as possible, Indian Reservations should be kept whole within a district. Reservation precincts are denoted by "-R" in their precinct ID numbers.

The sequence of instructions in the "Redistricting Control Panel" on the left side of the screen will guide you through the process of registering. There is no cost to use this mapping program. Registration allows you to return later to continue working on a plan.

Work through the other instructions in the Control Panel. Play with the program for a while to get used to how it works. You can't damage the program. If you don't like a plan you have started, just close the browser and start again.

Remember that this program is online, not on your computer, so its response time may vary depending on how busy the Internet is.

You may find it useful to print out this guide to refer to as you use the online program, especially the demographic data on the following three pages.

**GILA COUNTY SUPERVISORIAL DISTRICTS
CENSUS 2010 TOTAL POPULATION BY ELECTION DISTRICT**

Number:	District 1	District 2	District 3	Total, All Districts
Hispanic, of any race	1,467	4,916	3,205	9,588
Non-Hispanic White	16,025	11,237	8,036	35,298
Non-Hispanic Black	87	75	86	248
Non-Hispanic American Indian	357	715	6,903	7,975
Non-Hispanic Asian	114	143	64	321
Non-Hispanic Hawaiian	22	11	6	39
Non-Hispanic other race	20	29	17	66
Non-Hispanic two or more races	13	25	24	62
Total Population	18,105	17,151	18,341	53,597

Percent:				
Hispanic, of any race	8.10%	28.66%	17.47%	17.89%
Non-Hispanic White	88.51%	65.52%	43.81%	65.86%
Non-Hispanic Black	0.48%	0.44%	0.47%	0.46%
Non-Hispanic American Indian	1.97%	4.17%	37.64%	14.88%
Non-Hispanic Asian	0.63%	0.83%	0.35%	0.60%
Non-Hispanic Hawaiian	0.12%	0.06%	0.03%	0.07%
Non-Hispanic other race	0.11%	0.17%	0.09%	0.12%
Non-Hispanic two or more races	0.07%	0.15%	0.13%	0.12%
Total Percent	100.00%	100.00%	100.00%	100.00%

Ideal Population	17,866	17,866	17,866	Total
Total Population	18,105	17,151	18,341	deviation:
Numeric deviation from Ideal Value	239	-715	475	1,190
Percent deviation from Ideal Value	1.34%	-4.00%	2.66%	6.66%

Population in 2000	17,098	17,089	17,148	51,335
Population Change Since 2000	1,007	62	1,193	2,262
Percent Change Since 2000	5.89%	0.36%	6.96%	4.41%

Hispanic Population in 2000	785	4,647	3,114	8,546
Hispanic Population Change Since 2000	682	269	91	1,042
Hispanic Percent Change Since 2000	86.88%	5.79%	2.92%	12.19%

Source: Census 2010 Redistricting Data (Public Law 94-171) Summary file, Arizona
 Tabulation: Research Advisory Services, Inc., Phoenix AZ (602) 230-9580

**GILA COUNTY SUPERVISORIAL DISTRICTS
CENSUS 2010 VOTING-AGE POPULATIONS BY ELECTION DISTRICT**

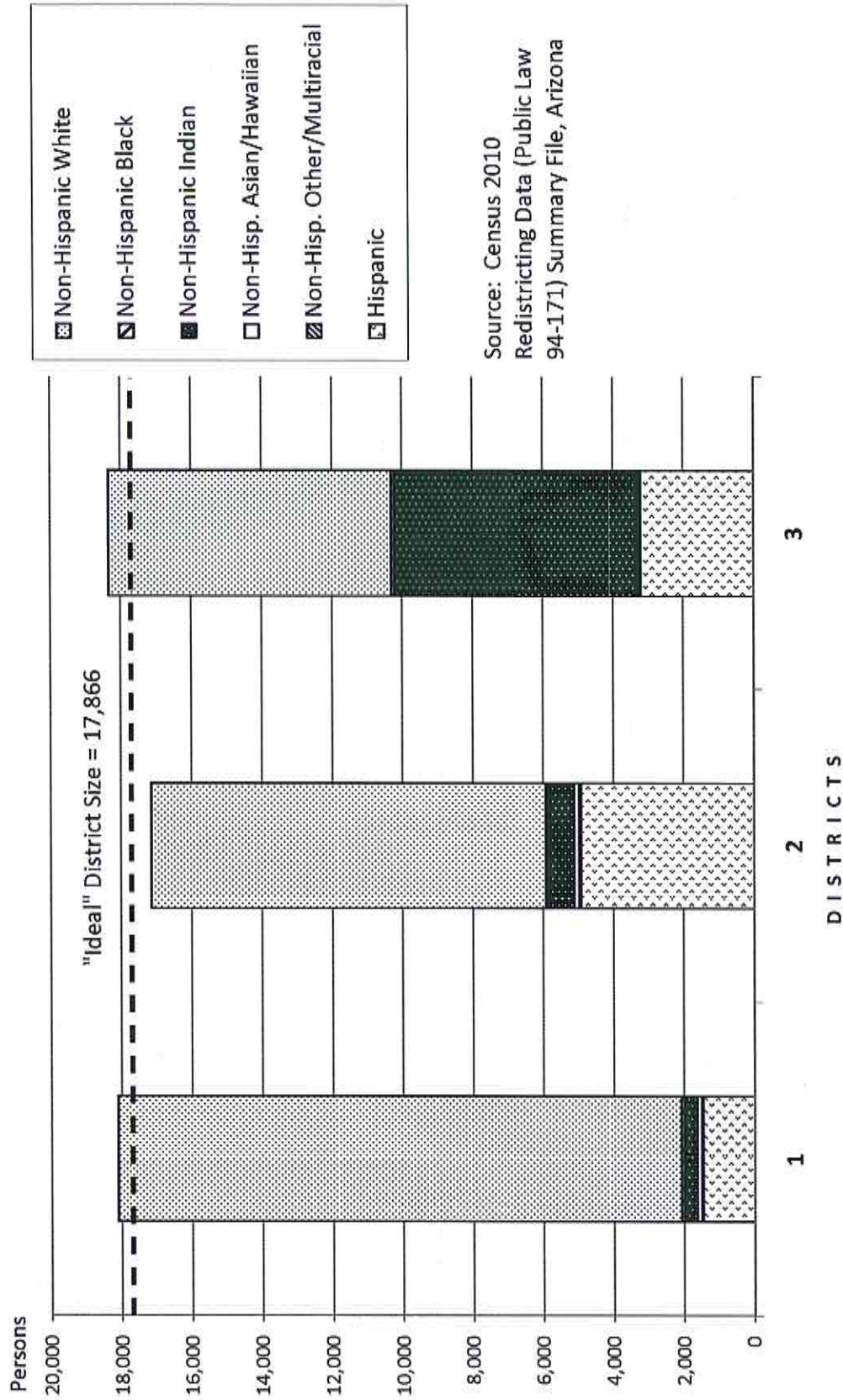
<u>Voting-Age Number:</u>	<u>District 1</u>	<u>District 2</u>	<u>District 3</u>	<u>Total, All Districts</u>
Hispanic, of any race	947	3,369	2,203	6,519
Non-Hispanic White	13,806	9,457	6,659	29,922
Non-Hispanic Black	47	62	62	171
Non-Hispanic American Indian	266	491	4,388	5,145
Non-Hispanic Asian	90	114	48	252
Non-Hispanic Hawaiian	17	9	4	30
Non-Hispanic other race	9	23	12	44
Non-Hispanic two or more races	11	16	16	43
Voting-Age Population	15,193	13,541	13,392	42,126

<u>Voting-Age Percent:</u>				
Hispanic, of any race	6.23%	24.88%	16.45%	15.48%
Non-Hispanic White	90.87%	69.84%	49.72%	71.03%
Non-Hispanic Black	0.31%	0.46%	0.46%	0.41%
Non-Hispanic American Indian	1.75%	3.63%	32.77%	12.21%
Non-Hispanic Asian	0.59%	0.84%	0.36%	0.60%
Non-Hispanic Hawaiian	0.11%	0.07%	0.03%	0.07%
Non-Hispanic other race	0.06%	0.17%	0.09%	0.10%
Non-Hispanic two or more races	0.07%	0.12%	0.12%	0.10%
Voting-Age Percent	100.00%	100.00%	100.00%	100.00%

Voting-Age Population in 2000	13,759	12,891	11,795	38,445
Voting-Age Pop. Change Since 2000	1,434	650	1,597	3,681
Voting-Age Percent Change Since 2000	10.42%	5.04%	13.54%	9.57%
Hispanic Voting-Age Population in 2000	531	3,142	1,973	5,646
Hispanic Voting-Age Change Since 2000	416	227	230	873
Hispanic V-A Percent Change Since 2000	78.34%	7.22%	11.66%	15.46%

Source: Census 2010 Redistricting Data (Public Law 94-171) Summary file, Arizona
 Tabulation: Research Advisory Services, Inc., Phoenix AZ (602) 230-9580

Race and Origin Composition of Current Gila County Supervisorial Districts



Source: Census 2010
 Redistricting Data (Public Law
 94-171) Summary File, Arizona

Gila County Community College Redistricting Kit Instructions

It's your turn!

Gila County is asking for your ideas on how to draw new Community College districts to balance their populations after the 2010 Census. This online mapping program provides the tool you will need to draw, save and submit new districts, and this printed guide gives instructions for achieving the redistricting goals and hints for operating the online program.

The next three pages show data about all-age and voting-age populations in the five current Community College districts. The tables and bar graph also show the proportions of minority race and Hispanic Origin populations in each district.

As you move areas (which are based on the County's voting precincts) to create the five new districts, please remember the following redistricting criteria:

1. Each Community College District should end up with a population close to the "ideal" district size of 10,719 persons. (Note: use total population, not voting-age, for equalizing districts.)
2. As much as possible, districts should be geographically compact and connected.
3. Current districts with large minority populations (Districts 4 and 5) should end up with similar proportions in the re-drawn districts.
4. As much as possible, Indian Reservations should be kept whole within a district. Reservation precincts are denoted by "-R" in their precinct ID numbers.

The sequence of instructions in the "Redistricting Control Panel" on the left side of the screen will guide you through the process of registering. There is no cost to use this mapping program. Registration allows you to return later to continue working on a plan.

Work through the other instructions in the Control Panel. Play with the program for a while to get used to how it works. You can't damage the program. If you don't like a plan you have started, just close the browser and start again.

Remember that this program is online, not on your computer, so its response time may vary depending on how busy the Internet is.

You may find it useful to print out this guide to refer to as you use the online program, especially the demographic data on the following three pages.

**GILA COUNTY COMMUNITY COLLEGE DISTRICTS
CENSUS 2010 TOTAL POPULATION BY ELECTION DISTRICT**

<u>Number:</u>	<u>District 1</u>	<u>District 2</u>	<u>District 3</u>	<u>District 4</u>	<u>District 5</u>	<u>Total, All Districts</u>
Hispanic, of any race	934	1,041	2,294	3,085	2,234	9,588
Non-Hispanic White	10,317	9,830	7,477	5,475	2,199	35,298
Non-Hispanic Black	56	40	41	71	40	248
Non-Hispanic American Indian	254	305	318	262	6,836	7,975
Non-Hispanic Asian	69	87	71	50	44	321
Non-Hispanic Hawaiian	17	8	5	8	1	39
Non-Hispanic other race	15	17	12	16	6	66
Non-Hispanic two or more races	8	14	13	5	22	62
Total Population	11,670	11,342	10,231	8,972	11,382	53,597
<u>Percent:</u>						
Hispanic, of any race	8.00%	9.18%	22.42%	34.38%	19.63%	17.89%
Non-Hispanic White	88.41%	86.67%	73.08%	61.02%	19.32%	65.86%
Non-Hispanic Black	0.48%	0.35%	0.40%	0.79%	0.35%	0.46%
Non-Hispanic American Indian	2.18%	2.69%	3.11%	2.92%	60.06%	14.88%
Non-Hispanic Asian	0.59%	0.77%	0.69%	0.56%	0.39%	0.60%
Non-Hispanic Hawaiian	0.15%	0.07%	0.05%	0.09%	0.01%	0.07%
Non-Hispanic other race	0.13%	0.15%	0.12%	0.18%	0.05%	0.12%
Non-Hispanic two or more races	0.07%	0.12%	0.13%	0.06%	0.19%	0.12%
Total Percent	100.00%	100.00%	100.00%	100.00%	100.00%	100.00%
Ideal Population	10,719	10,719	10,719	10,719	10,719	Total
Total Population	11,670	11,342	10,231	8,972	11,382	deviation:
Numeric deviation from Ideal Value	951	623	-488	-1,747	663	2,698
Percent deviation from Ideal Value	8.87%	5.81%	-4.56%	-16.30%	6.18%	25.17%
Population in 2000	10,412	10,511	9,986	9,693	10,733	51,335
Population Change Since 2000	1,258	831	245	-721	649	2,262
Percent Change Since 2000	12.08%	7.91%	2.45%	-7.44%	6.05%	4.41%
Hispanic Population in 2000	496	543	2,208	3,246	2,053	8,546
Hispanic Population Change Since 2000	438	498	86	-161	181	1,042
Hispanic Percent Change Since 2000	88.31%	91.71%	3.89%	-4.96%	8.82%	12.19%

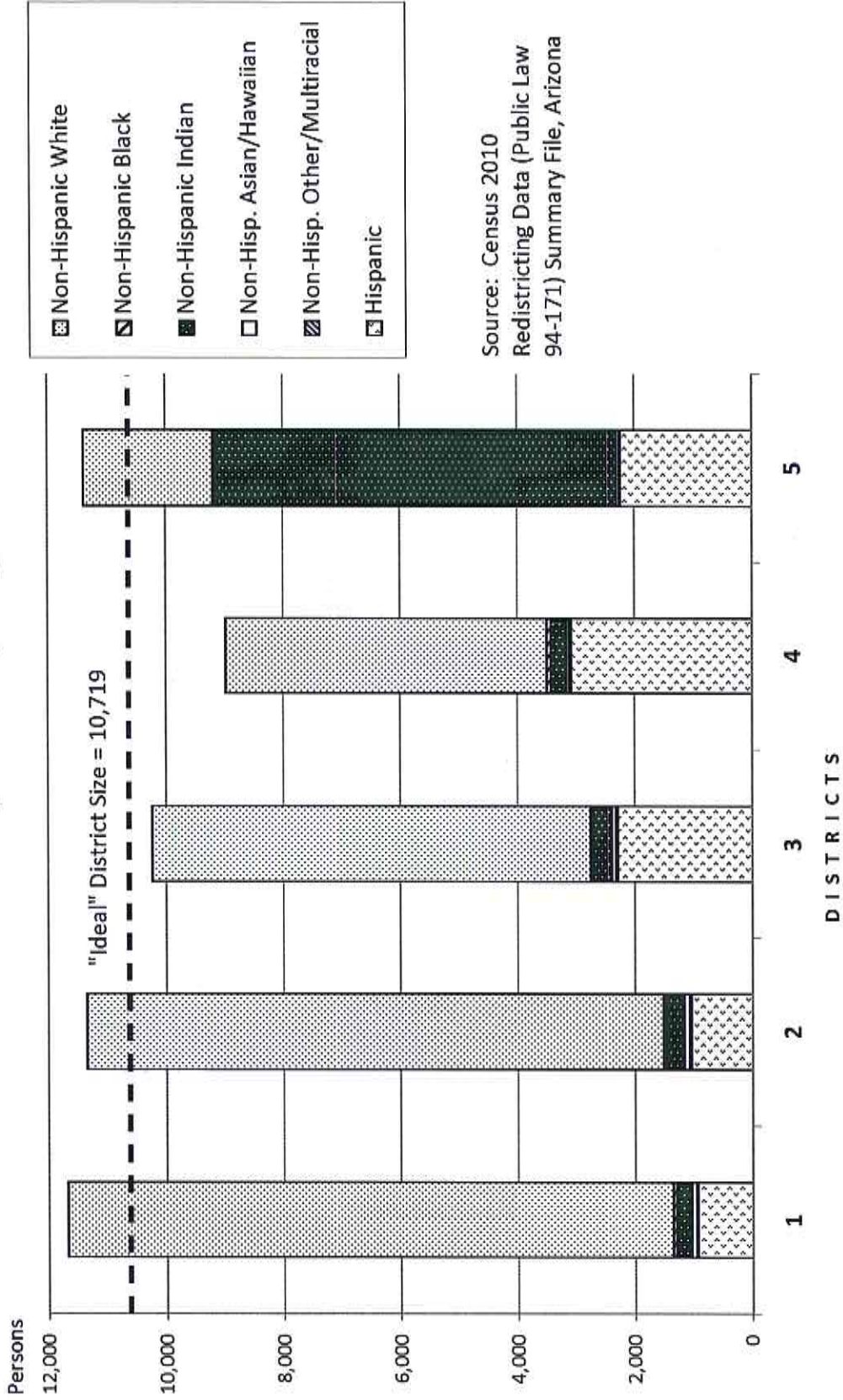
Source: Census 2010 Redistricting Data (Public Law 94-171) Summary file, Arizona
 Tabulation: Research Advisory Services, Inc., Phoenix AZ (602) 230-9580

**GILA COUNTY COMMUNITY COLLEGE DISTRICTS
CENSUS 2010 VOTING-AGE POPULATIONS BY ELECTION DISTRICT**

<u>Voting-Age Number:</u>	<u>District 1</u>	<u>District 2</u>	<u>District 3</u>	<u>District 4</u>	<u>District 5</u>	<u>Total, All Districts</u>
Hispanic, of any race	577	678	1,613	2,082	1,569	6,519
Non-Hispanic White	8,911	8,342	6,459	4,344	1,866	29,922
Non-Hispanic Black	34	21	29	49	38	171
Non-Hispanic American Indian	189	222	226	161	4,347	5,145
Non-Hispanic Asian	54	71	49	39	39	252
Non-Hispanic Hawaiian	12	7	5	5	1	30
Non-Hispanic other race	6	13	10	10	5	44
Non-Hispanic two or more races	6	10	10	5	12	43
Voting-Age Population	9,789	9,364	8,401	6,695	7,877	42,126
Voting-Age Percent:						
Hispanic, of any race	5.89%	7.24%	19.20%	31.10%	19.92%	15.48%
Non-Hispanic White	91.03%	89.09%	76.88%	64.88%	23.69%	71.03%
Non-Hispanic Black	0.35%	0.22%	0.35%	0.73%	0.48%	0.41%
Non-Hispanic American Indian	1.93%	2.37%	2.69%	2.40%	55.19%	12.21%
Non-Hispanic Asian	0.55%	0.76%	0.58%	0.58%	0.50%	0.60%
Non-Hispanic Hawaiian	0.12%	0.07%	0.06%	0.07%	0.01%	0.07%
Non-Hispanic other race	0.06%	0.14%	0.12%	0.15%	0.06%	0.10%
Non-Hispanic two or more races	0.06%	0.11%	0.12%	0.07%	0.15%	0.10%
Voting-Age Percent	100.00%	100.00%	100.00%	100.00%	100.00%	100.00%
Voting-Age Population in 2000	8,386	8,375	7,912	6,940	6,832	38,445
Voting-Age Pop. Change Since 2000	1,403	989	489	-245	1,045	3,681
Voting-Age Percent Change Since 2000	16.73%	11.81%	6.18%	-3.53%	15.30%	9.57%
Hispanic Voting-Age Population in 2000	342	336	1,484	2,120	1,364	5,646
Hispanic Voting-Age Change Since 2000	235	342	129	-38	205	873
Hispanic V-A Percent Change Since 2000	68.71%	101.79%	8.69%	-1.79%	15.03%	15.46%

Source: Census 2010 Redistricting Data (Public Law 94-171) Summary file, Arizona
 Tabulation: Research Advisory Services, Inc., Phoenix AZ (602) 230-9580

Race and Origin Composition of Current Gila County Community College Districts



Source: Census 2010
Redistricting Data (Public Law
94-171) Summary File, Arizona

GILA COUNTY REDISTRICTING PLAN SUBMISSION

The Public is encouraged to submit plans or ideas for redistricting to the Redistricting Advisory Committee. All submissions not submitted via the web based mapping tool must be formally submitted, utilizing this form as a cover sheet, to the following address:

Gila County Redistricting Advisory Committee
c/o Gila County Elections
5515 S Apache Ave, Suite 900
Globe, AZ 85501

Plans or ideas not formally submitted to the Committee will not be reviewed. Please include all of the requested information. Feel free to make comments about your plan.

Date Submitted: _____

Attached for your review are my suggestions for Gila County Redistricting

From: _____ Email: _____

Address: _____ Phone: _____

City: _____ State: AZ Zip: _____

Comments: _____

Date Received: _____

Comments: _____

**PRESENTACIÓN DE PROPUESTAS PARA LA REDISTRIBUCIÓN
DE DISTRITOS DEL CONDADO DE GILA**

Se le invita al público a presentar planes o ideas para la redistribución de distritos a la Comisión Consultiva de Delimitación (el Comité). Todas las propuestas que no se presenten a través de la herramienta de cartografía web, deberán utilizar este formulario como hoja de cubierta y ser entregadas formalmente a la dirección siguiente:

Gila County Redistricting Advisory Committee
c/o Gila County Elections
5515 Ave S Apache, Suite 900
Globe, AZ 85501

No se revisarán planes o ideas no presentadas formalmente al Comité. Por favor, incluya toda la información solicitada. Puede sentirse libre en hacer comentarios sobre su plan.

Fecha de Entrega: _____

Adjunta para su revisión son mis sugerencias para la redistribución de distritos del Condado de Gila

De parte de: _____ Correo Electrónico: _____

Dirección: _____ Teléfono: _____

Ciudad: _____ Estado: AZ Zona Postal: _____

Comentarios: _____

Date Received: _____

Comments: _____

GILA COUNTY REDISTRICTING ADVISORY COMMITTEE

CALL TO THE PUBLIC SPEAKER FORM

Thank you for attending today's Redistricting Advisory Committee Meeting

During the "Call to the Public" on today's agenda, the public may comment during regularly scheduled meetings of the Committee. The Chair will conduct a Call to the Public to accept comments from the public at the end of the meeting, although the Committee reserves the right to modify the order of any item on the agenda including the Call to the Public.

Citizens who wish to address the public body need not request permission in advance. In order for the record to properly reflect the speaker's name, address and subject matter, please complete the information below and submit it to the Committee.

Speakers will be limited to three (3) minutes each and the Committee reserves the right to limit the length of the Public Comment period.

Committee members may not discuss items that are not specifically identified on the agenda. Therefore, pursuant to ARS §38-431.01(G), action taken as a result of public comment will be limited to directing staff to study the matter, responding to criticism, or scheduling the matter for further discussion and decision at a future date.

Date _____ Your Name _____

Your mailing address _____

Your e-mail address _____

Your phone number _____

Brief description of the subject to be addressed:

COMISIÓN CONSULTIVA DE DELIMITACIÓN DEL CONDADO DE GILA

FORMULARIO PARA COMENTARIO PÚBLICO

Gracias por asistir esta reunión de la Comisión Consultiva de Delimitación (el Comité).

Durante el tiempo que se permite en el orden del día para la "Llamada al Público," personas en el público pueden comentar durante las reuniones regulares del Comité. El Presidente del Comité realizará una llamada al público para aceptar comentarios del público al final de la reunión, aunque el Comité reserva el derecho de modificar el orden de cualquier tema en el programa, incluyendo la Llamada al Público.

Los ciudadanos que desean dirigirse a la entidad pública no necesitan solicitar permiso de antemano. Para que el registro refleje correctamente el nombre, la dirección y la materia, favor de completar la información que se pide abajo y entregar este formulario al Comité.

Oradores estarán limitados a tres (3) minutos cada uno y el Comité se reserva el derecho de limitar la duración del periodo de comentarios públicos.

Miembros del Comité no pueden debatir temas que no son específicamente identificados en el orden del día. Por lo tanto, conforme a ARS §38-431.01(G), las medidas adoptadas como resultado del comentario público se limitarán a dirigir personal para investigar el asunto, responder a las críticas, o a programar el asunto para el debate y decisión en una fecha futura.

Fecha _____ Su Nombre _____

Su Dirección Postal _____

Su Dirección de Correo Electrónico (Email) _____

Su Número de Teléfono _____

Las preguntas o una descripción breve de la materia que se tratará:
