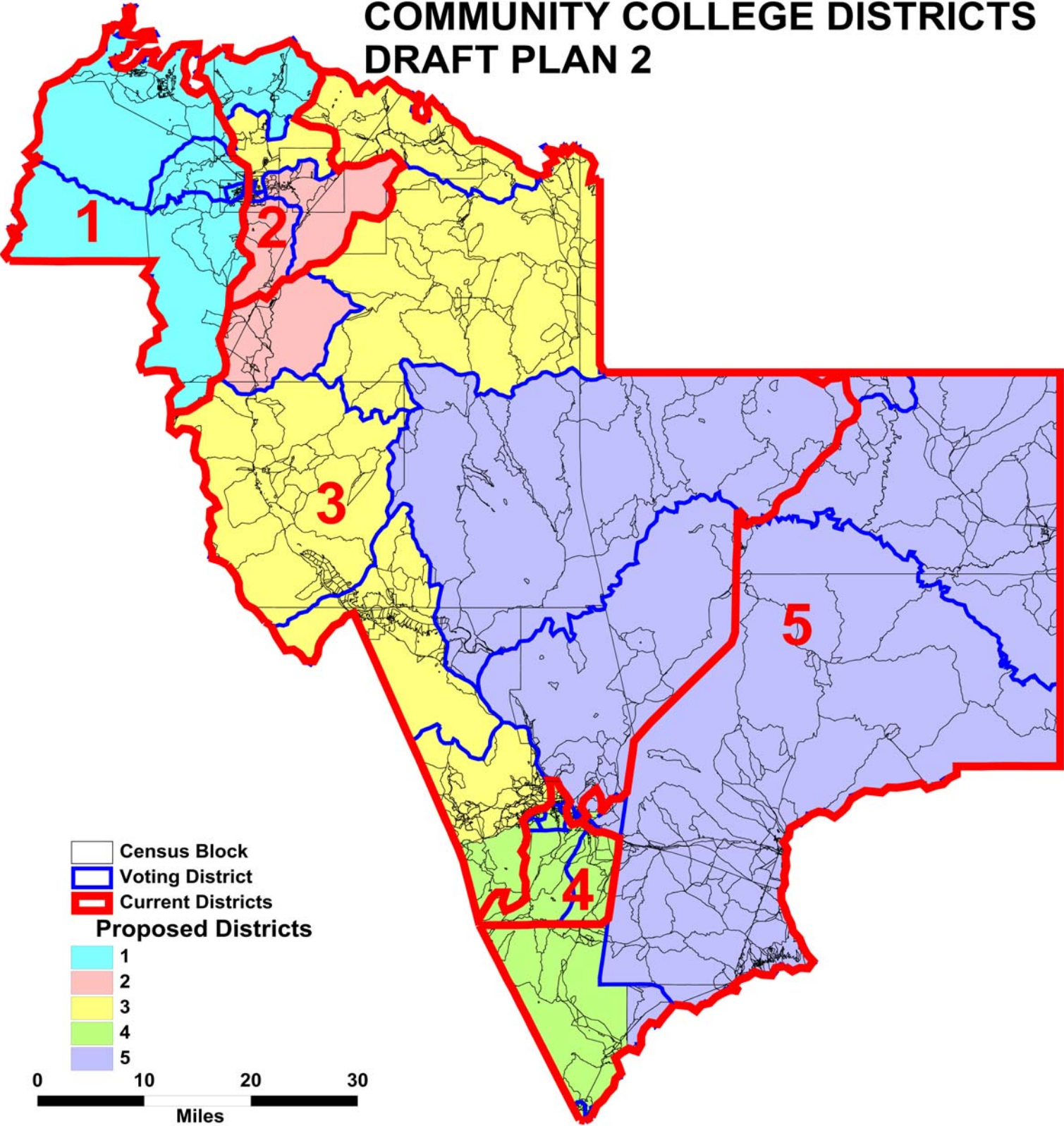
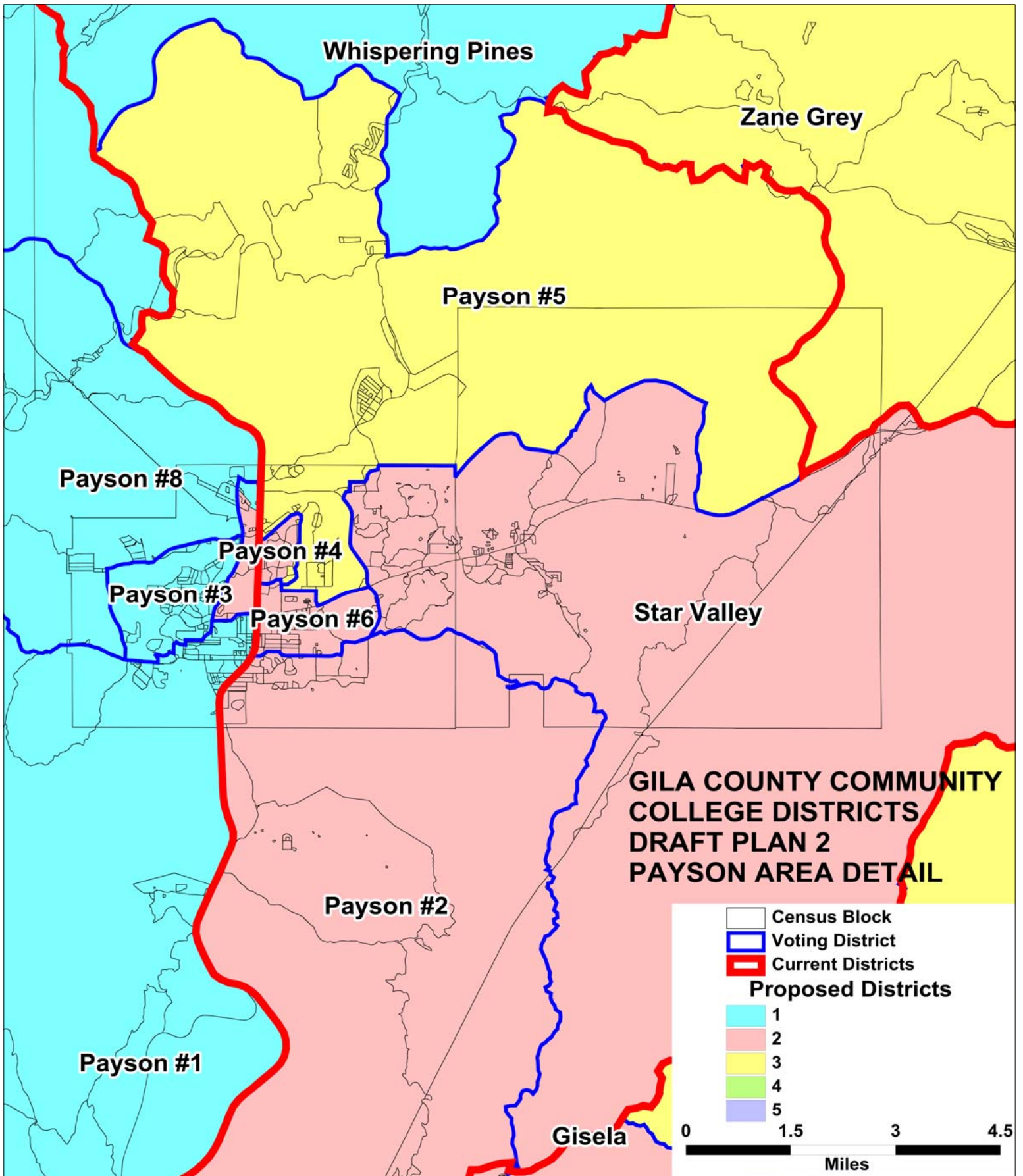
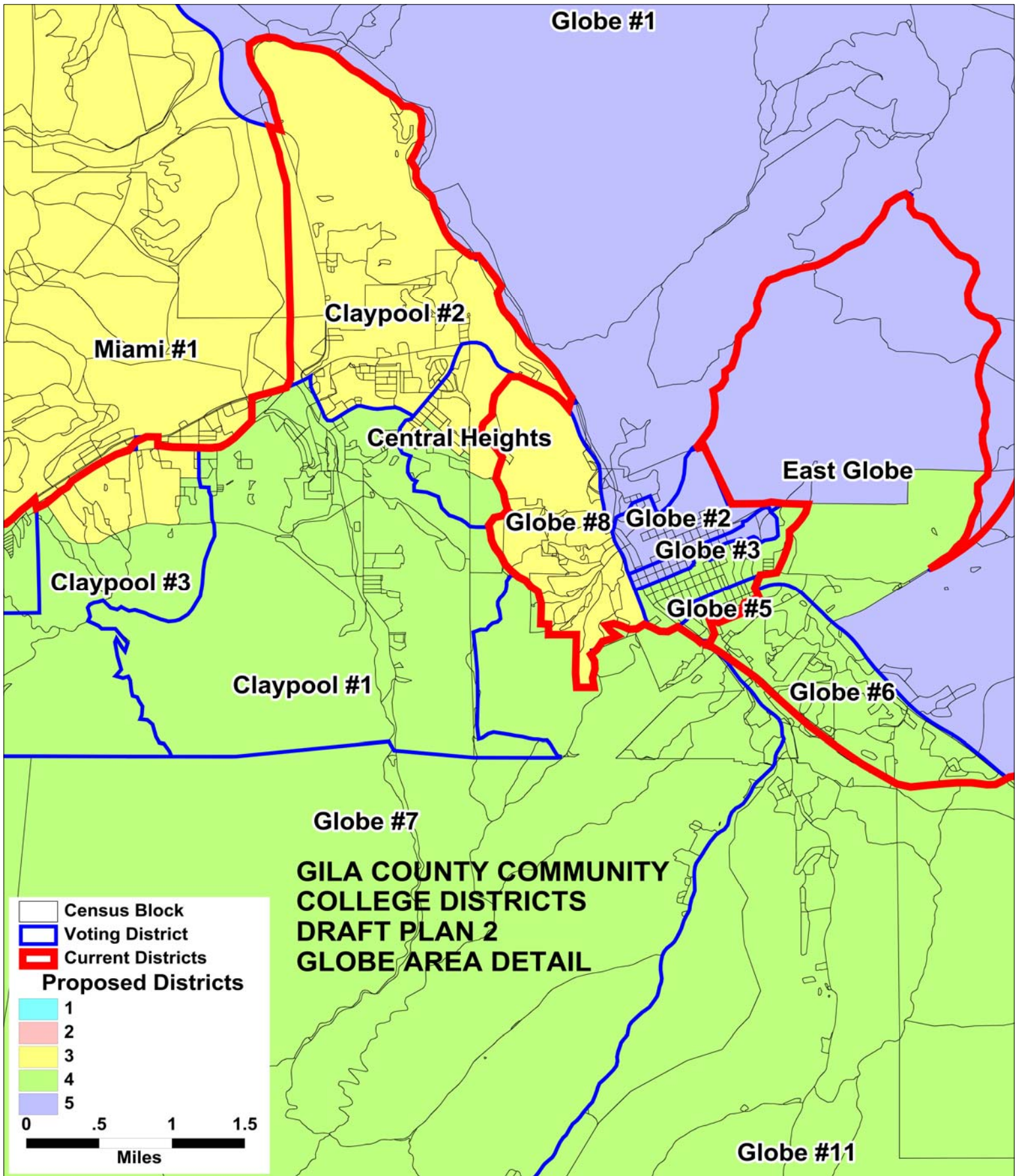


GILA COUNTY COMMUNITY COLLEGE DISTRICTS DRAFT PLAN 2







**GILA COUNTY COMMUNITY COLLEGE DISTRICTS
TOTAL POPULATION BY RACE AND HISPANIC ORIGIN
DRAFT PLAN 2**

<u>Number:</u>	<u>District 1</u>	<u>District 2</u>	<u>District 3</u>	<u>District 4</u>	<u>District 5</u>	<u>Total, All Districts</u>
Hispanic, of any race	841	979	2,518	3,986	1,264	9,588
Non-Hispanic White	9,446	9,354	8,236	5,765	2,497	35,298
Non-Hispanic Black	47	44	63	51	43	248
Non-Hispanic American Indian	229	317	235	455	6,739	7,975
Non-Hispanic Asian	67	79	68	79	28	321
Non-Hispanic Hawaiian	16	9	11	3	0	39
Non-Hispanic other race	12	18	14	15	7	66
Non-Hispanic two or more races	7	12	13	14	16	62
Total Population	10,665	10,812	11,158	10,368	10,594	53,597
<u>Percent:</u>						
Hispanic, of any race	7.89%	9.05%	22.57%	38.45%	11.93%	17.89%
Non-Hispanic White	88.57%	86.51%	73.81%	55.60%	23.57%	65.86%
Non-Hispanic Black	0.44%	0.41%	0.56%	0.49%	0.41%	0.46%
Non-Hispanic American Indian	2.15%	2.93%	2.11%	4.39%	63.61%	14.88%
Non-Hispanic Asian	0.63%	0.73%	0.61%	0.76%	0.26%	0.60%
Non-Hispanic Hawaiian	0.15%	0.08%	0.10%	0.03%	0.00%	0.07%
Non-Hispanic other race	0.11%	0.17%	0.13%	0.14%	0.07%	0.12%
Non-Hispanic two or more races	0.07%	0.11%	0.12%	0.14%	0.15%	0.12%
Total Percent	100.00%	100.00%	100.00%	100.00%	100.00%	100.00%
Ideal Population	10,719	10,719	10,719	10,719	10,719	Total deviation: 790 7.37%
Total Population	10,665	10,812	11,158	10,368	10,594	
Numeric deviation from Ideal Value	-54	93	439	-351	-125	
Percent deviation from Ideal Value	-0.51%	0.86%	4.09%	-3.28%	-1.17%	

Source: Census 2010 Redistricting Data (Public Law 94-171) Summary file, Arizona
 Tabulation: Research Advisory Services, Inc., Phoenix AZ (602) 230-9580

**GILA COUNTY COMMUNITY COLLEGE DISTRICTS
VOTING-AGE POPULATIONS BY RACE AND HISPANIC ORIGIN
DRAFT PLAN 2**

	<u>District 1</u>	<u>District 2</u>	<u>District 3</u>	<u>District 4</u>	<u>District 5</u>	<u>Total, All Districts</u>
<u>Voting-Age Number:</u>						
Hispanic, of any race	512	632	1,746	2,771	890	6,551
Non-Hispanic White	8,236	7,832	7,058	4,663	2,006	29,795
Non-Hispanic Black	29	24	45	31	42	171
Non-Hispanic American Indian	174	226	154	317	4,268	5,139
Non-Hispanic Asian	54	64	53	63	18	252
Non-Hispanic Hawaiian	11	8	10	1	0	30
Non-Hispanic other race	3	16	12	8	5	44
Non-Hispanic two or more races	5	8	10	9	11	43
<i>Voting-Age Population</i>	9,024	8,810	9,088	7,863	7,240	42,025
<u>Voting-Age Percent:</u>						
Hispanic, of any race	5.67%	7.17%	19.21%	35.24%	12.29%	15.59%
Non-Hispanic White	91.27%	88.90%	77.66%	59.30%	27.71%	70.90%
Non-Hispanic Black	0.32%	0.27%	0.50%	0.39%	0.58%	0.41%
Non-Hispanic American Indian	1.93%	2.57%	1.69%	4.03%	58.95%	12.23%
Non-Hispanic Asian	0.60%	0.73%	0.58%	0.80%	0.25%	0.60%
Non-Hispanic Hawaiian	0.12%	0.09%	0.11%	0.01%	0.00%	0.07%
Non-Hispanic other race	0.03%	0.18%	0.13%	0.10%	0.07%	0.10%
Non-Hispanic two or more races	0.06%	0.09%	0.11%	0.11%	0.15%	0.10%
<i>Voting-Age Percent</i>	100.00%	100.00%	100.00%	100.00%	100.00%	100.00%

Source: Census 2010 Redistricting Data (Public Law 94-171) Summary file, Arizona





Tabulation: Research Advisory Services, Inc., Phoenix AZ (602) 230-9580

Race and Origin Composition of Current and Proposed Gila County Community College Districts DRAFT PLAN 2

Persons

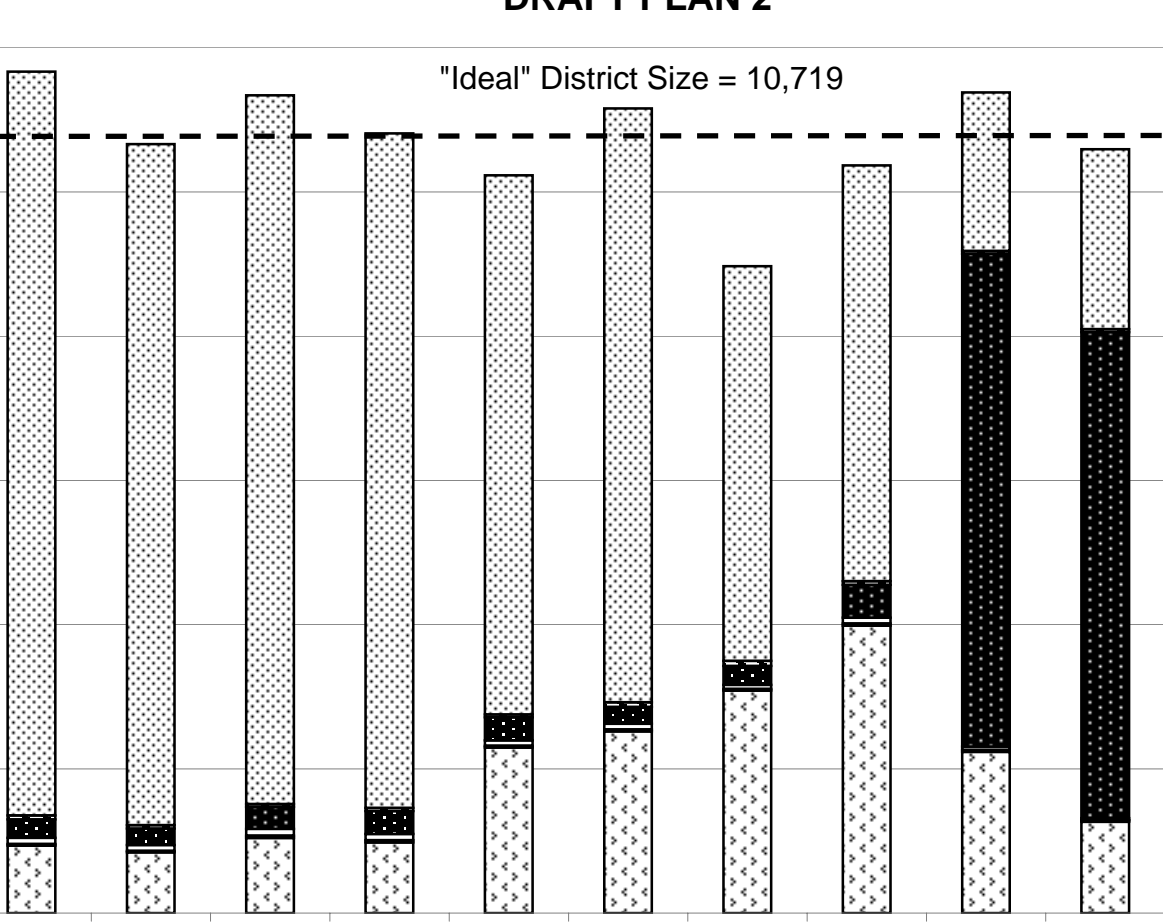
12000
10000
8000
6000
4000
2000
0

"Ideal" District Size = 10,719

-  Non-Hispanic White
-  Non-Hispanic Black
-  Non-Hispanic Indian
-  Non-Hisp. Asian/Hawaiian
-  Non-Hisp. Other/Multiracial
-  Hispanic

Source: Census 2010
Redistricting Data (Public
Law 94-171) Summary File,
Arizona

Current Proposed Current Proposed Current Proposed Current Proposed Current Proposed
District 1 **District 2** **District 3** **District 4** **District 5**



**GILA COUNTY COMMUNITY COLLEGE DISTRICTS
DRAFT PLAN 2**

	Current Districts	Proposed Plan	Change
Population, District 1	11,670	10,665	-1,005
Population, District 2	11,342	10,812	-530
Population, District 3	10,231	11,158	927
Population, District 4	8,972	10,368	1,396
Population, District 5	11,382	10,594	-788
Population deviation, District 1	951	-54	
Population deviation, District 2	623	93	
Population deviation, District 3	-488	439	
Population deviation, District 4	-1,747	-351	
Population deviation, District 5	663	-125	
Percent deviation, District 1	8.87%	-0.51%	
Percent deviation, District 2	5.81%	0.86%	
Percent deviation, District 3	-4.56%	4.09%	
Percent deviation, District 4	-16.30%	-3.28%	
Percent deviation, District 5	6.18%	-1.17%	
Total plan deviation, number	2,698	790	
Total plan deviation, percent	25.17%	7.37%	
Percent voting-age Hispanic, District 1	5.89%	5.67%	-0.22%
Percent voting-age Hispanic, District 2	7.24%	7.17%	-0.07%
Percent voting-age Hispanic, District 3	19.20%	19.21%	0.01%
Percent voting-age Hispanic, District 4	31.10%	35.24%	4.14%
Percent voting-age Hispanic, District 5	19.92%	12.29%	-7.63%
Percent voting-age Non-Hispanic Native American, District 1	1.93%	1.93%	0.00%
Percent voting-age Non-Hispanic Native American, District 2	2.37%	2.57%	0.20%
Percent voting-age Non-Hispanic Native American, District 3	2.69%	1.69%	-1.00%
Percent voting-age Non-Hispanic Native American, District 4	2.40%	4.03%	1.63%
Percent voting-age Non-Hispanic Native American, District 5	55.19%	58.95%	3.76%
Percent voting-age Non-Hispanic Black, District 1	0.35%	0.32%	-0.03%
Percent voting-age Non-Hispanic Black, District 2	0.22%	0.27%	0.05%
Percent voting-age Non-Hispanic Black, District 3	0.35%	0.50%	0.15%
Percent voting-age Non-Hispanic Black, District 4	0.73%	0.39%	-0.34%
Percent voting-age Non-Hispanic Black, District 5	0.48%	0.58%	0.10%
Percent voting-age total minority residents, District 1	8.97%	8.73%	-0.24%
Percent voting-age total minority residents, District 2	10.91%	11.10%	0.19%
Percent voting-age total minority residents, District 3	23.12%	22.34%	-0.78%
Percent voting-age total minority residents, District 4	35.12%	40.70%	5.58%
Percent voting-age total minority residents, District 5	76.31%	72.29%	-4.02%

Changes to DRAFT PLAN 2:

1. Moved Sierra Ancha precinct from CCD3 to CCD5
2. Moved blocks at north end of Claypool 3 precinct from CCD4 to CCD3
3. Moved blocks at south end of Central Heights precinct from CCD3 to CCD4
4. Moved blocks in East Globe precincts, north of Highway 60, from CCD5 to CCD4