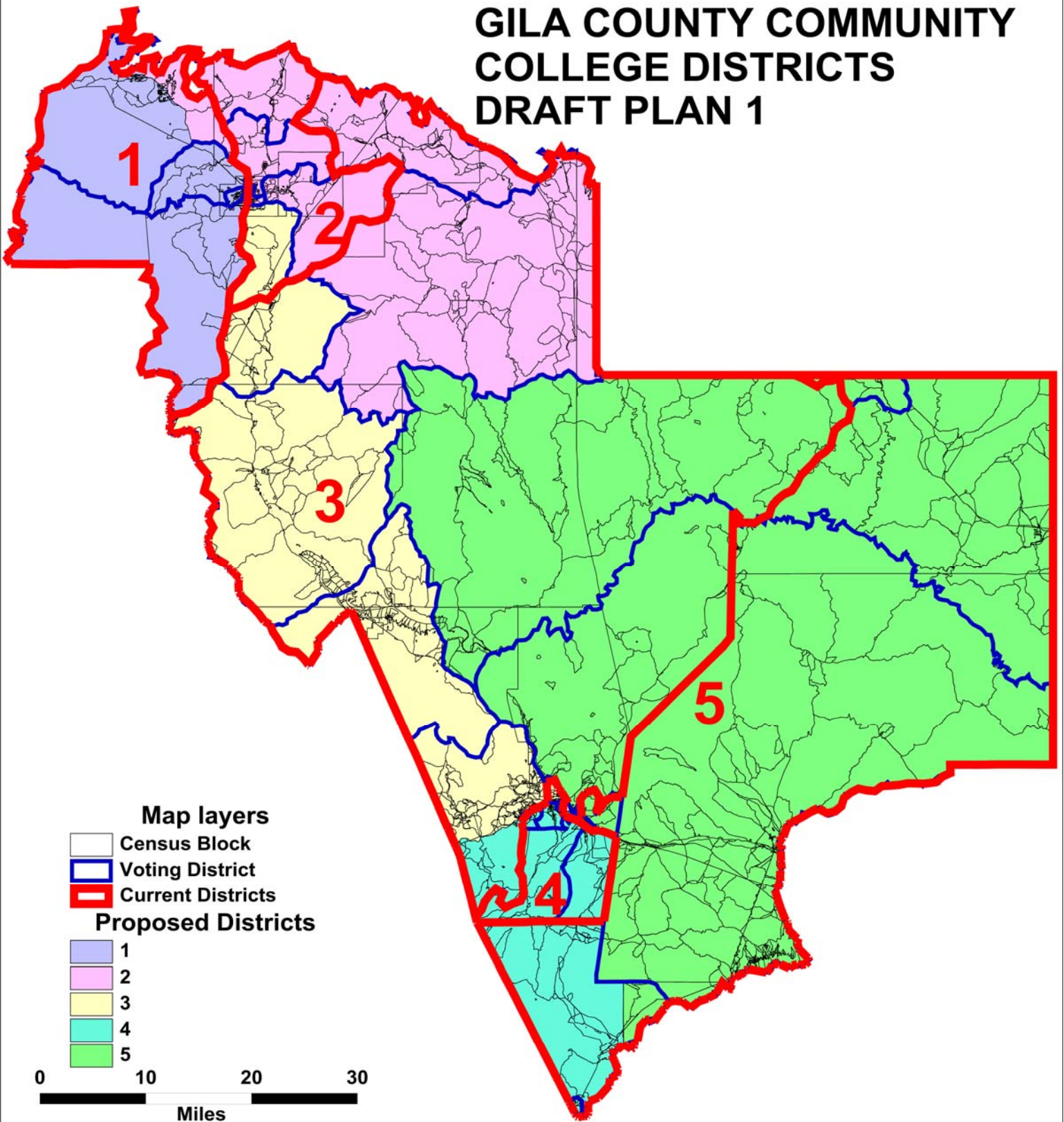
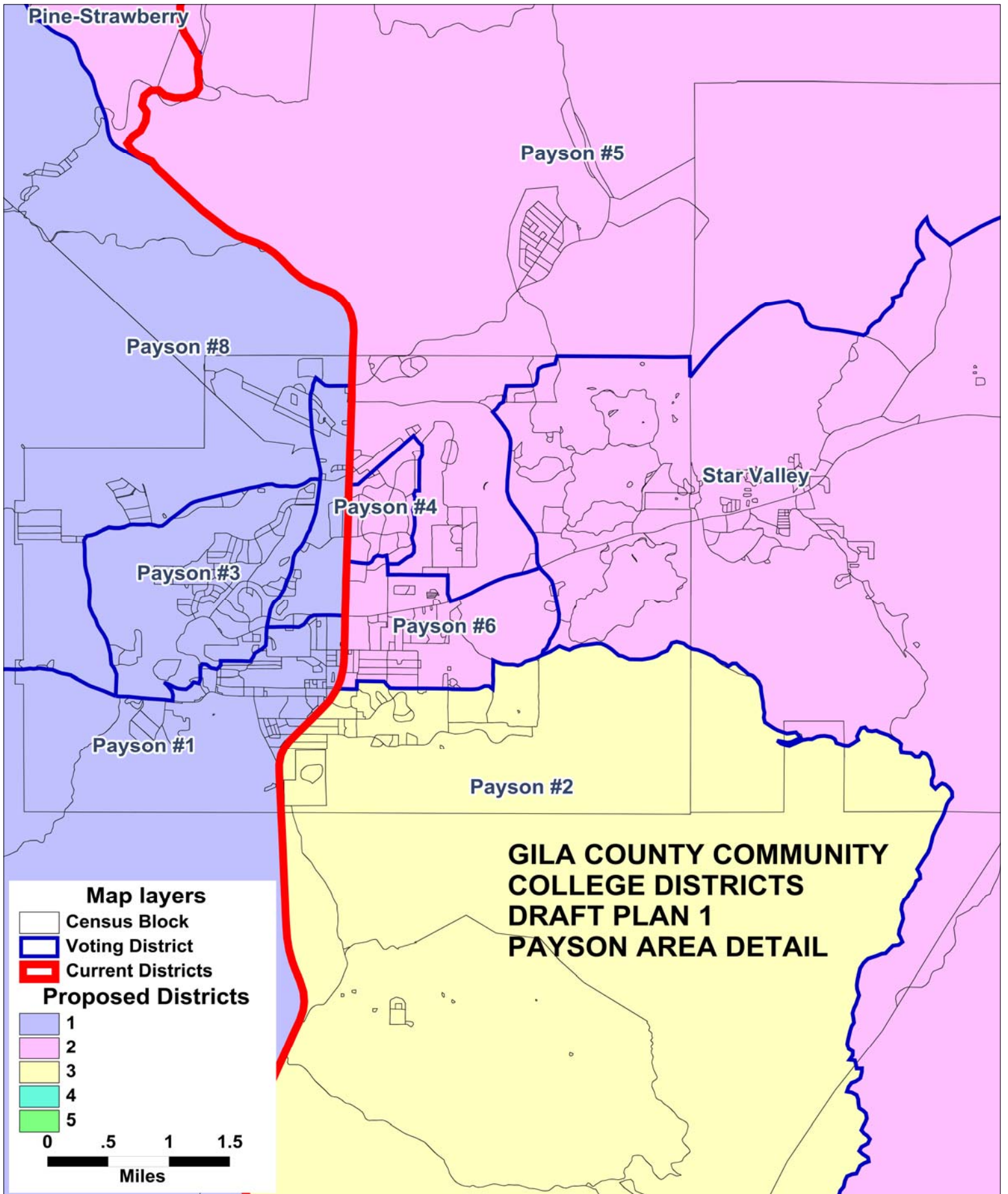
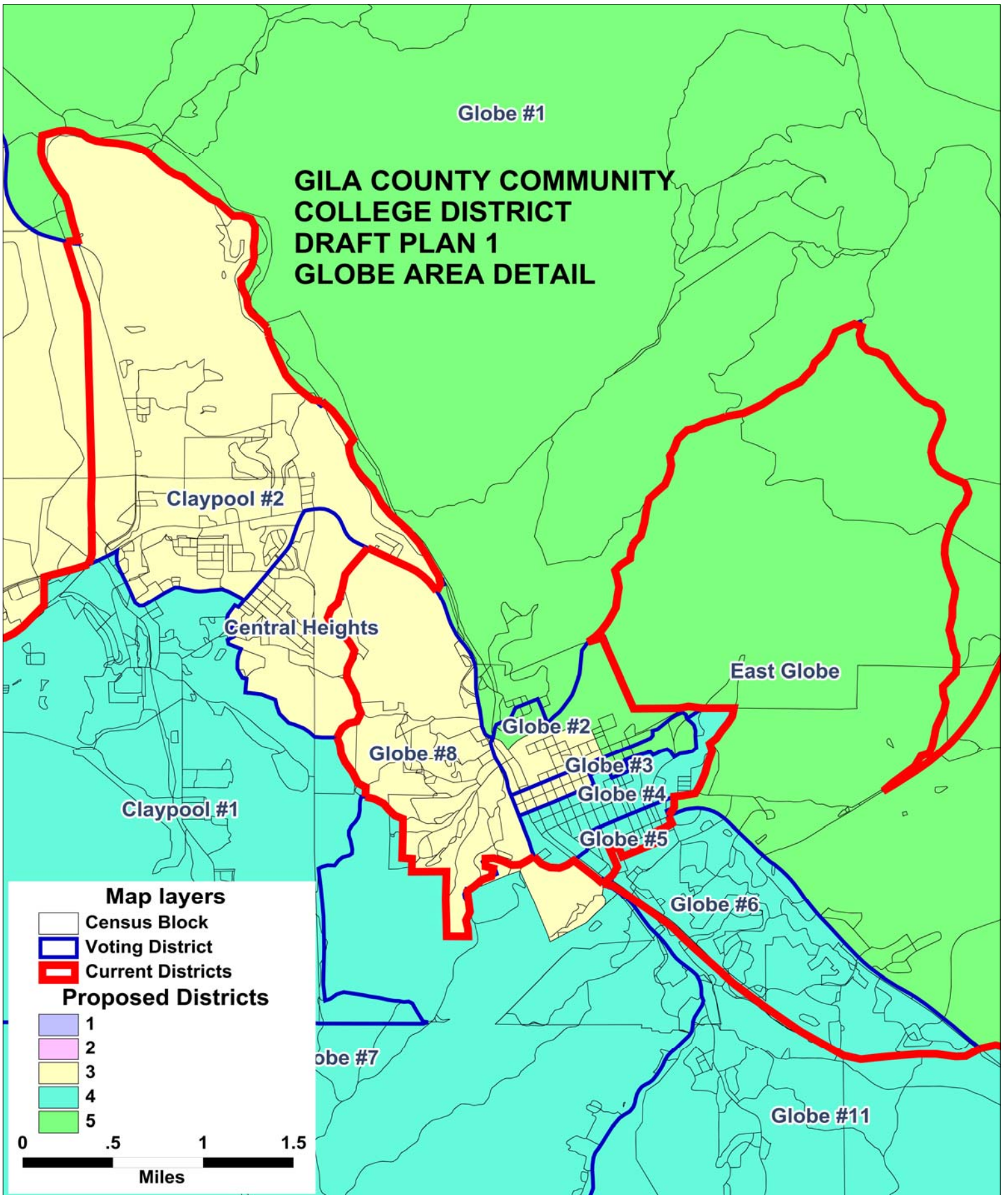


GILA COUNTY COMMUNITY COLLEGE DISTRICTS DRAFT PLAN 1





GILA COUNTY COMMUNITY COLLEGE DISTRICT DRAFT PLAN 1 GLOBE AREA DETAIL



**GILA COUNTY COMMUNITY COLLEGE DISTRICTS
TOTAL POPULATION BY RACE AND HISPANIC ORIGIN
DRAFT PLAN 1**

<u>Number:</u>	<u>District 1</u>	<u>District 2</u>	<u>District 3</u>	<u>District 4</u>	<u>District 5</u>	<u>Total, All Districts</u>
Hispanic, of any race	915	834	2,576	4,176	1,087	9,588
Non-Hispanic White	9,611	9,600	7,963	5,824	2,300	35,298
Non-Hispanic Black	55	46	49	59	39	248
Non-Hispanic American Indian	247	179	389	455	6,705	7,975
Non-Hispanic Asian	66	71	82	83	19	321
Non-Hispanic Hawaiian	13	14	10	2	0	39
Non-Hispanic other race	15	12	20	14	5	66
Non-Hispanic two or more races	8	11	13	14	16	62
Total Population	10,930	10,767	11,102	10,627	10,171	53,597
<u>Percent:</u>						
Hispanic, of any race	8.37%	7.75%	23.20%	39.30%	10.69%	17.89%
Non-Hispanic White	87.93%	89.16%	71.73%	54.80%	22.61%	65.86%
Non-Hispanic Black	0.50%	0.43%	0.44%	0.56%	0.38%	0.46%
Non-Hispanic American Indian	2.26%	1.66%	3.50%	4.28%	65.92%	14.88%
Non-Hispanic Asian	0.60%	0.66%	0.74%	0.78%	0.19%	0.60%
Non-Hispanic Hawaiian	0.12%	0.13%	0.09%	0.02%	0.00%	0.07%
Non-Hispanic other race	0.14%	0.11%	0.18%	0.13%	0.05%	0.12%
Non-Hispanic two or more races	0.07%	0.10%	0.12%	0.13%	0.16%	0.12%
Total Percent	100.00%	100.00%	100.00%	100.00%	100.00%	100.00%
Ideal Population	10,719	10,719	10,719	10,719	10,719	Total deviation: 931 8.69%
Total Population	10,930	10,767	11,102	10,627	10,171	
Numeric deviation from Ideal Value	211	48	383	-92	-548	
Percent deviation from Ideal Value	1.96%	0.44%	3.57%	-0.86%	-5.12%	

Source: Census 2010 Redistricting Data (Public Law 94-171) Summary file, Arizona
 Tabulation: Research Advisory Services, Inc., Phoenix AZ (602) 230-9580

**GILA COUNTY COMMUNITY COLLEGE DISTRICTS
VOTING-AGE POPULATIONS BY RACE AND HISPANIC ORIGIN
DRAFT PLAN 1**

	<u>District 1</u>	<u>District 2</u>	<u>District 3</u>	<u>District 4</u>	<u>District 5</u>	<u>Total, All Districts</u>
<u>Voting-Age Number:</u>						
Hispanic, of any race	564	554	1,753	2,908	740	6,519
Non-Hispanic White	8,254	8,276	6,739	4,702	1,951	29,922
Non-Hispanic Black	33	21	40	38	39	171
Non-Hispanic American Indian	183	138	261	315	4,248	5,145
Non-Hispanic Asian	52	55	66	65	14	252
Non-Hispanic Hawaiian	8	13	8	1	0	30
Non-Hispanic other race	6	9	17	8	4	44
Non-Hispanic two or more races	6	9	8	9	11	43
<i>Voting-Age Population</i>	9,106	9,075	8,892	8,046	7,007	42,126
<u>Voting-Age Percent:</u>						
Hispanic, of any race	6.19%	6.10%	19.71%	36.14%	10.56%	15.48%
Non-Hispanic White	90.64%	91.20%	75.79%	58.44%	27.84%	71.03%
Non-Hispanic Black	0.36%	0.23%	0.45%	0.47%	0.56%	0.41%
Non-Hispanic American Indian	2.01%	1.52%	2.94%	3.91%	60.63%	12.21%
Non-Hispanic Asian	0.57%	0.61%	0.74%	0.81%	0.20%	0.60%
Non-Hispanic Hawaiian	0.09%	0.14%	0.09%	0.01%	0.00%	0.07%
Non-Hispanic other race	0.07%	0.10%	0.19%	0.10%	0.06%	0.10%
Non-Hispanic two or more races	0.07%	0.10%	0.09%	0.11%	0.16%	0.10%
<i>Voting-Age Percent</i>	100.00%	100.00%	100.00%	100.00%	100.00%	100.00%

Source: Census 2010 Redistricting Data (Public Law 94-171) Summary file, Arizona







Tabulation: Research Advisory Services, Inc., Phoenix AZ (602) 230-9580

Race and Origin Composition of Current and Proposed Gila County Community College Districts DRAFT PLAN 1

Persons

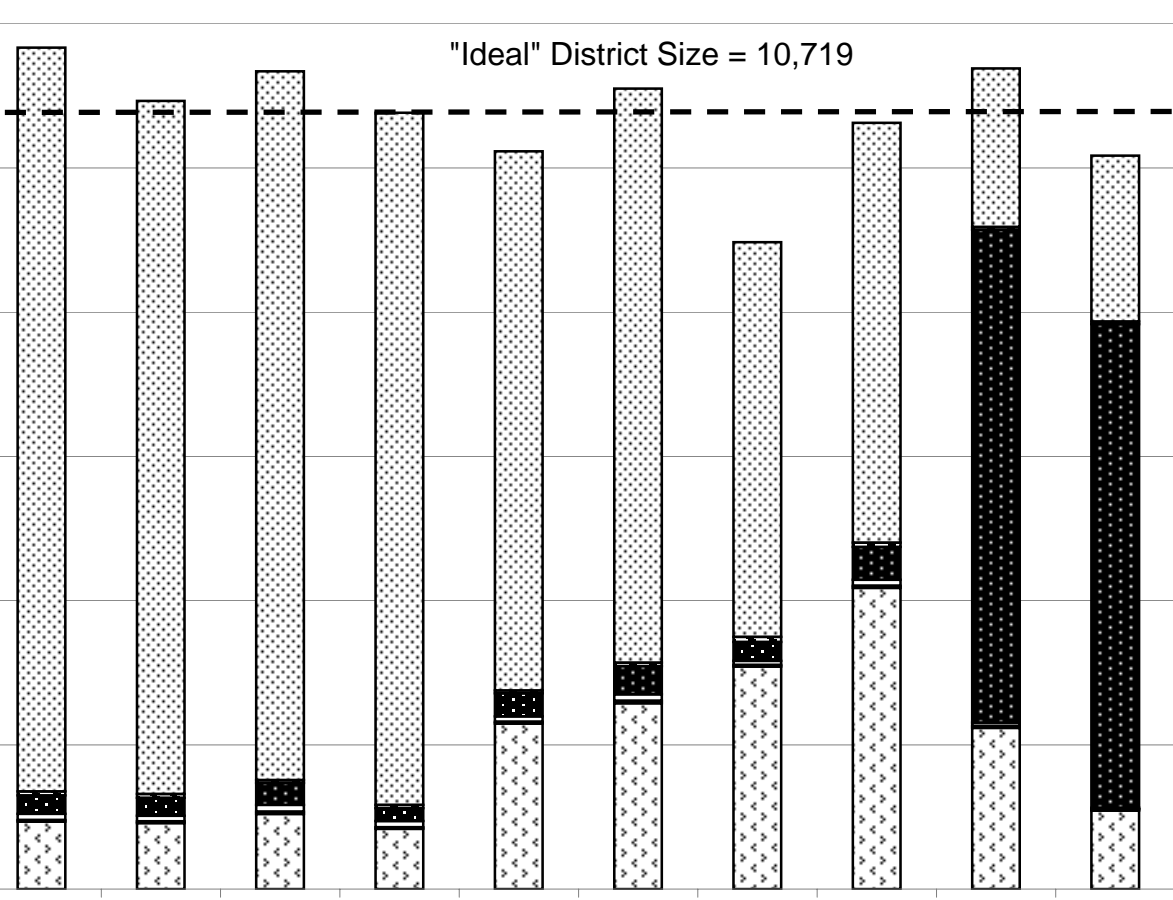
12000
10000
8000
6000
4000
2000
0

"Ideal" District Size = 10,719

-  Non-Hispanic White
-  Non-Hispanic Black
-  Non-Hispanic Indian
-  Non-Hisp. Asian/Hawaiian
-  Non-Hisp. Other/Multiracial
-  Hispanic

Source: Census 2010
Redistricting Data (Public
Law 94-171) Summary File,
Arizona

Current Proposed Current Proposed Current Proposed Current Proposed Current Proposed
District 1 **District 2** **District 3** **District 4** **District 5**



**GILA COUNTY COMMUNITY COLLEGE DISTRICTS
DRAFT PLAN 1**

	Current Districts	Proposed Plan	Change
Population, District 1	11,670	10,930	-740
Population, District 2	11,342	10,767	-575
Population, District 3	10,231	11,102	871
Population, District 4	8,972	10,627	1,655
Population, District 5	11,382	10,171	-1,211
Population deviation, District 1	951	211	
Population deviation, District 2	623	48	
Population deviation, District 3	-488	383	
Population deviation, District 4	-1,747	-92	
Population deviation, District 5	663	-548	
Percent deviation, District 1	8.87%	1.96%	
Percent deviation, District 2	5.81%	0.44%	
Percent deviation, District 3	-4.56%	3.57%	
Percent deviation, District 4	-16.30%	-0.86%	
Percent deviation, District 5	6.18%	-5.12%	
Total plan deviation, number	2,698	931	
Total plan deviation, percent	25.17%	8.69%	
Percent voting-age Hispanic, District 1	5.89%	6.19%	0.30%
Percent voting-age Hispanic, District 2	7.24%	6.10%	-1.14%
Percent voting-age Hispanic, District 3	19.20%	19.71%	0.51%
Percent voting-age Hispanic, District 4	31.10%	36.14%	5.04%
Percent voting-age Hispanic, District 5	19.92%	10.56%	-9.36%
Percent voting-age Non-Hispanic Native American, District 1	1.93%	2.01%	0.08%
Percent voting-age Non-Hispanic Native American, District 2	2.37%	1.52%	-0.85%
Percent voting-age Non-Hispanic Native American, District 3	2.69%	2.94%	0.25%
Percent voting-age Non-Hispanic Native American, District 4	2.40%	3.91%	1.51%
Percent voting-age Non-Hispanic Native American, District 5	55.19%	60.63%	5.44%
Percent voting-age Non-Hispanic Black, District 1	0.35%	0.36%	0.01%
Percent voting-age Non-Hispanic Black, District 2	0.22%	0.23%	0.01%
Percent voting-age Non-Hispanic Black, District 3	0.35%	0.45%	0.10%
Percent voting-age Non-Hispanic Black, District 4	0.73%	0.47%	-0.26%
Percent voting-age Non-Hispanic Black, District 5	0.48%	0.56%	0.08%
Percent voting-age total minority residents, District 1	8.97%	9.36%	0.39%
Percent voting-age total minority residents, District 2	10.91%	8.80%	-2.11%
Percent voting-age total minority residents, District 3	23.12%	24.21%	1.09%
Percent voting-age total minority residents, District 4	35.12%	41.56%	6.44%
Percent voting-age total minority residents, District 5	76.31%	72.16%	-4.15%

Changes to DRAFT PLAN 1

1. Moved non-reservation part of Sierra Ancha precinct from CCD3 to CCD5
2. Moved southwest quadrant to Globe #2 precinct from CCD5 to CCD3.
3. Moved west half of Globe 3 from CCD5 to CCD3
4. Moved five blocks at the north end of Globe #7 from CCD4 to CCD3