

*M. J. Jones*

**GLOBE SURVEY.**

ENGINEERS'  
FIELD BOOK  
No. 403 F

**No 16.**

**94**

Water

# Pinal Cr. by Broad St. Bridge.

N. Creek bed. - W. of Bridge.

0+00 N. line of creek bed.

Transit at

0+00	L	145°40'	50.
		92°	35.
		44°	55.
		21°	80
		9°30'	110
	L	6°30'	150

Foot of bank

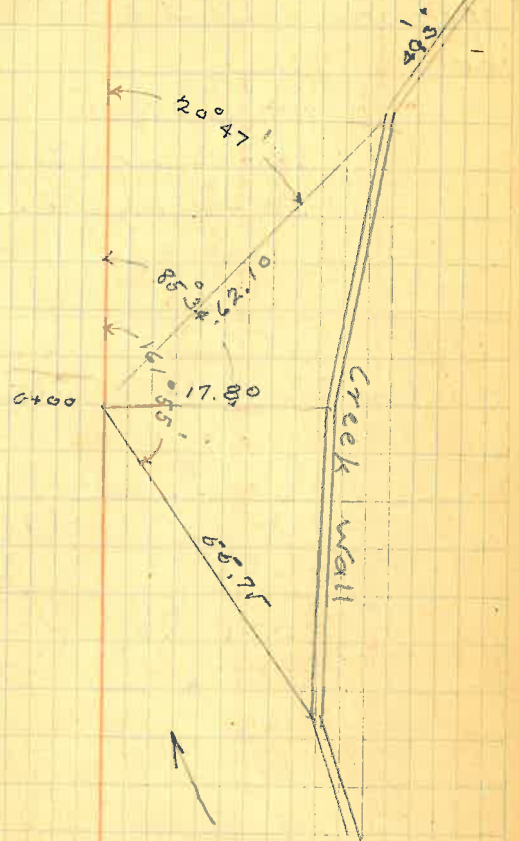
00	L	104°	105.
		89°	66
		54°	66
		29°	80
		16°	115
	L	11°40'	160

Sighting

down Stream,

Febr. 27 - 1930.

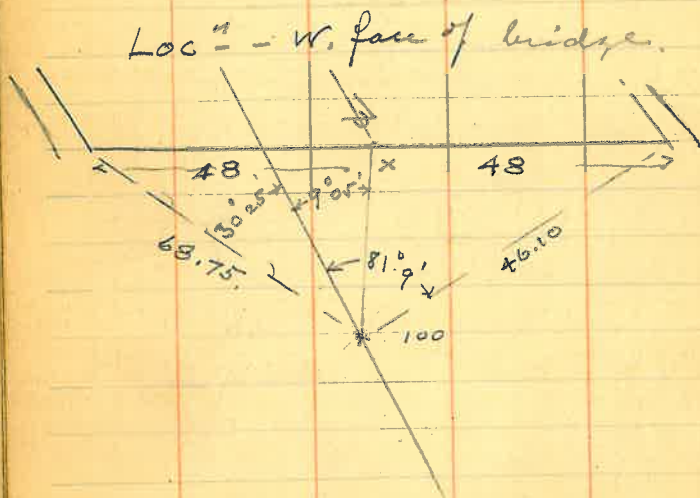
Wall along S. side Cr. - W. of bridge



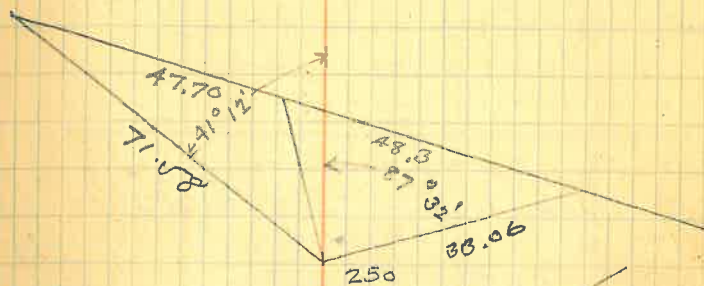
3  
 Loc. 1 of Cottonwood trees along N. bank  
 and W. of bridge -

Transit at sighting down stream  
 100

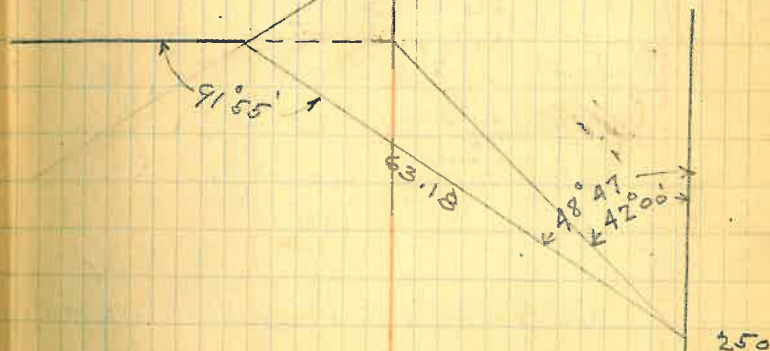
L. 117.° - 4 trees 37.  
 L. 68 - clump of 4 trees 25.  
 L. 32°40' - single tree 42.



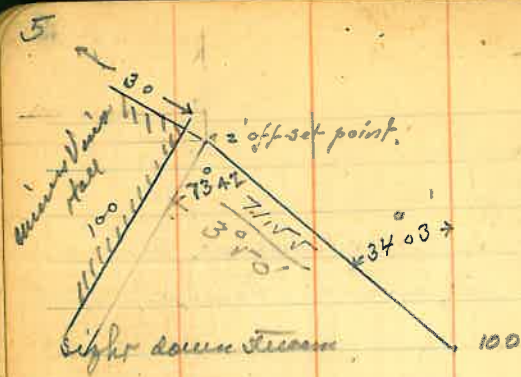
4  
 Transit over  
 250. - sighting up stream. -  
 Loc. 2 E. face of bridge.



concrete bldg.





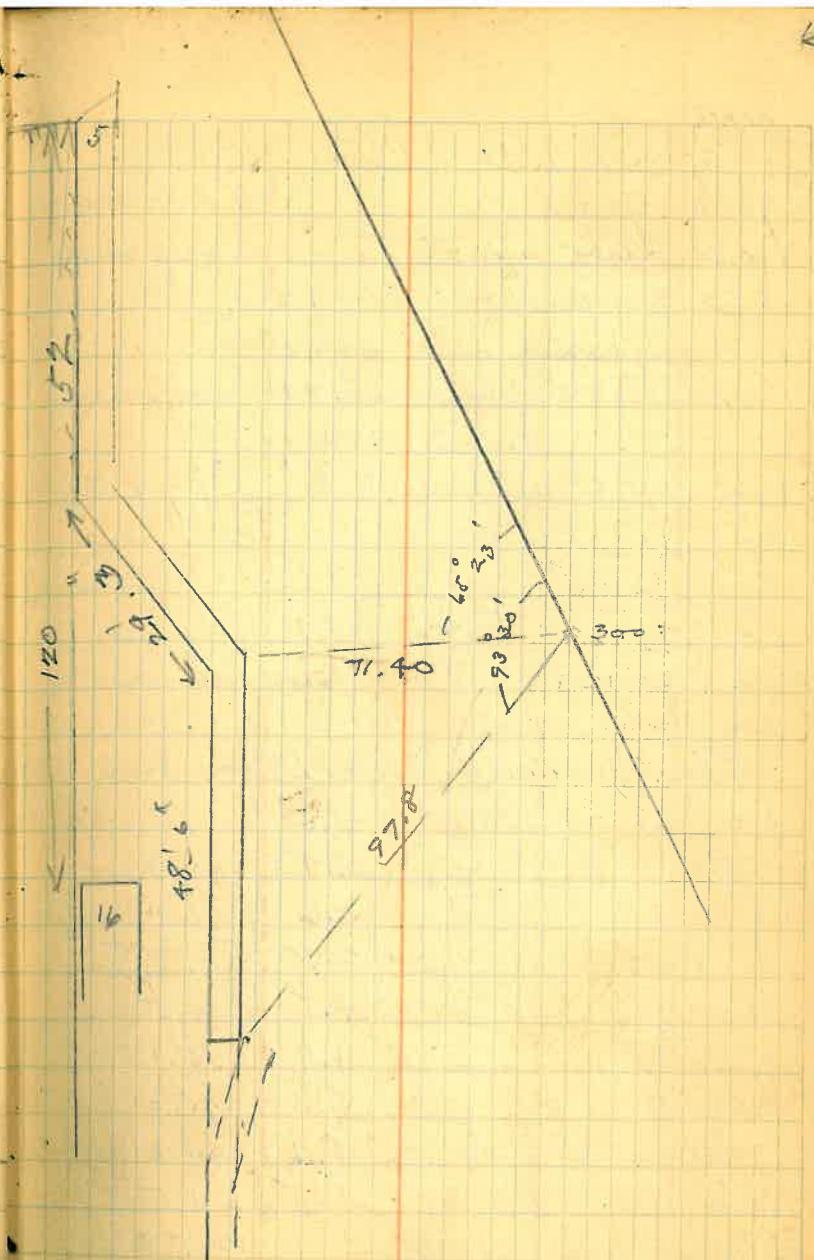


S. creek bed - E. of bridge.

300.- Sight up stream.  
Low water channel

L. 27° 40'	100
42°	73
73	Draw line 47
127°	Center piece to pt. → 34
155°	for locust channel 70
162	110
L. 170°	150

R. 160° 40' - 20 ft. to large Cotton Wood





S.W.  
S. creek bed E. of bridge Cont'd

400. - Light up stream.  
R. 90° - 10  
133° - 40  
128° - 84

400 - N. E. creek bed - Rock line - E. of bridge

R. 164° China 87  
L 163 " 57  
L 123 " 60

Elev<sup>n</sup> along Base Line

00	100	2.3	97.7
50		2.7	97.3
100		3.6	96.4
		+ 2.75	102.75
150		4.5	95.5
200		4.9	95.1
250		5.0	95.0
300		5.2	94.8
400		5.5	94.5
T.P. 00	9.66	111.44	101.78

H.I.  
111.44

work of bldg. 4.01 - 107.4  
Drive way deck. 4.65 106.79

cross-section drainage  
opening - right angle to stream.  
under bridge

H.I.  
100.40

N. abt. mt 2.00 98.00  
1/2 opening 4.50 95.50  
N. side copier. 5.00 91.00  
5 " " 2.50 97.50  
S. abt. mt 2.19 97.10

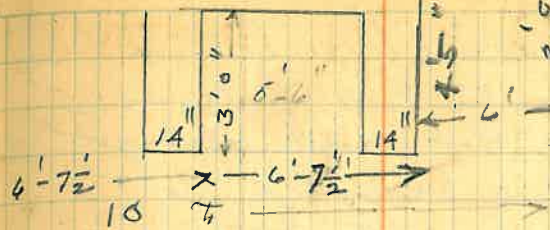
along E<sup>ly</sup> boundary line N. E. S.

0+00	101.93	+ 1.3	103.2	107.57	4.5
0+00		5.6	96.3		11.3
2		7.4	94.5		13.7
25		7.2	94.7		13.0
43		5.2	96.7		11.0
74		5.1	96.7		11.0
88		3.3	98.6		9.0
108		1.4	100.5		7.2



- 12.4" [ ]
- 20.72" [ ]
- 28.3" [ ]
- 36" [ ]
- 44.79" [ ]
- 53.9" [ ]
- 62.6" [ ]
- 71.86" [ ]
- 81.0" [ ]

493"



13 = 10  
6.75  
6-7 1/2

curb - 1'-6"  
side-walk - 6'-6"

9.86 111.64 101.78

curb way ramp

4.11	107.65	197.53	N.
3.95	107.65	107.70	4.
3.98	107.65	107.66	5.
3.04	106.60	106.59	16.
4.82	106.60	106.82	6.
5.03	106.60	106.61	5.

420.4

2<sup>nd</sup>

30

30

9.0

maple

90.0

30 21

429.4

60

Fairer

30 21

429.4

60

60

60

60

117.83

7

118.44

5

119.05

4

119.66

3 -



Surface Elevations  
along Center Line of Palace  
Garage Lot - and along  
said line extended to  
Bycamore Street.

B.M.	0.76	37.25		35.36.49
T.P.	2.75	30.33	9.67	27.58
			2.96	27.37
			3.78	26.55
			2.90	27.43
T.P.	7.04	35.76	1.61	28.72
			7.21	28.55
			5.29	30.47
			5.29	30.47
			3.20	32.56
			5.12	30.64
			10.20	25.56
			5.06	30.70
			9.30	26.46
			2.9	32.9
			1.9	33.9
T.P.	6.00	39.89	1.87	33.89

12  
Mch. 22 - 1930

J.W. & Rudy Wolf.

□ Cut in curb near F.H. at S. E. cor. Oak & Hill

Φ of Oak

Center

c. of post to Garage

3/4" water pipe in alley - Top of L.

Low floor at S. end garage

12 ft. S. from S. wall of Garage  
at S. end of repair shop.

Surface at S. end repair shop.

Top N. wall

Top 18" bottom of N. wall

Top of S. wall

Bottom of S. wall

10' S. of S. wall

15' " " " "

39.89	4.3	3535.6
	4.0	35.9
	9.70	30.19
	9.74	30.15
	11.0	28.90
	10.20	29.70

32.5' of S. wall

50' S. " " "

} side-walk at Sycamore

green

← Sycamore







Streets

Maple St.

Center line by Stewart's & points  
at 1<sup>st</sup> st. - Parker St. and 5<sup>th</sup> st.  
Extending this line w<sup>th</sup> to Hill St.

The three of points on tangent.

Locations from Q as run.

East St. S.E. cor.

inner edge of walk. 17.8 S.

S.W. cor. " 23.5 S.

High St.

S.E. cor.

Corner Con. wall High School 31.5 S.

S.W.

corn. curbing 27.3 S.

Deveraux.

S.E. cor. - cor. of. wall 30.24 S

S.W. " " 30.94 S.

N.E. - fence corner 24.75 N

N.W. - Bldg 22.6 N

End of walk. N. side Near Hill 18.2 N

W. line of Pl. 58 = E. line Sutherland  
from Maple St. line as run.

30.00 pt. -

0+00 theme meas. N<sup>th</sup>

52.57 obt bot line to E.

177.88 - Dist in walks & posts to E.

215.87 - 4x4 post and fence posts to E

244.15 4x4 " " " " "

285.40 obt property line to E. ?

346.59 Pat Rose's fence to E.

458.45 " " " at Cottonwood at

505.57 line of base of conct. wall on

S. edge of walk. -

- Record. -

14 - 62.5

13 - 62.5

12 -  $\frac{125.0}{62.5}$

11 -  $\frac{187.50}{45}$

10 -  $\frac{232.50}{50}$

9 -  $\frac{282.50}{10}$

8 -  $\frac{292.50}{25}$

7 -  $\frac{317.5}{36}$

6 -  $\frac{350.5}{111.1}$

5 -  $\frac{464.6}{111.1}$

4 -  $\frac{464.6}{111.1}$

3 -  $\frac{464.6}{111.1}$

2 -  $\frac{464.6}{111.1}$

1 -  $\frac{464.6}{111.1}$



## W. line of Devereed

E. line of Pl. 58, = W. line of Devereed.  
from Maple St. line as run.

30. — pt.  
= 0.00 Thence meas. N. by & Bldg in 7.505.  
44.00 - N. end of mark and line of old posts  
to west.
- 242.5 abt. property line to W.  
289.5 " " " " "  
370.7 " " " " "  
452.19 Centre of stump of old cedar post at Cottonwood

## Record.

1	-	50
2	-	50
		<u>100.00</u>
3	}	99.
4		199.00
5	}	97.74
6		296.74
7	-	83.34
		<u>380.08</u>
8.	-	83.33
		<u>463.41</u>

## E. line of Devereed

W. line of Pl. 33, = E. line Devereed  
from Maple St. line as run.

- 30 - mark on fence - Thence  
0+00 meas. N.  
92.14 - line of old fence posts to E  
154.69 - nail in ground - Old fence to E.  
217.71 - N. face of fence to E.  
274.16 - pipe fence to E.  
329.10 - " " " E.  
384.40 - S. end of curbing to N of fence line to E  
458.70 - N. face of curbing at Cottonwood.

## Abbecon's Record.

14	-	88.43
13	-	62.50
		<u>150.93</u>
12		62.50
		<u>213.43</u>
11		55.5
		<u>268.93</u>
10		50.5
		<u>324.43</u>
9		55.55
		<u>379.98</u>
8	-	74.55
		<u>454.53</u>

E. P. Geo. Shute - 90 x 97.5 mol.  
9-144 S.W. cor of Pl. 33

## East line of High

W. line of Bl. 28 = E. line of High.  
N. from Maple St. as run

- 30 - thence meas. N.  
0+00 old fence post hole.  
68.5 abt. property line to E  
127.63 old fence to E.  
161.55 S. face of 4x4 fence post, at S. end  
of work - fence to E.  
268.55 pipe post and fence to E  
318.31 4x4 post and fence to E  
373.17 corner of con. wall and wall to E.  
397.65 " " " " " " "

no other lot-line indications.

- Recount -

14	-	62.5
13	}	31.25
		93.75
		27.0
		121.25
12	-	55.
		156.25
11	-	31.25
		187.00
10	-	62.0
		250.0
9	-	62.5
		312.5
8	-	62.5
		375.0
		16
		391.0
7	-	62.5
		453.5



## West line of High

E. line of Pl. 33 = W. line of High.

N. fence line of Maple as run.

30.00 mark in curbing. -

0+00 thence meas. N.

109.49 pipe post and fence to W.

165.67 N. end of curbing and S. face of 6x6 post,  
old fence to W.220.44 N. face of 4x4 post on S. end of curbing,  
fence to W.

277.27 N. end of curbing. - fence to W.

385.68 abt. property line to W.

no other lot line indications

## - Assessor's Records. -

1	-	111.1
2	-	55.55
3	-	166.67
		55.55
4	-	222.20
		55.55
5	-	277.75
		55.55
6	-	333.30
		55.
7	-	388.30
		27.
		415.30
		46.67
		461.97

## S. on East Side Devereux.

30.- thence meas.

0+00

0.25 cor. of concrete wall.

115.00 center of 4x4 post - fence to E

171.05 S. end of Tufa rock coping.

X 282.16 S. end of con. fence curbing. line hedge to E

424.4 abt. Ash S. - N. line.

S. on W. side High from Maple

30.00 from ~~Q~~ as run  
 00 thence  
 113.14 6x6 post and fence to W,  
 168.43 6x6 " " " " "  
 279.66 pipe post and fence to W,  
 420.94 abt. line of Ash St. N. line.

S. on E. side High from Maple.

30.00 from Maple St. ~~Q~~  
 04.00 thence  
 1.00 cor. of Con. wall High School ground  
 284.71 fence to E. - (school ground fence  
 (irons in ground set 0.5 N. of fence line)  
 420.54 - Iron post at Ash St.  
 421.00 South face base of wall at cor.



D, on W. side East St. from  $\phi$   
on Maple as run.

30.0 pt. thence  
0+0  
7.89 N. face Column at N.E. cor High School  
250.68 abt. fence to W. (school fence)  
305.50 fence to W.  
362.15 " " "  
419.08 about N. line of ash.

Maple St. - Meas. along  $\phi$

0+00 Pt. on E. line G.T.  
75.3 abt. line of fences to N. (Exp. East St)  
82.57 nail " " " " S. ( " )  
104.82 C.P. in East St.  
140.14 nails line E face High School to S.  
242.75 abt. line of fence to N.  
366.92 nail & abt. line of fence to N.  
& line of H.S. wall to S.  
427.47 nail & abt fences on E & W on High  
561.15 abt fence to N. (Schuel's E fence)

May 19 - 30

664.91 nail in parent. and abt. line of  
fence to N. - (Devereux St) and  
abt. line of wall to S.

702.97 nail

705.57 abt. line of school fence to S.

712.88 " of E face store to N.

834.59 abt. property line to N. (Burns)

869.18 nail -

935.4 abt. fence line (E line Switzerland) to N

937.34 nail and rag at Hill St. -

960.04 P.I. with  $\phi$  of Switzerland as  
104.82 run.

855.22

960.04 is

180

675.22 = Distance on C.L. of

225.07

Maple betw. E. line G.T. & Swiss  
Center lines -

2.22

4.83

75.37

225.12

Bl. 25-32-40

15



Loc<sup>n</sup> of N<sup>41</sup> side line of  
Maple St.

Center line as run (p. 17)

See Map L.S. 63  
Distances along CL line of  
Maple St.

00.	W. line of alley in Bl. 3 - E. Globe T.	
30.36	E. line of Globe T.S.	
+ 74.64		
105.00	E. line of East St.	105.00
+ 60.00		
165.00	W. " " " "	170.50
+ 226.88		
391.88	E. line of High St	277.28
+ 60.		
451.88	W. " " " "	417.83
+ 226.88		
678.76	E. line " Deveraux St	692.26
+ 60		
738.76	W. " " " "	730.93
+ 226.88		
965.64	E. " Dutchland	925.74
		22.90

0.21 - 30  
Meas. along 10 ft. offset line  
and set pts. at. (see p. 31)

	Maple Street
Meas. along <u>CL</u>	Globe Tannite line
74.83	East line of East St.
30	
104.83	CL of East St.
30	
134.83	W. line East St.
225.12	Dist. 28
359.95	E. line of High
30	
389.95	CL of High
30	
419.95	W. line of High
225.12	131.33
645.07	E. line of Deveraux
30	
675.07	CL of Dev.
30	
705.07	W. line of Dev.
225.13	
930.20	E. line of Dutchland
30	
960.20	CL of Dutchland
	W. line of Dutch.



✓ 0+00 in line of W. line alley

+ 27 ✓

+ 54 ✓

+ 81 ✓

10 ft

1+00 ✓

117.5 ✓ End - East st. Culvert.

167.4 W " " " "

200. ✓

223.0 ✓ line fence to N.

1/2 227+00 ✓

252

273.5 ✓ line of fence to N.

300 ✓

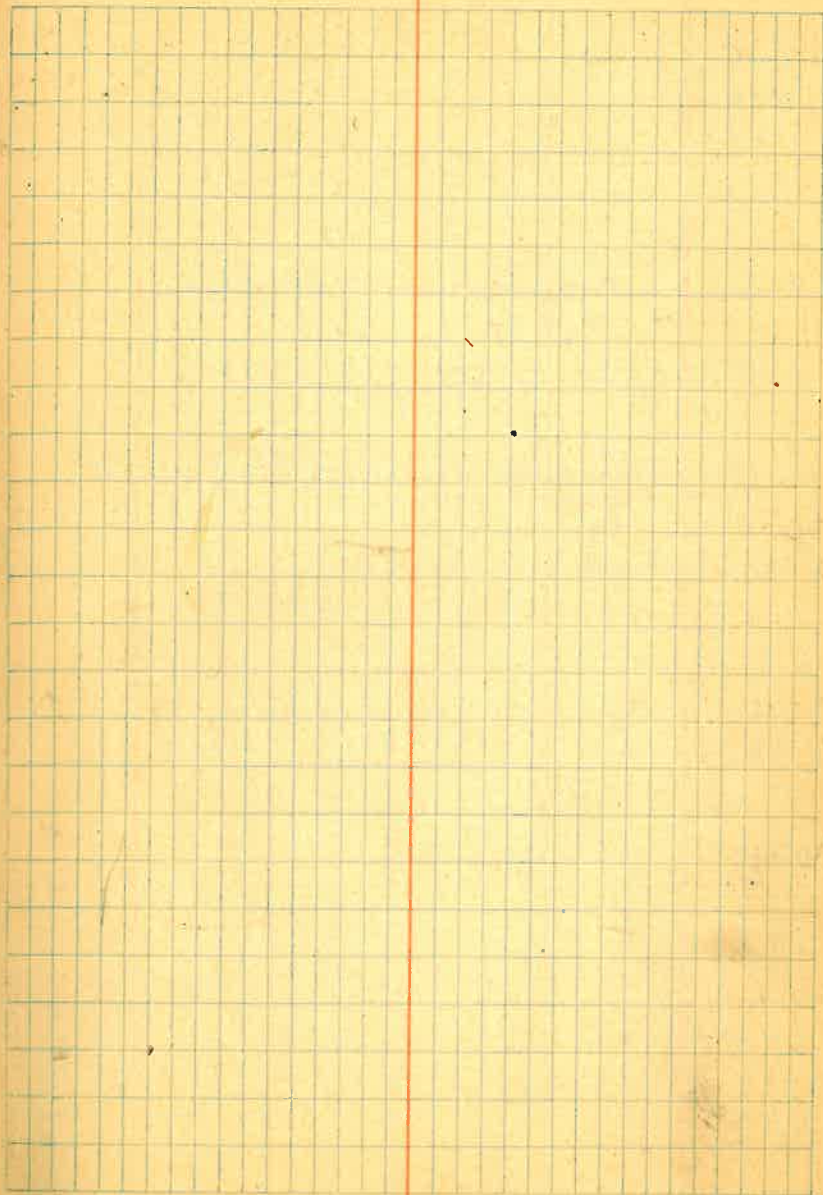
320 ✓ line of fence N.

~~327~~  
300 ✓

327 ✓

354 ✓

381 ✓





400

406.7 E. end Culvert at High.

408 cent + top of culvert

451.90 W. end of High St. Culvert

500

521

548

600

646

671

683

Sept 20 - 20

pm + RW.

North St.

from 3" pipe with cap (0.7) set for  
N.E. cor. Globe Townsite meas. W.  
along N. line.

- 0 + 00  
113.90 line of pipe post (fence) E. side of  
East St. to S.  
1761.7 line of wooden fence (old) to S.  
at W. line of East St.  
461.0 abt. line of fence on E. side of  
High to S.  
463.0 D<sub>0</sub> on W. side High to S.  
187.6 D<sub>1</sub> on E side Dev. X E.S.  
707.57 Center of 3" corner pipe post for  
S.W. cor School ground  
727.0 abt. line of property fence to N.  
894.15 line of pipe & wire fence to N.  
972.75 abt. line of fence on E. side Sutherland  
1003.0 D<sub>0</sub> on W. side S-  
1115.9 W. face of Concrete wall at  
E side of Chrysocola St.  
1147.7 wooden fence on W. side S- St

Set pt. for C. of Sutherland at

1003.35 B.10 - p. 174

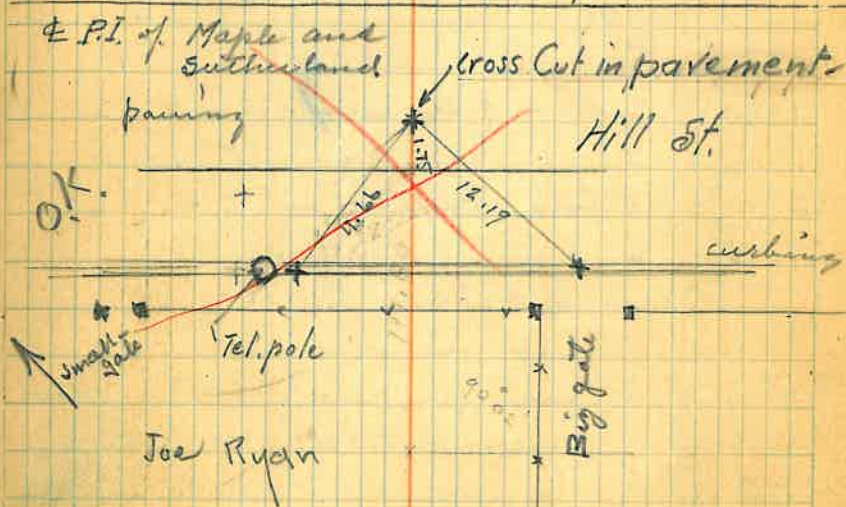
+ 21.48 in purple -

29.25  
20.67

112.44

Sutherland St.  $\Phi$ for New  $\Phi$  see p. 48

By point at North St. (p. 37) and  
pt. at Mesquite St. (B.14 - p. 64)  
Reverse and extend this line S. to Maple  
Mesquite St. - - - - - see Stewart's pt.  
Cedar St. - Stewart's pt. is 0.20 W.  
Oak. - 29.85 E. to cor. wall. S.E. cor Oak St.  
Cottonwood - 20.67 E to cor. of wall. S.E. cor. Cottonw.  
Hill St. - sharp pt. of interest. - 31.12 W.

P.I. with  $\Phi$ . angle N to E =  $90^{\circ}01'$ 



Devereux SE. to N.

R. Δ from Maple

at Maple

27.30 W. to Bldg N.W. cor.

22.14 E. to cor. wall

17.02 E to Canal wall - abt 50' S. of Canaanabt Syc. Canaan16.07 E. to W. end wall N.E. cor. Canaan

27.04 W to Cor. wall NW " "

Devereux SE to S.

26.77 E. to S. end fence curbing - p. 244

31.30 W. to main face School (S. end.)

31.35 W. to " " " (N. end)

23.10 E to Cor. wall, S.E. cor. ✓

29.73 W to " " S.W. "

Extend  $\Phi$  of Dev. to N.Sycamore

29.37 E to street line mark on Can wall

29.61 E to Fence post N.E. cor. Syc.

29.75 E to " " abt 146 ft. N.

B.M.	9.58	49.61		3540.03
T.P.	7.76	56.97	0.40	49.21
B.M.			2.31	54.166
T.P.	3.22	56.48	3.71	53.26
B.M.			4.45	52.03
T.P.	8.36	61.75	3.09	53.39
B.M.			3.01	58.74
T.P.	11.12	72.86	0.01	61.74
B.M.	9.05	3580.75	1.16	3571.70

		0+00		
10' L		3580.75	1.25	79.5
C.			1.5	79.25
6 R			1.5	79.2
6 R			4.9	75.8
10 R			1.45	79.3
10 R			6.1	74.6
13 R			1.4	79.3
13 R			4.1	76.6

- cut in S. end Bridge Curve, Hill Station, on low step at S. end of E. parking.
- cut in curbing of walk at sharp cor. of Hill + Maple (school corner)
- cut in curbing to walk S.E. cor Maple and Bennett
- cut in Curbing S.E. cor Maple + High
- cut in Curbing S.W. cor Maple + East

parcament







11.6 L

C

2 R

6 R

9 R

11 R

17 R

1+00

3580.75

6.7 74.0

6.8 74.0

8.3 72.4

11.4 69.3

10.7 70.0

10.4 70.3

6.8 74.0

1+17.5

3580.75

7.4 73.3

7.4 73.3

8.70 72.0

13.10 67.6

8.7 72.0

13.10 67.6

8.9 71.8

71.70  
1.64

1+67.4

12 L

C

6'2" R

6'2" R

10'2" R

10'2" R

15 R

73.34

1.96 71.38

2.4 70.9

2.6 70.7

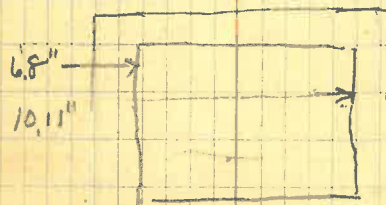
7.2 66.1

2.6 70.7

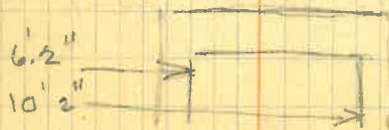
7.2 66.1

2.6 70.7

To page 51



8" deck







## High St. South

- 37.04 W. to concrete fence base, S.W. cor. Maple  
 23.05 E. to High School. Wall corner - Maple  
 31.60 approx. W. to line fence - N.W. cor. Ash  
 29.56 E. to base of fence post. NE

## High St. North

- 37.55 to cor. Low wall N.W. cor. Maple  
 19.80 E. to 4x4 post (p. 21 - pt. 161.55)  
 40.25 W. to fence cor. (p. 22 - pt. 220.44)  
 17.75 E. to 4x4 post (p. 21 - pt. 318.31)  
 16.50 E. to corner cor. post (p. 21 - 377.65)  
 31.0 E. to 2" p. 4ft. N. of last pt.  
 30.3 W. to S. end wall at N.W. cor. Cotton wood  
 22.6 E. to wall at N.E. cor. Cotton wood.

East Street South.  
 angle with Maple =  $90^{\circ}00'00''$

- 22.5 E. to fence cor. SE cor. Maple.  
 34.75 W. to school cor. S.W. cor. Maple  
 Ash. 28.25 E. to N.E. cor. Ash.  
 24.70 E. to SE cor. Ash.  
 25.27 W. to S.W. cor. Ash.

## East St. North.

- 38.50 W. to concrete wall cor. S.W. cor. Cotton  
 38.26 W. to " " " " N.W. " "  
 29.87 E. to " " " " N.E. " "



2+00

357334

12' 4" L

C

5 R

6 R

9 "

10 "

12 "

3.6 3569.7

5.4 67.9

7.0 66.3

9. 64.3

9. 64.3

6.3 67.0

~~6.3~~ 67.0

2+27

73.34

12' 8" L

7 L

C

3 R

5

6

12

5.3 68.0

5.6 67.7

7.6 65.7

9.4 63.9

9.4 63.9

7.7 65.6

7.7 65.6

3573.34

8.08

3565.26

+ 1.21

3566.47

12 H R 5 fence

Pascament

2+52

3566.47

L 12		+0.2	66.7
L 8		0.6	65.9
L 3		3.	63.5
C		3.4	63.1
R 3		2.	64.1
R 15		2.	64.1

✓ 3+00

P 12.8	66.47	2.35	64.12
L 9		2.7	63.8
L 3		6.	60.5
C		4.8	61.7
R 4		3.3	63.2
R 10		3.3	63.2

✓ 3+27

L 13	66.47	4.00	62.5
L 10		4.3	62.2
L 5		6.8	59.7
C		6.4	60.1
R 5		4.8	61.7
R 10		4.4	62.1

11' 7" N. 1/2 concrete steps (N=09°)



3 + 54  
3566.47

L	13.6	5.6	60.9
L	9.	5.6	60.9
L	+	7.7	58.8
C		7.7	58.8
R	7	5.3	61.2
R	10	5.3	61.2

3 + 81 ✓

L	13'10"	6.7	59.8
L	8.	6.9	59.6
L	3	9.2	57.3
C		9.2	57.3
R	7.	6.3	60.2
R	10	6.6	59.9

4 + 06.7 ✓  
3566.47

14'10" L	7.6	58.9
3 L	8	58.5
3 L	11.55	54.9
C		
17" R	11.55	54.9
17" R	8.	58.5
R	8.	58.5

3566.47  
7.72  
58.74  
2.70  
61.44

~~406.7~~  
~~26~~  
~~381~~  
~~26~~  
407



filled max 1'8"  
over bottom

$$\begin{array}{r} 4+51.9 \\ \hline 3561.44 \end{array}$$

L 13' 6"	3.7	57.7
L 3' 8" }	4.3	57.1
	7.72	53.7
C		
R 1' 2" }	4.3	57.1
	7.72	53.7
R 10	4.2	57.2

$$\begin{array}{r} \sqrt{+00} \\ \hline 3561.44 \end{array}$$

L 14' 6"	5.3	56.1
10.	5.6	55.8
6	6.9	54.5
C	6.9	54.5
R 3.	6.5	54.9
R 7' 8"	6.2	55.2
	5.15	55.3

$$\begin{array}{r} 5+48 \\ \hline 3561.44 \end{array}$$

L 15.	6.9	54.5
10.	7.	54.4
7.	8.8	52.6
C	7.5	53.9
R 7.	7.5	53.9
	6.7	54.7

w. line High St.


 find in 1' 8"  
 sand

406.7
45
451.7
427.4
30.36
447.76
6.7
451.

 at Cooping  
 on Cooping

 at Cooping  
 on "



	6+00		
	3556.15		
L 15' 8"		3.0	53.2
9.		3.	53.2
4.		5	51.2
0		4	52.2
R 6' 5"		3.6	52.5
		3.26	52.9

6+46  
3556.15

L 16.		3.82	52.3
8		4.2	52.0
6		7.0	49.2
4		7.	49.2
2		5.2	51.0
C		4.8	51.3
R 5.6		4.8	51.3
		4.7	51.4

6+83

L 17.	3556.15	4.7	51.1
9.		5.	51.2
2.		8	48.2
C		8.1	48.1
		8.50	47.7
		5.50	50.6
		5.5	50.6

61.44

8.25

53.19

2.96

56.15

4.13

52.02

to Cooping  
on "

Reinforcement

at Cooping  
on "

To R. 4' 0" - 3' X 4' opening 4" slab  
floor of culvert on Det.  
Top " "

Rev. St. Univ.

New side walk for  
sid. Burns, on Duquesne.

Tr. at Cr. Duquesne & Maple  
Set C.P.s on Duquesne from  
which I locate

29.20 to N. end of side walk at  
property N.W. cor. maple  
25.47 to east face of curb #378 -  
25.86 " " " - N. end of  
same;

Set iron for line of east face  
of  $4\frac{1}{2}$  ft walk at 29.20  
W of it - to conform with  
walk constructed to 5.

P. 41. 2.96 54.99 3552.03

4.36

6.09 48.90

6.28 48.71

7.10 47.89

35 48.50

— .61 =  $7\frac{1}{2}$  ft

Nov. 7 - 30

□ in curb SE cor maple & Duquesne  
side walk N/E " " "

N. end of walk at curb

S " " curb #378

Top of iron spike set for line of walk

Elev. of curb side of walk at Iron set

above Iron —









0+25	1)	79.43	9.20	70.2
	2)		8.10	71.3
	3)		7.00	72.4
	4)		6.2	73.2
	5)		5.8	73.6
+50	1)		7.5	71.9
	2)		7.2	72.2
	3)		6.3	73.1
	4)		5.8	73.6
	5)		5.0	74.4
+75	1)		5.7	73.7
	2)		5.2	74.2
	3)		4.7	74.7
	4)		4.7	74.7
	5)		4.3	75.1
1+00	1)		4.6	74.8
	2)		4.0	75.4
	3)		3.0	76.4
	4)		3.2	76.2
	5)		3.0	76.4
1+25	1)		3.7	75.7
	2)		3.2	76.4
	3)		1.4	78.1
	4)		1.6	77.8
	5)		0.4	79.0

		3579.43	+ 0.01	79.44
		9.43	88.87	
1+50	1)			11.7 77.2
	2)			10.7 78.2
	3)			8.9 80.0
	4)			8.9 80.0
	5)			8.4 80.5
1+75	1)			9.9 79.0
	2)			8.5 80.4
	3)			6.5 82.4
	4)			6.4 82.5
	5)			5.5 83.4
2+00	1)			7.4 81.5
	2)			6.0 82.9
	3)			3.6 85.3
	4)			3.2 85.7
	5)			2.7 86.2
2+25	1)			4.2 84.7
	2)			2.9 86.0
	3)			0.2 88.7
	4)			+ 0.5 89.4
	5)			+ 1.0 89.9
		10.44	99.22	0.09 88.78
2+50	1)			11.6 87.6
	2)			10.1 89.1
	3)			7.2 92.0
	4)			6.8 92.4
	5)			5.7 93.5



2+75	1)	3599.22	7.9	91.3
	2)		6.1	93.1
	3)		4.2	95.0
	4)		3.8	95.4
	5)		2.6	96.6
3+00	1)		4.8	94.4
	2)		2.9	96.3
	3)		1.0	98.2
	4)		0.5	98.7
	5)		0.4	98.8
		10.52	3609.64	0.10
3+25	1		11.4	98.2
	2		9.9	99.7
	3		8.1	01.5
	4		8.0	01.6
	5		7.7	01.9
3+50	1		7.4	02.2
	2		6.8	02.8
	3		5.6	04.0
	4		6.3	03.3
4+1			6.3	03.3
4+1			3.6	06.0
	5		3.6	06.0

3+75	1	3609.64	4.5	05.1
	2		3.8	05.8
	3		2.7	06.9
	4		3.1	06.5
	5		3.1	06.0
		10.65	20.27	0.02
				09.62
4+00	1		10.8	09.5
	2		10.5	09.8
	3		9.9	10.4
	4		10.3	10.0
	5		10.2	10.1
4+25	1		6.2	14.1
	2		6.5	13.8
	3		6.5	13.8
	4		7.6	12.7
	5		7.9	12.4
4+50	1		2.9	17.4
	2		3.0	17.0
	3		2.9	17.4
	4		3.5	16.8
	5		4.3	16.0
4+64	1		0.7	19.6
	2		1.0	19.3
	3		1.1	19.2
	4		1.6	18.7
	5		1.0	19.3



79

Ball Park  
Back wall drainage

0	3.82	103.82	100
50			6.40 97.4
100			5.40 98.4
150			5.20 98.6
200			4.0 99.8
250			5.30 98.5
300			6.0 97.8
350			8.1 95.7
400			9.5 94.3

80  
Mch. 26 - 34 -

	Grade	Rad.
90 -	98.5	5.32
100 -	98.33	5.49
125 -	97.92	5.90
150 -	97.50	6.32

Mch - 27 - 34  
J.M. - Dan Tracy.

T.J. Long to City of Globe.  
Portion of lot 12 - 131.32 - G.T.S.

Meas. <sup>way</sup> 60 ft from line of fence N.E. cor.  
High. - abt. line of fence to N.  
thence

118. - abt fence line to North  
147.42 W end of walk

Ash St. -  $\frac{1}{4}$  of par. <sup>nt</sup> by pts. as by  
State High way map. (of new proposed  
par. <sup>nt</sup>)

Devereux east line. - by

Maple St. - High to Devereux. Measurement.

0 = abt true west line of High

- 7 - fence cor. S.W. cor High.
- 118.2 - Stewart's east cor.
- 178.85 - west "
- 231.7 - Wall and fence cor. SE cor New.

maple

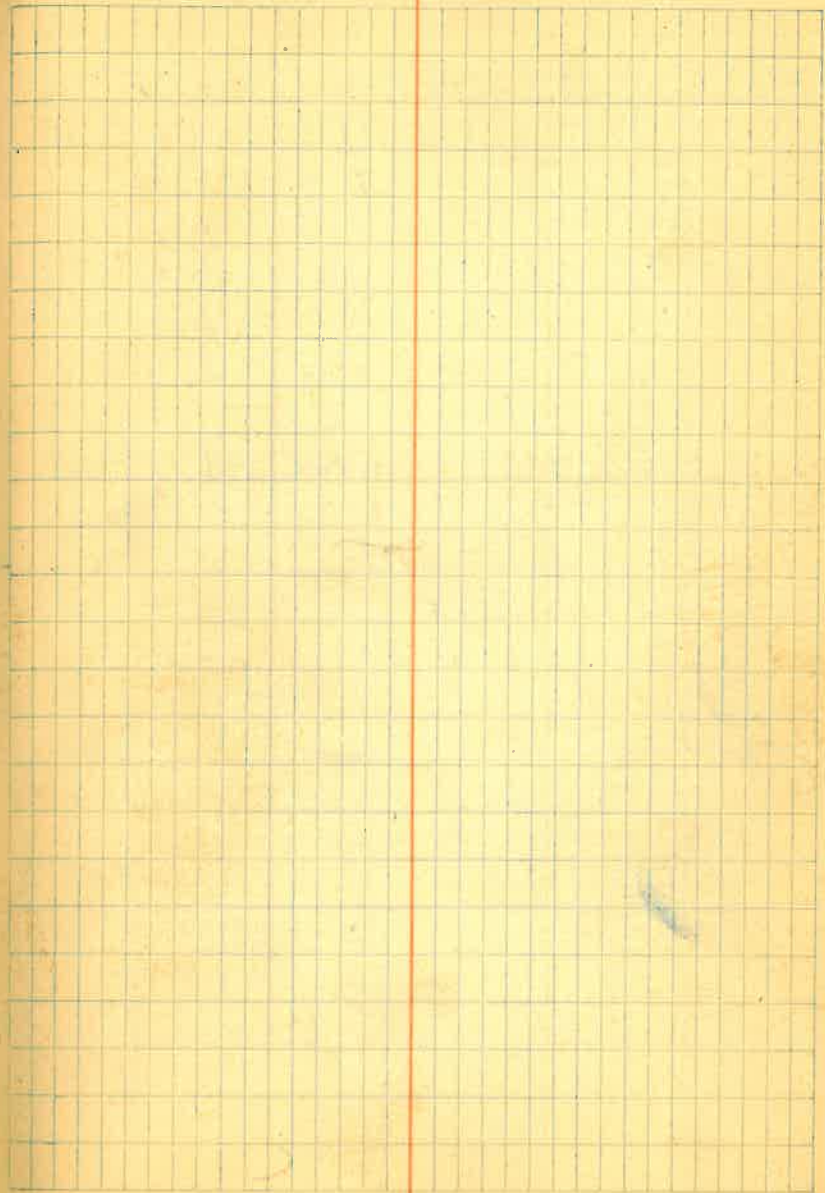
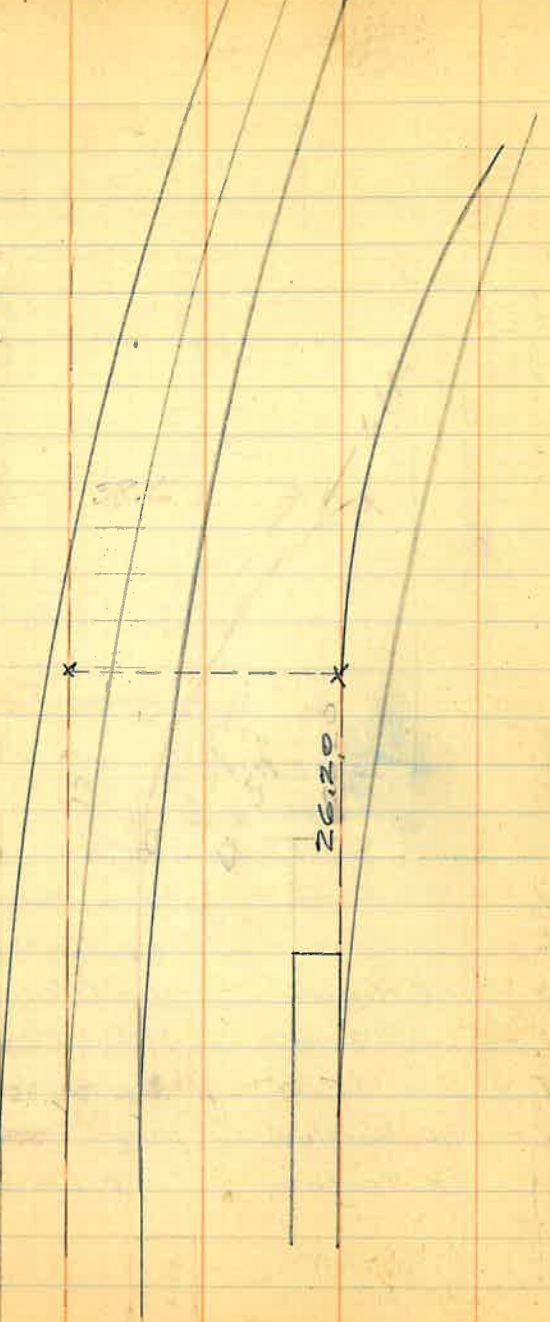
	56.25	56.25		
	111.1	7	6	111.1
	158.75	8	5	158.75
	58.55	9	4	58.55
	58.55	10	3	58.55
Devereux	98.75	11	2	111.1
	47.4	12	1	31.55
	108		117.	

ash st.

- 1 - D.S. Heron
- 2 - D.S. Heron
- 3 - S.P. Meyers
- 4 - Lucy Bayer
- 5 - John Harper
- 6 - G.D. Barclay
- 7 - C.C. Tredway  
W. 56.25  
E.T. Stewart  
E. 56.25
- 8 - Mary Castle.
- 9 - Mathew VanDer Hayden
- 10 - Arche Sanders.
- 11 - L.P. Lewis.
- 12 - Mrs. T.J. Long.  
parcel 12.5 x 17.35 in NE cor  
to L.P. Lewis.

3/4





## Drainage Problem along

BM	4.58	104.58		100.00
0.0			6.7	97.90
50			5.9	98.7
100			5.3	99.3
150			4.9	99.7
200			3.6	101.0
250			2.0	102.6
			6.75	97.83

## Sect St. (Tommy Long's front yard)

Con. concrete wall. Scott + Santee (Chadwick)  
corn of wall at surface

Bottom N. end of 2" concrete pipe (drain)

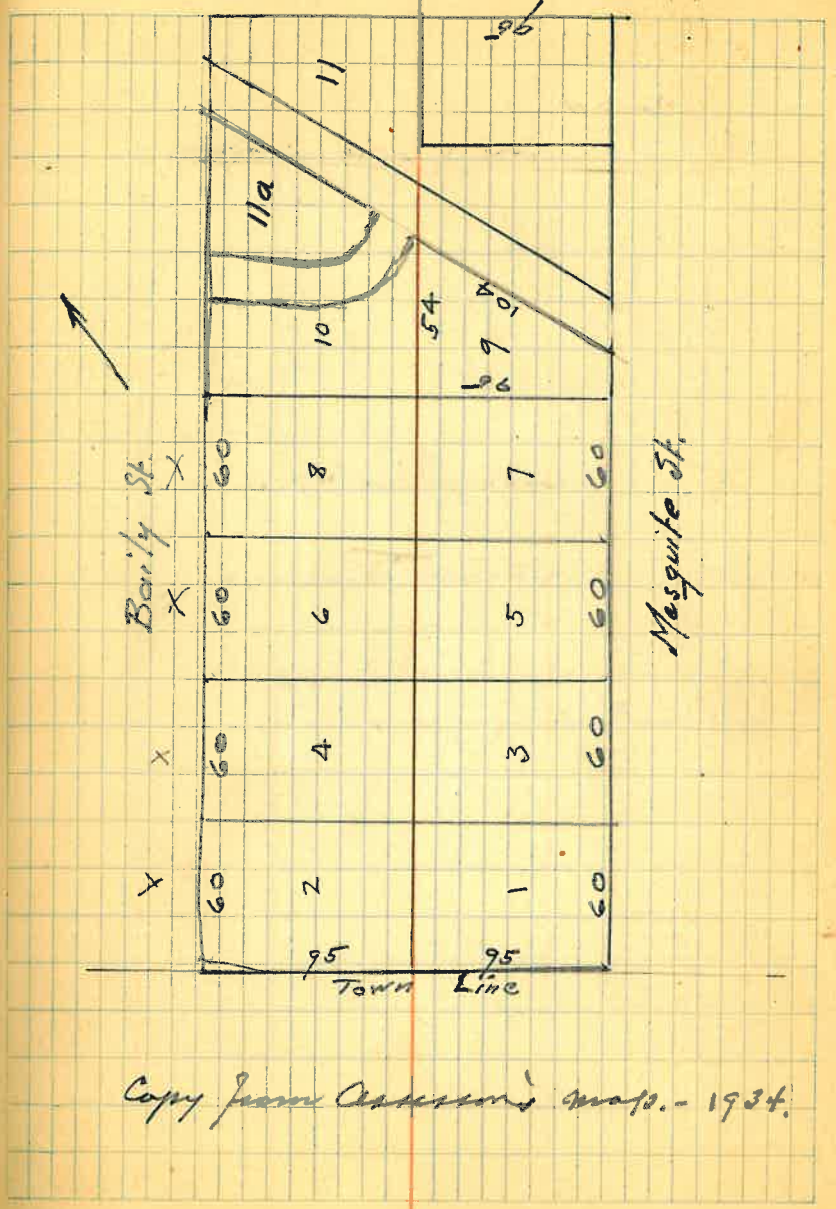


- Lot 1.- E. 20 ft. Richard & Winnie Davis  
W. 20 ft. " " "
- Lot 2. Geo. W. Murdock.
- Lot 3 Rich. & Winnie Davis.
- Lot 4 R. G. Newton.
- Lot 5 William Ellis
- Lot 6 John Hicks
- Lot 7 A.C. Hachtel
- Lot 8  $\frac{1}{2}$  Bridget Harry  
 $\frac{1}{2}$  John W. Harry.
- Lot 9  $\frac{25}{316}$  Rich & Winnie Davis
- Lot 10  $\frac{33}{117}$  Margaret Danielson
- Lot 11A  $\frac{4}{381}$  F.W. Sanders
- Lot 11 Teula Bierlocks.

Sec Book Cube N: 15 - p. 97

C.R. Rogers in 1924 - 27-204

75 1011' M



Copy from Assessor's maps. - 1934.

272.38 ✓

 $8^{\circ}10\frac{1}{2}'$ 

.98984

272.38

791872

296952

197968

492888

197968

2696126192

\* Tie Dist. - Stewart's pt.

in Willow to N.pt. Baseline, Broad,

 $\frac{137^{\circ}20\frac{1}{2}'}{274^{\circ}41'}$  angle Mess. to N.pt.

40°49' angle S. Baseline pt. (Stewart pt to N.pt. Baseline.)

Willow

N 89° 25' 23" E

Pine

N 89° 15' 25" E

347.010

0.89



Louis Trajanovich's property,  
cor. Silver and N. Broad as  
by alteration from original.

Aug. 24 - 1925.

Copy of description.

Req. at an iron pin driven in the  
ground which pt. now is the  
south east cor. of the Trajanovich  
property from which survey pt.  
in Broad Street opposite and  
easterly of east line lot 8 - Bl. 90,  
bears  $S. 83^{\circ} 12' E.$  - 380.9 ft. and  
the north east cor. of the top of  
a concrete wall bears  $S. 28^{\circ} 16' E.$   
21.85 ft. - extending thence  $S. 72^{\circ} 26' W.$   
to westerly boundary of E. T. side  
and

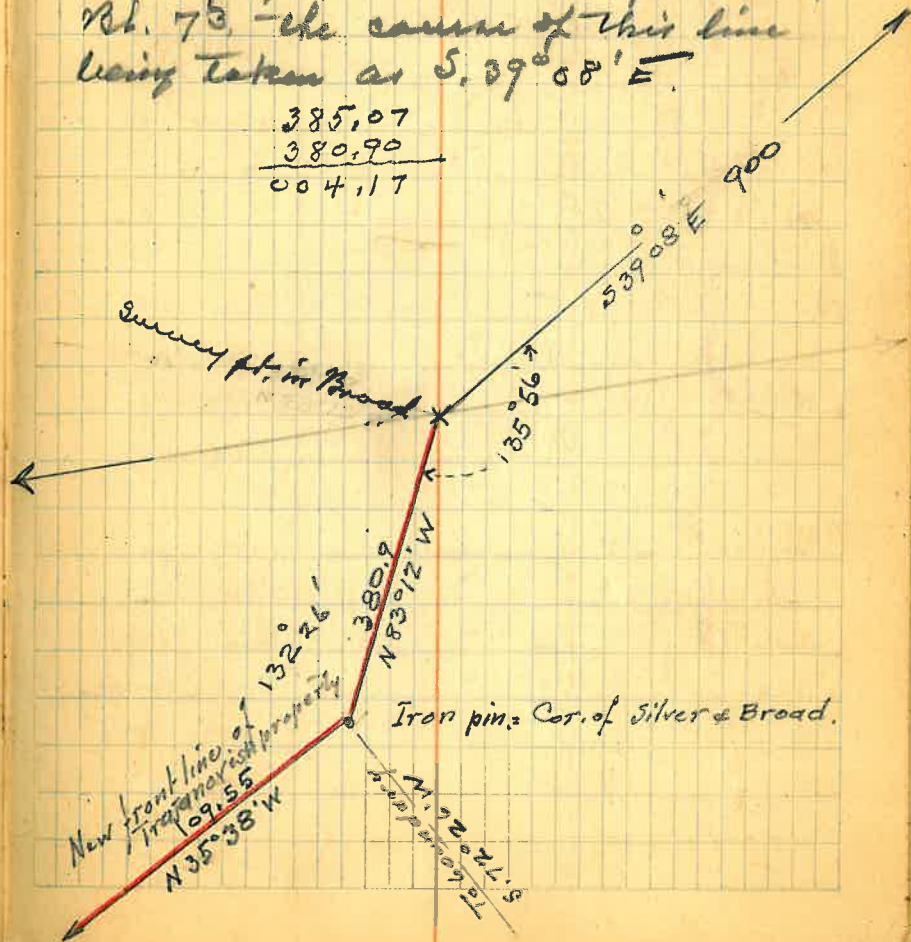
Req. at new south east cor. (iron pin)  
extending  $N. 35^{\circ} 38' W.$  109.55 ft. or  
less, to the north boundary of  
property owned by Louis Trajanovich

135.54  
271.52

260.17  
124.90  
385.07

The courses used for the foregoing  
descriptions were deflected from transit  
line shown on map. 900 ft. along  
Broad St. from a pt. easterly of the  
east line of lot 8, Bl. 90 to a point  
westerly of the west line of lot 33,  
Bl. 73, - the course of this line  
being taken as  $S. 39^{\circ} 08' E.$

385.07  
380.90  
-----  
004.17







	9.55	109.55	100.
			11.87 97.68
			9.55 100.00
			3.40 106.15
pt. 85			6.9 102.7
80			6.1 103.5
75			6.1 103.5
71			5.7 103.8
175 on E			4.0 105.5
150			4.3 105.3
125			4.5 105.0
100			4.2 105.3
75			4.1 105.5
50			4.1 105.5
25			4.1 105.5
0			3.9 105.6
pt. 130 - N.E. cor.			1.9 107.6
70			3.0 106.6
88			2.8 106.7
40			3.1 106.5
30			2.6 107.0
	8.52	115.62	2.45 107.10
			2.17 113.45

Top. Con pilastic railing - east end of wall

P. 6<sup>th</sup>

E. line. 6<sup>th</sup>

E of alley intersects E of Ash.

Footing along N. line of Ash  
= pavement.

E of Ash and 7<sup>th</sup>

	11.80	118.90		107.10
A			4.7	114.2
B			5.7	113.2
	11.22	128.75	1.37	117.53
C			6.6	122.1
D			3.0	125.7
E			0.4	128.3
F			1.3	127.4
G			5.1	123.6
H			7.1	121.6
I			7.0	121.7
J			2.9	125.8
K			+ 0.5	129.2
	11.92	119.02		107.10
A			4.90	114.10
	9.75	128.24	0.53	118.49
1			7.0	121.2
2			6.1	122.2
3			3.7	124.5
4			1.9	126.3
5			00	128.3
	10.75	117.85		107.10
X			4.4	113.4



31	
27.8	
24.8	53.6
24.6	
108.2	

5.9 x 11.3				
2			33.33	
26				92.7v
00	+10.9	+10.5	00	159.26v
	10	16.7	23.	
23				179.8v
00	+10.2	+10.0	00	262.90v
	10	29	33	
25				281.2
00	+8.6	+8.7	00	344.56
	10	42.7	47	
27				395.3
00	+8.1	+8.9	+9.0	445.98
	10	37	54.3	59
18				301.3
00	+7.1	+8.3	00	457.85
	9.	60	68	
29				377.3
00	+4.0	+4.8	00	244.80
	8.0	57.6	62	
22	wedge			99.7
00		00		1727.3 Cu yds

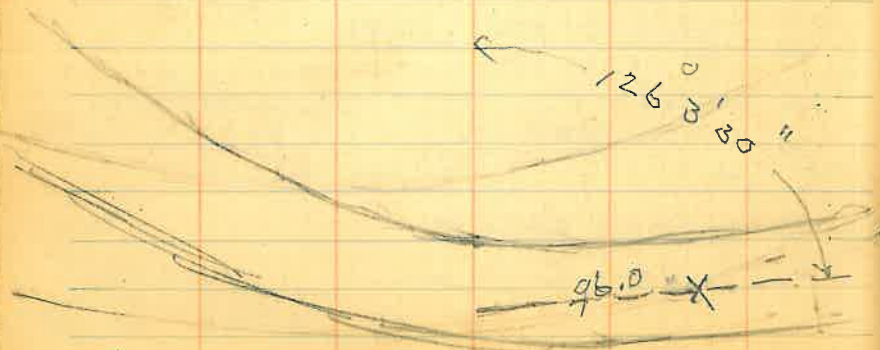
area 5000 sq. ft 1/2 ft cut  
= 3000 Cu ft.

111.0
1838 Cu yds.



Survey of parcel of ground  
for proposed building site in  
Lots 3 & 4 (W $\frac{1}{2}$  of SW $\frac{1}{4}$ ) Sec. 34, T1N, R15E

Spiked sec. line by  $\frac{1}{4}$  cor. near  
Standard Oil and Sec. cor. Stone  
on Township line. —



126° 3'  
25' 7

Meas. from  $\frac{1}{4}$  cor. S. along Sec. line.

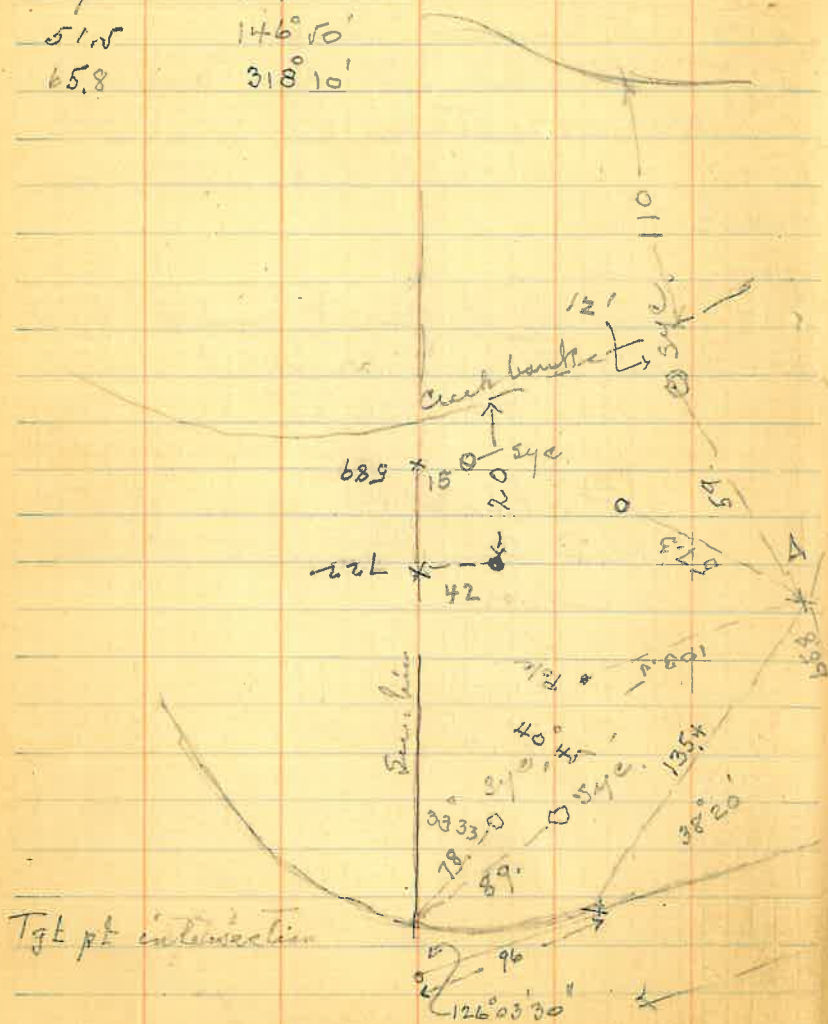
293. fence corner  
452 E. bank of wash  
559 W " " "  
566.6 - 2x2 stakes  
644.1 " " "  
740.2 " " "  
797.2 " " "  
847 nail  $\frac{1}{4}$  of County road head  
852.7 nail, P.I. with Tangent to south  
angle S to E. 126° 3' $\frac{1}{2}$ '

Center line of Road on Curve  
Deflect from Tangent to North

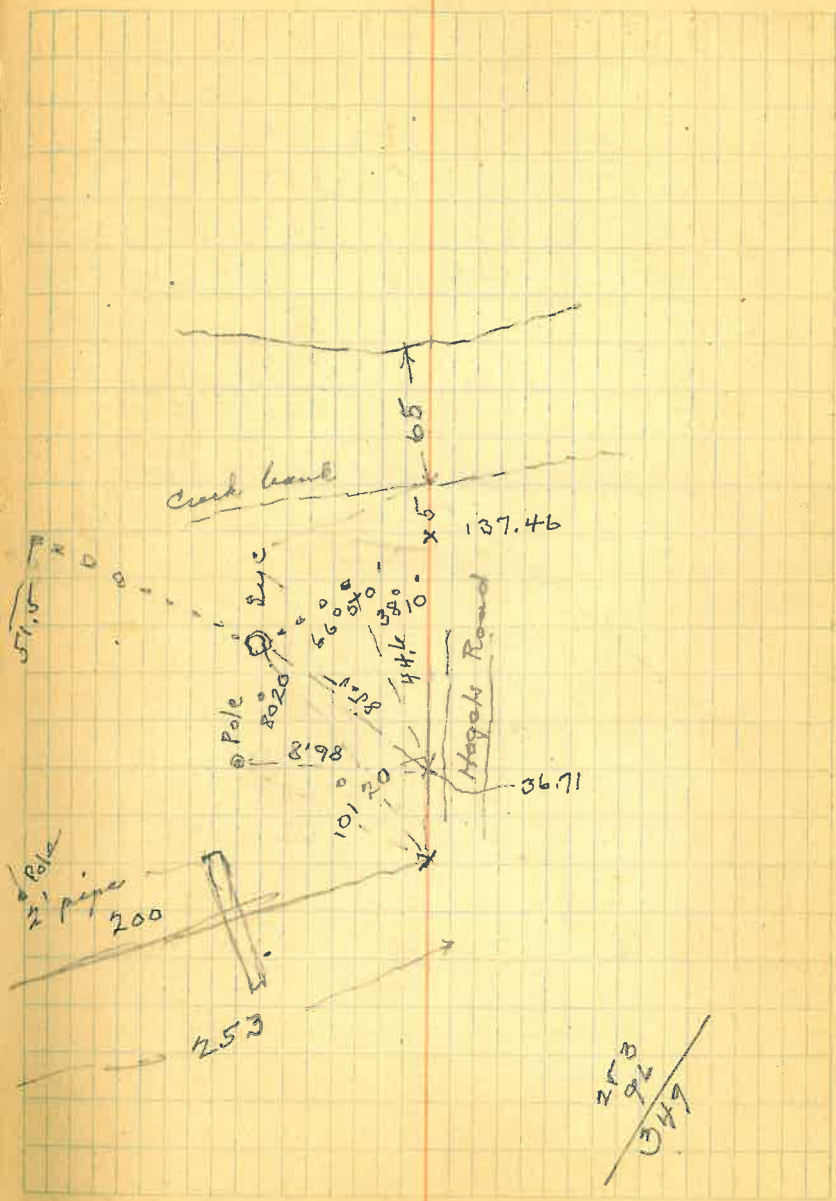
0 - end of curve  
50 B 0° 42'  
100 2° 40'  
150 4° 10'  
200 5° 25'

PE A

103.5	R	37°40'
57.3		84°40'
59		127°50'
51.5		146°50'
65.8		318°10'

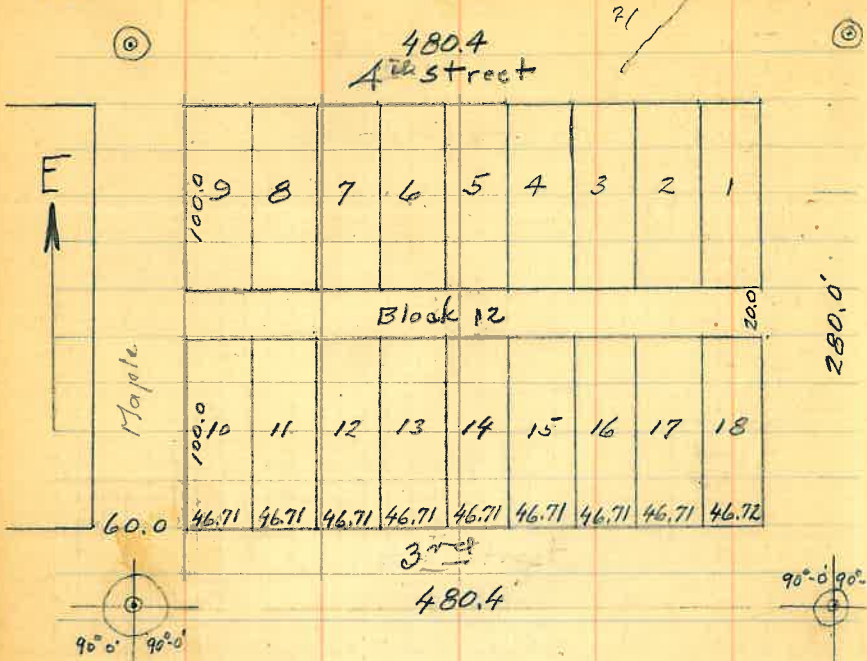


242  
722



253  
92  
347





$\frac{100}{1.36} = 99.96 \text{ ft.}$   
 $+ 87.59$   
 $157.55$   
 $140.01$   
 $17.54$   


---

 $261.104$   
 $19.67$   
 $280.71$   


---

 $100$   
 $4.22$   


---

 $99.71$   


---

 $100$   
 $4.50$   


---

 $380.42$   
 $- 99.64$   


---

 $480.06$   
 $60$   


---

 $420.06$

$\frac{46.71}{9}$   
 $- 420.39$   


---

 $420.06 - 46.67 +$   
 $9$   


---

 $0.33 \text{ short}$

9 - 46.67 ✓  
 8 - 93.34 ✓  
~~46.67~~  
 7 - 140.01 ✓  
~~46.67~~  
 6 - 186.68 ✓  
~~46.67~~  
 5 - 233.35 ✓  
~~46.68~~  
 4 - 280.03 ✓  
~~46.67~~  
 3 - 326.70 ✓  
~~46.68~~  
 2 - 373.38 ✓  
~~46.68~~  
 1 - 420.06 ✓

$187.55$   
 $140.01$   


---

 $47.54$   
  
 $46.67$  line of fence  
 $93.34$  abt lot line  
 $140$  fence pt.













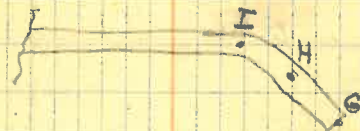
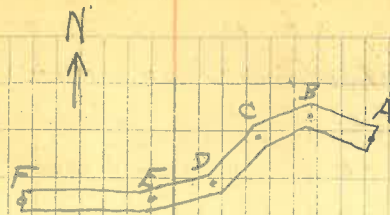


5/13/38

Location of wall on S. Side  
McC Miller Wash.

Transit at 16' offset point N. end  
Anderson St.  
B.S. West. along offset line

Pt.	L	Dist.
A	171-45	91.0
B	169-10	83.5
C	171-20	62.0
D	174-40	50.0
E	179-20	33.4
F	162-00	8.3
G	345-15	20.6
H.	1-20	24.3
I.	8-05	29.2
Cor. of Fence	335-40	35.6
" " "	314-50	40.1





117

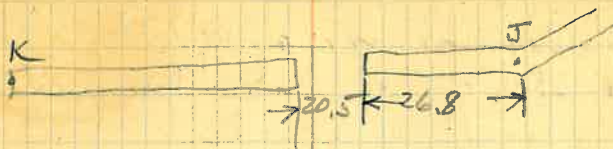
5/13/38

Transit at 16' offset pt. at  
N. end Highline Drive.  
B.S. East along offset line.

Pt.	L	Dist
J	342-30	69.1
K	206-30	131.6

---

118



Jan 15-39 -

Hyman Woods' property in  
Block 57 of Globe Township,  
for Fred Rabogliatti.

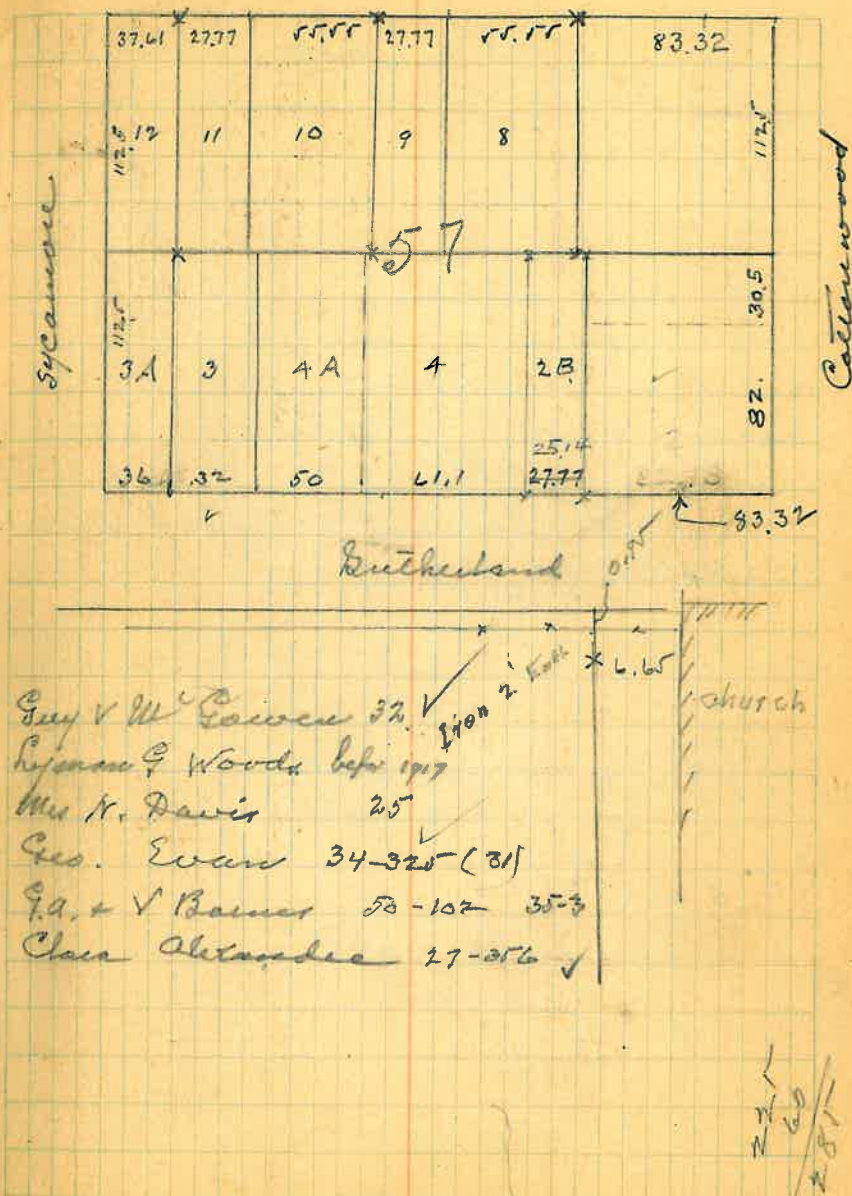
Record distances between street centers

Cotton to Bye, N22°17'45" W. 349.56  
Rutherford to Devereux 285.00

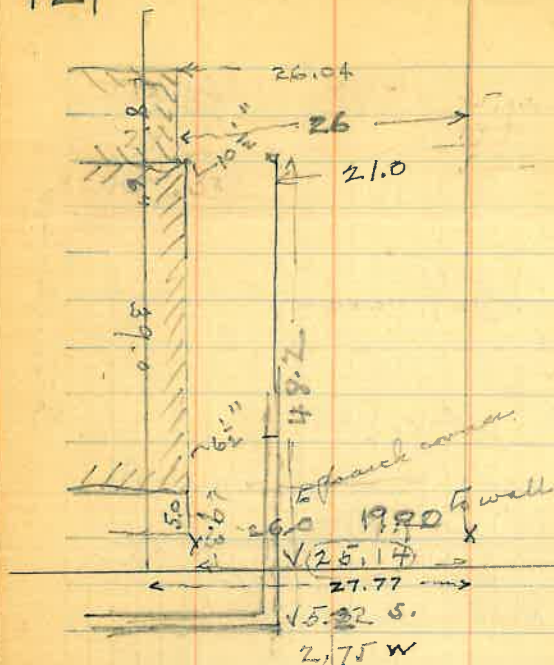
Devereux St.

From  $\Phi$  Cotton meas. to  $\Phi$  Devereux

86.48	85.57	24.	85.51
8°34'		83.32	66.03
66.93		107.32 x	151.54
9°26'	66.03	55.55	42.19
		162.87	193.73
		27.77	54.17
43.62		190.64 x	247.90
14°12'	42.19	55.55	68.07
		246.19	315.97
		27.77	33.71
56.0		273.96	349.68
14°41'	54.17	37.61	
68.97	68.07	311.57	
9°15'		38	
+ 33.71	33.71	349.57	
	349.68		







$$\begin{array}{r} 27.77 \\ 26.04 \\ \hline 1.73 = 1.9 \frac{3}{4} \end{array}$$

$$\begin{array}{r} 83.33 \\ 25.14 \\ \hline 108.47 \\ 29.3 \\ \hline 137.77 \\ 108.47 \\ \hline 29.3 \\ \hline 164.97 \\ 1.38 \\ \hline 166.35 \end{array}$$

$$\begin{array}{r} 325.8 \\ 24 \\ \hline 349.8 \end{array}$$

27.77

21.

fence 6.77 = 6.97"

27.77

25.14

W House 2.63 - .54 = 2.09 south 2'-1 1/2"

E " .87 = 1.76 south 1'-9"

5.22

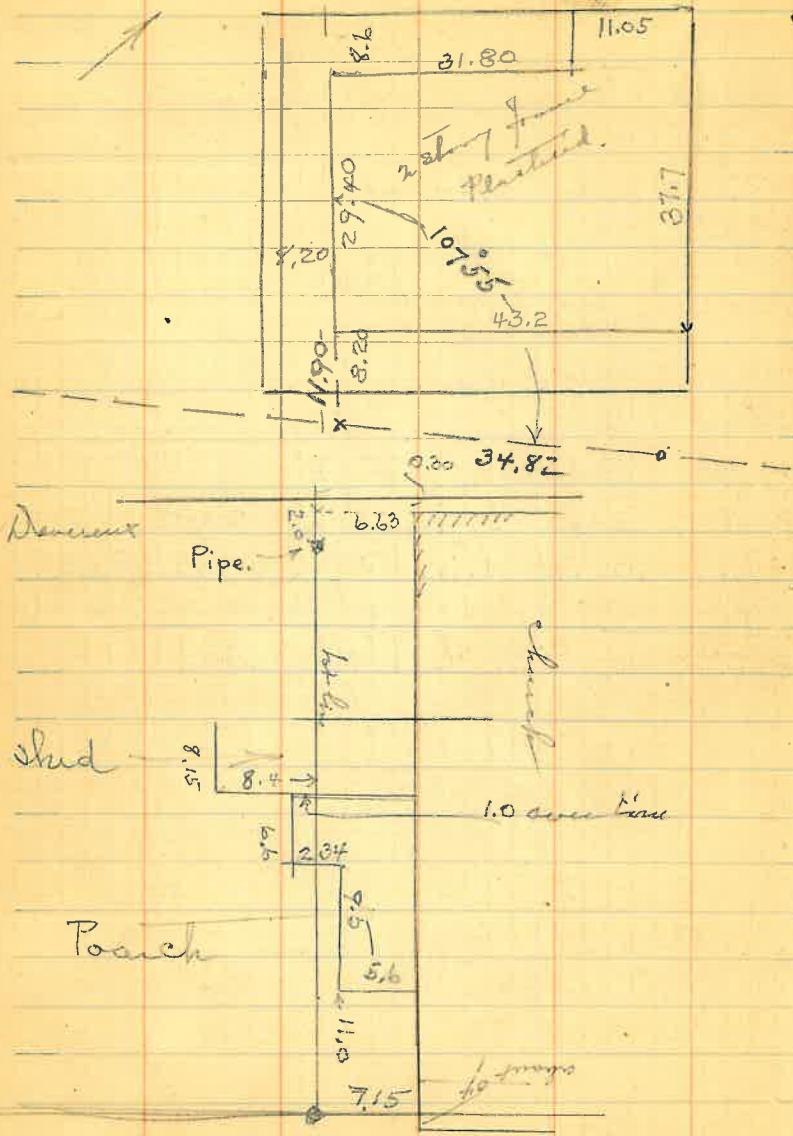
2.63

Wall: 7.85 - south 7'-10 1/4"

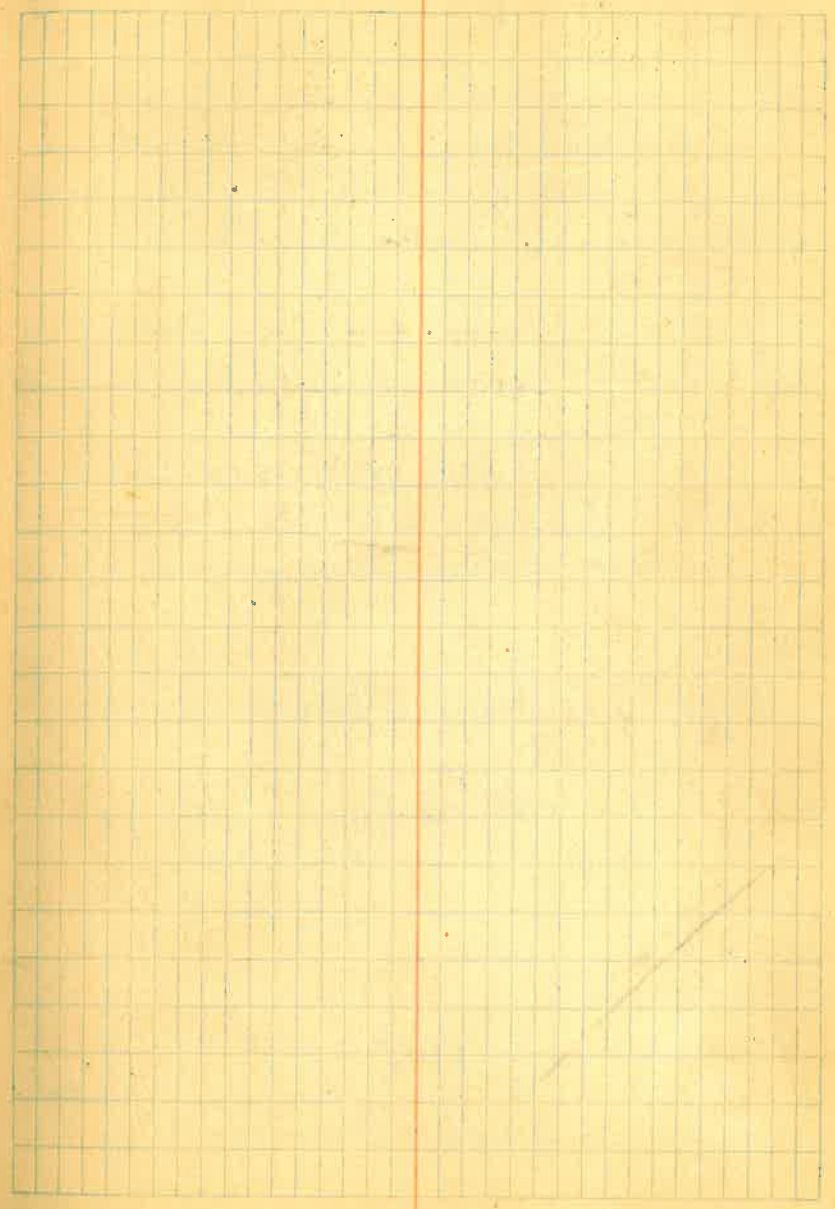
Dutchland street  
from Cotton wood near N. 4y

83.33 - set 2x2 stake  
19.92  
103.25 - cor. concrete wall  
108.47 leave mark V on wall for lot line  
137.74 cor. of concrete wall and Iron set  
167.92 Division in fence corner.  
213.6 fence line to E  
290.6 edge of walk at Syc.  
287.6 South line of Sycamore  
+ 38'  
325.6 Center line of Syc.

*Diameter*



35.26  
 0.44  
 34.82





May 22 - Ben Deering

Survey for Arizona Edison -  
Pipe line loc<sup>n</sup> along Monroe  
Street over Barrett Keegan and  
extension to Dixie Oil Co.

Extend pipe line on Monroe  
to N.E. from end of pipe in ground.

Intersect. E. line of <sup>Barrett Keegan</sup> B.K. add<sup>n</sup> at  
163.7. being 41.7 N. from  
S. line of Monroe measured on  
Sec line.

Δ Sec. line South to pipe line W. = 6830

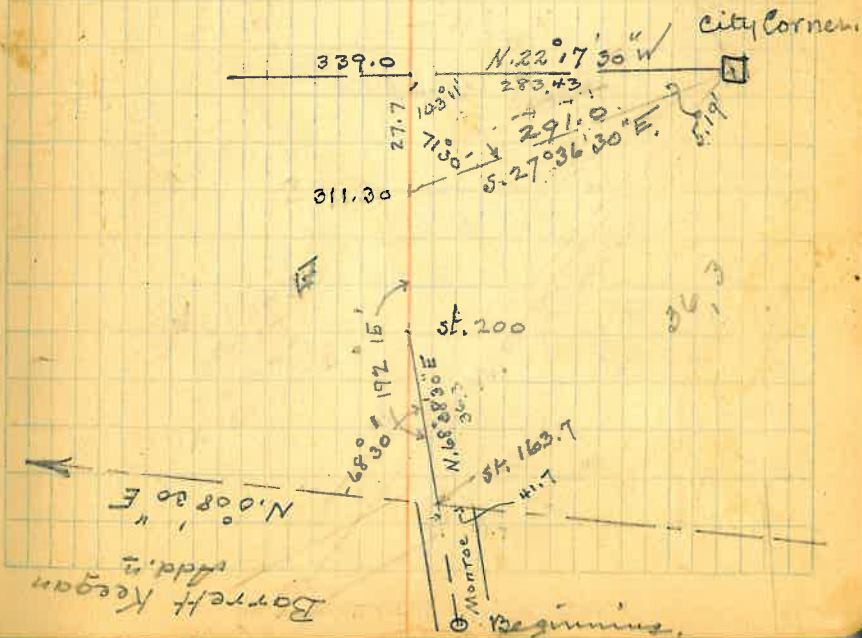
- 200. - Turn 192° 15' R.
  - 311.3. pt. F.E. Lindsey.
  - 778.0 pt.
  - 962.5 pt.
  - 1159.5 pt.
  - 1280.9 Δ pt. S. end of 3' pipe.
- R. 130° 01' through c. of pipe.  
N. 30° 54' 30" E

311.3  
467. - 469.5  
778. -  
184.5 - 181.  
962.5  
1971  
1159.5  
121.4  
1280.9

1977  
4.15  
111.30  
27.7  
311.3 139.0  
382.5  
- 6938  
382.5  
87  
470

N. 80° 53' 30" E.

F.E. Lindsey -



1280.90  
 19.50  
 1300.40 S. end of 3 ft pipe.  
 1397.5 N " " " "  
 1399.9  $\Delta$  pt. at N. end of pipe. -  
 L.  $117^{\circ}35'$   $134^{\circ}30'$   
 S.  $86^{\circ}40'30''$  E ✓  
 1608.9  $\Delta$  pt.  
 L.  $139^{\circ}22'$  " "  
 S.  $46^{\circ}02'30''$  E  
 1582.0 Fence + alt. line of mining claims  
 1683.9  $\Delta$  pt.  
 R.  $184^{\circ}34'30''$   
 S.  $41^{\circ}28'$  E.  
 1758.0  $\Delta$  pt.  
 R. 175.28  
 S.  $46^{\circ}00'$  E  
 1811.1 Pt.  
 1951.9 Pt.  
 2097.5  $\Delta$  Pt.  
 157° 14' R  
 S.  $68^{\circ}48'$  E

May 23 - 40.

1280.9

119.

1399.7

109.

1508.9

175.

1683.9

74.1

1758.0 \*

53.1

1811.1

140.8

1951.9

145.6

2097.5

2097.5

1811.1

286.4

1509.4  
 Quarry Block. 73  
 #2778  
 Pt. 490130 1582  
 Franco - N. 25.  
 Italiano 1582  
 46° 04'



87° 40'  
 21.

Return



2260.1 Δ Pt  
 L 157° 04'  
 5.45' 52" E

2359.1 Pt.

2450.2

2495.3 Pt. End

M<sup>c</sup>-Nell's Land description,  
 in SE-SW, 27 - 1N 10 1/2° E

By approx. 650 - SE of bridge -  
 and at a pt 572.67 ft. W. and 144.0  
 ft. N. of the S.E. cor of SE 1/4 of SW 1/4  
 of 27. -

Thence N 33° 48' E 400

" N 56° 12' W 150

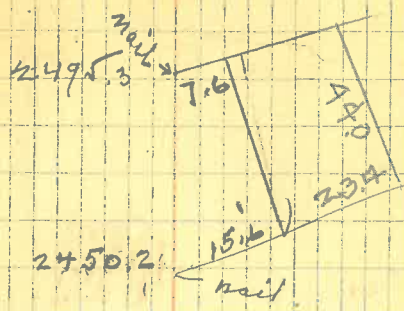
" S. 33° 48' W 400

" S. 56° 12' E 150

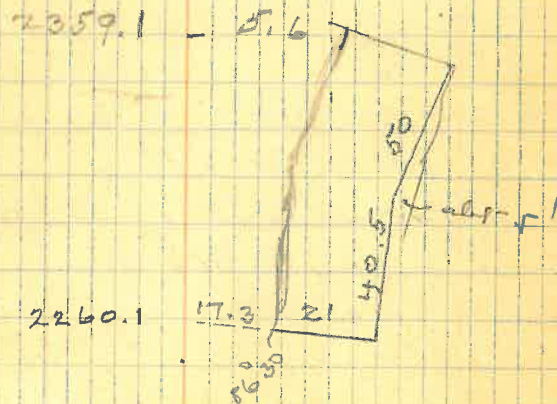
1.377 @ v.

5/2-552

2097.5  
 162.6  
 2260.1  
 99.  
 2359.1  
 91.3  
 2450.4  
 144.6  
 2495.3

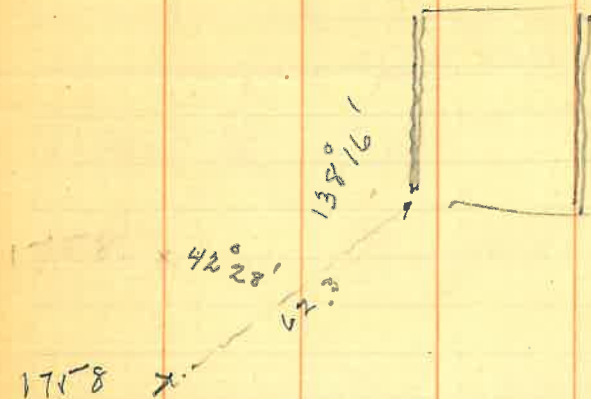


162



2147.8



2097.5 x low<sup>2</sup> bridge

17158 x

John Corn & Jennie Corn  
1/2 McNeill Oil & Refining Co.

Land in SE 1/4 SW 1/4 - 27-1N-R 15 1/2 E

Req. approval w/c S.E. of bridge at a pt. 572.67 W.

144 N. of SE cor SE 1/4 SW 1/4 27.

thence N. 33° 48' E 400 -

" N 56° 12' W. 150

" S. 33° 48' W 400

" S 56° 12' E 150 = 1.077 @ A.

excepting for Helen H Killip for Mineral rights.



## South &amp; Fegan.

South side & extended W <sup>m</sup> to + in curb	15.79
+ on same curb, alt. line of. North South St.	29.31
+ in South east curb.	18.26.-

## Fegan &amp; Carico

$\frac{1}{2}$ " spike - + on retaining wall, extension south<sup>th</sup>  
of Fegan St. - 50.67

Cor. concrete garage - North on Fegan

37° 14' to R. - 38.67 and

2032 to Jan of Cor, wall to east.

Apr. 19 - 41

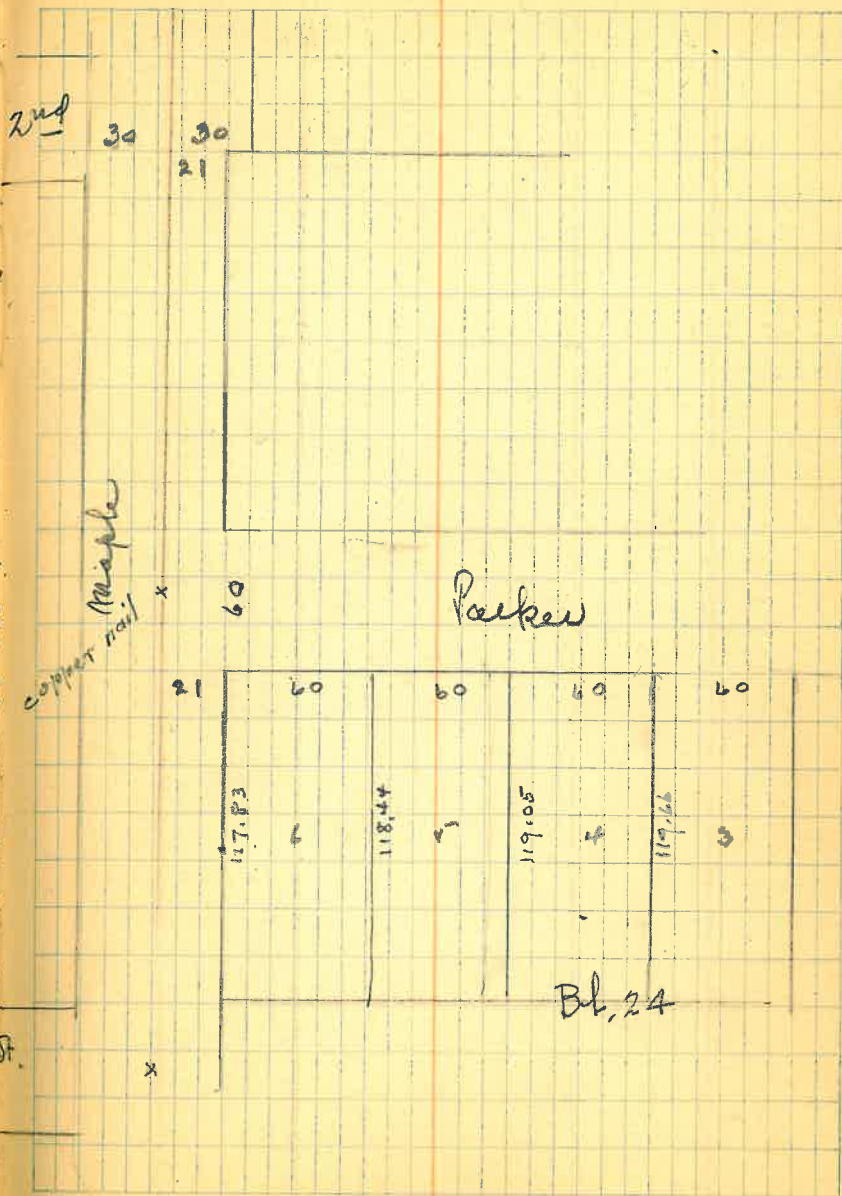
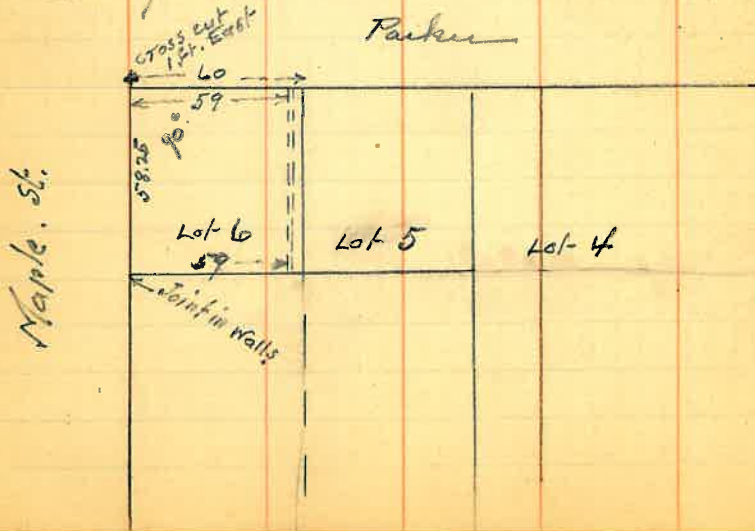
Loc<sup>n</sup> = S.W. cor. Parker & Maple.

Find Centerpoints Maple + Parker,  
Maple + 1<sup>st</sup> St.

Set over - E. Maple + Parker from  
of 1<sup>st</sup> turn L. 90° -  
Meas. 21 ft. to S. line of E-Maple

Turn 90 from Parker -  
meas. 30. - comes in 4x4 post  
cut cross at distance 29. ft.

Meas. 59 ft. along Parker St. to East  
end of cross wall west across lot.





147

Harris has the E 50 ft Lot A.  
J.S.W. - W. 50 ft

Bl. 28  
James has W. 80 ft. of lot A. =  
Mr McCormick E 45.

Bl. 33  
Baptist Church - E. 54 } Lot 1  
C.A. Baumgardner W. 81.

Mrs Shute. 90 ft. Lot 14

148

Block 3 - East Globe  
lots 17 & 18 - W.R. Turner

Block 28 - Globe T.S.  
Lot 1. - part. Mrs & Mr Joe S. Wilson  
part. W.O. Harris Jr.

Lot 14. part. Mrs. Francis McCormick  
part. R.C. Jones.

Block 33. Globe T.S.  
Lot 1. - part. 5<sup>th</sup> Baptist Church  
part. Lyman C. Woods.

Lot 14. - Mrs. Geo. Shute.

June 26 - 1930

149

To wide street at sharp turn.

June 15 - 30

Jack Kinney

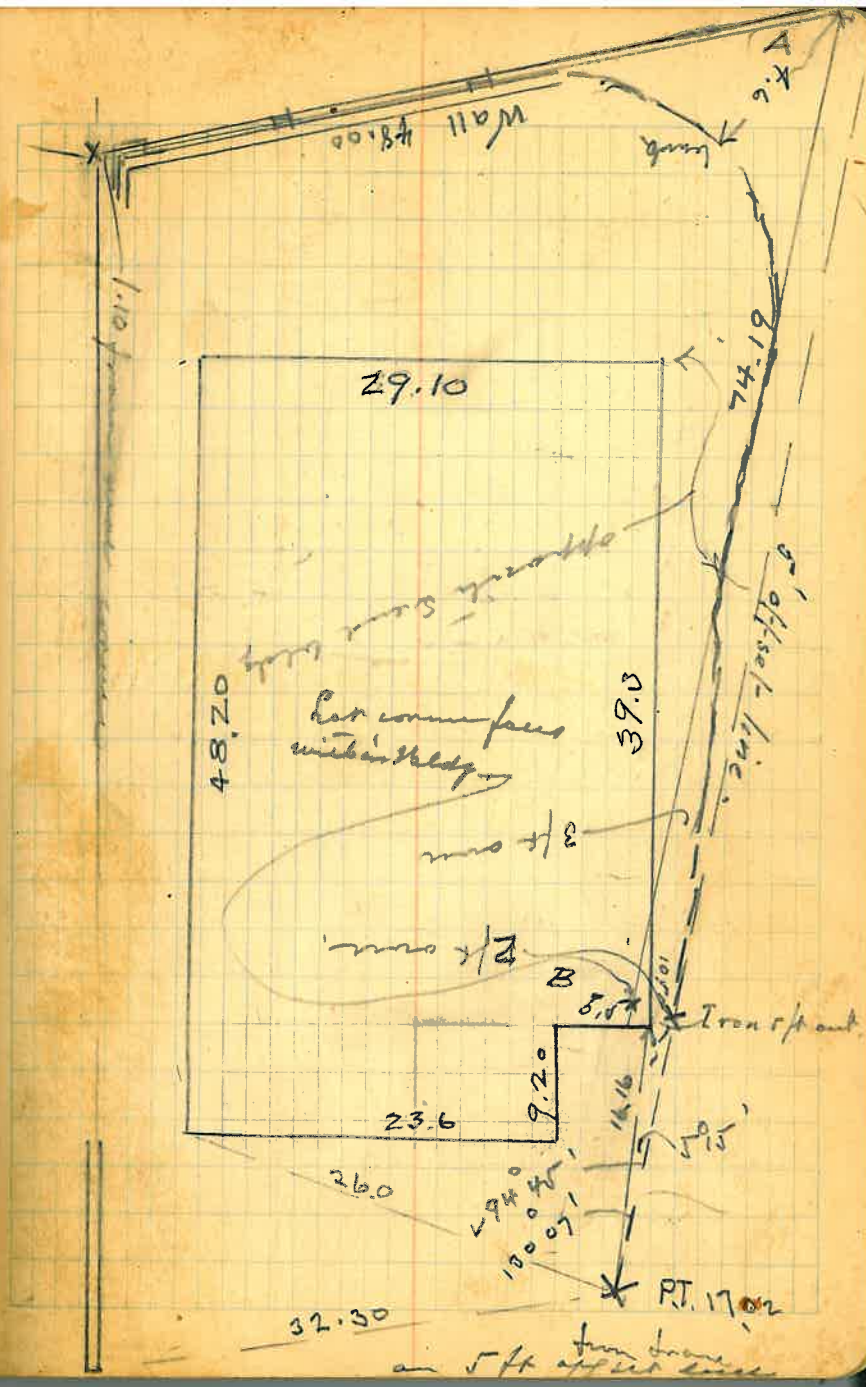
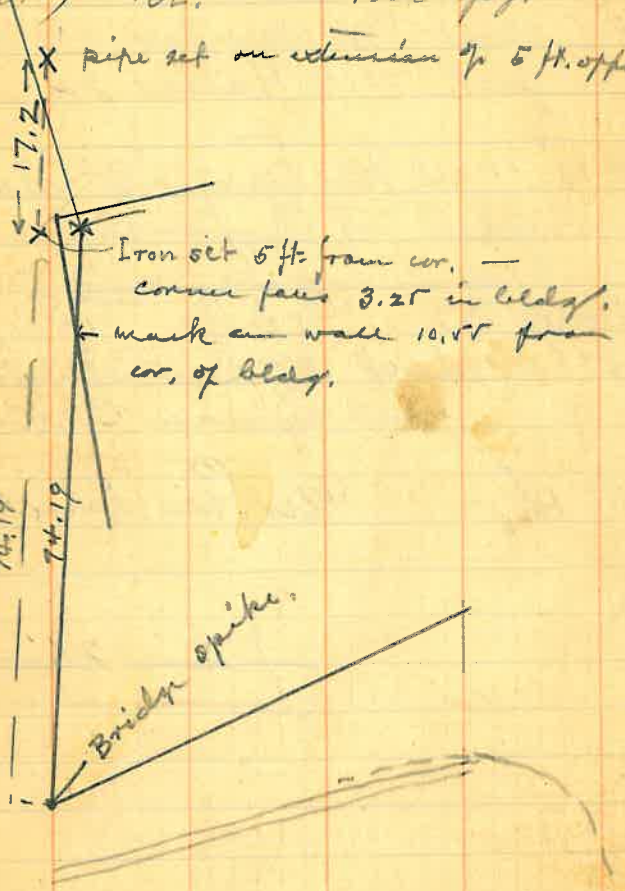
Durway lot 92 (Formerly Kinney  
Lot) Bl. Red Spgs Adm.

X pipe set on extension of 5 ft. offset line.

\* Iron set 5 ft. from cor. —  
corner piece 3.25 in bldg.  
← mark on wall 10.55 from  
cor. of bldg.

74.19  
74.19

Bridge spike.



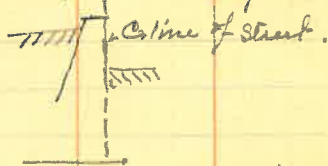


15) Copy of City notes.  
Street Centerline Intersections

## Cedar &amp; High.

Drill steel 6" below Surface.

Corner is on line of S. face of Cedar St.  
retaining wall, and 30 ft from end  
of wall



## Cedar &amp; East.

Steel bar in ground.

+ S. 17° 02' W. 45.74

+ on NE side of con. wall 12" above surface

N. 59° 00' W 48.07

S. face of wall, top of wall = C. line of Cedar

## Wesg. &amp; High.

pt. on man hole lid.

+ on walk N. 32° 48' E - 28.66

+ on S. face con. wall S. 72° 06' E 38.28

+ on N.E. sid. con. block wall S. 29.20 W 39.72

+ on M.H. rim S. 67° 42' W. 0.41

+ on M.H. rim N. 67° 42' E 0.83

## Wesg. &amp; East

Iron pipe in black pav. mt.

+ in N.E. side con. garage 10" above ground

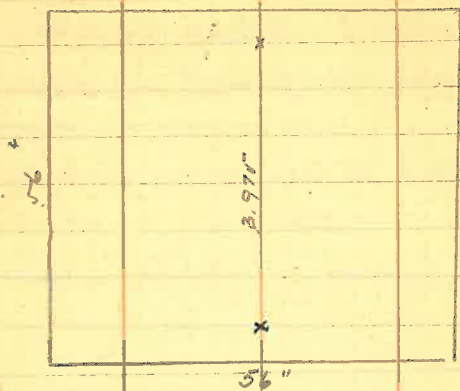
N. 71° 18' W - 47.69

+ on S.W. side con. wall - 4" above ground

N. 28° 19' E 39.03

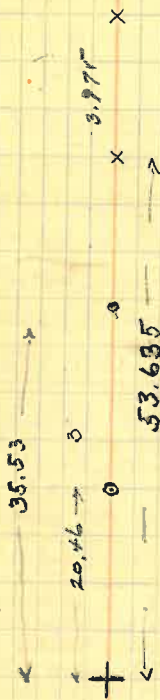
+ on M.H. rim N. 59.23' E 13.23

154



July 15 - 20

$$\begin{array}{r} 3.971 \\ 65 \\ \hline 4.625 = 4 \\ 53.635 \\ 5.975 \\ \hline 19.610 \end{array}$$



A wire

B wire



July 21 - 30

Light pole at S.E. cor. Mesa  
and High. 76 ft. S. to

fence across street; thence  
70 ft. distance to N. end of  
bridge. —

S	80	53	30	W
	130	01		
	210	54	30	
	180			
S	30	54	30	W
	117	35		
N	86	40	30	W
	139	22		
	226	02	30	
	180			
N	46	02	30	W
	184	34	30	
	138	32		
	179	60		
S	41	28		E