

LOBE SURVEY.

ENGINEERS'  
FIELD BOOK  
NO. 403 F

No. 15.

92

Apr 12-30

S.E. cor. Caico & Hill.

Nail in Bl. pavement

• - 12.05 - • Pipe set for Bl. cor.

• 10.11 •  
x stake and nail.

Retaining Wall - N. side of Ash St.  
betw. 3<sup>rd</sup> & 4<sup>th</sup>.

School District No. 1.

May 25 - 30

J.M. & R.W.

Stewart's Center points.

Ash & 3<sup>rd</sup>.

On Sewer manhole Cover.

- + on rim is S. 67° 42' W - 0.93
- + " " " N. 67° 42' E - 0.76.
- + on side-walk curb is N. 21° 49' E 29.18
- + " " " " S. 67° 39' E 32.88

Ash & 4<sup>th</sup>

Brass tube in concrete pavement.

- + on rim of manhole is S. 67° 42' W 5.23
- + sidewalk curb is N 27° 12' E. 31.06
- + " " " is S. 67° 30' E 33.65

Ash & 5<sup>th</sup>

Brass tube - 9" below surface

- + on walk <sup>curb</sup> is N. 78° 41' W 35.90
- + Top of Con. Wall N 24° 19' E. 43.39
- + on curb. S. 24° 14' W 40.58

$$220 \overline{) 27} \cdot 7 \text{ of } 27 = 189$$

$$216$$

$$8$$

$$14 \cdot 31 =$$

$$31$$

$$4$$

$$220 \checkmark$$

Spot and find & intersections  
Ash with 4<sup>th</sup> and Ash with 5<sup>th</sup>.  
Run a line parallel and 4 ft. S.  
of N. line Ash betw. 4<sup>th</sup> & 5<sup>th</sup>.

For grade I draw a straight line betw.  
side walk rights at block corner.



Surface Elevations in course

B.M.	6.81	106.81	100.00
0+00	8.83	97.98	✓
+ 31	7.64	99.17	✓
+ 58	6.65	100.16	✓
+ 85	5.63	101.18	✓
+ 112	4.61	102.20	
+ 139	3.61	103.20	
+ 166	2.57	104.24	
+ 193	1.55	105.26	
+ 220	0.54	106.27	

12  
 Lines with wall construction,

Top of F.H. at N.E. cor. 9th + 4<sup>th</sup> St. -

Hub at N.E. cor. 9th and 4<sup>th</sup>



Continuation surface elevations

- Stn 0+10 -

	12.62	Stn 0+00 97.78 110.60		97.98
00			4.2	106.40
6			5.2	105.40
13			6.4	104.20
20			10.0	100.60
24			11.9	98.70

	10.40	Stn +31 99.17 109.57		99.17
00			0.5	109.1
14			3.0	106.1
18			8.2	101.4
24			10.1	99.5

	8.00	Stn 58 100.16 108.16		100.16
00			3.0	111.2
14			0.4	107.8
19			5.5	102.9
24			7.8	100.4

Cross-section

97.98 (14)

13.28

111.26

99.17

12.20

111.37

Note - Measurements 5' from  
Jt. 20 ft. N. of ash st. N. line.  
Stn 0+00 = NE Cor Ash on 4th

	+13.38	111.36		97.98
00			4.9	106.5
6			6.0	105.4
16			8.1	103.3
18			10.2	101.2
24			12.7	98.7

	+12.20	111.37		99.17
00			2.1	109.3
15			4.6	106.8
19			9.6	101.8
24			11.9	99.7

	11.20	111.36		100.16
00			1.1	110.3
15			3.5	107.9
19			8.5	102.9
			14.0	100.4

Stn 85

	11.50	112.68		101.18
0.0			1.5	111.2
14			3.8	108.9
18			8.3	104.4
24			11.3	101.4

Stn - 112

	10.50	112.70		102.20
0			0.6	112.1
13			2.3	110.4
19			7.6	105.1
24			10.5	102.2

Stn - 139

	12.22	115.44		103.22
00			2.6	112.9
13			4.4	111.0
17			8.7	106.7
24			12.1	103.3

Stn 166

	11.20	115.44		104.24
00			2.1	113.3
12			3.4	112.0
19			8.2	107.2
24			10.9	104.4



St. 193

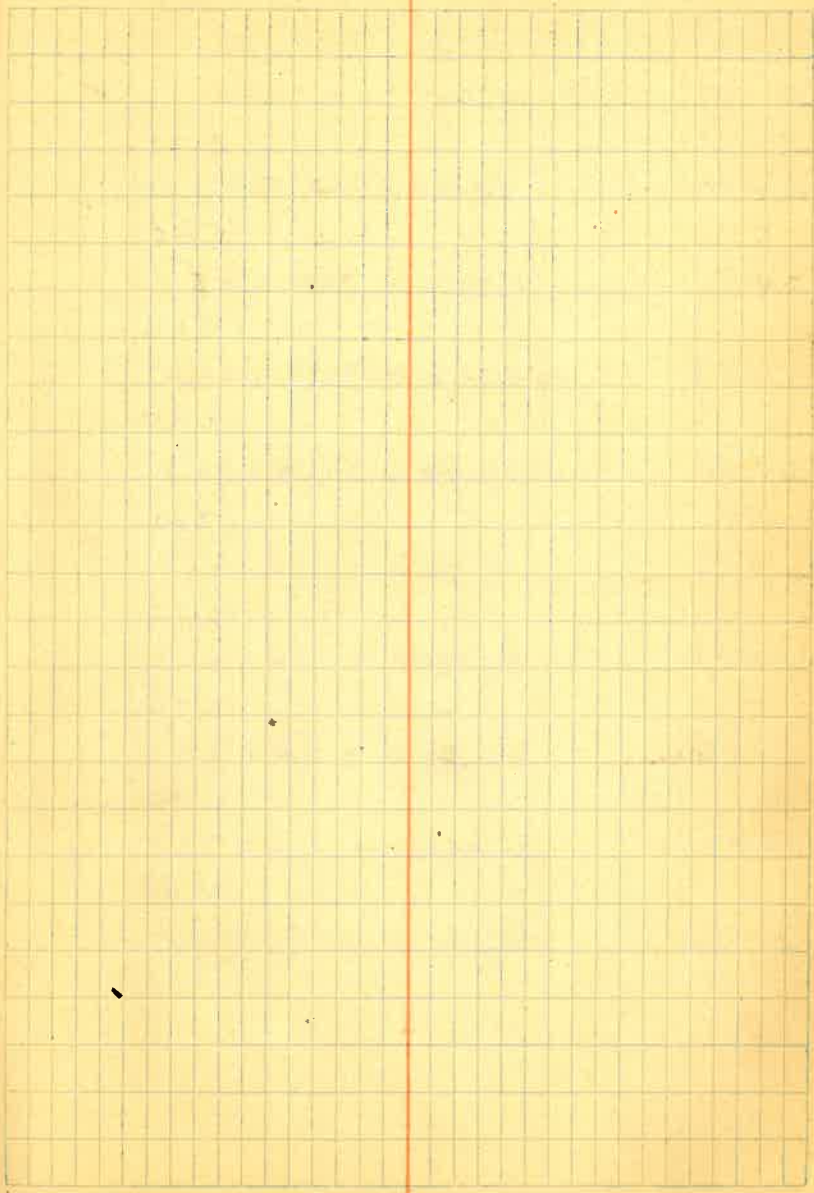
10.15	115.41		105.26 ✓
00		2.1	113.3
13		3.4	112.0
18		7.4	107.8
24		9.9	105.1

St. n-220

9.14	115.41		106.27 ✓
00		1.9	113.5
11		3.1	112.3
17		6.7	108.7
24		8.8	106.6

St. n 235

Area  $\frac{1}{2}$  of St. n 220





St. n -	Area.	Cu yds.
-0-10	00	3.22
0+00	17.40	18.60
0+31	19.80	18.65
0+58	17.50	17.45
0+85	17.40	17.40
1+12	17.40	16.50
1+39	15.60	16.20
1+66	16.80	15.90
1+93	15.00	14.40
2+20	13.8	

138.37

00 — 00 — 00

$$(1.5 \times 6) + 6 \text{ sq. ft.}$$

$$(2.3 \times 6) + 6 \text{ sq. ft.}$$

$$(1.6 \times 5) + (3.5 \times 1) + 6 \text{ sq. ft.}$$

$$(1.9 \times 6) + 6 \text{ sq. ft.}$$

$$(1.9 \times 6) + 6 \text{ sq. ft.}$$

$$(1.6 \times 6) + 6 \text{ sq. ft.}$$

$$(1.8 \times 6) + 6 \text{ sq. ft.}$$

$$(1.5 \times 6) + 6 \text{ sq. ft.}$$

$$(1.3 \times 6) + 6 \text{ sq. ft.}$$

21

00 2.5 below, 3' wide

6

30 - 2.5 " 3' wide

30

6 2.2 " 3' "

51 2.2 " 3' "

51 2.1 " 3' "

6

108 2.1 " 3' "

$$\begin{array}{r} 0.75 \\ 1.125 \\ \hline 1.875 \end{array}$$
3ft wide exc. <sup>27</sup>at 4<sup>th</sup> street5<sup>th</sup> street wall, founds

$$10.4 \times \frac{7+4}{2} \times 1.00 + 1 \times 3 \times 10.4 =$$

4<sup>th</sup> street wall

$$16.3 \times \frac{7+5.5}{2} \times 1.00 + 1 \times 3 \times 16.3 =$$



$$(1 \times 4) + (1 \times 3) = 7.00$$

5 x 3

$$\begin{array}{r} 0.75 \\ 3.5 \\ 1.0 \\ 7.5 \\ \hline 1.875 \\ 0.72 \\ \hline 3.68 \\ 3. \\ \hline 6.68 \end{array}$$


(1 x 3)

5 x 3



Final Quantities of Concrete in East -

St. n	in top wall calculations	Area foundation	Total	Quantity Cuyds
0+00	7.00	+ 3.0	10.0	
+31	7.00	+ 3.0	10.0	
+58	7.00	+ 3.0	10.0	
+85	7.00	+ 3.0	10.0	
1+12	7.00	+ 3.0	10.0	
1+39	7.00	+ 3.0	10.0	
1+66	7.00	+ 3.0	10.0	61.48
1+93	7.00	+ 3.6	10.60	10.60
		+ 4.5	11.50	
2+20	7.00	+ 4.5	11.50	11.50

- End walls -

5th St.

0+00	7.00	+ 4.50	11.50	
+10.4			7.00	3.56

4th St.

0+16.3	7.00	+ 3.0	10.00	
			8.00	5.43

Total Concrete Cuyds 92.54

92.54 Cuyds. at 15.65 = 1448.25  
 180.63 " at 1.25 = 225.79  
 Grand Total \$ 1674.04

Globe School wall - Paul Michaelson - Contractor

- Earth Excavation -

St. n	Area	
0+00	18.60	
+31	19.20	21.70
+58	19.20	19.20
+85	17.10	18.15
1+12	18.60	17.81
1+39	18.60	18.60
1+66	18.66	18.63
1+93	16.20	17.41
2+20	16.05	16.15

5th St.

+10.4	18.00	6.10
-------	-------	------

4th St.

+16.3	19.50	11.80
-------	-------	-------

Total Exc. = 165.63 Cuyds  
 add. 0.5 x 3.67 x 220 = 15.00  
 Total 180.63

Aug 28 - 30  
 PM



Survey Lot 8 in Bl. 90  
Globe Town Site.  
For Mattie Jacobson.

Tr. over angle pt in Street  
near Hankes Garden, right  
on pt. at N. end Broad St.  
bridge. Turn to R.  $11^{\circ}06'$   
meas. 84.0 ft. and set

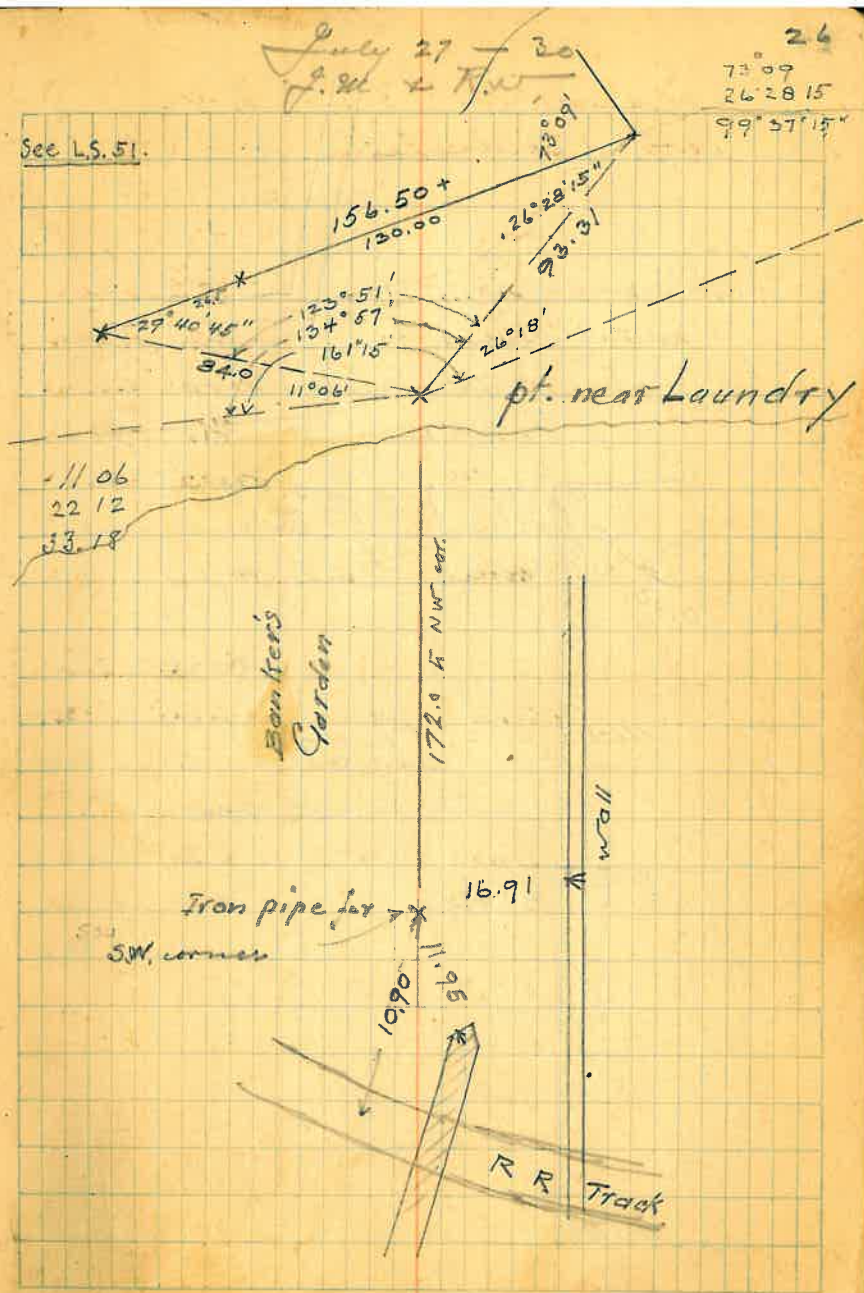
Construct Triangle - p. 26. -

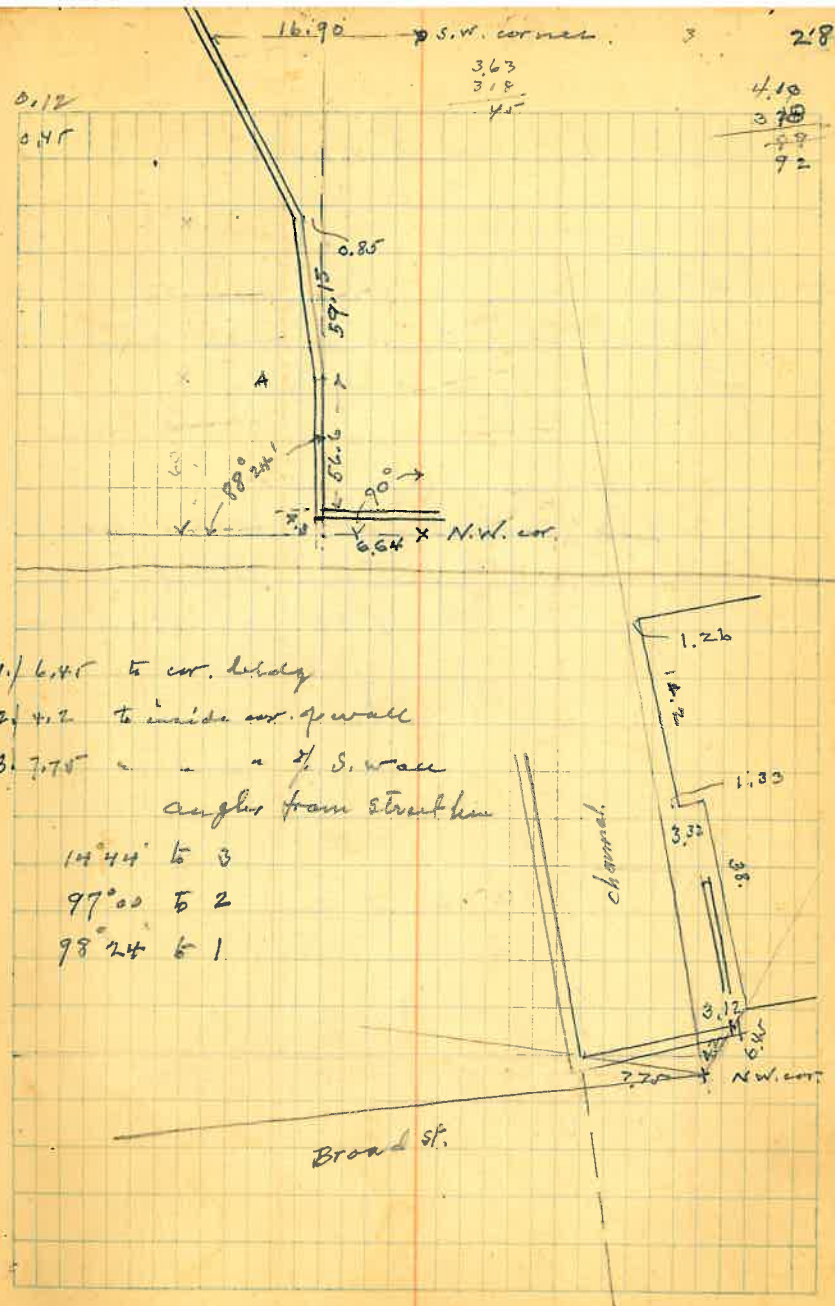
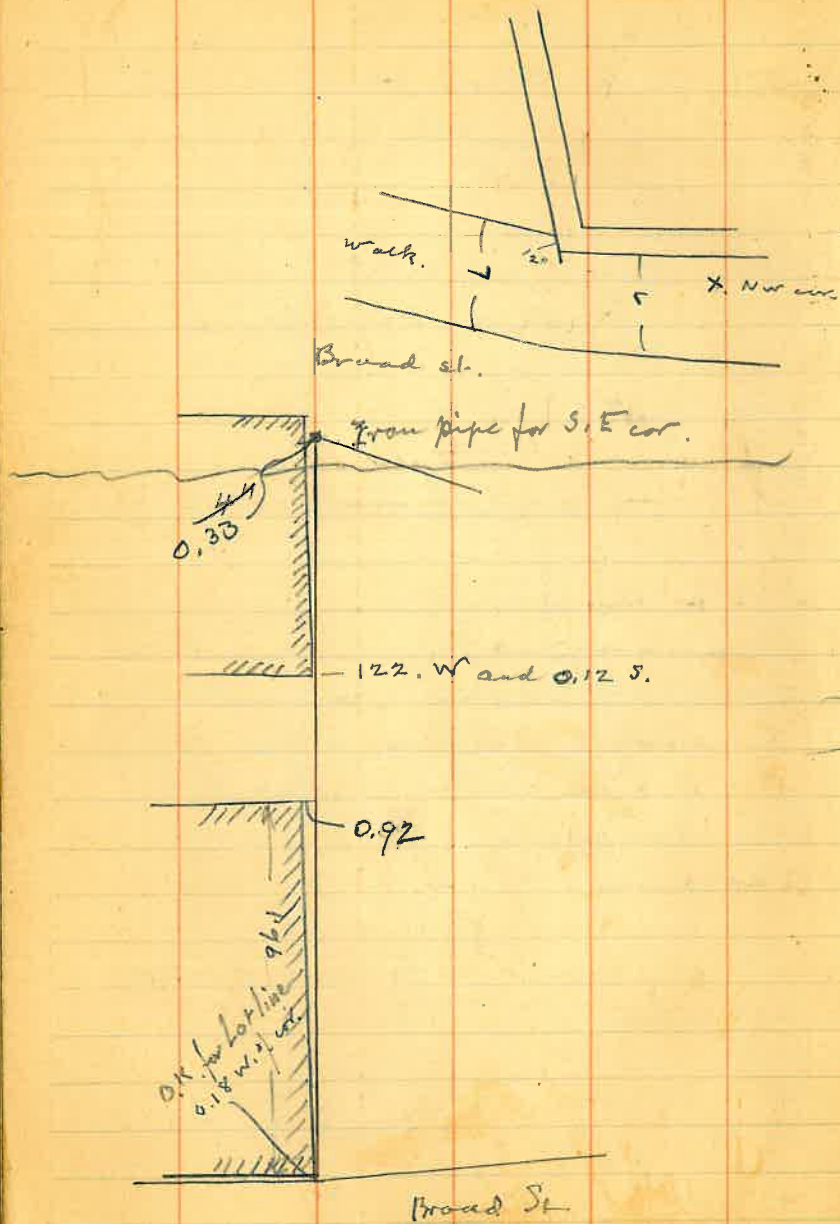
Tr. over N.W. cor. of Frame Br. St. Line  
Turn to L.  $73^{\circ}09'$  and meas 378.6  
= Rec. dist. Find Iron in Willow, which  
is 0.56 W. and 0.25 S. of pt. as by  
the above construction.

July 27  
A.M. & P.M.

$73^{\circ}09'$   
 $26^{\circ}28'15''$   
 $99^{\circ}57'15''$

See L.S. 51.



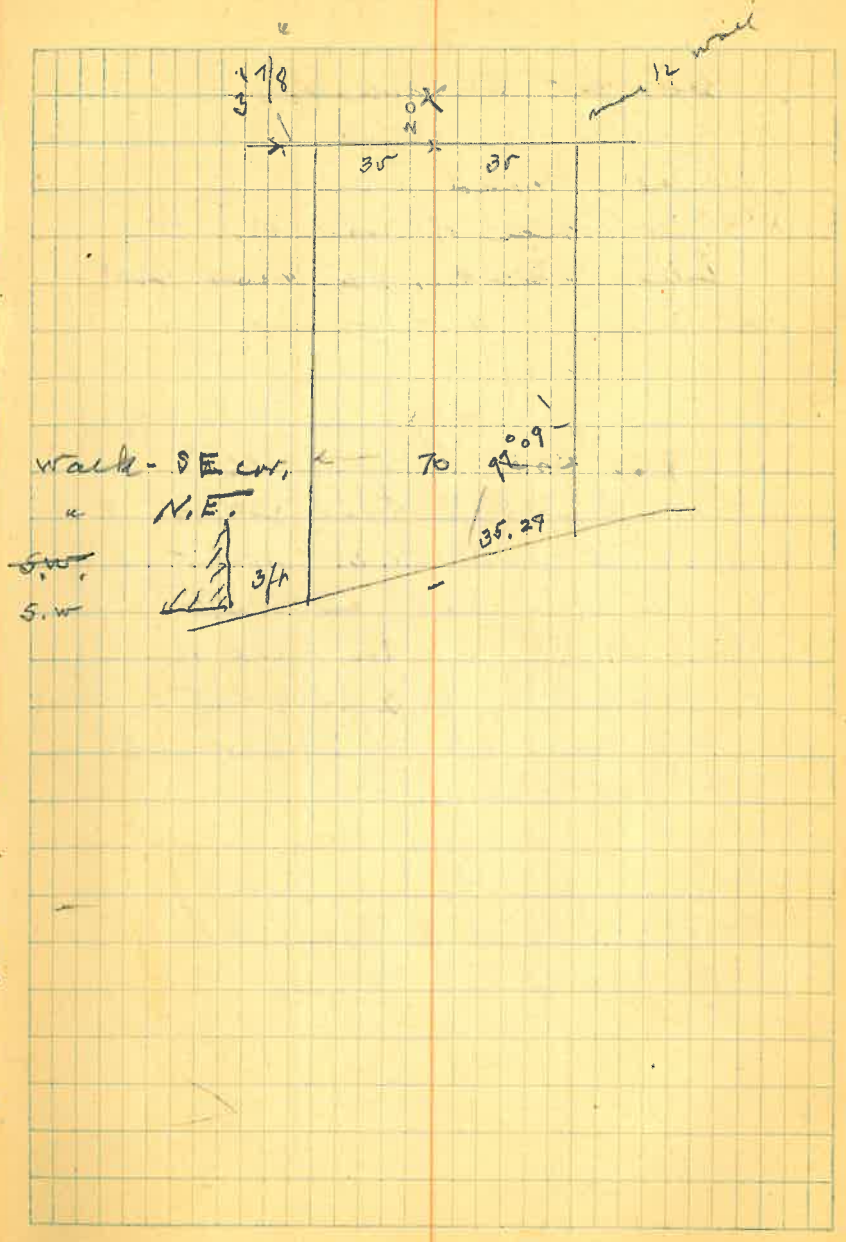




Aug 14. -  
offset line at Laundry.

3 ft at Broad  
3' 2" at rear of Laundry  
Extend this line to rear end  
Strike N.W. of cor.

4.60	104.60	100.
5.41	899.19	
1.33	103.27	
0.20	104.40	
1.65	102.95	
2.15	102.45	



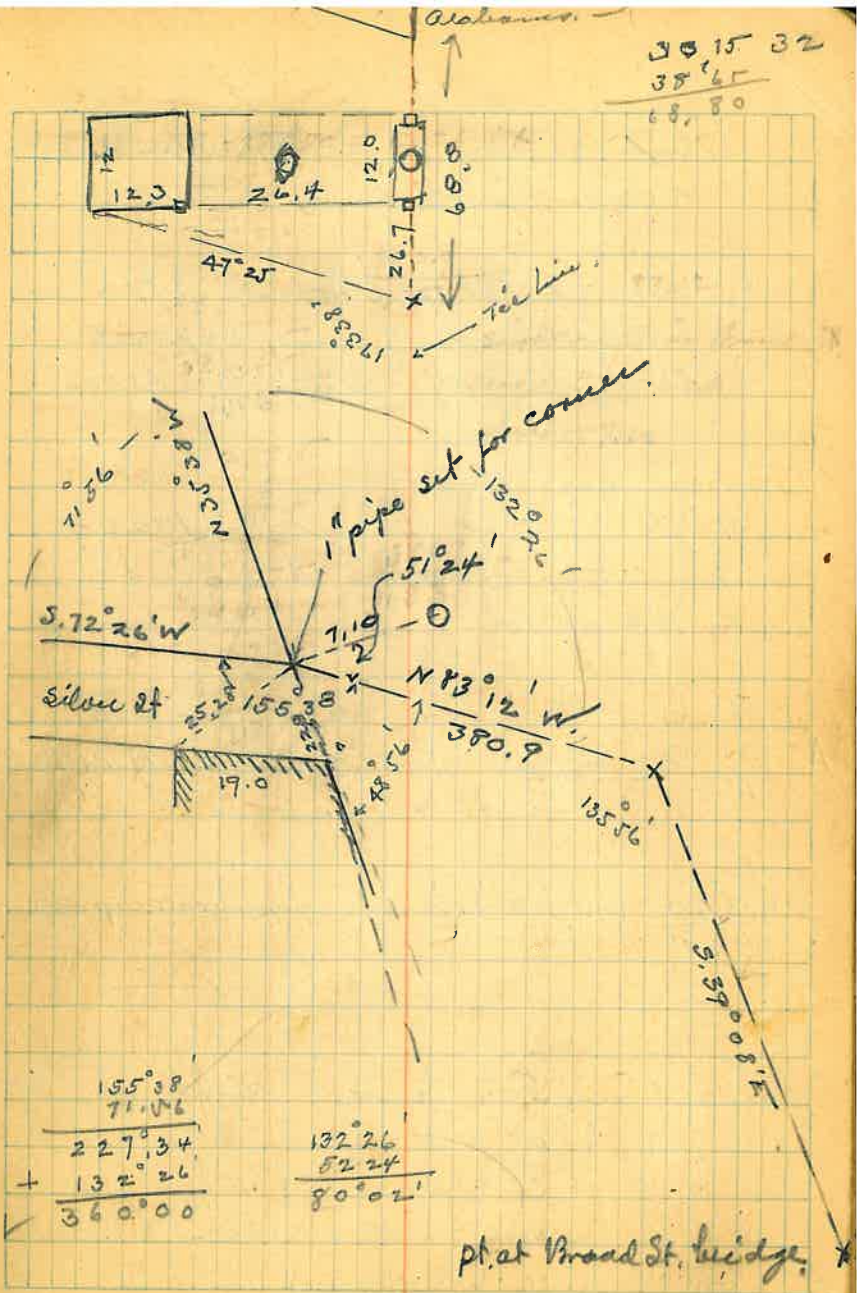


May 13 - 1931  
 gm + R. W.

Survey of intersection of  
 westerly line of North Broad  
 Street with northerly line  
 of Silver Street as by  
 City ordinances 280 & 281.

Set over pt in Broad St. (opposite  
 side from Ford Agency) and from  
 pt. at Broad St. bridge turn to R.  
 $135^{\circ}56'$  = from course  $S.39^{\circ}08'E$ , to  
 $N.83^{\circ}12'W$ . - and meas. 380.9 ft.  
 Find 1" pipe set for North corner  
 of Broad St. & Silver streets.  
 This pipe was set by Ed Stewart  
 Year 1925, and is O.K.

Set over pipe found and from  
 Tie line  $S.83^{\circ}12'E$ , turn to L.  $51^{\circ}24'$   
 dist. 7.10 to Tel. pole.





Survey and location of  
properties N. of Blake and  
West of Wood Street.

Find angle pt. in Blake St.  
on south side of street opposite  
short street to N.-marked Alley.

Transit over point.

angle  $\frac{1}{4}$   $\frac{1}{4}$  cor. to

old water reservoir

$$= 144^{\circ} 52' 10''$$

Mass. to  $\frac{1}{4}$   $\frac{1}{4}$  cor.

$$A \frac{281.23}{11^{\circ} 50'} = 275.24 \text{ stake at intersec of old fence}$$

$$\frac{438.20}{14^{\circ} 37'} = 424.0 \text{ to } \frac{1}{4} \frac{1}{4} \text{ cor. pipe-brass cap (O.D.)}$$

Transit over  $\frac{2}{4}$   $\frac{1}{4}$  cor. sight on  
 $\frac{1}{4}$   $\frac{1}{4}$  cor. to E

$$\Delta R. \text{ to pt. in Blake} = 48' 15''$$

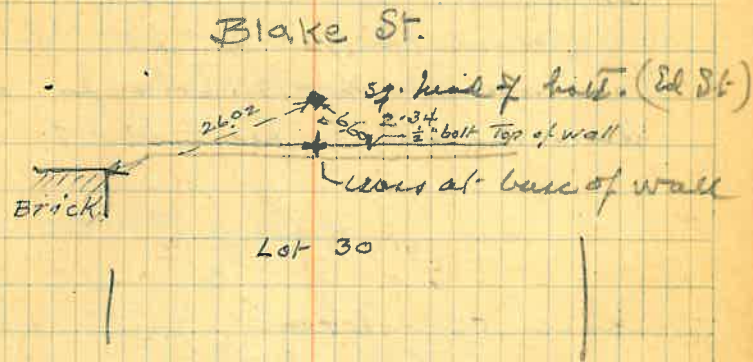
$$\Delta R. \text{ to Pennell's } \frac{1}{4} \frac{1}{4} \text{ stone } 218^{\circ} 08' - 21.60$$

on old fence line N. + S.

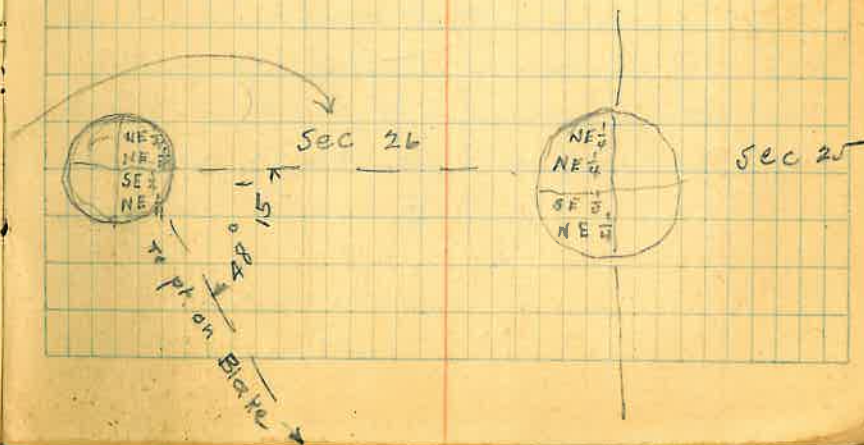
144° 52'  
289 44 30  
434 36 30  
144 52 10  
48 15

102 152

Aug 18 - 30  
Jm & R.W.



To page 109



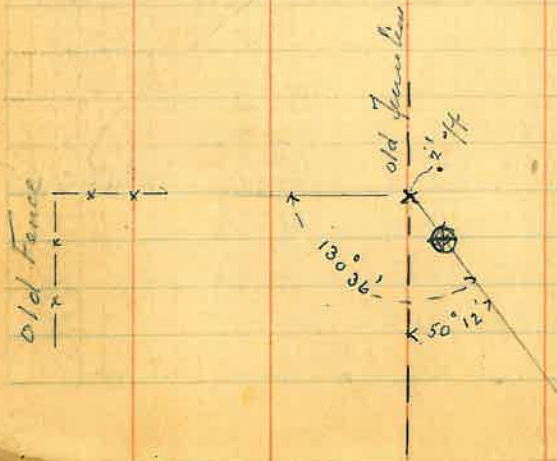


Tr. over pt A - p. 33 - sight on pt. in Blake  
turn to R. ~~set~~  $127^\circ$  for the average  
direction of an old cedar post fence.

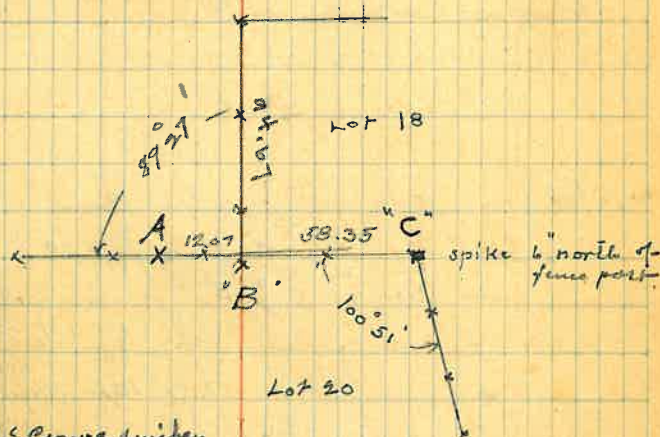
Reverse and set B stake for old  
fence corner - dist 12.07. "B."

- Aug. 19 - 30. -

Tr. over old  $\frac{1}{4}$   $\frac{1}{4}$  cor sight on  
pipe and cap (O.D.) set as being  
correct  $\frac{1}{4}$   $\frac{1}{4}$  cor. and locate  
old fence line as by wire on  
the ground and fast holes.  
Old  $\frac{1}{4}$   $\frac{1}{4}$  cor. is abt 2 ft east of  
said old fence line.



set over B. Sight on A turn to R  
 $89^\circ 27'$  along an old cedar post fence  
to a cedar post corner. -  
Dist 94.67 back boundary of Lot



Deed. W.S. Crowe & wife.

John Kendall

B. 13 - p. 170

Req. at a pt. 18.5 (185<sup>2</sup>) west and 15 ft. northerly from  
the southeast cor. of lot 33 in lot 1 - sec. 26. running  
northerly 8 feet 4 inches - westerly 37 ft. - northerly  
52  $\frac{1}{2}$  ft. - easterly 110 ft. - south easterly 12 ft. 4 inches -  
southerly 56 ft. 5 inches - westerly 74 ft. to p.o.b.  
and all improvements. -

May 14 - 1907

Rec. Aug. 15 - 1907.









Lot 1 Bl. 25 East Globe  
map N-1

Proposed grading for  
street to get connection to  
the Keegan's Sub. N. of Ash

BM.	7.1	107.10		100.00
1+70	0+00		9.20	99.9
1+20	+50		6.6	100.5
1+00	+70		5.2	101.9
0+89	+80		4.4	102.7
	11.15	118.02	0.23	106.87
+81	+88		11.2	106.8
+50	1+19		7.8	110.2
0+00	1+70		3.4	114.6
-30	2+00		0.7	117.3

0+00 = N.W. cor. Ash and 7<sup>th</sup>.

83

89

1+00 } survey in Bl.

1+20

1+70

Cont. wall S.E. cor. Ash + 6<sup>th</sup>

13.4 ft S. to edge of bank

N.W. cor. 7<sup>th</sup> + Ash by 7<sup>th</sup> S. to edge  
of 7<sup>th</sup> st

Continued p. 43



Tr. over N.W. cor. Ash and  
7<sup>th</sup>. (stake & nail set by Ed. Stewart.)  
sight on cor. concrete wall N.W.  
cor. Ash & 5<sup>th</sup>.

Turn 90° to N. -

Stake set by Stewart for S.W.  
cor. Maple & 7<sup>th</sup> is right for line.

A<sup>x</sup> set Iron on S. side line of lot 1  
Bl. 27 (N. line of Ash) 72 ft.

W. of N.W. cor. 7<sup>th</sup> -

Set Iron for N.E. cor. lot 1. -

" " " N.W. cor. 7<sup>th</sup>

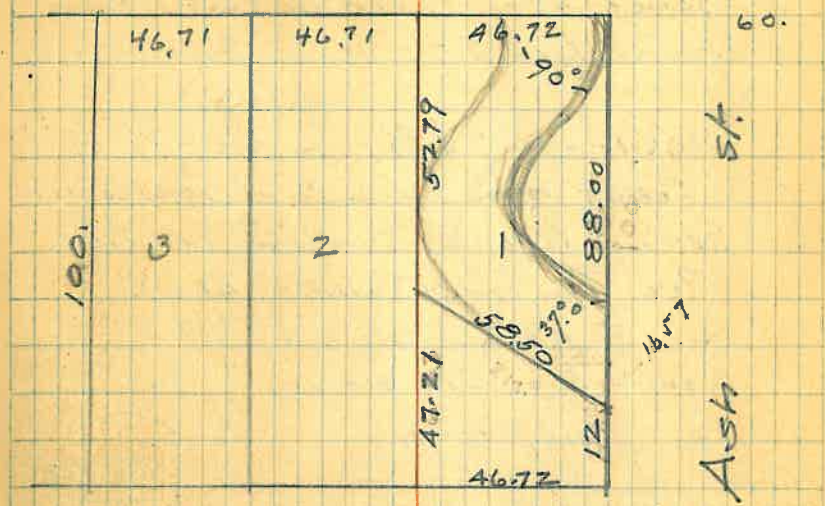
Set over pt. A, turn 90° to N.

27 ft. set Iron. -

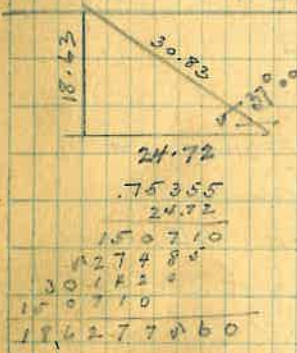
Set over and from pt. A  
turn to R. 217° - which gives  
the excavation line to N.E.  
to be boundary line for  
proposed st. widening.

accepted & made in a Ordinance  
Nov. 17-30. - & Deal made  
with Charles B. & L. for excava-  
tion of the alley in Bl. 27 -

7<sup>th</sup> - st. 60.



BL. 27



$$24.72 \times \tan 37^\circ =$$

$$\cos 37^\circ 190 = 24.72 : X =$$

2472000	79864
239592	30.83
760800	
638912	
218880	

24.72
.75355
24.72
150710
127485
301225
150710
186277060

To Page 53 →



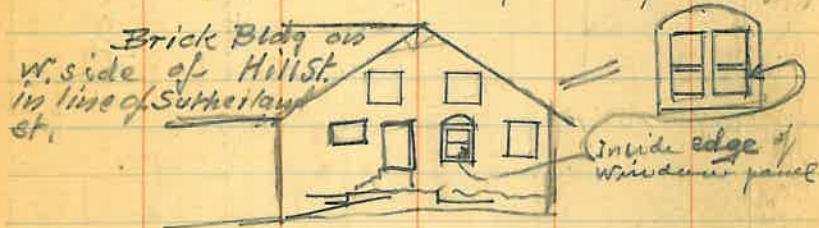
## Block 25. G.T.

Nov. 22 - 30

Survey front portion of properties  
in Block 25. (fenced in) extending  
out on High St. - betw. Cedar & oak.

Books 14 - p. 57 to 68. - For loc<sup>n</sup> of  $\phi$   
of Cedar with Sutherland & Devereux,  
Extend line E. to High. using  
Rec. dist. 285. and drive

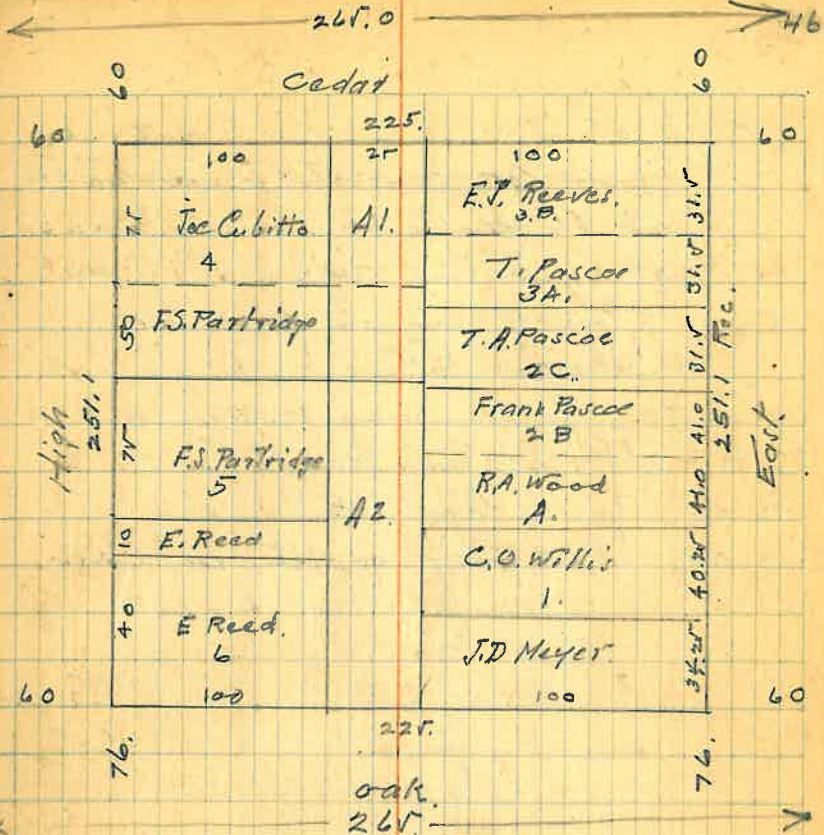
Tr. over  $\phi$ . Cedar & Sutherland - Sight  
on + pt. with maple. Fore sight



Turn 90° -

$\phi$  at Devereux is right for  
line and for distance

Extend line E. to High St. and  
set Bridge spike with cut in top.  
Dist. 285 ft. for  $\phi$ .



High St.

Tr. over  $\phi$  at High. Turn 90°  
and set  
spike top of high hill betw. Sycamore  
and Cotton wood.  
Locate fences along E. side of  
High.

58  
251.1  
285.1



## High St.

From cor. concrete fence post  
at S.E. cor. Cedar, near South  
along E. Line High

75.07 S. face of concrete post at  
Cubillos S. Line

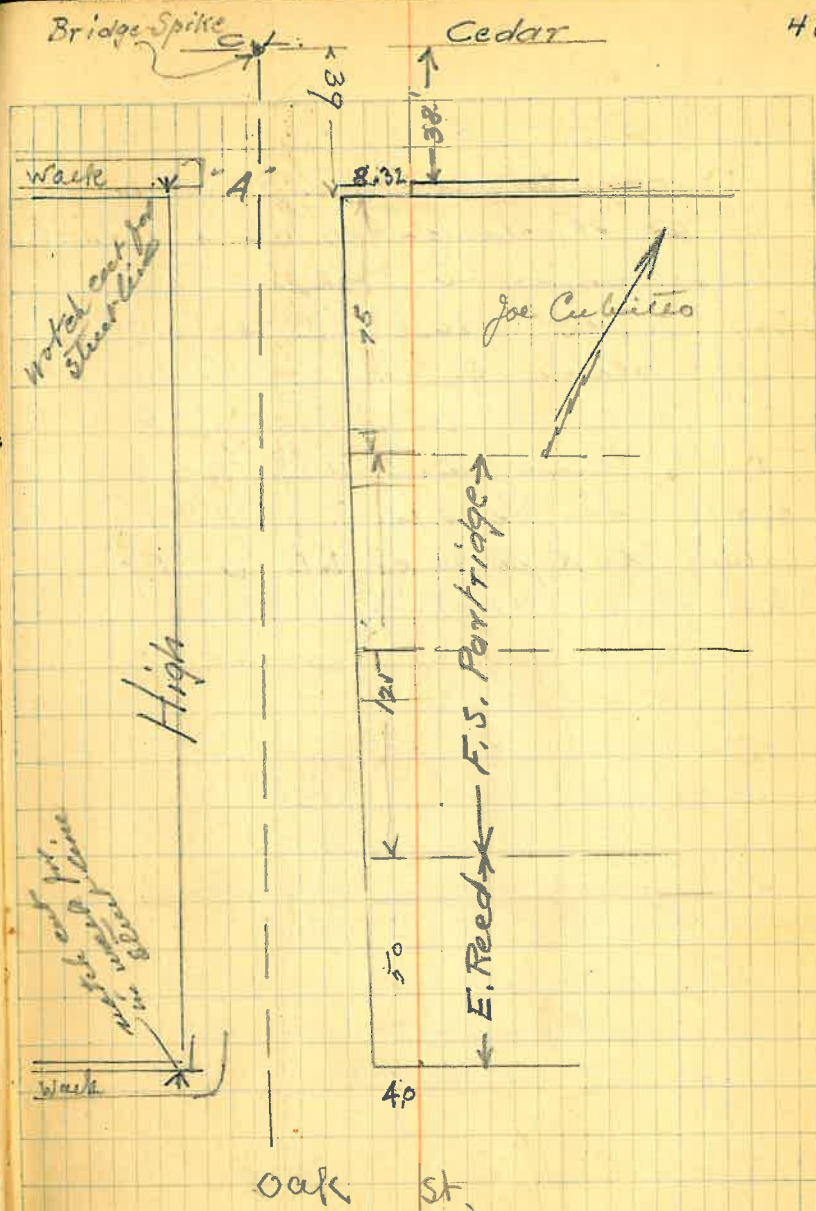
122.00 abt old fence line to E.

199.00 Fence line to E.

279.90 4x4 post at N.E. cor. Oak.



41





### Survey

Reg. at pt. on the W<sup>ly</sup> side line  
of Parker St. - 125 ft. S<sup>ly</sup> from the  
N.E. cor. of Lot 6 - Bl. 2 A, East  
Globe; thence S<sup>ly</sup> along Parker  
St. 75 ft.; thence W<sup>ly</sup> parallel  
with Maple St. 117.33 ft.; thence  
N<sup>ly</sup> parallel with Parker St.  
71 ft.; thence E<sup>ly</sup> 117.33 ft. to the  
p.o.b. - being the S. 55 ft. of lot 4  
and the N. 20 ft. of lot 3 of  
Bl. 2 A. Map 1 - East Globe.

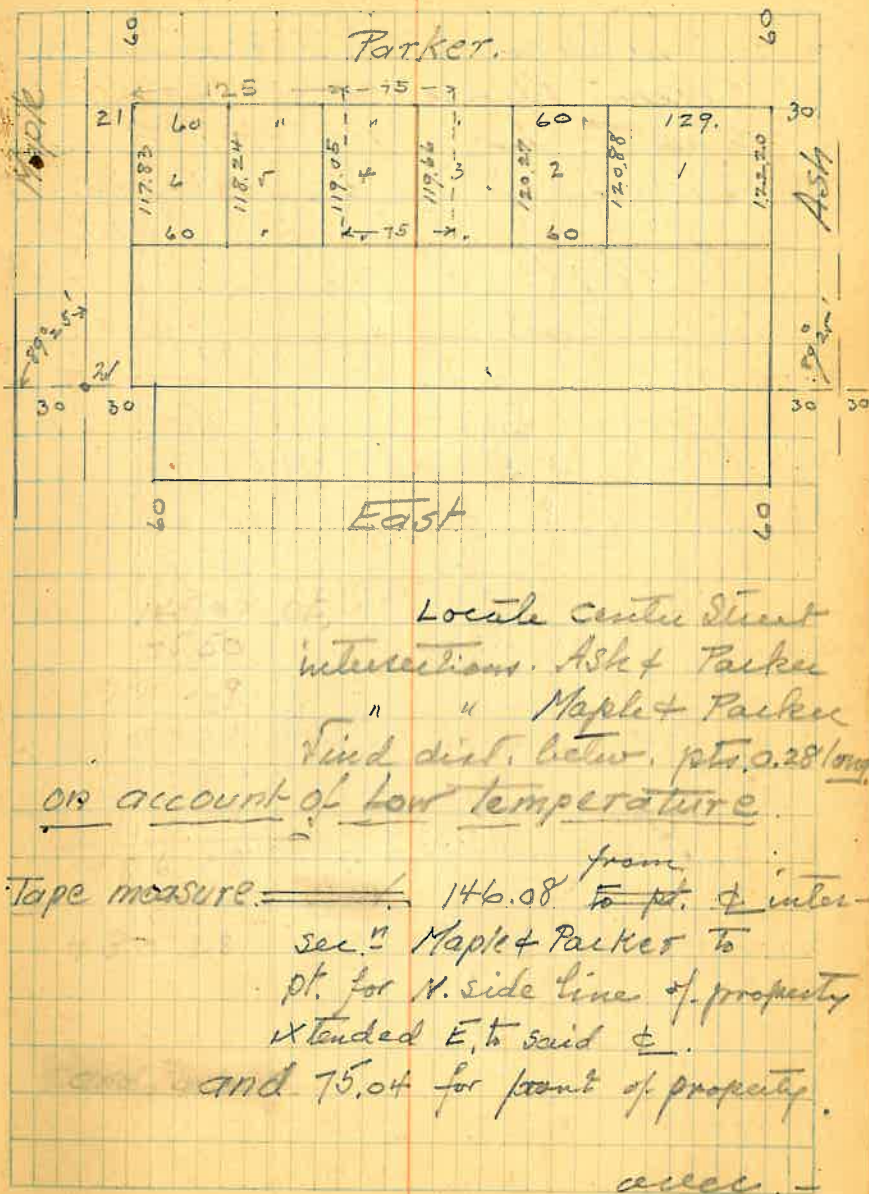
### Ash & Parker.

Pt. on Sewer Manhole.  
a + on rim bears S. 67° 42' W 0.84  
a + " " " N 67° 42' E 1.43

### Maple & Parker.

spike in asphalt.  
a + on manhole rim N 22° 18' W - 1.56 -  
a + on " " N. 22° 18' W - 2.78

429.4







From page 44. -

Cross Section of Approach to  
7<sup>th</sup> St. from AshTr. over 1+11.5. From N. line of 7<sup>th</sup> to S.  
cleft,  $\frac{1}{2}$ 

Dist 83.75	0+00	R. 70° 20'
	0+09	72° 54'
76.5	0+19.8	78° 42'
	18.6	
Dist 47.8	0+30.4	86° 40'
50.0	0+57.5	100° 48'
32.2	0+78.1	118° 20'
	18.9	
	0+96.9	134° 18'
	14.6	00° 00'
	1+11.5	
	1+41.5	
	31.7	
	1+73.2	
	41.7	
	2+14.9	

on 7<sup>th</sup> St. line 15' N. of NW cor ash.  
 ct. of 7<sup>th</sup> 30' at RA to W. line 7<sup>th</sup>

on center line, 7<sup>th</sup> going N.  
 " " " " "

B.M.	9.45	109.45		
0			7.9	101.6
0+09			2.00	107.5
19.8			1.5	108.0
33.4			0.6	108.8
T.P.	10.20	119.65	0.0	109.45
57.5			9.4	110.2
78.1			6.9	112.7
96.9			5.4	114.2
1+11.5			4.5	115.0
1+41.5			1.7	118.0
1+73.2			0.7	119.0
2+14.9			0.3	119.3
				101.6
				17.7

Cor. of wall at Peabody property

Elev. of black surface  
on it in ditch

top of 33.4



Assesment of 7<sup>th</sup> st.  
Approach from Ash St.

173.2

174.5

111.5

96.9

78.

59.5

33.4

19.8

3.3

1.8

5.1

2.2

8.4

6.2

8.3

10.8

10.6

March 11-31.  
Jules & Elmo North.

$$\frac{00}{20}$$

00

$$\frac{+1.8}{20.4}$$

B.33

$$\frac{00}{33}$$

+1.8

$$\frac{+2.0}{10.5}$$

B.10

B.21.

$$\frac{+1.0}{21.4}$$

+2.2

$$\frac{+1.8}{9.6}$$

9.

B.13.

$$\frac{+4.0}{14.}$$

+3.2

$$\frac{+2.6}{13.6}$$

B.13,

B.13

$$\frac{+4.2}{14.0}$$

+3.8

$$\frac{+3.2}{14.8}$$

B.14

B.12

$$\frac{+3.2}{12.8}$$

+3.8

$$\frac{+4.7}{16.2}$$

B.15

9

$$\frac{+4.0}{10.}$$

5.2

$$\frac{+6.1}{16.5}$$

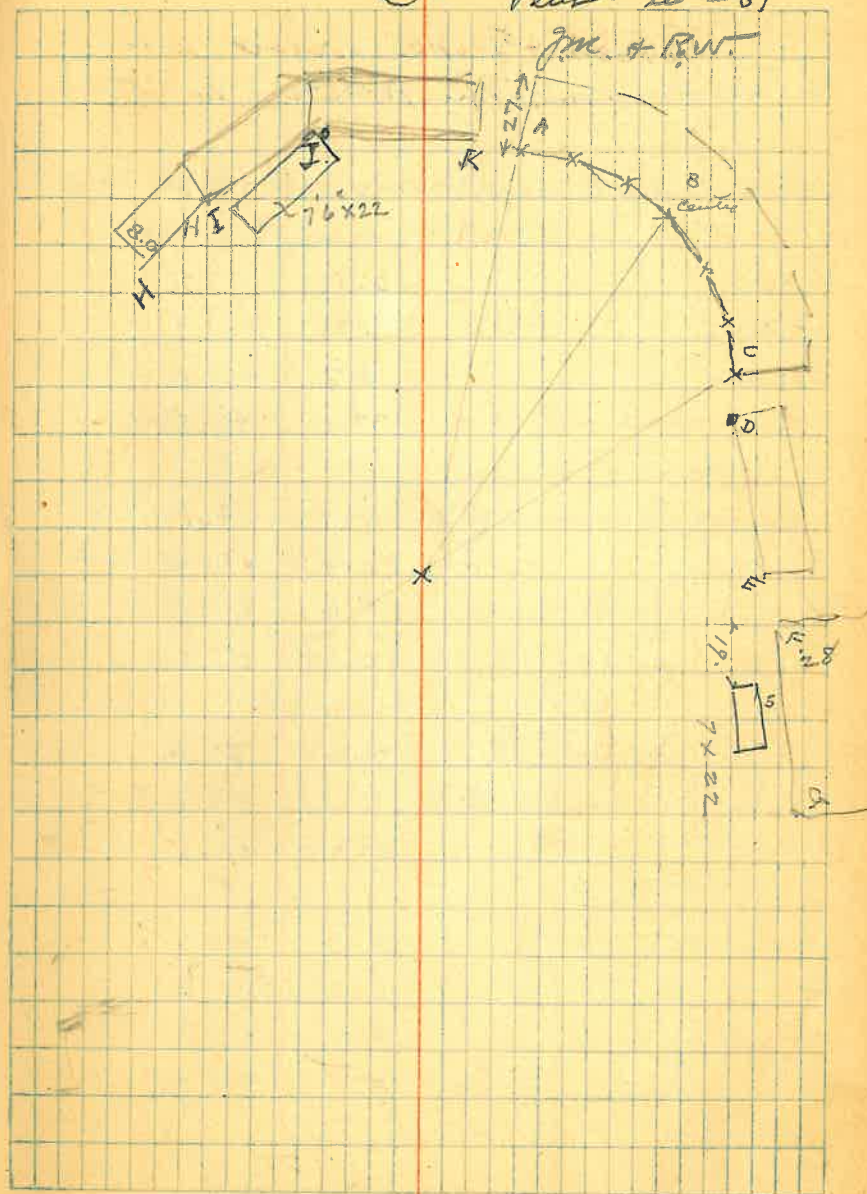
B.16.

# Ball - Park Survey - Location of Improve-nts

Stadia shots

Dist	Right	Dist	Right	
A		248	9° 16'	1
B		268	21° 12'	2
C		268	31° 18'	3
D		266	31° 44'	4
F		238	40° 35'	5
Fence corner		275	46° 40'	6
"	"	250	49° 40'	7
"	"	236	70° 50'	8
G		177	62° 41'	9
Fence cor.		192	66° 56'	10
"	" at same board	314	156° 14'	11
		294	212° 14'	12
		175	268° 58'	13
		228	290° 55'	14
		280	333° 50'	15
		192	339° 46'	16
H		187	342° 04'	17
I		219	354° 16'	18
J		230	357° 39'	19
K		247	8° 39'	20
Fence cor.		262	358° 20'	21

Smelter stack  
E. side -  $\frac{1}{2}$  way up -  
Feb - 20 - 31  
J.M. + R.W.





Grading of Newerick St.  
South from North St.

0				
BM.	0.17	100.17		100. -
0+00			0.80	99.4
+50			3.9	96.3
E. side			4.7	95.5
W. side.			4.0	96.2
100			9.7	90.5
E side			10.8	89.4
W. side			8.6	91.6
T.P.	0.10	87.58	12.69	87.48
1+25.			0.60	87.0
East			1.00	86.6
West			0.00	87.6
1+50			5.3	82.3
East			6.2	81.4
West			3.5	84.1
T.P.	00	74.93	12.65	74.93

Continued

0+00. - C of New + S. line of North St.

Top of large boulder (largest of two boulders)  
along E. fence of New near North St

Bl. 45 + 46

8-9-10 - Bl. 45 -

Lot 8 - N. 70 - W. K. Graham,

5.45 - Emmet E. Godley. -

29 - 8-A-10' - Raymond Boggala

9 - 30 - " "

10 - 70 - Sam Polan,

Bl. 46 -

1 A. - 112.5 F. E. Trainor

2 B. 112 - W. M. Anderson.

From p. 61

	74.93			50
2+00		3.8	71.1	
East		5.0	69.9	
West		1.00	73.9	
2+20.		7.0	67.9	
2+28		7.6	67.3	

Cross-section

S. line of  
North St.

0+00

+50

1+00

1+50

2+00

H.I. - 99.94

Rod

-	12.13	94	-	7.9	- 3.7	-	Cent. 22
	87.81						1.9
	00.09						1.4
	87.90	88.0		11.9	9.5		
	12.50	80.1		7.9			
	75.40						
	7.1						
	76.11	70		6.2			

from which it drops in canyon

- Made as by Council's order Apr. 21-31

00  
20.1

00

00  
20.1+1.4  
20.4

+2.2

+1.9  
20.4+1.2  
20.3

+2.4

+3.8  
21.0+1.4  
20.4

+2.4

+4.3  
21.100  
20

+1.2

+4.2  
21.0

00

00

00



Grading of 6<sup>th</sup> street  
betw. Oak & Monroe. -

Set axis @ intersection 6<sup>th</sup> and  
monroe. From Monroe st. @  
turn 90° to N. for @ of 6<sup>th</sup> st.  
and establish pts. -

0+00				
B.M.	6.85	106.85		100.00
0+00			12.3	94.6
+10			12.3	94.6
+30			10.2	96.6
+35			7.75	99.10
+50			5.7	101.2
20-R			4.4	102.4
20-L			6.5	100.4
+80			0.8	106.0
T.P.	7.79	114.20	0.41	106.44
20' R			7.3	106.9
20' L			8.5	105.7
1+10			3.2	111.0
20' R			1.9	112.3
20' L			4.2	110.0
	6.11	120.47	0.47	113.76
1+40			5.60	114.9
20' R			4.70	115.8
20' L			6.70	114.3

Sept. in Monroe. -

Top slab steps at N.E. cor. Monroe & 6<sup>th</sup>

Top 80

67 8.9 9.9 10.9  
 4.8 5.8 6.8 7.8

4.3 5.3 6.3

120.47

1+70	3.20	117.3
20' R.	1.5	119.0
20' L	4.7	115.8
2+00	3.4	117.1
20' R	1.3	119.2
20' L	4.4	116.1
2+40	6.6	113.9
20' R	5.2	115.3
20' L	7.6	112.9
2+60	6.45	114.32

— Grade elevations on  $\Phi$   
 Tilting the street grade

0+30	94.0	1 ft. up on E. side
50	98.0	1 ft. down on W. side
80	103.0	
1+10	108.0	
40	114.4	
70	124.8	
2+00	116.0	
2+40	114.0	



107 12.20 12 14 68  
 12.25 7.2 7.6 10.8  
 44 3.2

Summit is between 170 + 200 — add 1 ft.

107.00				
	94.0 =	13.0 =	4.4 and	3.2
	98.0 =	9.0 =	3.8	3.0
7.75	114.20	0.55 =	106.45	
	103.0 =	11.2	3.9	3.5
	108.0 =	6.2	4.1	2.7
7.20	0.14	114.065	10	

Rel. passing in arch.

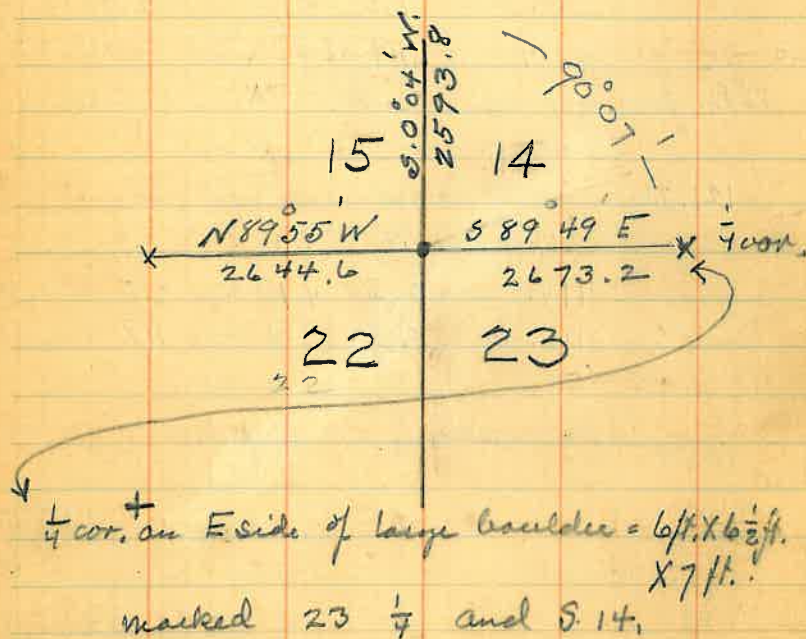
121.26

111.4	9.9	4.3	3.9
104.8	6.5	4.1	2.5
116.0	5.3	2.4	1.9



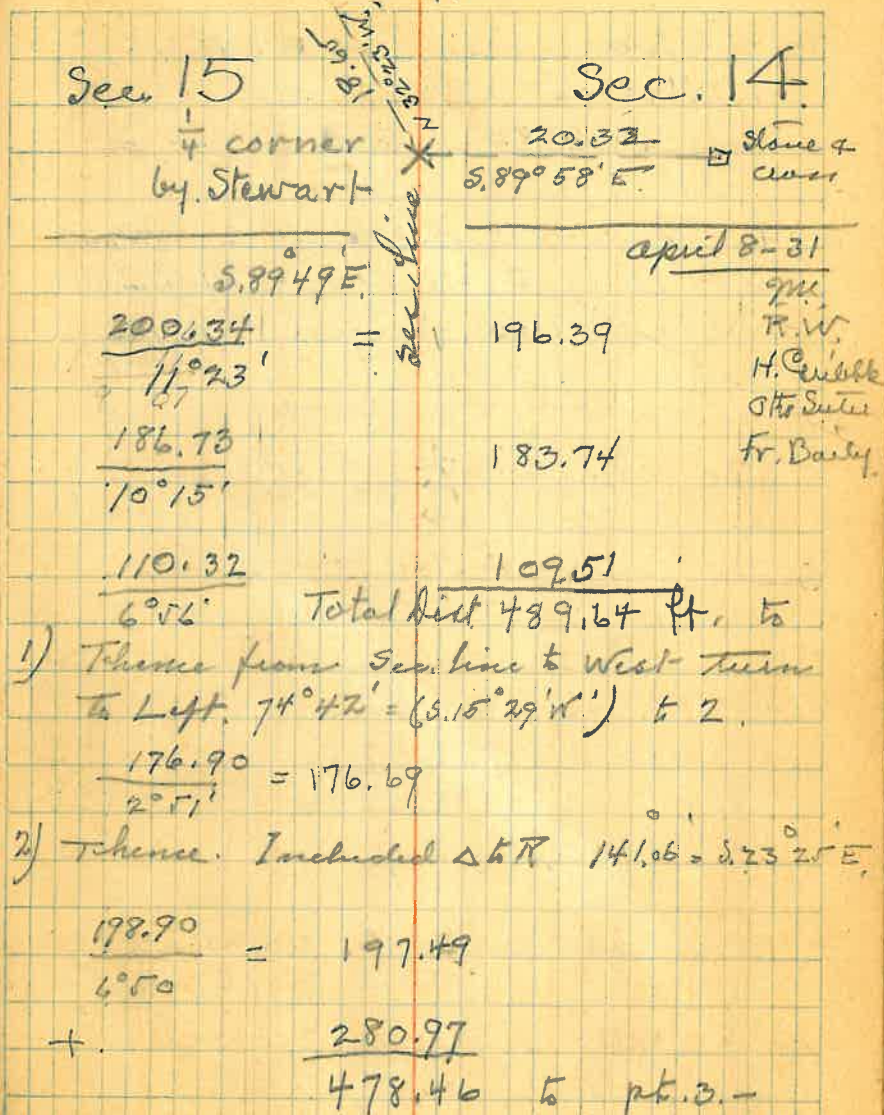
Cash Entry Claim,  
 Patent- 3398. -  
 B. 14. P. 330 - Deeds to owner.

Cor N-1 = 4x4 R.W. post. from which  
 sec. cor. to Sections 14, 15. 22 & 23  
 S. 85° 22' 20" W. 981.3 ft.



Mar. 27<sup>th</sup>-31 I retraced the Sec. line east  
 from above Sec. cor. and I found the  
 1/4 cor. to be covered over with a  
 tailing dump from O.P. Mine.

Cross in blaze of  
 Mer 7. tree



pt. 3. Theme included a to Left.  
 $148^{\circ}36'$  S,  $7^{\circ}59'$  W.  
 298.40 to pt. 4. -

pt. 4. Theme included angle to L  $150^{\circ}33'$   
 50.10 to pt. to edge of pavement  
 on Globe-Miami Highway.

See page 73.

Set over W=4 sight on N=3 - turn to  
 Right. - and locate NE. <sup>cr</sup> edge of pavement.

Stadia work,

1	$155^{\circ}38'$	$\frac{206}{190}$
2	$153^{\circ}06'$	$\frac{171}{1^{\circ}10}$
3	$151^{\circ}52'$	$\frac{135}{1^{\circ}20}$
4	$152^{\circ}45'$	$\frac{99.0}{00}$
5	$162^{\circ}14'$	$\frac{64.}{00}$
6	$192^{\circ}23'$	$\frac{41.0}{00}$
7	$239^{\circ}26'$	$\frac{49.}{00}$
8	$259^{\circ}15'$	$\frac{84.}{00}$
9	$263^{\circ}01'$	$\frac{124.}{00}$
10	$264^{\circ}01'$	$\frac{152.}{00}$
11	$264^{\circ}10'$	$\frac{180}{00}$
12	$265^{\circ}38'$	$\frac{211}{2^{\circ}}$







30.64  
16.28  
46.92

Survey of Lots 10-11-12-13-14-15  
in Block 64 - and Lot 6 and  
northerly 16.28 ft. of Lot 5 in  
Block 11. - of East Globe Township

30.64  
5  
153.20  
42.38  
195.58  
46.92  
148.66  
96.96  
51.70

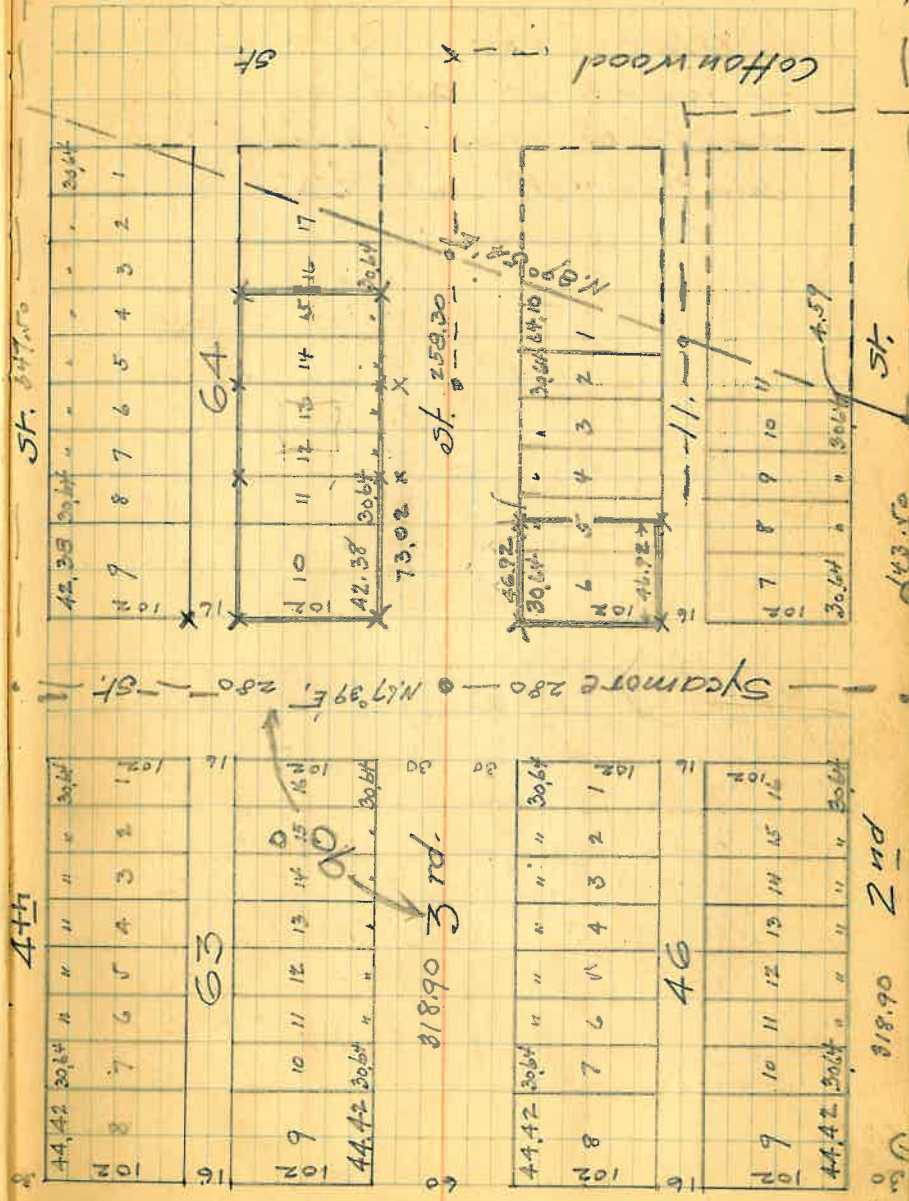
April 1<sup>st</sup> 1931 -  
42.38 9M.  
30.64  
73.02

In re-survey of East Globe  
Township - Ed. Stewart vs -  
blisk Street Center line -  
leaves

find his points of street intersections  
along Sycamore street; being for  
1<sup>st</sup> - 2<sup>nd</sup> - 3<sup>rd</sup> streets.

Set over & intersection Sycamore  
and 3<sup>rd</sup> and from & of  
Sycamore St. Turn 90° for & of  
3<sup>rd</sup> st. to south.

Construct Survey by these  
center lines





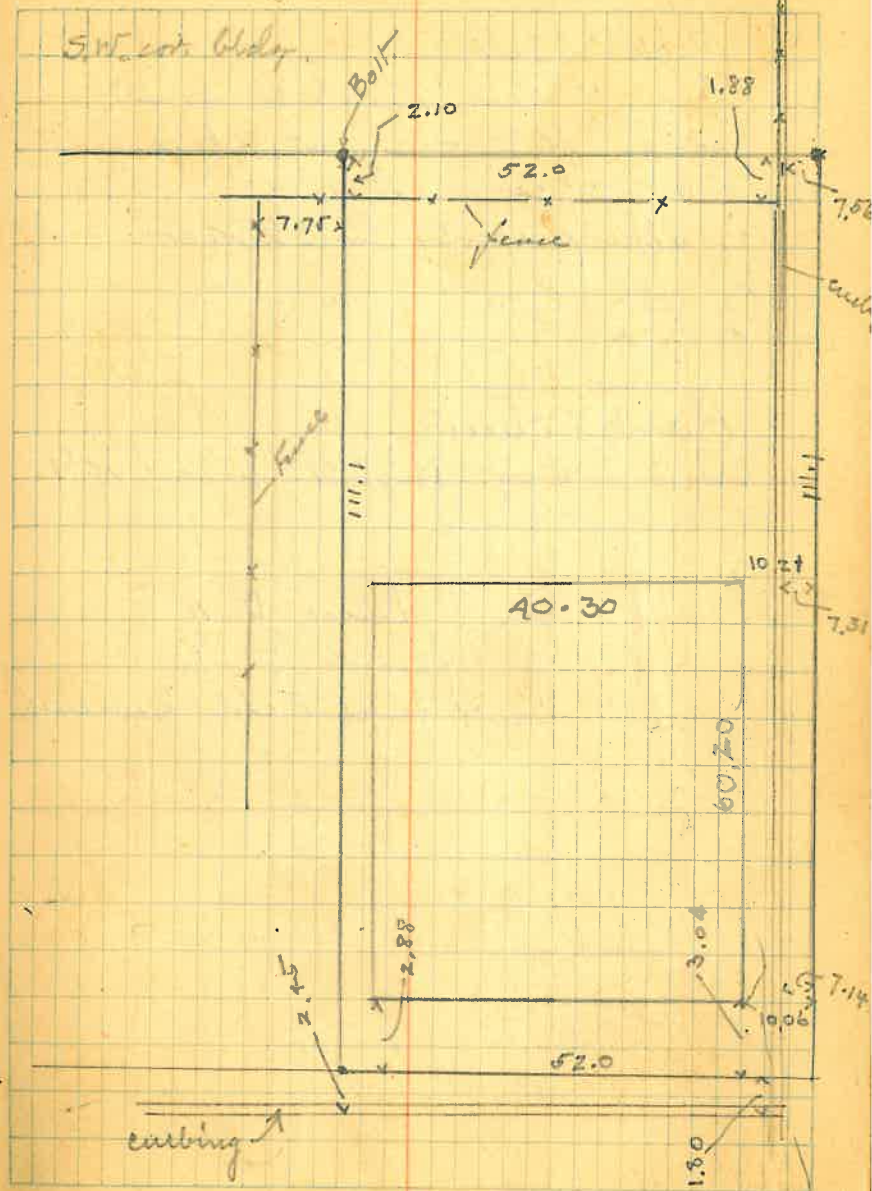
# Survey of Property for Henry Berry Post N<sup>o</sup> 4.

Beg. at the cor. of Bl. 33, intersection of High & Maple Street; thence westerly along N. line of Maple St. 52 ft.; thence N<sup>45</sup> parallel with High St. 111.1 feet; thence E<sup>45</sup> parallel with Maple St. 52 ft. to High St.; thence S<sup>45</sup> along West line of High St. 111.1 ft. to p. of b.

— Apr. 9 - 31. —  
G.M. + R.W.

☐ of Maple St. by street intersections with Sutherland at Severent - High and East streets. Being points set by Ed. T. Stewart for City of Globe. These points are on a straight line.

☐s. of Maple and High.



## High Street.

From N.W. cor. Maple st. as set,  
meas. N.  $\frac{1}{2}$  along West line.

144.10 N.E. cor. lot - as set.

166.17 abt. property line to West.

220.50 abt. " " " "

277.50 abt. " " " "

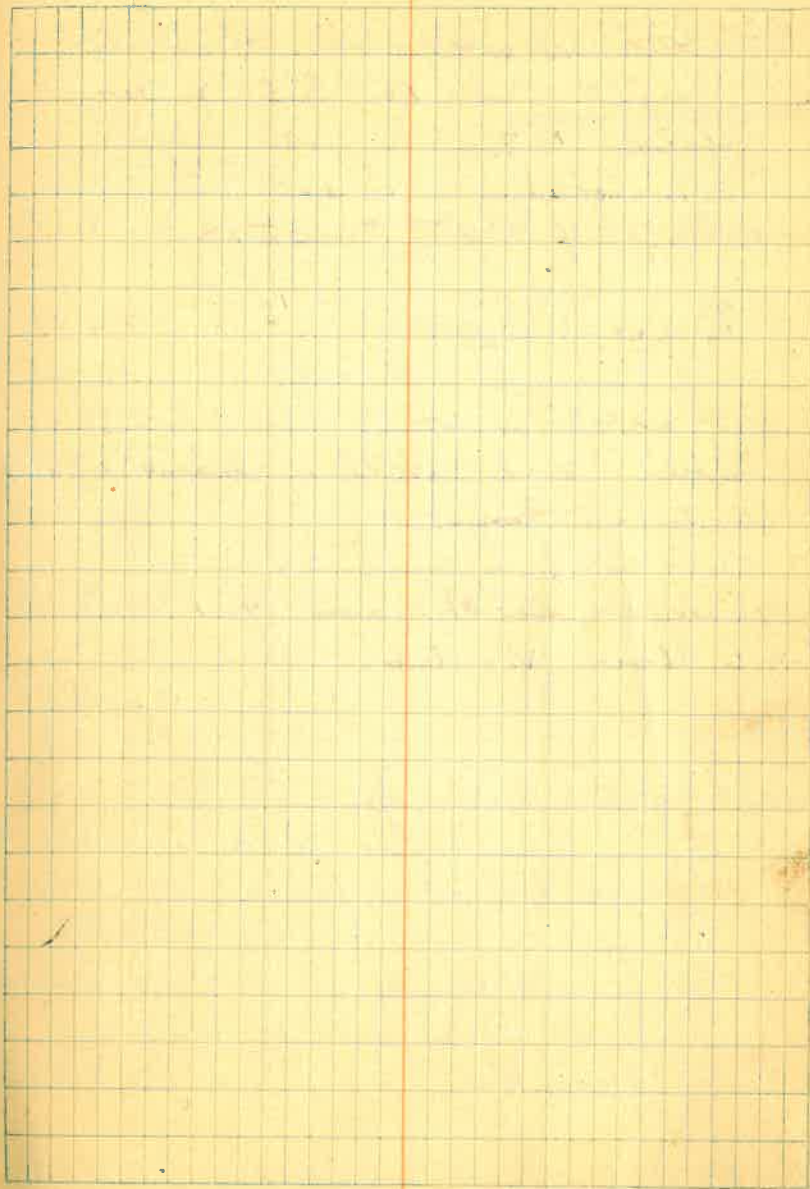
## Maple Street.

from N.W. cor. High st. meas. W  $\frac{1}{2}$   
along N. line.

58.7 abt. line of fence to N.

142.0 line of fence to N.

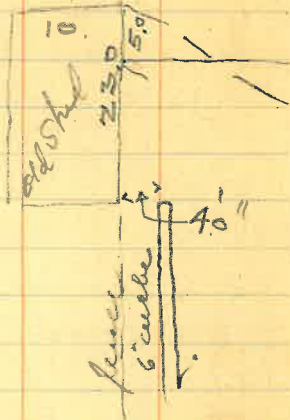
232.50 abt. line of fence. E. side sewer



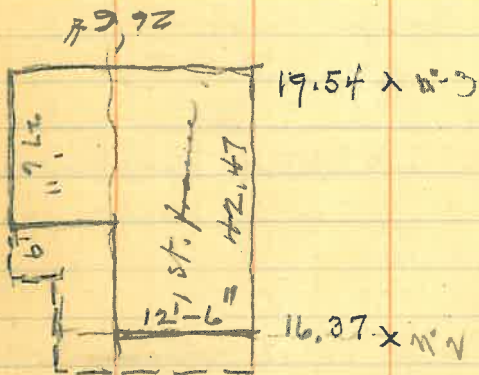




old fence



left porch

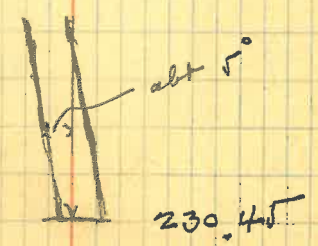


n=1 x 24.45



Distance each to fence is front 2'-8"

size of Culvert 13' x 21"



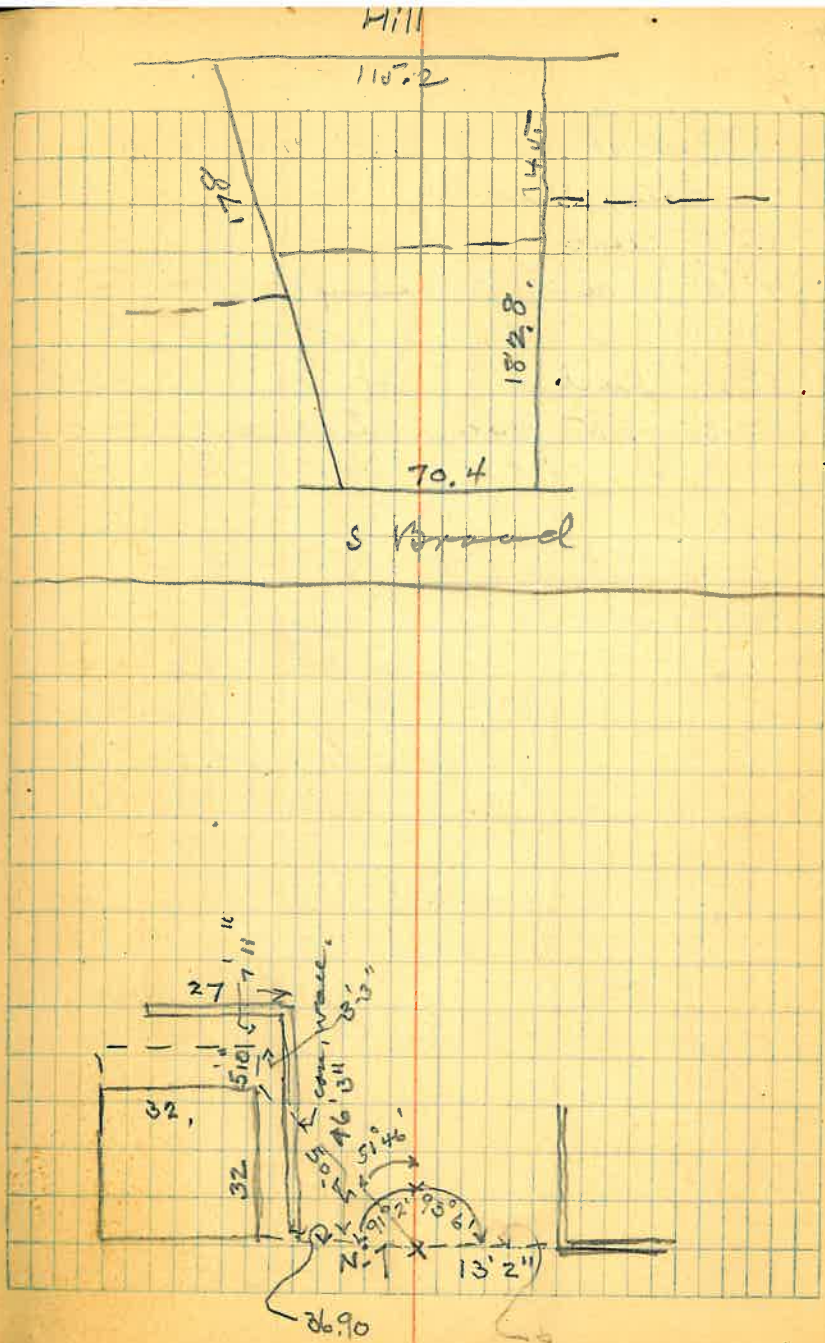
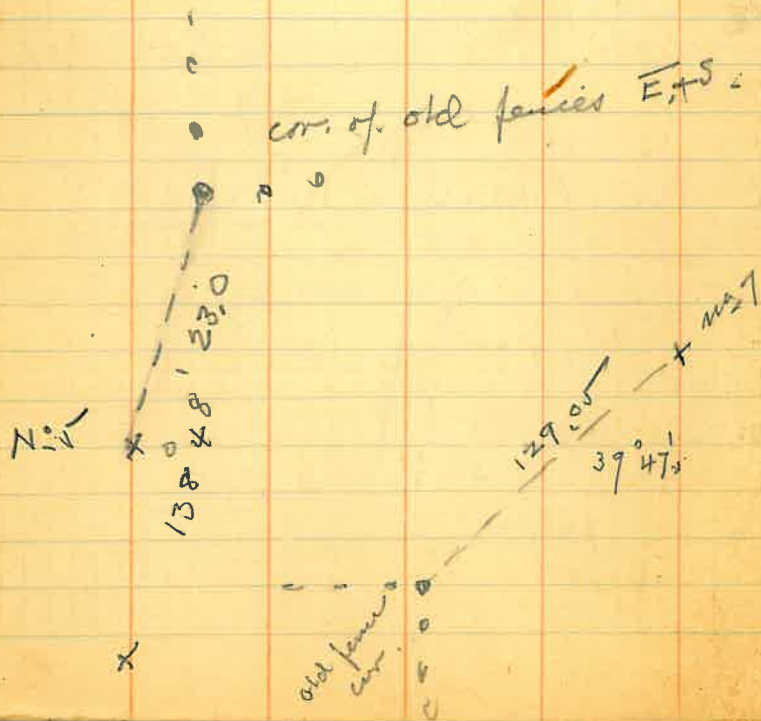
230.45



Lot 5 - Bl. 79 G.T.S.

R.W. Mayne,  
S. 70.4 on Broad  
by 182.8 deep.

G.B. Anderson  
115.2 on Hill  
by 145 deep.







Surface Elev<sup>n</sup>. along  
Base line

B.M.	4.60	104.60		100.00
			6.04	98.56
			5.1	99.5
			5.2	99.4
			4.7	99.9
T.P.	7.15	107.48	4.27	100.33
			7.	100.5
			4.8	102.7
	10.03	116.26	1.25	106.20
			6.7	109.6
			3.8	112.5
	11.91	127.22	0.95	115.31
			5.3	121.9
			7.6	119.5
			4.15	123.07
			2.8	124.4
			4.5	122.7
			0.2	127.0

side walk at match cut 5 ft. south  
of S. line lot, S. Broad St.  
side walk at match cut 5 ft. north  
of N. line lot, on S. Broad St.  
surface of Dick Mayner's lot smooth  
and level. -

Top of N-3 stakes

top of slope. level full width of lot.  
level to S. - level 10 to match - 4 for 40 + 4 to lot line.  
higher + grade to south, level 10 to N. - 6 for 30 + 6 to -  
level to S. for to 20. lot line -

top of culvert



bottom of wall to S

top " " " S

20' N

bottom wall to N1

top " " " S1 foundation

of bldg same as top of wall (full width of bldg, thence + 4.00 at lot line.

		127.22	
307	10.43	136.99	0.66 126.56
			4.8 132.2
			10.2 126.8
			4.5 132.5
			8.4 128.6
			15.0 127.0
			5.0 132.0
			3.8 133.2
328			2.35 134.64
			2.5 134.1
			5.0 132.0
			2.5 134.5
			5.2 131.8
			3.8 133.2
			3.2 133.8
			1.87 135.12
			1.45 135.54
			1.03 135.96

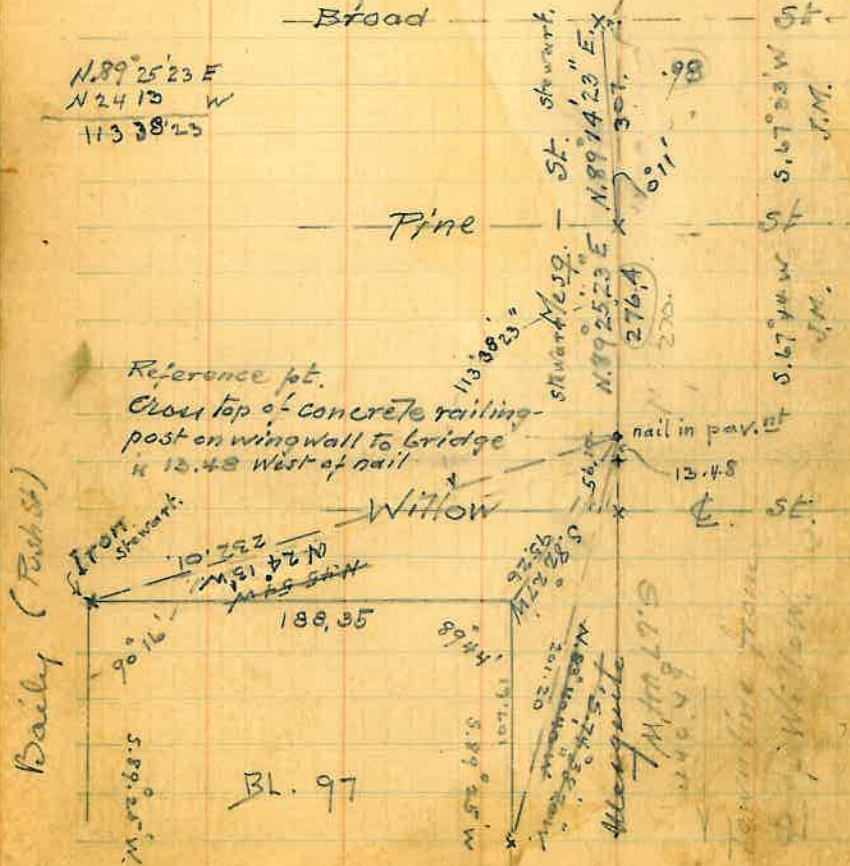
13 H.S. on wall  
 19 " N  
 on wall to N.  
 Bottom of wall to N.  
 4 ft. N. of N.E. cor. bldg.  
 at fence on N. line of lot.  
 Top of hill.  
 6' south  
 Top of wall to S.  
 28' N.  
 38 "  
 80 "  
 at fence cor.  
 walk at N.E. cor.  
 E of Hill at paving opposite N. line.  
 E " " " " " S. "



Survey of street in Bl. 97  
and additional ground needed  
to widening of said street

from notes of Ed Stewart  
Broad St.

$N. 89^{\circ} 25' 23'' E$   
 $N 24 13 W$   
 $113 38 23$



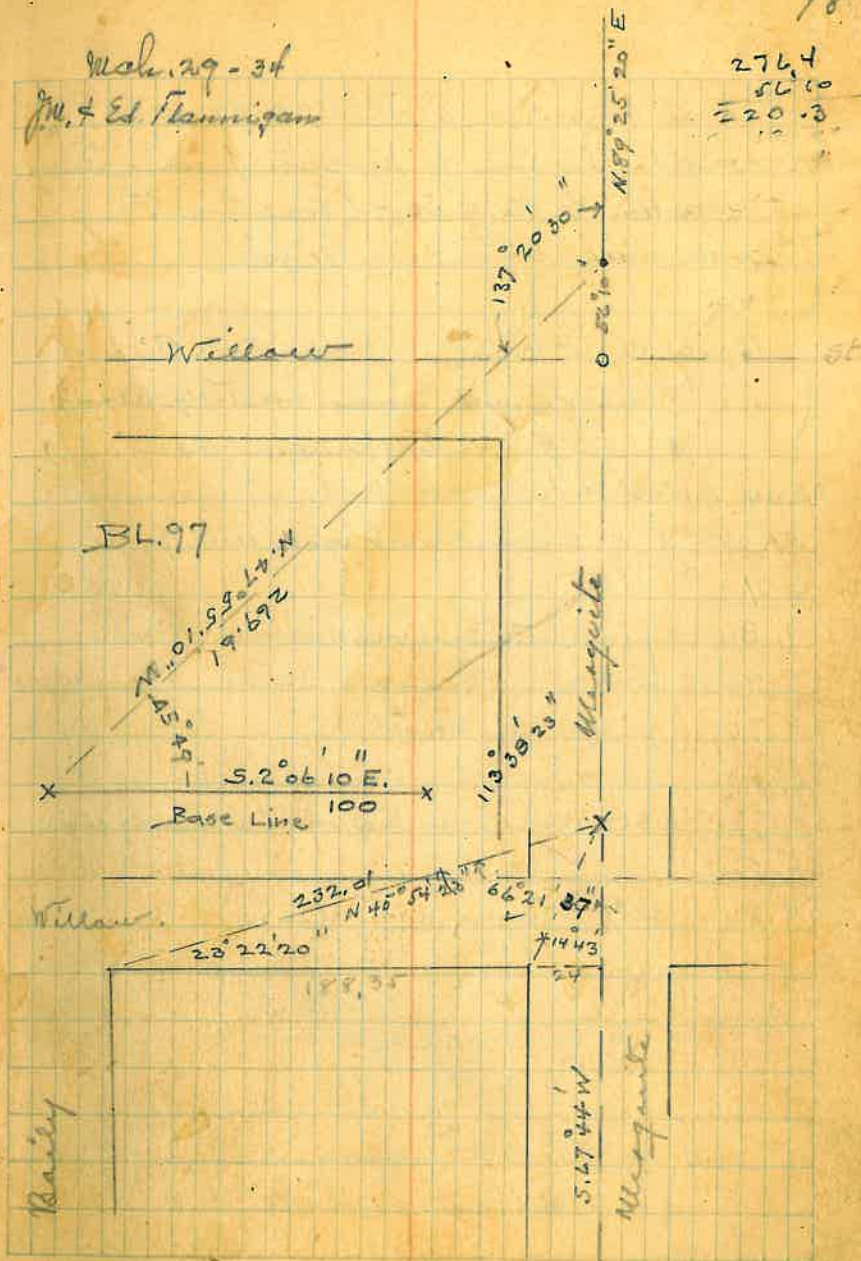
Reference pt.  
Close top of concrete railing  
post on wing wall to bridge  
is 12.48 West of nail

Bailey (Robt St)

BL. 97

March 29-34  
Jm. & Ed Flannigan

276.4  
56.10  
220.3



BL. 97

Bailey

Willow



Extend Base line. N<sup>o</sup> 29.88 to a  
pt. - in line of property fences <sup>to west</sup> along  
S line of Baily St. - (True line?)  
angle with base line 91°20'

Baily West line, - Town R.O.I. Base  
line extended mess mostly along  
south property fences.

25.04	Curb cor. - (Sanders)
51.68	☉ of Sanders west wall and fence.
+ 60.18	
111.86	Fence to south, division in walls.
+ 59.90	
170.76	Fence to south
+ 60.00	
230.76	abt rock wall to south (not clearly defined)
63.50	
294.26	abt Town site lines.

294.26  
51.68  
242.58

Tr. over S. end Base line  
Turn L. 153°26' from Base line  
meas 63.53 to pt. on line of front fences  
along north line of Mess. to W.

Transit across this pt. from pt. S. end Base line  
turn L. 116°14' to line of property front  
fences along north line Mess. to west.  
Reversing this Mess. st. line it strikes N. of  
of north line of E. Mess. to E.

	Meas. west along north line Mess.
28.61	- cor. of wall to N. north, -
+ 59.70	
87.31	cor pipe post at rock wall
+ 59.55	
146.86	☉ wall & fence to north
60.	
206.86	☉ fence to north
59.50	
266.36	West edge of wall to north

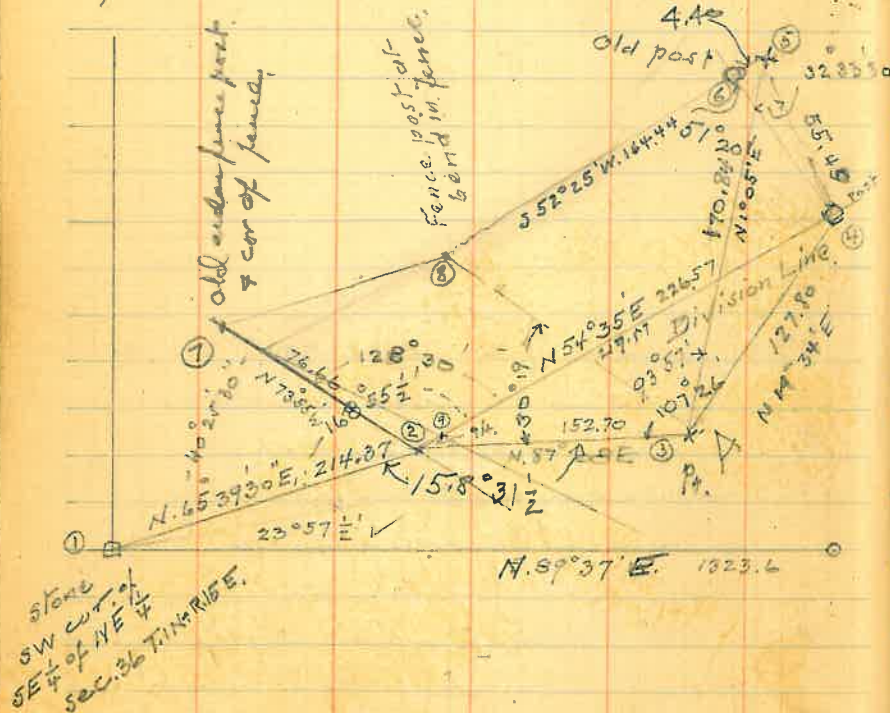
See page 149 for loc<sup>n</sup>  
of improvements



Sept. 17 - 1934

J.W. &amp; R. Wolf.

Survey for division of Tract 8  
in Agricultural Entry N: 01113  
of William C. Mayer. = SE  $\frac{1}{4}$  of NE  $\frac{1}{4}$  Sec. 36



## Field Notes

J.W. &amp; Rudy Wolf.

Sept. 17. -

Set Tr. over S.W. cor. of SE  $\frac{1}{4}$  of NE  $\frac{1}{4}$   
of Sec. 36. = Stone with + cut. = pt. 1,  
and sight an E  $\frac{1}{4}$  cor. = pipe set in  
ground (Stewart) = N. 89° 37' E. course  
shown on plat of Agricultural  
Entry N: 01113. = Recorded. -

Turn Left 23° 57'  $\frac{1}{2}$  dist. 214.37 = N. 65° 39' 30" E.  
to pt. 2. = a bridge spike driven in  
the ground near an east & west wire-  
fence.

Set over pt. 2 - Sight on pt. 1.

Turn to R. 40° 25' 30" = N. 73° 55' W. - a dist. of  
76.66 to corner fence post of 3 fences.  
= pt. 7. and



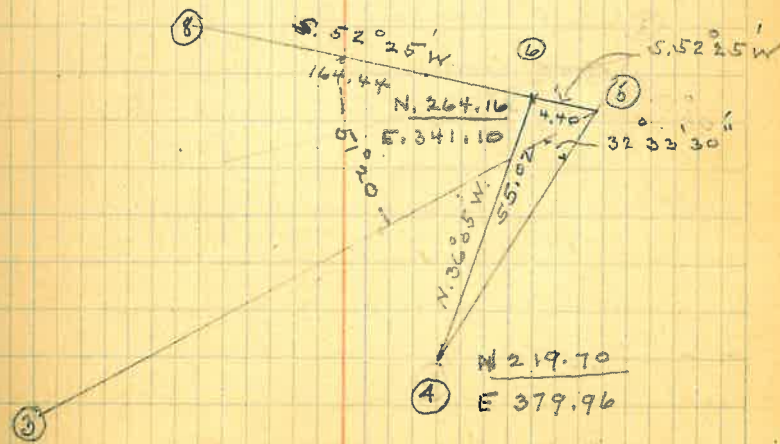
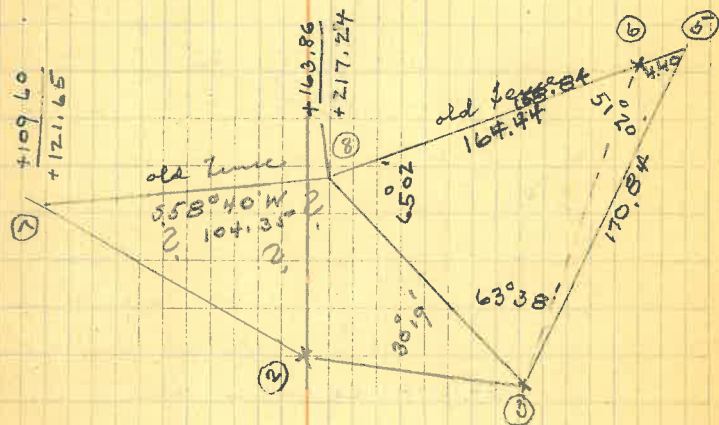
and turn R. from pt. 1.  $168^{\circ}55\frac{1}{2}' =$   
 $= N.54^{\circ}35'E.$  being a line of fence  
 decided upon to be the southerly  
 boundary of the North portion  
 of tract 8. - Distance calculated

and turn Left from pt. 1.  $158^{\circ}31\frac{1}{2}'$   
 $= N.87^{\circ}08'E.$  Dist 152.70 to stake  
 driven in ground on corner north  
 of Mr. Hay's residence = pt. 3.

Set Tr. over pt. 3 - sight on pt. 2  
 turn R.  $107^{\circ}26' = N.14^{\circ}34'E.$  dist  
 127.80 to sq. fence post at road  
 decided upon to be the SE cor of  
 of north portion of Tract 8.  
 and said post also being in  
 line  $N.54^{\circ}35'E$  from pt. 2.

and turn R. from pt. 2.  $93^{\circ}57'$   
 $= N.1^{\circ}05'E$  a dist. 170.84 to a stake  
 driven in the road in line of  
 fence to south west, which  
 fence is accepted as the north-  
 westerly boundary of Tract 8.

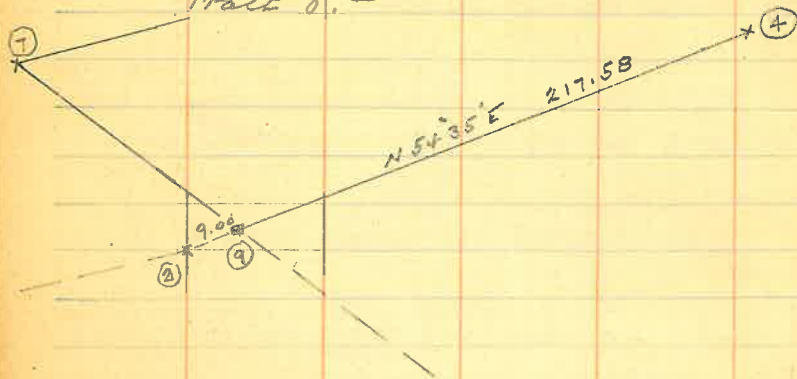
and turn R. from pt. 2 -  $30^{\circ}19'$  to  
 intersection of the north westerly  
 boundary fence at the angle point  
 in the said fence.



continued

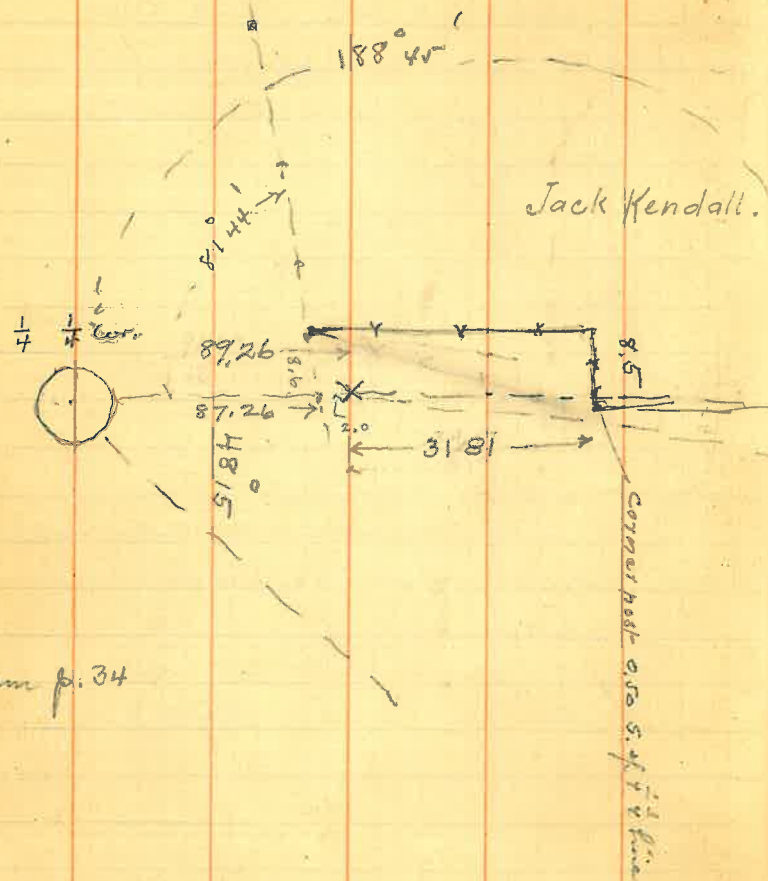


Set Tr. over pt. 2. plain stone  
 N54°35'E. dist. 9. ft. establishing  
 there by the S.E. cor. of fractional  
 Tract 8. -



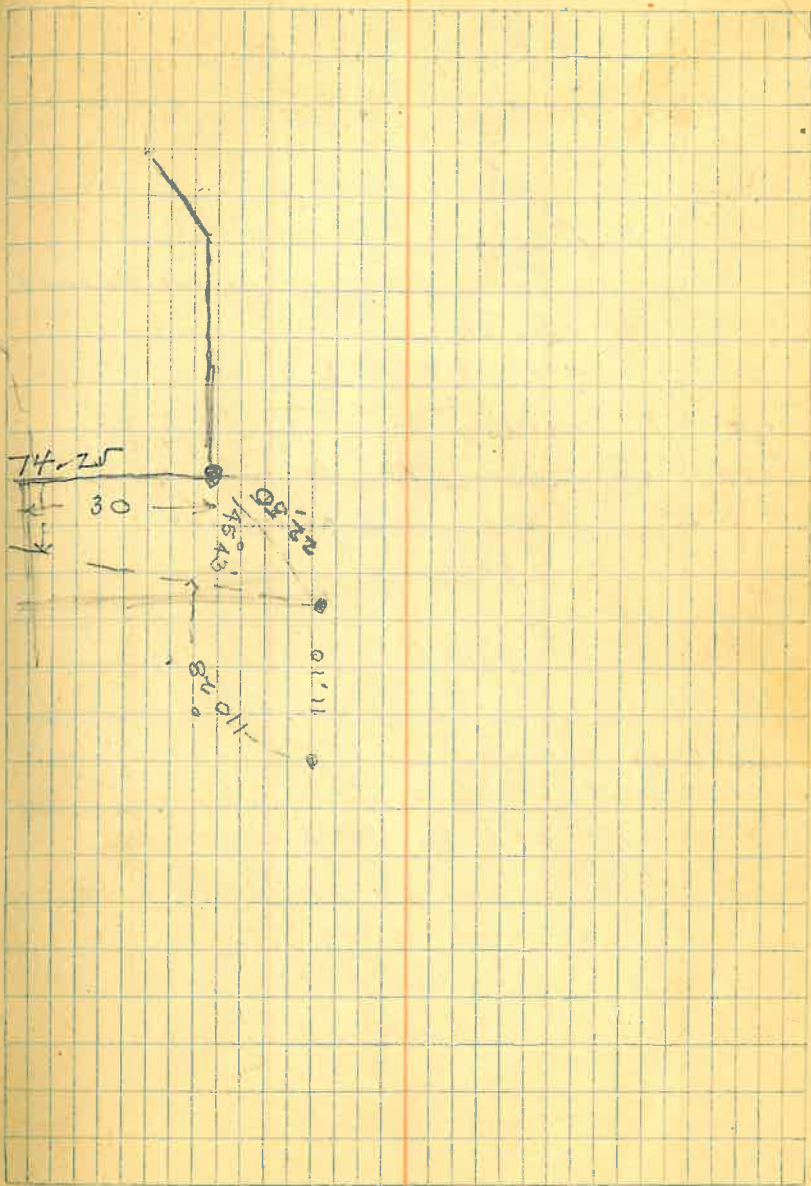
Dist 163.90 meas. - Stone to  
 west corner  $\Delta 41^{\circ}37'$

$$\begin{array}{r} N89^{\circ}37' E \\ 41^{\circ}37' \\ \hline 48^{\circ}00' \end{array}$$



from p. 34

Jack Kendall.





May 12 - 1935

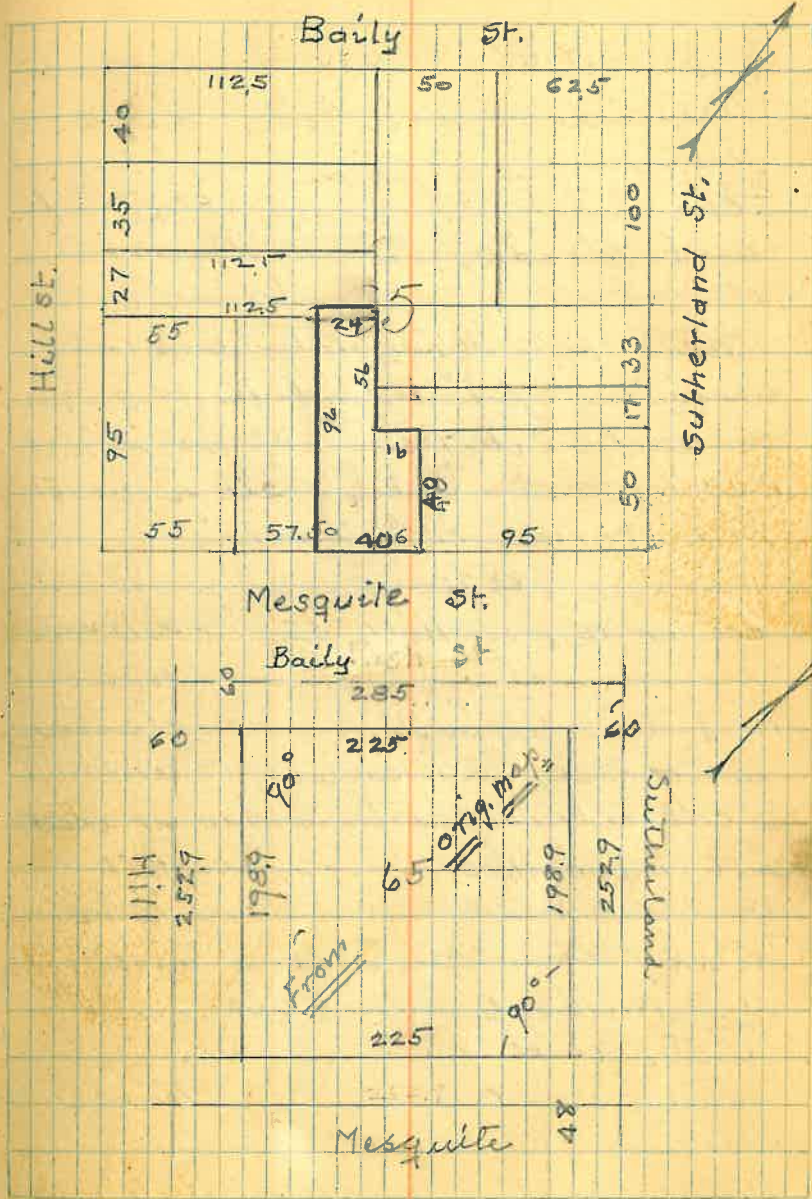
J.M. & Rudy Wolf

Survey of property in Block 65 of Globe Township for Mrs. Amelia Kirby.

Com. at a pt. on east side of Hill St 75 ft. southerly of N.W. cor of Bl. 65; thence easterly parallel with Baily St 112.5 ft.; thence southerly parallel with Hill St. 27 ft.; thence westerly parallel with Baily St 112.5 ft.; and thence northerly along Hill St. 27 ft. To place of beginning.

also

Com. at a pt. on east side of Hill St. a distance of 93.5 feet from S.W. cor. of Bl. 65 of Globe Township; thence northerly along east side of Hill St. 1.50 ft.; thence easterly and parallel with Mesquite St. 55 ft.; thence southerly and parallel with Hill St. 1.50 ft.; and thence westerly and parallel with Mesquite St. 55 ft. To place of beg.





Block 65, Globe Township,  
 Retrace block lines by street  
 intersection points as by  
 the City reciprocity of street  
 and blocks.

Transit over center intersection of  
 Werg. and Sutherland street, sight  
 on center intersection of Werg. and  
 Devereux st. Extend this line to  
 Hill st.

Measure 285 ft. and set pt. on  
 center line of Hill st. (Brass rivet)

Find nail set in Bl. pav. nt on center  
 line of Werg. 5.01 easterly, and  
 a copper rivet set in Bl. pav. nt 0.06 N. 4,  
 all on true line.

Transit over center pt. of Baily  
 and Sutherland. Sight on  
 center pt. of Baily and Devereux st.  
 extend this line westerly to Hill st.  
 Measure 285 ft and ~~set~~ set a  
 brass point for center pt. of Hill st.

Find each of the 4 angles of  
 the blocks to be  $90^{\circ}00'$  -

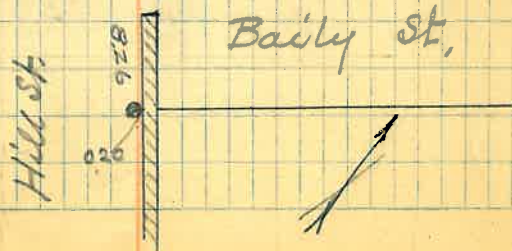
Distance on Sutherland st. between  
 center pts 252.9 ft.

Distance on Hill st. between center  
 pts. 252.9 ft.

Transit over center pt. Hill and Werg.  
 locate N.E. cor. <sup>said streets</sup> and mark same  
 with a cross cut in top of concrete  
 coping. - Find a + cut Easterly  
 and another + cut in coping West-ly  
 of same.

Transit over center pt. Baily and  
 Hill st. Drive pipe for S.E. cor. of  
 said streets.

North end of rock wall is 8.26 in Baily st.  
 Face of wall at cor. set is 0.20 east.









Survey lot 10 - Pl. 97

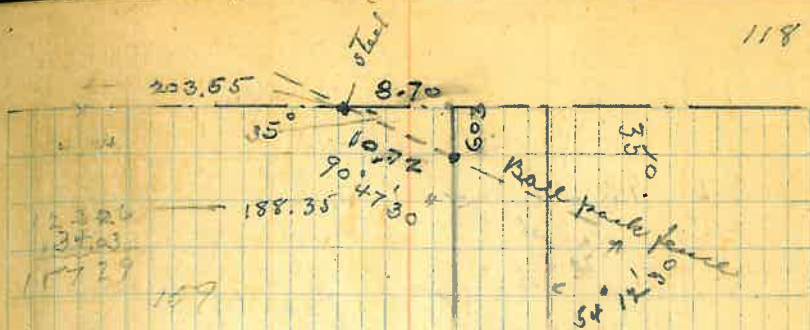
West Bailey Street,  
 Run South line by iron set  
 by E.S. for cor. of Willow St.,  
 188.35 feet from Mesquite St.  
 and parallel to same.



W. Mesquite

Townsite line  
 0 - E. of Mesquite meas. north along

8.80 - pipe set as reference point on Town line  
 + 194.85  
 203.65 set iron S. of Park fence.  
 + 8.70  
 212.35 = S. Line Bailey = P.I. with Town line.

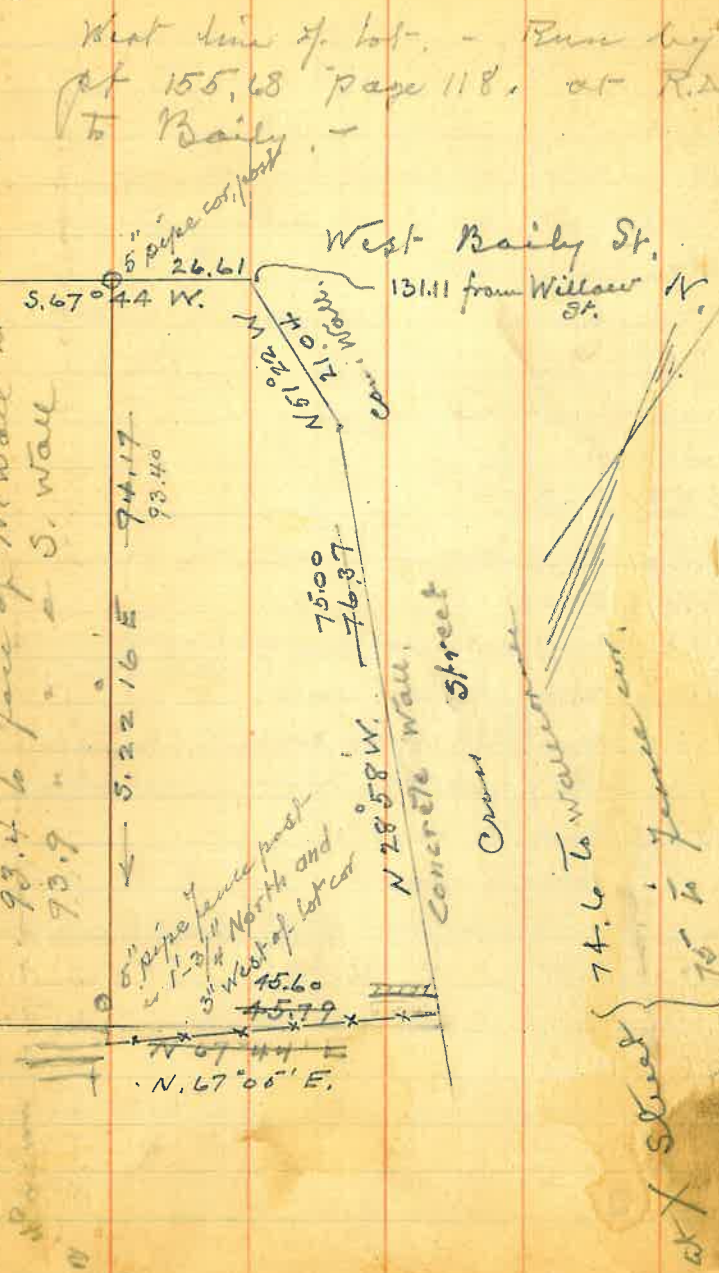


S. line of W. Bailey St. Meas. W.  
 from Ed Stewards iron set for S.W. cor.  
 Willow.

- 53.99 point.
- 102.81 east face of new rock wall
- 105.93 west " "
- 113.16 point
- 123.26 point in line of face of wall to south - 18.60 to angle point
- 131.11 corner of low wall.
- 157.28 face of concrete wall to south
- 157.72 center of wall to south & center of 5" cor. pipe post.
- 217.87 fence to south
- 277.80 fence to south
- 394.33 Iron set 6.03 east of P.I. with Town line.
- 400.36 N.W. cor. of Pl. 97. (P.I. with town line)



119  
 93.4 Fence posts - 4" E - in line of N. wall  
 93.4 to face of N. wall is 0.6 E of S. wall  
 93.9 " " " S. wall



at X Street } 74.6 to wall  
 } 75 to fence cor.

What line of lot - Run by pt 155.68 page 118. at Rd. to Bailey -

	N 51°		S 22°		N 28°		N 67°		Total
	N	S	N	S	N	S	N	E	
1	S 67° 44' W	26.61	10.08	-	10.08				
2	S 22° 16' E	93.4	86.44	-	96.52	35.39			
X	N 67° 05' E	45.60	-	78.76	42.09				
	N 28° 58' W	75.00	-	13.14					
5	N 51° 22' W	21.04				16.44		000	

Aug. 2nd 37.

0+00 = Intersection of S. line Bailey with Rock wall  
 fractional position of Bl. 97 of Globe Townsite, more particularly described. (as by boundaries defined)  
 Beginning at a point on the south side of West Bailey Street S. 67° 44' W and a distant of 131.11 ft. from Willow Street running thence S. 67° 44' W along said West Bailey Street 26.61 feet to a concrete wall; thence S. 22° 16' E. along said wall 93.40 feet to the south end of said wall; Thence N. 67° 05' E. along a fence 45.60 feet to the intersection of a concrete wall being the westerly boundary of Cross Street thence N. 28° 58' W along



121  
said wall and exactly boundary a distance of  
75 feet to an angle point in said wall and there  
N. 71 32 W. 21.04 feet to place of beginning.







- Deed -

That part of lot 3 in Bl. 88  
 Commencing at Northeast cor. lot 3  
 at intersection Bone and Broad,  
 thence southerly 25 ft.,  
 westerly 60 ft.,  
 southerly 25 ft.,  
 easterly 60 ft. To p.o.b.  
 B. 42 - p. 212 June 1<sup>st</sup> 1928

21-136 - 32-616 -

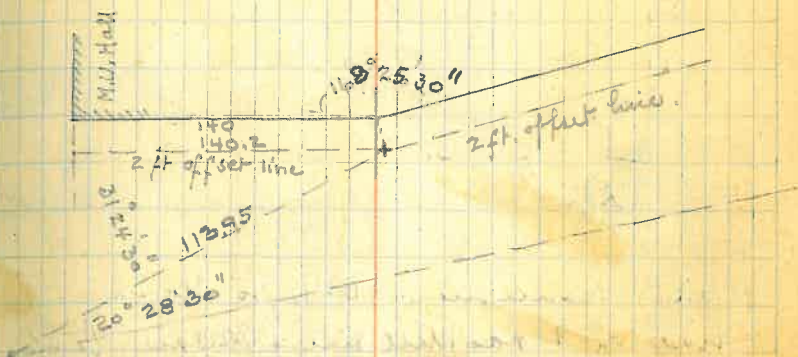
De Guir Foo, Ori, deed.

lot 2<sup>d</sup> 3 in Bl. 88 of C.T. - Commencing  
 at a pt. on west side Broad St.  
 25 ft. southerly from intersection  
 Broad & Bone Streets, thence southerly  
 11 ft. - easterly 17.6; southerly 19 ft.,  
 westerly & parallel with Bone 75 ft.,  
 northerly parallel with Broad 30 ft.,  
 easterly parallel with Bone 60 ft. to p.o.b.

Feb. 24 - 1913 - 21 p. 136

July 23 - 1937, J.M. &amp; T.W.

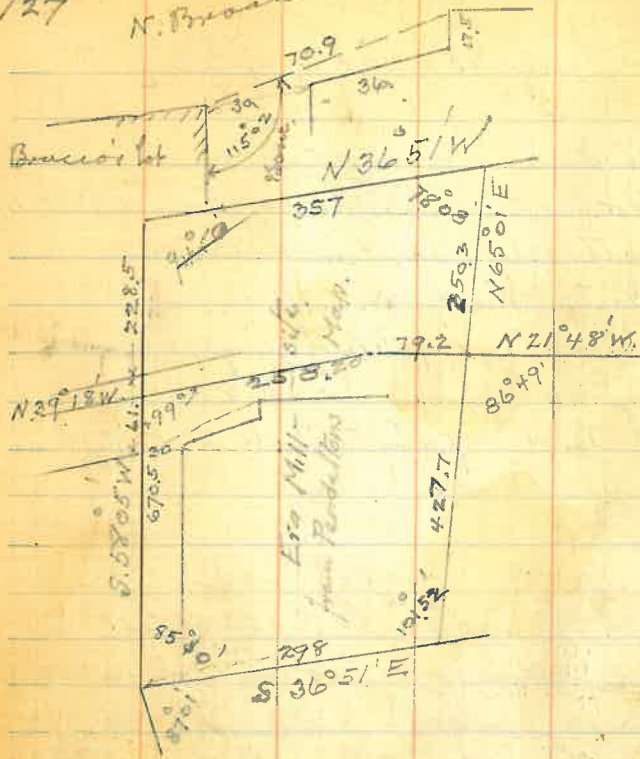
North Broad St.  
 From SE cor. (cor. of iron platform) of Union Union Hall  
 meas. northerly along line of buildings,  
 30.0 North line of U. U. Hall  
 52.68 Division of building.  
 80.90 " " "  
 140.00 Angle point in building line.



From angle pt. meas. northerly along  
 building line.  
 30.95 Division in buildings.  
 74.90 " "  
 103.24 Cor. of Bldg  
 103.81 notch for lot line  
 128.87 + at street cor.



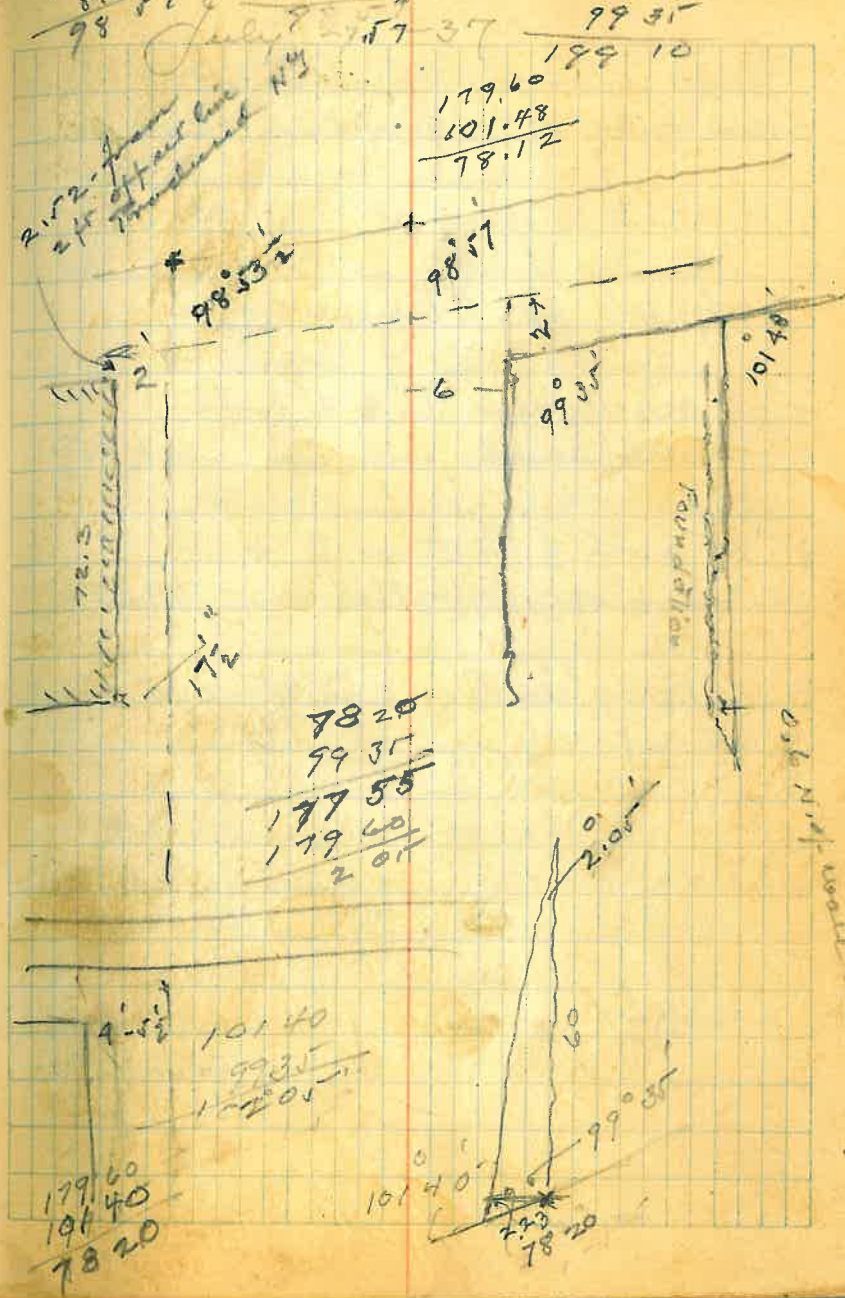
N. Broad St.



Dist. Monument W.4 to North  
line of Erao Mill site (B.11-p.7)  
= 258.2      Angle with north line  
Mill site. (Iron set for N.W. cor.) = 99° 00'

S.E. cor. of 2-story concrete Bldg. = N.W. cor  
Banc & Broad is right for this Mill-  
site line.

179 60  
81 3  
98 57  
51° 03' 4 = 53 . 128  
162 06  
99 31  
199 10



2 1/2 story frame  
off all line  
foundered N.Y.

179.60  
101.48  
78.12

78 20  
99 31  
177 55  
179 60  
2 01

101 40  
99 35  
177 01

179 60  
191 40  
78 20

101 40  
99 35  
78 20

Old N.W. corner line



Distances - on Base line.  
 Mark 4 to 6' offset pt. 234.42  
 6' pt. to 2' offset pt. 22.64  
 2' offset pt. to Process cor.  
 + at property bend to + 2' north  
 of Chinaman's wall cor. 104.85  
 + 27' north of wall cor to +  
 on 6' offset of Home 79.15  
 + on Base line to + 4 7/8' offset 41.87



179.60
99.35
80.25
45.15
306.35
351.35
234.42
22.64
257.06
258.20
1.14 ✓

old wall foundation old bldg to  
 west was 117.55 from  
 Chinaman's wall

at 50 west is 17th in street.

64.23 length of Chinaman's bldg.

72.30 " " Process bldg.  
 west end is 0.53 south

Process cor. to hot cor. on street 30.75

hot cor. to Chinaman's lot 25.7

S. hot cor. on Road is 09 north of 2.25 bldg.

S.W. cor. Iron is 2.03 from wall on the

angle of 101° 48' in front

on the angle of 99° 35' it is

N.E. cor. + in wall 2.03 east or cor. on north

20' lot line produced easterly

22' lot line against 16.11 - 1.7 = 258.2

S.W. cor.

Del 10/31



July 27 - 37

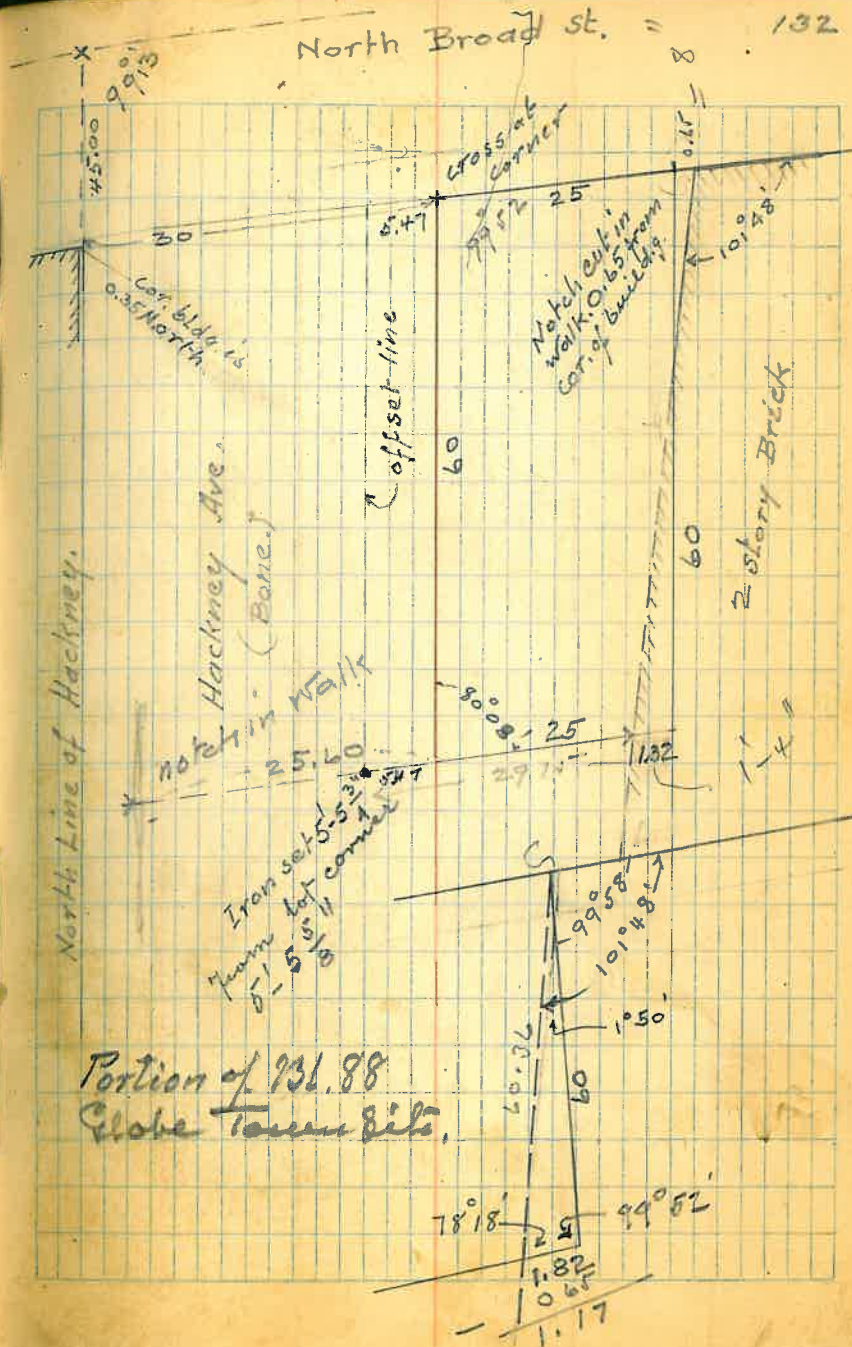
Bone Street, North line.

Find Iron base set for N.W. cor.  
Era Mill site (B. 14 p. 55 & 79)

Broad St.

From monument at south  
end of Broad St. bridge measure  
along Pendelton's base line  
northward. (B. 10 - p. 7)258.2 ft. to intersection of north  
line of Era Mill site = (N. line  
of Hackney Ave.) find + cut in pavement  
0.22 west of straight line,  
cut new +

Bone St. North line.

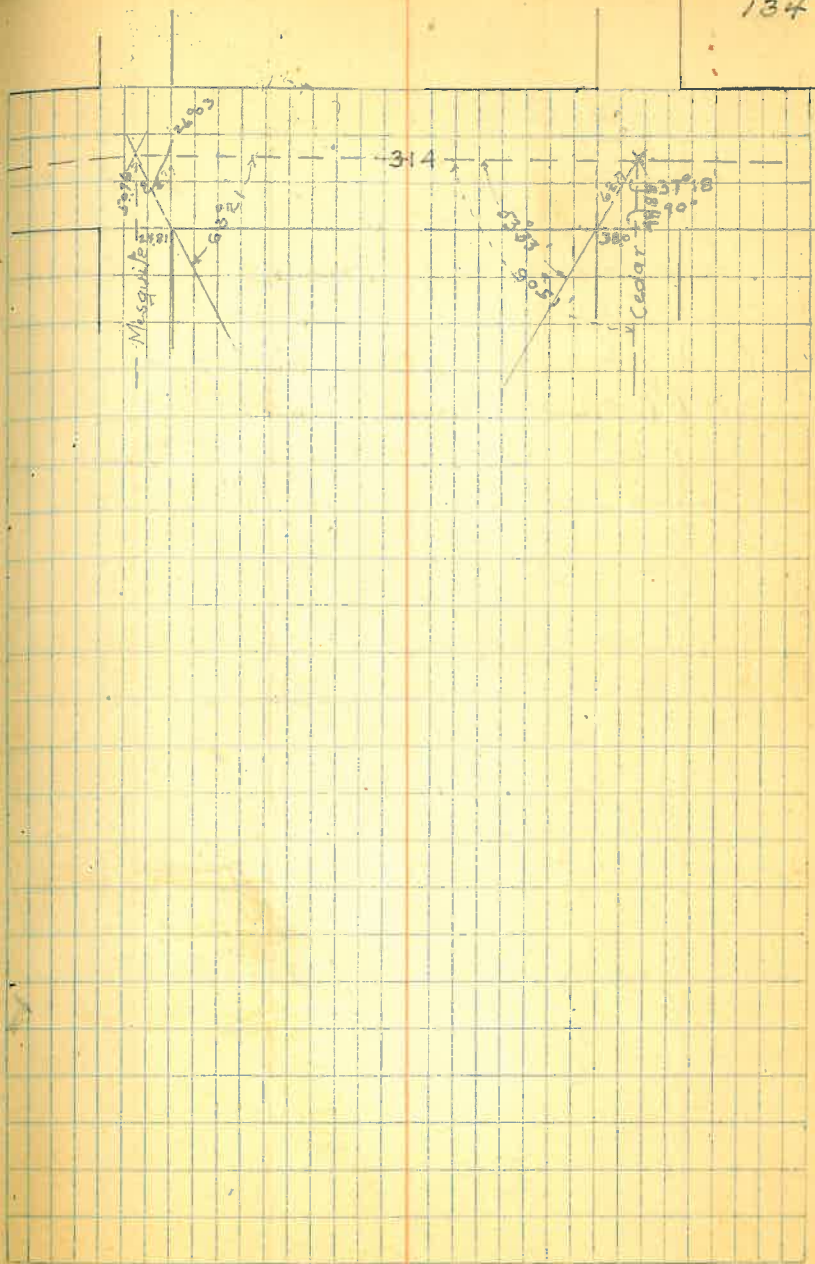
From N.W. cor. Era Mill site meas.  
along north line of Hackney (Bone)  
428.90 ft. to intersection point  
in Broad St.N.E. cor. Sol. Wick. is 30.10 south  
West end Bracke Bldg. = 0.52 south.angle S.E.W. - Broad St. Meander line  
(Pendelton) with N. line Bone St. =  $99^{\circ}10'$ 



Rec. Distances along Cedar St.

Broad to Pine 303.5 (303.6) fm.

Pine to Willow, 265.43 fm.





James B. Towle and wife  
to James Bracco & Constante Giacomo

Reg. at SE cor of lot 1, - thence N<sup>45</sup>  
along west side Broad St 55.4 ft,  
thence south westerly 105 ft. m. o. l.  
to a pt. on westerly line of said  
lot 1, thence south easterly along  
west line lot 1. - 45.3 ft. to Bone St.  
thence easterly along Bone St.  
102.3 ft. to pt. of Reg. p.

also

Reg. at a pt. on north side Bone  
St. 102.3 ft. from south east cor.  
Bl. 89, thence westerly along Bone  
83 ft. m. o. l. to T.P.W. & V.C. & N.R.R.  
thence northerly along R of W. 52.1 ft.  
thence easterly parallel to Bone  
80 ft. m. o. l. to westerly boundary  
thence south easterly 41.3 ft. to p. o. b.

Sept 1 - 1904

B. 9 - 208

Home Mutual Investment Co.  
to De Qin Foo & De Cuan Foo

Reg. at a pt. on east side of Broad  
St. 25 ft. southerly from intersection  
of Bone & Broad at the northeast  
cor of said lot - thence southerly  
along Broad St. 11 ft.; thence  
easterly 17.6 ft.; thence southerly along  
Broad St. 19 ft.; thence westerly  
parallel with Bone 75 ft.; thence  
northerly parallel with Broad 30 ft.  
thence easterly parallel with Bone  
60 ft. to p. o. b.

Febr 24 - 1913

B 21 p - 137

Also R. Lucas & wife & others  
to De Qin Foo

Reg. at a pt. 60 ft. westerly from  
north east cor. Bl. 88, thence southerly  
parallel with Broad 55 ft. thence  
westerly parallel with Bone 25 ft.;  
thence northerly parallel with  
Broad 55 ft.; thence easterly  
along Bone St. (?) to this place  
of Reg.

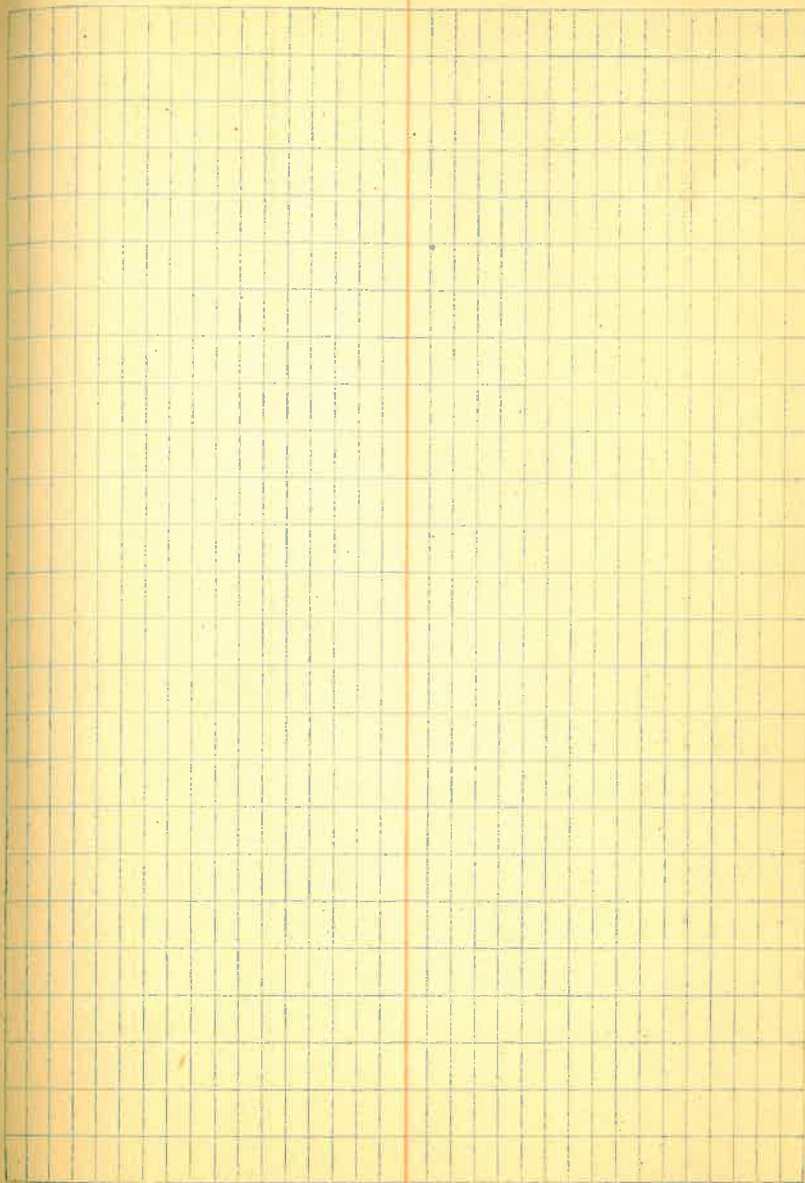
March 12 - 1913

B 21 - p. 146

139

Town of Celabe  
to G.V. & N-RR.

140





143

## Globe Cemetery

Set over stake 1. - (Tri pt,  
and from E. face smaller smoke  
stake Turn R.  $193^{\circ}40'$  to Course 1.

0. -

Stake 1 POT

$$\frac{116}{4.20}$$
2. R.  $188^{\circ}44'$ 

72. -

Jan 30 - 31

Stake 1. - Start of road

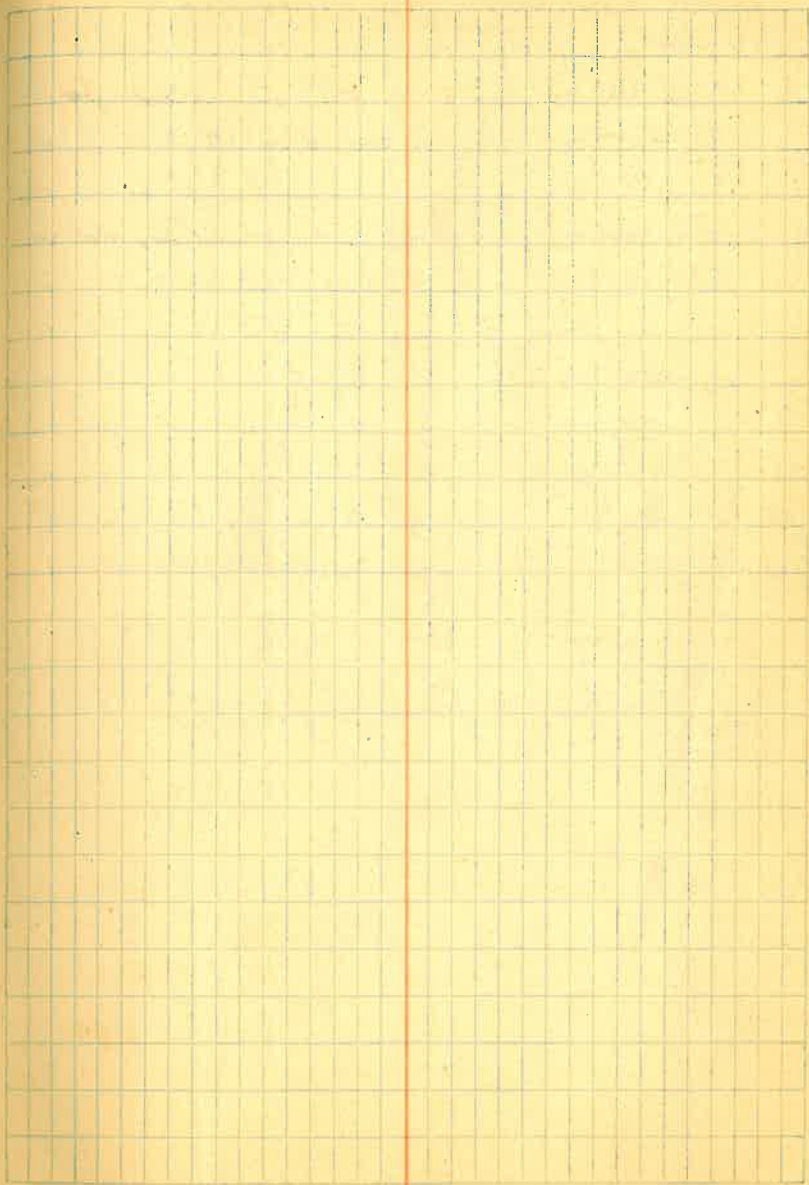
 $8.74^{\circ}45' E$  Mean.

Stake out side fence

Survey of Street in Bl. 97  
G.T. (For deed to same) and  
Additional ground needed for  
widening said street.

From Survey notes and map by Ed. Stewart

Mar. - 29 - 34.





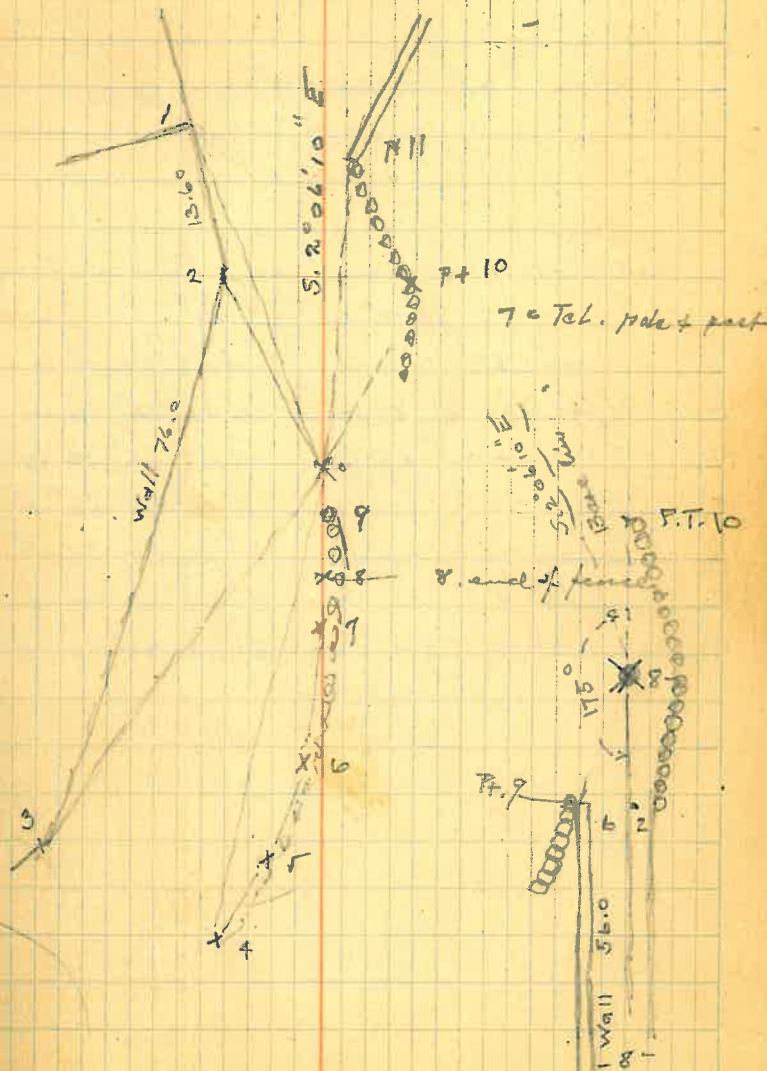
N 2° 06' 10" W.

Base line = 100 ft

Transit at S. end pt. Sight on N. end pt. B.R.

	Tr.	to pt.	Dist.	Angle	Direction
1	Δ	L	12° 40'	Tr. 5	N 14° 46' 10" W
2	-	L	17° 04'	to 2	25.20 N 19° 10' 10" W
3	-	L	138° 22'	to 3	59.60 S 39° 31' 50" W
4	-	L	144° 29'	to 4	109.60 S 33° 24' 10" W
5	-	L	147° 32'	to 5	102.70 S 30° 21' 50" W
6	-	L	151° 41'	to 6	86.15 S 26° 12' 50" W
7	-	L	155° 50'	to 7	69.70 S 22° 03' 50" W
8	-	L	155° 02'	to 8	55.60 S 22° 51' 50" W
9	-	L	157° 50'	to 9	22.65 S 20° 03' 50" W
10	-	R	19° 34'	to 10	31.0 N 17° 27' 50" E
11	-	R	1° 13'	to 11	60.50 N 0° 53' 10" W

Continued from page 97.

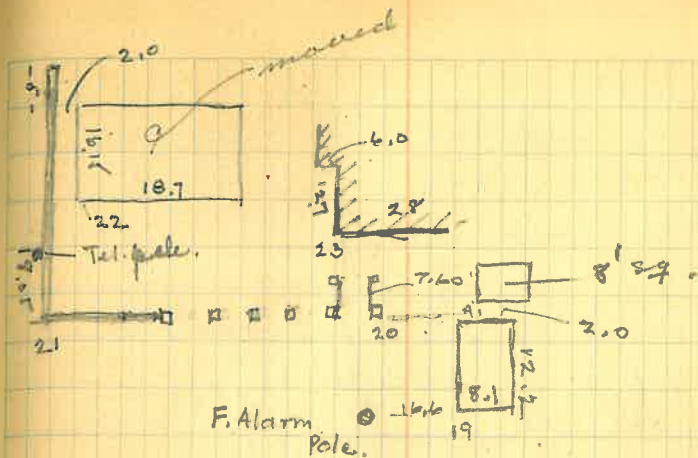
Improvement of street connecting Bailey  
with Marguile at Central School



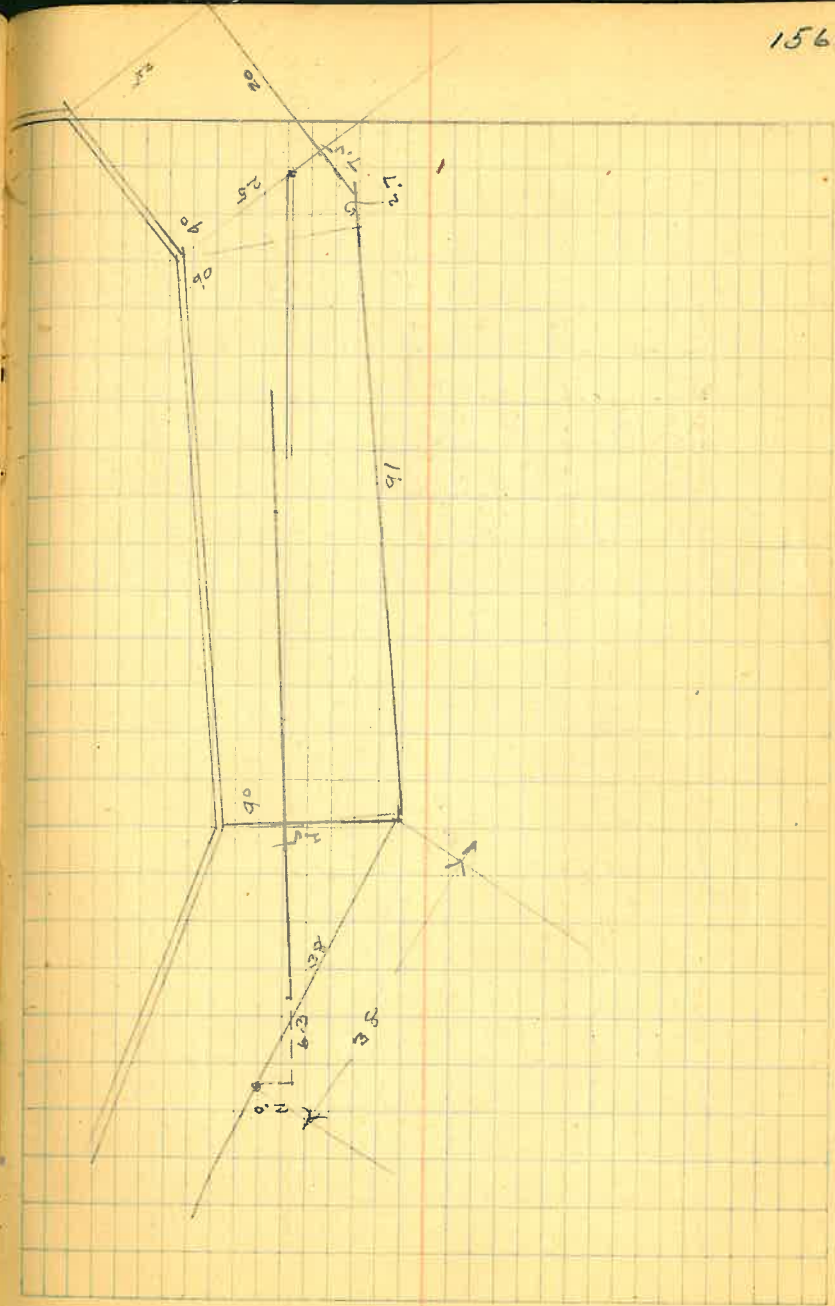


Tr. at N. end Base line Sight on S. end.  
 S.  $2^{\circ}06'10''$  E

19	L	$168^{\circ}13'$	35.10	N. $9^{\circ}40'50''$ E
20	L	$171^{\circ}16'$	48.35	N. $1^{\circ}37'50''$ E
21	R	$143^{\circ}40'$	61.60	N. $38^{\circ}26'10''$ W
22	R	$152^{\circ}55'$	75.85	N. $29^{\circ}11'10''$ W
23	R	$177^{\circ}44'$	62.50	N. $4^{\circ}22'10''$ W
24	R	$138^{\circ}06'$	100.65	N. $44^{\circ}00'10''$ W



Pt. 21 00  
 wall { 11.5  
 17.6  
 24.5  
 30.2  
 34.8  
 pt. 20, 39.7





June 14-42

Survey of west portion of Lot 1 A<sup>u</sup>  
 in Bl. 97-G.T. to be exchanged by  
 J. H. Williams Jr. to City of Globe for street  
 purpose to connect Cross street  
 with Central School road, and  
 said City of Globe to deed to said  
 J. H. Williams that portion of West  
 Bailey street adjoining said lot  
 between Willow street Cross street,

Continued from Surveys - pages  
 97 to 100 - and 117 to 120. -

J. H. Williams Jr. June 14-42. -

159

$$\begin{array}{r} 179.60 \\ 89.18 \\ \hline 90.42 \end{array}$$

$$\begin{array}{r} 54.18 \\ 35 \\ \hline 89.18 \end{array}$$

Iron Mang. (E.S. pt.) turn to left  
113° 38' 23"

Dist. to E.S. pt. for N.E. cor Bl. 97  
is 232.06 - station 0.3 west of  
iron in place.

Ret over iron and turn Iron pt.  
at Mang. 113° 38'

$$\begin{array}{r} 1.24 \\ \hline 58 \\ 26^{\circ} 10' \\ \hline 52.05 \end{array}$$

$$\begin{array}{r} 60.41 \\ 11.48 \\ \hline 59.17 \end{array}$$

$$\begin{array}{r} 100. \\ 5^{\circ} 20' \\ \hline 99.57 \end{array}$$

$$\begin{array}{r} 5.06 \\ 00 \\ \hline 5.06 \end{array}$$

Line of fence to S.

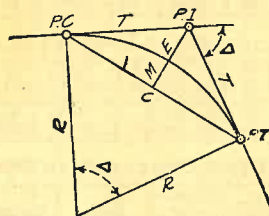
$$\begin{array}{r} 172.44 \\ 00 \\ \hline 172.44 \end{array}$$

$$\begin{array}{r} 172.44 \\ 389.53 \\ \hline 561.97 \end{array}$$

$$\begin{array}{r} 10.14 \\ \hline 599.67 \end{array}$$


# DIETZGEN'S RAILROAD CURVE AND REDUCTION TABLES

Copyright, 1914, by Eugene Dietzgen Co., New York City



## CURVE FORMULAS

Radius= $R = \frac{50}{\sin \frac{D}{2}}$  (1) Degree of Curve= $D$  and  $\sin \frac{D}{2} = \frac{50}{R}$  (2)

Tangent= $T = R \tan \frac{\Delta}{2}$  (3) Length of Curve= $L = 100 \frac{\Delta}{D}$  (4)

Middle ordinate= $M = R(1 - \cos \frac{\Delta}{2})$  (5) =  $R \text{vers} \frac{\Delta}{2}$  (6)

External= $E = T \tan \frac{\Delta}{4}$  (7) =  $R + \cos \frac{\Delta}{2} - R$  (8) =  $R \text{exsec} \frac{\Delta}{2}$  (9)

Long Chord= $C = 2 R \sin \frac{\Delta}{2}$  (10)  $\Delta$  = Central Angle

## EXPLANATION AND USE OF TABLES

**Stations.**—Given P. I. = Sta. 161 + 60.35 to find Sta. of P. C. and P. T.  $\Delta = 62^{\circ} 10'$   $D = 8^{\circ} 20'$ . From Table IV for  $1^{\circ}$  curve  $T = 3454.1$  and  $\div 8\frac{1}{2} = 414.49$  ft. From Table V correction = .36 or  $T = 414.85$  ft. P. C. = Sta. P. I. -  $T = 157 + 45.50$ . Also from (4)  $L = 746.00$  and P. T. = Sta. P. C. +  $L = 164 + 91.50$ .

**Offsets.**—Tangent offsets vary (approximately) directly with  $D$  and with square of the distance. Thus tangent offset for Sta. 158 on above curve is 2.16 ft. found as follows. From Table III tangent offset for 100 ft. = 7.27 ft. Distance = 158 - Sta. P. C. = 54.50, hence offset = 7.27  $(54.50 \div 100)^2 = 2.16$  ft. Also square of any distance divided by twice the radius equals (approximately) the distance from tangent to curve. Thus  $(54.50)^2 \div (2 \times 688.26) = 2.16$  ft.

**Deflections.**—Deflection angle =  $\frac{1}{2} D$  for 100 ft.,  $\frac{1}{4} D$  for 50 ft., etc. For c ft. = (in minutes)  $.3 \times C \times D^2$  or = defl. for 1 ft. from Table III  $\times C$ . For Sta. 158 of above curve =  $.3 \times 54.5 \times 8\frac{1}{2} = 136.2'$  or  $2^{\circ} 16.2'$ , or =  $2.50 \times 54.5 = 136.2'$  from Table III. For Sta. 159 deflection angle =  $2^{\circ} 16.2' + 8^{\circ} 20' \div 2 = 6^{\circ} 26.2'$ , etc.

**Externals.**—May be found in similar manner to tangents. Thus E for curve above is 91.37. For from Table IV for  $1^{\circ}$  curve  $E = 960.6$  for  $8^{\circ} 20' = 960.6 \div 8\frac{1}{2} = 91.27$  and from Table V correction = .10 or  $E = 91.37$  ft. Or suppose  $\Delta = 32^{\circ}$  and E is measured and found to be 42 ft. What is D? From Table IV  $E = 230.9$  and  $+42 = 5.5$  or  $D = 5^{\circ} 30'$ .



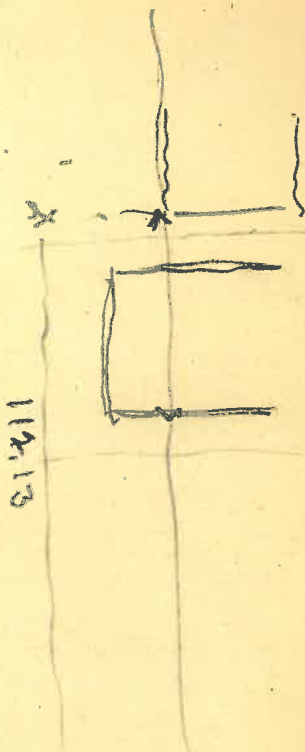
mail ~~5.01~~ 5.01 - my P. Hill + Mesq  
and 0.06 E of Copper rivet

Miss Haines' wall is 2.4 E of base of Hill  
cut is 8.26 in Reedy St

252.9  
2.4  

---

228.9



289  
 3  
 16  
 399  
 4994  
 7990  
 85307



Top N.E. cor. wall

10995  
 20.000  
 11.12  
 10995  
 20.000  
 11.12  
 10995  
 20.000  
 11.12

Wall st.  
 N. 35° 38' W.  
 S. 72° 26' W.



N. 83° 12' W. 380.9  
 13556

Top N.E. cor. wall  
 S. 28° 56' E. 21.81

B 41 p 36

City ordinance 280 & 281  
 Year 1921 - in July

380.90  
 372.23  
 8.67

280.90  
 91.33  
 372.23

83.12  
 39.08  
 44.04

