

H./W. 60-70.

K & E
REG. U. S. PAT. OFF.

COLLEGE FIELD BOOK

360C

PROPERTY OF
CITY OF GLOBE

HAMMES #1

NAME _____

CLASS _____ COURSE _____

120

Meandered Base points by State
state H/W Dept.

	H/W. Depart ment.	North	East
	Center City incorporation.	00	00
pt. 1	35+84.89		
	313.11 N.38°56'10" W		
pt. 2	32+71.78 Hackney		
	566.32 N.36°11' W		
pt. 3	27+05.46 Laundry		
	170.85 N.58°10'10" W		
pt. 4	25+34.61 Banker		
	294.78 N.74°28'30" W		
pt. 5	22+39.83		
	129.00 N.35°53'30" W		
pt. 6	21+10.83		
	100.00 N.15°05'30" W		
pt. 7	20+10.83		
	684.27 N.9°06' W		
pt. 8	13+26.56		
	596.57 N.13°02'30" W		
pt. 9	7+29.99 Mamm		
	539.65 N.0°28' ^E W		
pt. 10	1+90.34		
	190.34 N.12°42' W		
pt. 11	City limit.		

H/W. Dept tied to City Base pts.
City Map.

	Globe T.S.	North	East
	Center City Incorporation.	00	00
	N.21°42' W 79.20		
	Mon. 2 = 4	73.59	- 29.28
	N.39°07' W 900.0		
	Mon. N#3 (Laundry)	771.87	- 597.09
	N.57°57' N 400.0		
	Mon N#2	984.13	- 936.12
	N.11°27' W 420.0		
	Mon. 1 N. bound G.T.	1395.77	- 1019.50
	North Globe		
	N.20°11' W 986.10		
	Mon. 2	2321.32	- 1359.73
	N.12°51' E 309.60		
	Mon 3	2623.17	- 1290.88
	N.17°51' E 283.90		
	Mon. 4	2893.40	- 1203.86
	N.20°40' W		
	Mon 5		

H/WY DEPT TIED TO CITY BASE LINE POINTS

CITY MAP

GLOBE T.S.

Pt Bearing Dist

Mon No 4

S17°36'00"W 283.90

Mon No 3

S12°34'00"N 309.60

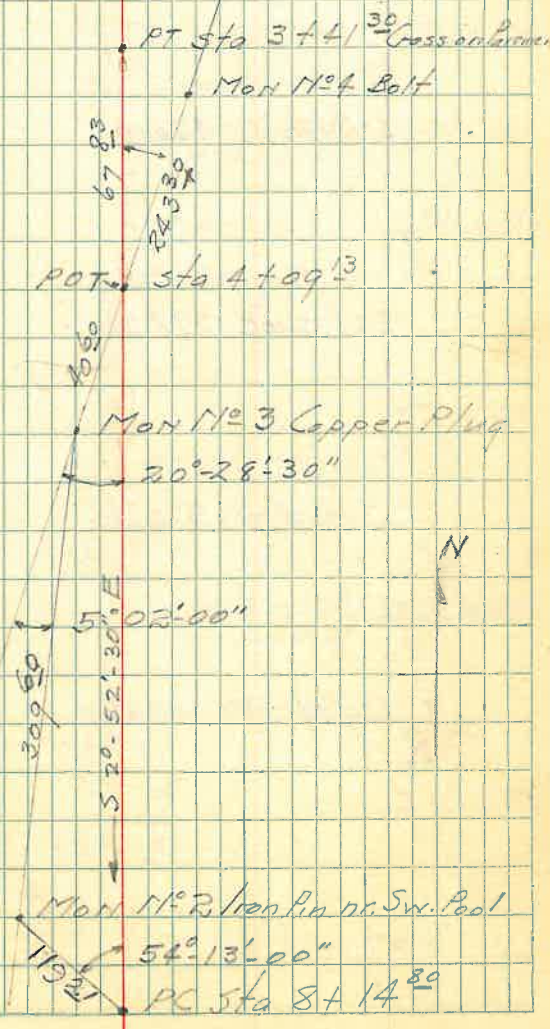
Mon No 2

S20°28'00"E 985.20

Mon No 1

H/WY Survey

Note: Bearings Calculated.



H/W DEPT. TIES TO CITY BASE LINE

CITY MAP

GLOBE T.S.

Pt. Bearing Dist.

Mon N^o 1

511°44'00" E 420.00

Mon N^o 2

557°35'00" E 398.20

Mon N^o 3

537°04'00" E 380.34

Mon N^o 3A

539°04'00" E 519.66

Mon N^o 4

POINTS 4/21/48

H/W SURVEY 4.

PT Sta 15+94¹⁰

Back Tap
S 70° 08' 00" E

291.35'

City Mon N^o 1 in Wash
3/4" Bolt in Conc B/ck

22° 22' 15"

PC Sta 19+67⁹³

Mon N^o 3 - Copper Plug
at Laundry.

120.48'

2° 47' 30"

PC Sta 23+30⁹²

S 75° 03' 00" E

PT Sta 23+45⁷¹

Mon N^o 3A Lead Plug
at Yuma St. N

Lead
S 36° 08' 30" E

01° 45' 15"

227.90'

PT Sta 27+74¹⁰

H/W DEPT. TIES TO CITY BASE LINE POINTS

CITY MAP

GLOBE T. S.

Pt. Bearing Dist.

Mon. N^o 4

Broad & Bailey Sts
S 21° 39' 00" E 533.20

Broad & Mesquit Sts
S 26° 17' 30" E 236.25

Broad & Cedar Sts
S 21° 47' 30" E 314.00

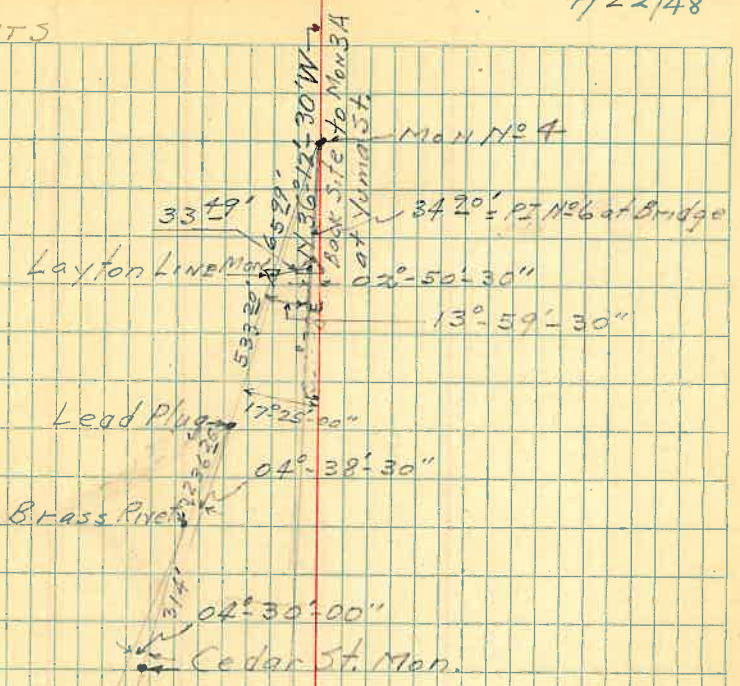
Broad & Oak Sts
S 21° 43' 40" E 326.70

Broad & Sycamore Sts
S 21° 46' 10" E 385.15

Broad & Cottonwood
S 21° 44' 50" E 346.13

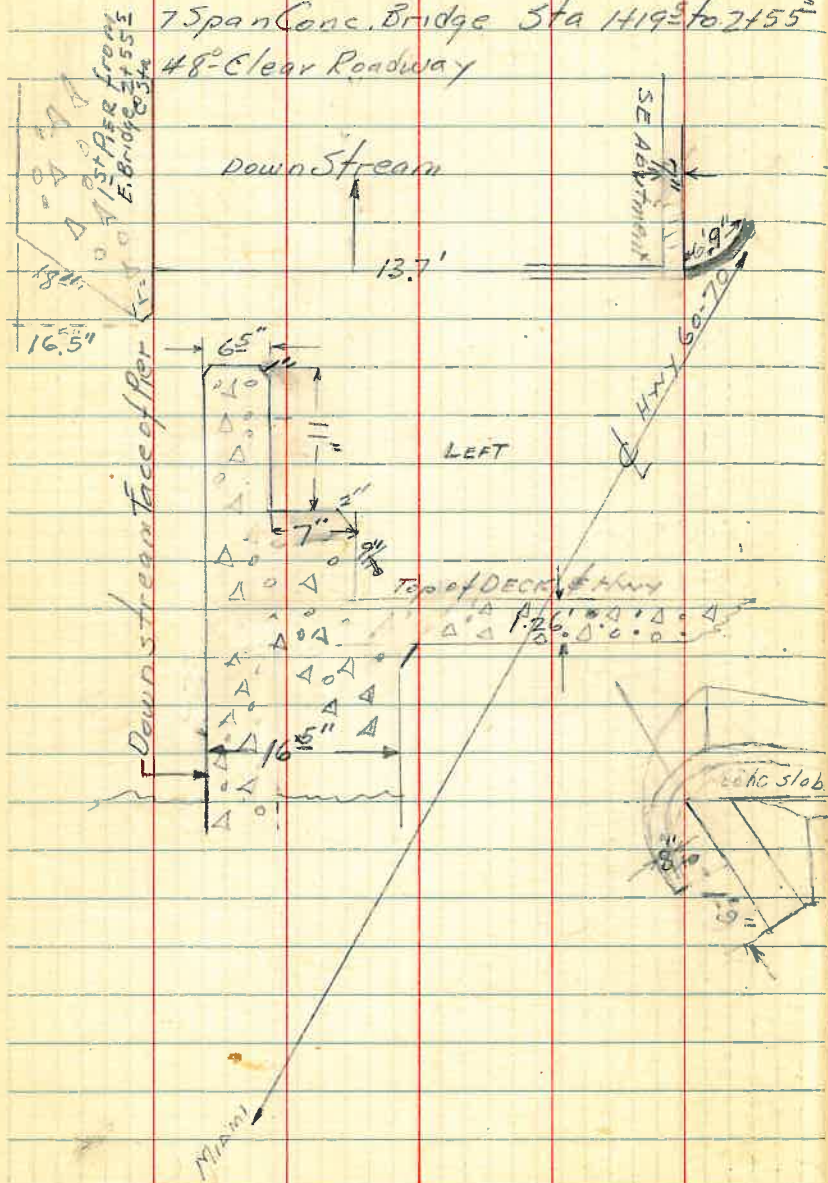
Broad East of Newton
S 41° 35' 10" E 292.14

4/22/48⁵¹



Sta 0+89.3 to 2+80

7 Span Conc. Bridge Sta 1+19.5 to 2+55.5
 48'-Clear Roadway



6/15/48
 A.H. Condon

