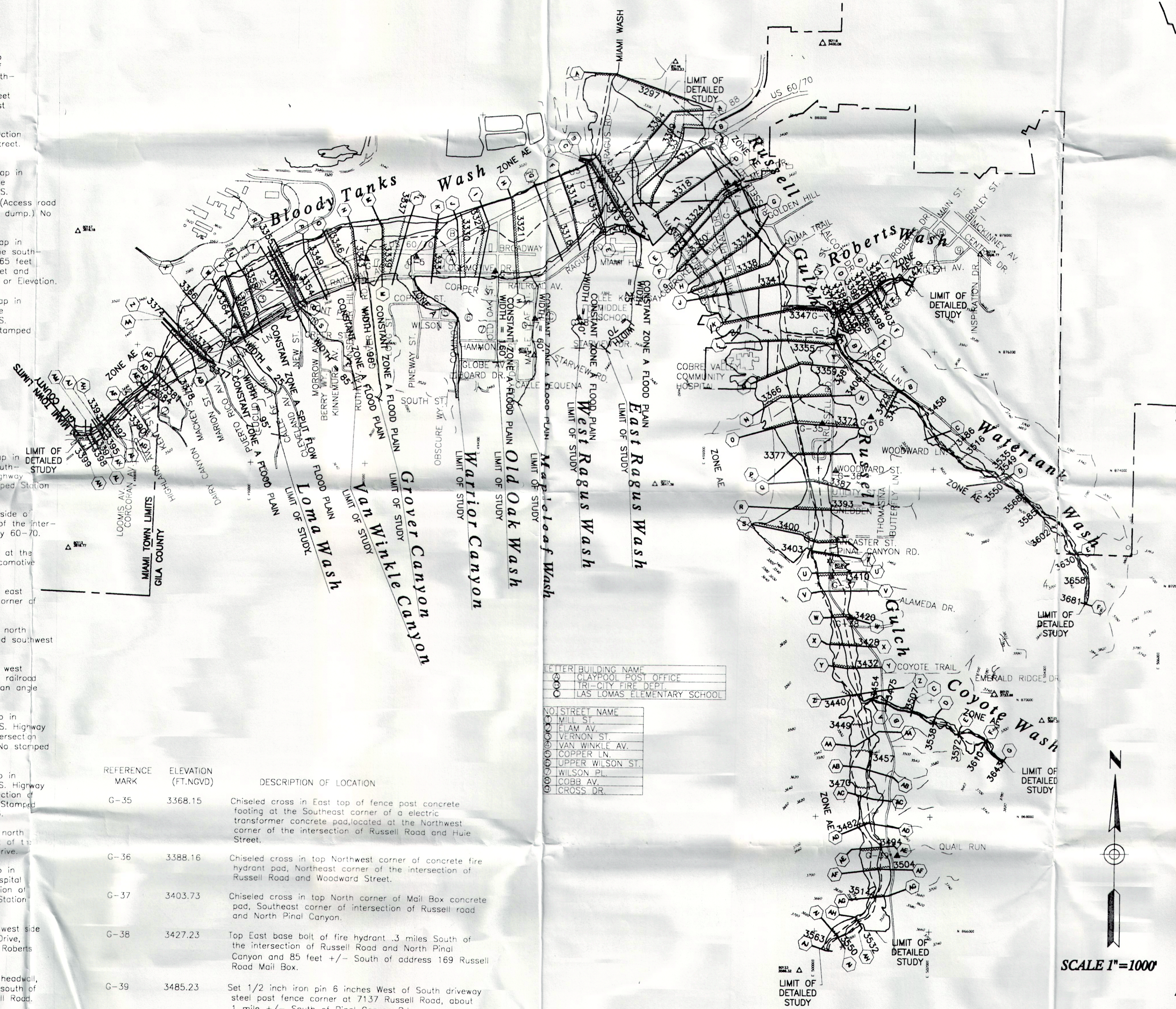


ELEVATION REFERENCE MARKS

NOTE: ALL ELEVATIONS ARE BASED ON NATIONAL GEODETIC VERTICAL DATUM OF 1929

REFERENCE MARK	ELEVATION (FT. NGVD)	DESCRIPTION OF LOCATION
RM-3M	3410.89	U.S. Coast and Geodetic survey brass cap in concrete sidewalk on southeast side of U.S. Highway 60-70, about 100 feet southwest of the intersection of Adonis Avenue and U.S. Highway 60-70, and about 3 feet southwest of the entrance to the old Post Office.
RM-4G	3539.93	Extreme top of fire hydrant at the intersection of Ruiz Canyon Road and Jesse Hayes Street. Established by U.S. Geological Survey.
G-1	3394.20	Arizona State Highway Department brass cap in top of southeast concrete headwall, at the northeast corner of the intersection of U.S. Highway 60-70 and Davis Canyon Road. (Access road to mine at the upstream edge of tailings dump.) No stamped Station or Elevation.
G-2	3384.60	Arizona State Highway Department brass cap in top of southeast concrete headwall, on the east side of U.S. Highway 60-70, about 65 feet northeast of the intersection of Kent Street and U.S. Highway 60-70. No stamped Station or Elevation.
G-3	3362.29	Arizona State Highway Department brass cap in top of northwest concrete headwall, at the northeast corner of the intersection of U.S. Highway 60-70 and Calle De Loma. No stamped Station or Elevation.
G-4	3339.44	Arizona State Highway Department brass cap in top of south concrete headwall, at the southwest corner of the intersection of U.S. Highway 60-70 and Grover Canyon Road. No stamped Station stamped Elevation 3338.50 1974.
G-5	3333.45	Chiseled cross in concrete sidewalk, south side of U.S. Highway 60-70, about 35 feet east of the intersection of Pineway Street and U.S. Highway 60-70.
G-6	3325.82	Chiseled cross in top of concrete headwall, at the northwest corner of the intersection of Locomotive Drive and Old Oak Street.
G-7	3358.70	Chiseled cross in top of concrete headwall, east side of Maple Leaf Street and southwest corner of Grade School yard.
G-8	3377.88	Chiseled cross in top of concrete headwall, north side access road to Junior High School and southwest corner of school yard.
G-9	3321.08	Chiseled cross in top of concrete headwall, west side Ragus Road, about 200 feet south of railroad track and north of Miami High School, at an angle point in Ragus Road.
G-10	3308.51	Arizona State Highway Department brass cap in top of concrete headwall, south side of U.S. Highway 60-70, at the southwest corner of the intersection of U.S. Highway 60-70 and Ragus Road. No stamped Station, stamped Elevation 3307.59 1974.
G-11	3324.74	Arizona State Highway Department brass cap in top of concrete headwall, south side of U.S. Highway 60-70, about 200 feet west of the intersection of U.S. Highway 60-70 and Russell Road. Stamped Station 140+70.53, Elevation 3324.13 1966.
G-12	3324.79	Chiseled cross in top of concrete headwall, north side of Hospital Drive, about 200 feet west of the intersection of Russell Road and Hospital Drive.
G-13	3325.06	Arizona State Highway Department brass cap in top of concrete headwall, north side of Hospital Drive, about 100 feet west of the intersection of Russell Road and Hospital Drive. Stamped Station 9+75, Elevation 3324.36 1966.
G-14	3377.55	Chiseled cross in top of concrete headwall, west side of private driveway, north side of Roberts Drive, about 100 feet east of the intersection of Roberts Drive and Russell Road.
G-15	3372.77	Chiseled cross in top of rock and concrete headwall, east side of Russell Road, about 300 feet south of the intersection of Roberts Drive and Russell Road.
G-16	3435.54	Chiseled cross in top of rock and concrete headwall, southwest side of County Dump Road, about 1250 feet southeast of the intersection of Russell Road and County Dump Road.

REFERENCE MARK	ELEVATION (FT. NGVD)	DESCRIPTION OF LOCATION
G-35	3368.15	Chiseled cross in East top of fence post concrete footing at the Southeast corner of a electric transformer concrete pad located at the Northwest corner of the intersection of Russell Road and Hue Street.
G-36	3388.16	Chiseled cross in top Northwest corner of concrete fire hydrant pad, Northeast corner of the intersection of Russell Road and Woodward Street.
G-37	3403.73	Chiseled cross in top North corner of Mail Box concrete pad, Southeast corner of intersection of Russell road and North Pinal Canyon.
G-38	3427.23	Top East base bolt of fire hydrant .3 miles South of the intersection of Russell Road and North Pinal Canyon and 85 feet +/- South of address 169 Russell Road Mail Box.
G-39	3485.23	Set 1/2 inch iron pin 6 inches West of South driveway steel post fence corner at 7137 Russell Road, about 1 mile +/- South of Pinal Canyon Rd.



FEDERAL EMERGENCY MANAGEMENT AGENCY

CITY OF GLOBE AND GILA COUNTY FLOOD INSURANCE STUDY

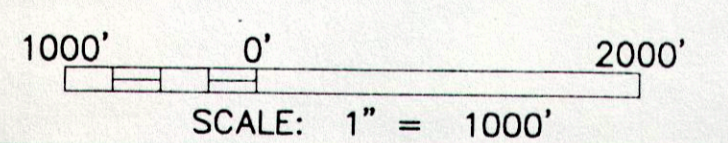
GILA COUNTY, ARIZONA
CONTRACT NO. EMF-1998-CO-0081

LEGEND

- 100-YR FLOODPLAIN BOUNDARY
- FLOODWAY BOUNDARY
- HYDRAULIC BASE LINE
- CROSS SECTION
- ELEVATION REFERENCE MARK
- BASE FLOOD ELEVATIONS
- ZONE DESIGNATIONS

NOTES

Vertical Datum Equation:
NGVD1929 + 2.072 Ft.(0.6317 m) = NAVD1988.



DIBBLE & ASSOCIATES
CONSULTING ENGINEERS
Since 1962

DESIGN	BY	DATE
DESIGN	FEB	11-99
DESIGN CHK	BLJ	11.99.6.00
PLANS	BLJ	11-99
PLANS CHK	BLJ	11.99.6.00

FLOODPLAIN AND FLOODWAY WORK MAP

SHEET 1 OF 2