

ARF-904

Consent Agenda Item  
4- I

Regular BOS Meeting

Meeting Date: 10/18/2011

Department: Elections Department

Presenter's Name:

Information

Request/Subject

Order adopting mapping alternative Plan A as the Gila County Supervisorial Redistricting Plan to be implemented and take effect upon preclearance by the Department of Justice. The new plan boundaries, including any election precinct boundary changes, shall become effective upon preclearance by the Department of Justice.

Background Information

The Gila County Redistricting Advisory Committee submitted alternative mapping ideas to the Board of Supervisors on August 15, 2011. On August 23, the Board discussed all ideas during a work session. On September 6, the Board determined which Supervisorial mapping alternatives would be taken out for a second round of public meetings. On September 20, 2011, the Board discussed all mapping alternatives, public comments, and other information received to date and began their evaluation of final mapping alternatives. The Board agreed that three Supervisorial District maps (Plans A, B, and C) would be considered for adoption. At the October 3, 2011 meeting, the Board unanimously adopted Plan A as the Gila County Supervisorial Redistricting Plan.

Evaluation

This Order provides an official record of the Board's action to adopt Plan A and acknowledges the adopted plan boundaries, as well as any election precinct boundary changes, shall become effective upon preclearance by the Department of Justice.

Conclusion

The Board has the ultimate responsibility and authority to approve the Supervisorial District redistricting plans for the County and adopted Plan A in a regular meeting on October 3, 2011. A preclearance submission will now be made to the Department of Justice and this Order will become a part of that submission.

Recommendation

The Elections Director recommends the Board approve the Order adopting Plan A as the Gila County Supervisorial Redistricting plan.

Suggested Motion

Approval of an Order adopting Plan A as the Gila County Supervisorial Redistricting Plan and directing that the new Plan boundaries, including any election precinct boundary changes, shall become effective upon preclearance by the Department of Justice.

---

Attachments

A.R.S. 11-212

Order Adopting Supervisorial Redistricting Plan

Supervisorial Redistricting Plan A Map

Supervisorial Redistricting Plan A Report

When recorded deliver to:

**Marian Sheppard, Chief Deputy Clerk  
Gila County Board of Supervisors**



---

**ORDER of the Board of Supervisors regarding  
adoption of a new Supervisorial Redistricting Plan**

**DO NOT REMOVE**

This is part of the official document

## ORDER

**WHEREAS**, pursuant to Arizona Revised Statute §11-212 the Gila County Board of Supervisors shall meet at the county seat on or before December 1 following the release of the United States decennial census data and divide the county into three Supervisorial Districts which shall be numbered, respectfully, District One, District Two, and District Three;

**WHEREAS**, the Gila County Board of Supervisors shall define the boundaries and limits of each district and make the division equal or with not more than ten percent difference in population;

**WHEREAS**, the Board of Supervisors adopted Redistricting Guidelines;

**WHEREAS**, a Redistricting Advisory Committee selected by the Gila County Board of Supervisors collected public input, consolidated and reviewed public input, and selected alternative supervisorial redistricting plan and presented them to the Board on August 15, 2011;

**WHEREAS**, on September 20, 2011 the Board discussed mapping alternatives, public comments, and other information received and determined acceptable mapping alternatives; and

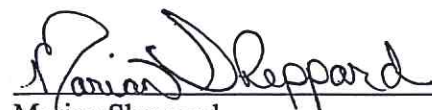
**WHEREAS**, on October 3, 2011, three alternative supervisorial redistricting plans were reviewed by the Gila County Board of Supervisors and the Board of Supervisors unanimously agreed to adopt supervisorial Plan A.

**NOW, THEREFORE**, we, the Gila County Board of Supervisors do hereby Order as follows:

1. That by virtue of the authority set forth in Arizona Revised Statute §11-212 the Gila County Board of Supervisors adopts Plan A as the Gila County Supervisorial Redistricting plan, as set forth in the Plan A documents attached hereto and incorporated herein by reference.
2. That the adopted supervisorial district boundaries as reflected in Plan A attached shall be implemented and take effect upon preclearance by the Department of Justice.
3. That any election precinct boundary changes required as a result of the adoption of Plan A supervisorial district boundaries take effect upon preclearance by the Department of Justice.

**ADOPTED** at Globe, Gila County, Arizona, on this 18<sup>th</sup> day of October 2011.

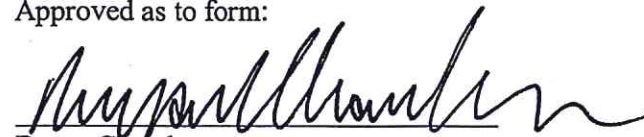
Attest:

  
Marian Sheppard  
Chief Deputy Clerk of the Board

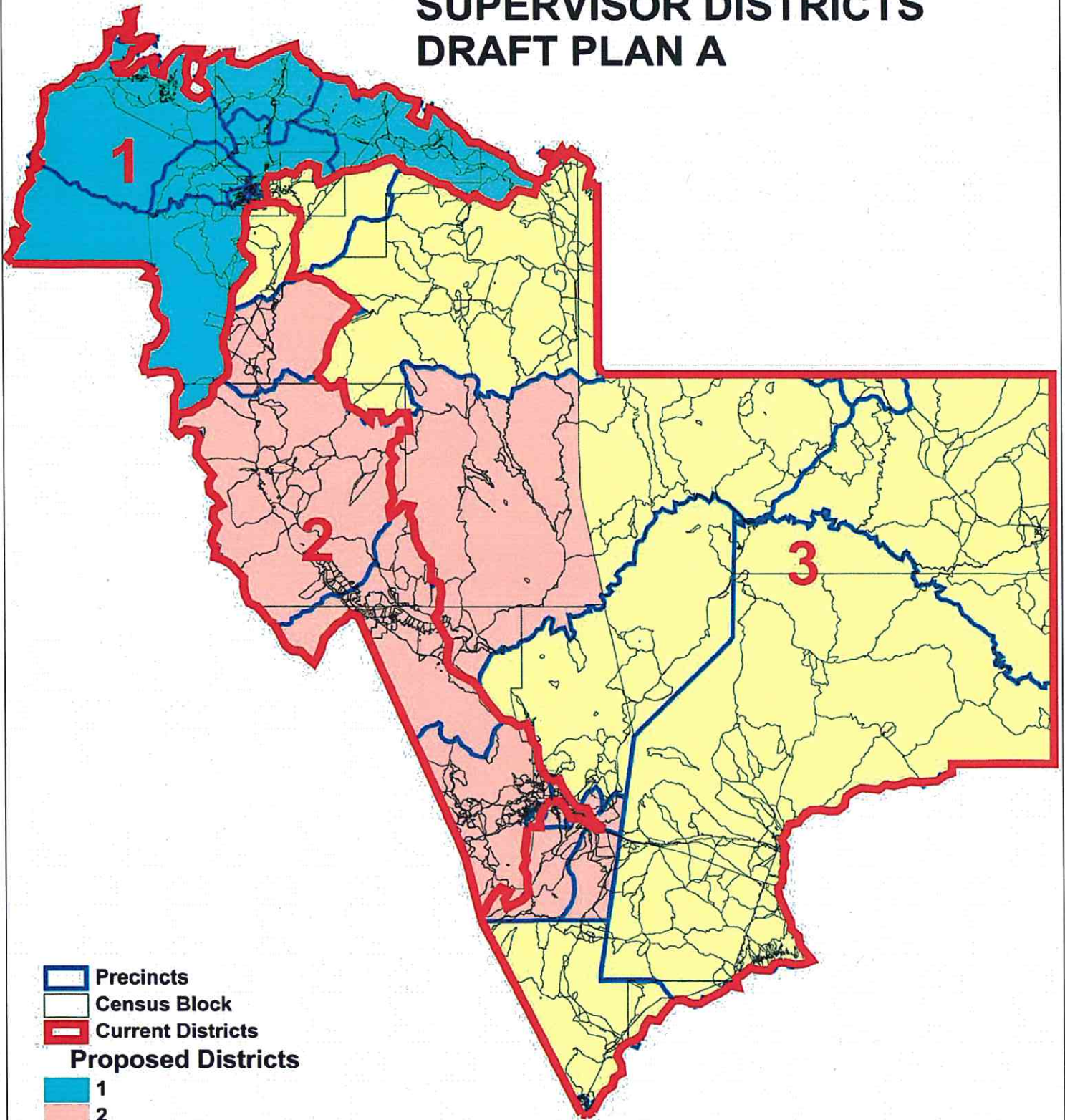
**GILA COUNTY BOARD OF SUPERVISORS**







  
Tommie C. Martin, Chair

Approved as to form:

  
Bryan Chambers  
Chief Deputy County Attorney

# GILA COUNTY SUPERVISOR DISTRICTS DRAFT PLAN A



-  Precincts
-  Census Block
-  Current Districts
- Proposed Districts**
-  1
-  2
-  3



Whispering Pines

Zane Grey

Pine-Strawberry

**GILA COUNTY  
SUPERVISOR DISTRICTS  
DRAFT PLAN A  
PAYSON AREA DETAIL**

Payson #5

Payson #8

Payson #4






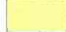
Star Valley

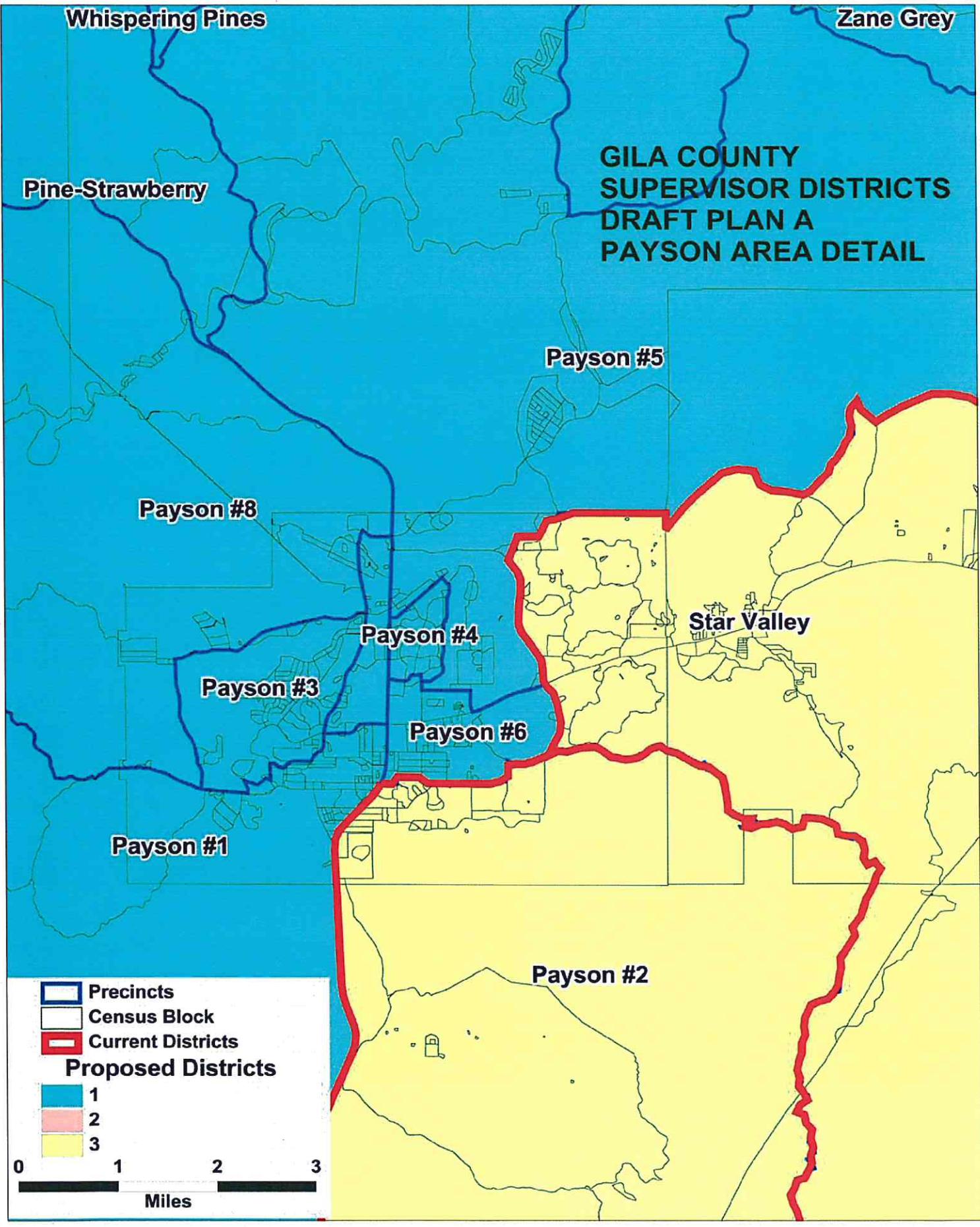
Payson #3

Payson #6

Payson #1

Payson #2

-  Precincts
-  Census Block
-  Current Districts
- Proposed Districts**
-  1
-  2
-  3



Globe #1

# GILA COUNTY SUPERVISOR DISTRICTS DRAFT PLAN A GLOBE AREA DETAIL

Claypool #2

Miami #1

Central Heights

East Globe

Globe #2

Globe #8

Globe #3

Globe #4

Globe #5

Claypool #1



Globe #6

Globe #7

Globe #11

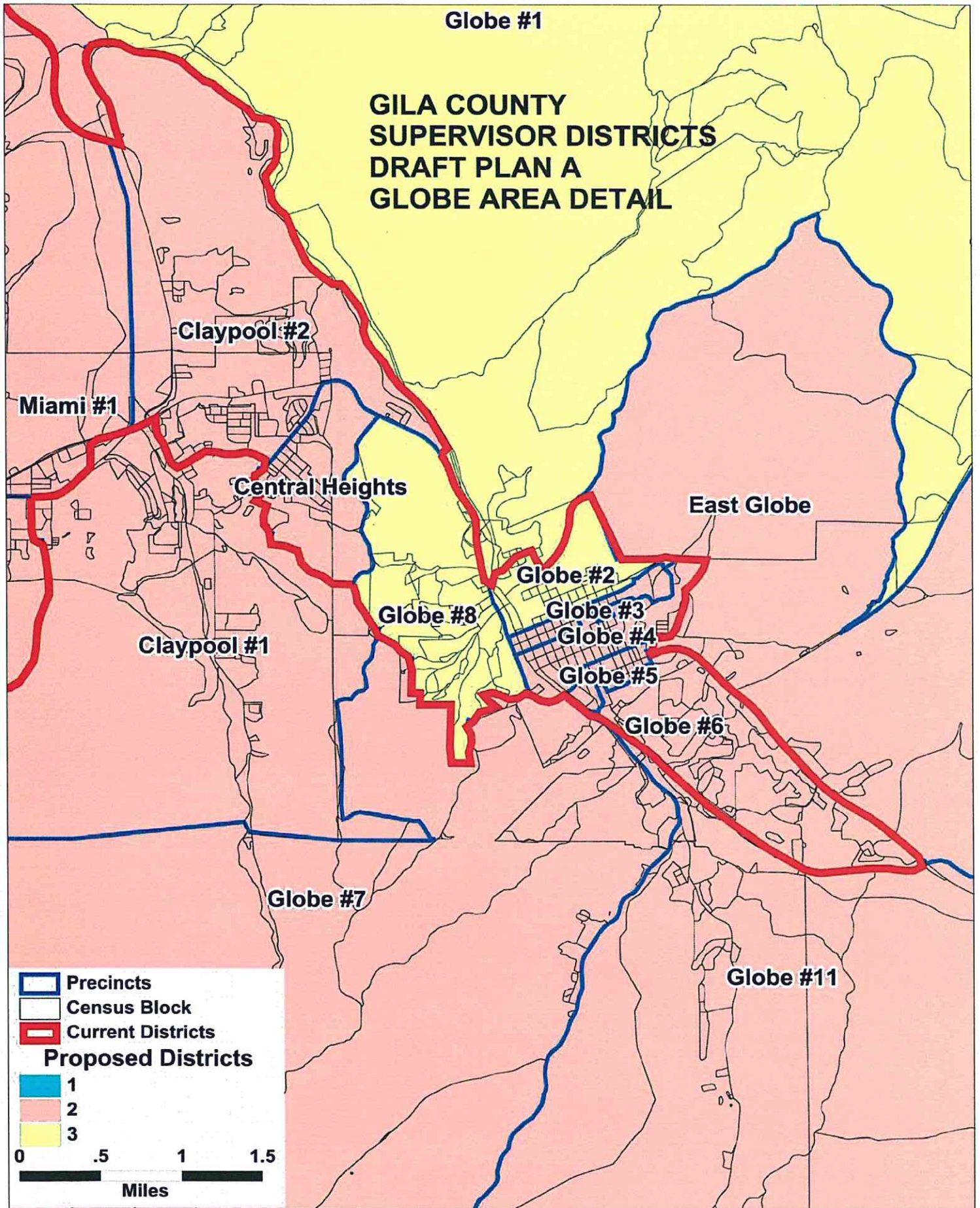
-  Precincts
-  Census Block
-  Current Districts

### Proposed Districts

-  1
-  2
-  3

0 .5 1 1.5

Miles



**GILA COUNTY SUPERVISORIAL DISTRICTS  
TOTAL POPULATION BY RACE AND HISPANIC ORIGIN  
DRAFT PLAN A**

<u>Number:</u>	<u>District 1</u>	<u>District 2</u>	<u>District 3</u>	<u>Total, All Districts</u>
Hispanic, of any race	1,467	5,236	2,885	<b>9,588</b>
Non-Hispanic White	16,025	11,908	7,365	<b>35,298</b>
Non-Hispanic Black	87	126	35	<b>248</b>
Non-Hispanic American Indian	357	667	6,951	<b>7,975</b>
Non-Hispanic Asian	114	130	77	<b>321</b>
Non-Hispanic Hawaiian	22	10	7	<b>39</b>
Non-Hispanic other race	20	27	19	<b>66</b>
Non-Hispanic two or more races	13	17	32	<b>62</b>
<b>Total Population</b>	<b>18,105</b>	<b>18,121</b>	<b>17,371</b>	<b>53,597</b>
<u>Percent:</u>				
Hispanic, of any race	8.10%	28.89%	16.61%	<b>17.89%</b>
Non-Hispanic White	88.51%	65.71%	42.40%	<b>65.86%</b>
Non-Hispanic Black	0.48%	0.70%	0.20%	<b>0.46%</b>
Non-Hispanic American Indian	1.97%	3.68%	40.01%	<b>14.88%</b>
Non-Hispanic Asian	0.63%	0.72%	0.44%	<b>0.60%</b>
Non-Hispanic Hawaiian	0.12%	0.06%	0.04%	<b>0.07%</b>
Non-Hispanic other race	0.11%	0.15%	0.11%	<b>0.12%</b>
Non-Hispanic two or more races	0.07%	0.09%	0.18%	<b>0.12%</b>
<b>Total Percent</b>	<b>100.00%</b>	<b>100.00%</b>	<b>100.00%</b>	<b>100.00%</b>
Ideal Population	17,866	17,866	17,866	<b>Total deviation: 750 4.20%</b>
Total Population	18,105	18,121	17,371	
Numeric deviation from Ideal Value	239	255	-495	
Percent deviation from Ideal Value	1.34%	1.43%	-2.77%	

Source: Census 2010 Redistricting Data (Public Law 94-171) Summary file, Arizona  
 Tabulation: Research Advisory Services, Inc., Phoenix AZ (602) 230-9580

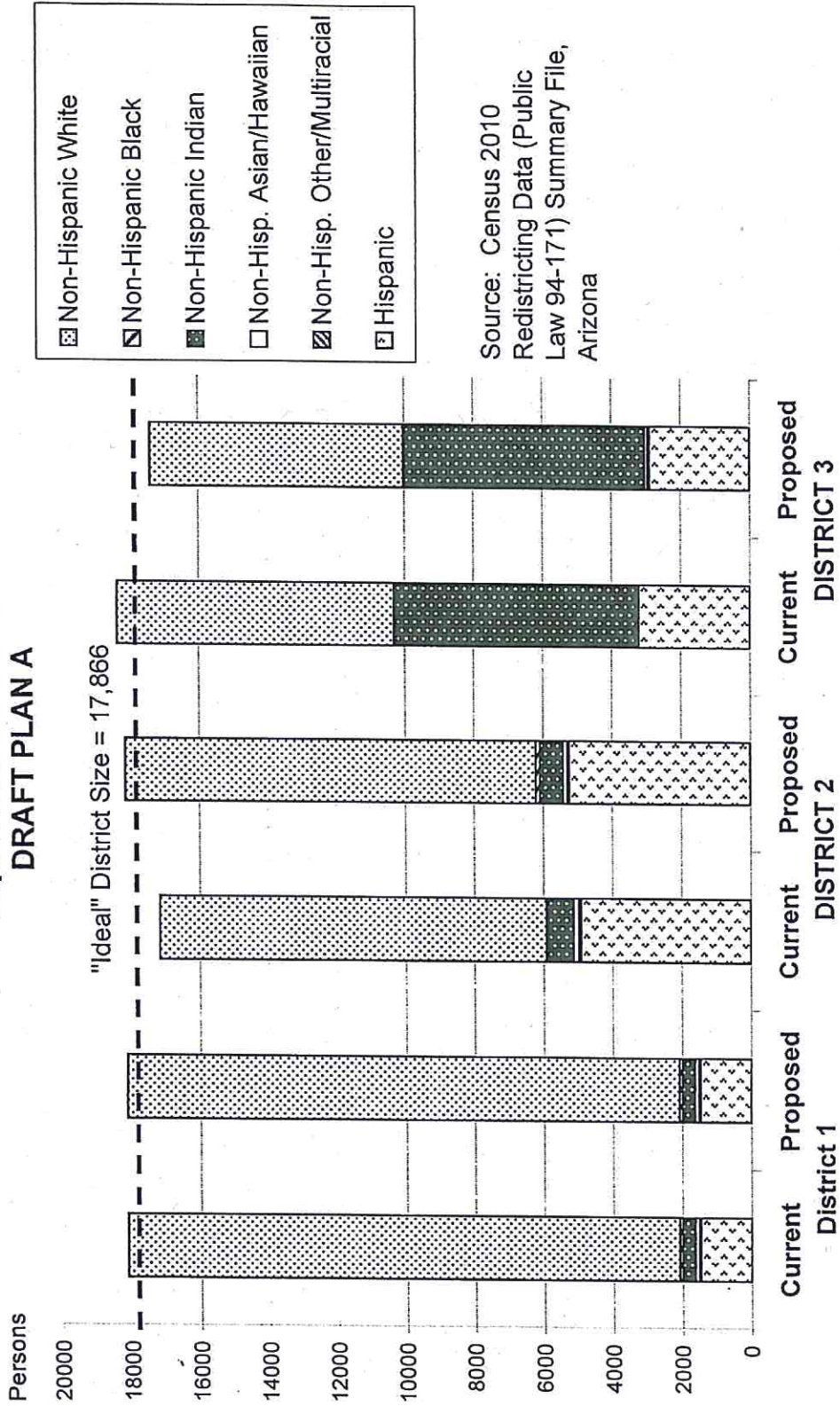


**GILA COUNTY SUPERVISORIAL DISTRICTS  
VOTING-AGE POPULATION BY RACE AND HISPANIC ORIGIN  
DRAFT PLAN A**

<b><u>Voting-Age Number:</u></b>	<b><u>District 1</u></b>	<b><u>District 2</u></b>	<b><u>District 3</u></b>	<b><u>Total, All Districts</u></b>
Hispanic, of any race	947	3,603	1,969	<b>6,519</b>
Non-Hispanic White	13,806	9,914	6,202	<b>29,922</b>
Non-Hispanic Black	47	101	23	<b>171</b>
Non-Hispanic American Indian	266	461	4,418	<b>5,145</b>
Non-Hispanic Asian	90	100	62	<b>252</b>
Non-Hispanic Hawaiian	17	7	6	<b>30</b>
Non-Hispanic other race	9	19	16	<b>44</b>
Non-Hispanic two or more races	11	13	19	<b>43</b>
<b><i>Voting-Age Population</i></b>	<b>15,193</b>	<b>14,218</b>	<b>12,715</b>	<b>42,126</b>
<b><u>Voting-Age Percent:</u></b>				
Hispanic, of any race	6.23%	25.34%	15.49%	<b>15.48%</b>
Non-Hispanic White	90.87%	69.73%	48.78%	<b>71.03%</b>
Non-Hispanic Black	0.31%	0.71%	0.18%	<b>0.41%</b>
Non-Hispanic American Indian	1.75%	3.24%	34.75%	<b>12.21%</b>
Non-Hispanic Asian	0.59%	0.70%	0.49%	<b>0.60%</b>
Non-Hispanic Hawaiian	0.11%	0.05%	0.05%	<b>0.07%</b>
Non-Hispanic other race	0.06%	0.13%	0.13%	<b>0.10%</b>
Non-Hispanic two or more races	0.07%	0.09%	0.15%	<b>0.10%</b>
<b><i>Voting-Age Percent</i></b>	<b>100.00%</b>	<b>100.00%</b>	<b>100.00%</b>	<b>100.00%</b>

Source: Census 2010 Redistricting Data (Public Law 94-171) Summary file, Arizona  
 Tabulation: Research Advisory Services, Inc., Phoenix AZ (602) 230-9580

**Race and Origin Composition of Current and Proposed Gila County  
Supervisory Districts  
DRAFT PLAN A**



Source: Census 2010  
Redistricting Data (Public  
Law 94-171) Summary File,  
Arizona

**GILA COUNTY SUPERVISORIAL DISTRICTS  
DRAFT PLAN A**

	<b>Current</b>	<b>Proposed Plan</b>	<b>Change</b>
Population, District 1	18,105	18,105	0
Population, District 2	17,151	18,121	970
Population, District 3	18,341	17,371	-970
Population deviation, District 1	239	239	
Population deviation, District 2	-715	255	
Population deviation, District 3	475	-495	
Percent deviation, District 1	1.34%	1.34%	
Percent deviation, District 2	-4.00%	1.43%	
Percent deviation, District 3	2.66%	-2.77%	
Total plan deviation, number	1,190	750	
Total plan deviation, percent	6.66%	4.20%	
Percent voting-age Hispanic, District 1	6.23%	6.23%	0.00%
Percent voting-age Hispanic, District 2	24.88%	25.34%	0.46%
Percent voting-age Hispanic, District 3	16.45%	15.49%	-0.96%
Percent V-A Non-Hispanic Native American, District 1	1.75%	1.75%	0.00%
Percent V-A Non-Hispanic Native American, District 2	3.63%	3.24%	-0.39%
Percent V-A Non-Hispanic Native American, District 3	32.77%	34.75%	1.98%
Percent V-A Non-Hispanic Black, District 1	0.31%	0.31%	0.00%
Percent V-A Non-Hispanic Black, District 2	0.46%	0.71%	0.25%
Percent V-A Non-Hispanic Black, District 3	0.46%	0.18%	-0.28%
Percent voting-age total minority residents, District 1	9.13%	9.13%	0.00%
Percent voting-age total minority residents, District 2	30.16%	30.27%	0.11%
Percent voting-age total minority residents, District 3	50.28%	51.22%	0.94%

11-212. Supervisorial districts

The board of supervisors shall meet at the county seat on or before December 1 following the release of the United States decennial census data and divide the county into three or five supervisorial districts as provided in this article, which shall be numbered, respectively, districts one, two and three or districts one, two, three, four and five. The board shall define the boundaries and limits of each district and make the division equal or with not more than ten per cent difference in population. The county may redistrict as often as deemed necessary between each United States decennial census.