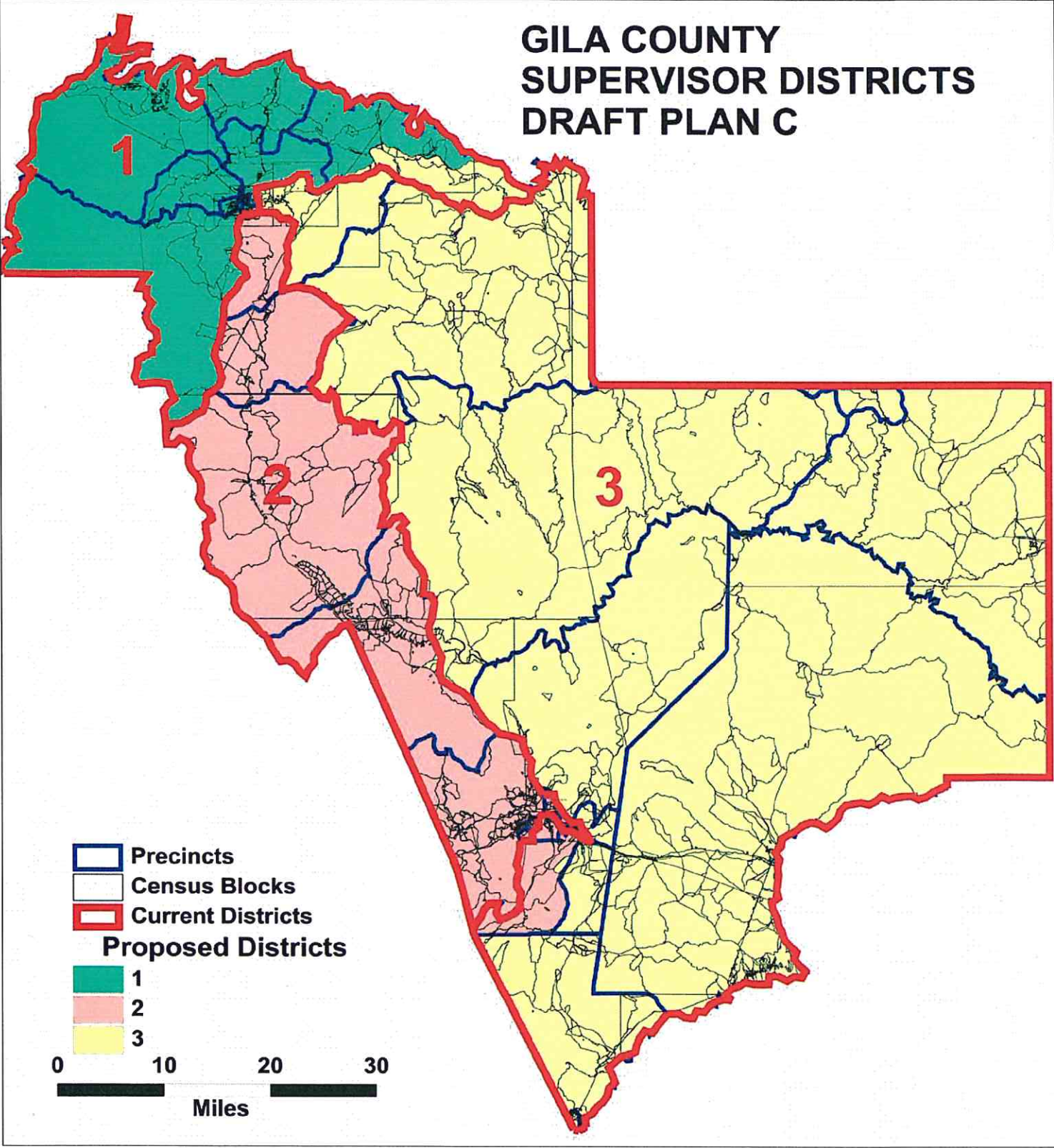








# GILA COUNTY SUPERVISOR DISTRICTS DRAFT PLAN C



-  Precincts
-  Census Blocks
-  Current Districts
- Proposed Districts**
-  1
-  2
-  3

0 10 20 30  
Miles

Pine-Strawberry

GILA COUNTY  
SUPERVISOR DISTRICTS  
DRAFT PLAN C  
PAYSON AREA DETAIL

Payson #5

Payson #8

Payson #4


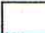




Star Valley

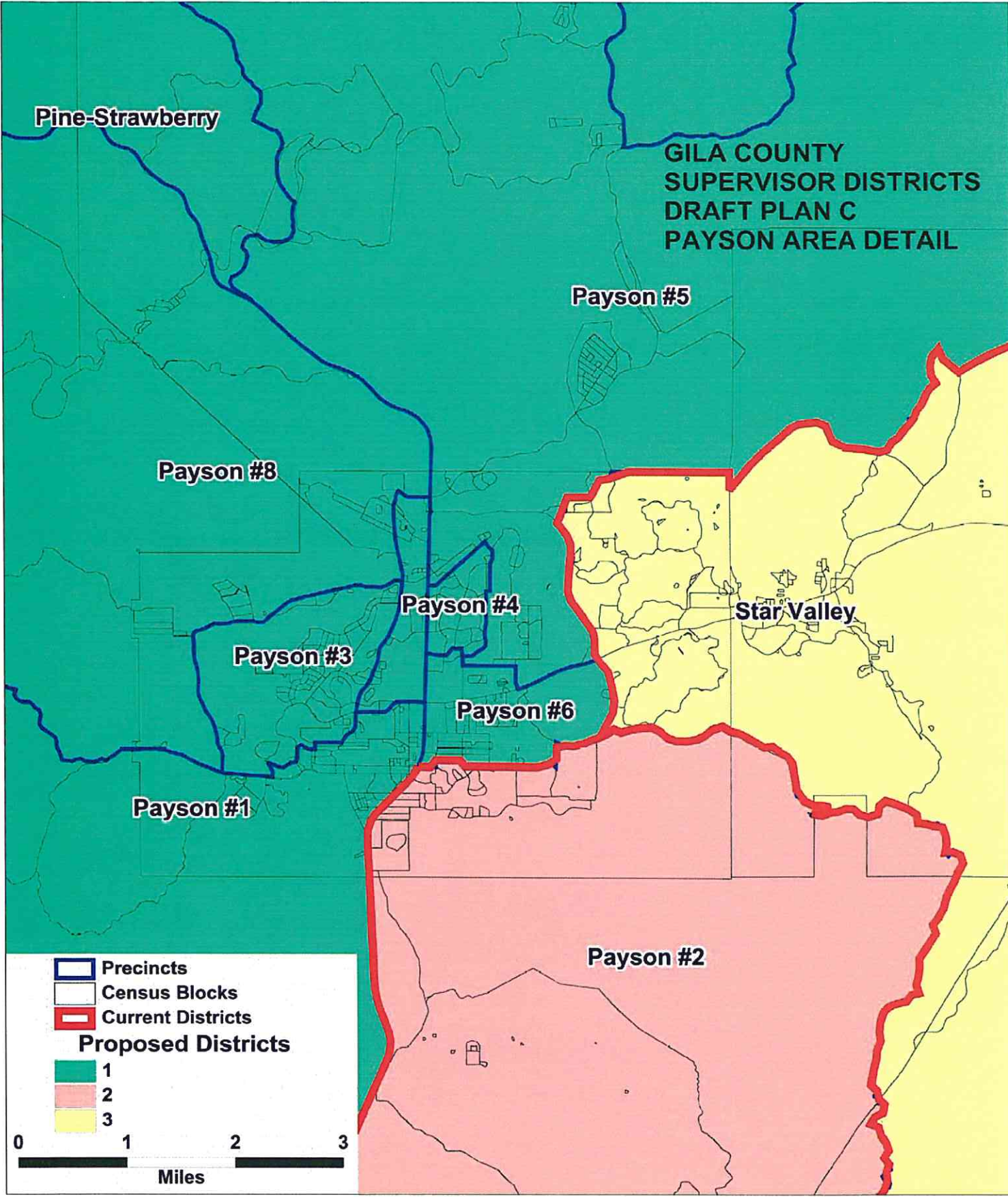
Payson #3

Payson #6

Payson #1

Payson #2

-  Precincts
-  Census Blocks
-  Current Districts
- Proposed Districts**
-  1
-  2
-  3



Globe #1

# GILA COUNTY SUPERVISOR DISTRICTS DRAFT PLAN C GLOBE AREA DETAIL

Claypool #2

Miami #1

Central Heights

East Globe

Claypool #1

Globe #8

Globe #2

Globe #3


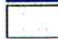

Globe #4



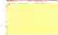
Globe #5

Globe #6

Globe #7

Globe #11

-  Precincts
-  Census Blocks
-  Current Districts
- Proposed Districts**

-  1
-  2
-  3



**GILA COUNTY SUPERVISORIAL DISTRICTS  
TOTAL POPULATION BY RACE AND HISPANIC ORIGIN  
DRAFT PLAN C**

<b>Number:</b>	<b>District 1</b>	<b>District 2</b>	<b>District 3</b>	<b>Total, All Districts</b>
Hispanic, of any race	1,463	5,178	2,947	9,588
Non-Hispanic White	15,799	11,807	7,692	35,298
Non-Hispanic Black	83	93	72	248
Non-Hispanic American Indian	356	686	6,933	7,975
Non-Hispanic Asian	114	128	79	321
Non-Hispanic Hawaiian	22	11	6	39
Non-Hispanic other race	20	31	15	66
Non-Hispanic two or more races	13	21	28	62
<b>Total Population</b>	<b>17,870</b>	<b>17,955</b> <i>- 914</i>	<b>17,772</b> <i>+ 914</i> <i>18686</i>	<b>53,597</b>
<b>Percent:</b>				
Hispanic, of any race	8.19%	28.84%	16.58%	17.89%
Non-Hispanic White	88.41%	65.76%	43.28%	65.86%
Non-Hispanic Black	0.46%	0.52%	0.41%	0.46%
Non-Hispanic American Indian	1.99%	3.82%	39.01%	14.88%
Non-Hispanic Asian	0.64%	0.71%	0.44%	0.60%
Non-Hispanic Hawaiian	0.12%	0.06%	0.03%	0.07%
Non-Hispanic other race	0.11%	0.17%	0.08%	0.12%
Non-Hispanic two or more races	0.07%	0.12%	0.16%	0.12%
<b>Total Percent</b>	<b>100.00%</b>	<b>100.00%</b>	<b>100.00%</b>	<b>100.00%</b>
Ideal Population	17,866	17,866	17,866	<b>Total deviation:</b> <b>183</b> <b>1.02%</b>
Total Population	17,870	17,955	17,772	
Numeric deviation from Ideal Value	4	89	-94	
Percent deviation from Ideal Value	0.02%	0.50%	-0.52%	

Source: Census 2010 Redistricting Data (Public Law 94-171) Summary file, Arizona

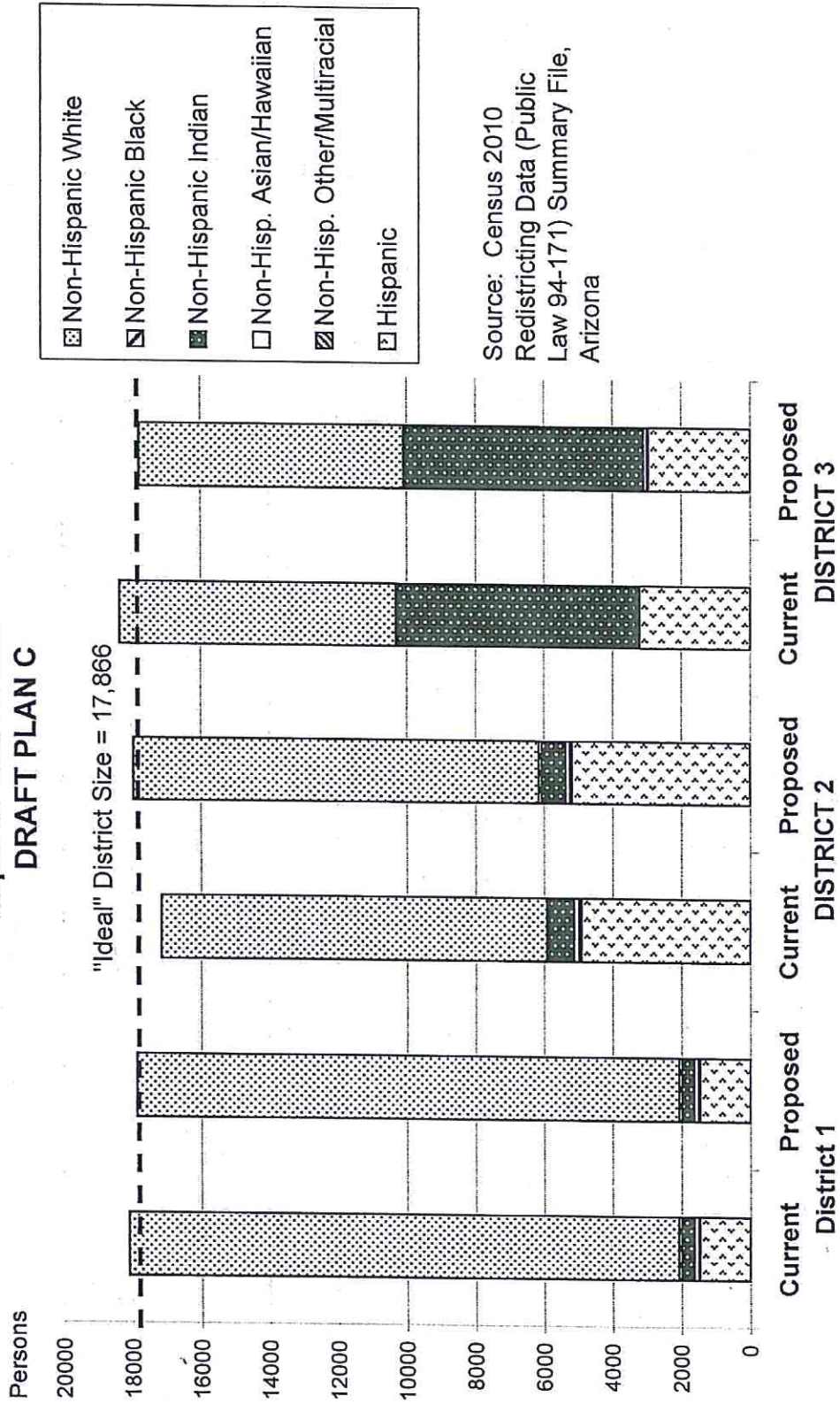
Tabulation: Research Advisory Services, Inc., Phoenix AZ (602) 230-9580

**GILA COUNTY SUPERVISORIAL DISTRICTS  
VOTING-AGE POPULATION BY RACE AND HISPANIC ORIGIN  
DRAFT PLAN C**

<u>Voting-Age Number:</u>	<u>District 1</u>	<u>District 2</u>	<u>District 3</u>	<u>Total, All Districts</u>
Hispanic, of any race	943	3,544	2,032	<b>6,519</b>
Non-Hispanic White	13,601	9,794	6,527	<b>29,922</b>
Non-Hispanic Black	46	69	56	<b>171</b>
Non-Hispanic American Indian	265	463	4,417	<b>5,145</b>
Non-Hispanic Asian	90	98	64	<b>252</b>
Non-Hispanic Hawaiian	17	8	5	<b>30</b>
Non-Hispanic other race	9	23	12	<b>44</b>
Non-Hispanic two or more races	11	15	17	<b>43</b>
<b><i>Voting-Age Population</i></b>	<b>14,982</b>	<b>14,014</b>	<b>13,130</b>	<b>42,126</b>
 <u>Voting-Age Percent:</u>				
Hispanic, of any race	6.29%	25.29%	15.48%	<b>15.48%</b>
Non-Hispanic White	90.78%	69.89%	49.71%	<b>71.03%</b>
Non-Hispanic Black	0.31%	0.49%	0.43%	<b>0.41%</b>
Non-Hispanic American Indian	1.77%	3.30%	33.64%	<b>12.21%</b>
Non-Hispanic Asian	0.60%	0.70%	0.49%	<b>0.60%</b>
Non-Hispanic Hawaiian	0.11%	0.06%	0.04%	<b>0.07%</b>
Non-Hispanic other race	0.06%	0.16%	0.09%	<b>0.10%</b>
Non-Hispanic two or more races	0.07%	0.11%	0.13%	<b>0.10%</b>
<b><i>Voting-Age Percent</i></b>	<b>100.00%</b>	<b>100.00%</b>	<b>100.00%</b>	<b>100.00%</b>

Source: Census 2010 Redistricting Data (Public Law 94-171) Summary file, Arizona  
 Tabulation: Research Advisory Services, Inc., Phoenix AZ (602) 230-9580

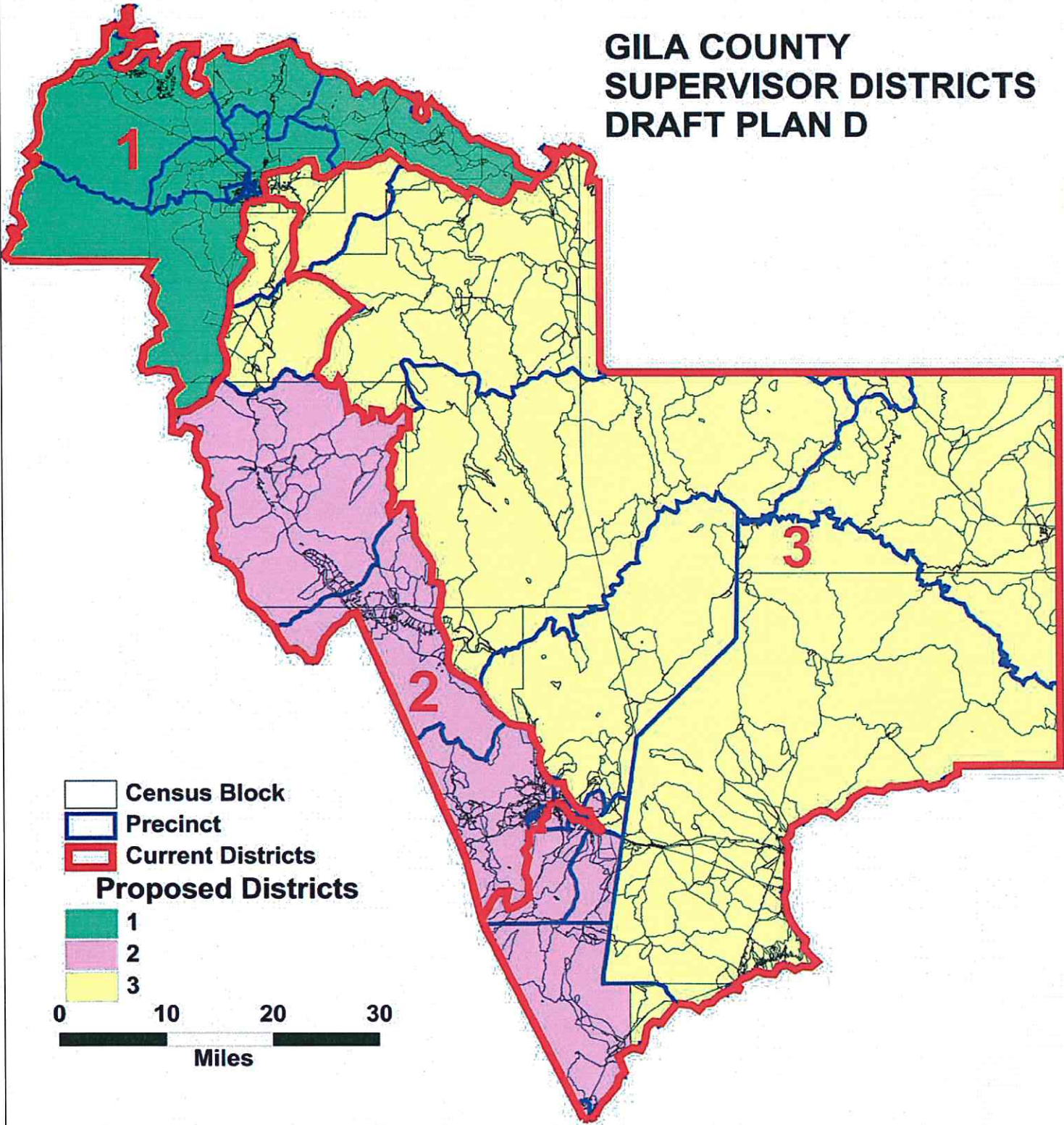
**Race and Origin Composition of Current and Proposed Gila County  
Supervisory Districts  
DRAFT PLAN C**





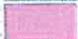



**GILA COUNTY SUPERVISORIAL DISTRICTS  
DRAFT PLAN C**

	<b>Current</b>	<b>Proposed Plan</b>	<b>Change</b>
Population, District 1	18,105	17,870	-235
Population, District 2	17,151	17,955	804
Population, District 3	18,341	17,772	-569
Population deviation, District 1	239	4	
Population deviation, District 2	-715	89	
Population deviation, District 3	475	-94	
Percent deviation, District 1	1.34%	0.02%	
Percent deviation, District 2	-4.00%	0.50%	
Percent deviation, District 3	2.66%	-0.52%	
Total plan deviation, number	1,190	183	
Total plan deviation, percent	6.66%	1.02%	
Percent voting-age Hispanic, District 1	6.23%	6.29%	0.06%
Percent voting-age Hispanic, District 2	24.88%	25.29%	0.41%
Percent voting-age Hispanic, District 3	16.45%	15.48%	-0.97%
Percent V-A Non-Hispanic Native American, District 1	1.75%	1.77%	0.02%
Percent V-A Non-Hispanic Native American, District 2	3.63%	3.30%	-0.33%
Percent V-A Non-Hispanic Native American, District 3	32.77%	33.64%	0.87%
Percent V-A Non-Hispanic Black, District 1	0.31%	0.31%	0.00%
Percent V-A Non-Hispanic Black, District 2	0.46%	0.49%	0.03%
Percent V-A Non-Hispanic Black, District 3	0.46%	0.43%	-0.03%
Percent voting-age total minority residents, District 1	9.13%	9.22%	0.09%
Percent voting-age total minority residents, District 2	30.16%	30.11%	-0.05%
Percent voting-age total minority residents, District 3	50.28%	50.29%	0.01%

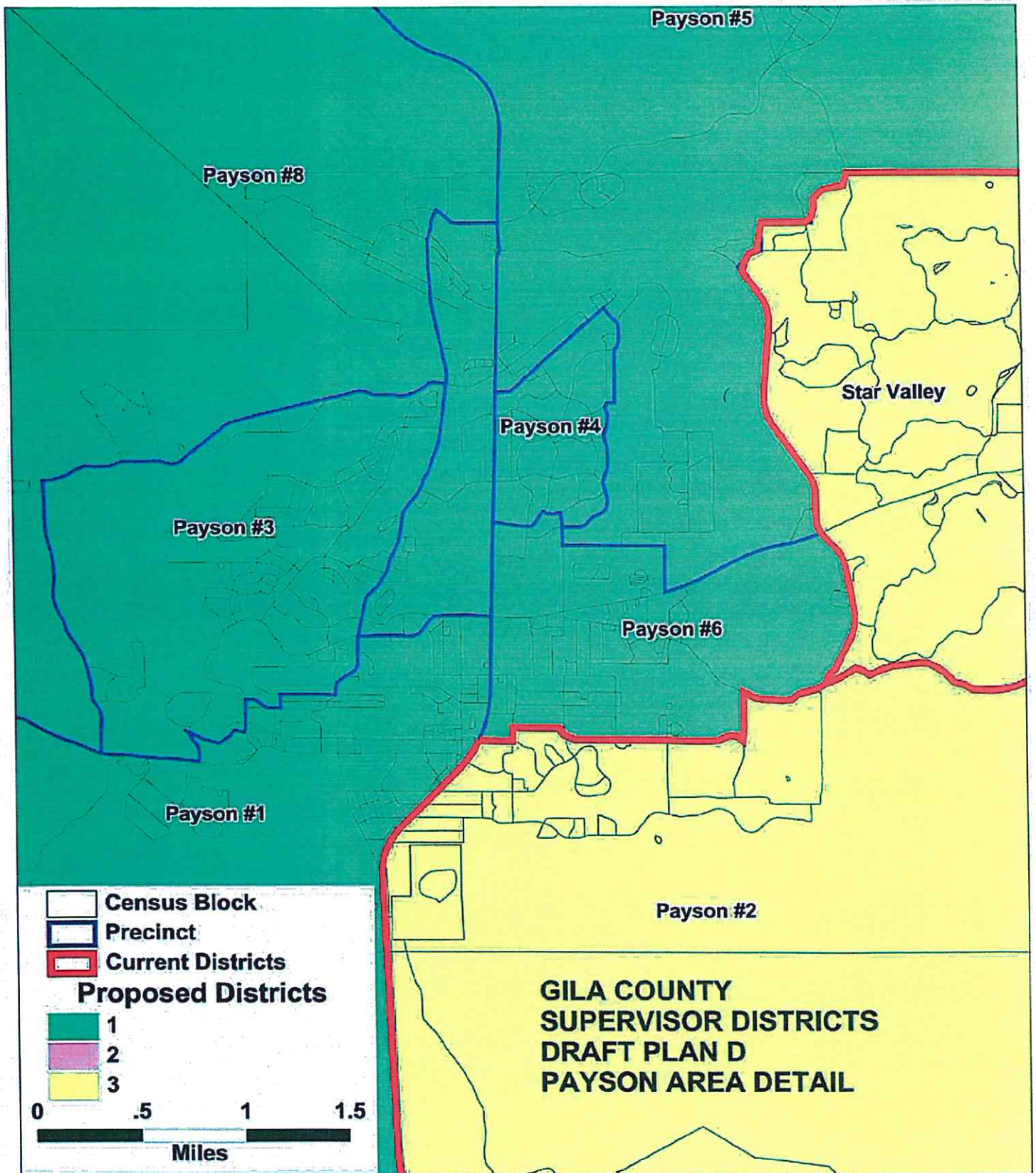
# GILA COUNTY SUPERVISOR DISTRICTS DRAFT PLAN D



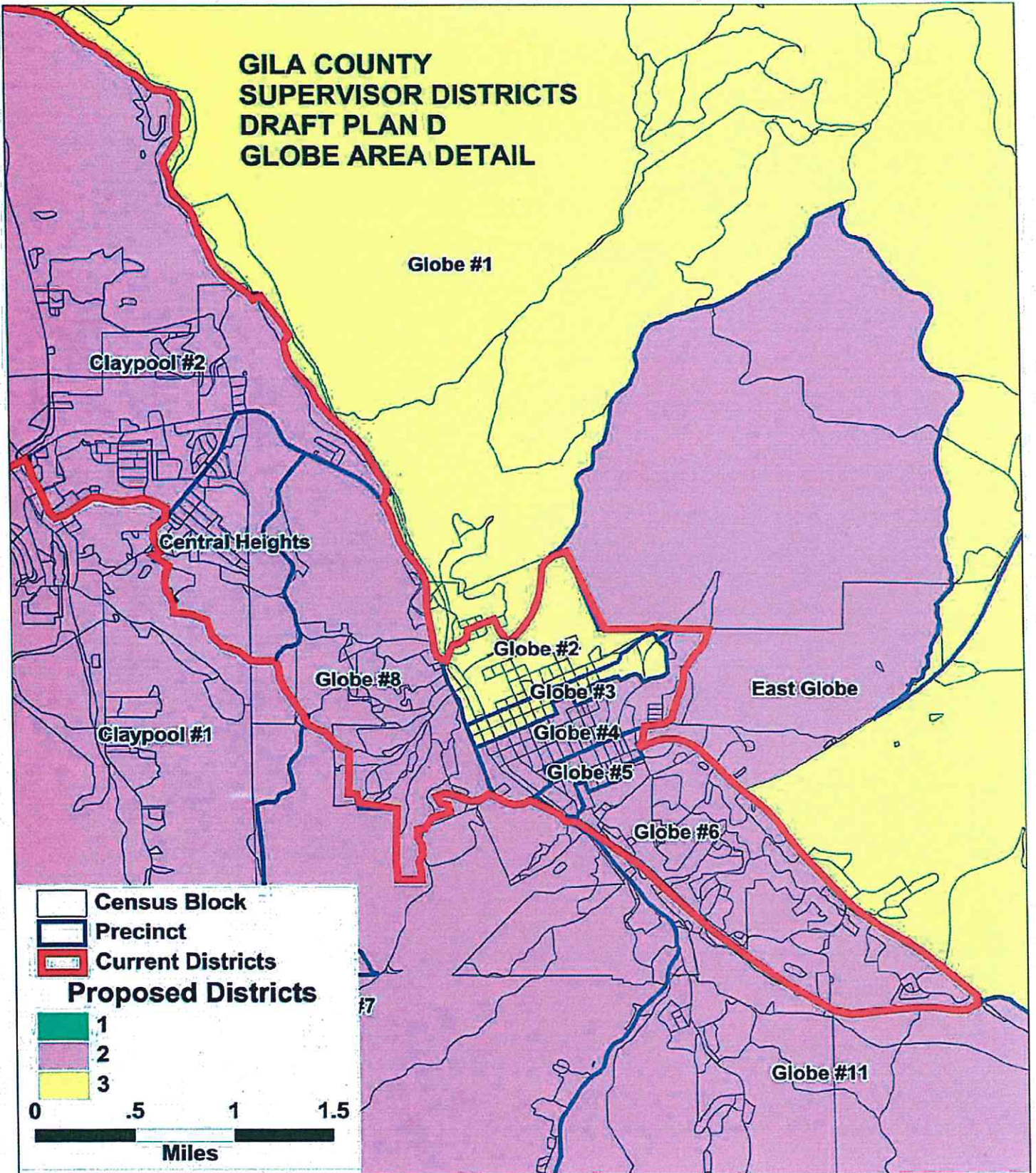
-  Census Block
-  Precinct
-  Current Districts
- Proposed Districts**
-  1
-  2
-  3

0 10 20 30  
Miles





**GILA COUNTY  
SUPERVISOR DISTRICTS  
DRAFT PLAN D  
GLOBE AREA DETAIL**



**GILA COUNTY SUPERVISORIAL DISTRICTS  
TOTAL POPULATION BY RACE AND HISPANIC ORIGIN  
DRAFT PLAN D**

Number:	District 1	District 2	District 3	Total, All Districts
Hispanic, of any race	1,467	6,226	1,895	9,588
Non-Hispanic White	16,025	10,424	8,849	35,298
Non-Hispanic Black	87	96	65	248
Non-Hispanic American Indian	357	629	6,989	7,975
Non-Hispanic Asian	114	127	80	321
Non-Hispanic Hawaiian	22	11	6	39
Non-Hispanic other race	20	25	21	66
Non-Hispanic two or more races	13	24	25	62
<b>Total Population</b>	<b>18,105</b>	<b>17,562</b>	<b>17,930</b>	<b>53,597</b>
<b>Percent:</b>				
Hispanic, of any race	8.10%	35.45%	10.57%	17.89%
Non-Hispanic White	88.51%	59.36%	49.35%	65.86%
Non-Hispanic Black	0.48%	0.55%	0.36%	0.46%
Non-Hispanic American Indian	1.97%	3.58%	38.98%	14.88%
Non-Hispanic Asian	0.63%	0.72%	0.45%	0.60%
Non-Hispanic Hawaiian	0.12%	0.06%	0.03%	0.07%
Non-Hispanic other race	0.11%	0.14%	0.12%	0.12%
Non-Hispanic two or more races	0.07%	0.14%	0.14%	0.12%
<b>Total Percent</b>	<b>100.00%</b>	<b>100.00%</b>	<b>100.00%</b>	<b>100.00%</b>
Ideal Population	17,866	17,866	17,866	<b>Total</b>
Total Population	18,105	17,562	17,930	<b>deviation:</b>
Numeric deviation from Ideal Value	239	-304	64	<b>543</b>
Percent deviation from Ideal Value	1.34%	-1.70%	0.36%	<b>3.04%</b>

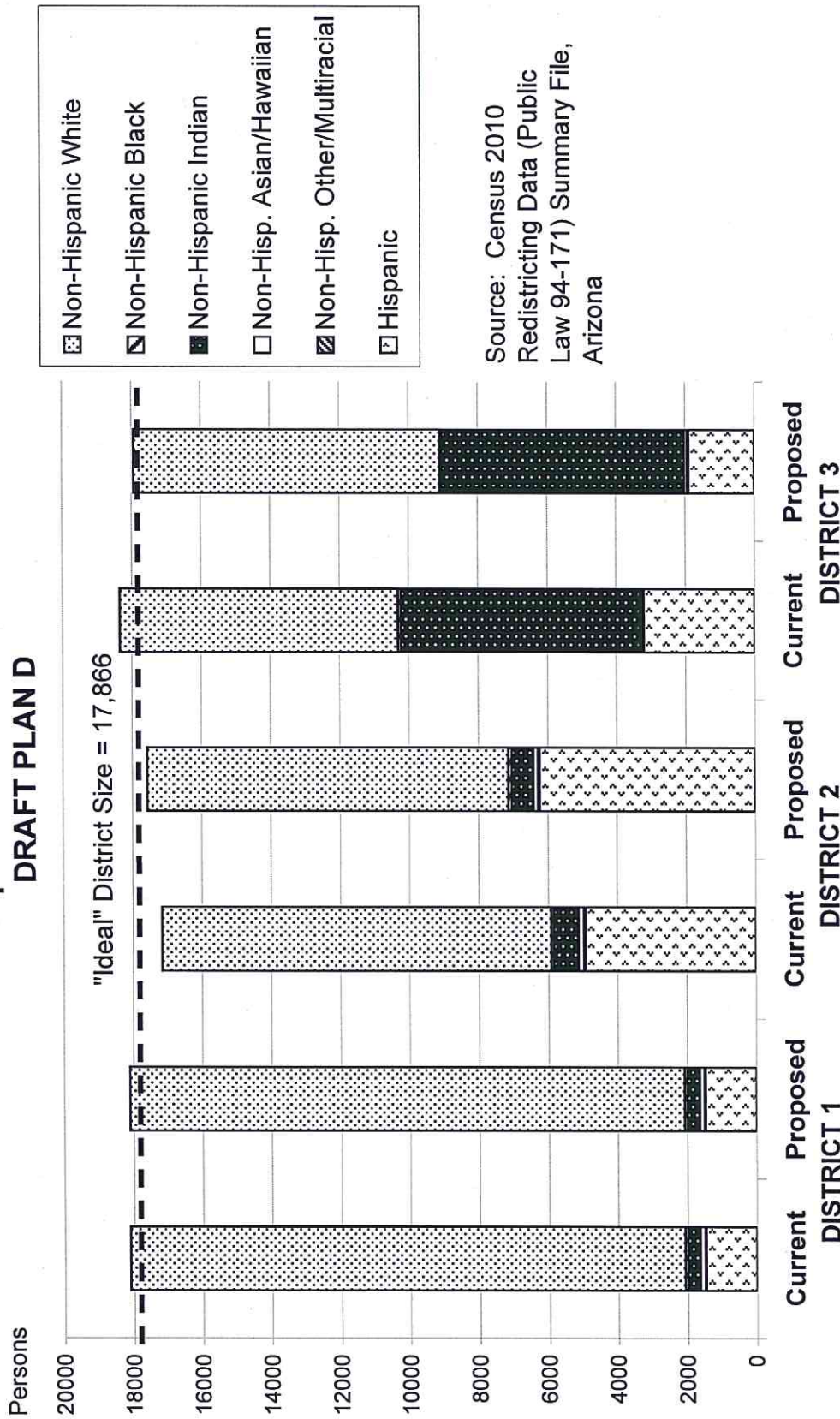
Source: Census 2010 Redistricting Data (Public Law 94-171) Summary file, Arizona  
 Tabulation: Research Advisory Services, Inc., Phoenix, AZ (602) 230-9580

**GILA COUNTY SUPERVISORIAL DISTRICTS  
VOTING-AGE POPULATION BY RACE AND HISPANIC ORIGIN  
DRAFT PLAN D**

<b>Voting-Age Number:</b>	<b>District 1</b>	<b>District 2</b>	<b>District 3</b>	<b>Total, All Districts</b>
Hispanic, of any race	947	4,331	1,241	<b>6,519</b>
Non-Hispanic White	13,806	8,643	7,473	<b>29,922</b>
Non-Hispanic Black	47	69	55	<b>171</b>
Non-Hispanic American Indian	266	422	4,457	<b>5,145</b>
Non-Hispanic Asian	90	103	59	<b>252</b>
Non-Hispanic Hawaiian	17	8	5	<b>30</b>
Non-Hispanic other race	9	18	17	<b>44</b>
Non-Hispanic two or more races	11	16	16	<b>43</b>
<b>Voting-Age Population</b>	<b>15,193</b>	<b>13,610</b>	<b>13,323</b>	<b>42,126</b>
<b>Voting-Age Percent:</b>				
Hispanic, of any race	6.23%	31.82%	9.31%	<b>15.48%</b>
Non-Hispanic White	90.87%	63.50%	56.09%	<b>71.03%</b>
Non-Hispanic Black	0.31%	0.51%	0.41%	<b>0.41%</b>
Non-Hispanic American Indian	1.75%	3.10%	33.45%	<b>12.21%</b>
Non-Hispanic Asian	0.59%	0.76%	0.44%	<b>0.60%</b>
Non-Hispanic Hawaiian	0.11%	0.06%	0.04%	<b>0.07%</b>
Non-Hispanic other race	0.06%	0.13%	0.13%	<b>0.10%</b>
Non-Hispanic two or more races	0.07%	0.12%	0.12%	<b>0.10%</b>
<b>Voting-Age Percent</b>	<b>100.00%</b>	<b>100.00%</b>	<b>100.00%</b>	<b>100.00%</b>

Source: Census 2010 Redistricting Data (Public Law 94-171) Summary file, Arizona  
 Tabulation: Research Advisory Services, Inc., Phoenix AZ (602) 230-9580

# Race and Origin Composition of Current and Proposed Gila County Supervisory Districts DRAFT PLAN D

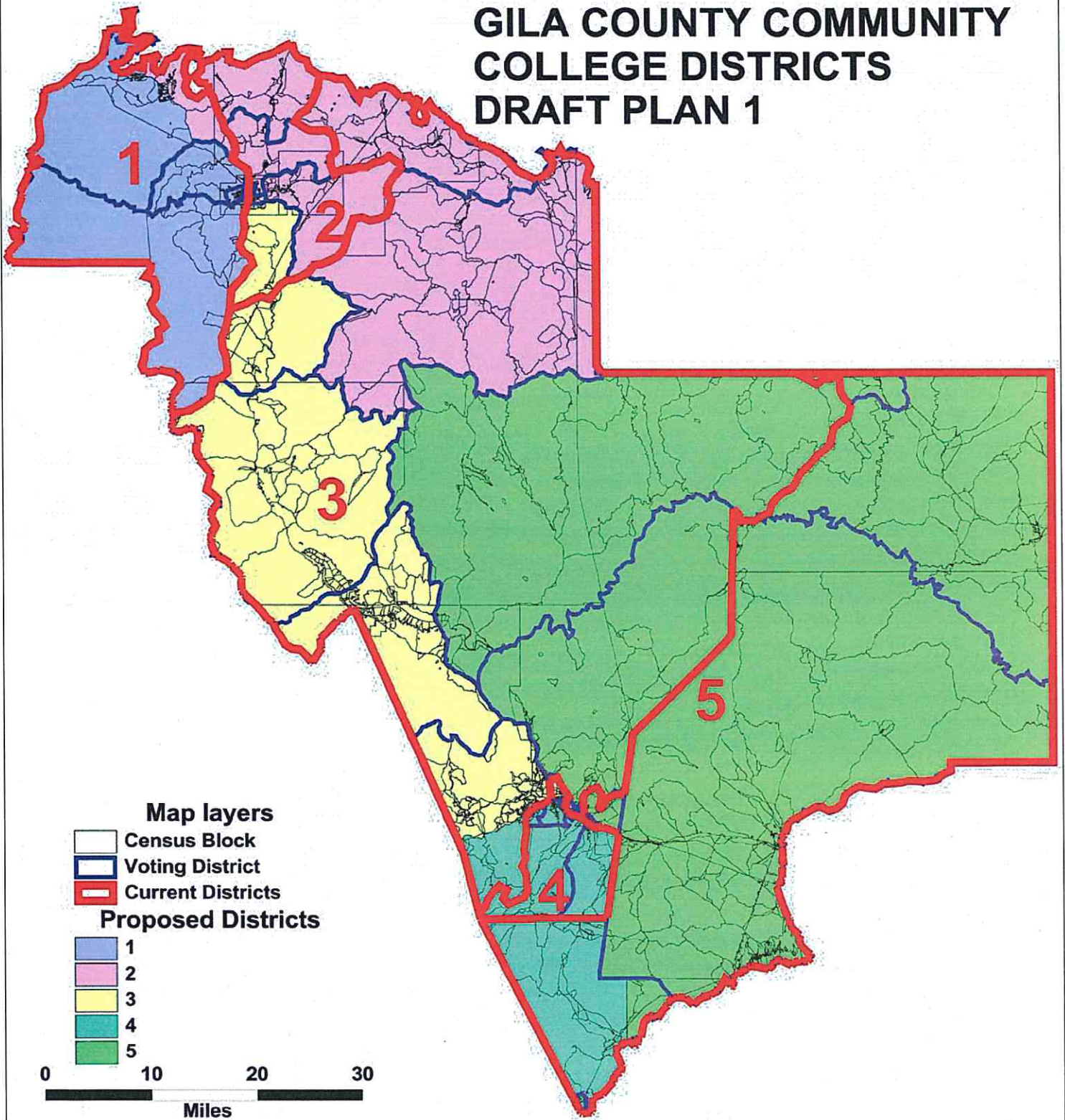


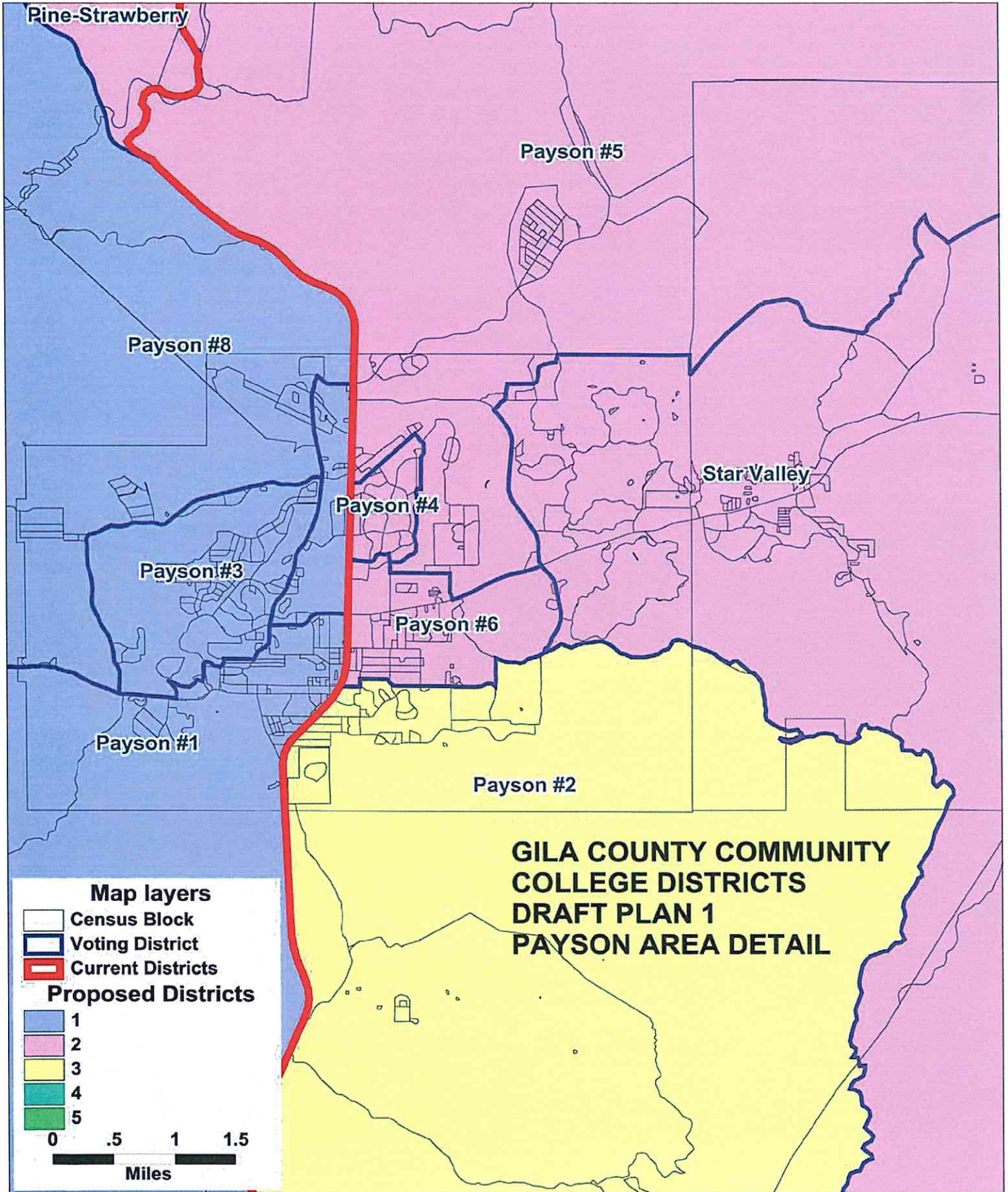
Source: Census 2010  
Redistricting Data (Public  
Law 94-171) Summary File,  
Arizona

**GILA COUNTY SUPERVISORIAL DISTRICTS  
DRAFT PLAN D**

	<b>Current</b>	<b>Proposed Plan</b>	<b>Change</b>
Population, District 1	18,105	18,105	0
Population, District 2	17,151	17,562	411
Population, District 3	18,341	17,930	-411
Population deviation, District 1	239	239	
Population deviation, District 2	-715	-304	
Population deviation, District 3	475	64	
Percent deviation, District 1	1.34%	1.34%	
Percent deviation, District 2	-4.00%	-1.70%	
Percent deviation, District 3	2.66%	0.36%	
Total plan deviation, number	1,190	543	
Total plan deviation, percent	6.66%	3.04%	
Percent voting-age Hispanic, District 1	6.23%	6.23%	0.00%
Percent voting-age Hispanic, District 2	24.88%	31.82%	6.94%
Percent voting-age Hispanic, District 3	16.45%	9.31%	-7.14%
Percent V-A Non-Hispanic Native American, District 1	1.75%	1.75%	0.00%
Percent V-A Non-Hispanic Native American, District 2	3.63%	3.10%	-0.53%
Percent V-A Non-Hispanic Native American, District 3	32.77%	33.45%	0.68%
Percent V-A Non-Hispanic Black, District 1	0.31%	0.31%	0.00%
Percent V-A Non-Hispanic Black, District 2	0.46%	0.51%	0.05%
Percent V-A Non-Hispanic Black, District 3	0.46%	0.41%	-0.05%
Percent voting-age total minority residents, District 1	9.13%	9.13%	0.00%
Percent voting-age total minority residents, District 2	30.16%	36.50%	6.34%
Percent voting-age total minority residents, District 3	50.28%	43.91%	-6.37%

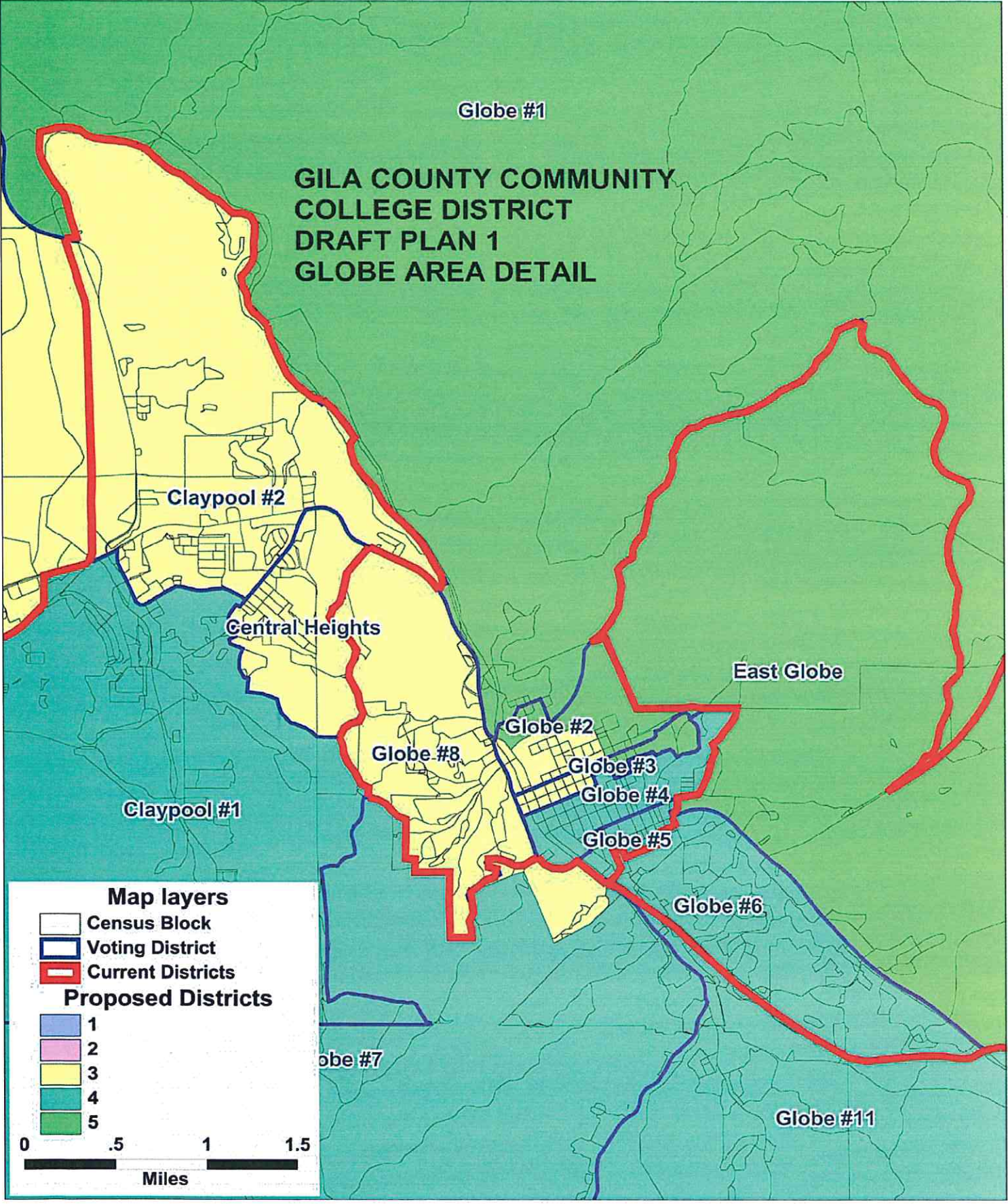
# GILA COUNTY COMMUNITY COLLEGE DISTRICTS DRAFT PLAN 1







# GILA COUNTY COMMUNITY COLLEGE DISTRICT DRAFT PLAN 1 GLOBE AREA DETAIL



### Map layers

- Census Block
- Voting District
- Current Districts

### Proposed Districts

- 1
- 2
- 3
- 4
- 5



**GILA COUNTY COMMUNITY COLLEGE DISTRICTS  
TOTAL POPULATION BY RACE AND HISPANIC ORIGIN  
DRAFT PLAN 1**

<u>Number:</u>	<u>District 1</u>	<u>District 2</u>	<u>District 3</u>	<u>District 4</u>	<u>District 5</u>	<u>Total, All Districts</u>
Hispanic, of any race	915	834	2,576	4,176	1,087	9,588
Non-Hispanic White	9,611	9,600	7,963	5,824	2,300	35,298
Non-Hispanic Black	55	46	49	59	39	248
Non-Hispanic American Indian	247	179	389	455	6,705	7,975
Non-Hispanic Asian	66	71	82	83	19	321
Non-Hispanic Hawaiian	13	14	10	2	0	39
Non-Hispanic other race	15	12	20	14	5	66
Non-Hispanic two or more races	8	11	13	14	16	62
<b>Total Population</b>	<b>10,930</b>	<b>10,767</b>	<b>11,102</b>	<b>10,627</b>	<b>10,171</b>	<b>53,597</b>

<u>Percent:</u>	<u>District 1</u>	<u>District 2</u>	<u>District 3</u>	<u>District 4</u>	<u>District 5</u>	<u>Total, All Districts</u>
Hispanic, of any race	8.37%	7.75%	23.20%	39.30%	10.69%	17.89%
Non-Hispanic White	87.93%	89.16%	71.73%	54.80%	22.61%	65.86%
Non-Hispanic Black	0.50%	0.43%	0.44%	0.56%	0.38%	0.46%
Non-Hispanic American Indian	2.26%	1.66%	3.50%	4.28%	65.92%	14.88%
Non-Hispanic Asian	0.60%	0.66%	0.74%	0.78%	0.19%	0.60%
Non-Hispanic Hawaiian	0.12%	0.13%	0.09%	0.02%	0.00%	0.07%
Non-Hispanic other race	0.14%	0.11%	0.18%	0.13%	0.05%	0.12%
Non-Hispanic two or more races	0.07%	0.10%	0.12%	0.13%	0.16%	0.12%
<b>Total Percent</b>	<b>100.00%</b>	<b>100.00%</b>	<b>100.00%</b>	<b>100.00%</b>	<b>100.00%</b>	<b>100.00%</b>

Ideal Population	10,719	10,719	10,719	10,719	10,719	<b>Total</b> 10,719
Total Population	10,930	10,767	11,102	10,627	10,171	<b>deviation:</b> -548
Numeric deviation from Ideal Value	211	48	383	-92	-548	931
Percent deviation from Ideal Value	1.96%	0.44%	3.57%	-0.86%	-5.12%	8.69%

Source: Census 2010 Redistricting Data (Public Law 94-171) Summary file, Arizona  
Tabulation: Research Advisory Services, Inc., Phoenix AZ (602) 230-9580

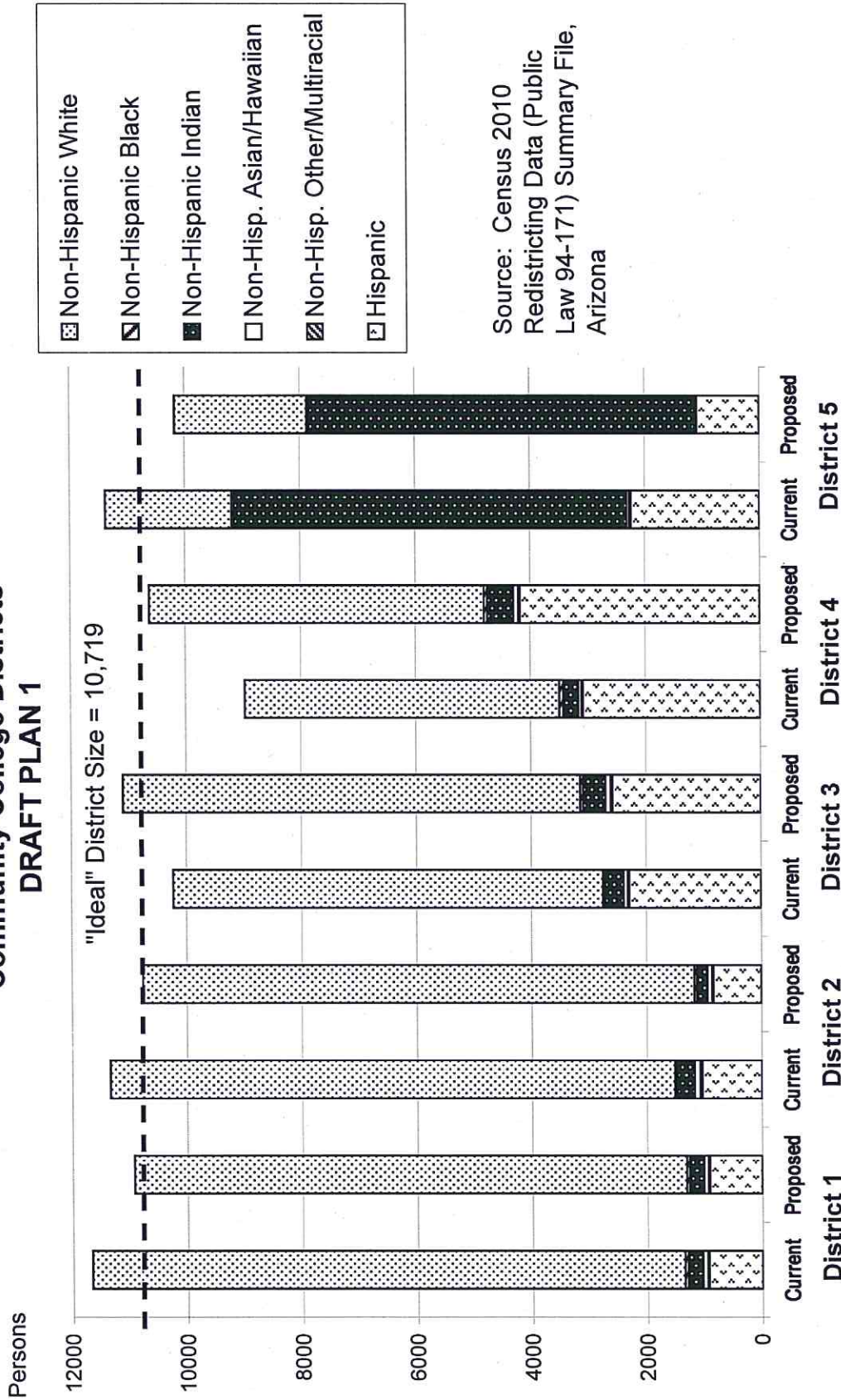
**GILA COUNTY COMMUNITY COLLEGE DISTRICTS  
VOTING-AGE POPULATIONS BY RACE AND HISPANIC ORIGIN  
DRAFT PLAN 1**

<u>Voting-Age Number:</u>	<u>District 1</u>	<u>District 2</u>	<u>District 3</u>	<u>District 4</u>	<u>District 5</u>	<u>Total, All Districts</u>
Hispanic, of any race	564	554	1,753	2,908	740	6,519
Non-Hispanic White	8,254	8,276	6,739	4,702	1,951	29,922
Non-Hispanic Black	33	21	40	38	39	171
Non-Hispanic American Indian	183	138	261	315	4,248	5,145
Non-Hispanic Asian	52	55	66	65	14	252
Non-Hispanic Hawaiian	8	13	8	1	0	30
Non-Hispanic other race	6	9	17	8	4	44
Non-Hispanic two or more races	6	9	8	9	11	43
<b>Voting-Age Population</b>	<b>9,106</b>	<b>9,075</b>	<b>8,892</b>	<b>8,046</b>	<b>7,007</b>	<b>42,126</b>

<u>Voting-Age Percent:</u>	<u>District 1</u>	<u>District 2</u>	<u>District 3</u>	<u>District 4</u>	<u>District 5</u>	<u>Total, All Districts</u>
Hispanic, of any race	6.19%	6.10%	19.71%	36.14%	10.56%	15.48%
Non-Hispanic White	90.64%	91.20%	75.79%	58.44%	27.84%	71.03%
Non-Hispanic Black	0.36%	0.23%	0.45%	0.47%	0.56%	0.41%
Non-Hispanic American Indian	2.01%	1.52%	2.94%	3.91%	60.63%	12.21%
Non-Hispanic Asian	0.57%	0.61%	0.74%	0.81%	0.20%	0.60%
Non-Hispanic Hawaiian	0.09%	0.14%	0.09%	0.01%	0.00%	0.07%
Non-Hispanic other race	0.07%	0.10%	0.19%	0.10%	0.06%	0.10%
Non-Hispanic two or more races	0.07%	0.10%	0.09%	0.11%	0.16%	0.10%
<b>Voting-Age Percent</b>	<b>100.00%</b>	<b>100.00%</b>	<b>100.00%</b>	<b>100.00%</b>	<b>100.00%</b>	<b>100.00%</b>

Source: Census 2010 Redistricting Data (Public Law 94-171) Summary file, Arizona  
 Tabulation: Research Advisory Services, Inc., Phoenix AZ (602) 230-9580

# Race and Origin Composition of Current and Proposed Gila County Community College Districts DRAFT PLAN 1



**GILA COUNTY COMMUNITY COLLEGE DISTRICTS  
DRAFT PLAN 1**

	<b>Current Districts</b>	<b>Proposed Plan</b>	<b>Change</b>
Population, District 1	11,670	10,930	-740
Population, District 2	11,342	10,767	-575
Population, District 3	10,231	11,102	871
Population, District 4	8,972	10,627	1,655
Population, District 5	11,382	10,171	-1,211
Population deviation, District 1	951	211	
Population deviation, District 2	623	48	
Population deviation, District 3	-488	383	
Population deviation, District 4	-1,747	-92	
Population deviation, District 5	663	-548	
Percent deviation, District 1	8.87%	1.96%	
Percent deviation, District 2	5.81%	0.44%	
Percent deviation, District 3	-4.56%	3.57%	
Percent deviation, District 4	-16.30%	-0.86%	
Percent deviation, District 5	6.18%	-5.12%	
Total plan deviation, number	2,698	931	
Total plan deviation, percent	25.17%	8.69%	
Percent voting-age Hispanic, District 1	5.89%	6.19%	0.30%
Percent voting-age Hispanic, District 2	7.24%	6.10%	-1.14%
Percent voting-age Hispanic, District 3	19.20%	19.71%	0.51%
Percent voting-age Hispanic, District 4	31.10%	36.14%	5.04%
Percent voting-age Hispanic, District 5	19.92%	10.56%	-9.36%
Percent voting-age Non-Hispanic Native American, District 1	1.93%	2.01%	0.08%
Percent voting-age Non-Hispanic Native American, District 2	2.37%	1.52%	-0.85%
Percent voting-age Non-Hispanic Native American, District 3	2.69%	2.94%	0.25%
Percent voting-age Non-Hispanic Native American, District 4	2.40%	3.91%	1.51%
Percent voting-age Non-Hispanic Native American, District 5	55.19%	60.63%	5.44%
Percent voting-age Non-Hispanic Black, District 1	0.35%	0.36%	0.01%
Percent voting-age Non-Hispanic Black, District 2	0.22%	0.23%	0.01%
Percent voting-age Non-Hispanic Black, District 3	0.35%	0.45%	0.10%
Percent voting-age Non-Hispanic Black, District 4	0.73%	0.47%	-0.26%
Percent voting-age Non-Hispanic Black, District 5	0.48%	0.56%	0.08%
Percent voting-age total minority residents, District 1	8.97%	9.36%	0.39%
Percent voting-age total minority residents, District 2	10.91%	8.80%	-2.11%
Percent voting-age total minority residents, District 3	23.12%	24.21%	1.09%
Percent voting-age total minority residents, District 4	35.12%	41.56%	6.44%
Percent voting-age total minority residents, District 5	76.31%	72.16%	-4.15%

**Changes to DRAFT PLAN 1**

1. Moved non-reservation part of Sierra Ancha precinct from CCD3 to CCD5
2. Moved southwest quadrant to Globe #2 precinct from CCD5 to CCD3.
3. Moved west half of Globe 3 from CCD5 to CCD3
4. Moved five blocks at the north end of Globe #7 from CCD4 to CCD3