


## DISCLOSURE STATEMENT

### STATEMENT OF LOCATIONS WHERE ALL NOTICES OF THE MEETINGS OF THE GILA COUNTY REDISTRICTING ADVISORY COMMITTEE WILL BE POSTED

To: Marian Sheppard, Deputy Clerk of the Board, Gila County

Pursuant to A.R.S. § 38-431.02, the Gila County Redistricting Advisory Committee hereby states that all notices of the Committee will be posted in the glass case which is located on the west wall of the Courthouse main entrance, 1400 E. Ash Street, Globe, Arizona. This location is accessible to the public Monday through Sunday, twenty-four (24) hours per day. Notices are also posted on the Gila County website located at [www.gilacountyaz.gov](http://www.gilacountyaz.gov). Such notices will indicate the date, time, and place of the meeting and will include an agenda or information concerning the manner in which the public may obtain an agenda for the meeting.

Dated this 14<sup>th</sup> day of March, 2010.

  
Linda V. Eastlick, Director  
Gila County Department of Elections

**CABLE TV ADS - JANUARY, 2011**

**GILA COUNTY WILL CREATE AN ADVISORY COMMITTEE  
TO ASSIST IN THE SUPERVISORY REDISTRICTING PROCESS**

Interested citizens can obtain application information from:

Linda Eastlick, Director Gila County Division of Elections - 928-402-8708

Gila County web site [www.gilacountyaz.gov](http://www.gilacountyaz.gov) under "Elections"

**Applications are due by 5:00 pm Tuesday, February 22, 2011.**

**Apache**

**Gila County nagont'aah hí biyi gee da'izohíí lenagodidzoh**

golzee yaa yádałt'i'j' híí ıla'ánádat'jj go ágolne' golzee. Shí itah yashti'le' nízih yúgo bésh  
bee yáná'itihé bee bichí handziih go díí (928)-402-8708 gee, Linda Eastlick, golzee híí  
da'ch'idik'a' binasdziid híí binant'án dayúgo híí Gila County tsighahon bee k'e'eshchii hé,  
computer dayilni hí ch'í'ntj'jh go díí agole', [www.gilacountyaz.gov](http://www.gilacountyaz.gov) aná nałtsoos hanłbiih go,  
ashdla'í, Tuesday hi bijj'j, February 22,2011 zhi' zhaą bee goz'aa.

**Spanish**

**EL CONDADO de GILA CREARA UN COMITE CONSULTIVO**

**Para PARTICIPAR EN EL DE SUPERVISION REDISTRICTING PROCESO**

Los ciudadanos interesados pueden obtener información de aplicación de: Linda Eastlick, el  
Director Gila Condado División de Elecciones - 928-402-8708

El Condado del sitio web de Gila [www.gilacountyaz.gov](http://www.gilacountyaz.gov) bajo "Elecciones"

**Las aplicaciones son debidas por 5:00 P.m. martes, el 22 de febrero de 2011.**



33° Fair  
See complete forecast

You are not logged in.  
(Log in • Create account)

Payson Marketplace ANA Public Notices Community Info Classifieds Real Estate Subscriptions Click here to see and buy photos  
News Sports Schools Opinion Living Submit Your Roundup Rim Review Tourism & Rec.  Search

ADVERTISEMENT

When it comes to finding a doctor, we've got you covered.

To find a physician, call 474-3222 or visit [www.paysonhospital.com](http://www.paysonhospital.com).



**Payson Regional Medical Center**  
Better Healthcare Starts Here.

Archive for Tuesday, January 25, 2011

Archive for Tuesday, January 25, 2011

## Redistricting committee to be seated by March 1

By Teresa McQuerrey  
January 25, 2011

Email Post a comment Print

The committee of citizens who will redraw the boundaries of Gila County's supervisor districts is scheduled to be in place by March 1.

ADVERTISEMENT

The board of supervisors approved the guidelines for selecting the committee at its Jan. 18 meeting.

Citizens interested in helping in the project can get the guidelines and an application from the office of District One Supervisor Tommie Martin at 610 E. Highway 260, Payson, between 8 a.m. and 5 p.m., Monday through Friday. The material will also be online at [www.gilacountyaz.gov](http://www.gilacountyaz.gov).

The county hopes to develop a pool of people to choose from and then the supervisors will appoint a committee of nine, with each board member selecting three people to serve.

Some of the guidelines are: participants must be registered voters, holding registration in the same party for at least two years; no serving elected official can be seated, nor anyone who has held a post in the last three years, been an officer of a political party, a lobbyist or an officer of a candidate's campaign committee; county employees cannot serve; and after serving on the redistricting committee a member cannot run for public office or register as a paid lobbyist for three years.

Those who make it through the selection process should expect to give up quite a bit of time as many meetings for presentations and hearings will be on the calendar and committee members must attend at least two-thirds of them.

"It's not a simple process and much is required," said Linda Eastlick with the county elections office, who presented the guidelines to the board of supervisors. To learn more, call Martin's office at (928) 474-2029.

**30/8 FIXED MORTGAGE**

<b>3.750%</b> Interest Rate*	<b>3.946%</b> APR Rate*
---------------------------------	----------------------------

30 Year Mortgage Due in 8 Years

**Apply Now**



Arizona State Credit Union

ADVERTISEMENT

**Click Here**



ERA  
REAL ESTATE

ADVERTISEMENT

ARIZONA'S ARCTIC CAT DEALER IN CUSTOMER SATISFACTION

POWER SPORTS

1498 E HWY 260, PAYSON, AZ

928-468-6164



CLICK HERE

ADVERTISEMENT

QUESTION OF THE WEEK

Do you think the current Fossil creek plan is a good idea?

- Yes
- No
- Undecided
- Needs more study
- Don't do anything

Vote  or see results

Translate Share

0



33° Fair  
See complete forecast

You are not logged in.  
(Log in • Create account)

Payson Marketplace ANA Public Notices Community Info Classifieds Real Estate Subscriptions Click here to see and buy photos  
News Sports Schools Opinion Living Submit Your Roundup Rim Review Tourism & Rec. Search

ADVERTISEMENT



Archive for Tuesday, February 15, 2011

Archive for Tuesday, February 15, 2011

## Redistricting committee applications due Feb. 22

By Teresa McQuerrey  
February 15, 2011

Email Post a comment Print

Only a small number of Northern Gila County residents attended a special meeting on redistricting Feb. 10.

Held at the Payson office of District One Supervisor Tommie Martin, about a dozen residents participated.

The county's redistricting consultants, Bruce Adelson of Federal Compliance Consulting of Maryland, and Tony Sissons of Research Advisory Services of Phoenix, along with Linda Eastlick, director of the Gila County Division of Elections, made presentations. Adelson and Sissons gave overviews of the redistricting process.

They shared the principles guiding the process:

- New districts should be substantially equal in population and
- Not harm minority voting rights.

Those are the only two absolute requirements; then there are principles to be applied "to the extent practicable": new districts should be compact, contiguous, preserve communities of interest and respect political subdivisions.

Additionally, the following principles may be made a priority by the county supervisors: preserve the cores of prior districts; politically competitive; not split existing voting precincts or census tracts; and use visible geographic features in determining boundaries.

Whether the new districts protect incumbent elected officials is also at the discretion of the supervisors.

Each supervisor will appoint three members to the citizen redistricting committee. Martin said she thinks it would also be a good idea to have at least one alternate named by each supervisor.

ADVERTISEMENT



**Rim Country Health & Retirement Community**

Skilled Nursing  
Rehabilitation  
Long Term Care  
Behavioral Health  
Onsite Dialysis  
Retirement Apartments

HEALTH, HOPE AND HOME SINCE 1985

ADVERTISEMENT

CHAPARRAL PINES

**JOIN THE CLUB**

ADVERTISEMENT

Connect with customers.

**Payson Marketplace**.com

ADVERTISEMENT

### QUESTION OF THE WEEK

Do you think the current Fossil creek plan is a good idea?

- Yes
- No
- Undecided
- Needs more study
- Don't do anything

Vote or see results

Translate Share

0

Citizens interested in being considered for appointment to the committee must have their applications submitted by 5 p.m., Tuesday, Feb. 22. The applications are available at Martin's office, 604 E. Hwy. 260, Payson, or they may be downloaded from the county's Web site: www.gilacountyaz.gov.

The goal is to have the committee's work completed by late summer or early fall and approval by the Department of Justice by the end of December.

To meet the goal, the committee could meet up to three times a month early on and then have one or two meetings closer to the conclusion of the process. The committee will also have two public meetings in each of the three supervisor districts.

The committee will also be responsible for drawing new boundaries for the five Gila Community College districts and the county's two vocational institutes of technology — Northern Arizona (NAVIT) and that serving southern Gila County.

**Official Census Stats**

Get Useful Stats, Tables, Maps, and More from the Census Bureau. 2010.census.gov

Ads by Google

PHOTO GALLERIES



PHOTOS



TOP ADS RSS

Top jobs · Top rentals · Top transportation

Post a comment

Post a comment (Requires free registration)

Posting comments requires a free account and verification.

Log in  
Register

Read our full policy. Also, read about banned accounts and harassing comments.

Post a blog entry

You have to be logged in to blog on Payson Roundup. Please log in or sign up.

Learn more about blogging on Payson Roundup.

**FITNESS EQUIPMENT**

**Sears**

*Payson Hometown Store*  
113 E. HIGHWAY 260 • 474-6050

ADVERTISEMENT

**Crabdree**  
INSURANCE & FINANCIAL SERVICES

*Proudly serving Tom County since 1969*  
431 S. Beeline • (928) 474-2265  
weinsurepayson.com

- AUTO
- HOME
- LIFE
- HEALTH
- BUSINESS

**1** *Special Service Area*

ADVERTISEMENT

Payson Roundup

News archives / About / Advertising / Feedback / Contact / Terms of use policy / Staff

Submit

Story idea / Photo / Engagement / Wedding / Anniversary / Obituary / Birth / Letter to the Editor / Press release

Contents of this site are © Copyright 2011 The Payson Roundup. All rights reserved. See our terms of use for RSS feeds.



52° Mostly Cloudy and ...  
See complete forecast

You are not logged in.  
(Log in • Create account)

Payson Marketplace ANA Public Notices Community Links Classifieds Real Estate Subscriptions Click here to see and buy photos  
News Sports Schools Opinion Living Submit Your Roundup Rim Review Tourism & Rec. Search

ADVERTISEMENT



Archive for Friday, March 4, 2011

Archive for Friday, March 4, 2011

## Supervisors select county redistricting committee

By Teresa McQuerrey

March 4, 2011

Email Comment (1) Print

Another mile marker on the long road to redistricting has been reached by Gila County.

The board of supervisors selected its nine-member redistricting committee and named a roster of six alternates at its March 1 meeting.

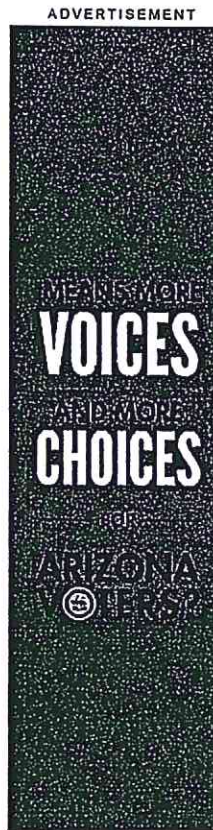
### Selections

District One Supervisor Tommie Martin selected James Muhr, a Republican, residing in Payson; David Prechtel, Republican, residing in Pine; and Mike Vogel, a Democrat, residing in Payson. She named Paul Bates, a Republican, of Payson, and Christine Harrison, a Democrat, of Payson, as alternates.

District Two Supervisor Mike Pastor, chairman of the board of supervisors, named Curtis Johnson, a Democrat, Miami; Adelaido Rodriguez, a Democrat, Globe; and Joseph Skamel, party not declared, Globe. As alternates he selected William Byrne, Democrat, Globe, and Linda Pearce, Democrat, Claypool.

District Three Supervisor Shirley Dawson selected Thomas Moody, Independent, Globe; Robert Pastor, Democrat, Globe; and Loretta Stone, party not declared, Globe. As alternates, Dawson named Gary Andress, Democrat, Claypool, and Robert Hibbert, Republican, Star Valley.

Bryan Chambers, deputy county attorney, told the supervisors the redistricting guidelines had no provision for alternates, so should one be needed they will have to formally appoint the individual.



ADVERTISEMENT



ADVERTISEMENT



ADVERTISEMENT

### QUESTION OF THE WEEK

Do you think the current Fossil creek plan is a good idea?

- Yes
- No
- Undecided
- Needs more study
- Don't do anything

Vote or see results

**Scott Walker Poll**  
Do you support Governor Walker? Vote here now.  
news1.newsmax.com

Ads by Google

6 March 2011 at 10:05 p.m.

Haapala (Dan Haapala) says...

Suggest removal  
Permalink

Recognizing several of the names, I am hopeful that intelligent discussions will evolve from this committee of appointed ones. Their inquiry and discussion, and ultimately their recommendations will have a profound affect on the next decade of Gila County politics. All of the electorate should watch these proceedings very closely and be involved. Please....be involved. It is more critical then ever to assure fairness in our County Government.

Post a comment

Post a blog entry

Post a comment (Requires free registration)

You have to be logged in to blog on Payson Roundup. Please log in or sign up.

Posting comments requires a free account and verification.

Learn more about blogging on Payson Roundup.

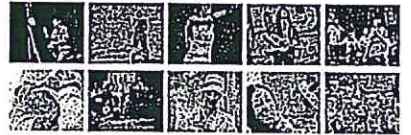
Log in  
Register

Read our full policy. Also, read about banned accounts and harassing comments.

PHOTO GALLERIES

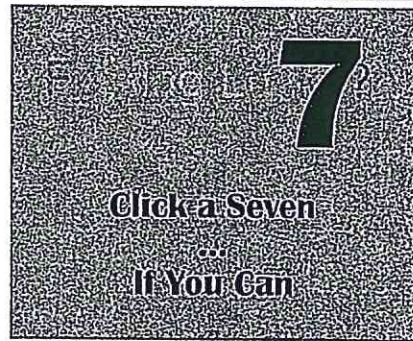


PHOTOS



TOP ADS    RSS

Top jobs · Top rentals · Top transportation



ADVERTISEMENT

When it comes to finding a doctor, we've got you covered.

To find a physician, call 474-3222 or visit [www.paysonhospital.com](http://www.paysonhospital.com).



**Payson Regional Medical Center**  
Better Healthcare Starts Here.

ADVERTISEMENT

Payson Roundup

News archives / About / Advertising / Feedback / Contact / Terms of use policy / Staff

Submit

Story idea / Photo / Engagement / Wedding / Anniversary / Obituary / Birth / Letter to the Editor / Press release

Contents of this site are © Copyright 2011 The Payson Roundup. All rights reserved. See our terms of use for RSS feeds.

*Bring publishing*



69° Fair  
See complete forecast

You are not logged in.  
(Log in • Create account)

Payson Marketplace ANA Public Notices Community Info Classifieds Real Estate Subscriptions Click here to see and buy photos  
News Sports Schools Opinion Living Submit Your Roundup Rim Review Tourism & Rec. Search

ADVERTISEMENT

**Mazatzal Hotel & Casino**  
PAYSON, AZ  
800-777-PLAY 777PLAY.COM

Today's news

Today's news

### Supervisors may increase redistricting committee

By Teresa McQuerrey  
March 11, 2011

Email Post a comment Print

The supervisors' appointment of six residents from the south part of Gila County and only three from northern Gila County to the redistricting committee will be revisited at its meeting March 15 meeting.

"Following in-depth discussions about appropriate representation of county residents, it has been determined that the number of Redistricting Advisory Committee members should increase from nine to twelve," wrote elections director Linda Eastlick in the documentation for the agenda item.

District One Supervisor Tommie Martin, who represents the majority of northern Gila County, said she hopes the change will make it possible for three more Rim Country residents to be named to the committee — and three more alternates.

Martin can name one resident to the committee, plus an alternate, and so can both Supervisors Mike Pastor and Shirley Dawson.

The boundaries for Pastor's and Dawson's districts are drawn in such a way that both represent northern Gila County residents, so they could select their added choices from the area. Neither chose to name northern Gila County residents during the first selection process March 1 — Dawson did name a Star Valley citizen as one of her alternates.

Payson Mayor Kenny Evans said on Thursday that Pastor and Dawson should have appointed committee members from the portions of their districts in northern Gila County.

"We live in a county that's stuck in yesteryear and that's sad," said Evans. "What seems skewed is that two supervisors would choose to appoint all three representatives from the southern ends of their

ADVERTISEMENT

Whatever you're looking for in Rim Country, Payson Marketplace can point you in the right direction.

**Anderson Dental Group**  
Creating Beautiful Smiles  
712 N. Bedline Highway, Payson, AZ  
(928) 471-5311

ADVERTISEMENT

Lucky?  
**7** Click a Seven  
If You Can

ADVERTISEMENT

INTRODUCING **4G** THE FASTEST 4G NETWORK IN AMERICA  
**PAYSON WIRELESS**

ADVERTISEMENT

QUESTION OF THE WEEK

How long will it take to actually get an ASU Campus in Payson?

- Three years
- Four years
- Five years
- Longer than five years
- Not at all

Translate Share

2



districts. I can't believe they can pretend they only represent voters from the south end of the county."

Evans has previously said Payson will file a lawsuit if the board of supervisors ends up approving district lines that don't reflect the district's population distribution.

Supervisor Martin discussed the matter at the March 10 meeting of the Citizens Awareness Committee at the Payson Public Library.

She said any residents who would like to be considered for appointment to the committee must have their completed applications into her Payson office by noon, Monday, March 14. Martin's office is at 610 E. Highway 260. Application forms and information can be picked up at the office or downloaded from the county's Web site: gilacountyaz.gov.

Officials from northern Gila County have been sharply critical of the redistricting committee appointments.

The committee will be responsible for several months of work to redraw the boundaries for the supervisor, community college and vocational education districts.

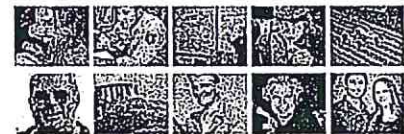
Martin said the initial meeting of the committee is planned for Tuesday, March 22 at the county's maintenance yard east of Star Valley.

A time had not been set as of press time.

PHOTO GALLERIES



PHOTOS



TOP ADS RSS

Top jobs · Top rentals · Top transportation

Official Census Stats  
Get Useful Stats, Tables, Maps, and More from the Census Bureau.

Payson AZ Realtors  
Search MLS for homes. See listings now, lots of photos: 928-468-8888

Ads by Google

Post a comment

Post a comment (Requires free registration)

Posting comments requires a free account and verification.

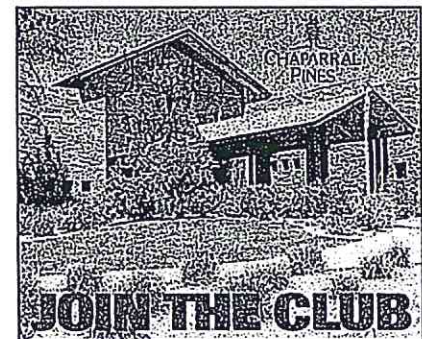
Log in  
Register

Read our full policy. Also, read about banned accounts and harassing comments.

Post a blog entry

You have to be logged in to blog on Payson Roundup. Please log in or sign up.

Learn more about blogging on Payson Roundup.



ADVERTISEMENT

Crabdree INSURANCE & FINANCIAL SERVICES. Proudly serving Riv. Country since 1969. 431 S. Beeline • (928) 474-2265. weinsurepayson.com. AUTO HOME LIFE HEALTH BUSINESS.

ADVERTISEMENT

Payson Roundup News archives / About / Advertising / Feedback / Contact / Terms of use policy / Staff  
Submit Story idea / Photo / Engagement / Wedding / Anniversary / Obituary / Birth / Letter to the Editor / Press release

Contents of this site are © Copyright 2011 The Payson Roundup. All rights reserved. See our terms of use for RSS feeds.

## DISCLOSURE STATEMENT

### STATEMENT OF LOCATIONS WHERE ALL NOTICES OF THE MEETINGS OF THE GILA COUNTY REDISTRICTING ADVISORY COMMITTEE WILL BE POSTED

To: Marian Sheppard, Deputy Clerk of the Board, Gila County

Pursuant to A.R.S. § 38-431.02, the Gila County Redistricting Advisory Committee hereby states that all notices of the Committee will be posted in the glass case which is located on the west wall of the Courthouse main entrance, 1400 E. Ash Street, Globe, Arizona. This location is accessible to the public Monday through Sunday, twenty-four (24) hours per day. Notices are also posted on the Gila County website located at [www.gilacountyaz.gov](http://www.gilacountyaz.gov). Such notices will indicate the date, time, and place of the meeting and will include an agenda or information concerning the manner in which the public may obtain an agenda for the meeting.

Dated this 14<sup>th</sup> day of March, 2010.

  
\_\_\_\_\_  
Linda V. Eastlick, Director  
Gila County Department of Elections

*file  
Dzung  
Publishing*



63° Fair  
See complete forecast

You are not logged in.  
(Log in • Create account)

Payson Marketplace ANA Public Notices Community Info Classifieds Real Estate Subscriptions Click here to see and buy photos  
News Sports Schools Opinion Living Submit Your Roundup Rim Review Tourism & Rec. Search

ADVERTISEMENT



Archive for Tuesday, March 22, 2011

Archive for Tuesday, March 22, 2011

# County redistricting has 6 north, 6 south members now

By Teresa McQuerrey  
March 22, 2011

Email Post a comment Print

Gila County's nine-member redistricting committee now has 12 members — six from the north and six from the south.

The change was made at the March 15 meeting of the board of supervisors.

Added to the committee were Robert Dalby of Payson, named by Chairman Mike Pastor, James Feezor, Payson, named by District One Supervisor Tommie Martin; and Roberto Sanchez, Star Valley, named by District Three Supervisor Shirley Dawson.

One of Pastor's initial selections for the committee, Curtis Johnson of Miami, resigned due to getting a job with the county. The chairman of the board named Gary Andress of Claypool as Johnson's replacement.

The expansion was made at the urging of Linda Eastlick, elections director.

"Following in-depth discussions about appropriate representation of County residents, it has been determined that the number of Redistricting Advisory Committee members should increase from nine to twelve," wrote Eastlick in the documentation for the agenda item.

The boundaries for Pastor's and Dawson's districts are drawn in such a way that both represent northern Gila County residents, so therefore they could select their added choices from the area. Neither chose to name northern Gila County residents during the first selection process March 1 —Dawson did name a Star Valley citizen as one of her alternates.

The committee will be responsible for several months of work to redraw the boundaries for the supervisor, community college and vocational education districts.

ADVERTISEMENT

**Cordell Rose Team**



Gary Cordell  
Excellence in Real Estate through teamwork



Deborah Rose

**REALTY SERVICES**

Northern Arizona  
6115 Decline Hwy, Payson  
928-474-4401  
FAX: 928-474-4601  
www.paysonproperties.net

Click a Seven  
If You Can

ADVERTISEMENT

Cordell Rose Team



Gary Cordell



Deborah Rose

Excellence in Real Estate through Teamwork

www.paysonproperties.net

ADVERTISEMENT

Connect with customers.



Payson Marketplace.com

ADVERTISEMENT

QUESTION OF THE WEEK

If passed how will the Senate Budget plan affect Payson?

- Payson won't be affected
- Payson will become a ghost town
- Payson residents' quality of life will suffer greatly
- Payson will transform into a small village community

Vote or see results

The committee will have its first meeting at 5:30 a.m. Tuesday, March 22 at the county maintenance yard east of Star Valley. It is scheduled to meet with the county's redistricting consultants Bruce Adelson of Federal Compliance Consulting and Tony Sissons of Research Advisory Services.

The meeting is open to the public.

**Official Census Stats**

Get Useful Stats, Tables, Maps, and More from the Census Bureau. 2010.census.gov

Ads by Google

**Post a comment**

Post a comment (Requires free registration)

Posting comments requires a free account and verification.

Log in  
Register

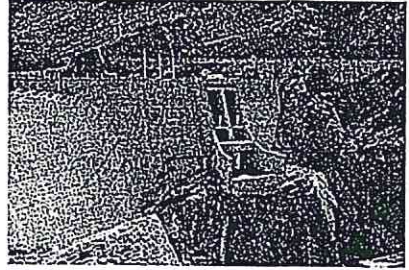
Read our full policy. Also, read about banned accounts and harassing comments.

**Post a blog entry**

You have to be logged in to blog on Payson Roundup. Please log in or sign up.

Learn more about blogging on Payson Roundup.

**PHOTO GALLERIES**



**PHOTOS**



TOP ADS    RSS

Top jobs · Top rentals · Top transportation

**M**  
**MESSINGER MORTUARIES**

PAYSON FUNERAL HOME  
& MOUNTAIN MEADOWS MEMORIAL PARK

Traditional funerals, memorial services, shipping, cremation  
and pre-need funeral and cemetery planning

**928-474-2800**  
302 W. Aero Drive, Payson, AZ 85541

ADVERTISEMENT

<b>Crabdree</b> INSURANCE & FINANCIAL SERVICES	<i>Proudly serving Rim Country since 1969</i>	<ul style="list-style-type: none"> <li>• AUTO</li> <li>• HOME</li> <li>• LIFE</li> <li>• HEALTH</li> <li>• BUSINESS</li> </ul>
	431 S. Beeline • (928) 474-2265 <a href="http://weinsurepayson.com">weinsurepayson.com</a>	

ADVERTISEMENT

Payson Roundup    News archives / About / Advertising / Feedback / Contact / Terms of use policy / Staff  
Submit    Story idea / Photo / Engagement / Wedding / Anniversary / Obituary / Birth / Letter to the Editor / Press release

Contents of this site are © Copyright 2011 The Payson Roundup. All rights reserved. See our terms of use for RSS feeds.

## Mata, Liz

---

**From:** Carolyn Wall [carriennette@yahoo.com]  
**Sent:** Tuesday, September 27, 2011 3:59 PM  
**To:** Mata, Liz  
**Subject:** RE: Meeting notices published in Payson Daily Bugle

Redistricting Gila County no easy task

By Carolyn Wall

Six committee members representing cities, towns and unincorporated communities north of Roosevelt Dam and six others representing the southern half of Gila County form a Redistricting Advisory Committee that will take on the task of carving up the county into voting districts based on the newly released 2010 census figures.

In order to qualify political candidates for 2012, the committee must get this done by the fall of 2011. This will give the Department of Justice (DOJ) 60 days to approve the plan that will redraw the boundaries for the supervisors, the community college and vocational education districts. The committee will do this with the help of experienced consultants Tony Sissons of Research Advisory Services and Bruce Adelson of Federal Compliance Consulting.

Sissons and Adelson were on hand Tuesday, March 22, in District 1 Supervisor Tommie Martin's office to answer questions and share their expertise on the controversial matter of meeting the DOJ's criteria for redistricting that will provide fair and equal representation - no easy task, as the State of Arizona found 10 years ago when the DOJ in Washington objected to the state's redistricting plan.

"The numbers were less than they represented, 48 percent Hispanic voters, not 55 percent," Adelson said. "There was a higher number of people under 18 years old."

That is why Arizona is now one of 16 states that has to get approval for its redistricting plans from the DOJ.

"As long as we have Russell Pearce doing Russell Pearce things, we're under a spotlight," Martin said.

The way the county is split into districts now gives more weight to the southern half, according to Martin.

The Gila Community College Board, with five members, has two who represent the northern part of the county, and, of three County Supervisors, Martin is the only one whose constituency is comprised solely of the residents of the northern half of the county.

The DOJ looks at one person, one vote, and protects the Native American and Hispanic vote when it looks to approve a redistricting plan. Section V of the Redistricting Plan states that discrimination is whether people who are non-White have electoral opportunity.

“Ten years ago the state made a serious big mistake,” Adelson said, “And we’re paying for it.”

#### Census Populations in Gila County Cities, Towns, Places

Payson:            2010-15,301 (an increase of 12.34 %)  
                              2000-13,620

Star Valley:      2010- 2,310  
                              2000-n/a

Pine                    2010-1,963 (an increase of 1.66%)  
                              2000-1,931

Strawberry:      2010-961 (a decrease of 6.52%)  
                              2000-1,028

Young:                2010-666 (an increase of 18.72%)  
                              2000-561

Globe:                2010-7,532 (an increase of 61%)  
                              2000-7,486

Hayden:             2010- 662 (a decrease of 25.78%)  
                              2000-892

Miami:                2010-1,837 (a decrease of 5.11%)  
                              2000-1,936

Winkleman:      2010-353 (a decrease of 20.32%)  
                              2000-443

San Carlos:        2010-4,038 (an increase of 8.67%)  
                              2000-3,716

In Gila County, the Hispanic population in District 1 for 2010 is 1,467, an increase of 86.88 percent. District 2's Hispanic population for 2010 is 4,916, an increase of .36 percent and District 3 is 18,341, an increase of 6.96 percent.

The American Indian population for 2010 in District 1 is 357, up from 128, and an increase of 178.91 percent. District 2 has a population of 715, an increase of 72.29 percent, and District 3 has the largest American Indian population at 6,903, up 17.62 percent over the last census.

For information on the State of Arizona census, go to <http://2010.census.gov/2010census/data>.

--- On Tue, 9/27/11, Mata, Liz <[lmata@co.gila.az.us](mailto:lmata@co.gila.az.us)> wrote:

> From: Mata, Liz <[lmata@co.gila.az.us](mailto:lmata@co.gila.az.us)>  
> Subject: RE: Meeting notices published in Payson Daily Bugle  
> To: "Carolyn Wall" <[carriennettie@yahoo.com](mailto:carriennettie@yahoo.com)>  
> Date: Tuesday, September 27, 2011, 3:13 PM I got the ads you ran,  
> thank you. I never received the article you said you wrote. You  
> could also send that by copying and pasting please?  
>  
> Thank you,  
>  
> Liz Mata  
> 928-402-8709  
>  
> -----Original Message-----  
> From: Carolyn Wall [<mailto:carriennettie@yahoo.com>]  
>  
> Sent: Tuesday, September 27, 2011 11:08 AM  
> To: Mata, Liz  
> Subject: Meeting notices published in Payson Daily Bugle  
>  
> Liz, I couldn't find the March 22 meeting notice, but am attaching an  
> article I wrote about the meeting. I looked all over for the March 22  
> notice. Do you know what date you sent it? Attaching all listings that  
> I have for county notices.  
> Hope this is what you need. In the future, I'll send you a copy of the  
> notice when I put it up on the Payson Daily Bugle. Thanks, hope this  
> works for you, Carolyn  
>

PAYSON ROUNDUP LOCAL FRIDAY, APRIL 15, 2011

## SV man selected as redistricting chairman

BY TERESA McQUERREY  
ROUNDUP STAFF REPORTER

Roberto Sanchez was elected chairman of the Gila County Redistricting Advisory Committee (RAC) at its April 12 meeting.

Sanchez, from Star Valley, was nominated for the post at the March 22 meeting of the RAC, but declined at that time.

Gary Andress of Claypool was elected as vice chairman.

Both men are Democrats and both reside in District 3, represented by Supervisor Shirley Dawson.

Sanchez lives in Community College District 2 and Andress is in the college board's District 4.

"It took them a few times, but they were able to elect a chairman and vice chairman," said Linda Eastlick, director of elections for Gila County, who led the meeting because the group was unable to elect a chair and

vice chair at the March 22 meeting.

The bulk of the April 12 meeting was devoted to housekeeping and educational matters.

Eastlick discussed redistricting principles, order at meetings, the procedure for a call to the public, receiving and documenting public input and the Voting Rights Act of 1965.

The next RAC meeting is scheduled for Tuesday, May 10.



# Redistricting group wants guidelines modified

BY TERESA MCQUERREY  
ROUNDUP STAFF REPORTER

Hoping to speed up the redistricting process, the chairman of the Gila County Redistricting Advisory Committee, Roberto Sanchez, is proposing the committee create a couple of study groups.

He would like one group to review proposals for the board of supervisors and the other to look at the suggestions for the community college districts.

At the committee's May 10 meeting, Sanchez suggested two six-member groups, each with three representatives from northern Gila County and three from southern Gila County.

Sanchez would chair the BOS study group and

vice chairman Gary Andress would chair the other.

Each group would bring its recommendations for the best plans — those meeting the required principles of redistricting — back to the whole committee for a vote. The required principles are assuring the districts are as equal in population as possible to provide for one person-one vote; and minority voting rights not be harmed.

The guidelines require any action must be approved by nine of the committee's 12 members.

The process will be advanced by making it unnecessary for the full committee to review all the proposals for redistricting.

Deputy county attorney Bryan Chambers said the committee could not create the

study groups of its own accord since guidelines don't allow for subcommittees.

It will be necessary to submit to the Board of Supervisors a proposal to modify the guidelines.

Elections director Linda Eastlick, who the county staff member facilitating the redistricting process, offered to draft the request for a modification of the guidelines and send it to the committee members for input. Per Chambers' instructions, any e-mails from members must be sent to Eastlick, not to the other members. She will then, when necessary, send it to the members through the blind carbon copy e-mail program. Using the blind carbon copy function, recipients can only respond to Eastlick with comments, which keeps the committee from violating open meeting laws.