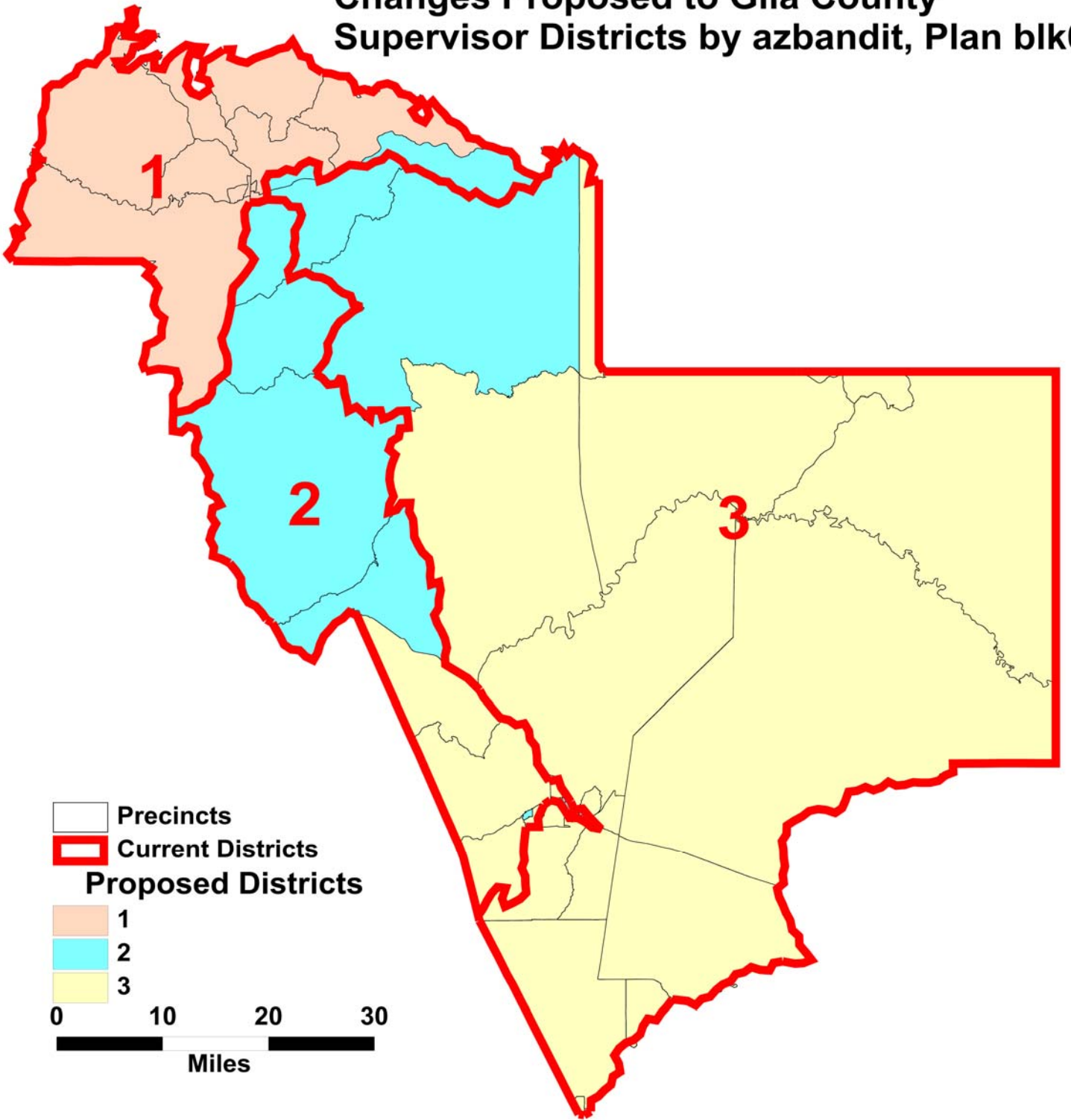


Changes Proposed to Gila County Supervisor Districts by azbandit, Plan blk01



**GILA COUNTY SUPERVISORIAL DISTRICTS
TOTAL POPULATION BY RACE AND HISPANIC ORIGIN
PLAN SUBMITTED BY: azbandit, Plan blk01**

<u>Number:</u>	<u>District 1</u>	<u>District 2</u>	<u>District 3</u>	<u>Total, All Districts</u>
Hispanic, of any race	1,463	3,945	4,180	9,588
Non-Hispanic White	15,799	13,033	6,466	35,298
Non-Hispanic Black	83	70	95	248
Non-Hispanic American Indian	356	682	6,937	7,975
Non-Hispanic Asian	114	145	62	321
Non-Hispanic Hawaiian	22	10	7	39
Non-Hispanic other race	20	33	13	66
Non-Hispanic two or more races	13	30	19	62
Total Population	17,870	17,948	17,779	53,597
<u>Percent:</u>				
Hispanic, of any race	8.19%	21.98%	23.51%	17.89%
Non-Hispanic White	88.41%	72.62%	36.37%	65.86%
Non-Hispanic Black	0.46%	0.39%	0.53%	0.46%
Non-Hispanic American Indian	1.99%	3.80%	39.02%	14.88%
Non-Hispanic Asian	0.64%	0.81%	0.35%	0.60%
Non-Hispanic Hawaiian	0.12%	0.06%	0.04%	0.07%
Non-Hispanic other race	0.11%	0.18%	0.07%	0.12%
Non-Hispanic two or more races	0.07%	0.17%	0.11%	0.12%
Total Percent	100.00%	100.00%	100.00%	100.00%
Ideal Population	17,866	17,866	17,866	Total deviation: 169 0.95%
Total Population	17,870	17,948	17,779	
Numeric deviation from Ideal Value	4	82	-87	
Percent deviation from Ideal Value	0.02%	0.46%	-0.49%	

Source: Census 2010 Redistricting Data (Public Law 94-171) Summary file, Arizona
 Tabulation: Research Advisory Services, Inc., Phoenix AZ (602) 230-9580

**GILA COUNTY SUPERVISORIAL DISTRICTS
VOTING-AGE POPULATION BY RACE AND HISPANIC ORIGIN
PLAN SUBMITTED BY: azbandit, Plan blk01**

<u>Voting-Age Number:</u>	<u>District 1</u>	<u>District 2</u>	<u>District 3</u>	<u>Total, All Districts</u>
Hispanic, of any race	943	2,653	2,923	6,519
Non-Hispanic White	13,601	11,063	5,258	29,922
Non-Hispanic Black	46	54	71	171
Non-Hispanic American Indian	265	483	4,397	5,145
Non-Hispanic Asian	90	115	47	252
Non-Hispanic Hawaiian	17	8	5	30
Non-Hispanic other race	9	26	9	44
Non-Hispanic two or more races	11	19	13	43
<i>Voting-Age Population</i>	14,982	14,421	12,723	42,126
<u>Voting-Age Percent:</u>				
Hispanic, of any race	6.29%	18.40%	22.97%	15.48%
Non-Hispanic White	90.78%	76.71%	41.33%	71.03%
Non-Hispanic Black	0.31%	0.37%	0.56%	0.41%
Non-Hispanic American Indian	1.77%	3.35%	34.56%	12.21%
Non-Hispanic Asian	0.60%	0.80%	0.37%	0.60%
Non-Hispanic Hawaiian	0.11%	0.06%	0.04%	0.07%
Non-Hispanic other race	0.06%	0.18%	0.07%	0.10%
Non-Hispanic two or more races	0.07%	0.13%	0.10%	0.10%
<i>Voting-Age Percent</i>	100.00%	100.00%	100.00%	100.00%

Source: Census 2010 Redistricting Data (Public Law 94-171) Summary file, Arizona

Tabulation: Research Advisory Services, Inc., Phoenix AZ (602) 230-9580

Race and Origin Composition of Current and Proposed Gila County Supervisory Districts

Plan submitted by: azbandit, Plan blk01

Persons

20000

18000

16000

14000

12000

10000

8000

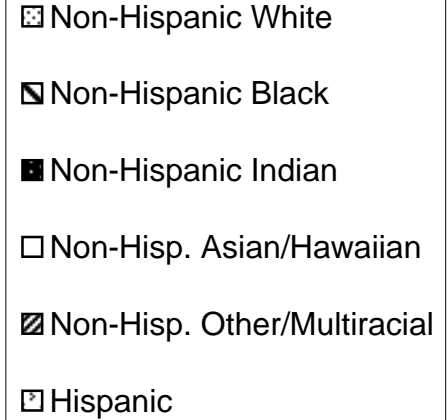
6000

4000

2000

0

"Ideal" District Size = 17,866



Source: Census 2010
Redistricting Data (Public
Law 94-171) Summary File,
Arizona

Current

Proposed

Current

Proposed

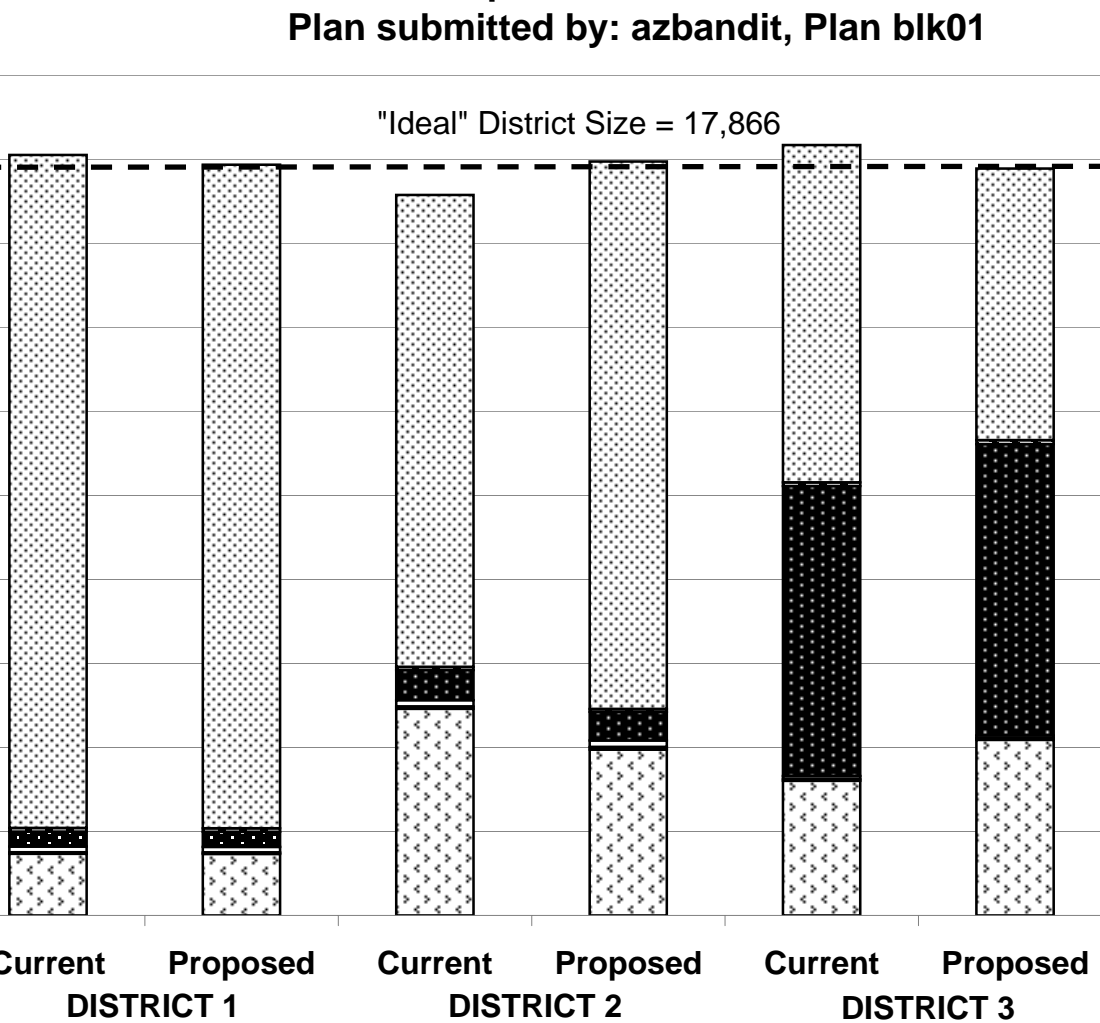
Current

Proposed

DISTRICT 1

DISTRICT 2

DISTRICT 3



**GILA COUNTY SUPERVISORIAL DISTRICTS
PLAN SUBMITTED BY: azbandit, Plan blk01**

	Current	Proposed Plan	Change
Population, District 1	18,105	17,870	-235
Population, District 2	17,151	17,948	797
Population, District 3	18,341	17,779	-562
Population deviation, District 1	239	4	
Population deviation, District 2	-715	82	
Population deviation, District 3	475	-87	
Percent deviation, District 1	1.34%	0.02%	
Percent deviation, District 2	-4.00%	0.46%	
Percent deviation, District 3	2.66%	-0.49%	
Total plan deviation, number	1,190	169	
Total plan deviation, percent	6.66%	0.95%	
Percent voting-age Hispanic, District 1	6.23%	6.29%	0.06%
Percent voting-age Hispanic, District 2	24.88%	18.40%	-6.48%
Percent voting-age Hispanic, District 3	16.45%	22.97%	6.52%
Percent V-A Non-Hispanic Native American, District 1	1.75%	1.77%	0.02%
Percent V-A Non-Hispanic Native American, District 2	3.63%	3.35%	-0.28%
Percent V-A Non-Hispanic Native American, District 3	32.77%	34.56%	1.79%
Percent V-A Non-Hispanic Black, District 1	0.31%	0.31%	0.00%
Percent V-A Non-Hispanic Black, District 2	0.46%	0.37%	-0.09%
Percent V-A Non-Hispanic Black, District 3	0.46%	0.56%	0.10%
Percent voting-age total minority residents, District 1	9.13%	9.22%	0.09%
Percent voting-age total minority residents, District 2	30.16%	23.29%	-6.87%
Percent voting-age total minority residents, District 3	50.28%	58.67%	8.39%

Consultant's Review Comments:

This plan makes a significant reduction in the total population deviation, achieving a deviation of less than one percent.

We note that District 2 is split into two noncontiguous pieces. Until that situation is rectified, there is no point in assessing the effect of the plan on minority populations under the Voting Rights Act.