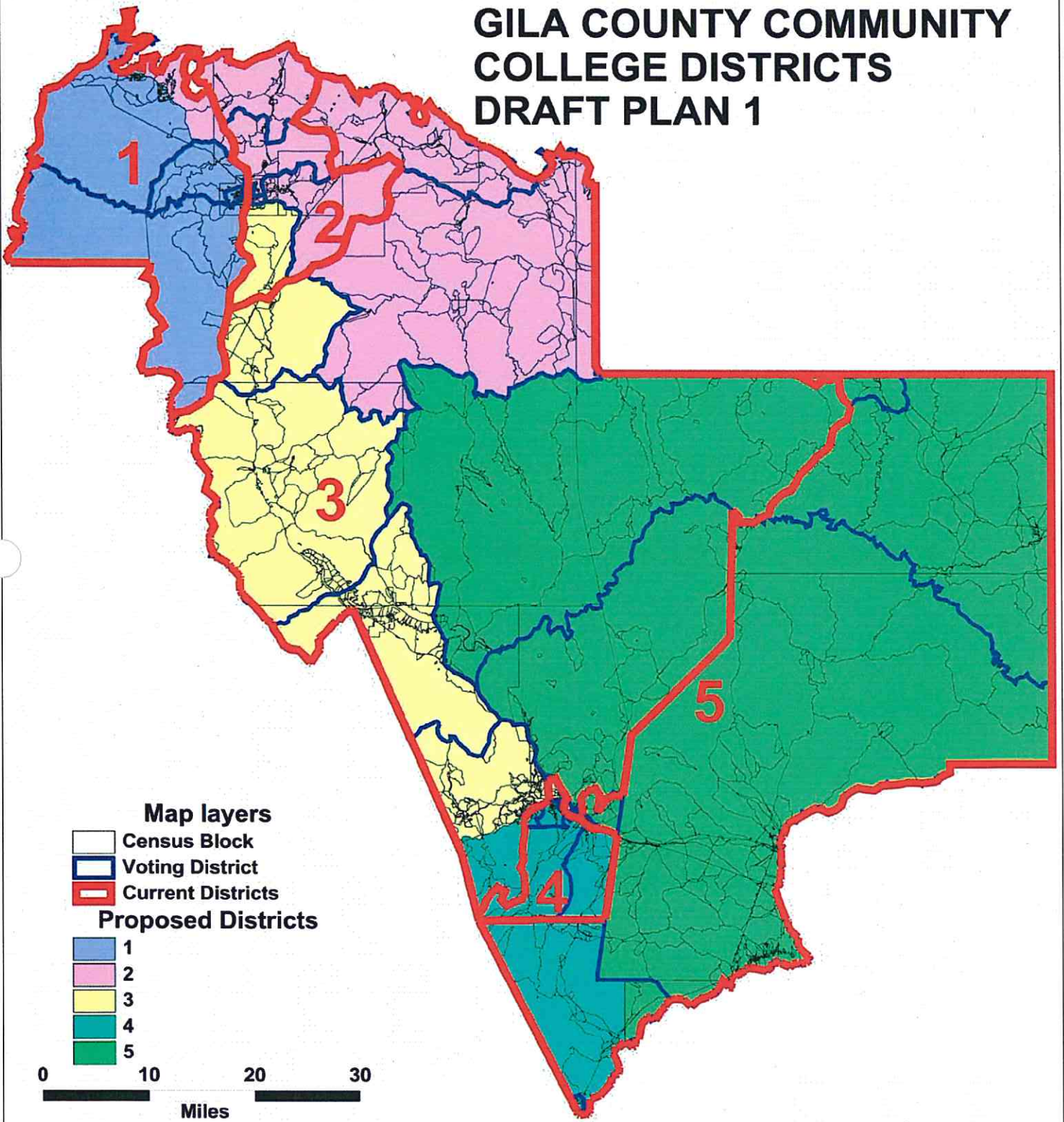
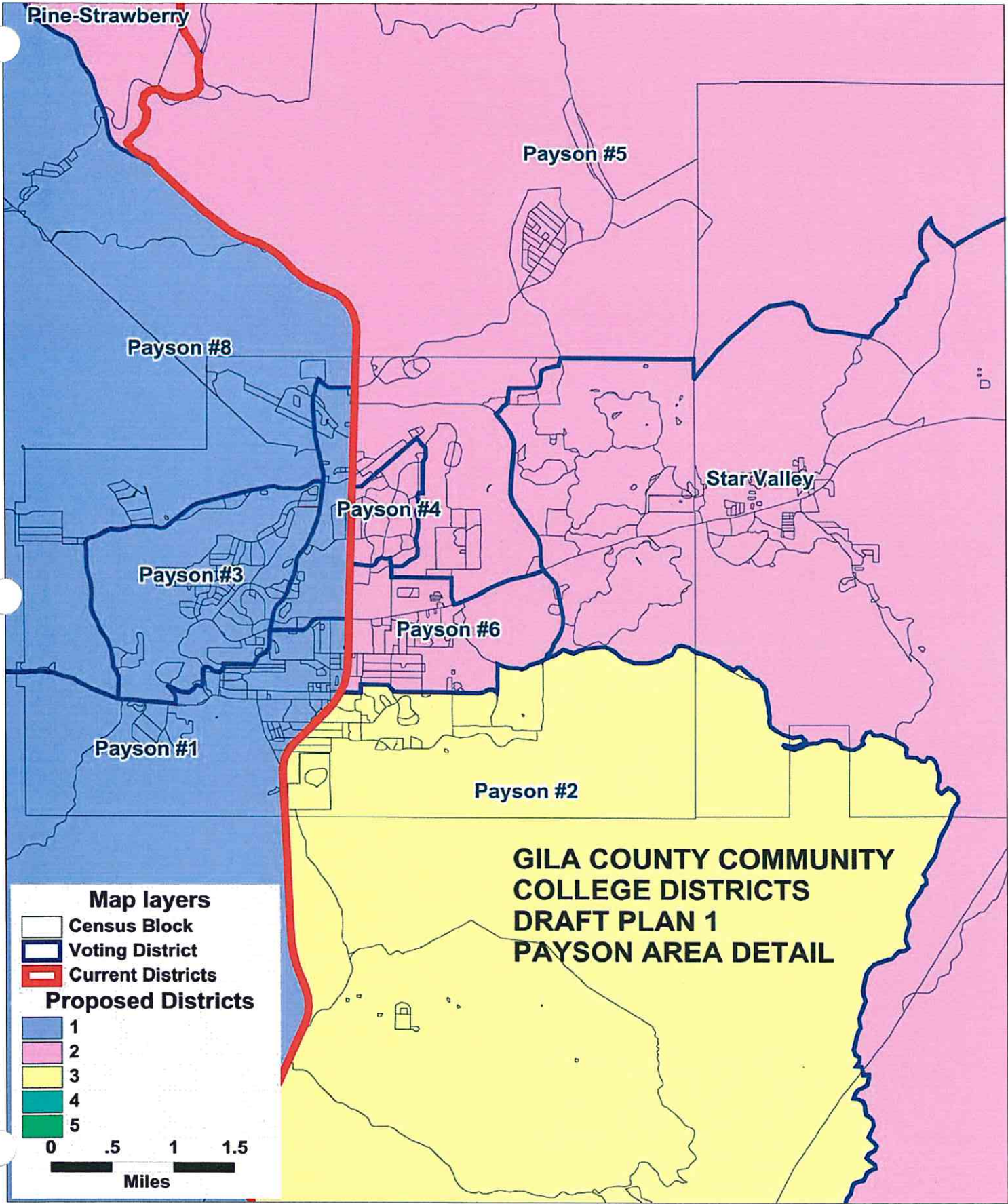


GILA COUNTY COMMUNITY COLLEGE DISTRICTS DRAFT PLAN 1





Pine-Strawberry

Payson #5

Payson #8

Star Valley

Payson #4

Payson #3

Payson #6

Payson #1

Payson #2

Globe #1

GILA COUNTY COMMUNITY COLLEGE DISTRICT DRAFT PLAN 1 GLOBE AREA DETAIL

Claypool #2

Central Heights

East Globe

Claypool #1

Globe #8

Globe #2

Globe #3

Globe #4



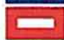
Globe #5

Globe #6


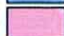
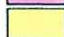


Globe #7

Globe #11

Map layers

-  Census Block
-  Voting District
-  Current Districts

Proposed Districts

-  1
-  2
-  3
-  4
-  5



**GILA COUNTY COMMUNITY COLLEGE DISTRICTS
TOTAL POPULATION BY RACE AND HISPANIC ORIGIN
DRAFT PLAN 1**

Number:	District 1	District 2	District 3	District 4	District 5	Total, All Districts
Hispanic, of any race	915	834	2,576	4,176	1,087	9,588
Non-Hispanic White	9,611	9,600	7,963	5,824	2,300	35,298
Non-Hispanic Black	55	46	49	59	39	248
Non-Hispanic American Indian	247	179	389	455	6,705	7,975
Non-Hispanic Asian	66	71	82	83	19	321
Non-Hispanic Hawaiian	13	14	10	2	0	39
Non-Hispanic other race	15	12	20	14	5	66
Non-Hispanic two or more races	8	11	13	14	16	62
Total Population	10,930	10,767	11,102	10,627	10,171	53,597
Percent:						
Hispanic, of any race	8.37%	7.75%	23.20%	39.30%	10.69%	17.89%
Non-Hispanic White	87.93%	89.16%	71.73%	54.80%	22.61%	65.86%
Non-Hispanic Black	0.50%	0.43%	0.44%	0.56%	0.38%	0.46%
Non-Hispanic American Indian	2.26%	1.66%	3.50%	4.28%	65.92%	14.88%
Non-Hispanic Asian	0.60%	0.66%	0.74%	0.78%	0.19%	0.60%
Non-Hispanic Hawaiian	0.12%	0.13%	0.09%	0.02%	0.00%	0.07%
Non-Hispanic other race	0.14%	0.11%	0.18%	0.13%	0.05%	0.12%
Non-Hispanic two or more races	0.07%	0.10%	0.12%	0.13%	0.16%	0.12%
Total Percent	100.00%	100.00%	100.00%	100.00%	100.00%	100.00%
Ideal Population	10,719	10,719	10,719	10,719	10,719	Total 10,719
Total Population	10,930	10,767	11,102	10,627	10,171	deviation: 10,171
Numeric deviation from Ideal Value	211	48	383	-92	-548	931
Percent deviation from Ideal Value	1.96%	0.44%	3.57%	-0.86%	-5.12%	8.69%

Source: Census 2010 Redistricting Data (Public Law 94-171) Summary file, Arizona
 Tabulation: Research Advisory Services, Inc., Phoenix AZ (602) 230-9580

**GILA COUNTY COMMUNITY COLLEGE DISTRICTS
VOTING-AGE POPULATIONS BY RACE AND HISPANIC ORIGIN
DRAFT PLAN 1**

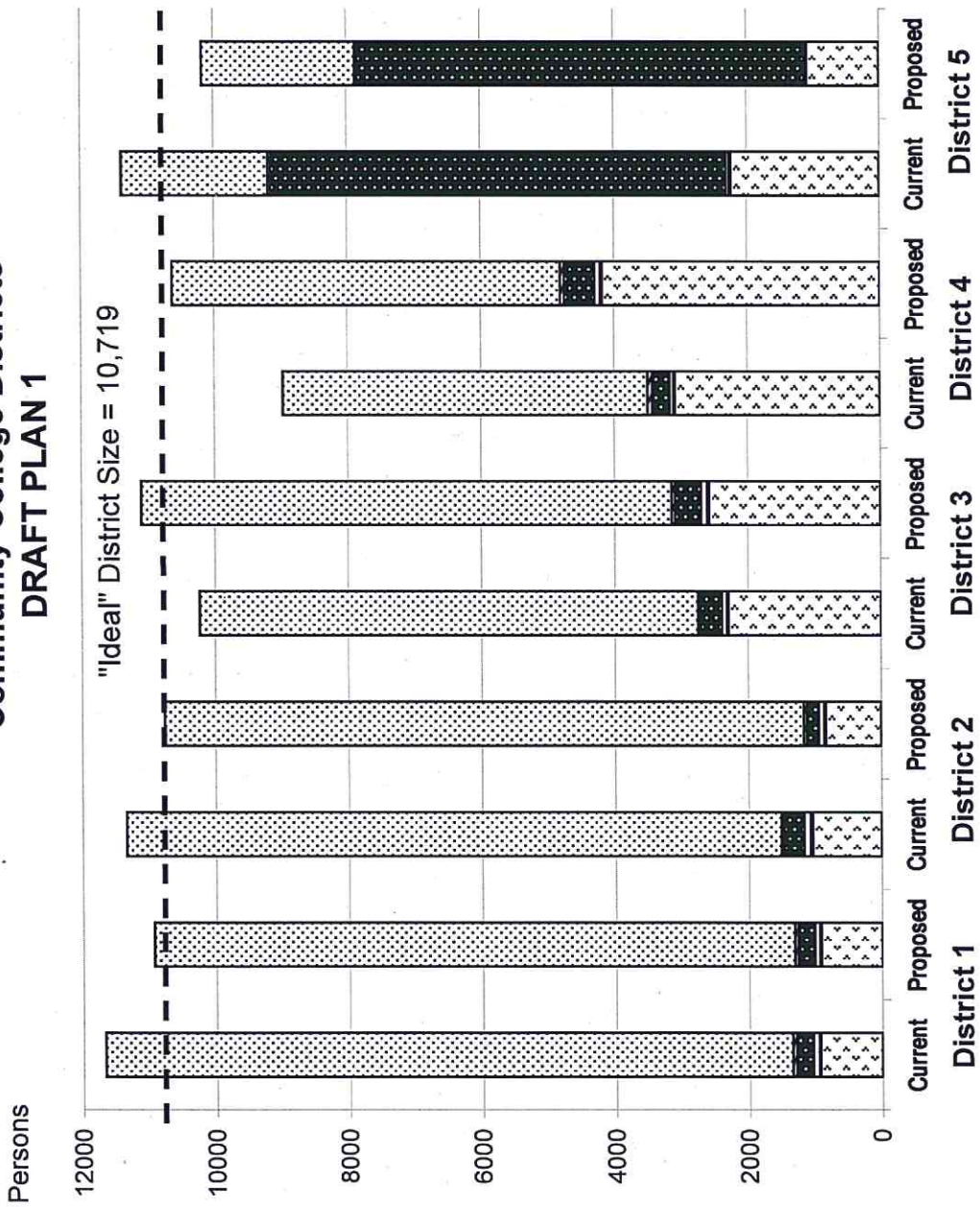
<u>Voting-Age Number:</u>	<u>District 1</u>	<u>District 2</u>	<u>District 3</u>	<u>District 4</u>	<u>District 5</u>	<u>Total, All Districts</u>
Hispanic, of any race	564	554	1,753	2,908	740	6,519
Non-Hispanic White	8,254	8,276	6,739	4,702	1,951	29,922
Non-Hispanic Black	33	21	40	38	39	171
Non-Hispanic American Indian	183	138	261	315	4,248	5,145
Non-Hispanic Asian	52	55	66	65	14	252
Non-Hispanic Hawaiian	8	13	8	1	0	30
Non-Hispanic other race	6	9	17	8	4	44
Non-Hispanic two or more races	6	9	8	9	11	43
Voting-Age Population	9,106	9,075	8,892	8,046	7,007	42,126
<u>Voting-Age Percent:</u>						
Hispanic, of any race	6.19%	6.10%	19.71%	36.14%	10.56%	15.48%
Non-Hispanic White	90.64%	91.20%	75.79%	58.44%	27.84%	71.03%
Non-Hispanic Black	0.36%	0.23%	0.45%	0.47%	0.56%	0.41%
Non-Hispanic American Indian	2.01%	1.52%	2.94%	3.91%	60.63%	12.21%
Non-Hispanic Asian	0.57%	0.61%	0.74%	0.81%	0.20%	0.60%
Non-Hispanic Hawaiian	0.09%	0.14%	0.09%	0.01%	0.00%	0.07%
Non-Hispanic other race	0.07%	0.10%	0.19%	0.10%	0.06%	0.10%
Non-Hispanic two or more races	0.07%	0.10%	0.09%	0.11%	0.16%	0.10%
Voting-Age Percent	100.00%	100.00%	100.00%	100.00%	100.00%	100.00%

Source: Census 2010 Redistricting Data (Public Law 94-171) Summary file, Arizona
 Tabulation: Research Advisory Services, Inc., Phoenix AZ (602) 230-9580

Race and Origin Composition of Current and Proposed Gila County Community College Districts DRAFT PLAN 1

- ▨ Non-Hispanic White
- ▩ Non-Hispanic Black
- Non-Hispanic Indian
- Non-Hisp. Asian/Hawaiian
- ▤ Non-Hisp. Other/Multiracial
- ▧ Hispanic

Source: Census 2010
Redistricting Data (Public
Law 94-171) Summary File,
Arizona



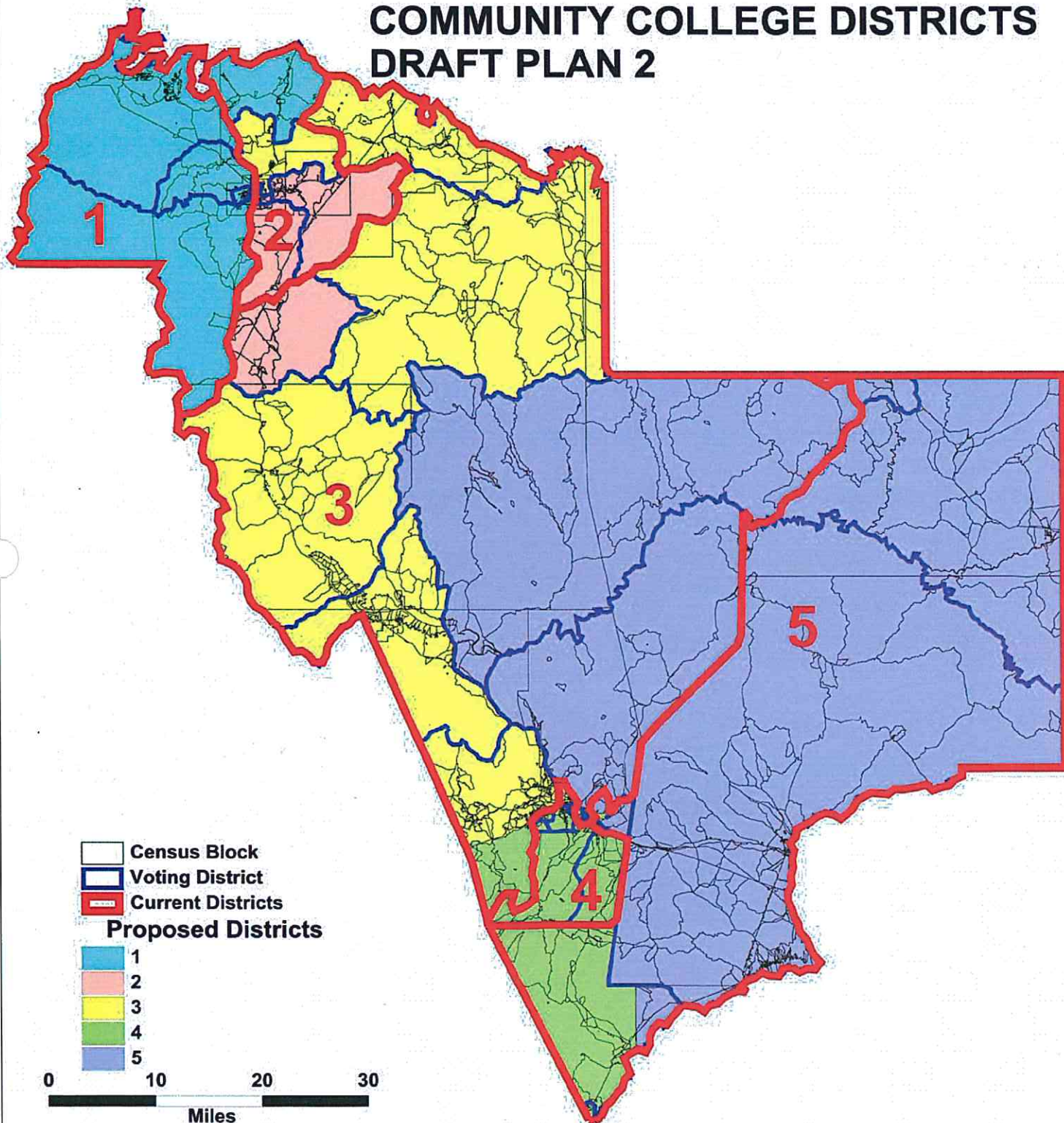
**GILA COUNTY COMMUNITY COLLEGE DISTRICTS
DRAFT PLAN 1**

	Current Districts	Proposed Plan	Change
Population, District 1	11,670	10,930	-740
Population, District 2	11,342	10,767	-575
Population, District 3	10,231	11,102	871
Population, District 4	8,972	10,627	1,655
Population, District 5	11,382	10,171	-1,211
Population deviation, District 1	951	211	
Population deviation, District 2	623	48	
Population deviation, District 3	-488	383	
Population deviation, District 4	-1,747	-92	
Population deviation, District 5	663	-548	
Percent deviation, District 1	8.87%	1.96%	
Percent deviation, District 2	5.81%	0.44%	
Percent deviation, District 3	-4.56%	3.57%	
Percent deviation, District 4	-16.30%	-0.86%	
Percent deviation, District 5	6.18%	-5.12%	
Total plan deviation, number	2,698	931	
Total plan deviation, percent	25.17%	8.69%	
Percent voting-age Hispanic, District 1	5.89%	6.19%	0.30%
Percent voting-age Hispanic, District 2	7.24%	6.10%	-1.14%
Percent voting-age Hispanic, District 3	19.20%	19.71%	0.51%
Percent voting-age Hispanic, District 4	31.10%	36.14%	5.04%
Percent voting-age Hispanic, District 5	19.92%	10.56%	-9.36%
Percent voting-age Non-Hispanic Native American, District 1	1.93%	2.01%	0.08%
Percent voting-age Non-Hispanic Native American, District 2	2.37%	1.52%	-0.85%
Percent voting-age Non-Hispanic Native American, District 3	2.69%	2.94%	0.25%
Percent voting-age Non-Hispanic Native American, District 4	2.40%	3.91%	1.51%
Percent voting-age Non-Hispanic Native American, District 5	55.19%	60.63%	5.44%
Percent voting-age Non-Hispanic Black, District 1	0.35%	0.36%	0.01%
Percent voting-age Non-Hispanic Black, District 2	0.22%	0.23%	0.01%
Percent voting-age Non-Hispanic Black, District 3	0.35%	0.45%	0.10%
Percent voting-age Non-Hispanic Black, District 4	0.73%	0.47%	-0.26%
Percent voting-age Non-Hispanic Black, District 5	0.48%	0.56%	0.08%
Percent voting-age total minority residents, District 1	8.97%	9.36%	0.39%
Percent voting-age total minority residents, District 2	10.91%	8.80%	-2.11%
Percent voting-age total minority residents, District 3	23.12%	24.21%	1.09%
Percent voting-age total minority residents, District 4	35.12%	41.56%	6.44%
Percent voting-age total minority residents, District 5	76.31%	72.16%	-4.15%

Changes to DRAFT PLAN 1

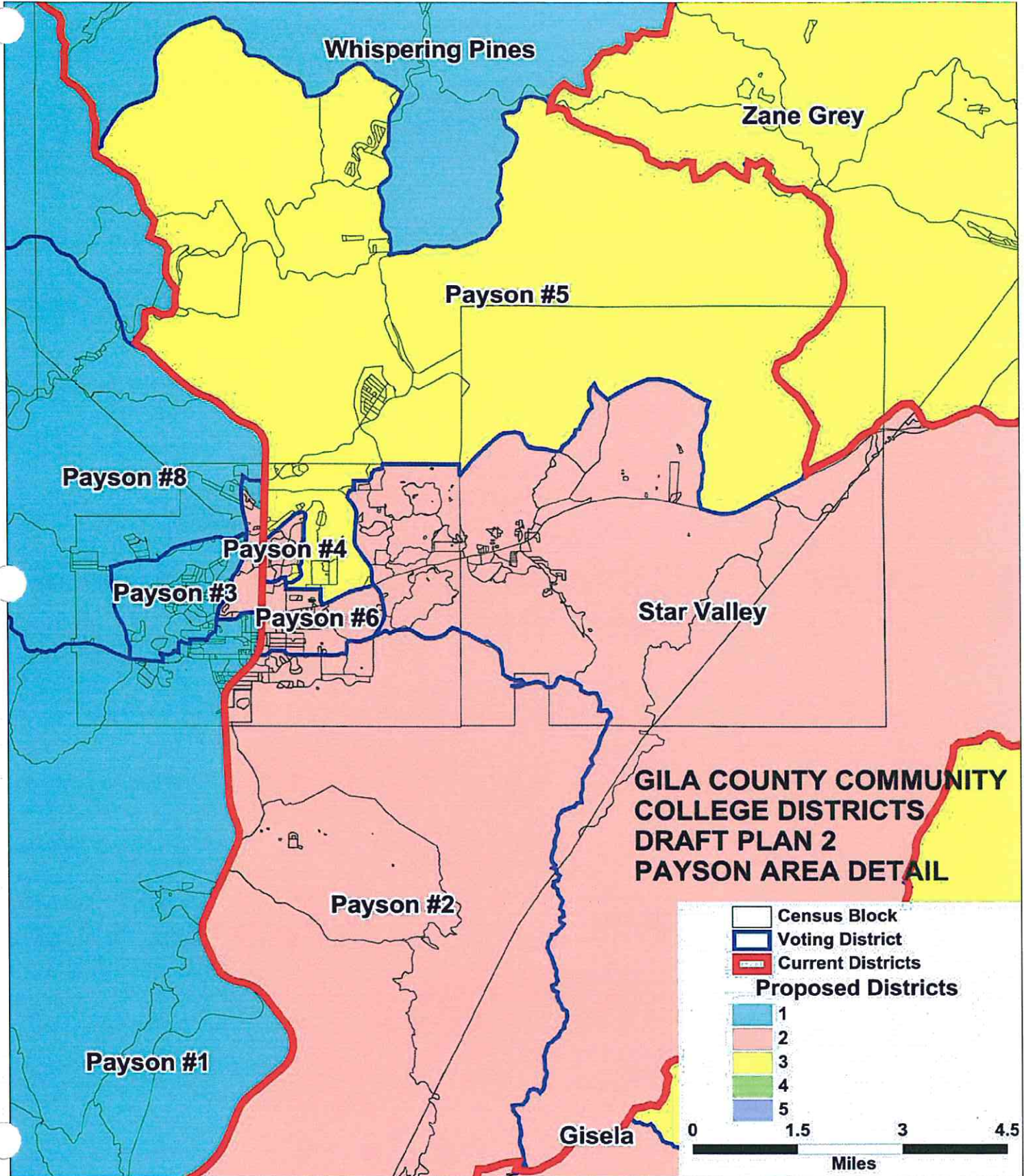
1. Moved non-reservation part of Sierra Ancha precinct from CCD3 to CCD5
2. Moved southwest quadrant to Globe #2 precinct from CCD5 to CCD3.
3. Moved west half of Globe 3 from CCD5 to CCD3
4. Moved five blocks at the north end of Globe #7 from CCD4 to CCD3

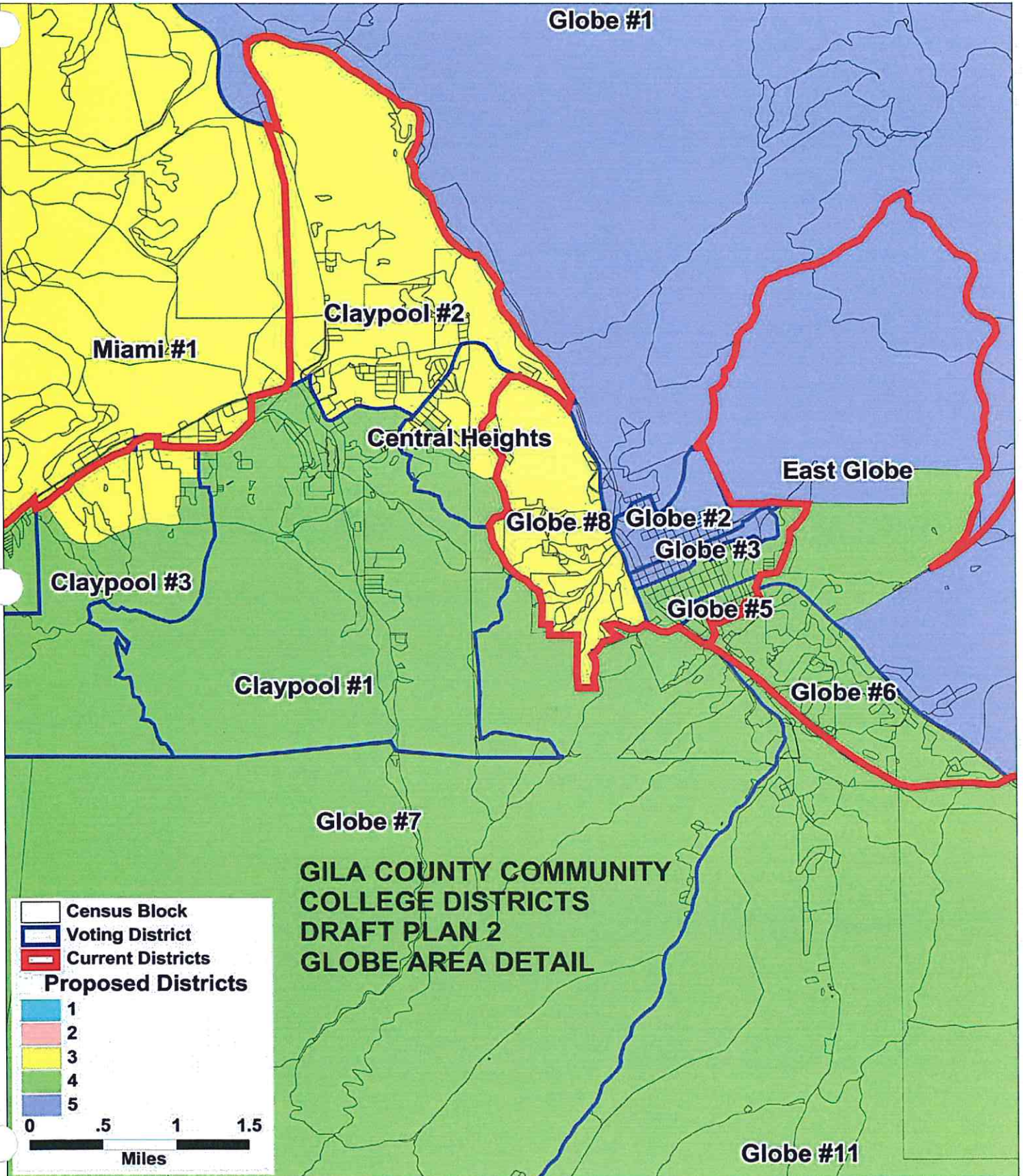
GILA COUNTY COMMUNITY COLLEGE DISTRICTS DRAFT PLAN 2



- Census Block
- Voting District
- Current Districts
- Proposed Districts**
- 1
- 2
- 3
- 4
- 5

0 10 20 30
Miles





**GILA COUNTY COMMUNITY COLLEGE DISTRICTS
TOTAL POPULATION BY RACE AND HISPANIC ORIGIN
DRAFT PLAN 2**

<u>Number:</u>	<u>District 1</u>	<u>District 2</u>	<u>District 3</u>	<u>District 4</u>	<u>District 5</u>	<u>Total, All Districts</u>
Hispanic, of any race	841	979	2,518	3,986	1,264	9,588
Non-Hispanic White	9,446	9,354	8,236	5,765	2,497	35,298
Non-Hispanic Black	47	44	63	51	43	248
Non-Hispanic American Indian	229	317	235	455	6,739	7,975
Non-Hispanic Asian	67	79	68	79	28	321
Non-Hispanic Hawaiian	16	9	11	3	0	39
Non-Hispanic other race	12	18	14	15	7	66
Non-Hispanic two or more races	7	12	13	14	16	62
Total Population	10,665	10,812	11,158	10,368	10,594	53,597
<u>Percent:</u>						
Hispanic, of any race	7.89%	9.05%	22.57%	38.45%	11.93%	17.89%
Non-Hispanic White	88.57%	86.51%	73.81%	55.60%	23.57%	65.86%
Non-Hispanic Black	0.44%	0.41%	0.56%	0.49%	0.41%	0.46%
Non-Hispanic American Indian	2.15%	2.93%	2.11%	4.39%	63.61%	14.88%
Non-Hispanic Asian	0.63%	0.73%	0.61%	0.76%	0.26%	0.60%
Non-Hispanic Hawaiian	0.15%	0.08%	0.10%	0.03%	0.00%	0.07%
Non-Hispanic other race	0.11%	0.17%	0.13%	0.14%	0.07%	0.12%
Non-Hispanic two or more races	0.07%	0.11%	0.12%	0.14%	0.15%	0.12%
Total Percent	100.00%	100.00%	100.00%	100.00%	100.00%	100.00%
Ideal Population	10,719	10,719	10,719	10,719	10,719	Total 10,719
Total Population	10,665	10,812	11,158	10,368	10,594	deviation: -125
Numeric deviation from Ideal Value	-54	93	439	-351	-125	790
Percent deviation from Ideal Value	-0.51%	0.86%	4.09%	-3.28%	-1.17%	7.37%

Source: Census 2010 Redistricting Data (Public Law 94-171) Summary file, Arizona
Tabulation: Research Advisory Services, Inc., Phoenix AZ (602) 230-9580

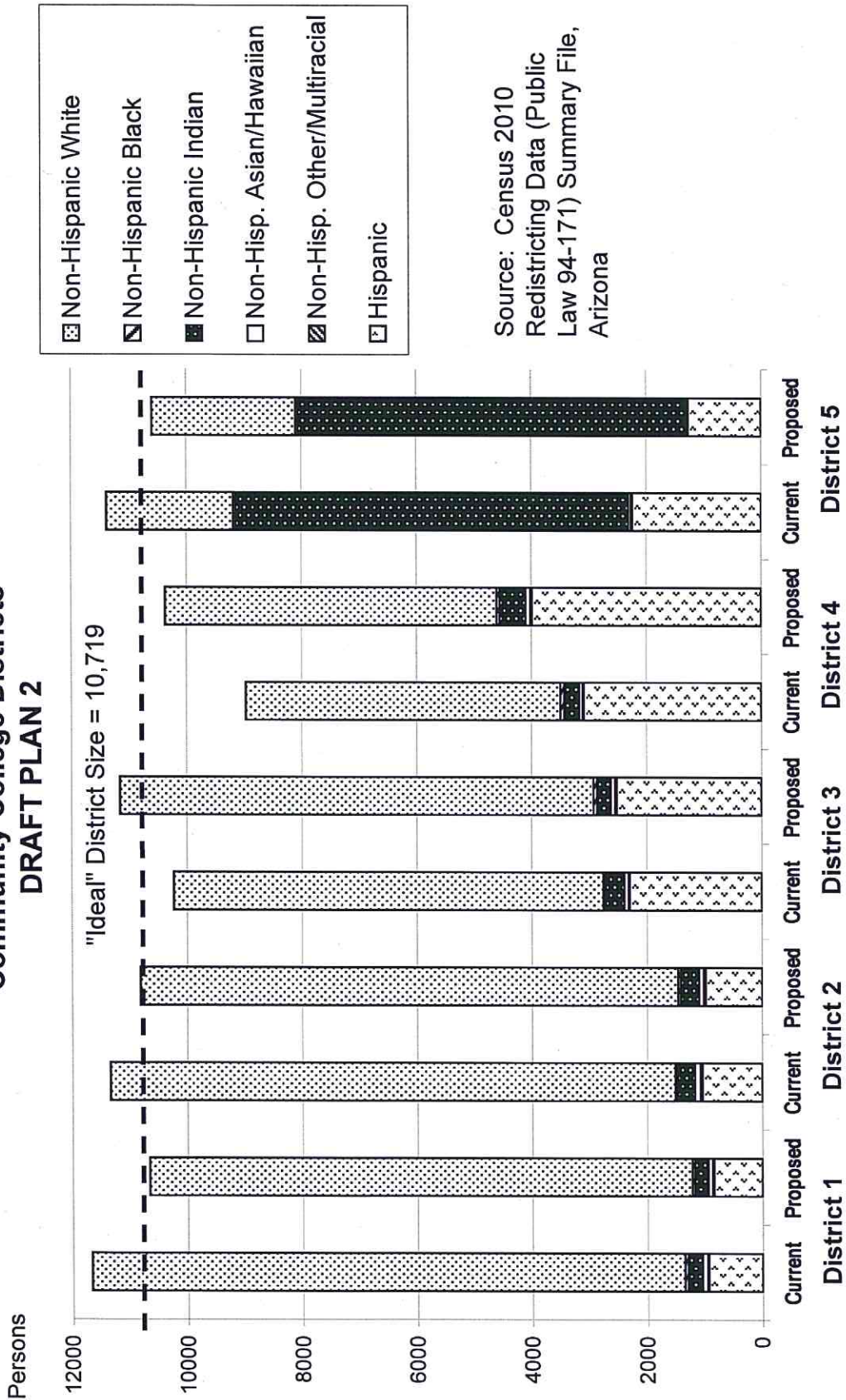
**GILA COUNTY COMMUNITY COLLEGE DISTRICTS
VOTING-AGE POPULATIONS BY RACE AND HISPANIC ORIGIN
DRAFT PLAN 2**

<u>Voting-Age Number:</u>	<u>District 1</u>	<u>District 2</u>	<u>District 3</u>	<u>District 4</u>	<u>District 5</u>	<u>Total, All Districts</u>
Hispanic, of any race	512	632	1,746	2,771	890	6,551
Non-Hispanic White	8,236	7,832	7,058	4,663	2,006	29,795
Non-Hispanic Black	29	24	45	31	42	171
Non-Hispanic American Indian	174	226	154	317	4,268	5,139
Non-Hispanic Asian	54	64	53	63	18	252
Non-Hispanic Hawaiian	11	8	10	1	0	30
Non-Hispanic other race	3	16	12	8	5	44
Non-Hispanic two or more races	5	8	10	9	11	43
Voting-Age Population	9,024	8,810	9,088	7,863	7,240	42,025

<u>Voting-Age Percent:</u>	<u>District 1</u>	<u>District 2</u>	<u>District 3</u>	<u>District 4</u>	<u>District 5</u>	<u>Total, All Districts</u>
Hispanic, of any race	5.67%	7.17%	19.21%	35.24%	12.29%	15.59%
Non-Hispanic White	91.27%	88.90%	77.66%	59.30%	27.71%	70.90%
Non-Hispanic Black	0.32%	0.27%	0.50%	0.39%	0.58%	0.41%
Non-Hispanic American Indian	1.93%	2.57%	1.69%	4.03%	58.95%	12.23%
Non-Hispanic Asian	0.60%	0.73%	0.58%	0.80%	0.25%	0.60%
Non-Hispanic Hawaiian	0.12%	0.09%	0.11%	0.01%	0.00%	0.07%
Non-Hispanic other race	0.03%	0.18%	0.13%	0.10%	0.07%	0.10%
Non-Hispanic two or more races	0.06%	0.09%	0.11%	0.11%	0.15%	0.10%
Voting-Age Percent	100.00%	100.00%	100.00%	100.00%	100.00%	100.00%

Source: Census 2010 Redistricting Data (Public Law 94-171) Summary file, Arizona
 Tabulation: Research Advisory Services, Inc., Phoenix AZ (602) 230-9580

Race and Origin Composition of Current and Proposed Gila County Community College Districts DRAFT PLAN 2



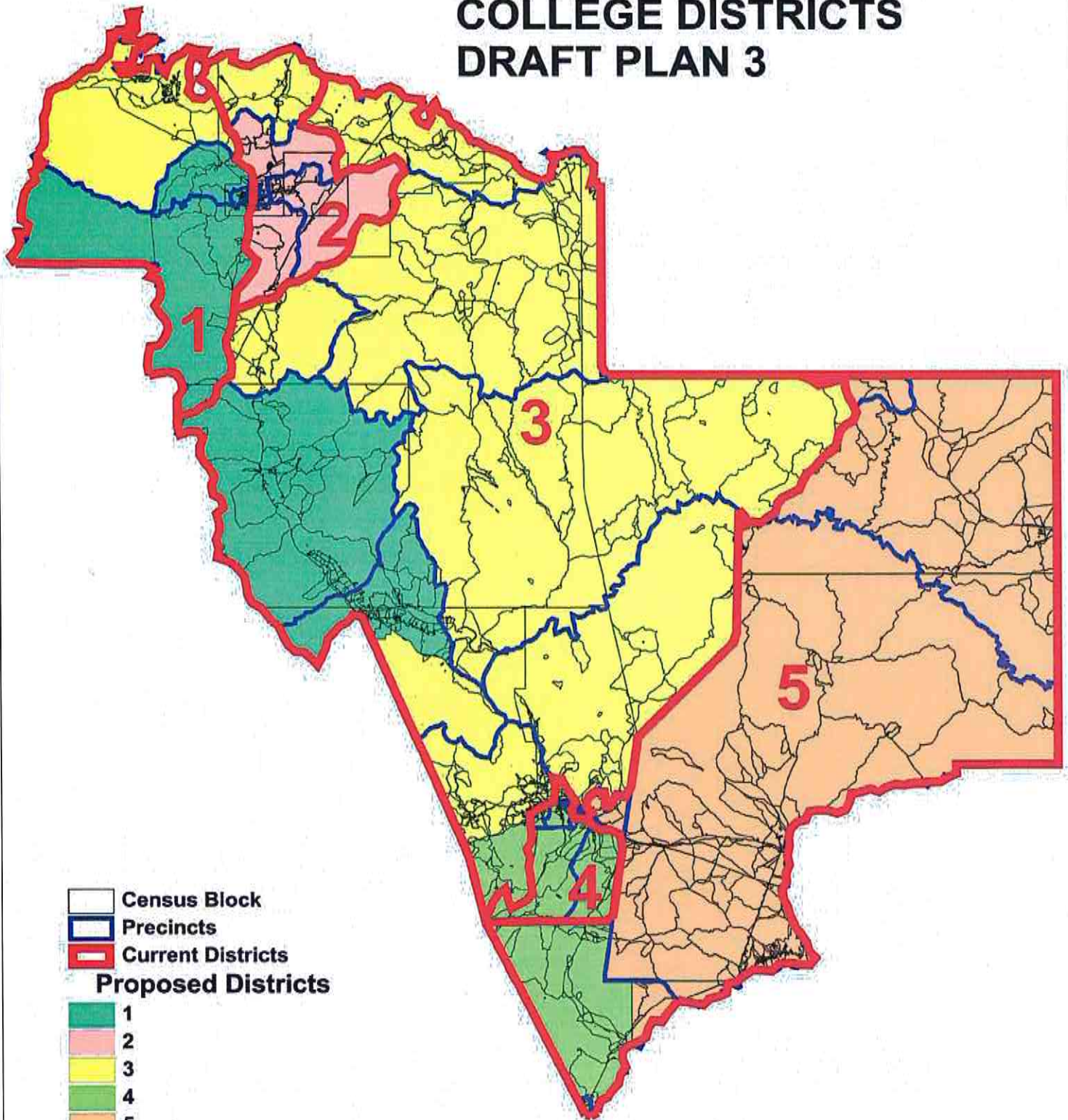
**GILA COUNTY COMMUNITY COLLEGE DISTRICTS
DRAFT PLAN 2**






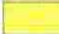

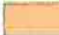
	Current Districts	Proposed Plan	Change
Population, District 1	11,670	10,665	-1,005
Population, District 2	11,342	10,812	-530
Population, District 3	10,231	11,158	927
Population, District 4	8,972	10,368	1,396
Population, District 5	11,382	10,594	-788
Population deviation, District 1	951	-54	
Population deviation, District 2	623	93	
Population deviation, District 3	-488	439	
Population deviation, District 4	-1,747	-351	
Population deviation, District 5	663	-125	
Percent deviation, District 1	8.87%	-0.51%	
Percent deviation, District 2	5.81%	0.86%	
Percent deviation, District 3	-4.56%	4.09%	
Percent deviation, District 4	-16.30%	-3.28%	
Percent deviation, District 5	6.18%	-1.17%	
Total plan deviation, number	2,698	790	
Total plan deviation, percent	25.17%	7.37%	
Percent voting-age Hispanic, District 1	5.89%	5.67%	-0.22%
Percent voting-age Hispanic, District 2	7.24%	7.17%	-0.07%
Percent voting-age Hispanic, District 3	19.20%	19.21%	0.01%
Percent voting-age Hispanic, District 4	31.10%	35.24%	4.14%
Percent voting-age Hispanic, District 5	19.92%	12.29%	-7.63%
Percent voting-age Non-Hispanic Native American, District 1	1.93%	1.93%	0.00%
Percent voting-age Non-Hispanic Native American, District 2	2.37%	2.57%	0.20%
Percent voting-age Non-Hispanic Native American, District 3	2.69%	1.69%	-1.00%
Percent voting-age Non-Hispanic Native American, District 4	2.40%	4.03%	1.63%
Percent voting-age Non-Hispanic Native American, District 5	55.19%	58.95%	3.76%
Percent voting-age Non-Hispanic Black, District 1	0.35%	0.32%	-0.03%
Percent voting-age Non-Hispanic Black, District 2	0.22%	0.27%	0.05%
Percent voting-age Non-Hispanic Black, District 3	0.35%	0.50%	0.15%
Percent voting-age Non-Hispanic Black, District 4	0.73%	0.39%	-0.34%
Percent voting-age Non-Hispanic Black, District 5	0.48%	0.58%	0.10%
Percent voting-age total minority residents, District 1	8.97%	8.73%	-0.24%
Percent voting-age total minority residents, District 2	10.91%	11.10%	0.19%
Percent voting-age total minority residents, District 3	23.12%	22.34%	-0.78%
Percent voting-age total minority residents, District 4	35.12%	40.70%	5.58%
Percent voting-age total minority residents, District 5	76.31%	72.29%	-4.02%

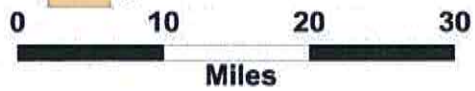
Changes to DRAFT PLAN 2:

1. Moved Sierra Ancha precinct from CCD3 to CCD5
2. Moved blocks at north end of Claypool 3 precinct from CCD4 to CCD3
3. Moved blocks at south end of Central Heights precinct from CCD3 to CCD4
4. Moved blocks in East Globe precincts, north of Highway 60, from CCD5 to CCD4

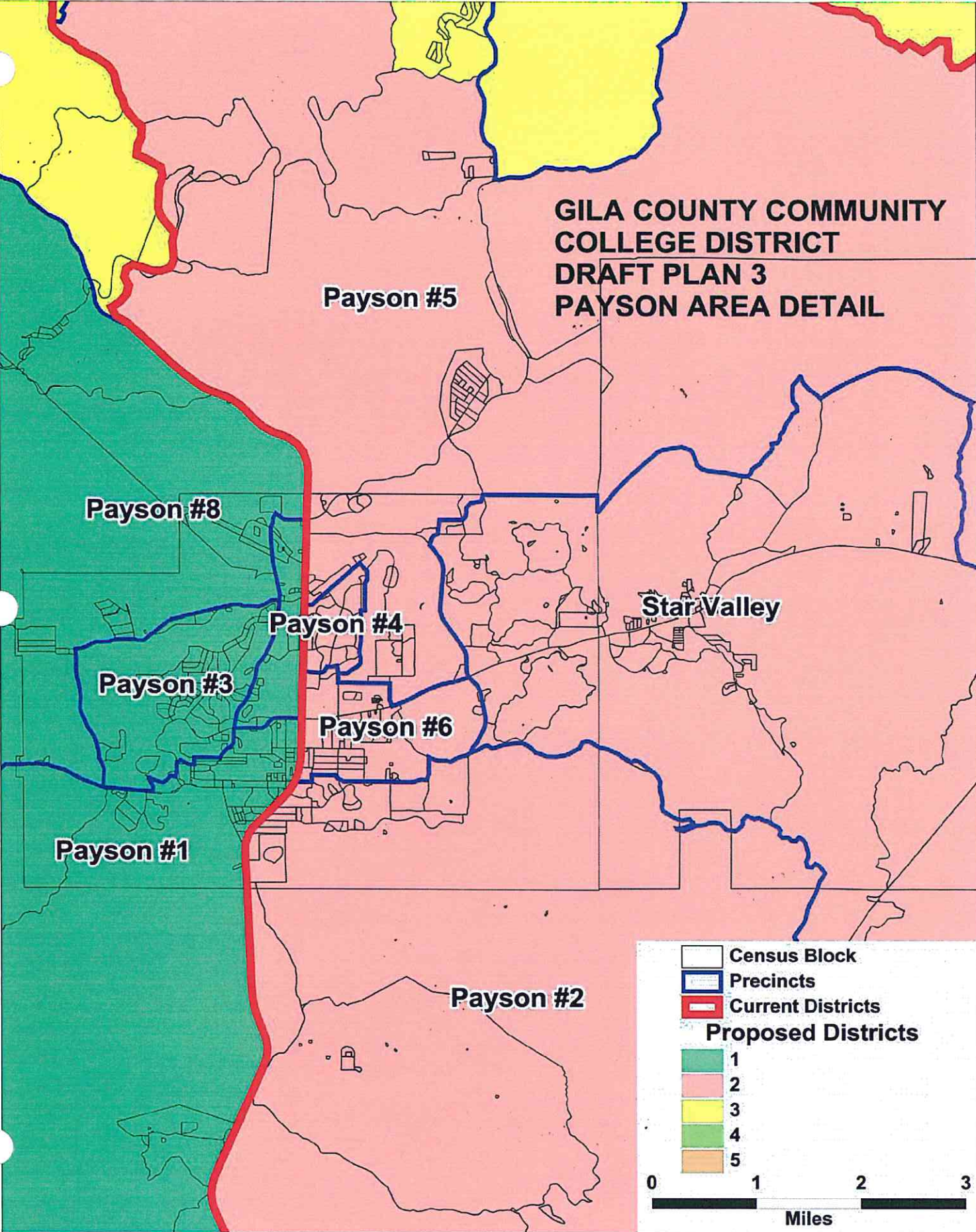
GILA COUNTY COMMUNITY COLLEGE DISTRICTS DRAFT PLAN 3



-  Census Block
-  Precincts
-  Current Districts
- Proposed Districts**
-  1
-  2
-  3
-  4
-  5



**GILA COUNTY COMMUNITY COLLEGE DISTRICT
DRAFT PLAN 3
PAYSON AREA DETAIL**



Payson #5

Payson #8

Payson #4









Star Valley

Payson #3

Payson #6

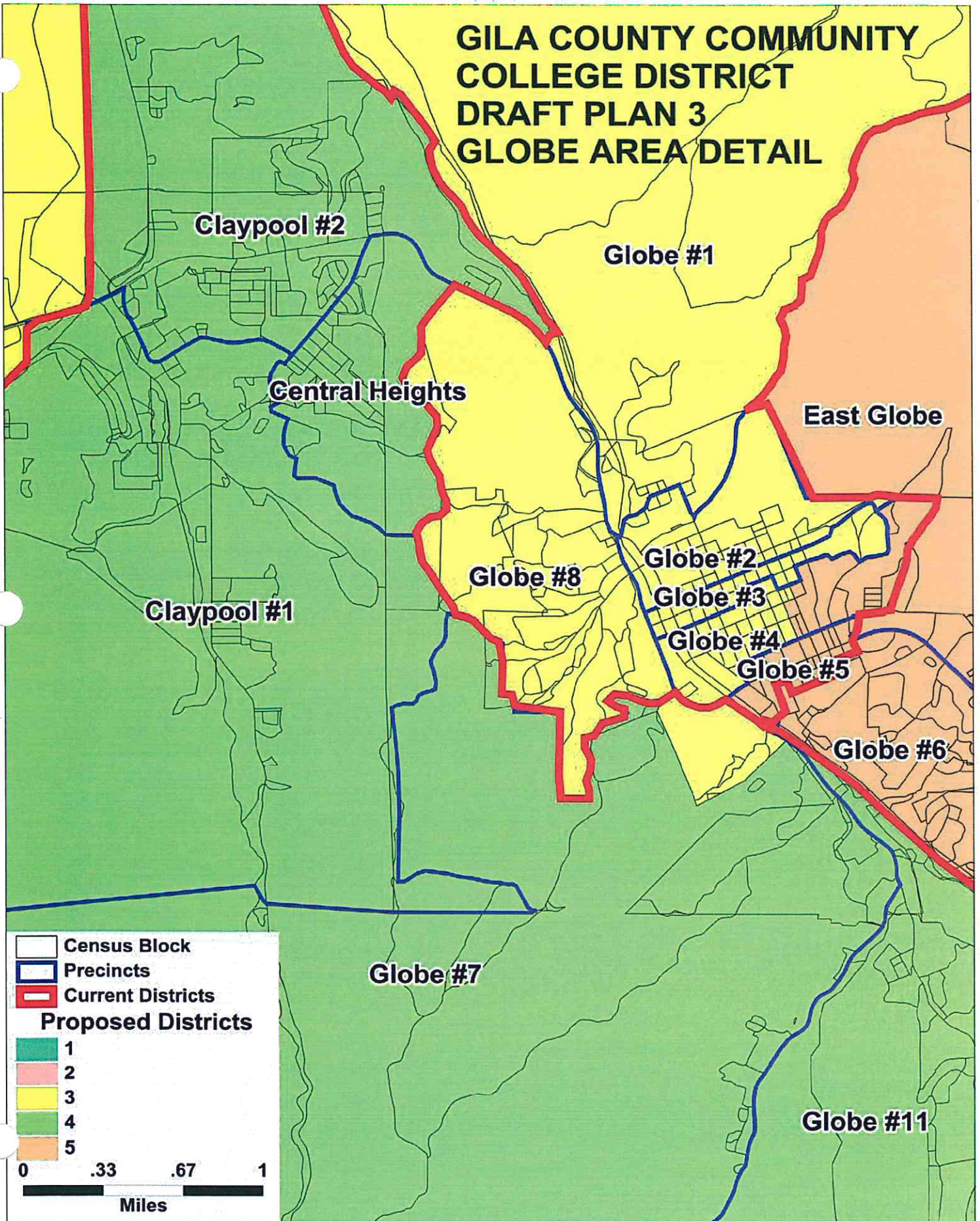
Payson #1

Payson #2

-  Census Block
-  Precincts
-  Current Districts
- Proposed Districts**
-  1
-  2
-  3
-  4
-  5



GILA COUNTY COMMUNITY COLLEGE DISTRICT DRAFT PLAN 3 GLOBE AREA DETAIL



**GILA COUNTY COMMUNITY COLLEGE DISTRICTS
TOTAL POPULATION BY RACE AND HISPANIC ORIGIN
DRAFT PLAN 3**

<u>Number:</u>	<u>District 1</u>	<u>District 2</u>	<u>District 3</u>	<u>District 4</u>	<u>District 5</u>	<u>Total, All Districts</u>
Hispanic, of any race	936	1,019	2,060	4,115	1,458	9,588
Non-Hispanic White	9,313	9,328	8,479	5,867	2,311	35,298
Non-Hispanic Black	61	39	33	74	41	248
Non-Hispanic American Indian	238	301	306	287	6,843	7,975
Non-Hispanic Asian	57	80	74	51	59	321
Non-Hispanic Hawaiian	9	8	13	8	1	39
Non-Hispanic other race	16	17	11	16	6	66
Non-Hispanic two or more races	7	14	13	7	21	62
Total Population	10,637	10,806	10,989	10,425	10,740	53,597
<u>Percent:</u>						
Hispanic, of any race	8.80%	9.43%	18.75%	39.47%	13.58%	17.89%
Non-Hispanic White	87.55%	86.32%	77.16%	56.28%	21.52%	65.86%
Non-Hispanic Black	0.57%	0.36%	0.30%	0.71%	0.38%	0.46%
Non-Hispanic American Indian	2.24%	2.79%	2.78%	2.75%	63.72%	14.88%
Non-Hispanic Asian	0.54%	0.74%	0.67%	0.49%	0.55%	0.60%
Non-Hispanic Hawaiian	0.08%	0.07%	0.12%	0.08%	0.01%	0.07%
Non-Hispanic other race	0.15%	0.16%	0.10%	0.15%	0.06%	0.12%
Non-Hispanic two or more races	0.07%	0.13%	0.12%	0.07%	0.20%	0.12%
Total Percent	100.00%	100.00%	100.00%	100.00%	100.00%	100.00%
Ideal Population	10,719	10,719	10,719	10,719	10,719	Total 10,719
Total Population	10,637	10,806	10,989	10,425	10,740	deviation: -82
Numeric deviation from Ideal Value	-82	87	270	-294	21	564
Percent deviation from Ideal Value	-0.77%	0.81%	2.52%	-2.75%	0.19%	5.26%

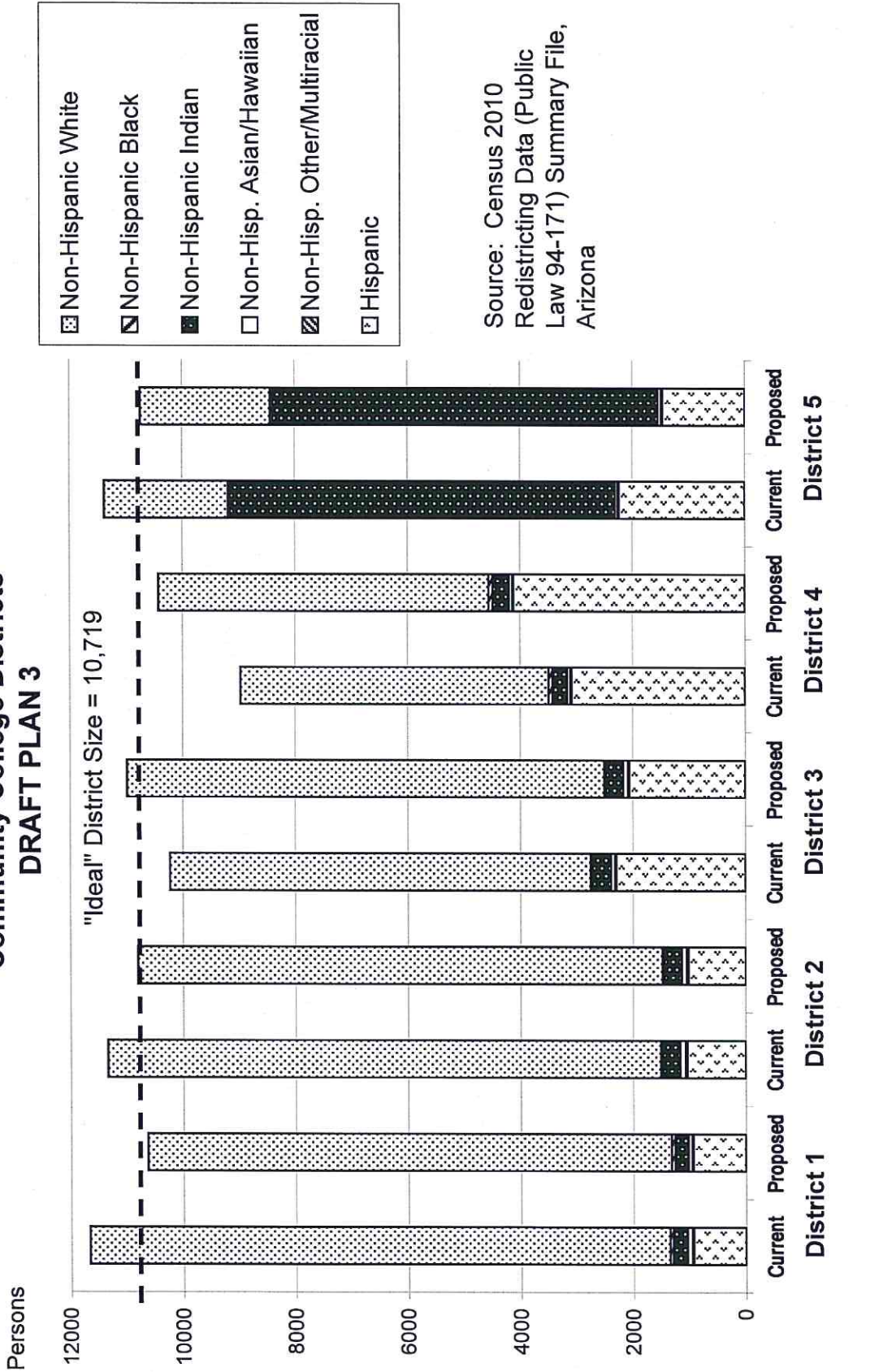
Source: Census 2010 Redistricting Data (Public Law 94-171) Summary file, Arizona
Tabulation: Research Advisory Services, Inc., Phoenix AZ (602) 230-9580

**GILA COUNTY COMMUNITY COLLEGE DISTRICTS
VOTING-AGE POPULATIONS BY RACE AND HISPANIC ORIGIN
DRAFT PLAN 3**

<u>Voting-Age Number:</u>	<u>District 1</u>	<u>District 2</u>	<u>District 3</u>	<u>District 4</u>	<u>District 5</u>	<u>Total, All Districts</u>
Hispanic, of any race	581	662	1,458	2,859	959	6,519
Non-Hispanic White	8,012	7,920	7,367	4,673	1,950	29,922
Non-Hispanic Black	40	21	20	50	40	171
Non-Hispanic American Indian	178	218	219	184	4,346	5,145
Non-Hispanic Asian	46	65	56	40	45	252
Non-Hispanic Hawaiian	8	7	9	5	1	30
Non-Hispanic other race	7	13	9	10	5	44
Non-Hispanic two or more races	6	10	9	6	12	43
<i>Voting-Age Population</i>	8,878	8,916	9,147	7,827	7,358	42,126
<u>Voting-Age Percent:</u>						
Hispanic, of any race	6.54%	7.42%	15.94%	36.53%	13.03%	15.48%
Non-Hispanic White	90.25%	88.83%	80.54%	59.70%	26.50%	71.03%
Non-Hispanic Black	0.45%	0.24%	0.22%	0.64%	0.54%	0.41%
Non-Hispanic American Indian	2.00%	2.45%	2.39%	2.35%	59.06%	12.21%
Non-Hispanic Asian	0.52%	0.73%	0.61%	0.51%	0.61%	0.60%
Non-Hispanic Hawaiian	0.09%	0.08%	0.10%	0.06%	0.01%	0.07%
Non-Hispanic other race	0.08%	0.15%	0.10%	0.13%	0.07%	0.10%
Non-Hispanic two or more races	0.07%	0.11%	0.10%	0.08%	0.16%	0.10%
<i>Voting-Age Percent</i>	100.00%	100.00%	100.00%	100.00%	100.00%	100.00%

Source: Census 2010 Redistricting Data (Public Law 94-171) Summary file, Arizona
 Tabulation: Research Advisory Services, Inc., Phoenix AZ (602) 230-9580

Race and Origin Composition of Current and Proposed Gila County Community College Districts DRAFT PLAN 3



**GILA COUNTY COMMUNITY COLLEGE DISTRICTS
DRAFT PLAN 3**

	Current Districts	Proposed Plan	Change
Population, District 1	11,670	10,637	-1,033
Population, District 2	11,342	10,806	-536
Population, District 3	10,231	10,989	758
Population, District 4	8,972	10,425	1,453
Population, District 5	11,382	10,740	-642
Population deviation, District 1	951	-82	
Population deviation, District 2	623	87	
Population deviation, District 3	-488	270	
Population deviation, District 4	-1,747	-294	
Population deviation, District 5	663	21	
Percent deviation, District 1	8.87%	-0.77%	
Percent deviation, District 2	5.81%	0.81%	
Percent deviation, District 3	-4.56%	2.52%	
Percent deviation, District 4	-16.30%	-2.75%	
Percent deviation, District 5	6.18%	0.19%	
Total plan deviation, number	2,698	564	
Total plan deviation, percent	25.17%	5.26%	
Percent voting-age Hispanic, District 1	5.89%	6.54%	0.65%
Percent voting-age Hispanic, District 2	7.24%	7.42%	0.18%
Percent voting-age Hispanic, District 3	19.20%	15.94%	-3.26%
Percent voting-age Hispanic, District 4	31.10%	36.53%	5.43%
Percent voting-age Hispanic, District 5	19.92%	13.03%	-6.89%
Percent voting-age Non-Hispanic Native American, District 1	1.93%	2.00%	0.07%
Percent voting-age Non-Hispanic Native American, District 2	2.37%	2.45%	0.08%
Percent voting-age Non-Hispanic Native American, District 3	2.69%	2.39%	-0.30%
Percent voting-age Non-Hispanic Native American, District 4	2.40%	2.35%	-0.05%
Percent voting-age Non-Hispanic Native American, District 5	55.19%	59.06%	3.87%
Percent voting-age Non-Hispanic Black, District 1	0.35%	0.45%	0.10%
Percent voting-age Non-Hispanic Black, District 2	0.22%	0.24%	0.02%
Percent voting-age Non-Hispanic Black, District 3	0.35%	0.22%	-0.13%
Percent voting-age Non-Hispanic Black, District 4	0.73%	0.64%	-0.09%
Percent voting-age Non-Hispanic Black, District 5	0.48%	0.54%	0.06%
Percent voting-age total minority residents, District 1	8.97%	9.75%	0.78%
Percent voting-age total minority residents, District 2	10.91%	11.17%	0.26%
Percent voting-age total minority residents, District 3	23.12%	19.46%	-3.66%
Percent voting-age total minority residents, District 4	35.12%	40.30%	5.18%
Percent voting-age total minority residents, District 5	76.31%	73.50%	-2.81%

Changes to DRAFT PLAN 3:

1. Moved Carrizo precinct from CCD3 to CCD5
2. Moved Hayden, Winkelman and the non-reserv. part of Christmas precinct from CCD5 to CCD3
3. Moved Miami #1 precinct south of Hwy 60 from CCD3 to CCD4
4. Moved six blocks at the north end of Globe #7 from CCD4 to CCD3

GILA COUNTY BOARD OF SUPERVISORS



Public Participation Form

TO ADDRESS A SPECIFIC ITEM LISTED ON THE AGENDA
EXCEPT A CALL TO THE PUBLIC

Notice: The Board is required to call for public comment on any agenda item that is listed as a hearing. Hearings typically include those items such as planning and zoning items on the regular agenda; hearings on establishments, exchanges or abandonments; hearings related to new ordinances or changes to existing ordinances; hearings on fee schedules; and hearings related to the establishment of special or improvement districts.

The Board is not required by law to call for public comment on every agenda item but may choose to do so, particularly if an item is of great interest or concern to local citizens and if time permits. Completing this form for items other than those listed as hearings does not guarantee you the opportunity to speak at the meeting.

Speakers will be limited to 3 minutes. Please give your completed form to the Chief Deputy Clerk of the Board.

Meeting Date 8/6

Number of Agenda Item 42

In favor of the issue Opposed to issue I wish to speak

Your name Linda Pearce

Your address P.O. Box 52

You may wish to submit written comments in the event you do not have the opportunity to speak at the meeting. Written comments will be circulated to the members of the Board for their review.
