

1516  
1998 2957

NW 1/16 Corner  
Section 26. Found 4' capped pipe.

**CERTIFICATION**

I hereby certify that the information shown hereon is correct to the best of my knowledge and belief.



Carlos N. Ozuna 1-9-98  
Carlos N. Ozuna RLS 31602 Date

**RECORD OF SURVEY**

showing  
**EXISTING ROADWAY EASEMENTS**

being a portion of  
**PIMA ROAD**  
situate in  
**TOWNSITE OF ARLINGTON HEIGHTS**  
**OFFICIAL MAP NO. 31**  
**GILA COUNTY RECORDS**

situate in  
**SECTION 26**  
**TOWNSHIP 1 NORTH, RANGE 15 EAST**  
**GILA AND SALT RIVER MERIDIAN**

Gila County, Arizona

STATE OF ARIZONA  
County of Arizona  
I hereby certify that the within instrument was filed and recorded at the request of Gila County Engineering Services.

Date: MARCH 3, 1998

Time: 9:18 A.M.

Record of Survey Map No. 1516  
Official Records of Gila County, Arizona.  
Witness my hand and Official Seal the day and year first above written.

LINDA HAUGHT ORTEGA, Gila County Recorder  
By: Liane Sickey, Deputy



SCALE: 1" = 30'

LINE	BEARING	DISTANCE
L1	S 00° 30' 45" W	20.26
L2	N 80° 19' 04" W	40.49
L3	N 00° 30' 45" E	20.26
L4	S 80° 19' 04" E	40.49
L5	N 80° 19' 04" W	79.52
L6	N 00° 27' 45" E	46.17
L7	N 84° 42' 30" E	23.25
L8	S 31° 23' 47" W	3.80
L9	S 80° 19' 04" E	76.04
L10	N 84° 43' 30" E	26.51
L11	S 00° 27' 45" W	1.38
L12	S 84° 42' 30" W	.58
L13	N 31° 23' 47" E	31.72
L14	N 50° 35' 38" E	29.77
L15	N 00° 30' 45" E	5.49
L16	S 50° 35' 38" W	26.39
L17	S 31° 23' 47" W	24.54
L18	N 00° 30' 45" E	15.99
L19	N 00° 27' 45" E	78.17
L20	S 62° 09' 32" W	13.58
L21	N 00° 27' 45" E	22.72
L22	N 84° 43' 30" E	21.00
L23	N 62° 09' 32" E	2.81
L24	S 80° 19' 04" E	99.26
L25	S 84° 43' 30" W	77.49
L26	N 80° 19' 04" W	21.16

CURVE	ARC	DELTA	RADIUS
C1	61.26	56° 49' 28"	61.77
C2	80.27	110° 06' 44"	41.77
C3	8.94	08° 17' 43"	61.77
C4	82.32	168° 26' 30"	28.00
C5	141.11	168° 26' 20"	48.00
C6	47.27	43° 50' 30"	61.77
C7	1.55	01° 26' 07"	61.77

CURVE	CHORD BEARING	CHORD LENGTH
C1	N 50° 35' 18" W	58.78
C2	S 23° 39' 35" E	68.48
C3	N 27° 14' 55" E	8.94
C4	N 33° 37' 14" W	55.72
C5	S 33° 37' 19" E	95.51
C6	N 00° 15' 19" W	46.12
C7	N 22° 23' 00" E	1.55

**LEGEND**

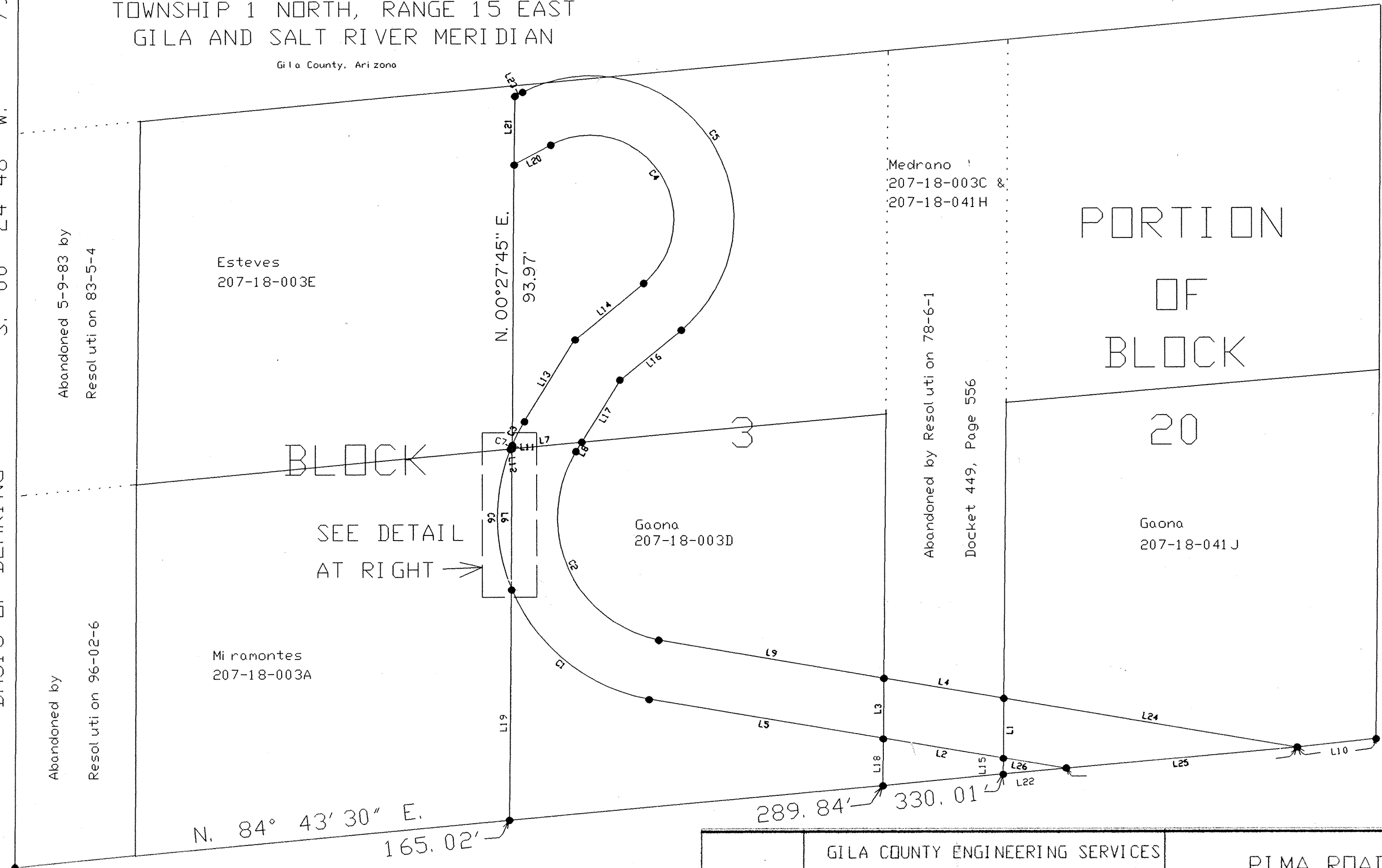
- ◊ = Fractional Section corner found and tied.
- = Set 5/8" rebar with cap
- (M) = Measured Courses
- (R) = Record Courses
- (C) = Calculated Courses.

Note: All courses shown hereon are calculated unless otherwise noted.

BASIS OF BEARING S. 00° 24' 48" W. 799.94'

Abandoned by Resolution 5-9-83 by Resolution 83-5-4

Abandoned by Resolution 96-02-6

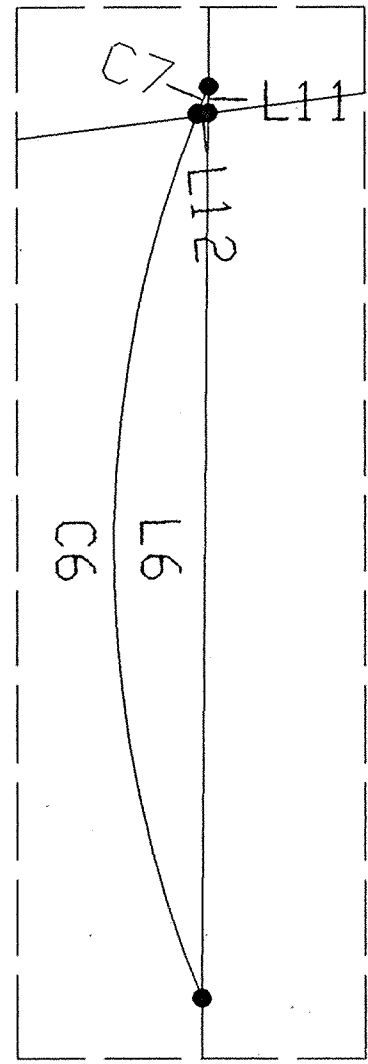


Medrano  
207-18-003C &  
207-18-041H

Abandoned by Resolution 78-6-1  
Docket 449, Page 556

PORTION  
OF  
BLOCK  
20

Gaona  
207-18-041J



DETAIL

GILA COUNTY ENGINEERING SERVICES		PIMA ROAD EASEMENTS	
E. D. "RICK" BUNGER AZ RLS 14169 GILA COUNTY SURVEYOR		1400 East Ash Street Globe, Arizona 85501 (520) 425-3231 Ext. 312 FAX (520) 425-9104	
DATE: 1-8-98	DRAWN BY: CND	SURVEY: CND	SCALE: 30
CO. ACQUIRED EXISTING ROAD			JOB NO. 97G028 SHEET 1 OF 1

1516